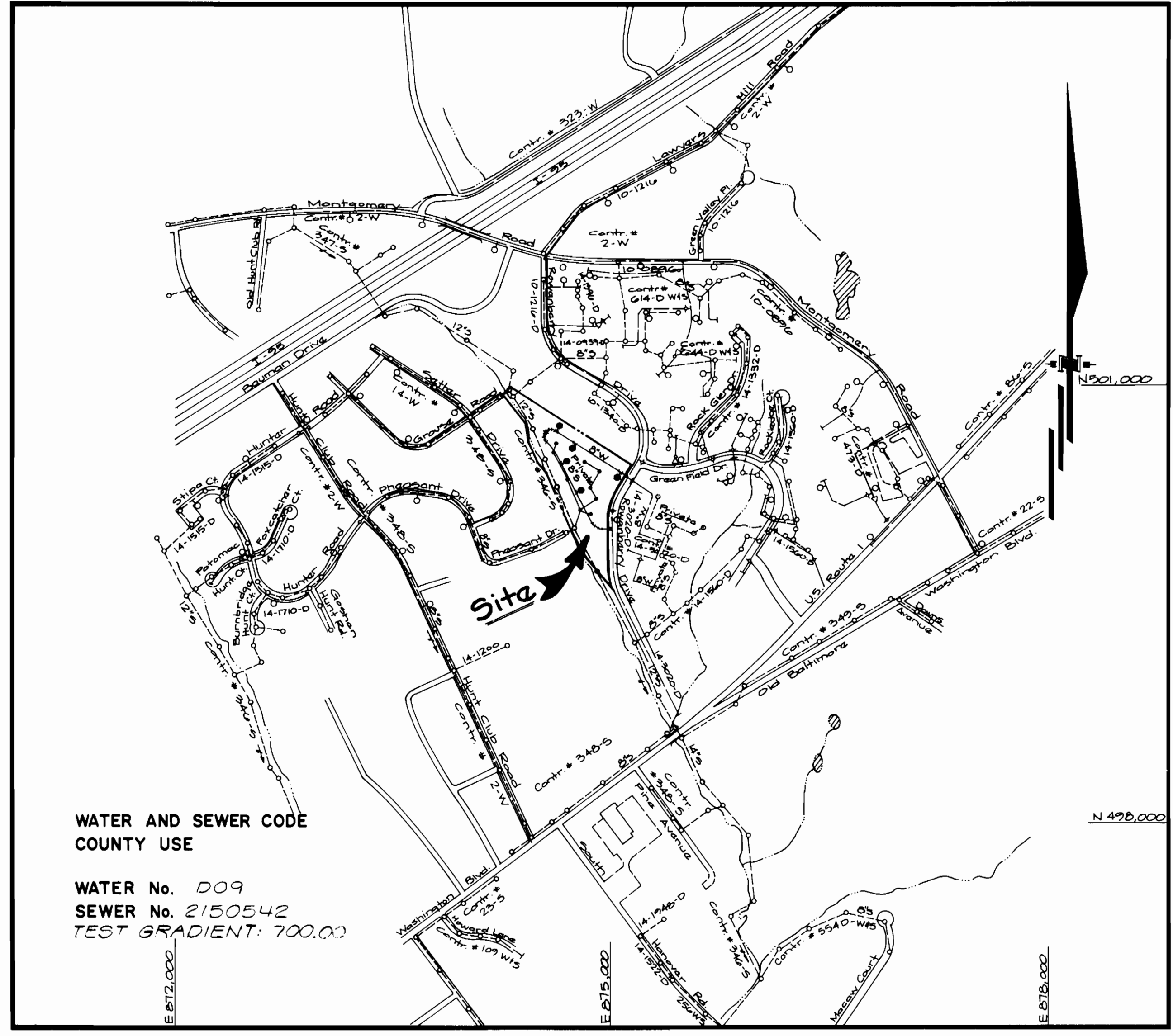


AS-BUILT 11-14-95

TYPE OF BUILDING	Apartments
NUMBER OF UNITS	84
NUMBER OF SHC's	1
NUMBER OF WHC's	10
DRAINAGE AREA	Potomac



WATER AND SEWER CODE
COUNTY USE

WATER No. 009
SEWER No. 2150542
TEST GRADIENT: 700.0'

VICINITY MAP
SCALE: 1" = 600'

GENERAL NOTES

- Approximate locations of existing mains are shown. The contractor shall take all necessary precautions to protect existing mains and services and maintain uninterrupted supply. Any damage incurred shall be repaired immediately to the satisfaction of the Engineer, at the contractor's expense.
- All horizontal controls are based on Maryland State Coordinates.
- All vertical controls are based on U.S.G.S. Datum.
- All pipe elevations shown are invert elevations.
- Clear all utilities by a minimum of 6". Clear all poles by 2'-0" minimum or tunnel as required. Any cost incurred by the contractor for tunnelling or bracing at poles shall be included in unit prices bid for construction of the main.
- For details not shown on the drawings, use Howard County Standard Details.
- For materials and construction methods, use Howard County Standard Specifications & Howard County Design Manual, Volume IX. The Contractor shall have a copy of Volume IX on the job.
- Contractor shall locate existing utilities a minimum of two (2) weeks in advance of construction operations in the vicinity of proposed utilities, at his own expense.
- Contractor shall notify the following utilities or agencies at least five (5) working days before starting work shown on these plans.

State Highway Administration	531-5533	Baltimore Gas & Electric Company	
"Miss Utility"	1-559-0100	Contractor Services	561-2585
Chesapeake & Potomac (CBP)		Underground Damage Control	234-5621
Telephone Company	725-9976	Trouble-shooting	298-9013
Colonial Pipeline Company	795-1390	Bureau of Utilities, Howard County	313-4900
- Trees are to be protected from damage to maximum extent. Trees located within the construction strip are not to be removed or damaged by the contractor.
- Contractor shall remove trees, stumps and roots along line of excavation as directed by the Engineer. Payment for such removal shall be included in the unit price bid for construction of the main.
- Place regulation "Men Working" and warning signs as required to comply with Maryland State Highway Administration Manual of Traffic Control for Highway Construction and Maintenance Operations.
- All water mains to be D.I.P. Class 52.
- Top of all water mains to have a minimum of 3'-1/2' cover unless otherwise noted.
- Valves adjacent to tees shall be strapped to tees.
- Block all fittings with concrete.
- Bury line elevations on fire hydrants shall be set to the elevations shown on the drawings. All fire hydrants shall be restrained and buttressed with concrete in accordance with std. det. W.1.1. Soil around the fire hydrant to be compacted in accordance with Sections 1000 and 1005 of the Standard Specifications.
- All water house connections shall be for an inside meter setting as per standard detail W 3.21, except where noted.
- For all Copper Water House Connections, utilize flared type fittings only.
- All sewer mains shall be CSPX, VCPX, R.C.S.P., PVC or ACP - Class 2400 unless otherwise noted.
- The contractor shall provide a joint in all sewer mains within 2'-0" of exterior manhole wall.
- All manholes shall be 4'-0" inside diameter, unless otherwise noted.
- 12" and 16" manhole wall thicknesses shown on profiles pertain to brick manholes only.
- Manholes designated W.T. in plan and profile shall have watertight frames and covers. (See Standard Detail G 5.52) Where watertight manhole frame and cover is used, set top of frame 1'-6" above finished grade. (See Standard Detail G 5.41)
- House(s) with the symbol "CNS" indicates that cellar cannot be served.
- Water main and water house connection lines must have a minimum of one foot separation from either sanitary sewer or sewer house connections as they cross. Except at crossings, water and sewer lines shall have a minimum horizontal separation of 10'.
- All D.I.P. fittings shall be in accordance with AWWA Specification C-153 ductile iron compact fittings, 3-inch through 12-inch for water and other liquids.
- The contractor shall notify the Bureau of Highways, Howard County, at (410) 313-2450 at least five working days before any work is done out of any County road or boring/jacking operation in County roads for laying water/sewer mains or house connections. The approval of these drawings will constitute concurrence with DPW requirements under section 18.114(a) of the Howard County Code.
- See chart on this sheet for type of meter setting at each unit. Meter settings will be installed according to std. det. W 3.24 W 3.24, except where noted.

CONTRACT NO. 14-3198-D

ELKRIDGE TOWN CENTER

SECTION 2 - PARCELS 'C-1' & 'C-2'

PHASE - I

HOWARD COUNTY, MARYLAND

DEPARTMENT OF PUBLIC WORKS

Sediment Control Measures will be implemented in accordance with Section 2B of the Specifications & with Road Construction Plan SDP-22-22; Drawings 3, 4 + 11 Sediment & Erosion Control.

REVIEWED FOR HOWARD SOIL CONSERVATION DISTRICT AND MEETS TECHNICAL REQUIREMENT.

[Signature] 5/20/92
SIGNATURE DATE

U.S. SOIL CONSERVATION SERVICE

THIS DEVELOPMENT PLAN IS APPROVED FOR SOIL EROSION AND SEDIMENT CONTROL BY THE HOWARD SOIL CONSERVATION DISTRICT.

APPROVED:

[Signature] 5/20/92
HOWARD S.C.D. DATE

ITEMS	QUANTITIES ESTIMATED	QUANTITIES AS-BUILT		
		QUANTITIES	TYPE	MANUFACTURER/SUPPLIER
8" Water	1022 LF	1020 LF	CL 52	GRIFFIN PIPE
6" Water	32 LF	22.5 LF	CL 52	GRIFFIN PIPE
Fire Hydrant	2 ea.	2 EA	—	U.S. PIPE FOUNDRY
6"x8" T.S.F.V.	2 ea.	2 EA	—	U.S. PIPE FOUNDRY
1/8" H.B.	1 ea.	1 EA	—	GRIFFIN PIPE
1/16" H.B.	1 ea.	1 EA	—	GRIFFIN PIPE
8" Sewer	10 LF	446 LF	PVC	J-M HFG.
2" W/C	328 LF	324.5 LF	TYPE "K"	HOWELL METALS
METER VAULTS	2 EA			

NAME OF UTILITY CONTRACTOR:
SURVEY AND DRAFTING AS-BUILT DATE:
6" SEWER 219 LF 219 LF PVC J-M HFG.

Meter Setting Chart

type of meter	units where meter type is used
inside	2, 8, 9, 10, 11, A, B, F
outside	pool house #1

DEPARTMENT OF PUBLIC WORKS
HOWARD COUNTY, MARYLAND

[Signature] 5/21/92
DIRECTOR OF PUBLIC WORKS DATE

[Signature] 5-15-92
CHIEF, BUREAU OF UTILITIES DATE

[Signature]
CHIEF, LAND DEVELOPMENT DIV DATE

GIW GUTSCHICK LITTLE & WEBER, P.A.
ENGINEERS, PLANNERS, SURVEYORS

3909 NATIONAL DRIVE SUITE 230 BURTONTOWNE OFFICE PARK
BURTONTOWNE, MD 20886
(301) 421-4024

DES: G.A.H.			
DRN: G.A.H.			
CHK: C.K.G.	2	rev quantities & meter setting chart	11/95
M.J.V.	1	rev general notes & add meter setting chart	6/19/94
DATE: 1992	BY NO.	REVISION	DATE

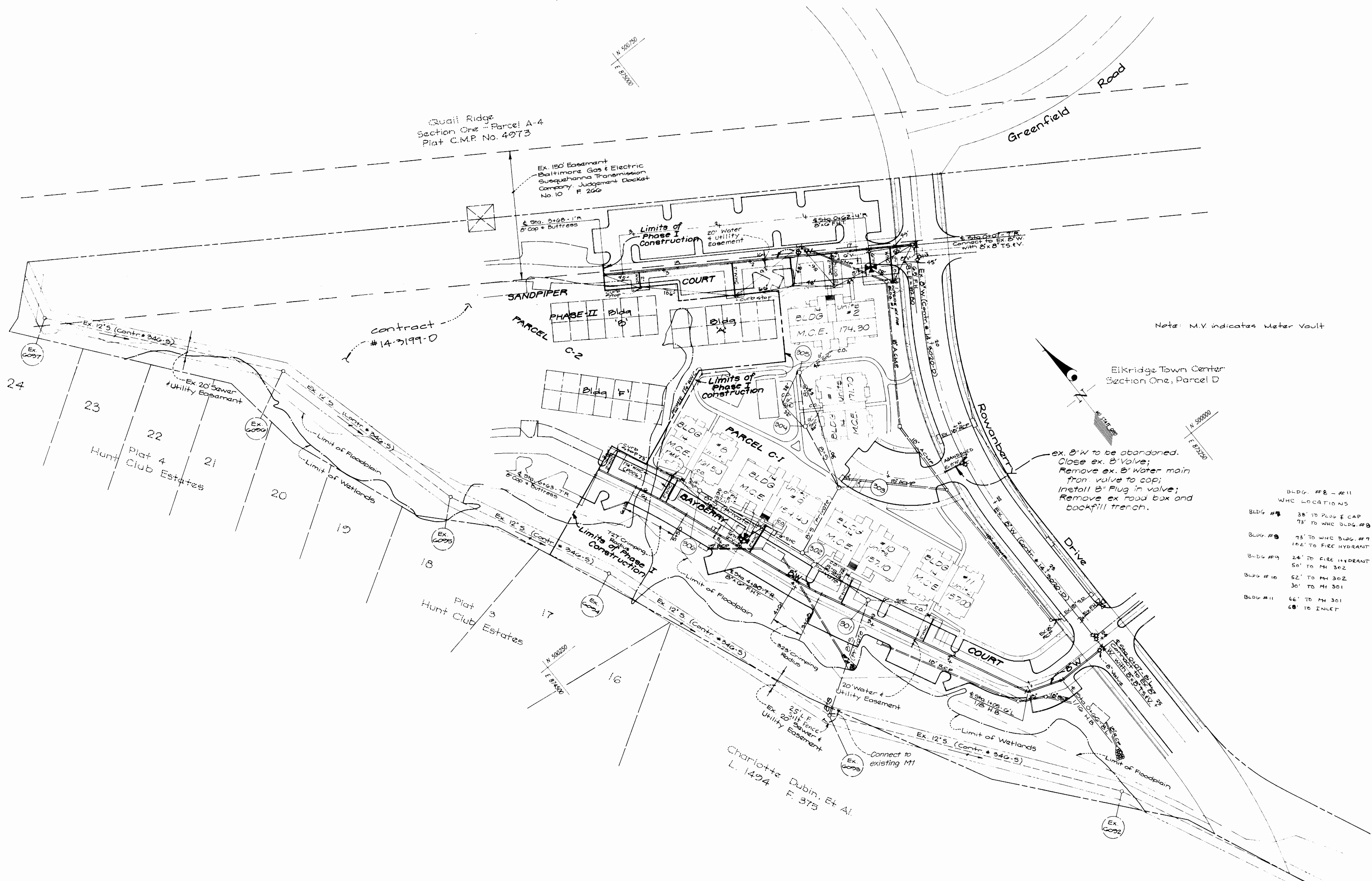
PUBLIC WATER AND SEWER CONSTRUCTION PLANS
TITLE SHEET

600' SCALE MAP NO. 38 BLOCK NO. 7

Elkridge Town Center
Section 2 - Parcels 'C-1' & 'C-2' (Phase I)
First Election District
Howard County, Maryland
Contract No. 14-3198-D

SCALE AS SHOWN

SHEET 1 OF 3



- BLDG. #8 - #11
WHC LOCATIONS
- BLDG #8 38' TO PLUG & CAP
73' TO WHC BLDG. #9
 - BLDG #9 73' TO WHC BLDG. #7
162' TO FIRE HYDRANT
 - BLDG #10 24' TO FIRE HYDRANT
50' TO MH 302
30' TO MH 301
 - BLDG #11 66' TO MH 301
68' TO INLET

DEPARTMENT OF PUBLIC WORKS
HOWARD COUNTY, MARYLAND

GW GUTSCHICK LITTLE & WEBER, P.A.
ENGINEERS, PLANNERS, SURVEYORS

3509 NATIONAL DRIVE SUITE 250 HURTONSVILLE OFFICE PARK
BURTONSVILLE, MD 20866
(301) 421-4024

DES: G.A.H.				
DRN: G.A.H.				
CHK: C.K.G.				
DATE: May 1992				
BY: [Signature]	NO.	REVISION	DATE	
	1	RELOCATE 1" M.V. AND PUBLIC TR. WHC TO POOL HOUSE REVISE ALIGNMENT OF PRIV. N.H.C. FOR 2" M.V. TO CURB STOPS. BUILD AS SHOWN. M.V. FOR POOL HOUSE. M.V. FOR POOL HOUSE. M.V. FOR POOL HOUSE. M.V. FOR POOL HOUSE.	4/11/92	
	2	REV. M.V. TYPES, BUILDING LOCATIONS. & added note	5/15/92	

PUBLIC WATER and SEWER
CONSTRUCTION PLANS

Elkridge Town Center
Section 2 - Parcels 'C-1' & 'C-2' (Phase I)
First Election District
Howard County, Maryland
Contract No: 14-3198-D

SCALE
AS
SHOWN

SHEET
2 OF 3

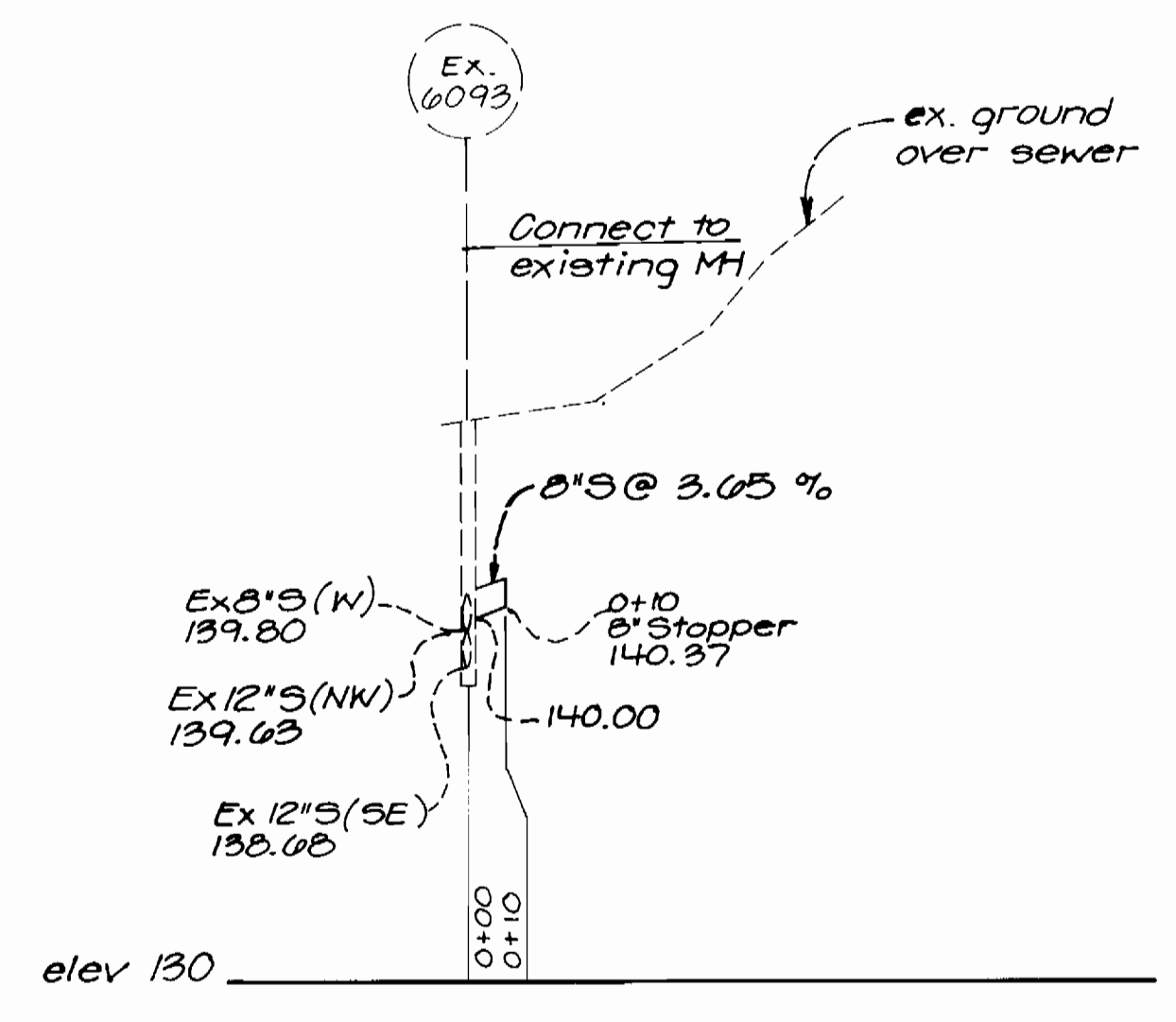
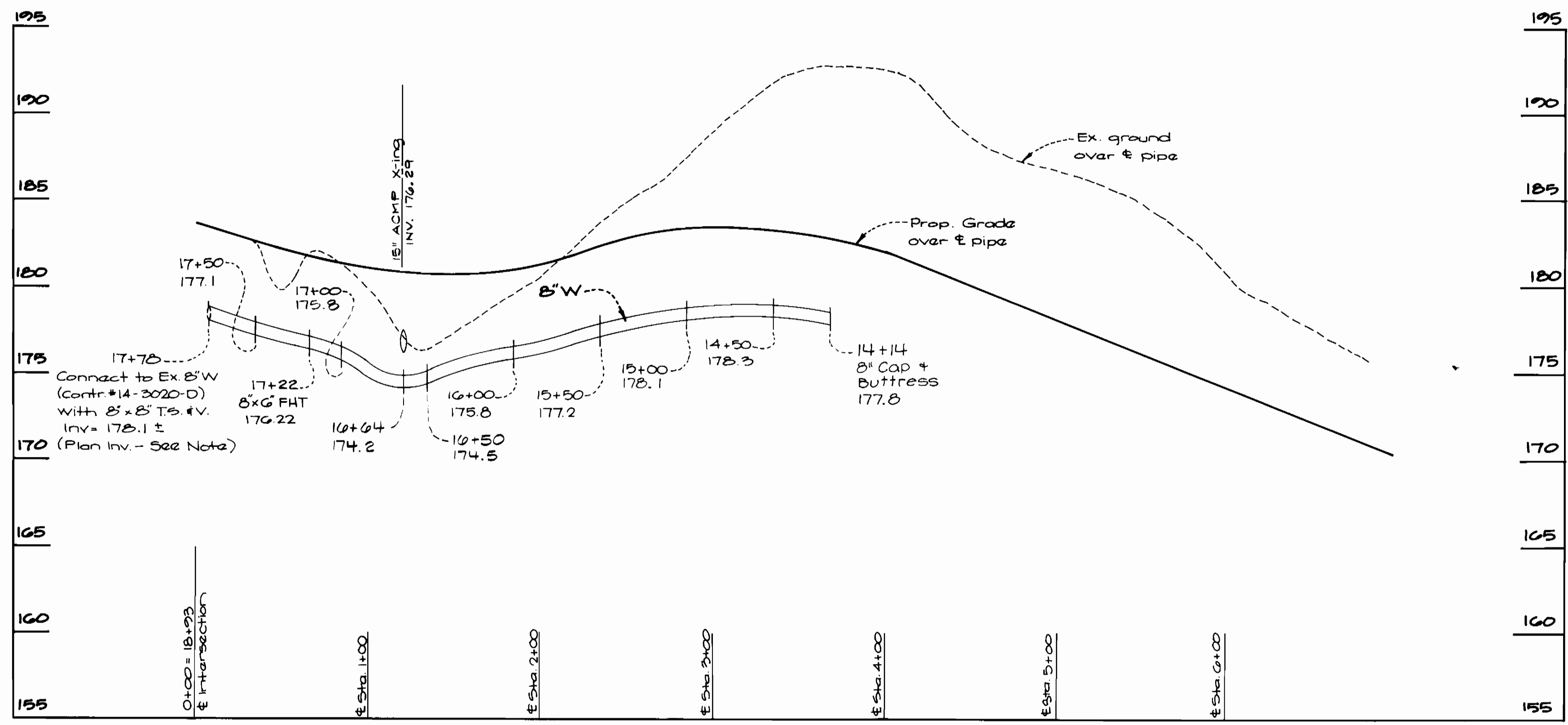
James P. Law 5/21/92
DIRECTOR OF PUBLIC WORKS
DATE

Robert V. Benjamin 5-15-92
CHIEF, BUREAU OF UTILITIES
DATE

Robert V. Benjamin 5-21-92
CHIEF, BUREAU OF ENGINEERING
DATE

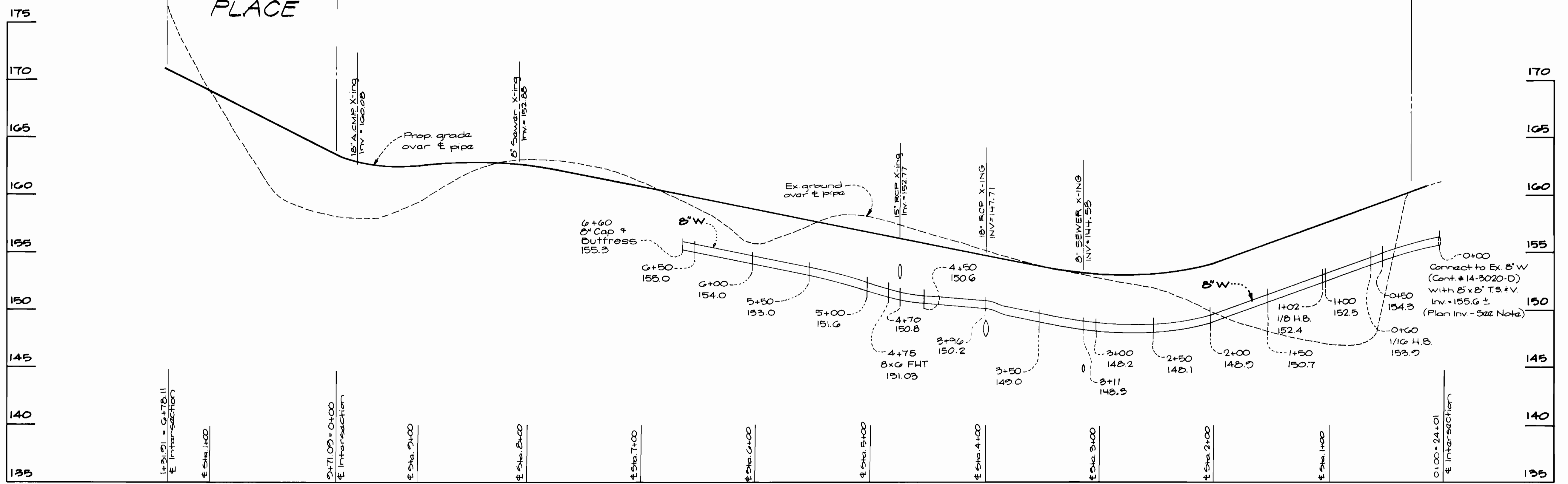
Robert V. Benjamin 5-21-92
CHIEF, LAND DEVELOPMENT DIV.
DATE

SANDPIPER COURT



REDWING PLACE

BAYBERRY COURT



DEPARTMENT OF PUBLIC WORKS
HOWARD COUNTY, MARYLAND

James P. ... 5/2/92
DIRECTOR OF PUBLIC WORKS DATE

Richard ... 5/15/92
CHIEF, BUREAU OF UTILITIES DATE

... 5/21/92
CHIEF, LAND DEVELOPMENT DIV. DATE

G&W GUTSCHICK LITTLE & WEBER, P.A.
ENGINEERS, PLANNERS, SURVEYORS

3909 NATIONAL DRIVE SUITE 250 BURTONEVILLE OFFICE PARK
BURTONSVILLE, MD 20886
(301) 421-4024

DES: G.A.H.
DRN: G.A.H.
CHK: C.K.G.
DATE: May 1992

PUBLIC WATER and SEWER PROFILES

600' SCALE MAP NO. 38 BLOCK NO. 7

Elkridge Town Center
Section 2 - Parcels 'C-1' + 'C-2' (Phase I)
First Election District
Howard County, Maryland
Contract No: 14-3198-D

SCALE AS SHOWN
SHEET 3 OF 3