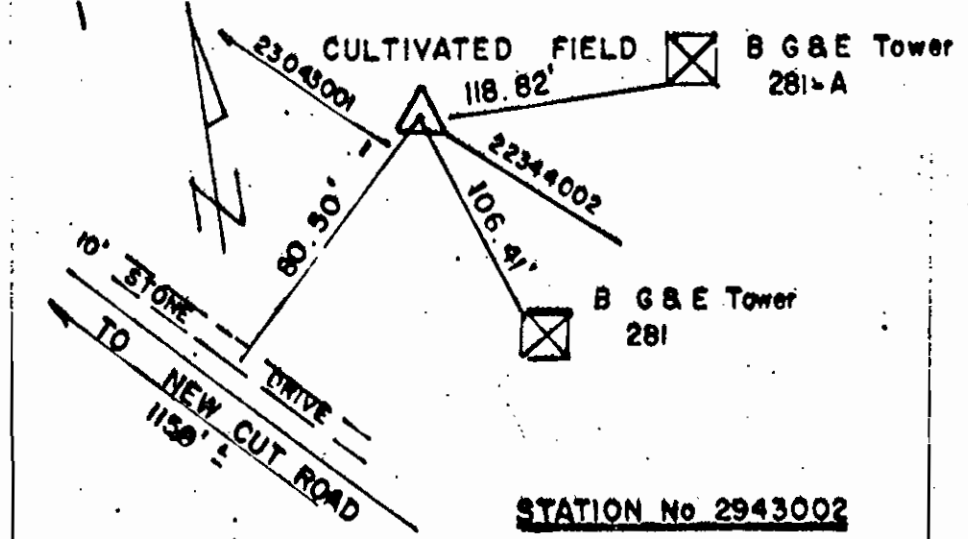
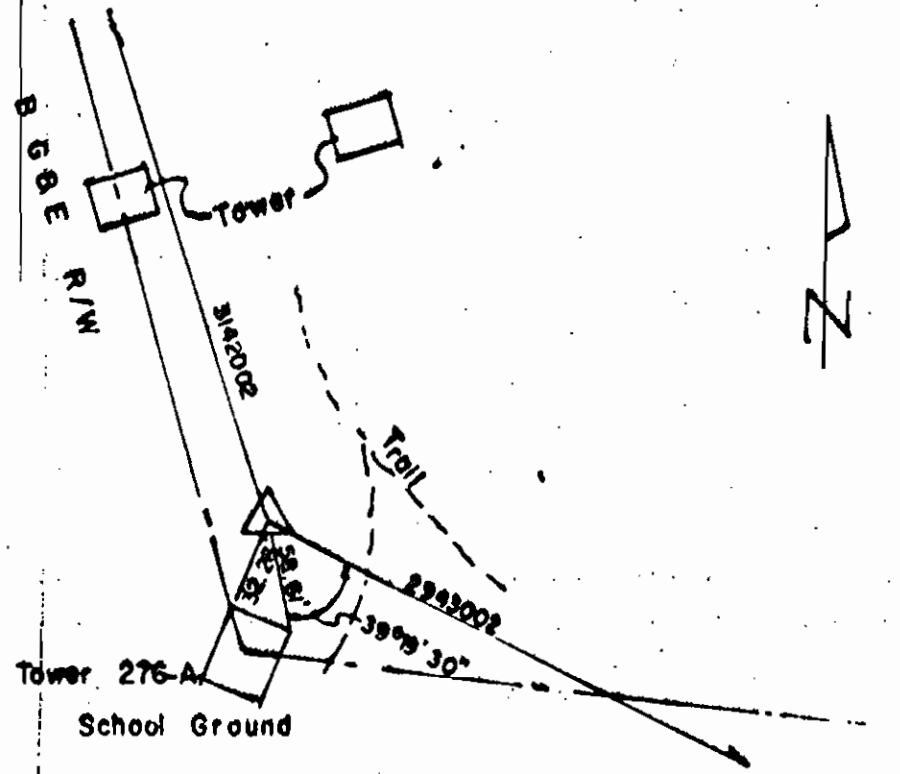


QUANTITIES				
ITEMS	QUANTITIES ESTIMATED	AS - BUILT		
		QUANTITIES	TYPE	MANUFACTURER/SUPPLIER
8" SEWER	680 LF.	660 LF		J.M. MANUFACTURING
8" WATER	550 LF.	550 LF		ATLANTIC
6" WATER	15 LF.	20 LF		ATLANTIC
STD. MH	1 EA.	1 EA		ATLANTIC CONCRETE PRODUCTS
TERMINAL MH	1 EA.	1 EA		ATLANTIC CONCRETE PRODUCTS
6" FH	1 EA.	1 EA		MUELLER
3/4" -WHC	250 LF.	240 LF		CAMBRIDGE - LEE
4" SHC	240 LF.	240 LF		J.M. MANUFACTURING
W.T. STD. MH	2 EA.	2 EA		ATLANTIC
8"x8" T.S.V.	1 EA.	1 EA		MUELLER
NAME OF UTILITY CONTRACTOR: UTILITIES UNLIMITED				
SURVEY AND DRAFTING DIVISION AS BUILT DATE: _____				



HOWARD CO. MON. # 2943002
 CONCRETE MONUMENT 0.5' BELOW SURFACE LOCATED ON THE TRANSMISSION LINE
 1700' NORTH OF THE INTERSECTION OF MD. RTE 108 AND NEW CUT ROAD AND
 150' EAST OF NEW CUT ROAD. COORDINATE: N 85459.948 E 85368.908

HOWARD CO. MON. # 3043001 ELEV. 427.92
 CONCRETE MONUMENT AT TRANSMISSION LINE BACK OF SCHOOL.
 COORDINATE: N 81205.802 E 857478.887

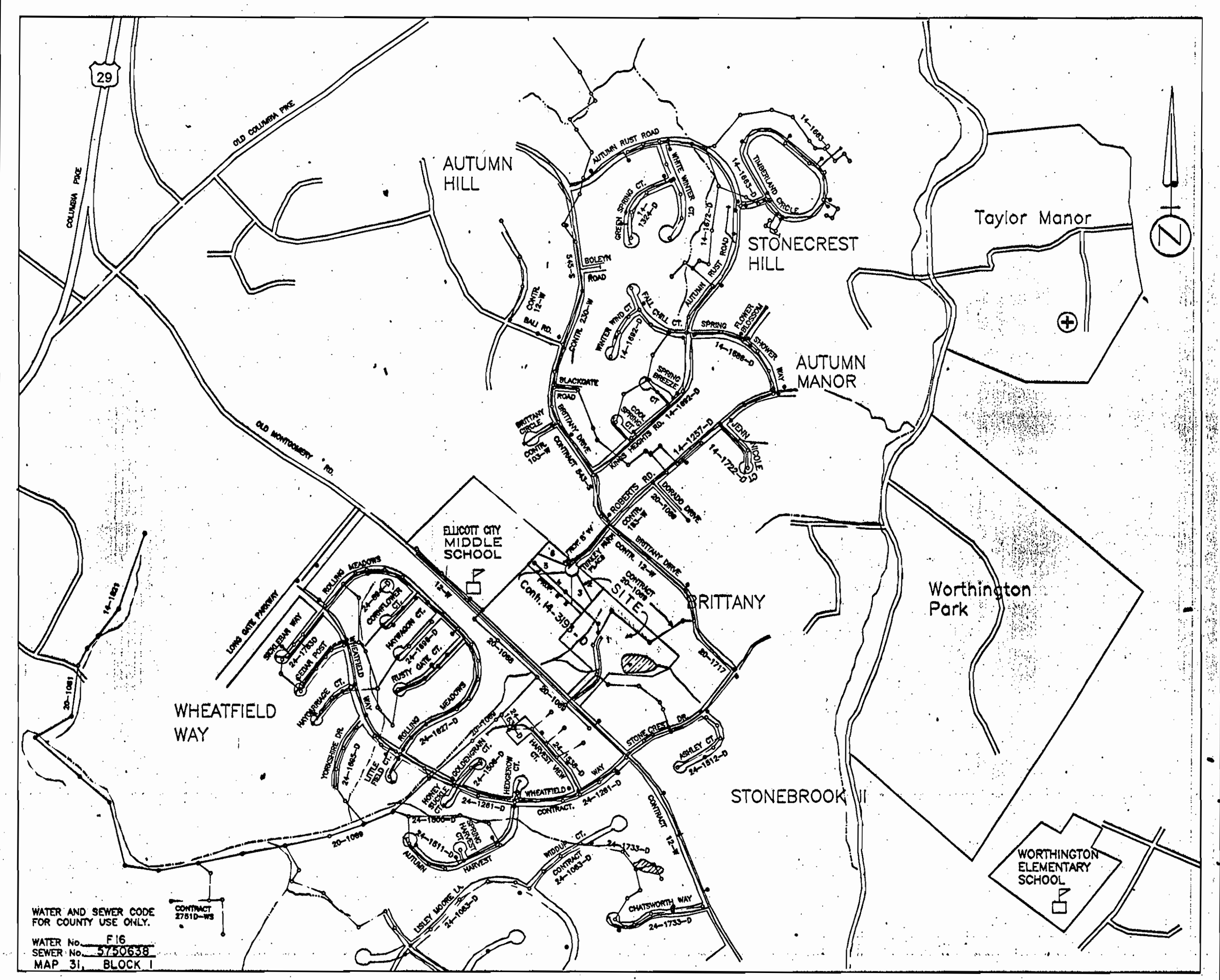
SEDIMENT CONTROL MEASURES FOR THIS CONTRACT WILL BE IMPLEMENTED IN ACCORDANCE WITH ARTICLE 15 OF THE HOWARD COUNTY DESIGN MANUAL AND STANDARDS AND SPECIFICATIONS FOR SOIL EROSION AND SEDIMENT CONTROL IN DEVELOPING AREAS AND ALSO AS SHOWN ON THE GRADING AND SEDIMENT CONTROL PLAN F-91-150

REVIEW FOR HOWARD COUNTY SOIL CONSERVATION DISTRICT AND MEETS TECHNICAL REQUIREMENTS.

THIS DEVELOPMENT PLAN IS APPROVED FOR EROSION AND SEDIMENT CONTROL BY HOWARD COUNTY SOIL CONSERVATION DISTRICT.

APPROVED: *James M. Hill* 4/19/93 DATE
 SOIL CONSERVATION SERVICE

APPROVED: *Jose H. Escalante* 4/19/93 DATE
 HOWARD COUNTY SOIL CONSERVATION DISTRICT



WATER AND SEWER CODE FOR COUNTY USE ONLY.
 WATER No. F16
 SEWER No. 5750538
 MAP 31, BLOCK 1

TYPE OF BUILDING: SINGLE FAMILY
 NUMBER OF LOTS: 5
 No. OF WATER HOUSE CONNECTIONS: 5
 No. OF SEWER HOUSE CONNECTIONS: 5
 DRAINAGE AREA: 1.00 AC

LOCATION MAP
 SCALE: 1" = 600'

CONTRACT No. 24-3193-D TURKEY FARM PLACE WATER AND SEWER MAIN EXTENSION HOWARD COUNTY, MARYLAND DEPARTMENT OF PUBLIC WORKS

Note: This sheet no. 1A will supersede the sheet #1 of Contract 24-3193-D approved by The Director of Public Works on 9/22/92.

- After installation has been completed, make post construction grades and elevations of temporarily impacted nontidal wetlands the same as the original grades and elevations.
- To protect important aquatic species, in-stream work is prohibited as determined by the classification of the stream as follows:
 a) Class I Waters. In-stream work may not be conducted during the period March 1 through June 15, inclusive, during any year.

GENERAL NOTES

- APPROXIMATE LOCATION OF EXISTING MAINS ARE SHOWN. THE CONTRACTOR SHALL TAKE ALL NECESSARY PRECAUTIONS TO PROTECT EXISTING MAINS, SERVICES AND MAINTAIN UNINTERRUPTED SUPPLY. ANY DAMAGE INCURRED SHALL BE REPAIRED IMMEDIATELY TO THE SATISFACTION OF THE ENGINEER, AT THE CONTRACTOR'S EXPENSE.
- ALL HORIZONTAL CONTROLS ARE BASED ON MARYLAND STATE COORDINATES.
- ALL VERTICAL CONTROLS ARE BASED ON U.S.G.S. DATUM.
- ALL PIPE ELEVATIONS SHOWN ARE INVERT ELEVATIONS.
- CLEAR ALL UTILITIES BY A MINIMUM OF 6". CLEAR ALL POLES BY 2'-0" MINIMUM OR TUNNEL AS REQUIRED. ANY COST INCURRED TO THE CONTRACTOR FOR TUNNELING OR BRACING AT POLES SHALL BE INCLUDED IN UNIT PRICES BID FOR CONSTRUCTION OF THE MAIN.
- FOR DETAILS NOT SHOWN ON THE DRAWINGS USE HOWARD COUNTY STANDARD DETAILS, 1989 AMENDMENTS.
- FOR MATERIALS AND CONSTRUCTION METHODS USE HOWARD COUNTY SPECIFICATIONS.
- CONTRACTOR SHALL LOCATE EXISTING UTILITIES A MINIMUM OF TWO (2) WEEKS IN ADVANCE OF CONSTRUCTION OPERATIONS IN THE VICINITY PROPOSED UTILITIES AT HIS OWN EXPENSE.
- CONTRACTOR SHALL NOTIFY THE FOLLOWING UTILITIES OR AGENCIES AT LEAST FIVE (5) WORKING DAYS BEFORE STARTING WORK SHOWN ON THESE PLANS.

STATE HIGHWAY ADMINISTRATION	531-5533
BALTIMORE GAS AND ELECTRIC COMPANY-UNDERGROUND ELECTRIC DISTRIBUTION	685-0123
BALTIMORE GAS AND ELECTRIC COMPANY-UNDERGROUND GAS DISTRIBUTION	685-0123
CUSTOMER SERVICE	234-5611
ENGINEERING - "DAMAGE CONTROL"	685-0123
"MISS UTILITY"	1-800-559-0100
CHESAPEAKE AND POTOMAC (C & P) TELEPHONE COMPANY	725-8978
AMERICAN TELEPHONE AND TELEGRAPH - CABLE LOCATION DIVISION	593-3533
COLONIAL PIPELINE COMPANY	785-1390
BUREAU OF UTILITIES HOWARD COUNTY	992-2368
- TREE ARE TO BE PROTECTED FROM DAMAGE TO MAXIMUM EXTENT. TREES LOCATED WITHIN THE CONSTRUCTION STRIP ARE NOT TO BE REMOVED OR DAMAGE BY THE CONTRACTOR.
- CONTRACTOR SHALL REMOVE TREES, STUMPS, AND ROOTS ALONG LINE OF EXCAVATION AS DIRECTED BY THE ENGINEER. PAYMENT FOR SUCH REMOVAL SHALL BE INCLUDED IN THE UNIT BID FOR CONSTRUCTION OF THE MAIN.
- PLACE REGULATION "MEN WORKING" AND WARNING SIGNS AS REQUIRED TO COMPLY WITH MARYLAND STATE ADMINISTRATION MANUAL OF TRAFFIC CONTROL FOR HIGHWAY CONSTRUCTION AND MAINTENANCE.
- TOP OF ALL WATER MAINS TO HAVE A MINIMUM OF 3'-1/2" COVER UNLESS OTHERWISE NOTED.
- VALVES ADJACENT TO TEES SHALL BE STRAPPED TO TEES.
- BLOCK ALL FITTINGS WITH CONCRETE.
- BURYLENE ELEVATION ON ALL FIRE HYDRANTS SHALL BE SET TO THE ELEVATIONS SHOWN ON DRAWINGS. ALL FIRE HYDRANTS SHALL BE STRAPPED AND BUTTRESSED WITH CONCRETE IN ACCORDANCE WITH STANDARD DETAILS. SOILS AROUND THE FIRE HYDRANT TO BE COMPACTED IN ACCORDANCE WITH SECTION 10.03 AND 10.08 OF THE STANDARD SPECIFICATIONS.
- ALL WATER HOUSE CONNECTIONS SHALL BE FOR INSIDE METER SETTING.
- THE CONTRACTOR SHALL NOT OPERATE ANY WATER MAIN VALVES ON THE EXISTING SYSTEM.
- ALL SEWER MAINS SHALL BE C.S.P.X., P.C.S.P., V.C.P.X., OR P.V.C. UNLESS OTHERWISE NOTED.
- THE CONTRACTOR SHALL PROVIDE A JOINT IN ALL SEWER MAINS WITHIN 2'-0" OF EXTERIOR MANHOLE WALL.
- ALL MANHOLES SHALL BE 4'-0" INSIDE DIAMETER, UNLESS OTHERWISE NOTED.
- MANHOLES SHOWN WITH 12" & 16" WALLS ARE BRICK MANHOLES ONLY.
- MANHOLES DESIGNATED W.T. IN PLAN AND PROFILE SHALL HAVE WATER-TIGHT FRAME AND COVERS, STANDARD DETAIL 5.25 WHERE WATER-TIGHT MANHOLE FRAME AND COVER IS USED, SET A TOP OF FRAME 1'-6" ABOVE FINISHED GRADE, STANDARD DETAIL C.5.41.
- ALL D.I.P. FITTINGS SHALL BE IN ACCORDANCE WITH A WMA SPECIFICATIONS C-153 DUCTILE IRON COMPACT FITTINGS, 3"-12" WATER AND OTHER LIQUIDS.
- THE CONTRACTOR SHALL NOTIFY THE BUREAU OF HIGHWAYS, HOWARD COUNTY, AT (410) 313-2450 AT LEAST FIVE WORKING DAYS BEFORE ANY OPEN CUT OF ANY COUNTY ROAD OR BORING/JACKING OPERATION IN COUNTY ROADS FOR LAYING WATER/SEWER MAINS OR HOUSE CONNECTIONS. THE APPROVAL OF THESE DRAWINGS WILL CONSTITUTE COMPLIANCE WITH DPW REQUIREMENTS PER SECTION 18.114(G) OF THE HOWARD COUNTY COUNTY CODE.

CONDITIONS AND MANAGEMENT PRACTICES FOR WORKING IN NONTIDAL WETLANDS
 After Grading Permit is obtained and all erosion and sediment control measures are in place, during construction, and prior to stabilizing with permanent seeding, the following conditions must be observed:

- Remove excess fill or construction material or debris to an upland disposal area outside of the nontidal wetlands and their buffers.
- Place materials in a location and manner which does not adversely impact surface or subsurface water flow into or out of the nontidal wetland.
- If backfill is obtained from other than the originally excavated material, use clean material free of waste metal products, unsightly debris, toxic material or any other deleterious substance.
- Store heavy equipment in upland areas and/or suitably operate the equipment to prevent damage to the remaining nontidal wetlands.
- Rectify any nontidal wetlands temporarily impacted by any construction. All temporary fills shall be removed in their entirety on or before the completion of constructions.
- All stabilization in the wetland and buffer shall be of the following species: Annual Ryegrass (*Lolium multiflorum*), Millet (*Setaria italica*), Barley (*Hordeum sp.*), Oats (*Avena sp.*), and/or Rye (*Secale Cereale*). These species allow for the stabilization of the site while also allowing for the voluntary revegetation of natural wetland species. Other non-persistent vegetation may be acceptable, but must be approved by the Division. Kentucky 31 fescue shall not be utilized in the wetland or buffer areas. The area should be seeded and mulched to reduce erosion after construction activities have been completed. Upon completion of the project, nontidal wetlands and the 25-foot nontidal wetland buffer will not be moved or otherwise managed to prevent the establishment of woody vegetation.
- Repair and maintain any serviceable structure or fill so there is no permanent loss of nontidal wetlands in excess of nontidal wetlands lost under the original structure or fill.

DEPARTMENT OF PUBLIC WORKS
 HOWARD COUNTY, MARYLAND

James M. Hill 4/21/93 DATE
 DIRECTOR OF PUBLIC WORKS

John A. Quinn 4/21/93 DATE
 CHIEF, BUREAU OF ENGINEERING

Robert M. Brown 4/19/93 DATE
 CHIEF, BUREAU OF UTILITIES

ENGINEER
 JOSE H. ESCALANTE
 6623 HUNTERS WOOD CIRCLE
 BALTIMORE, MD. 21228-2528
 (410) 788-8930

Jose H. Escalante 4/19/93 DATE
 PROFESSIONAL ENGINEER

DES: JHE			
DRN: AVG			
CHK: JHE			
DATE:	BY:	NO.	REVISION

TITLE SHEET

DATE: 600' SCALE MAP NO. 31 BLOCK 1

CONTRACT No. 24-3193-D

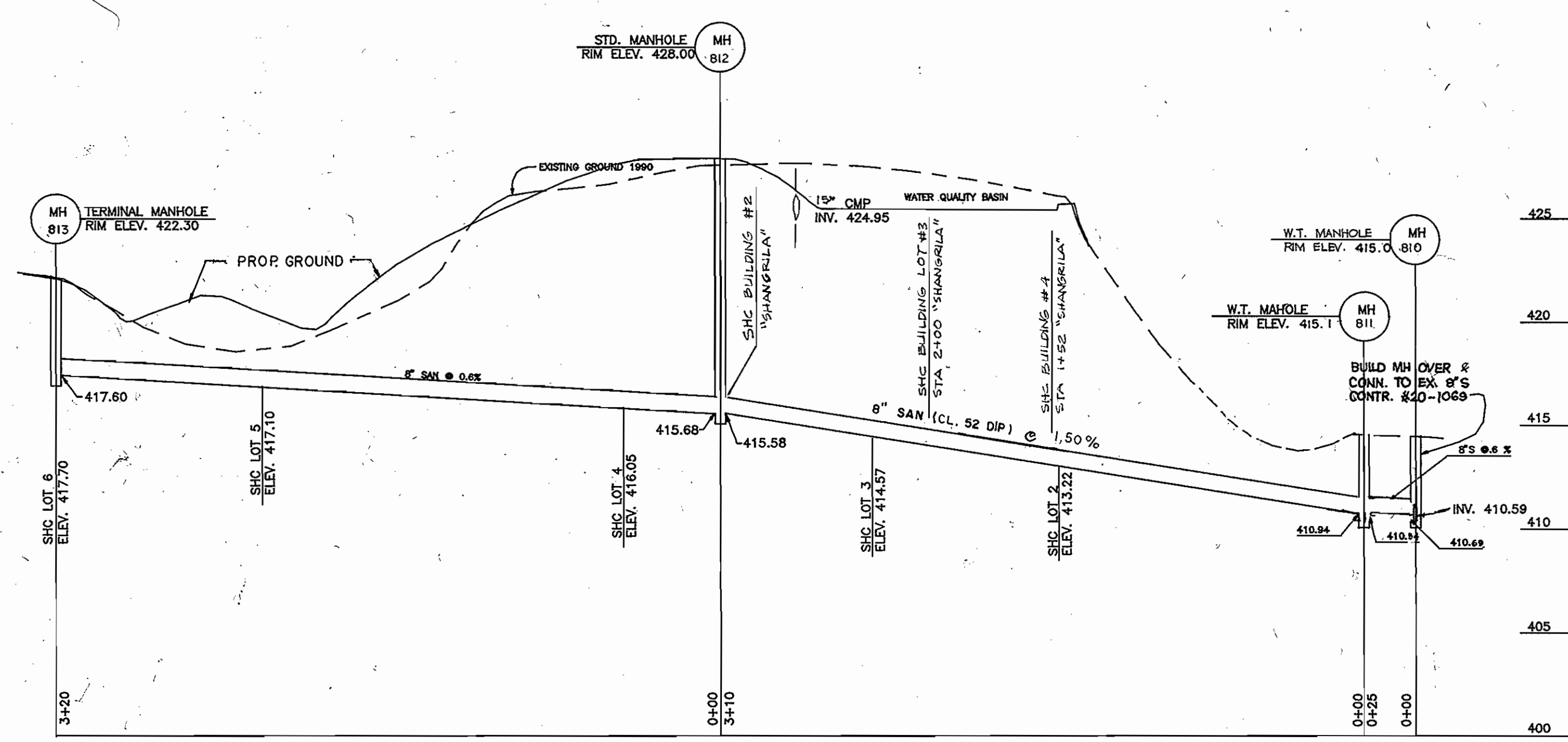
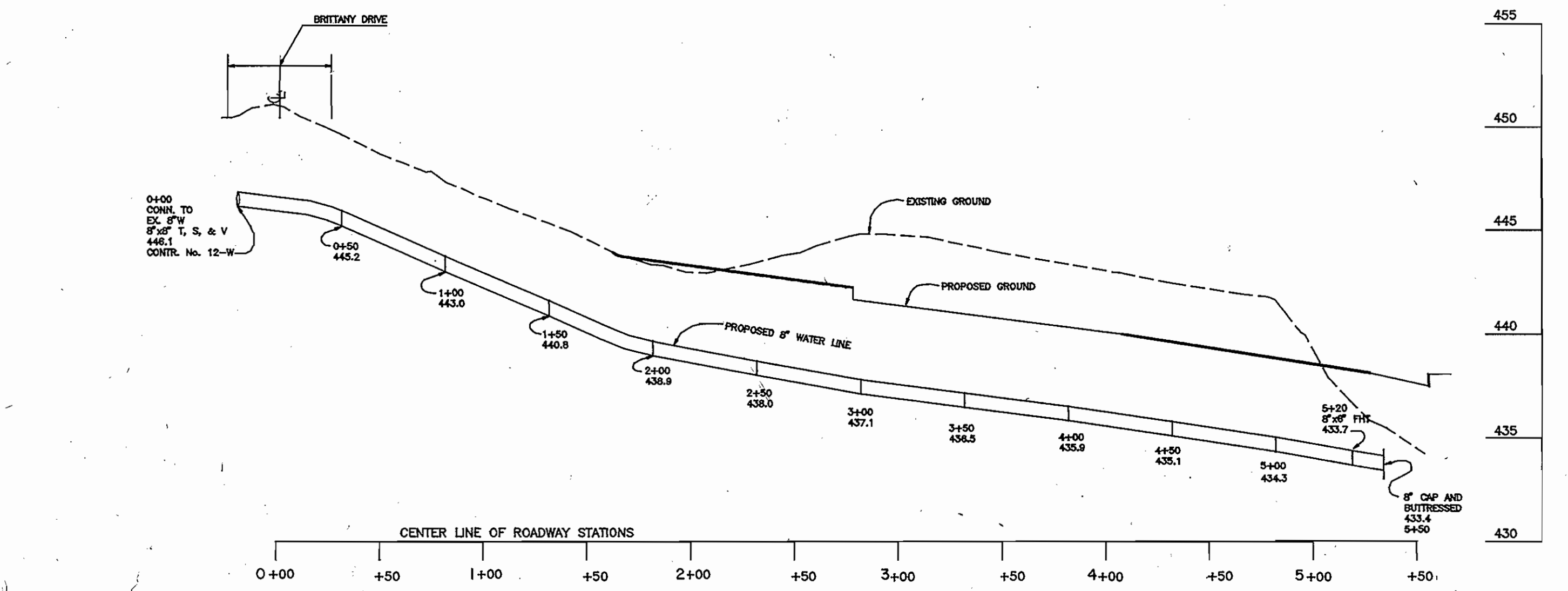
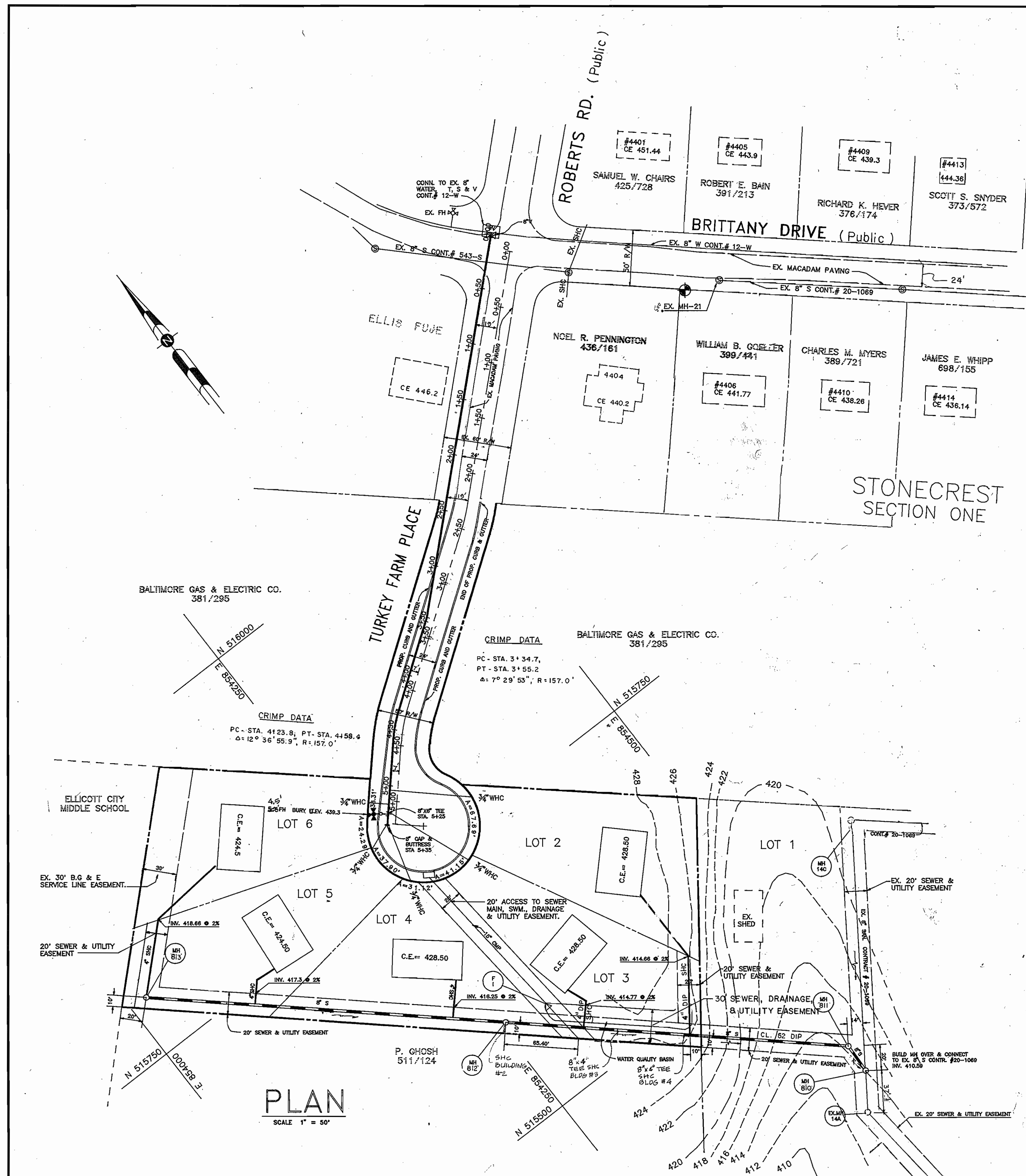
TURKEY FARM PLACE

LOTS 1 THRU 6
 TAX MAP 31 PARCEL 592
 2ND ELECTION DISTRICT HOWARD COUNTY, MARYLAND

SCALE AS SHOWN

SHEET 1A OF 2

AS-BUILT 11/10/94



DEPARTMENT OF PUBLIC WORKS HOWARD COUNTY, MARYLAND Director of Public Works: <i>[Signature]</i> 9/22/92 Chief, Bureau of Engineering: <i>[Signature]</i> 9-21-92 Chief, Bureau of Utilities: <i>[Signature]</i> 9-11-92 Chief, Land Development Division: <i>[Signature]</i>		ENGINEER JOSE H. ESCALANTE 6623 HUNTERS WOOD CIRCLE BALTIMORE, MD. 21228-2528 (410) 788-8930		DES : JHE DRN : AVG CHK : JHE DATE :		WATER AND SEWER MAINS PROFILE		CONTRACT No. 24-3193 TURKEY FARM PLACE LOTS 1 THRU 6 TAX MAP 31 PARCEL 592 2ND ELECTION DISTRICT HOWARD COUNTY, MARYLAND		SCALE AS SHOWN SHEET 2 OF 2
		STATE OF MARYLAND DEPARTMENT OF PUBLIC WORKS HOWARD COUNTY 9/10/92		BY NO. REVISION DATE		600' SCALE MAP NO. BLOCK				

A3-BUILT 11/19/94