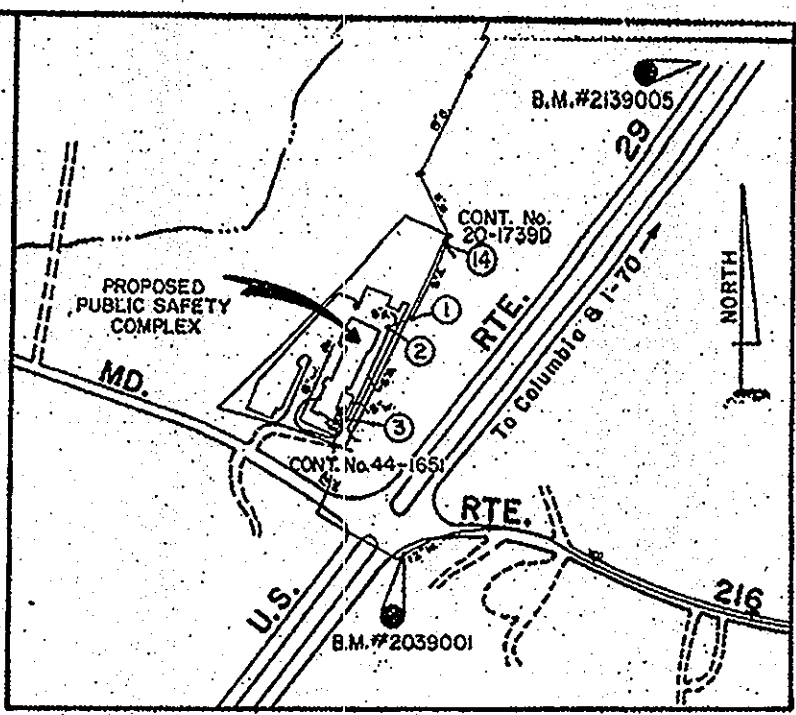


P. 176
HOWARD E. WESSEL, ET. UX.
268/561
ZONING: R

MATCH LINE - THIS SHEET

N' A COORDINATES
STA. 0+00 N 478,002.112
E 827,867.420
STA. 5+50 N 478,500.940
E 828,099.091

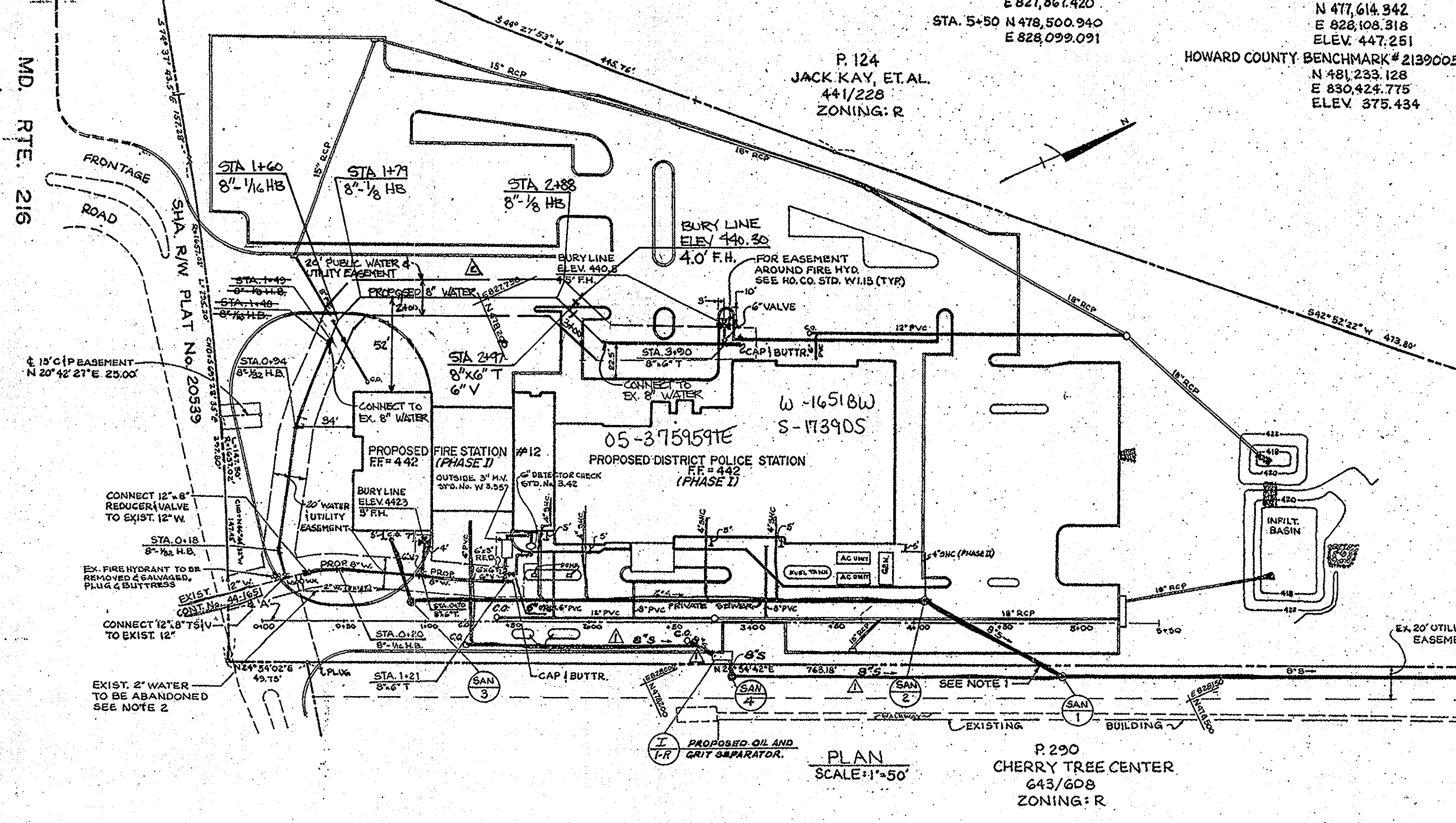
BENCHMARKS
HOWARD COUNTY BENCHMARK # 2039001
N 477,614.342
E 828,108.318
ELEV. 447.251
HOWARD COUNTY BENCHMARK # 2139005
N 481,233.128
E 830,424.775
ELEV. 375.434



VICINITY MAP
SCALE: 1" = 600'
TYPE OF BUILDING: GOVERNMENT FACILITY
NUMBER OF LOTS: 1 No. OF BLDGS: 1
No. OF WATER HOUSE CONNECTIONS: 1
No. OF SEWER HOUSE CONNECTIONS: 1
DRAINAGE AREA: LITTLE PATUXENT TREATMENT PLANT: SAVAGE
WATER AND SEWER CODE FOR COUNTY USE ONLY
WATER No. 422
SEWER No. 7890005
TEST GRADIENT

GENERAL NOTES

- Approximate location of existing mains are shown. The contractor shall take all necessary precautions to protect existing mains and services and maintain uninterrupted supply. Any damage incurred shall be repaired immediately to the satisfaction of the Engineer at the Contractor's expense.
- All horizontal controls are based on Maryland State Coordinates.
- All vertical controls are based on U.S.G.S. data.
- All pipe elevations shown are invert elevations.
- Clear all utilities by a minimum of 6". Clear all poles by 2' - 0" minimum or tunnel as required. The owner has contacted the utility companies and has made arrangements for bracing of poles as shown on the drawings. In the event the contractor's work requires the bracing of additional poles, any cost incurred by the owner for bracing of additional poles or damages shall be deducted from money owed the contractor. The contractor shall coordinate with the utility companies to schedule the bracing of the poles.
- For details not shown on the drawings, and for materials and construction methods use Howard County Design Manual, Volume IV, Standard Specifications and Detail for Construction (Latest Edition). The contractor shall have a copy of Volume IV on the job.
- Where test pits have been made on existing utilities, they are noted by the symbol at the location of the test pit. A note or notes containing the results of the test pit or pits is included on the drawings. Existing utilities in the vicinity of the proposed work for which test pits have not been dug shall be located by the contractor two weeks in advance of construction operations at his own expense.
- Contractor shall notify the following utility companies or agencies at least five working days before starting work shown on these plans:
State Highway Administration 531-5533
BGE Co. Contractor Services 850-4620
BGE Co. Under Ground Damage Control 787-0668
Miss Utility 1-800-257-7777
Colonial Pipeline Co. 795-1390
Howard County Department of Public Works
Bureau of Utilities 313-4900
- Trees and shrubs are to be protected from damage to maximum extent. Trees and shrubs located within the construction strip are not to be removed or damaged by the contractor.
- Contractor shall remove trees, stumps and roots along line of excavation. Payment for such removal shall be included in the unit price bid for construction of the main.



SEWER HOUSE CONNECTION
(INVERT ELEVATION @ 5' FROM BUILDING)

LOCATION AT SEWER MAIN	INVERT (5' FROM BLDG.)	REMARKS
SAN-3	436.47	CLEAN OUT
STA. 2+35 FROM SAN-2 TO SAN-3	438.40	
STA. 2+08 FROM SAN-2 TO SAN-3	437.82	
STA. 1+34 FROM SAN-2 TO SAN-3	438.40	
STA. 0+91 FROM SAN-2 TO SAN-3	438.40	
SAN-2	438.40	
STA. 1+50 FROM (I.H.R.) TO C.O.	438.40	

QUANTITIES			
ITEM	EST'D.	AS-BUILT	SUPPLIER
4" PVC (SHC)	211 L.F.		
8" PVC (SAN)	1061 L.F.		
SAN. M.H.	4 EA.		
8" D.I.P. (W)	520 L.F.		
6" D.I.P. (W)	75 L.F.		
3" D.I.P. (W)	26 L.F.		
1" COPPER (W)	244 L.F.		
FIRE HYD. (6")	2 EA.		
12" x 8" RED. I.V.	1 EA.		
12" x 8" T.S.I.V.	1 EA.		
8" x 6" T.S.I.V.	3 EA.		
1/2 BEND (8")	2 EA.		
1/4 BEND (8")	1 EA.		
1/2 BEND (6")	1 EA.		
1/4 BEND (6")	1 EA.		
2" VALVE	2 EA.		
2" x 4" WEE	1 EA.		
1/4 BEND (4")	2 EA.		
6" x 8" REDUCER	1 EA.		

* INCLUDES 6" VALVE.

WATER NOTES

- All water mains to be D.I.P. Class 52 unless otherwise noted.
- Tops of all water mains to have a minimum of 3-1/2' cover unless otherwise noted.
- Valves adjacent to tees shall be strapped to tees.
- All fittings shall be buttressed or anchored with concrete in accordance with the Standard Details unless otherwise provided for on the drawings.
- Fire hydrants shall be set to the bury line elevations shown on the drawings. All fire hydrants shall be strapped and buttressed with concrete in accordance with Standard Details. Soil around the fire hydrant shall be compacted in accordance with Section 1000 and 1005 of the Standard Specifications.
- The contractor shall not operate any water main valves on the existing water system.
- All water house connections shall be for inside meter setting unless otherwise noted on plans or in specifications.

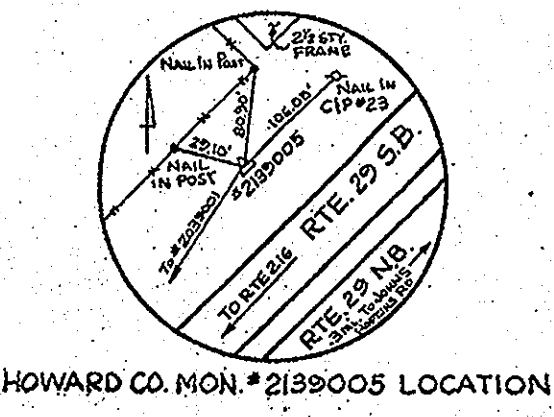
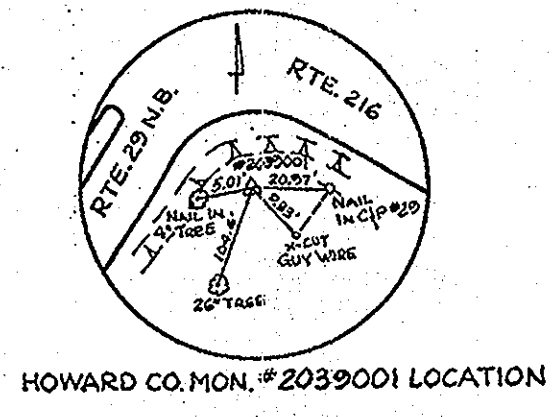
SEWER NOTES

- All sewer mains shall be DIP, RCP, VCPX, CSPX, RCCP and P.V.C. unless otherwise noted.
- The contractor shall provide a joint in all sewer mains within 2' - 0" of exterior manhole wall.
- All manholes shall be 4' - 0" inside diameter unless otherwise noted.
- Force mains shall be D.I.P. only.
- Manholes shown with 12" and 16" walls are for brick manholes only.
- Manholes designated W.T. in plan and profile shall have watertight frame and covers, Standard Detail GS-52. Where watertight manhole frame and cover is used, set top of frame 1" - 6" above finished grade unless otherwise noted on the drawings.
- House(s) with the symbol "C.N.S." indicates that cellar cannot be served.

SEDIMENT CONTROL MEASURES FOR THIS CONTRACT WILL BE IMPLEMENTED IN ACCORDANCE WITH SECTION 219 OF THE HOWARD COUNTY DESIGN MANUAL AND STANDARDS AND SPECIFICATIONS FOR SOIL EROSION AND SEDIMENT CONTROL IN DEVELOPING AREAS AND ALSO AS SHOWN ON THE GRADING AND SEDIMENT CONTROL PLAN

REVIEWED FOR HOWARD COUNTY SOIL CONSERVATION DISTRICT AND MEETS TECHNICAL REQUIREMENTS.
James M. Nelson 2/23/92
S.O. SOIL CONSERVATION SERVICE DATE

THIS DEVELOPMENT PLAN IS APPROVED FOR EROSION AND SEDIMENT CONTROL BY HOWARD SOIL CONSERVATION DISTRICT.
APPROVED:
John R. Roberts 2/25/92
HOWARD SOIL CONSERVATION DISTRICT DATE



NOTES:
1. 8" SANITARY SEWER MAIN TO BE MAINTAINED BY PUBLIC FROM EXIST. SAN. M.H. #14 TO WHERE IT CROSSES PROPERTY LINE, UPON WHERE MAINTENANCE WILL BE THE RESPONSIBILITY OF THE PROPERTY OWNER.
2. EXISTING METER AND EXISTING WATER HOUSE CONNECTION TO BE ABANDONED AT THE MAIN. THE CORPORATION STOP SHALL BE REMOVED AND A PLUG INSERTED. THE CONTRACTOR SHALL CONTACT THE BUREAU OF UTILITIES (313-4900) TO ARRANGE FOR RETURN OF THE MATERIALS, WATER METER, AND VAULT.

SEAL FOR REVISIONS DATED 8/18/09
BY *Shirley Mitchell*
PROFESSIONAL CERTIFICATION: I HEREBY CERTIFY THAT THESE DOCUMENTS WERE PREPARED OR APPROVED BY ME, AND THAT I AM A FULLY LICENSED PROFESSIONAL ENGINEER UNDER THE LAWS OF THE STATE OF MARYLAND, LICENSE NO. 38954, EXPIRATION DATE: 01-24-11

FOR REVISIONS DATED 8-18-09 AND AFTER
Patton Harris Rust & Associates, PC
Engineers, Surveyors, Planners, Landscape Architects
8818 Caticus Park Drive
Columbia, MD 21045
T 410.577.9300
F 410.607.9292

DEPARTMENT OF PUBLIC WORKS
HOWARD COUNTY, MARYLAND
James M. Nelson 2/24/92
DIRECTOR OF PUBLIC WORKS DATE
Robert J. ... 3-6-92
CHIEF, BUREAU OF UTILITIES DATE

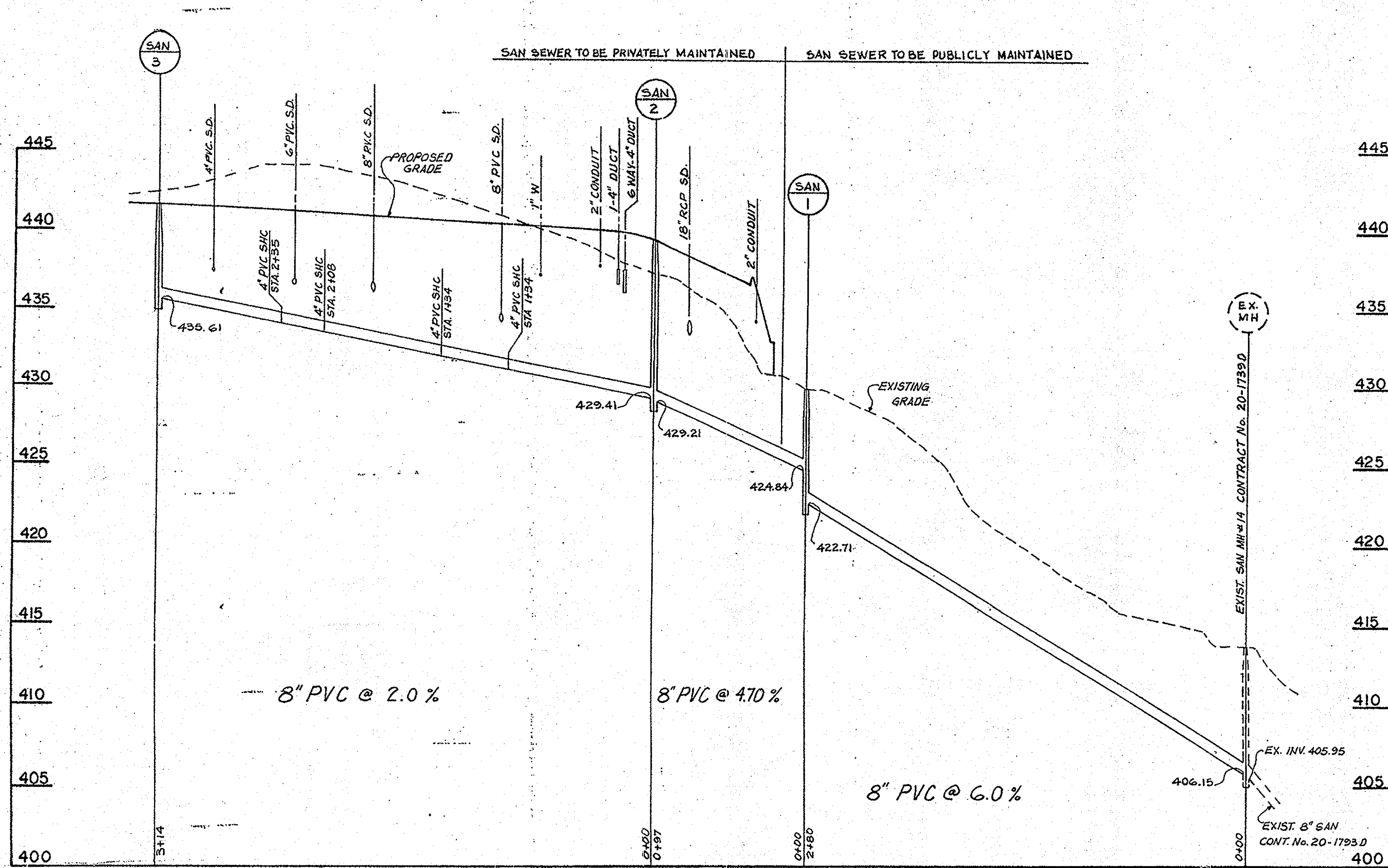
EBA ENGINEERING, INC.
Consulting Engineers
5800 METRO DRIVE
BALTIMORE MARYLAND 21215
(301) 358-7171

DES: _____
DRN: _____
CHK: 3/10/09
DATE: _____
REVISION: ADDITIONAL 8" SANITARY LINE

WATER AND SEWER PLAN

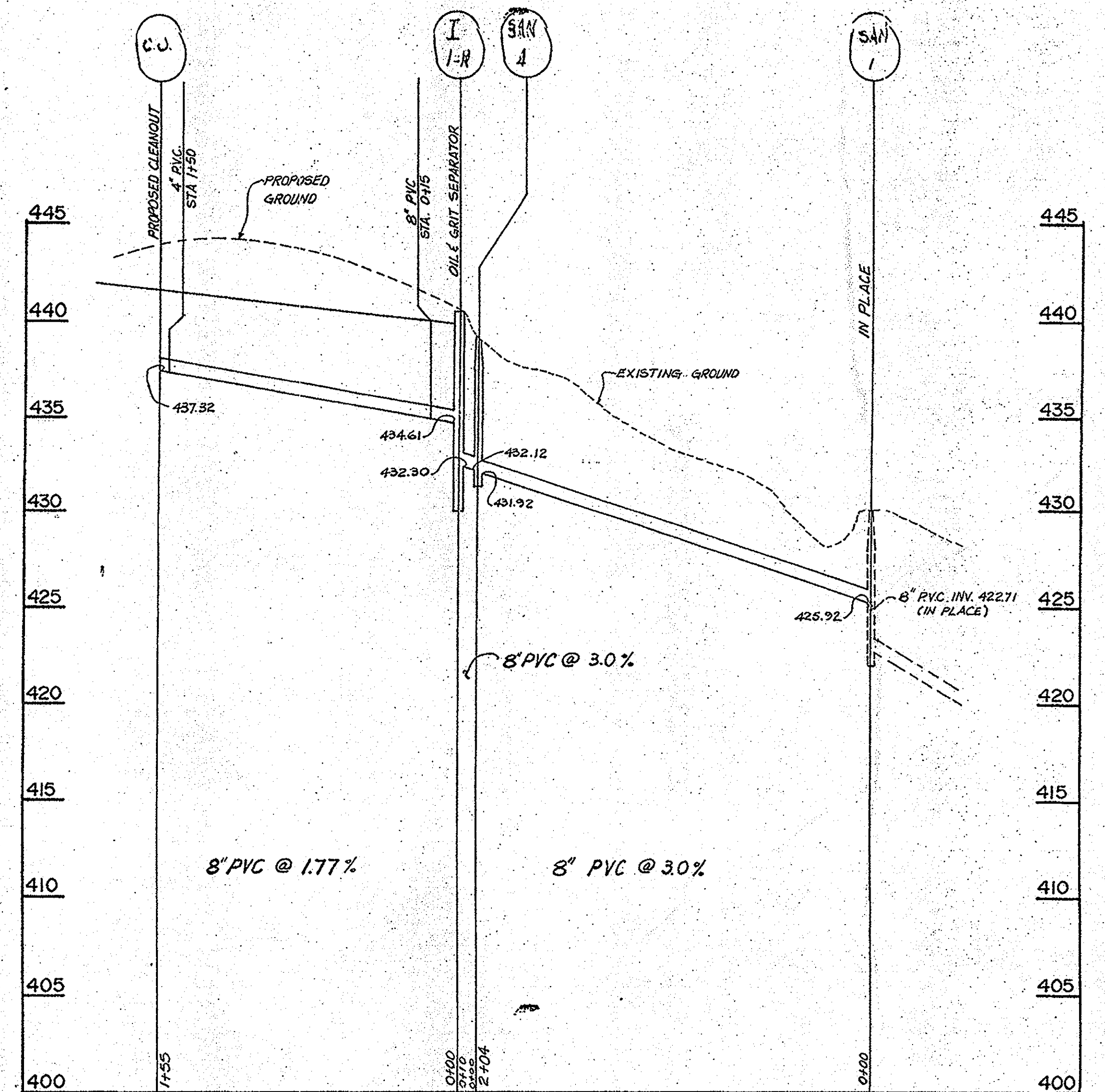
HOWARD COUNTY
PUBLIC SAFETY COMPLEX
CONTRACT No. 24-3175
ELECTION DISTRICT No. 5
HOWARD COUNTY, MARYLAND

SCALE AS SHOWN
SHEET 1 OF 2



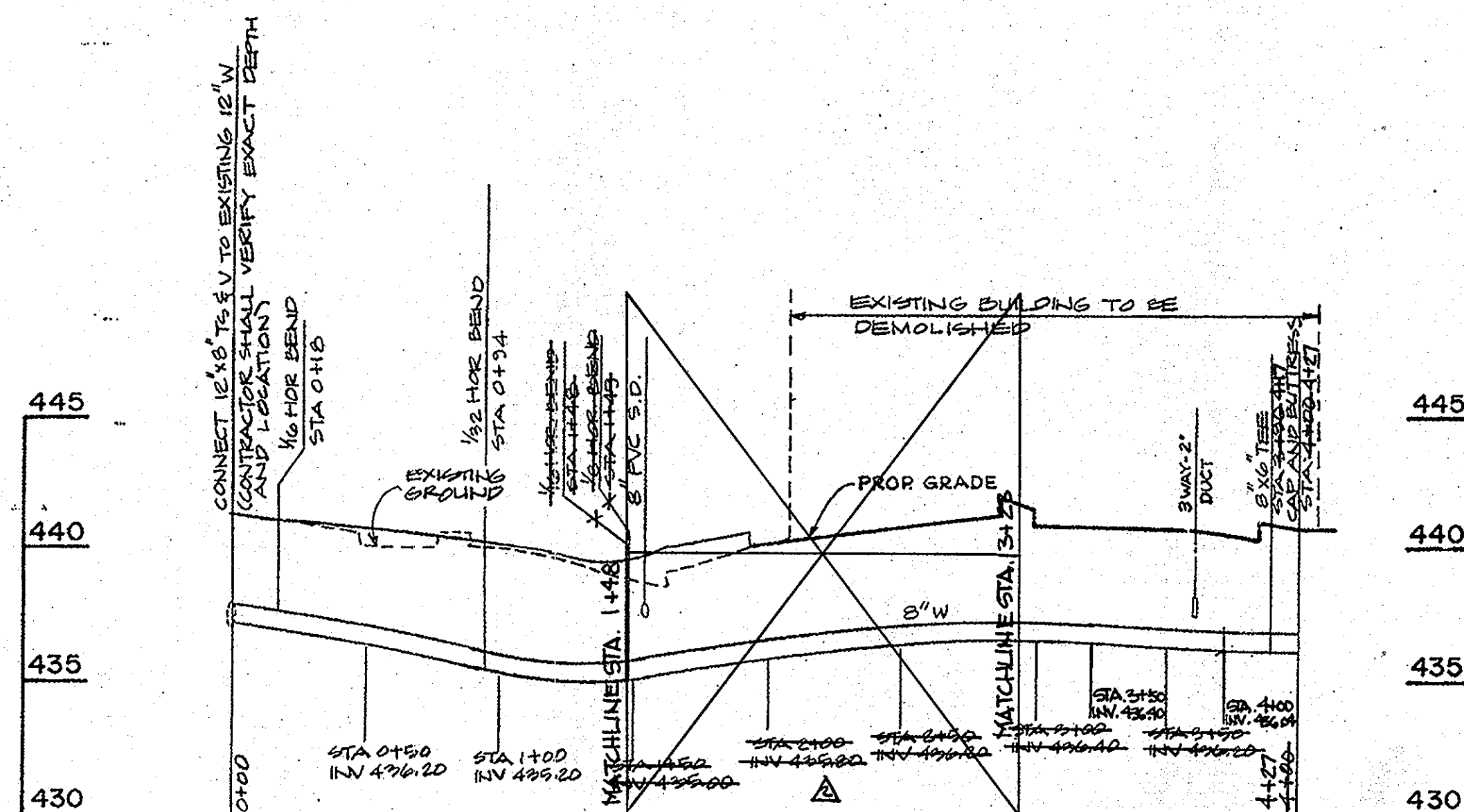
SANITARY SEWER PROFILE

SCALE: HORIZ. 1"=50'
VERT. 1"=5'



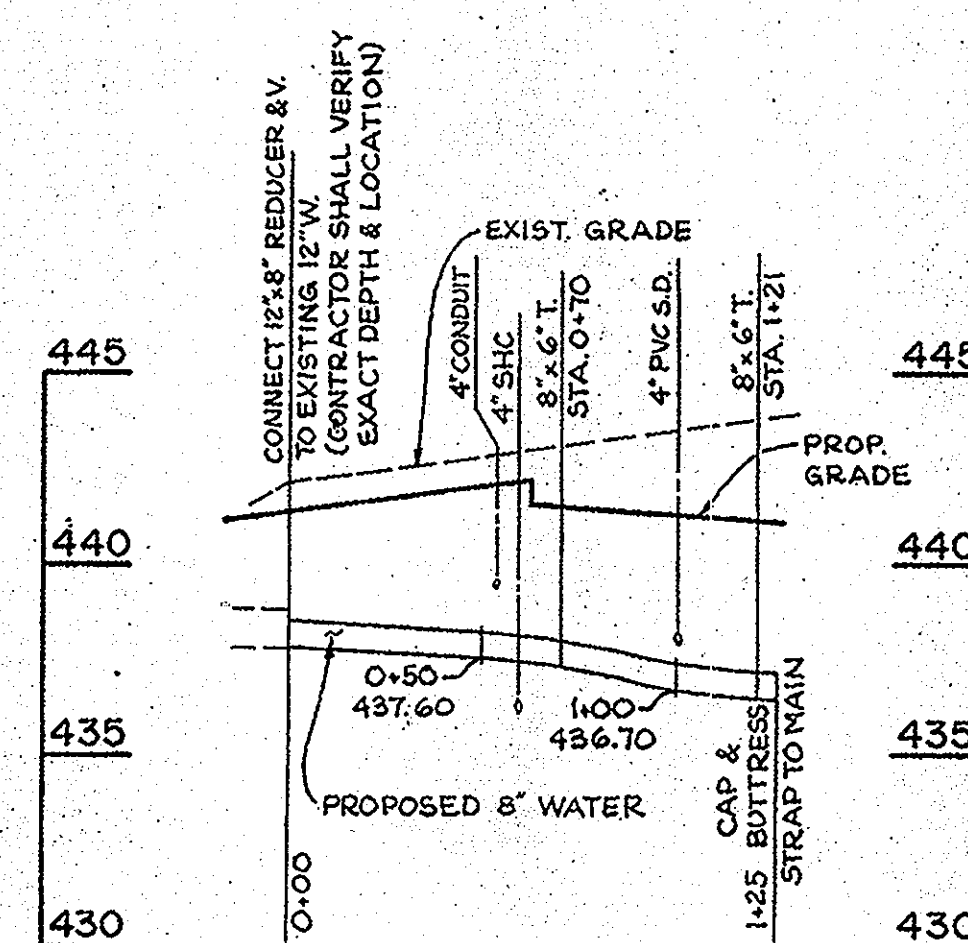
SANITARY SEWER PROFILE

SCALE: HORIZ. 1"=50'
VERT. 1"=5'



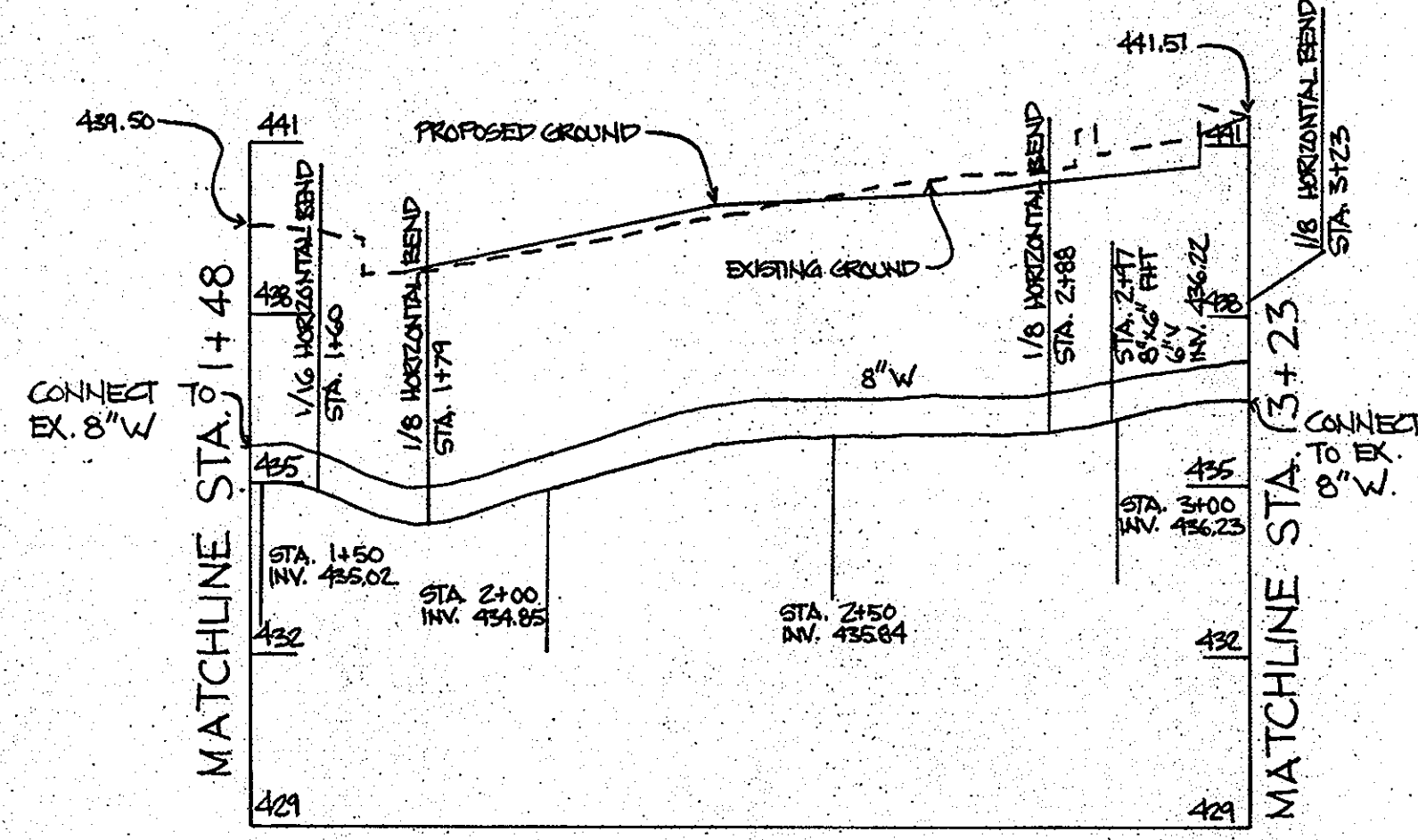
WATER MAIN PROFILE NORTH-EAST SIDE OF COMPLEX

SCALE: HORIZ. 1"=50'
VERT. 1"=5'



WATER MAIN PROFILE SOUTH-WEST SIDE OF COMPLEX

SCALE: HORIZ. 1"=50'
VERT. 1"=5'



WATER MAIN PROFILE

SCALE: HORIZ. 1"=30' - VERT. 1"=3'

SEAL FOR REVISIONS DATED 8/18/09

BY: *[Signature]*
PROFESSIONAL CERTIFICATION: I HEREBY CERTIFY THAT THESE DOCUMENTS WERE PREPARED OR APPROVED BY ME AND THAT I AM A FULLY LICENSED PROFESSIONAL ENGINEER UNDER THE LAWS OF THE STATE OF MARYLAND. LICENSE NO. 12882, EXPIRATION DATE: 12-31-11

FOR REVISIONS DATED 8-18-09 AND AFTER
Patton Harris Rust & Associates, PC
Engineers, Surveyors, Planners, Landscape Architects
8819 Centre Park Drive
Columbia, MD 21045
T 410.297.8900
F 410.297.9282

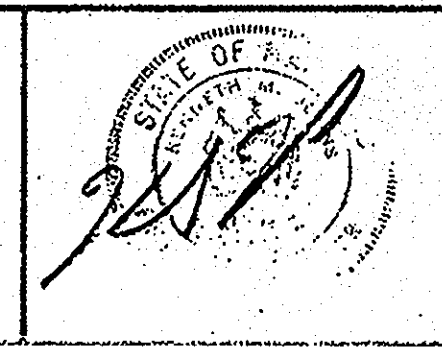
DEPARTMENT OF PUBLIC WORKS
HOWARD COUNTY, MARYLAND

[Signature] 2/24/12
DIRECTOR OF PUBLIC WORKS DATE

[Signature] 2-21-12
CHIEF, BUREAU OF ENGINEERING DATE

[Signature] 3-6-12
Chief, Bureau of Utilities

EBA ENGINEERING, INC.
Consulting Engineers
5800 METRO DRIVE
BALTIMORE MARYLAND 21215
(301) 358-7171



DES:	
DRN:	
CHK:	8/18/09
DATE:	1-28-12
BY:	NO.
REVISION:	REVISE WATER PROFILE
REVISION:	ADDITIONAL 8" SANITARY LINE

WATER AND SEWER PROFILES

600' SCALE MAP NO. _____ BLOCK NO. _____

HOWARD COUNTY
PUBLIC SAFETY COMPLEX
CONTRACT No. 24-3175
ELECTION DISTRICT No. 5
HOWARD COUNTY, MARYLAND

SCALE AS SHOWN
SHEET 2 OF 2