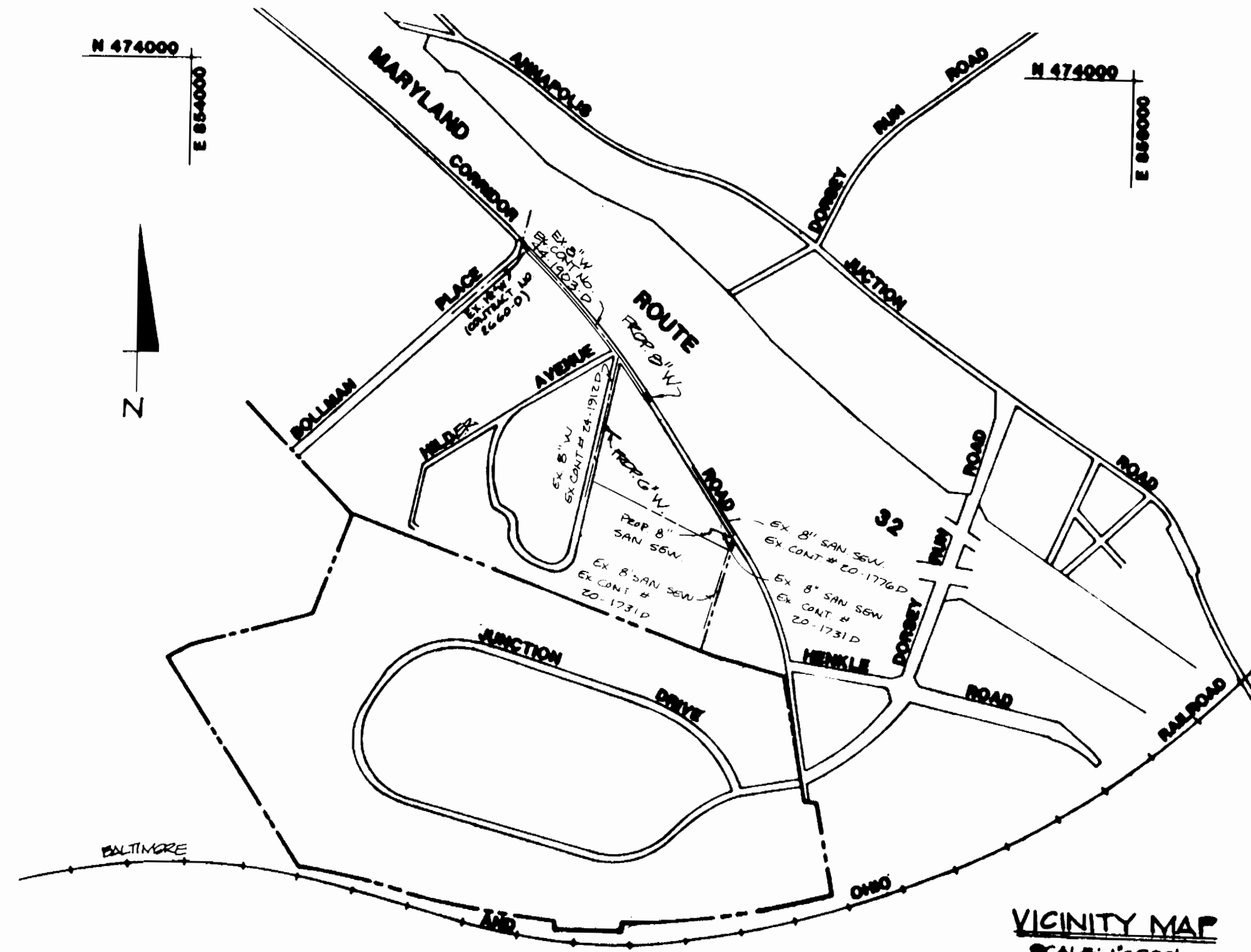


WATKINS MOTOR LINES, INC

HOWARD COUNTY, MARYLAND



VICINITY MAP
SCALE: 1"=600'

TYPE OF BUILDINGS	N/A
NUMBER OF LOTS	2
NUMBER OF WATER HOUSE CONNECTIONS	1
NUMBER OF SEWER HOUSE CONNECTIONS	1
DRAINAGE AREA	LITTLE PATENT
WATER CODE	202
SEWER CODE	202.0000
TEST GRADE	5.00
TREATMENT PLANT	LITTLE PATENT

CONTRACT NO. 24-3170-D

WATER & SEWER CONSTRUCTION PLANS

GENERAL NOTES

PART I

1. Approximate location of existing mains are shown. The contractor shall take all necessary precautions to protect existing mains and services and maintain uninterrupted supply. Any damage incurred shall be repaired immediately to the satisfaction of the Engineer at the Contractor's expense.
2. All horizontal controls are based on Maryland State Coordinates.
3. All vertical controls are based on U.S.G.S. data.
4. All pipe elevations shown are invert elevations.
5. Clear all utilities by a minimum of 6". Clear all poles by 2'-0" minimum or tunnel as required. The owner has contacted the utility companies and has made arrangements for bracing of poles as shown on the drawings. In the event the contractor's work requires the bracing of additional poles, any cost incurred by the owner for the bracing of additional poles or damages shall be deducted from money owed the contractor. The contractor shall coordinate with the utility companies to schedule the bracing of the poles.
6. For details not shown on the drawings, and for materials and construction methods, use Howard County Design Manual, Volume IV, Standard Specifications and Details for Construction. The contractor shall have a copy of Volume IV on the job.
7. Where test pits have been made on existing utilities, they are noted by the symbol at the location of the test pit. A note or notes containing the results of the test pit or pits is included on the drawings. Existing utilities in the vicinity of the proposed work for which test pits have not been dug shall be located by the contractor two weeks in advance of construction operations at his own expense.
8. Contractor shall notify the following utility companies or agencies at least five working days before starting work shown on these plans:
 - State Highway Administration - 531-5533
 - Baltimore Gas & Electric Co. - Contractor Services - 850-4620
 - Baltimore Gas & Electric Co. - Under Ground Damage Control - 787-7068
 - Baltimore Gas & Electric Co. - Trouble Shooting - 298-9001
 - Miss Utility - 1-800-557-7777
 - Colonial Pipeline Co. - 795-1390
 - Bureau of Utilities, Howard County Dept. of Public Works - 313-4900
9. Trees and shrubs are to be protected from damage to maximum extent. Trees and shrubs located within the construction strip are not to be removed or damaged by the contractor.
10. Contractor shall remove trees, stumps and roots along line of excavation. Payment for such removal shall be included in the unit price bid for construction of the main.

PART II - WATER

1. All water mains to be D.I.P. Class 52 unless otherwise noted.
2. Tops of all water mains to have a minimum of 3-1/2' cover unless otherwise noted.
3. Valves adjacent to tees shall be strapped to tees.
4. All fittings shall be buttressed or anchored with concrete in accordance with the Standard Details unless otherwise provided for on the drawings.
5. Fire hydrants shall be set to the busy line elevations shown on the drawings. All fire hydrants shall be restrained and buttressed with concrete in accordance with Standard Details. Soil around the fire hydrant shall be compacted in accordance with Section 100.000.000 OF THE STANDARD SPECIFICATIONS.
6. The contractor shall not operate any water main valves on the existing water system.
7. ALL WATER HOUSE CONNECTIONS SHALL BE FOR INSIDE METER SETTING UNLESS OTHERWISE NOTED ON PLANS OR IN SPECIFICATIONS.
8. ALL D.I.P. FITTINGS SHALL BE IN ACCORDANCE WITH ANWWA SPECIFICATIONS C-153. DUCTILE IRON JOINTED FITTINGS, 8-INCH THROUGH 12-INCH FOR WATER AND OTHER LIQUIDS.

PART III - SEWER

1. ALL SEWER MAINS SHALL BE 12" DIA. V.P. PIPE, COPR, ECP AND P.V.C. UNLESS OTHERWISE NOTED.
2. THE CONTRACTOR SHALL PROVIDE A JOINT IN ALL SEWER MAINS WITHIN 2'-0" OF EXTERIOR MANHOLE WALL.
3. ALL MANHOLES SHALL BE 4'-0" INSIDE DIAMETER UNLESS OTHERWISE NOTED.
4. FORCE MAINS SHALL BE D.I.P. ONLY.
5. MANHOLES SHOWN WITH 12" AND 16" WALLS ARE FOR BACK MANHOLES ONLY.
6. MANHOLES DESIGNATED W/T IN PLAN AND PROFILE SHALL HAVE W/T AT 4" TYP. FRAME AND 1'-0" OVERS. STANDARD DETAIL 25 BE USED WHERE W/T IS NOT SHOWN. MANHOLE FRAME AND COVER IS USED, SET 1" OF FRAME 1'-0" ABOVE FINISHED GROUND UNLESS OTHERWISE NOTED ON THE DRAWINGS.
7. HOUSES WITH THE SYMBOL "C.N.S." INDICATE THAT CELLAR CANNOT BE SERVED.

ITEM	QUANTITIES		MATERIAL/SUPPLIER
	ESTIMATED	AS BUILT	
8" WATER	50 LF		
8" VALVE	—		
8" X 8" TEE	1		
FIRE HYDRANT	2		
8" X 8" TAPPING SLEEVE VALVE	1		
6" X 8" TEE	1		
6" WATER	138 LF		
8" SEWER	10 LF		
6" VALVE	4		

SEDIMENT CONTROL MEASURE FOR THIS CONTRACT WILL BE IMPLEMENTED IN ACCORDANCE WITH SECTION 210 OF THE STANDARD SPECIFICATIONS FOR SOIL EROSION AND SEDIMENT CONTROL AND ALSO AS SHOWN ON THE GRADING AND SEDIMENT CONTROL PLAN SPD 01.125

REVIEWED FOR HOWARD SOIL CONSERVATION DISTRICT AND MEETS TECHNICAL REQUIREMENT

James M. DeLeon (S) 12/13/91
SIGNATURE DATE

THIS DEVELOPMENT PLAN IS APPROVED FOR SOIL EROSION AND SEDIMENT CONTROL BY THE HOWARD COUNTY CONSERVATION DISTRICT.

APPROVED *Jeffrey W. Shroy* 12/13/91
HOWARD SCD DATE

DEPARTMENT OF PUBLIC WORKS
HOWARD COUNTY, MARYLAND

James M. DeLeon 12-13-91
DIRECTOR OF PUBLIC WORKS DATE

William S. Ray 12-13-91
CHIEF, BUREAU OF ENGINEERING DATE

John M. Ingram 12/13/91
CHIEF, LAND DEVELOPMENT DIVISION DATE

PHR&A
PATTON, HARRIS, RUST & ASSOCIATES, PC
7609 STANDISH PLACE
ROCKVILLE, MARYLAND 20855
METRO: 301-762-2220 BALT.: 301-792-7244



DES:	
DRN:	
CHK:	
DATE:	
BY:	NO
REVISION:	
DATE:	

WATER & SEWER PLAN

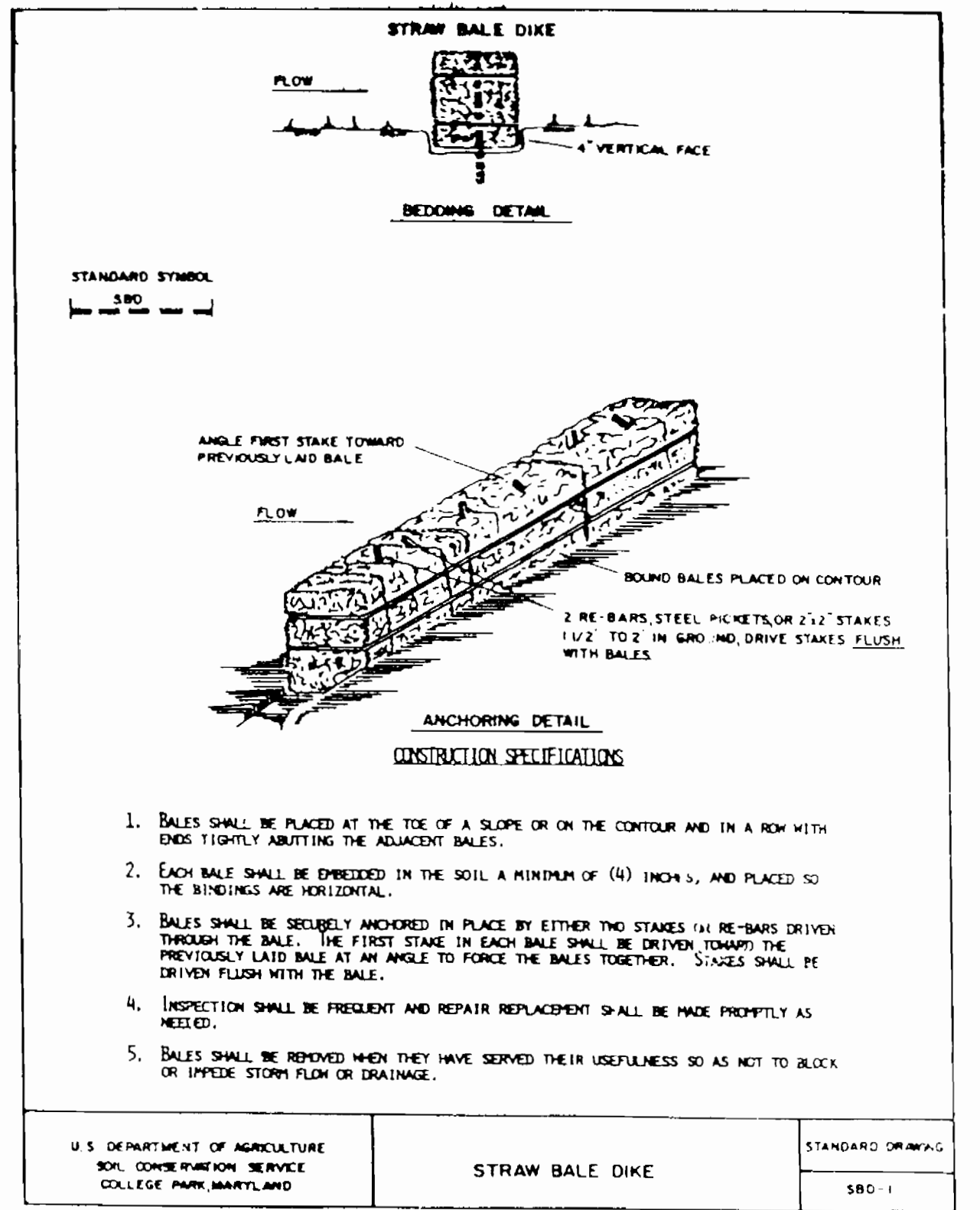
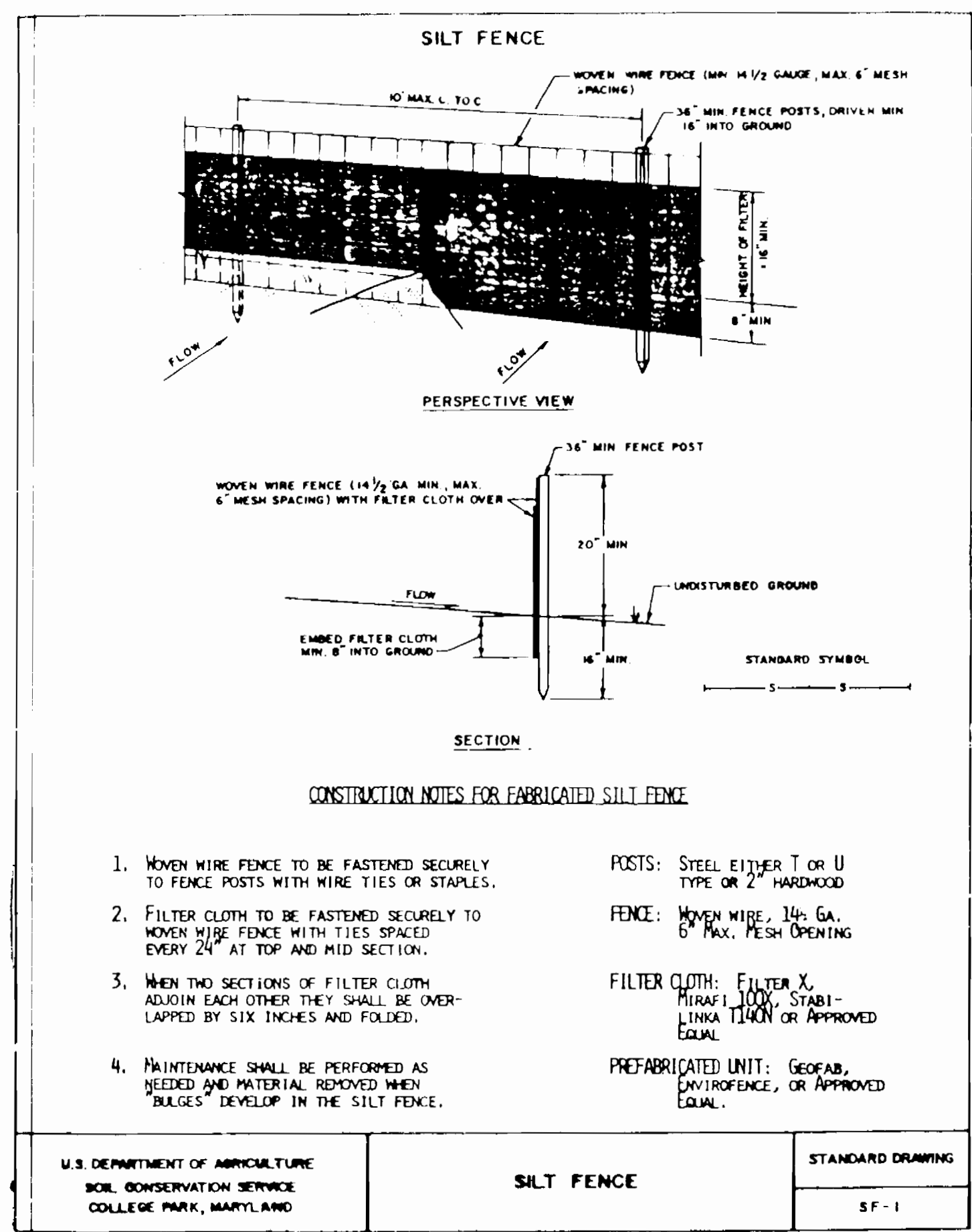
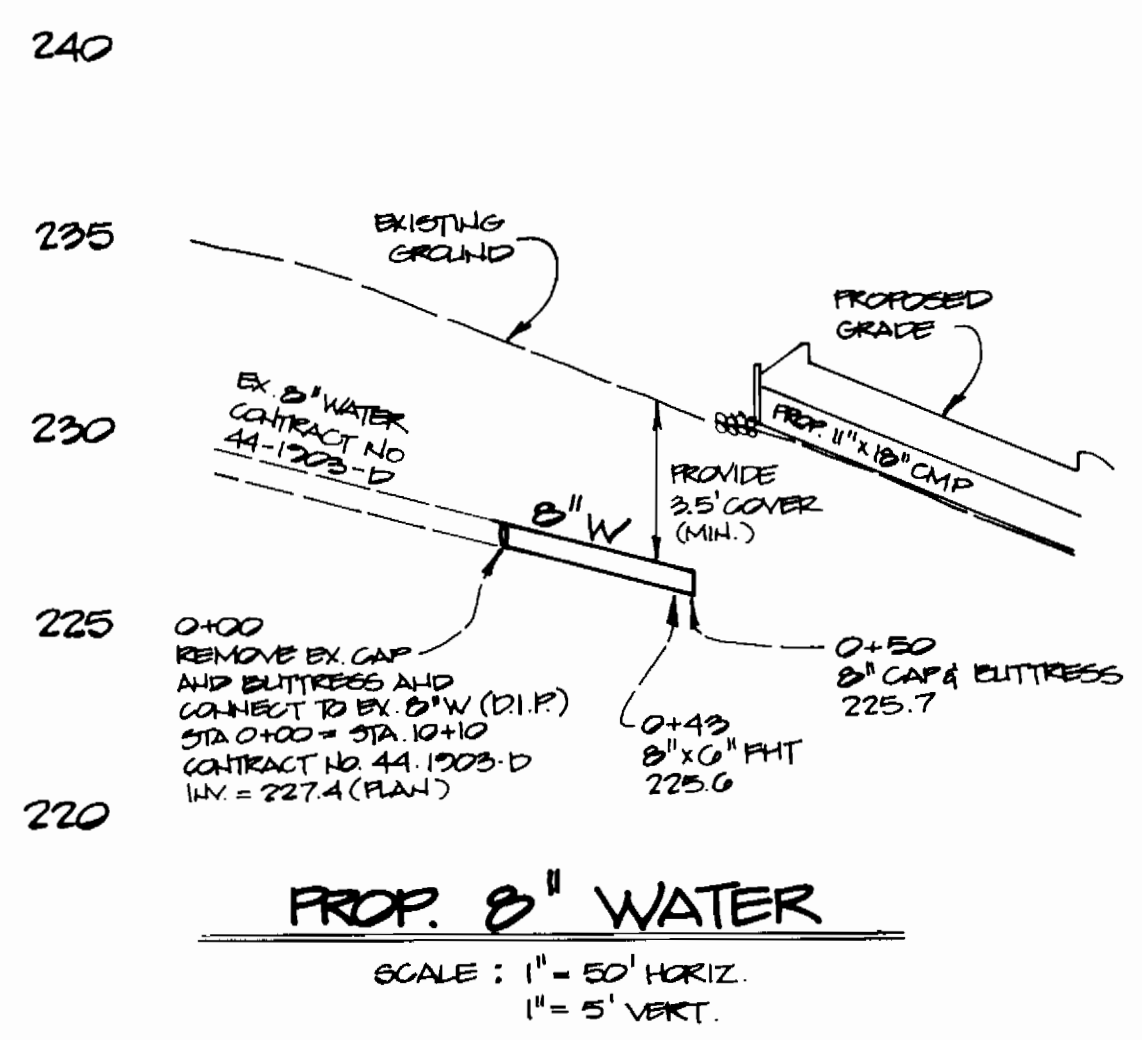
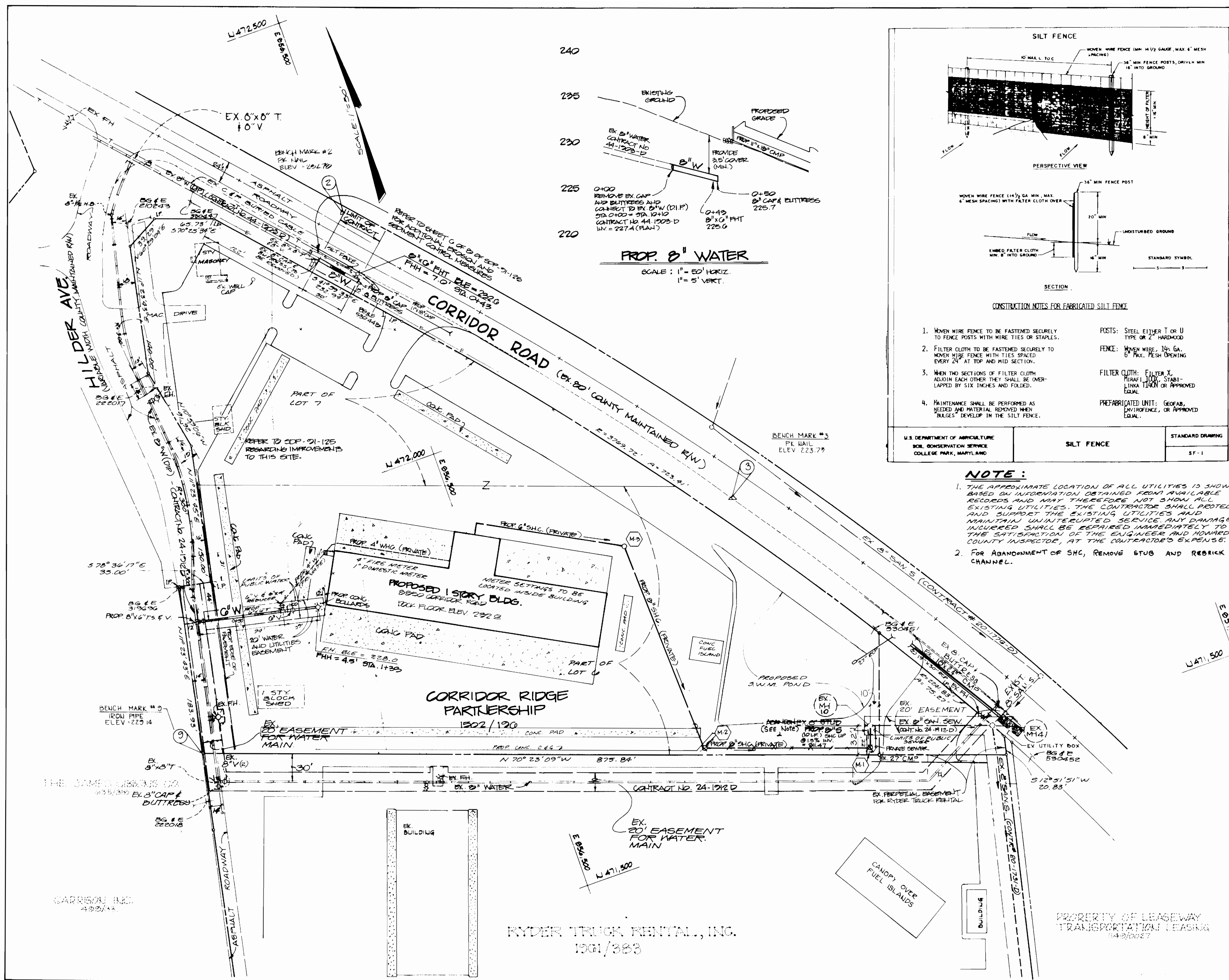
600' SCALE MAP NO. 40 BLOCK NO. 12

WATKINS MOTOR LINES, INC.
CONTRACT NO. 24-3170-D
SIXTH ELECTION DISTRICT
HOWARD COUNTY, MARYLAND
PART OF LOTS 6 AND 7 - J. DIUNKER SUBDIVISION

SCALE AS SHOWN

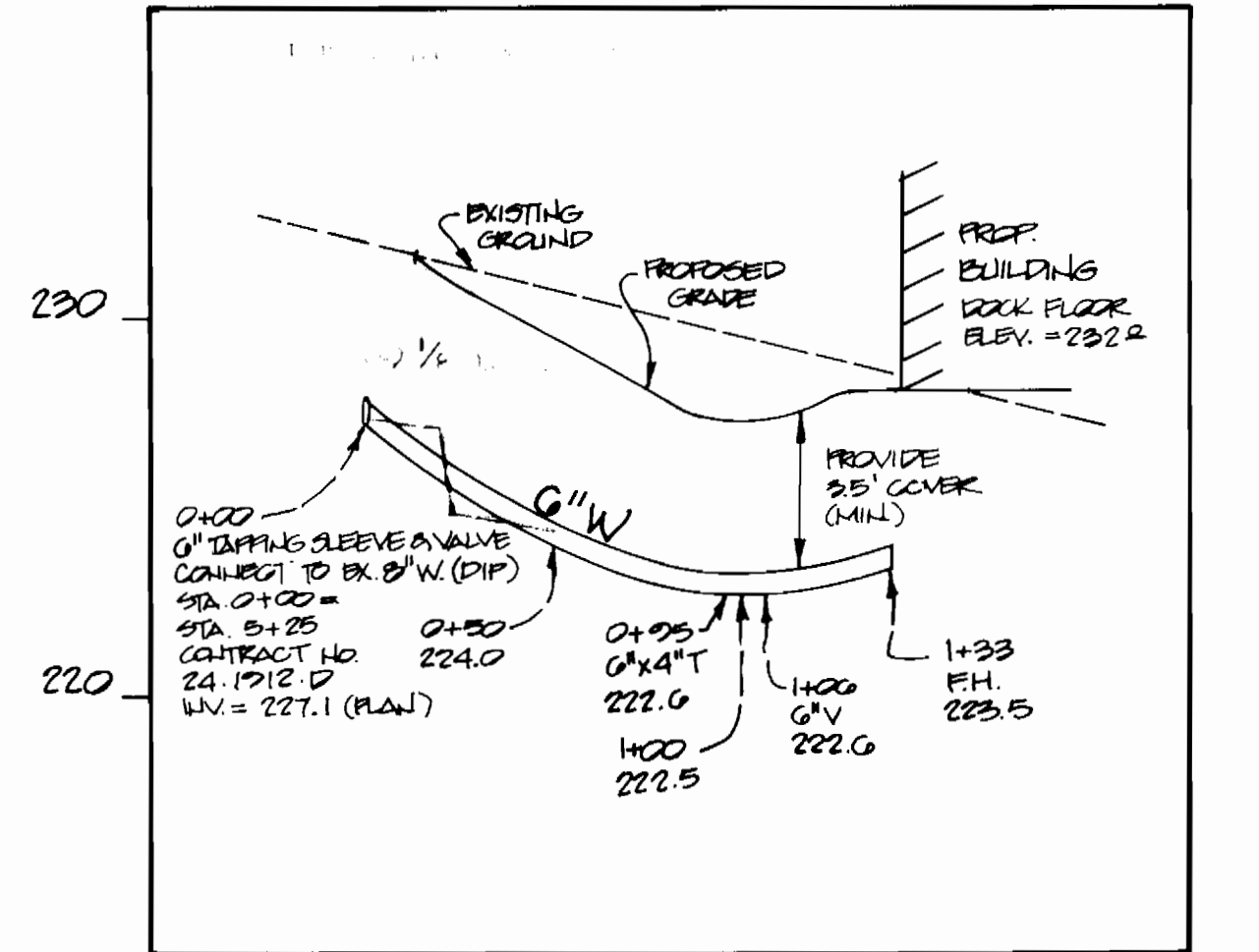
SHEET 1 OF 2

AS BUILT



NOTE:

- THE APPROXIMATE LOCATION OF ALL UTILITIES IS SHOWN BASED ON INFORMATION OBTAINED FROM AVAILABLE RECORDS AND ANY THE RECORDS NOT SHOWN ALL EXISTING UTILITIES. THE CONTRACTOR SHALL PROTECT AND SUPPORT THE EXISTING UTILITIES AND MAINTAIN UNINTERRUPTED SERVICE. ANY DAMAGE INCURRED SHALL BE REPAIRED IMMEDIATELY TO THE SATISFACTION OF THE ENGINEER AND HOWARD COUNTY INSPECTOR, AT THE CONTRACTOR'S EXPENSE.
- FOR ABANDONMENT OF SHC, REMOVE STUB AND REBRICK CHANNEL.



PROPOSED 6" WATER
SCALE: 1" = 50' HORIZ.
1" = 5' VERT.

LEGEND

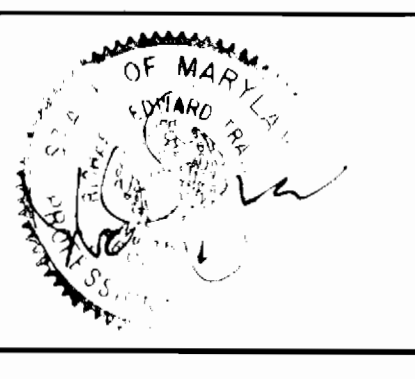
PROPOSED SEWER HOUSE CONNECTION	---
PROPOSED SEWER	---
PROPOSED WATER	---
EXISTING WATER	---
EXISTING UNDERGROUND TELEPHONE	---
FIRE HYDRANT/VALVE	
EASEMENT	---
EXISTING POLE/W/GUY WIRES	---
EDGE OF PAVEMENT	---
EDGE OF SHOULDER	---
PROPOSED WHC (PRIVATE)	---
IRON PIPE	IP

DEPARTMENT OF PUBLIC WORKS
HOWARD COUNTY, MARYLAND

Director of Public Works: [Signature] 12-13-91
Chief, Bureau of Engineering: [Signature] 12-13-91
Chief, Bureau of Utilities: [Signature] 12-13-91

Chief, Land Development Division: [Signature] 12-13-91

PHRA
PATTON, HARRIS, RUST & ASSOCIATES, P.C.
7609 STANDISH PLACE
ROCKVILLE, MARYLAND 20855
METRO: 301-752-2229 FAX: 301-752-7244



DES:	
DRN:	
CHK:	
DATE:	
BY NO.	
REVISION	

WATER & SEWER PLAN

600' SCALE MAP NO. 48 BLOCK NO. 13

WATKINS MOTOR LINES, INC.
CONTRACT NO. 24-3170-D
SIXTH ELECTION DISTRICT
HOWARD COUNTY, MARYLAND
PART OF LOTS G AND 7 - J. DIUNKER SUBDIVISION

SCALE AS SHOWN
SHEET 2 OF 2
12/13/91