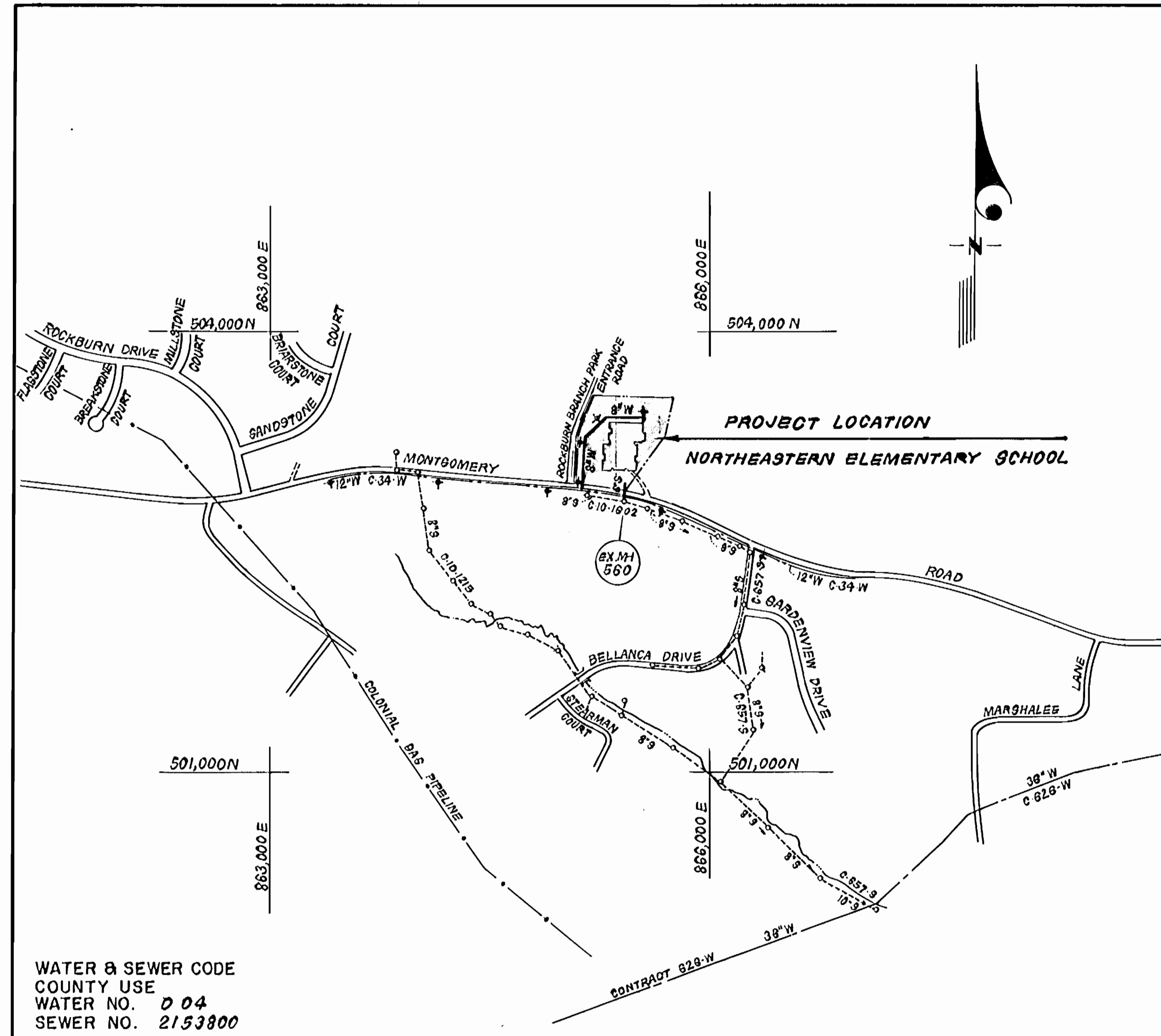


- NOTES:
1. Steel Casing Thickness shall be 1/2-inch, A.W.W.A. Steel C-200-75, Joints shall be welded.
 2. Annular space at each end of casing shall be sealed with 6-inches of cement grout.

SPECIAL DETAIL
JACKING OR BORING INSTALLATION
NO SCALE



VICINITY MAP
SCALE: 1" = 600'

CONTRACT NO.14-3161

NORTHEASTERN ELEMENTARY SCHOOL
PARCEL "A"
HOWARD COUNTY, MARYLAND
DEPARTMENT OF PUBLIC WORKS

Sediment Control Measures will be implemented in accordance with Section 219 of the Specifications & with Site Development Plan SDP-92-98 ; Drawing 7, 8 & 9 of 11 Sediment & Erosion Control.

REVIEWED FOR HOWARD SOIL CONSERVATION DISTRICT AND MEETS TECHNICAL REQUIREMENT

James P. ... 2/27/92
SIGNATURE DATE

U.S. SOIL CONSERVATION SERVICE

This Development Plan is approved for Soil Erosion and Sediment Control by the Howard Soil Conservation District.

APPROVED:

John ... 2/27/92
HOWARD S.C.D. DATE

DEPARTMENT OF PUBLIC WORKS
HOWARD COUNTY, MARYLAND

James P. ... 2-28-92
DIRECTOR OF PUBLIC WORKS DATE

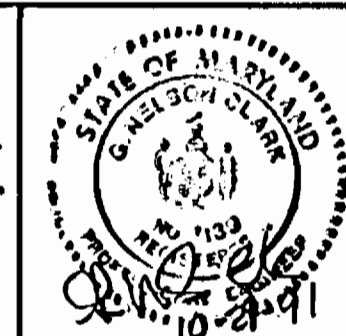
Robert ... 2-21-92
CHIEF, BUREAU OF UTILITIES DATE

... 2-28-92
CHIEF, BUREAU OF ENGINEERING DATE

... 2/21/92
CHIEF, LAND DEVELOPMENT DIV. DATE

CFE CLARK - FINEPROCK & SACKETT, INC.
ENGINEERS - PLANNERS - SURVEYORS

7135 MINSTREL WAY COLUMBIA MARYLAND 21045
(301) 381-7500 BALTO. (301) 821-9100 WASH.



DES: JTR	JTR	1	Rev. alignment and grade #3 & quantities	9-10-92
DRN: JTR				
CHK: CCM				
DATE: 007/91	BY	NO.	REVISION	DATE

TITLE SHEET

600'SCALE MAP NO. 37 BLOCK NO. 4

NORTHEASTERN ELEMENTARY SCHOOL
PARCEL "A"
1ST ELECTION DISTRICT
HOWARD COUNTY, MARYLAND
CONTRACT NO.14-3161

SCALE
AS SHOWN
SHEET
1 of 2

TYPE OF BUILDING	ELEMENTARY SCHOOL
NO. OF BUILDINGS	ONE
NO. OF WHC'S	ONE
NO. OF SHC'S	ONE
DRAINAGE AREA	PATAPSCO

TREATMENT PLANT PATAPSCO WASTEWATER TREATMENT PLANT

GENERAL NOTES

1. Approximate location of existing mains are shown. The contractor shall take all necessary precautions to protect existing mains and services and maintain uninterrupted supply. Any damage incurred shall be repaired immediately to the satisfaction of the Inspector, at the contractor's expense.
2. All horizontal controls are based on Maryland State Coordinates.
3. All vertical controls are based on U.S.G.S. Datum.
4. All pipe elevations shown are invert elevations.
5. Clear all utilities by a minimum of 6" clear all poles by 2'-0" minimum or tunnel as required. Any cost incurred to the contractor for tunneling or bracing at poles shall be included in unit prices bid for excavation and backfill.
6. For details not shown on the drawings use Howard County Standard Details.
7. For materials and construction methods use Howard County Standard Specifications and Howard County Design Manual, Volume IV, 1989 Amendments. The Contractor shall have Volume IV, 1989 Amendments, on the job site.
8. Contractor shall locate existing utilities a minimum of two (2) weeks in advance of construction operations in the vicinity of proposed utilities at his own expense.
9. Contractor shall notify the following utilities or agencies at least five (5) working days before starting work shown on these plans.
 - State Highway Administration - 531-5533
 - Baltimore Gas & Electric Company - Underground Damage Control - 797-9068
 - Baltimore Gas & Electric Company - Contractor Services - 850-4620
 - Baltimore Gas & Electric Company - Trouble Shooting - 298-9001
 - "Miss Utility" - 1-800-257-7777
 - Chesapeake & Potomac (C & P) Telephone Company - 1-800-257-7777
 - Bureau of Utilities Howard County - 313-4900
 - Colonial Pipeline Company - 795-1390
10. Trees are to be protected from damage to maximum extent. Trees located within the construction strip are not to be removed or damaged by the contractor.
11. Contractor shall remove trees, stumps, and roots along line of excavation as directed by the Inspector. Payment for such removal shall be included in the unit price bid for excavation and backfill.
12. Place regulation "Men Working" and warning signs as required to comply with Maryland State Highway Administration Manual of Traffic Control for Highway Construction and Maintenance Operations.
13. All water mains to be D.I.R. Class 52 unless otherwise noted.
14. Top of all water mains to have a minimum of 3'-1/2' cover unless otherwise noted.
15. Valves adjacent to tees shall be strapped to tees.
16. Block all fittings with concrete.
17. Bury line elevations on fire hydrants shall be set to the elevations shown on the drawings. All fire hydrants shall be strapped and buttressed with concrete in accordance with standard details. Soil around the fire hydrant to be compacted in accordance with Sections 1000 & 1008 of the Standard Specifications.
18. All water house connections shall be for an inside meter setting.
19. The contractor shall not operate any water main valves on the existing system.
20. All 6" Sewer Pipe shall be Ductile Iron Class 52.
21. The contractor shall provide a joint in all sewer mains within 2'-0" of exterior manhole wall.
22. All manholes shall be 4'-0" inside diameter, unless otherwise noted.
23. Water main and water house connection lines must have a minimum of one foot separation from the sanitary sewer and sewer house connections as they cross. Except at crossings, water and sewer lines shall have a minimum horizontal separation of 10'.
24. Manholes designated thus: WT, shall have a Watertight Frame and Cover.

QUANTITIES			
ITEM	EST'D	AS BUILT	MATERIAL / SUPPLIER
8"W	800 L.F.	800 L.F.	GRIFFIN PIPE PRODUCTS CO.
6"W	10 L.F.	10 L.F.	GRIFFIN PIPE PRODUCTS CO.
6"Ø	74 L.F.	74 L.F.	GRIFFIN PIPE PRODUCTS CO.
F.H.	4 EA	4 EA.	MULLER / WATER PRO
8"V. (Excl. F.H.)	1 EA	1 EA.	MULLER / WATER PRO
12"x8" T.Ø. & V.	1 EA	1 EA.	MULLER / WATER PRO
3"Ø. CASING PIPE	48 L.F.	50 L.F.	PITTSBURGH PIPE / C.C. & T. CONSTRUCTION CO. INC.

AS-BUILT 11-24-02

CFE 91-113

