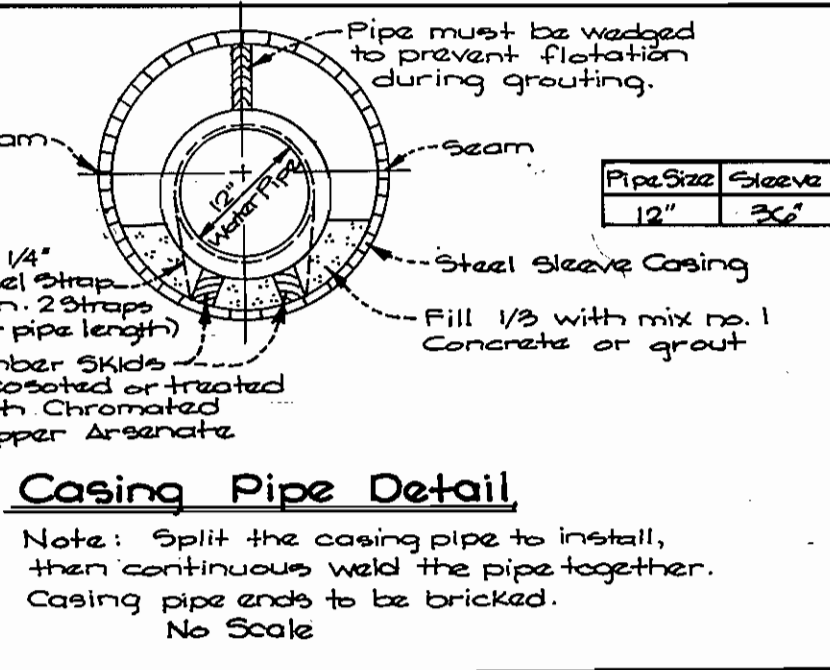


Note: The proposed 10' W is not part of this contract 24-3152-D. The water main will be constructed as a Private Main and be Maintained as a Private Main.



3"x 1/4" steel strips (min. 2 strips per pipe length) Timber Skids Cranked or treated with Chromated Copper Arsenate

Fill 1/2 with mix no. 1 Concrete or grout

Limit of Ex. Water Mains to be removed Cap & Buttress

Limit of Ex. Pavement to be removed

Limit of Ex. Pavement to be removed

Limit of Ex. Pavement to be removed

Limit of Ex. Pavement to be removed

Limit of Ex. Pavement to be removed

Limit of Ex. Pavement to be removed

Limit of Ex. Pavement to be removed

Limit of Ex. Pavement to be removed

Limit of Ex. Pavement to be removed

Limit of Ex. Pavement to be removed

Limit of Ex. Pavement to be removed

Limit of Ex. Pavement to be removed

Limit of Ex. Pavement to be removed

Limit of Ex. Pavement to be removed

Limit of Ex. Pavement to be removed

Limit of Ex. Pavement to be removed

Limit of Ex. Pavement to be removed

Limit of Ex. Pavement to be removed

DEPARTMENT OF PUBLIC WORKS  
 HOWARD COUNTY, MARYLAND  
 Director of Public Works: [Signature] 2/24/92  
 Chief, Bureau of Engineering: [Signature] 2/23/92  
 Chief, Bureau of Utilities: [Signature] 2/24/92  
 Chief, Land Development Div.: [Signature] 2/24/92

GUTSCHICK LITTLE & WEBER, P.A.  
 ENGINEERS, PLANNERS, SURVEYORS  
 3909 NATIONAL DRIVE, SUITE 250 - BURTONVILLE OFFICE PARK  
 BURTONVILLE, MD. 20886  
 (301) 421-4024



DES: GAH	GAH	Rev. per county comments prior to incorporation Show of Meter Vault & Conn. to Ex. W. as 'Future by others'	2/24/92
DRN: GAH	GAH	Insert profile of G.W. at top center. Reorganization of G.W. to parcel A-12 & provide Cap & Buttress of WM. Sta. 0+00	2/24/92
CHK: CKG	GAH	Rev. location of FH from Sta. 4+25 to 15' R. to 4+25.25 R. Rev. location of 12" x 12" Tee from Sta. 10+00 to 10+00.21 R.	2/24/92
DATE: Feb 1992	GAH	Add MH 302A & revise B'S to Parcel A-13 from MH 300 to MH 302A. Adjust location of Electric Line	2/24/92
BY NO.	GAH	Add Utilities / Change Alignment B'S @ MH 305	2/19/92
REVISION			

Water & Sewer Construction Plan  
 Scale: 1"=50'  
 600' SCALE MAP NO. 47 BLOCK NO. 5, 6, 11 & 12

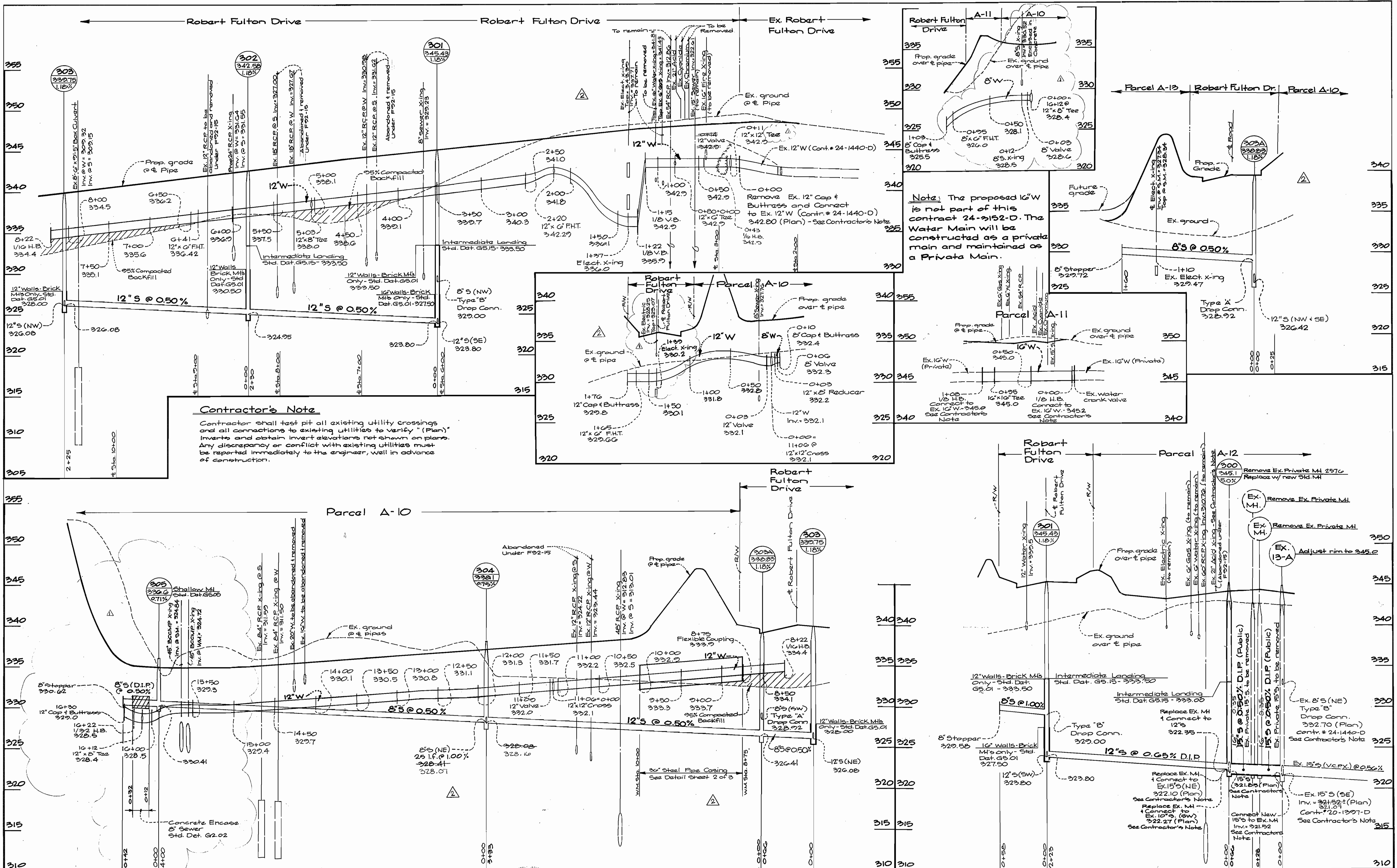
Gateway Commerce Center  
 Parcels A-10 thru A-13  
 (A resubdivision of Columbia Gateway Parcel N-1 and Appliance Park East Parcels A-3 and A-9)  
 Sixth Election District Howard County, Maryland  
 Contract No: 24-3152-D  
 SHEET 2 OF 3

**Contractor's Note:**  
 Contractor shall test pit all existing utility crossings and all connections to existing utilities to verify plan inverts and obtain inverts not shown on plans. Any discrepancy or conflict with existing utilities must be reported immediately to the engineer, well in advance of construction.

**Bench Marks**  
 B.M. #5: marked on wall of tunnel at angle point N.E. corner Elev. = 333.20  
 B.M. #6: railroad spike set in pole # 12 Elev. = 332.80

AS-BUILT 2-15-92



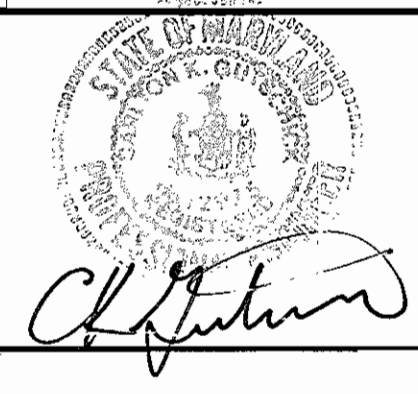


**Contractor's Note**  
 Contractor shall test pit all existing utility crossings and all connections to existing utilities to verify "Plan" inverts and obtain invert elevations not shown on plans. Any discrepancy or conflict with existing utilities must be reported immediately to the engineer, well in advance of construction.

**Note:** The proposed 16" W is not part of this contract 24-3152-D. The Water Main will be constructed as a private main and maintained as a Private Main.

DEPARTMENT OF PUBLIC WORKS  
 HOWARD COUNTY, MARYLAND  
 Director of Public Works: *Robert Berman* 2-24-92  
 Chief, Bureau of Utilities: *Robert Berman* 2-24-92  
 Chief, Bureau of Engineering: *William J. Kelly* 2-28-92  
 Chief, Land Development Div.: *William J. Kelly* 2-28-92

**G&W GUTSCHICK LITTLE & WEBER, P.A.**  
 ENGINEERS, PLANNERS, SURVEYORS  
 3909 NATIONAL DRIVE - SUITE 250 - BURTONSVILLE OFFICE PARK  
 BURTONSVILLE, MD. 20866  
 301-491-4024



DES: G.A.H.	
DRN: G.A.H.	
CHK: C.K.G.	
DATE: Feb 1992	
BY: [Signature]	
NO. [ ]	
REVISION [ ]	
DATE: 7/9/92	

**Water & Sewer Profiles**  
 Scale: 1" = 50' Horiz.  
 1" = 5' Vert.  
 600' SCALE MAP NO. 47 BLOCK NO. 5,6,11,12

**Gateway Commerce Center**  
 Parcels A-10 thru A-13  
 (A subdivision of Columbia Gateway Parcel N-1 and Appliance Park East - Parcels A-3 and A-9)  
 Sixth Election District Howard County, Maryland  
 Contract No: 24-3152-D  
 SHEET 3 OF 3  
 AS-BUILT 2-15-93