

GENERAL NOTES

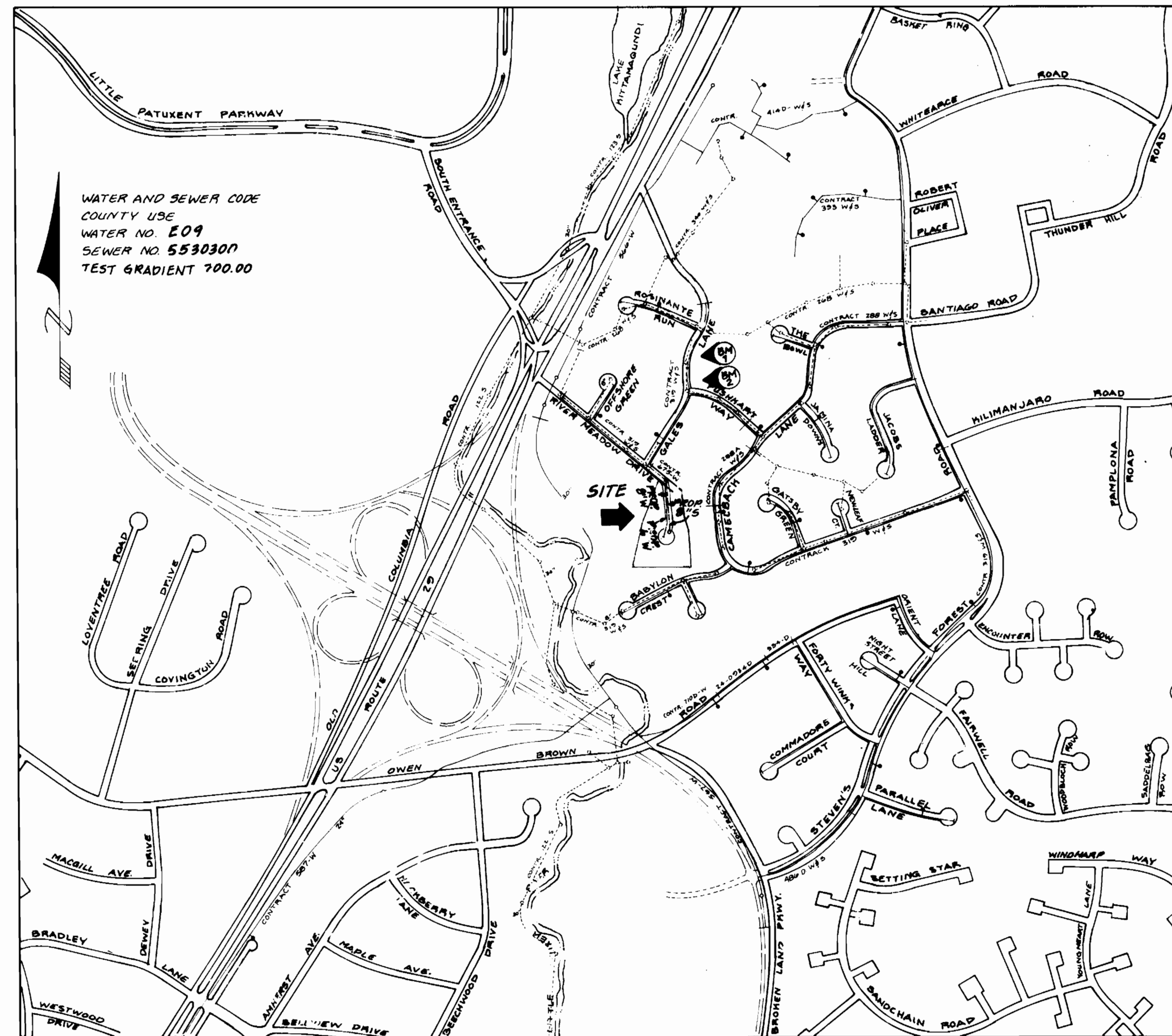
1. Approximate location of existing mains are shown. The contractor shall take all necessary precautions to protect existing mains and services and maintain uninterrupted supply. Any damage incurred shall be repaired immediately to the satisfaction of the Inspector, at the contractor's expense.
2. All horizontal controls are based on Maryland State Coordinates.
3. All vertical controls are based on U.S.G.S. Data.
4. All pipe elevations shown are invert elevations.
5. Clear all utilities by a minimum of 6" clear all poles by 2'-0" minimum or tunnel as required. Any cost incurred to the contractor for tunneling or bracing at poles shall be included in unit prices bid for excavation and backfill.
6. For details not shown on the drawings use Howard County Standard Details.
7. For materials and construction methods use Howard County Standard Specifications and Howard County Design Manual, Volume IV, 1989 Amendments. The Contractor shall have Volume IV, 1989 Amendments on the job site.
8. Contractor shall locate existing utilities a minimum of two (2) weeks in advance of construction operations in the vicinity of proposed utilities at his own expense.
9. Contractor shall notify the following utilities or agencies at least five (5) working days before starting work shown on these plans.

State Highway Administration - 531-5533
 Baltimore Gas & Electric Company - Underground Damage Control - 787-9068
 Baltimore Gas & Electric Company - Contractor Services - 850-4620
 Baltimore Gas & Electric Company - Trouble Shooting - 298-9001
 "Miss Utility" - 1-800-257-7777
 Chesapeake & Potomac (C&P) Telephone Company - 1-800-257-7777
 Bureau of Utilities Howard County - 315-4900
 Colonial Pipeline Company - 795-1590

10. Trees are to be protected from damage to maximum extent. Trees located within the construction strip are not to be removed or damaged by the contractor.
11. Contractor shall remove trees, stumps, and roots along line of excavation as directed by the Inspector. Payment for such removal shall be included in the unit price bid for excavation and backfill.
12. Place regulation "Men Working" and warning signs as required to comply with Maryland State Highway Administration Manual of Traffic Control for Highway Construction and Maintenance Operations.
13. All water mains to be D.I.P. Class 52 unless otherwise noted.
14. Top of all water mains to have a minimum of 3'-1/2' cover unless otherwise noted.
15. Valves adjacent to trees shall be strapped to trees.
16. All fittings shall be buttressed or anchored with concrete in accordance with the Standard Details unless otherwise provided for on the drawings.
17. Bury line elevations on fire hydrants shall be set to the elevations shown on the drawings. All fire hydrants shall be strapped and buttressed with concrete in accordance with standard details. Soil around the fire hydrant to be compacted in accordance with Sections 1000 & 1005 of the Standard Specifications.
18. All water house connections shall be for an inside meter setting.
19. The contractor shall not operate any water main valves on the existing system.
20. All sewer mains shall be C.S.P.X., V.C.P.X., or P.V.C. unless otherwise noted.
21. The contractor shall provide a joint in all sewer mains within 2'-0" of exterior manhole wall.
22. All manholes shall be 4'-0" inside diameter, unless otherwise noted.
23. Water main and water house connection lines must have a minimum of one foot separation from the sanitary sewer and sewer house connections as they cross. Except at crossings, water and sewer lines shall have a minimum horizontal separation of 10'.
24. Manholes designated with WT, shall have a Watertight Frame and Cover.
25. All D.I.P. fittings shall be in accordance with A.W.W.A. specification C-153 Ductile Iron Compact Fittings, 3-inch through 12-inch for water and other liquids.
26. All sewer house connections shall be 4" dia.
27. Manholes shown with 12" and 16" walls are for brick manholes only.

SEWER HOUSE CONNECTION TABLE

LOT #	MIN. C.	INV. @ P.L.
1	350.50	345.70
2	350.00	344.90
3	344.00	339.20
4	338.00	331.69
5	338.00	333.46
6	338.00	333.20
7	344.00	338.90
8	348.00	342.20
9	347.50	343.00
10	350.00	345.70
11	350.00	345.70



TYPE OF BUILDING Single Family Detached
 NO OF LOTS 11
 NO OF WHC 11
 NO OF SHC 11
 DRAINAGE AREA Little Patuxent
 TREATMENT PLANT Little Patuxent
 Water Quality Management
 Center, Savage, Howard County

VICINITY MAP

SCALE: 1" = 400'

BENCHMARKS

- ① # 3688 P.K. @ M.H. RIM; N500369.772, E 841483.543; ELEV. 329.21
- ② # 3689 P.K. @ M.H. RIM; N500181.247, E 841524.448; ELEV. 322.83

QUANTITIES

ITEM	EST'D	AS BUILT	MATERIAL / SUPPLIER
8" W	218 L.F.		
6" W	177 L.F.		
FIRE HYDRANT	1		
8" D.I.P. C152	530 L.F.		
8" X 6" FHT	1		
8" X 6" R	1		
6" CAP	1		
6" V (exc. FH)	1		
3/4" WHC	310 L.F.		
4" SHC	166 L.F.		
4'0" DIA. MH	1/29.5 Feet		
4'0" DROP MH	2/38 Feet		
4" DHC	206 L.F.		

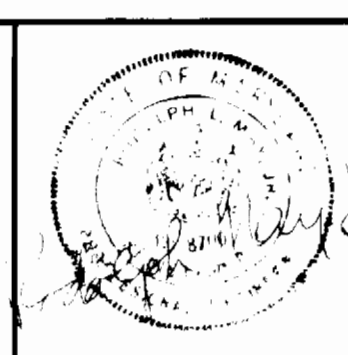
REVIEWED FOR HOWARD SOIL CONSERVATION DISTRICT AND MEETS TECHNICAL REQUIREMENTS. F-92-17
 12/11/91
 SIGNATURE DATE
 U.S. SOIL CONSERVATION SERVICE

THIS DEVELOPMENT PLAN IS APPROVED FOR SOIL EROSION AND SEDIMENT CONTROL BY THE HOWARD COUNTY SOIL CONSERVATION DISTRICT.
 12/11/91
 SIGNATURE DATE
 HOWARD S.C.D.

SEDIMENT CONTROL MEASURES FOR THIS CONTRACT WILL BE IMPLEMENTED IN ACCORDANCE WITH SECTION 219 OF THE STANDARD SPECIFICATIONS & FINAL RD. CONSTRUCTION PLANS, F-92-17.

DEPARTMENT OF PUBLIC WORKS
 HOWARD COUNTY, MARYLAND
 12-3-91 DATE
 DIRECTOR OF PUBLIC WORKS
 12-4-91 DATE
 CHIEF, BUREAU OF UTILITIES

LAND DESIGN ENGINEERING, INC.
 10620 GUILFORD ROAD
 SUITE 210
 JESSUP, MARYLAND 20794
 (301) 604-6264
 (410) 880-0084



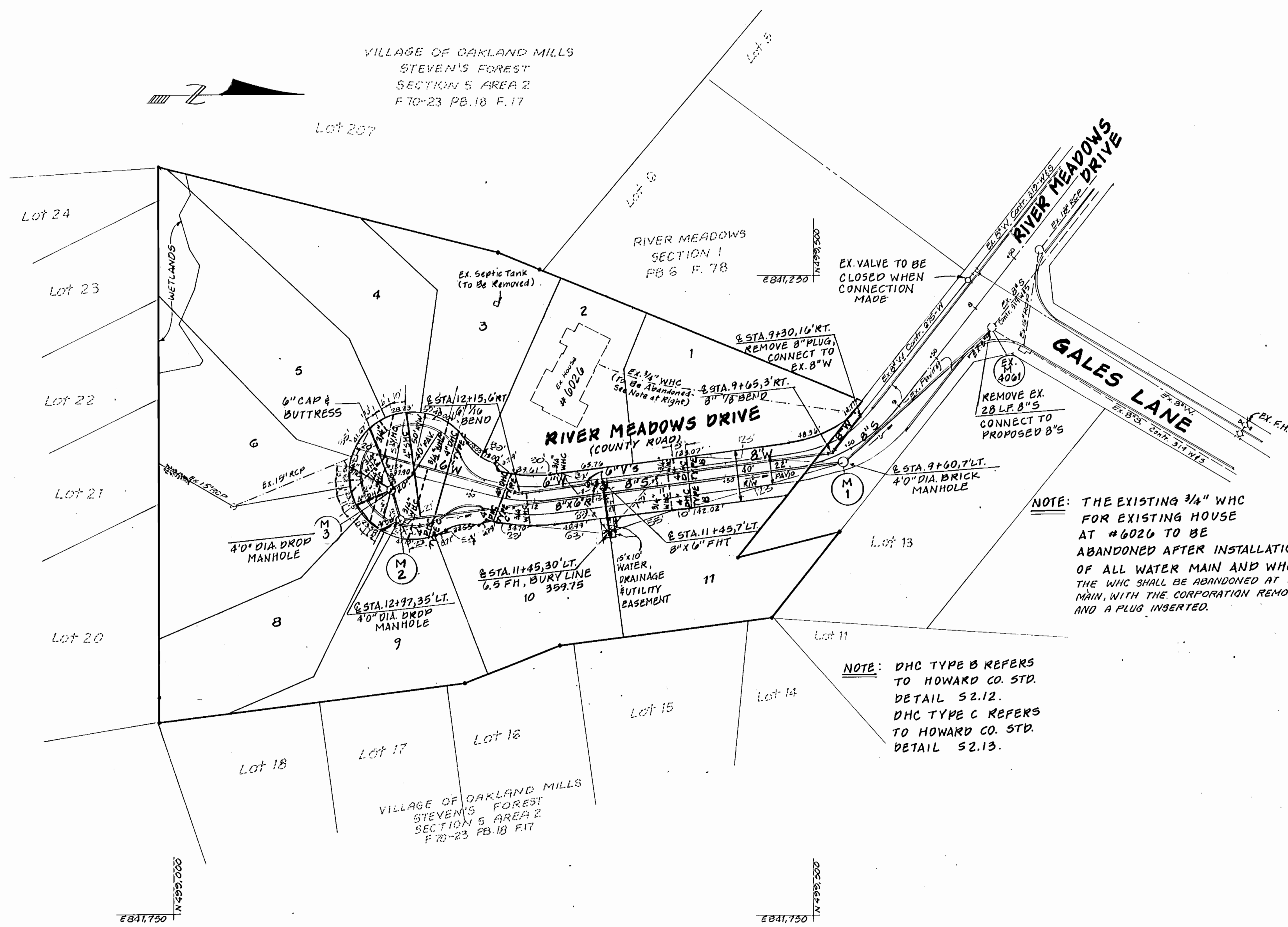
DES.	LM				
DRN.	WJ/LM				
CHK.	MD				
DATE:	9-91				
BY	NO.	REVISION	DATE		

TITLE SHEET

600 SCALE MAP NO. 36 BLOCK NO. 8

WATER & SEWER EXTENSION
 MEADOWS COURT, LOTS 1-11
 CONTRACT NO. 24-3149-D
 6TH ELECTION DISTRICT

SCALE AS SHOWN
 SHEET 1 OF 3



NOTE: THE EXISTING 3/4" WHC FOR EXISTING HOUSE AT #6026 TO BE ABANDONED AFTER INSTALLATION OF ALL WATER MAIN AND WHC'S. THE WHC SHALL BE ABANDONED AT THE MAIN, WITH THE CORPORATION REMOVED AND A PLUG INSERTED.

NOTE: DHC TYPE B REFERS TO HOWARD CO. STD. DETAIL S2.12. DHC TYPE C REFERS TO HOWARD CO. STD. DETAIL S2.13.

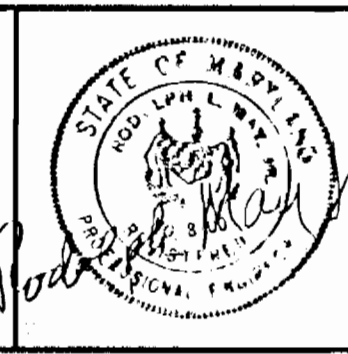
REVIEWED FOR HOWARD SOIL CONSERVATION DISTRICT AND MEETS TECHNICAL REQUIREMENTS. F-92-17
 Signature: *James M. Helm*
 U.S. SOIL CONSERVATION SERVICE
 DATE: 12/11/91

THIS DEVELOPMENT PLAN IS APPROVED FOR SOIL EROSION AND SEDIMENT CONTROL BY THE HOWARD COUNTY SOIL CONSERVATION DISTRICT.
 Signature: *John F. Roberts*
 HOWARD S.C.D.
 DATE: 12/11/91

SEDIMENT CONTROL MEASURES FOR THIS CONTRACT WILL BE IMPLEMENTED IN ACCORDANCE WITH SECTION 219 OF THE STANDARD SPECIFICATIONS & FINAL ROAD CONSTRUCTION PLANS, F-92-17.

DEPARTMENT OF PUBLIC WORKS
 HOWARD COUNTY, MARYLAND
 Signature: *Robert M. Bunker*
 CHIEF - BUREAU OF UTILITIES
 DATE: 12-4-91

LAND DESIGN ENGINEERING, INC.
 10620 GUILFORD ROAD
 SUITE 210
 JESSUP, MARYLAND 20794
 (301) 604-6264
 (410) 880-0034



DES:	LM				
ORN:	WJ/LM				
CHK:	MD				
DATE:	9-91	BY NO.		REVISION	DATE

PLAN
 600 SCALE MAP NO. 36 BLOCK NO. 8

WATER & SEWER EXTENSION
 MEADOWS COURT, LOTS 1-11
 CONTRACT NO. 24-3149-D
 6TH ELECTION DISTRICT

SCALE
 1" = 50'
 SHEET
 2 OF 3

