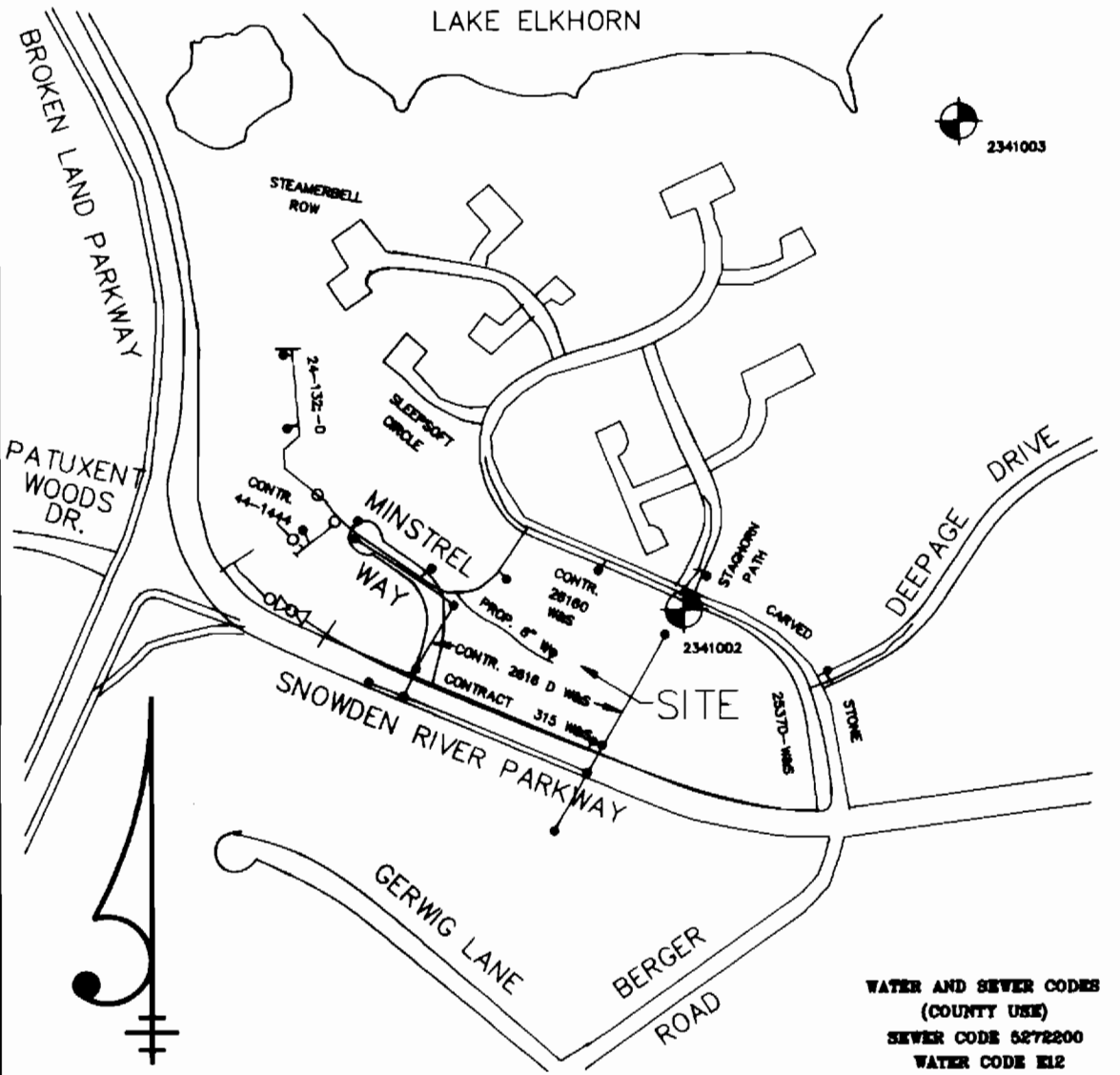
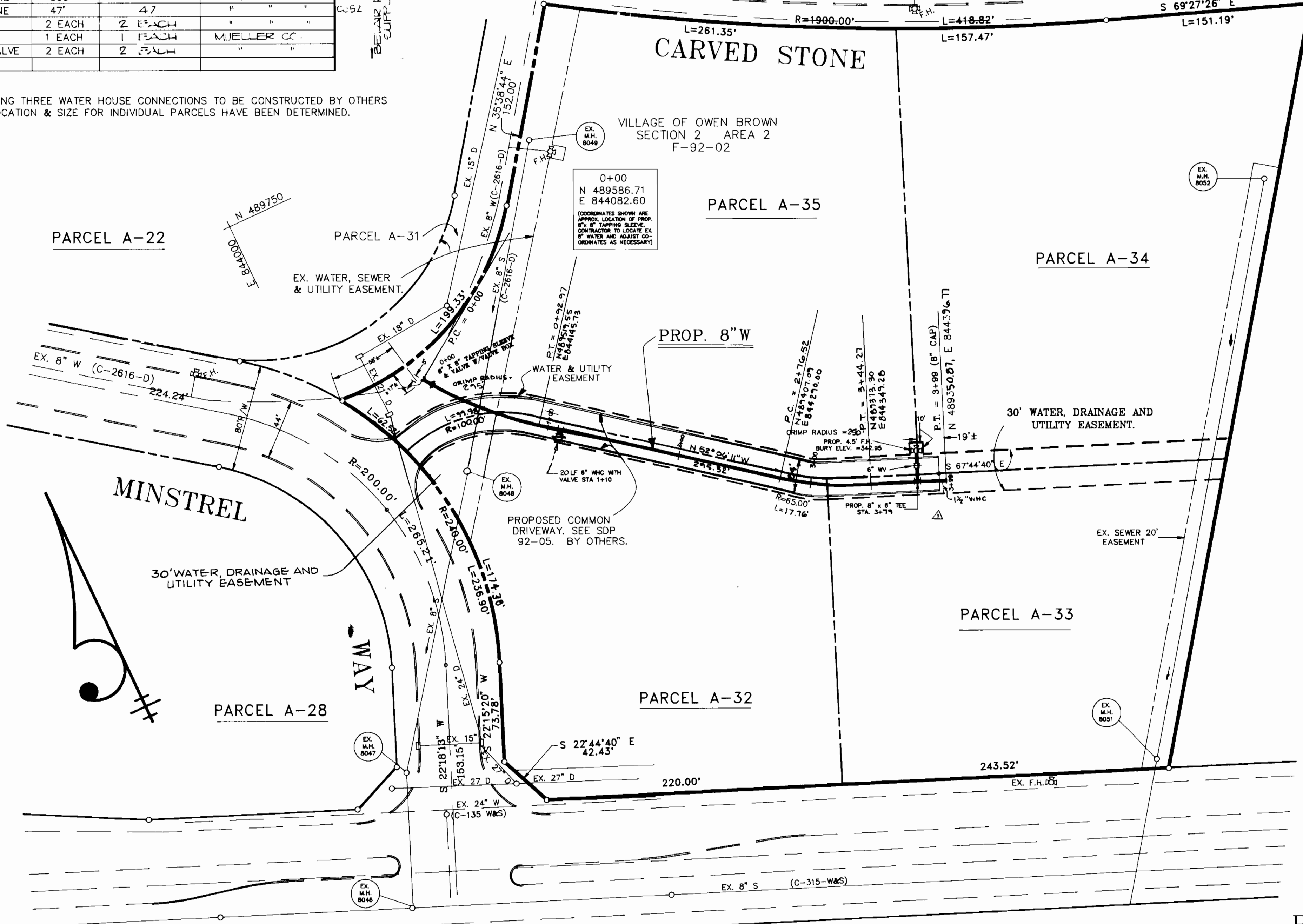


GENERAL NOTES

- APPROXIMATE LOCATION OF EXISTING MAINS ARE SHOWN. THE CONTRACTOR SHALL TAKE ALL NECESSARY PRECAUTIONS TO PROTECT EXISTING MAINS AND SERVICES AND MAINTAIN UNINTERRUPTED SUPPLY. ANY DAMAGE INCURRED SHALL BE REPAIRED IMMEDIATELY TO THE SATISFACTION OF THE ENGINEER. AT THE CONTRACTOR'S EXPENSE EXISTING 8" WATER IS TO BE RELOCATED BY THIS PLAN. SEE PAR. 20 OF THESE SPECIFICATIONS. LOCATION OF TAPPING SLEEVES AND CHOP BLOCKS FOR PROPOSED 8" WATER MAY REQUIRE MINOR ADJUSTMENT.
- ALL HORIZONTAL CONTROLS ARE BASED ON MARYLAND STATE COORDINATES.
- ALL VERTICAL CONTROLS ARE BASED ON U.S.S. DATUM.
- ALL PIPE ELEVATIONS ARE INVERT ELEVATIONS.
- CLEAR ALL UTILITIES BY A MINIMUM OF 8". CLEAR ALL POLES BY 2'-0" MINIMUM OR TUNNEL AS REQUIRED. ANY COST INCURRED TO THE CONTRACTOR FOR TUNNELING OR BRACING AT POLES SHALL BE INCLUDED IN THE UNIT PRICES BID FOR CONSTRUCTION OF THE MAIN.
- FOR DETAILS NOT SHOWN ON THE DRAWINGS AND FOR MATERIALS AND CONSTRUCTION METHODS, USE HOWARD COUNTY DESIGN MANUAL VOLUME IV, "STANDARD SPECIFICATIONS AND DETAILS FOR CONSTRUCTION." THE CONTRACTOR SHALL HAVE A COPY OF VOLUME IV ON THE JOB.
- EXISTING UTILITIES IN THE VICINITY OF THE PROPOSED WORK FOR WHICH TEST PITS HAVE NOT BEEN DUG SHALL BE LOCATED BY THE CONTRACTOR TWO WEEKS IN ADVANCE OF CONSTRUCTION OPERATIONS AT HIS OWN EXPENSE.
- CONTRACTOR SHALL NOTIFY THE FOLLOWING UTILITIES OR AGENCIES AT LEAST FIVE WORKING DAYS BEFORE STARTING WORK SHOWN ON THESE PLANS.
 - STATE HIGHWAY ADMINISTRATION 631-6633
 - BALTIMORE GAS AND ELECTRIC COMPANY-CONTRACTOR SERVICES 681-2686
 - UNDERGROUND DAMAGE CONTROL 284-5825
 - UNDERGROUND UTILITY SERVICE 286-1013
 - MES UTILITY 1-669-0100
 - COLONIAL PIPELINE CO. 796-1890
 - BUREAU OF UTILITIES, HOWARD COUNTY DEPT. OF PUBLIC WORKS 513-4800
- TREES AND SHRUBS ARE TO BE PROTECTED FROM DAMAGE TO THE MAXIMUM EXTENT. TREES AND SHRUBS LOCATED WITHIN THE CONSTRUCTION STRIPS ARE NOT TO BE REMOVED OR DAMAGED BY THE CONTRACTOR.
- CONTRACTOR SHALL REMOVE TREE STUMPS AND ROOTS ALONG THE LINE OF EXCAVATION.
- PLACE REGULATION "MEN WORKING" AND WARNING SIGNS AS REQUIRED TO COMPLY WITH MARYLAND STATE HIGHWAY ADMINISTRATION "MANUAL OF TRAFFIC CONTROL FOR HIGHWAY CONSTRUCTION AND MAINTENANCE OPERATIONS."
- ALL WATER MAINS TO BE D.I.P. UNLESS OTHERWISE NOTED.
- TOP OF ALL WATER MAINS TO HAVE A MINIMUM OF 3'-6" COVER UNLESS OTHERWISE NOTED.
- VALVES ADJACENT TO TRES SHALL BE STRAPPED TO TRES.
- BLOCK ALL FITTINGS WITH CONCRETE.
- ALL WATER HOUSE CONNECTIONS (WHC) SHALL BE FOR INSIDE MAYER SETTING.
- THE CONTRACTOR SHALL NOT OPERATE ANY WATER MAIN VALVES ON THE EXISTING SYSTEM.
- ALL SEWER MAINS SHALL BE C.S.P.X., R.C.S.P., V.C.P.X. OR PVC UNLESS OTHERWISE NOTED.
- THE CONTRACTOR SHALL PROVIDE A JOINT IN ALL SEWER MAINS WITHIN 8' OF AN EXTERIOR MANHOLE WALL.
- ALL MANHOLES MUST BE 4'-0" IN DIAMETER UNLESS OTHERWISE NOTED.
- DISTURBED AREA IS LESS THAN 6,000 SQUARE FEET.

ITEM	ESTIMATE	AS-BUILT	MATERIAL/SUPPLIER
8"X8" TAPPING SL	1 EACH	1 EACH	GRIFFIN PIPE FICT.
8" VALVE	1 EACH	1 EACH	MUELLER COMP.
8" WATER LINE	399'	399'	GRIFFIN PIPE FICT.
6" X 8" TEE	47'	47'	"
4.5' F.H.	1 EACH	1 EACH	MUELLER CO.
6" WATER VALVE	2 EACH	2 EACH	"

NOTE: REMAINING THREE WATER HOUSE CONNECTIONS TO BE CONSTRUCTED BY OTHERS WHEN LOCATION & SIZE FOR INDIVIDUAL PARCELS HAVE BEEN DETERMINED.



VICINITY MAP
SCALE: 1"=600'

NO. OF LOTS	4
NO. OF WHC	1
NO. OF SHC	0
DRAINAGE AREA:	LITTLE PATUXENT

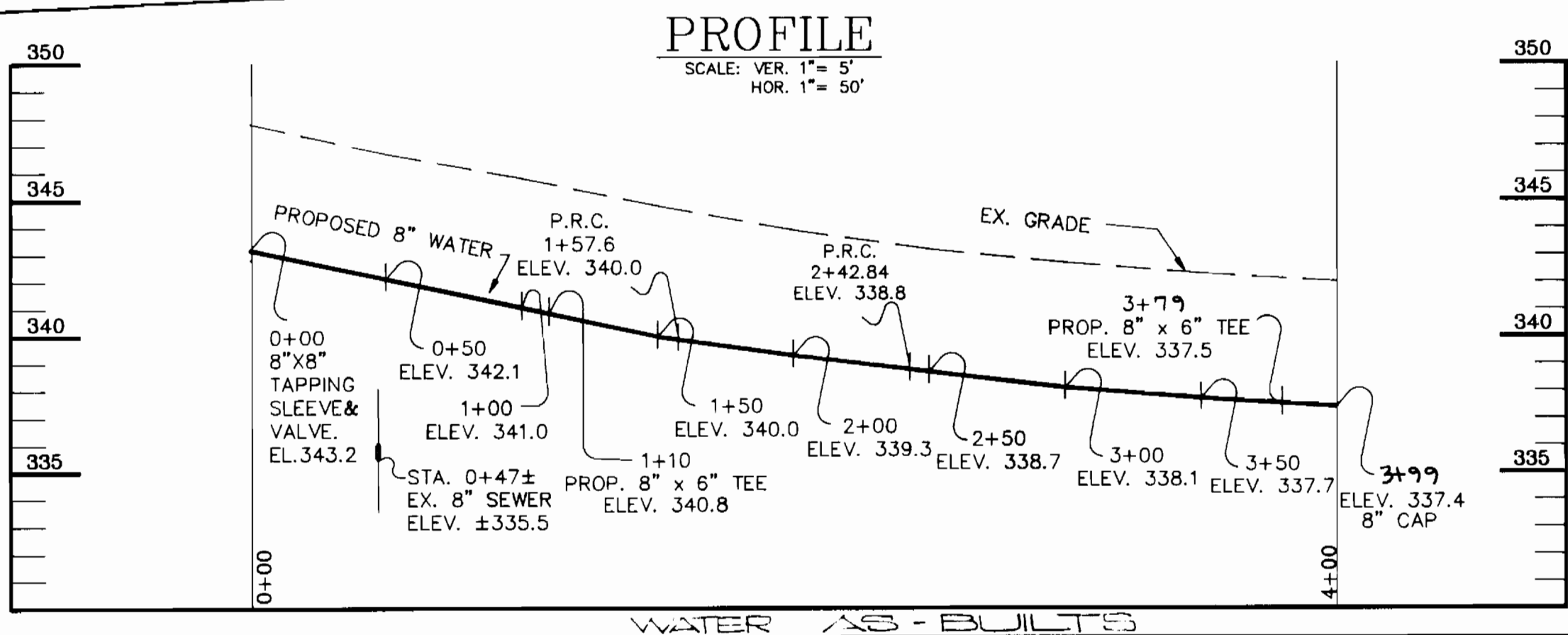
- SEQUENCE OF CONSTRUCTION**
- OBTAIN ALL NECESSARY PERMITS.
 - NOTIFY HOWARD COUNTY DEPARTMENT OF PUBLIC WORKS (see general note 10).
 - STAKE OUT AREA FOR CLEARING.
 - CLEAR AREA TO BE DISTURBED.
 - CONSTRUCT WATER LINE REACHING EXCAVATED MATERIAL ON BEHS (upside) SIDE OF TRENCH. BACKFILL AND STABILIZE TRENCH AT THE CLOSE OF WORK EACH DAY.
 - UPON COMPLETION OF WORK, FULLY STABILIZE ALL DISTURBED AREAS WITH SEED AND MULCH.

BENCHMARK: Howard County Monument No. 2941002 ELEV. 359.68
CONCRETE MONUMENT LOCATED IN B&E TRANSMISSION LINE R/W (TOWERS 29&29E) HALFWAY BETWEEN CURB & SIDEWALK ON SOUTH SIDE OF CARVED STONE WAY.

BENCHMARK: Howard County Monument No. 2941003 ELEV. 367.23
CONCRETE MONUMENT LOCATED IN B&E TRANSMISSION LINE R/W (TOWERS 27 & 27E) 154'+/- FROM THE END OF HICKORY LMB ROAD.

SNOWDEN RIVER PARKWAY

PLAN
SCALE: 1"=50'



7-15-92 DATE

ADDED 1/2" WATER CONNECTION DESCRIPTION

SEDIMENT CONTROL MEASURES FOR THIS CONTRACT WILL BE IMPLEMENTED IN ACCORDANCE WITH SECTION 219 OF THE STANDARD SPECIFICATIONS

REVIEWED FOR HOWARD SOIL CONSERVATION DISTRICT AND MEETS TECHNICAL REQUIREMENTS
James M. Helm 8/26/91 DATE

THIS DEVELOPMENT PLAN IS APPROVED FOR SOIL EROSION AND SEDIMENT CONTROL BY THE HOWARD SOIL CONSERVATION DISTRICT
John R. Robertson 8/26/91 DATE

FINAL PLAT / SITE DEVELOPMENT PLANS
REFERENCE NUMBERS F-92-02 AND SDP-92 05



DEPARTMENT OF PUBLIC WORKS
HOWARD COUNTY, MARYLAND

James M. Helm 8/26/91 DATE
DIRECTOR OF PUBLIC WORKS

Robert M. Bennett 8-20-91 DATE
CHIEF-BUREAU OF UTILITIES

PREPARED BY:
JOHN R. HEINTRICHS, P.E.
5124 S. ROLLING ROAD
RELAY, MARYLAND 21227

(301)247-4036 FAX 247-9397

CONTRACT NO. 44-3148-D

PLAN AND PROFILE
8" WATER EXTENTION

VILLAGE OF OWEN BROWN
SECTION 2, AREA 2
F-92-02 AND SDP-92-05
TAX MAP 42, PARCELS A-32 THRU A-35
MINSTREL WAY
2nd ELECTION DISTRICT
HOWARD COUNTY, MARYLAND

SCALE: AS SHOWN
DRAWING NO. 1 of 1