

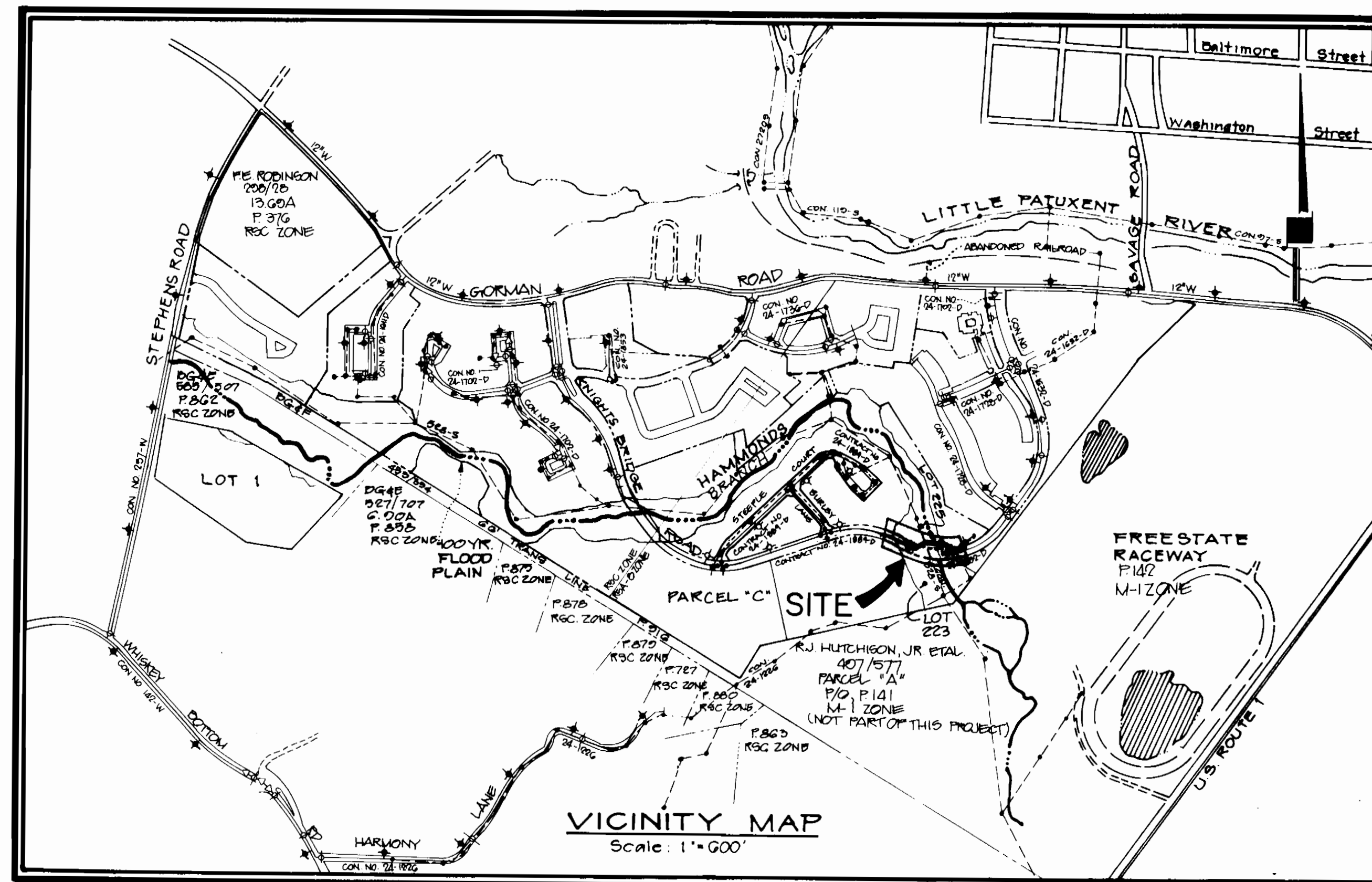
BOWLING BROOK FARMS

KNIGHTS BRIDGE ROAD

GENERAL NOTES

1. THE APPROXIMATE LOCATION OF ALL UTILITIES IS SHOWN BASED ON INFORMATION OBTAINED FROM AVAILABLE RECORDS. THE CONTRACTOR SHALL LOCATE, PROTECT AND SUPPORT THE EXISTING UTILITIES AND MAINTAIN UNINTERRUPTED SERVICE. ANY DAMAGE INCURRED SHALL BE REPAIRED IMMEDIATELY TO THE SATISFACTION OF THE ENGINEER/INSPECTOR, AT THE CONTRACTOR'S EXPENSE.
2. CONTRACTOR SHALL LOCATE EXISTING UTILITIES A MINIMUM OF TWO (2) WEEKS IN ADVANCE OF CONSTRUCTION OPERATIONS IN THE VICINITY OF PROPOSED UTILITIES AT HIS OWN EXPENSE.
3. CONTRACTOR SHALL NOTIFY THE FOLLOWING UTILITIES OR AGENCIES AT LEAST FIVE (5) WORKING DAYS BEFORE STARTING WORK SHOWN ON THESE PLANS.
 STATE HIGHWAY ADMINISTRATION - 531-5533
 BALTIMORE GAS & ELECTRIC COMPANY - 561-2585 (CONTRACTOR SERVICES)
 BALTIMORE GAS & ELECTRIC COMPANY - 234-6313 (UNDERGROUND DAMAGE CONTROL)
 BALTIMORE GAS & ELECTRIC COMPANY - 298-9013 (TROUBLE SHOOTING)
 "MISS UTILITY" 888-257-7777
 CHESAPEAKE & POTOMAC (CAP) TELEPHONE COMPANY - 725-9976
 BUREAU OF UTILITIES/HOWARD COUNTY - 515 4900
4. ALL DETAILS NOT SHOWN ON THE DRAWINGS SHALL BE CONSTRUCTED IN ACCORDANCE WITH HOWARD COUNTY STANDARD DETAILS.
5. ALL MATERIALS AND CONSTRUCTION METHODS SHALL BE IN ACCORDANCE WITH HOWARD COUNTY SPECIFICATIONS AND HOWARD COUNTY DESIGN MANUAL, VOLUME IV, 1991 AMENDMENTS.
6. ALL TRAFFIC CONTROL DEVICES SHALL BE IN ACCORDANCE WITH STANDARD SPECIFICATIONS FOR CONSTRUCTION AND MATERIALS, LATEST EDITION AND THE MANUAL ON UNIFORM TRAFFIC CONTROL DEVICES, LATEST EDITION.
7. TREES SHALL BE PROTECTED FROM DAMAGE TO THE MAXIMUM EXTENT POSSIBLE. TREES SIX INCH (6") DIAMETER OR GREATER (MEASURED FOUR FEET (4') ABOVE EXISTING GRADE) ADJACENT TO THE LIMITS OF CONSTRUCTION SHALL NOT BE REMOVED OR DAMAGED BY THE CONTRACTOR.
8. ALL HORIZONTAL AND VERTICAL CONTROLS ARE BASED ON MARYLAND STATE PLANE COORDINATES SYSTEM PROVIDED BY HOWARD COUNTY.
9. TOPOGRAPHY TAKEN FROM MAPS PREPARED BY PHOTOGRAMMETRY BY AERIAL SURVEY IN 1984. TOPOGRAPHY FIELD CHECKED 1986.
10. ALL PIPE ELEVATIONS ARE INVERT ELEVATIONS.
11. ALL WATER MAINS TO BE D.I.P. CLASS 52 UNLESS OTHERWISE NOTED.
12. TOP OF ALL WATER MAINS SHALL HAVE A MINIMUM OF 3-1/2' COVER UNLESS OTHERWISE NOTED.
13. VALVES ADJACENT TO TEES SHALL BE STRAPPED TO TEES.
14. ALL WATER MAIN FITTINGS REQUIRE CONCRETE THRUST BLOCKS AS DESCRIBED IN HOWARD COUNTY STANDARD SPECIFICATIONS AND DETAILS MANUAL, VOLUME IV.
15. THE CONTRACTOR SHALL NOT OPERATE ANY WATER MAIN VALVES ON THE EXISTING SYSTEM.
16. CLEAR ALL UTILITIES BY A MINIMUM OF 12", CLEAR ALL POLES BY 2'-0" MINIMUM OR TUNNEL AS REQUIRED. ANY COST INCURRED TO THE CONTRACTOR FOR TUNNELING OR BRACING AT POLES SHALL BE INCLUDED IN UNIT PRICES BID FOR EXCAVATION AND SHALL BE INCLUDED IN UNIT PRICES BID FOR EXCAVATION BACKFILL.
17. SEPARATION BETWEEN WATER AND SANITARY SEWER: WATER MAINS SHALL BE LAID AT LEAST TEN FEET (10') HORIZONTALLY FROM ANY EXISTING OR PROPOSED SEWER. DEVIATION MAY BE ALLOWED FOR INSTALLATION OF THE WATER MAIN CLOSER TO A SEWER, PROVIDED THAT THE WATER MAIN IS LAID IN A SEPARATE TRENCH, SUCH THAT THE BOTTOM OF THE WATER MAIN IS AT LEAST SIX FEET (6') ABOVE THE TOP OF THE SEWER. WATER MAINS CROSSING SEWERS SHALL BE LAID TO PROVIDE A MINIMUM VERTICAL DISTANCE OF TWELVE INCHES (12") BETWEEN THE BOTTOM OF THE WATER MAIN AND THE TOP OF THE SEWER LINE.
18. BURY LINE ELEVATIONS ON FIRE HYDRANTS SHALL BE SET TO THE ELEVATIONS SHOWN ON THE DRAWINGS. ALL FIRE HYDRANTS SHALL BE STRAPPED AND BUTTRESSED WITH CONCRETE IN ACCORDANCE WITH STANDARD DETAILS. SOIL AROUND THE FIRE HYDRANT SHALL BE COMPACTED IN ACCORDANCE WITH SECTION 1000.4.1005 OF THE STANDARD SPECIFICATIONS.
19. ALL WATER HOUSE CONNECTIONS SHALL BE FOR AN INSIDE METER SETTING.
20. ALL D.I.P. FITTINGS SHALL BE IN ACCORDANCE WITH AWWA SPECIFICATIONS C-153 DUCTILE IRON COMPACT FITTINGS, SINCE THROUGH 12-INCH FOR WATER AND OTHER LIQUIDS.
21. ALL FIRE HYDRANTS SHALL BE SITUATED PER LOCATION "A" STD. DETAIL W. 1.11

QUANTITIES			
ITEM	ESTIMATED	AS BUILT	MATERIAL/SUPPLIER
MANHOLE	---	---	---
8" WATER	---	---	---
12" WATER	510 L.F.	491	UNION PIPE
8" VALVE	---	---	---
12" VALVE	2 EACH	1	KENNEDY
FIRE HYDRANT	1 EACH	1	GRIFFIN PIPE
AIR RELEASE MANHOLE	---	---	---
BLOW OFF VALVE	1 EACH	1	KIPFERLE
6" WATER	15 L.F.	12	GRIFFIN
2" WATER	---	---	---
6" VALVE	1 EACH	1	KENNEDY



WATERCODE - C03
SEWER CODE - 727.0000

TYPE OF BUILDINGS	N/A
NUMBER OF LOTS	N/A
NUMBER OF WATER HOUSE CONNECTIONS	N/A
NUMBER OF SEWER HOUSE CONNECTIONS	N/A
DRAINAGE AREA	Little Patuxent River

CONTRACT NO. 44-3144-D

WATER MAIN

CONSTRUCTION PLANS

LEGEND

PROPOSED	EXISTING
SANITARY SEWER	---
SEWER HOUSE CONNECTION	---
WATER	---
WATER HOUSE CONNECTION	---
STORM DRAIN	---
PROPOSED R/W	---
EXISTING CONTOURS	---
LIMITS OF SUBMISSION	---
MANHOLE NUMBER	---
FIRE HYDRANT-/VALVE	---
EASEMENT	---

SEDIMENT CONTROL MEASURES FOR THIS CONTRACT WILL BE IMPLEMENTED IN ACCORDANCE WITH SECTION 219 OF THE HOWARD COUNTY DESIGN MANUAL AND STANDARDS AND SPECIFICATIONS FOR SOIL EROSION AND SEDIMENT CONTROL IN DEVELOPING AREAS AND ALSO AS SHOWN ON THE GRADING AND SEDIMENT CONTROL PLAN F-91-70

REVIEWED FOR HOWARD SOIL CONSERVATION DISTRICT AND MEETS TECHNICAL REQUIREMENT
 SIGNATURE: *[Signature]* DATE: 7/21/91

THIS DEVELOPMENT PLAN IS APPROVED FOR SOIL EROSION AND SEDIMENT CONTROL BY THE HOWARD COUNTY CONSERVATION DISTRICT.
 APPROVED BY: *[Signature]* DATE: 7/24/91
 HOWARD SCD

OWNER/DEVELOPER
 GORMAN ROAD LIMITED PARTNERSHIP
 C/O JAMES F. KNOTT DEVELOPMENT CORPORATION
 110 WEST ROAD, SUITE 203
 TOWSON, MARYLAND 21284
 (301) 321-1000

DRAWING INDEX	
1.	Title Sheet
2.	Plan & Profile Water Main

WATER LOOP, EAST CROSSING OF HAMMOND BRANCH

DEPARTMENT OF PUBLIC WORKS
HOWARD COUNTY, MARYLAND

[Signature] 7/31/91
DIRECTOR OF PUBLIC WORKS DATE

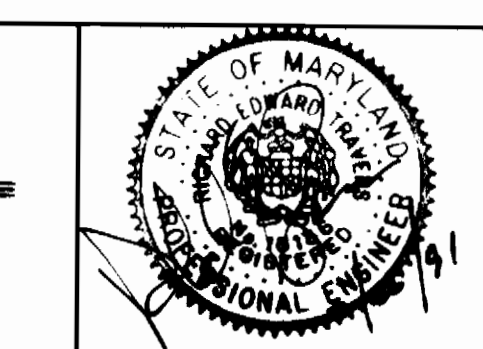
[Signature] 7/29/91
BUREAU OF UTILITIES DATE

[Signature] 7/21/91
CHIEF, BUREAU OF ENGINEERING DATE

[Signature] 7/21/91
CHIEF, LAND DEVELOPMENT DIVISION DATE

PHR&A

PATTON, HARRIS, RUST & ASSOCIATES, PC
 7609 STANDISH PLACE
 ROCKVILLE, MARYLAND 20855
 METRO: 301-762-2220 BALT.: 301-792-7244



DES:	EIC		
DRN:			
CHK:	MJK	2	ISSUED TO HOWARD COUNTY FOR SIGNATURE
		1	ISSUED TO HOWARD COUNTY FOR REV.
DATE:	BY	NO.	REVISION

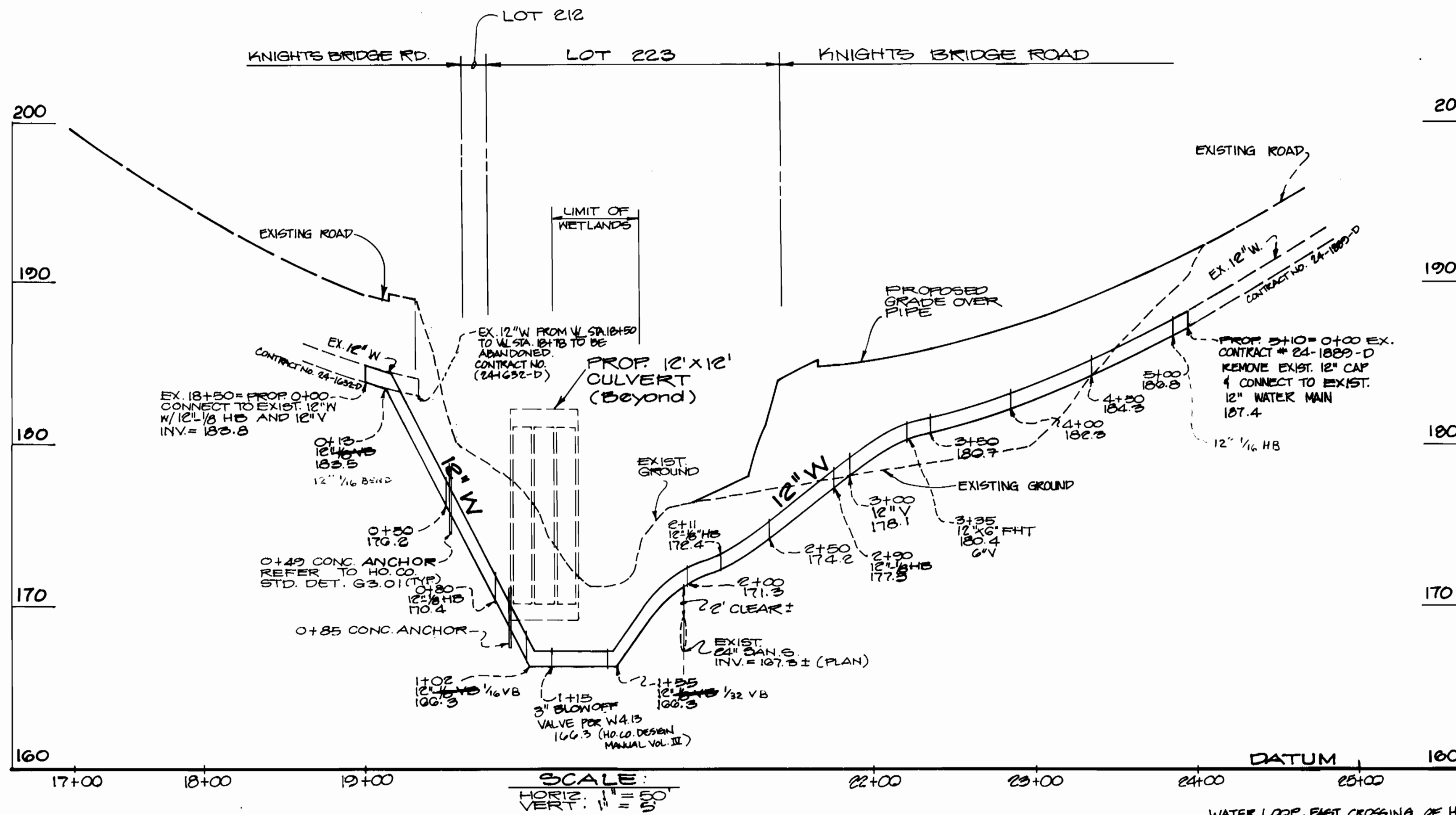
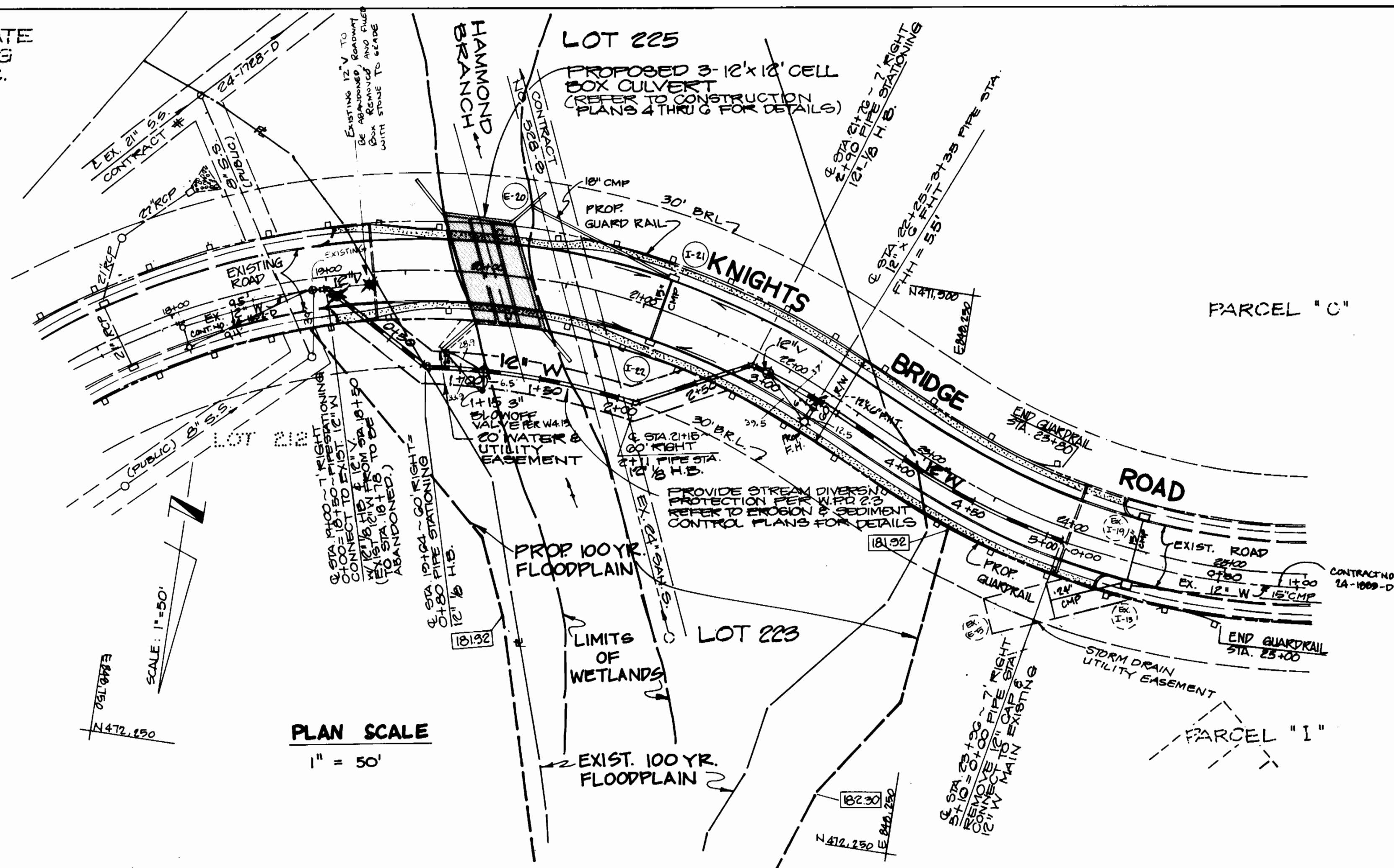
TITLE SHEET	
DATE:	600' SCALE MAP NO. 47 BLOCK NO.

BOWLING BROOK FARMS
 KNIGHTS BRIDGE ROAD
 CONTRACT No. 44-3144-D
 A RESUBDIVISION OF BOLLING BROOKE, LOT 2
 SIXTH ELECTION DISTRICT
 HOWARD COUNTY, MARYLAND

SCALE AS SHOWN
 SHEET 1 OF 2

AS-BUILT 9-22-92

FREESTATE RACING ASSOC.



OWNER / DEVELOPER
BORMAN ROAD LIMITED PARTNERSHIP
C/O JAMES F. KNOTT DEVELOPMENT CORP.
110 WEST ROAD, SUITE 203
TOWSON, MARYLAND 21284
(301) 921-1000

DEPARTMENT OF PUBLIC WORKS
HOWARD COUNTY, MARYLAND

PHR&A
PATTON, HARRIS, RUST & ASSOCIATES, P.C.
7801 BEAUMONT PLACE
ROCKVILLE, MARYLAND 20855
METRO: 301-763-2220 BALTO: 301-792-7244



DES: EIC			
DRN:			
CHK:	MM	AS-BUILT	9/24/92
DATE:	MJK	ISSUED TO HOWARD COUNTY FOR SIGNATURE	7/16/91
	I	ISSUED TO HOWARD COUNTY FOR REVIEW	
BY NO.		REVISION	DATE

PLAN & PROFILE
12" WATER MAIN

600' SCALE MAP NO. 47 BLOCK NO. _____
AS-BUILT 9-22-92

BOWLING BROOK FARMS
KNIGHTS BRIDGE ROAD
CONTRACT No. 44-3144-D
A RESUBDIVISION OF BOLLING BROOKE, LOT 2
SIXTH ELECTION DISTRICT
HOWARD COUNTY, MARYLAND

SCALE AS SHOWN
SHEET 2 OF 2

21-1-15812