

GENERAL NOTES



COLUMBIA ASSOCIATION

**OAKLAND RIDGE INDUSTRIAL PARK
SECTION 3 LOT 81
PUBLIC WORKS FACILITY
2ND ELECTION DISTRICT
HOWARD COUNTY, MARYLAND**

PART I - GENERAL

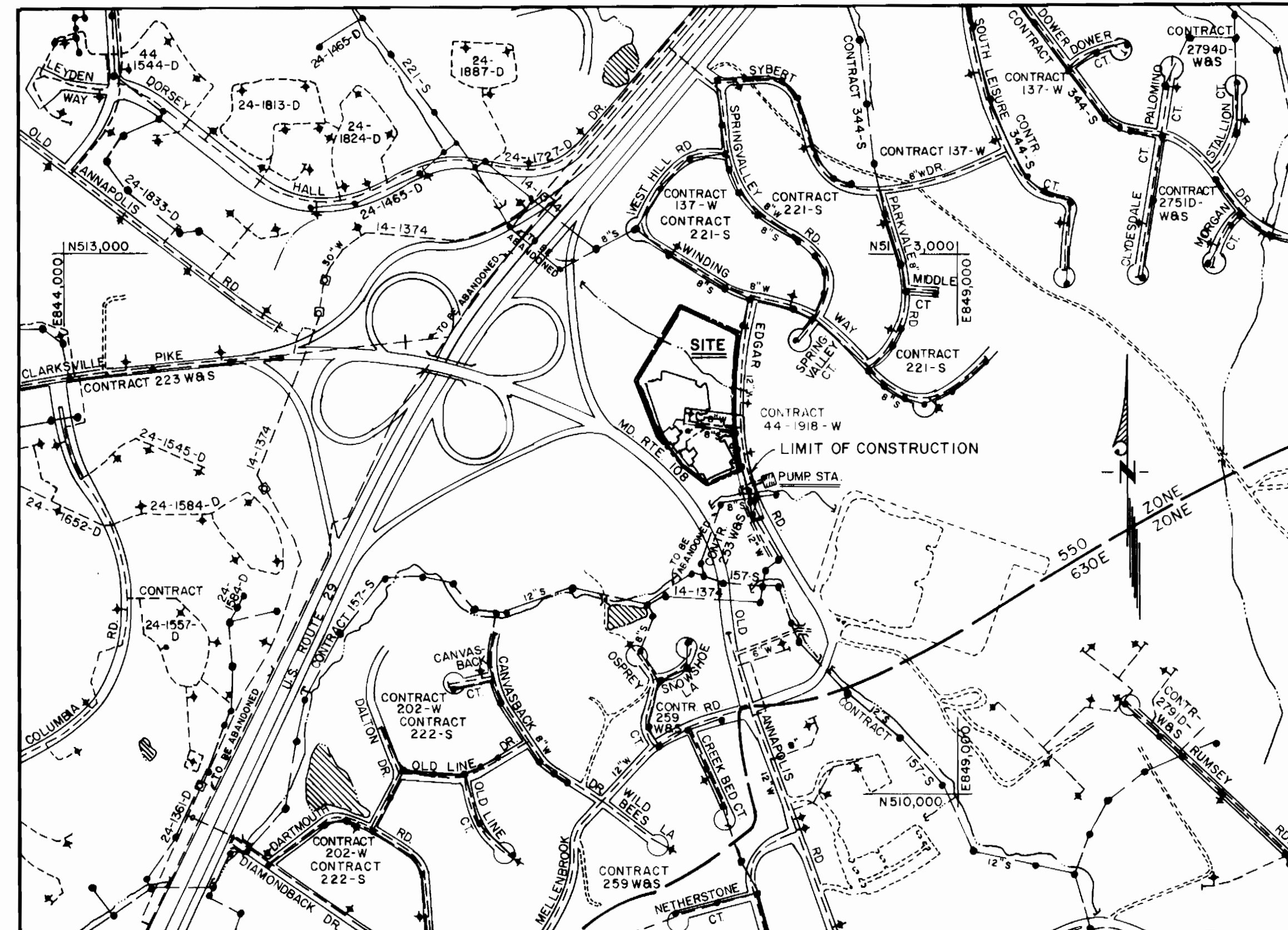
- APPROXIMATE LOCATION OF EXISTING MAINS ARE SHOWN. THE CONTRACTOR SHALL TAKE ALL NECESSARY PRECAUTIONS TO PROTECT EXISTING MAINS AND SERVICES AND MAINTAIN UNINTERRUPTED SUPPLY. ANY DAMAGE INCURRED SHALL BE REPAIRED IMMEDIATELY TO THE SATISFACTION OF THE ENGINEER, AT THE CONTRACTOR'S EXPENSE.
- ALL HORIZONTAL CONTROLS ARE BASED ON MARYLAND STATE COORDINATES.
- ALL VERTICAL CONTROLS ARE BASED ON U.S.G.S. DATUM.
- ALL PIPE ELEVATIONS SHOWN ARE INVERT ELEVATIONS.
- CLEAR ALL UTILITIES BY A MINIMUM OF 6". CLEAR ALL POLES BY 2'-0" MINIMUM OR TUNNEL AS REQUIRED. ANY COST INCURRED TO THE CONTRACTOR FOR TUNNELING OR BRACING AT POLES SHALL BE INCLUDED IN UNIT PRICES BID FOR CONSTRUCTION OF THE MAIN.
- FOR DETAILS NOT SHOWN ON THE DRAWINGS USE THE HOWARD COUNTY STANDARD DETAILS.
- FOR MATERIALS AND CONSTRUCTION METHODS USE HOWARD COUNTY STANDARD SPECIFICATIONS.
- CONTRACTOR SHALL LOCATE EXISTING UTILITIES A MINIMUM OF TWO (2) FEET IN ADVANCE OF CONSTRUCTION OPERATIONS IN THE VICINITY OF PROPOSED UTILITIES AT HIS OWN EXPENSE.
- CONTRACTOR SHALL NOTIFY THE FOLLOWING UTILITIES OR AGENCIES AT LEAST FIVE (5) WORKING DAYS BEFORE STARTING WORK SHOWN ON THESE PLANS:
 - BALTIMORE GAS AND ELECTRIC COMPANY - UNDERGROUND ELECTRIC DISTRIBUTION CUSTOMER SERVICE - 685-0123
 - BALTIMORE GAS AND ELECTRIC COMPANY - UNDERGROUND GAS DISTRIBUTION CUSTOMER SERVICE - 685-0123
 - ENGINEERING - "DAMAGE CONTROL" - 234-5621
 - "MISS UTILITY" - 1-559-0100
 - CHESAPEAKE & POTOMAC (C&P) TELEPHONE COMPANY - 725-9976
 - AMERICAN TELEPHONE AND TELEGRAPH - CABLE LOCATION DIVISION - 393-3953
 - COLUMBIAN PIPELINE COMPANY - 795-1390
 - BUREAU OF UTILITIES HOWARD COUNTY - 313-4900

PART II - WATER

- ALL WATER MAINS TO BE D.I.P. UNLESS OTHERWISE NOTED.
- TOP OF ALL WATER MAINS TO HAVE A MINIMUM OF 3-1/2' COVER UNLESS OTHERWISE NOTED.
- VALVES ADJACENT TO TEES SHALL BE STRAPPED TO TEES.
- BLOCK ALL FITTINGS WITH CONCRETE.
- BURY LINE ELEVATIONS ON FIRE HYDRANTS SHALL BE SET TO THE ELEVATIONS SHOWN ON THE DRAWINGS. ALL FIRE HYDRANTS SHALL BE STRAPPED AND BUTTERED WITH CONCRETE IN ACCORDANCE WITH STANDARD DETAILS. SOIL AROUND THE FIRE HYDRANT TO BE COMPACTED IN ACCORDANCE WITH SECTIONS 1000 AND 1005 OF THE STANDARD SPECIFICATIONS.
- ALL WATER HOUSE CONNECTIONS SHALL BE FOR AN INSIDE METER SETTING.
- THE CONTRACTOR SHALL NOT OPERATE ANY WATER MAIN VALVES ON THE EXISTING SYSTEM.
- FOR ALL COPPER WATER HOUSE CONNECTIONS, UTILIZE FLARED TYPE FITTINGS ONLY.
- EACH BUILDING TO FURNISH A 2 INCH METER SETTING FOR DOMESTIC FLOW.

PART III - SEWER

- ALL SEWER MAINS SHALL BE C.S.P.X., R.C.S.P., V.C.P.X.
- THE CONTRACTOR SHALL PROVIDE A JOINT IN ALL SEWER MAINS WITHIN 2'-0" OF EXTERIOR MANHOLE WALL.
- ALL MANHOLES SHALL BE 4'-0" INSIDE DIAMETER, UNLESS OTHERWISE NOTED.



VICINITY MAP Scale: 1" = 600'

TYPE OF BUILDING	OFFICE / WAREHOUSE
NO. OF LOTS/PARCELS	1
NO. OF WATER HOUSE CONNECTIONS	2
NO. OF SEWER HOUSE CONNECTIONS	3
DRAINAGE AREA	LITTLE PATUXENT
TREATMENT PLANT	LITTLE PATUXENT WATER QUALITY MANAGEMENT CENTER SAVAGE HOWARD COUNTY

ITEM	QUANTITIES		MATERIAL/SUPPLIER
	ESTIMATED	AS-BUILT	
8" SEWER	458 L.F.		
8" D.I.P. SEWER	16 L.F.		
8" WATER	286 L.F.		
4' DIA. MANHOLE	5		
FIRE HYDRANTS	1		
8" x 6" TEE	2		
8" x 6" REDUCER	1		
8" 1/16 BEND	1		
8" 1/8 BEND	4		
JACK AND BORE	50 L.F.		

WATER CODE	E 34	SEWER CODE	5750500
------------	------	------------	---------

SITE DEVELOPMENT PLAN 91-129 F-91-100
 THIS DEVELOPMENT PLAN IS APPROVED FOR SOIL EROSION AND SEDIMENT CONTROL BY THE HOWARD SOIL CONSERVATION DISTRICT.
 APPROVED: *John R. Rhoton* 10/16/91
 HOWARD S.C.D. DATE
 REVIEWED FOR HOWARD S.C.D. AND MEETS TECHNICAL REQUIREMENTS.
 APPROVED: *James M. Helton* 10/16/91
 U.S. SOIL CONSERVATION SERVICE DATE

DEPARTMENT OF PUBLIC WORKS
 HOWARD COUNTY, MARYLAND

Robert J. Sporn 10/24/91
 DIRECTOR OF PUBLIC WORKS DATE

John M. Ferguson 11/24/91
 CHIEF, BUREAU OF ENGINEERING DATE

John M. Ferguson 11/24/91
 CHIEF, LAND DEVELOPMENT DIVISION DATE

RBA ENGINEERS ARCHITECTS PLANNERS
 5560 STERRETT PLACE, SUITE 300
 COLUMBIA, MARYLAND 21044
 (301) 730-7950

STATE OF MARYLAND
 PROFESSIONAL ENGINEER

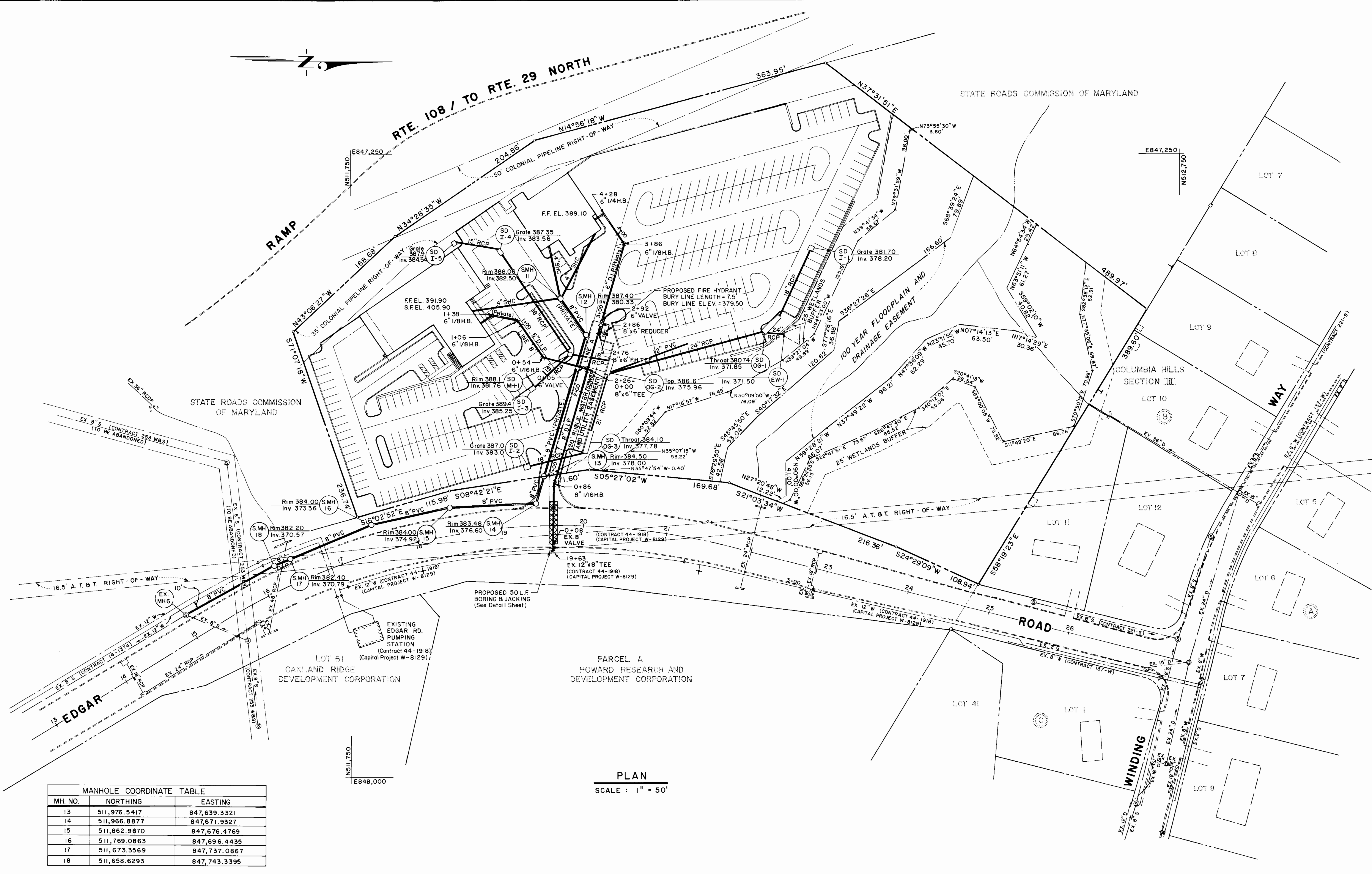
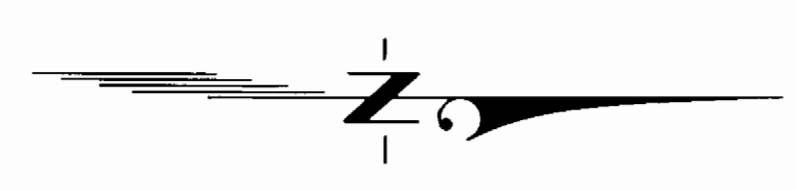
DES: J.M.M.			
DRN: J.M.M.			
CHK: J.W.C.			
DATE:	BY	NO	REVISION

**LOCATION MAP OF
WATER AND SEWER**
 CONTRACT NO. 24-3139-D
 600 SCALE MAP NO. S-30/W-30 BLOCK NO. 10

OAKLAND RIDGE INDUSTRIAL PARK
 SECTION 3 LOT 81
PUBLIC WORKS FACILITY

2ND ELECTION DISTRICT HOWARD COUNTY, MARYLAND

SCALE AS SHOWN
 SHEET 1 OF 3



MANHOLE COORDINATE TABLE		
MH. NO.	NORTHING	EASTING
13	511,976.5417	847,639.3321
14	511,966.8877	847,671.9327
15	511,862.9870	847,676.4769
16	511,769.0863	847,696.4435
17	511,673.3569	847,737.0867
18	511,658.6293	847,743.3395

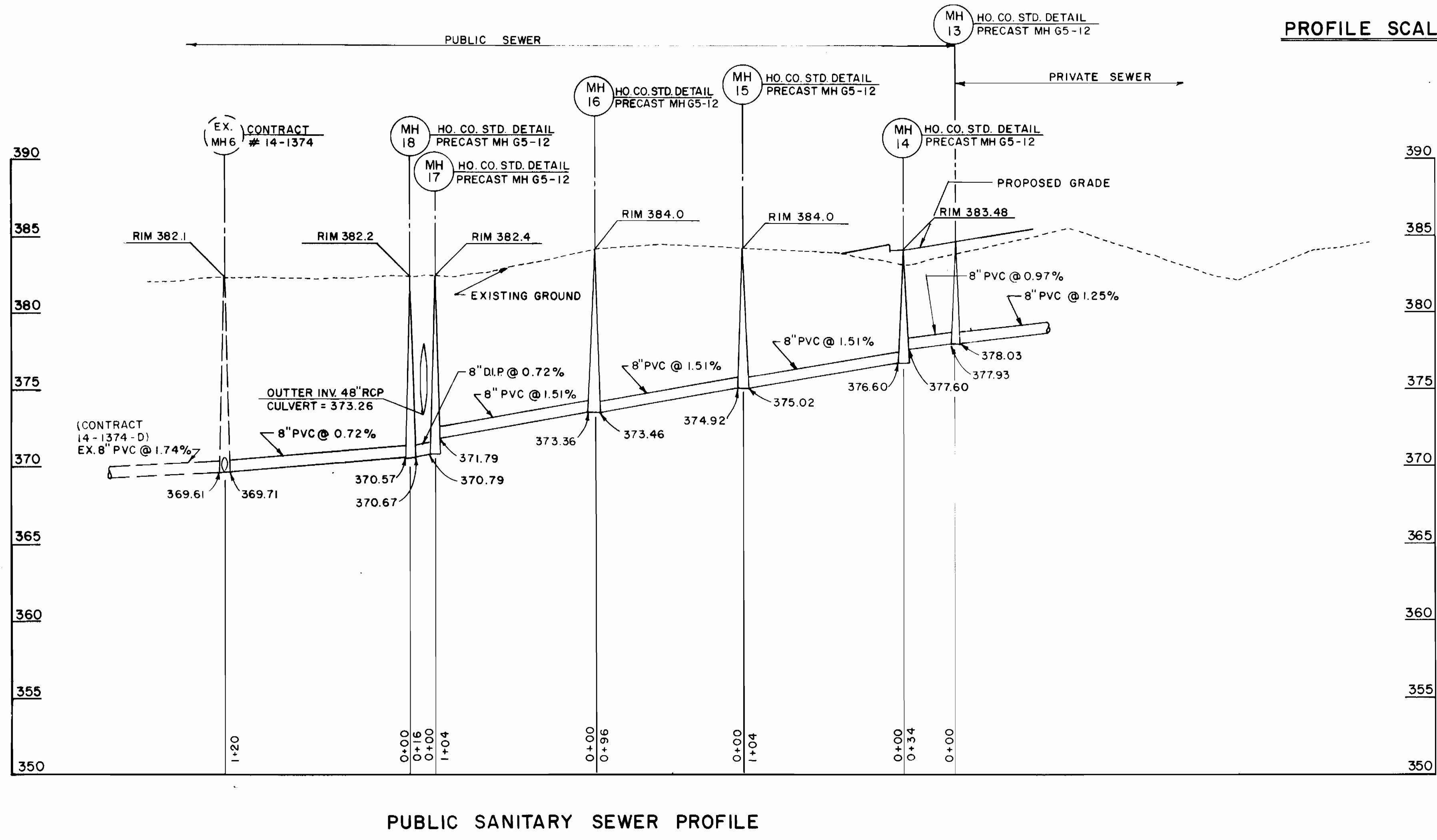
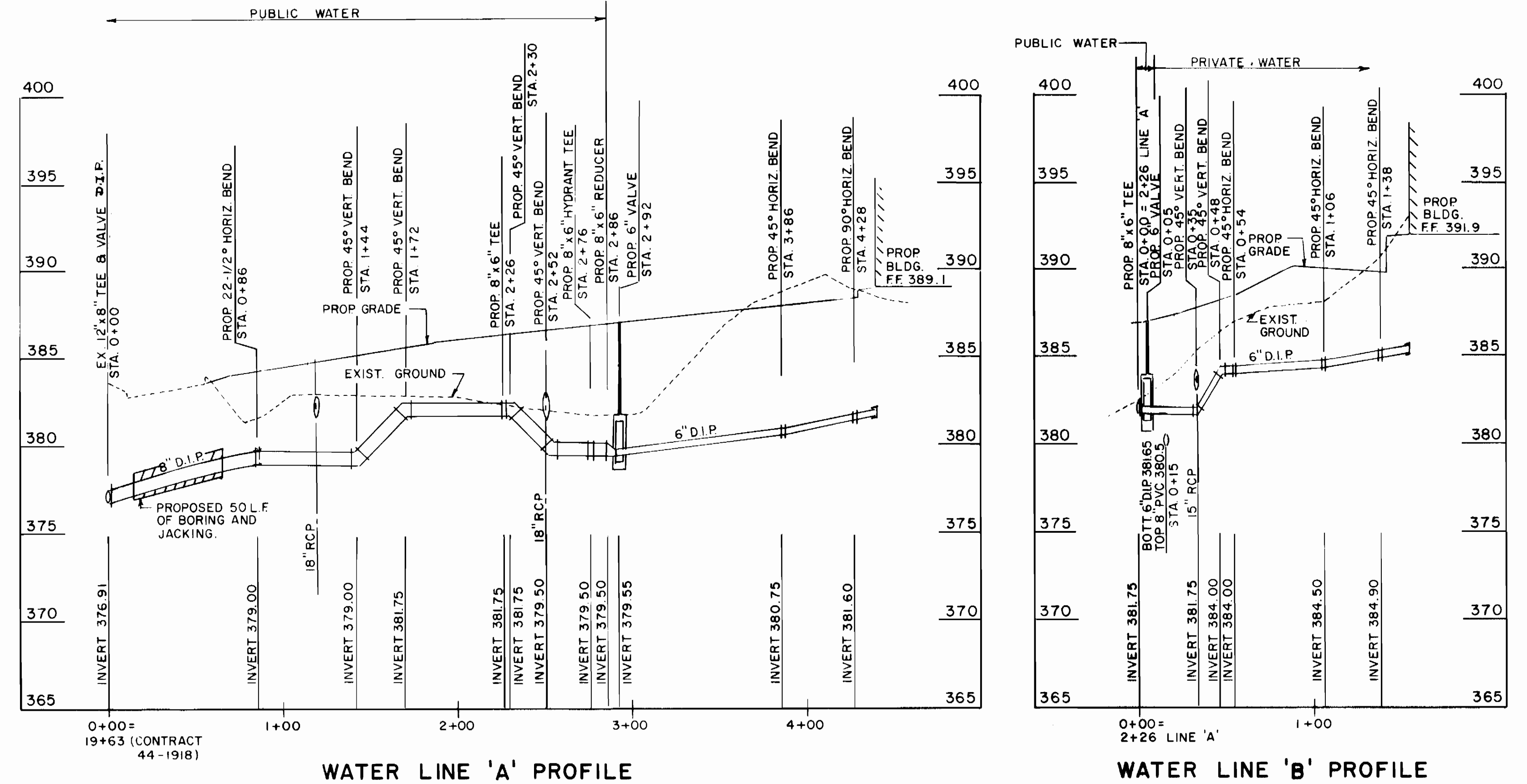
PLAN
SCALE: 1" = 50'

DEPARTMENT OF PUBLIC WORKS HOWARD COUNTY, MARYLAND DIRECTOR OF PUBLIC WORKS DATE: 10/24/01	 ENGINEERS ARCHITECTS PLANNERS 5560 STERRETT PLACE, SUITE 300 COLUMBIA, MARYLAND 21044 (301) 750-7950		DES: J.W.C.			PLAN OF WATER AND SEWER MAIN CONTRACT NO. 24-3139-D	OAKLAND RIDGE INDUSTRIAL PARK SECTION 3 LOT 81 PUBLIC WORKS FACILITY	SCALE AS SHOWN
			DRN: J.M.M.					
 CHIEF, BUREAU OF UTILITIES DATE: 10-9-91	 CHIEF, LAND DEVELOPMENT DIVISION DATE: 10/24/01		CHK: J.W.C.			2ND ELECTION DISTRICT	HOWARD COUNTY, MARYLAND	SHEET 2 OF 3
			DATE:	BY:	NO.	REVISION	DATE:	

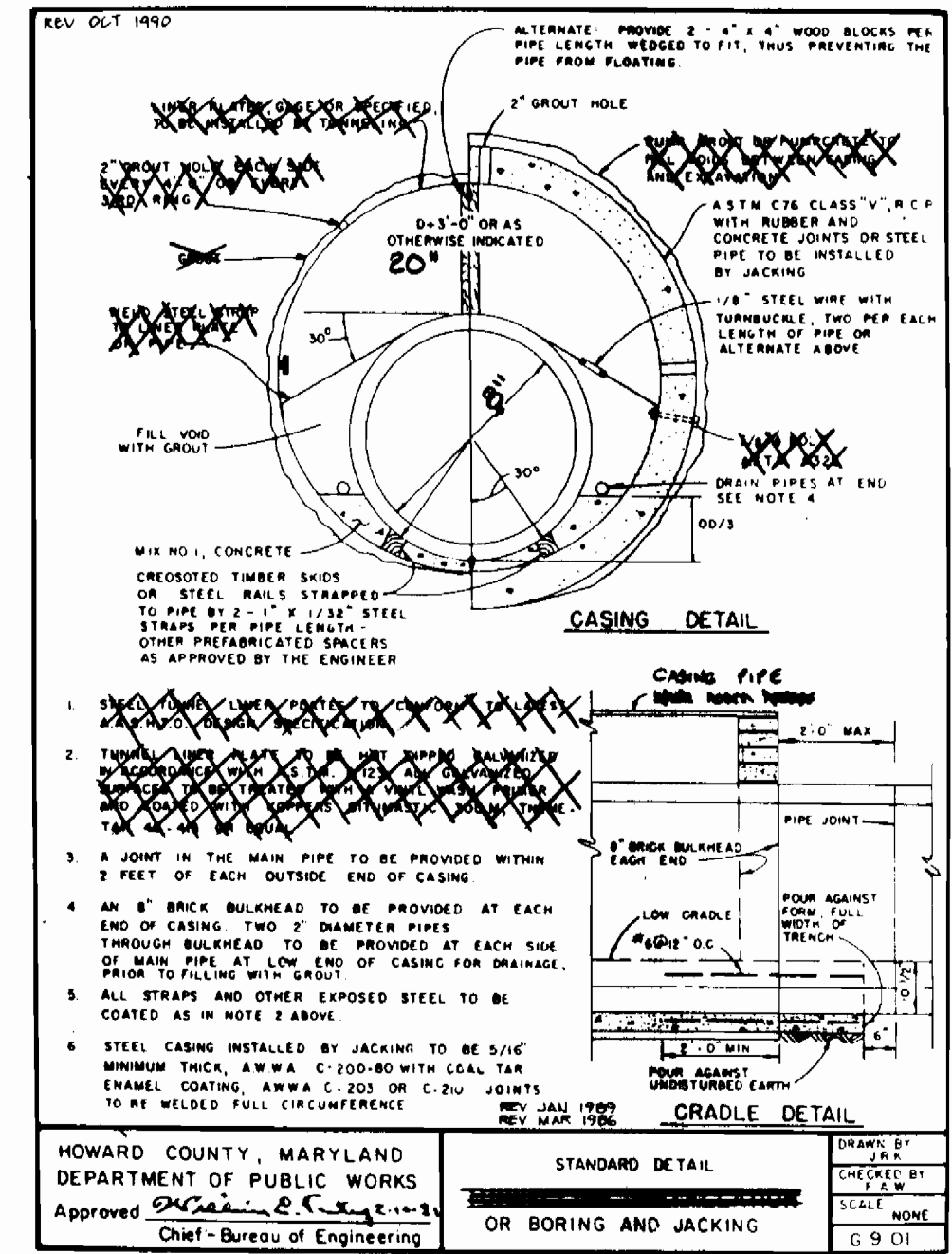
BRUNING 44-132-69150

SEWER CONNECTION NOTE

THE OWNER SHALL PROVIDE A SEPARATE AND INDEPENDENT SEWER CONNECTION FOR EACH TENANT OR OCCUPANT OF ANY BUILDING, SHOWN ON THIS SITE DEVELOPMENT PLAN, WHO WILL DISCHARGE NON-DOMESTIC WASTE TO THE PUBLIC SEWERAGE SYSTEM IF THIS WASTE IS REGULATED UNDER SECTION 18.122A OF THE HOWARD COUNTY CODE. EACH SEPARATE AND INDEPENDENT SEWER CONNECTION SHALL INCLUDE A STANDARD MANHOLE AND OTHER WASTE PRETREATMENT DEVICES AS REQUIRED AND APPROVED BY HOWARD COUNTY. WASTE LINES ON THE INTERIOR OF THE BUILDING SHALL BE DESIGNED, CONSTRUCTED OR MODIFIED SUCH THAT NON-DOMESTIC WASTE WILL BE DISCHARGED TO THE SEPARATE AND INDEPENDENT SEWER CONNECTION. NO TENANT OR OCCUPANT OF ANY BUILDING SHOWN ON THIS SITE DEVELOPMENT PLAN SHALL DISCHARGE REGULATED NON-DOMESTIC WASTE TO THE PUBLIC SEWERAGE SYSTEM PRIOR TO INSTALLATION OF THE SEPARATE AND INDEPENDENT SEWER CONNECTION AND RELATED INTERIOR WASTE LINES. THE ABOVE REQUIREMENTS SHALL APPLY TO ALL INITIAL AND FUTURE OCCUPANTS OR TENANTS.



PROFILE SCALE: HORIZ. 1" = 50'
VERT. 1" = 5'



JACK AND BORE DETAIL
NO SCALE

DEPARTMENT OF PUBLIC WORKS HOWARD COUNTY, MARYLAND 10/20/91 DIRECTOR OF PUBLIC WORKS 10-8-91 CHIEF, BUREAU OF UTILITIES	RBA ENGINEERS ARCHITECTS PLANNERS 5560 STERRETT PLACE, SUITE 300 COLUMBIA, MARYLAND 21044 (301) 730-7950	STATE OF MARYLAND PROFESSIONAL ENGINEER	DES: R.J.S.	BY: NO	REVISION:	DATE:	600' SCALE MAP NO. S-30/W-30 BLOCK NO. 10 2ND ELECTION DISTRICT HOWARD COUNTY, MARYLAND
			DRN: J.M.M. CHK: L.T.M.	DATE:	DATE:	DATE:	
OAKLAND RIDGE INDUSTRIAL PARK SECTION 3 LOT 81 PUBLIC WORKS FACILITY CONTRACT NO. 24-3139-D			PROFILES OF WATER AND SEWER MAIN		SCALE AS SHOWN SHEET 3 OF 3		