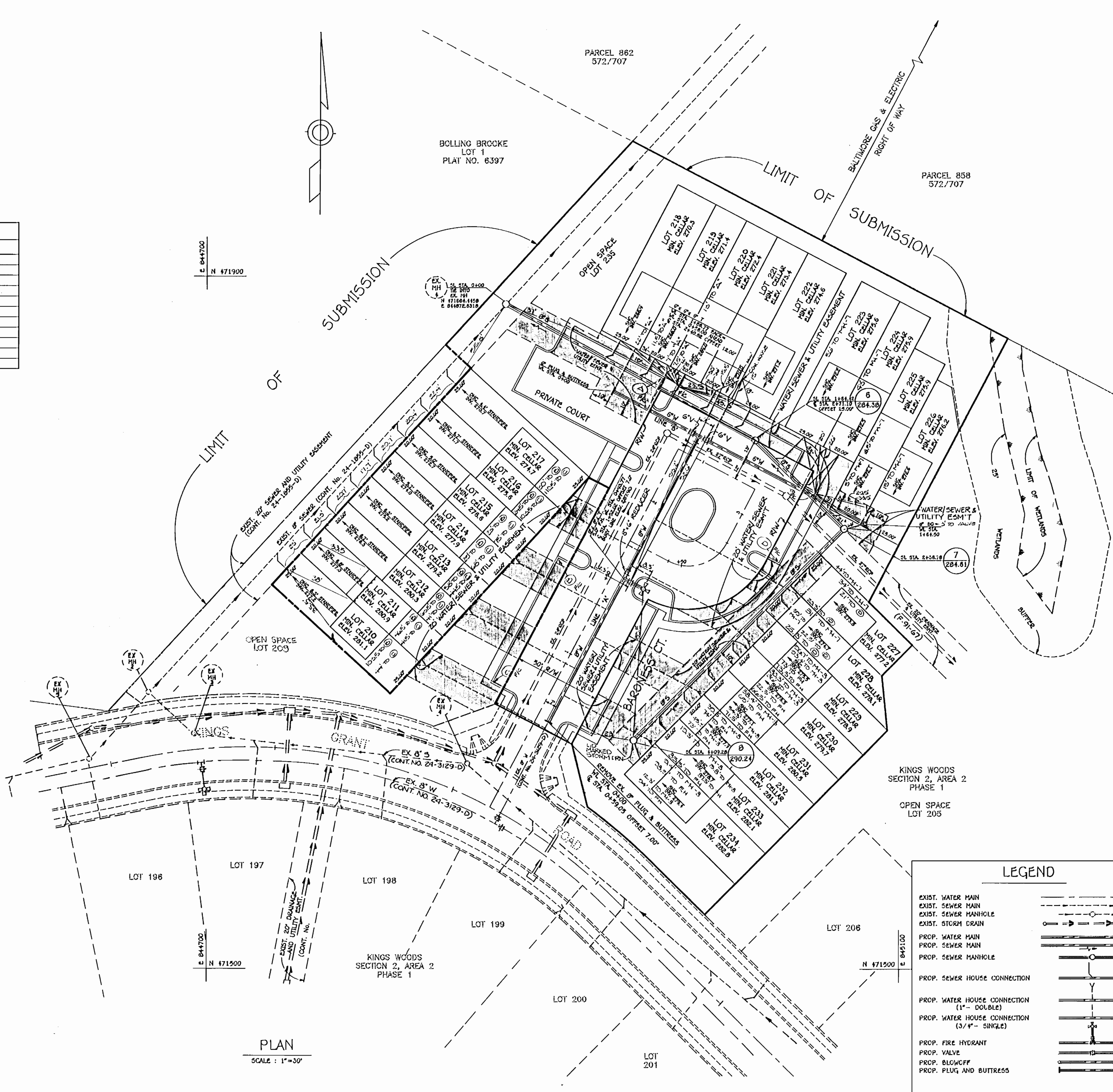
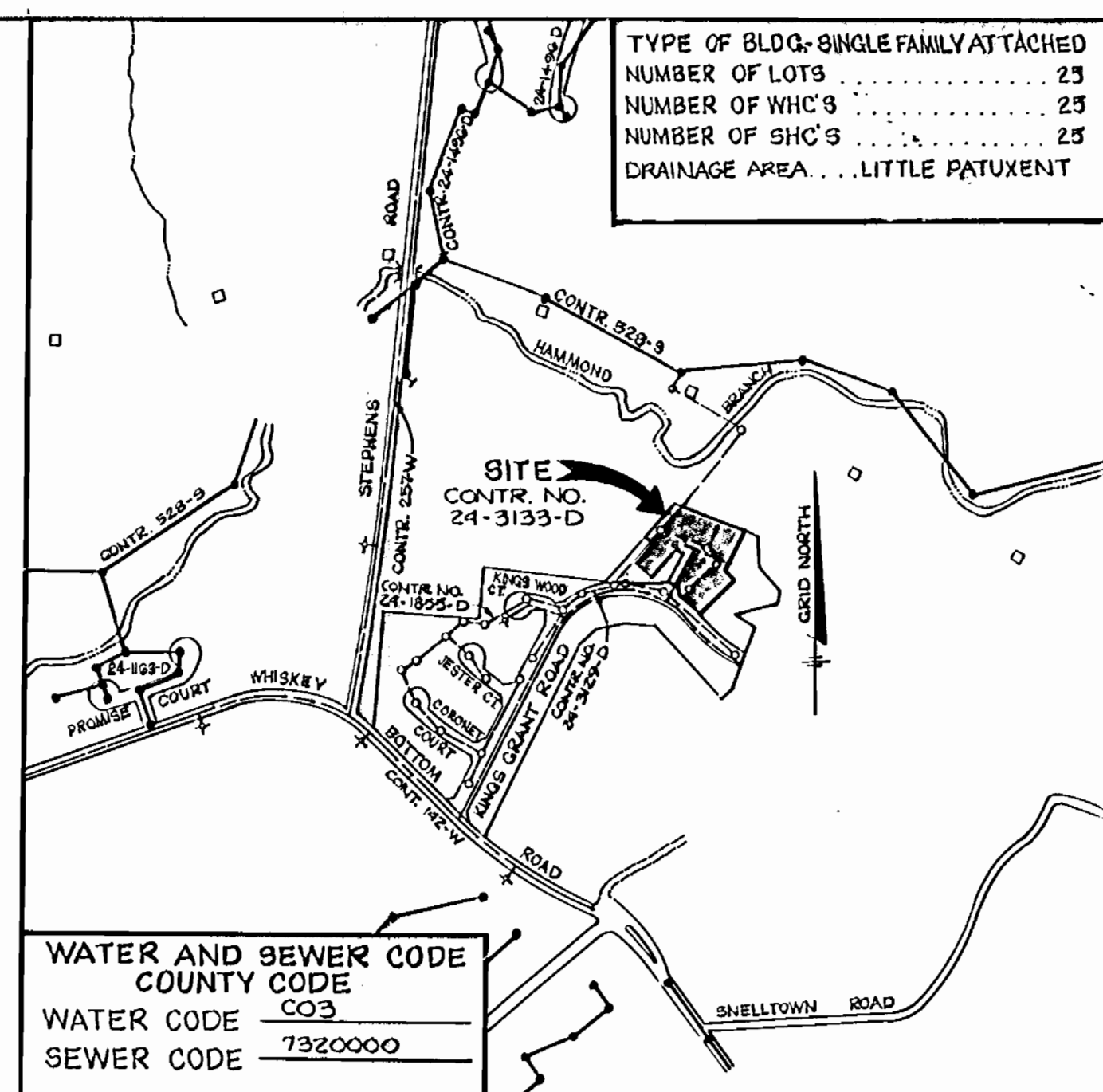


WATER AND SEWER HOUSE CONNECTION CHART			
LOT No.	WHC	SHC	
210	WL STA. 0+244.0 LINE 'A'	198.8' FROM EX. MH #	
211	WL STA. 0+244.0 LINE 'A'	176.3' FROM EX. MH #	
212	WL STA. 0+244.0 LINE 'A'	156.3' FROM EX. MH #	
213	WL STA. 0+244.0 LINE 'A'	136.3' FROM EX. MH #	
214	WL STA. 0+244.0 LINE 'A'	116.3' FROM EX. MH #	
215	WL STA. 0+244.0 LINE 'A'	96.3' FROM EX. MH #	
216	WL STA. 0+244.0 LINE 'A'	76.3' FROM EX. MH #	
217	WL STA. 0+244.0 LINE 'A'	56.3' FROM EX. MH #	
218	WL STA. 0+244.0 LINE 'A'	36.3' FROM EX. MH #	
219	WL STA. 0+244.0 LINE 'A'	16.3' FROM EX. MH #	
220	WL STA. 0+244.0 LINE 'A'	0.0' FROM EX. MH #	
221	WL STA. 0+244.0 LINE 'A'	0.0' FROM EX. MH #	
222	WL STA. 0+244.0 LINE 'A'	0.0' FROM EX. MH #	
223	WL STA. 0+244.0 LINE 'A'	0.0' FROM EX. MH #	
224	WL STA. 0+244.0 LINE 'A'	0.0' FROM EX. MH #	
225	WL STA. 0+244.0 LINE 'A'	0.0' FROM EX. MH #	
226	WL STA. 0+244.0 LINE 'A'	0.0' FROM EX. MH #	
227	WL STA. 0+244.0 LINE 'A'	0.0' FROM EX. MH #	
228	WL STA. 0+244.0 LINE 'A'	0.0' FROM EX. MH #	
229	WL STA. 0+244.0 LINE 'A'	0.0' FROM EX. MH #	
230	WL STA. 0+244.0 LINE 'A'	0.0' FROM EX. MH #	
231	WL STA. 0+244.0 LINE 'A'	0.0' FROM EX. MH #	
232	WL STA. 0+244.0 LINE 'A'	0.0' FROM EX. MH #	
233	WL STA. 0+244.0 LINE 'A'	0.0' FROM EX. MH #	
234	WL STA. 0+244.0 LINE 'A'	0.0' FROM EX. MH #	

QUANTITIES			
ITEM	QUANTITY	AS-BUILT	SUPPLIER
8" WATER	94 LF		
8" WATER	259 LF		
8" BLOWOFF	1 EA		
FIRE HYDRANTS	1 EA		
1" WHC	678 LF		
3/4" WHC	28 LF		
8" SEWER	410 LF		
MANHOLES	3 EA		
4" SHC	222 LF		
4" DHC	80 LF		
4" STANDPIPE	16 LF		



- ### GENERAL NOTES
- APPROXIMATE LOCATION OF EXISTING MAINS ARE SHOWN. THE CONTRACTOR SHALL TAKE ALL NECESSARY PRECAUTIONS TO PROTECT EXISTING MAINS AND SERVICES AND MAINTAIN UNINTERRUPTED SUPPLY. ANY DAMAGE INCURRED SHALL BE REPAIRED IMMEDIATELY TO THE SATISFACTION OF THE ENGINEER AT THE CONTRACTOR'S EXPENSE.
 - ALL HORIZONTAL CONTROLS ARE BASED ON MARYLAND STATE COORDINATES.
 - ALL VERTICAL CONTROLS ARE BASED ON U.S.C. DATA.
 - ALL PIPE ELEVATIONS SHOWN ARE INVERT ELEVATIONS.
 - CLEAR ALL UTILITIES BY A MINIMUM OF 4'. CLEAR ALL POLES BY 2'-0" MINIMUM OR TUNNEL AS REQUIRED. THE OWNER HAS CONTACTED THE UTILITY COMPANY AND HAS MADE ARRANGEMENTS FOR BRACING OF POLES AS SHOWN ON THE DRAWINGS. IN THE EVENT THE CONTRACTOR'S WORK REQUIRES ADDITIONAL BRACING OF POLES, ANY COST INCURRED BY THE OWNER FOR THE BRACING OF ADDITIONAL POLES OR DAMAGES SHALL BE DEDUCTED FROM MONEY OWED TO THE CONTRACTOR. THE CONTRACTOR SHALL COORDINATE WITH THE UTILITY COMPANY TO SCHEDULE THE BRACING OF THE POLES.
 - FOR DETAILS NOT SHOWN ON THE DRAWINGS, AND FOR MATERIALS AND CONSTRUCTION METHODS, USE HOWARD COUNTY DESIGN MANUAL VOLUME IV, STANDARD SPECIFICATIONS AND DETAILS FOR CONSTRUCTION. THE CONTRACTOR SHALL HAVE A COPY OF VOLUME IV ON THE JOB.
 - WHERE TEST PITS HAVE BEEN MADE ON EXISTING UTILITIES, THEY ARE NOTED BY THE SYMBOL AT THE LOCATION OF THE TEST PIT. A NOTE OR NOTES CONTAINING THE RESULTS OF THE TEST PIT OR PIT IS INCLUDED ON THE DRAWINGS. EXISTING UTILITIES IN THE VICINITY OF THE PROPOSED WORK FOR WHICH TEST PITS HAVE BEEN MADE SHALL BE LOCATED BY THE CONTRACTOR TWO WEEKS IN ADVANCE OF CONSTRUCTION OPERATIONS AT THE CONTRACTOR'S EXPENSE.
 - CONTRACTOR SHALL NOTIFY THE FOLLOWING UTILITIES OR AGENCIES AT LEAST FIVE WORKING DAYS BEFORE STARTING WORK SHOWN ON THESE PLANS:
 CSP TELEPHONE.....1-800-257-7777
 STATE HIGHWAY ADMINISTRATION.....531-5533
 BALTIMORE GAS & ELECTRIC CO. CONTRACTOR SERVICES.....850-4820
 BALTIMORE GAS & ELECTRIC CO. UNDERGROUND DAMAGE CONTROL.....859-9004
 BALTIMORE GAS & ELECTRIC CO. TROUBLE SHOOTING.....298-9001
 MISS UTILITY.....1-559-0100
 COLONIAL PIPELINE CO.....795-1390
 BUREAU OF UTILITIES, HOWARD COUNTY DEPARTMENT OF PUBLIC WORKS.....313-4900
 - TREES ARE TO BE PROTECTED FROM DAMAGE TO MAXIMUM EXTENT. TREES LOCATED WITHIN THE CONSTRUCTION STRIP ARE NOT TO BE REMOVED OR DAMAGED BY THE CONTRACTOR. CONTRACTOR SHALL REMOVE TREES, STUMPS AND ROOTS ALONG LINE OF EXCAVATION AS DIRECTED BY THE ENGINEER. PAYMENT FOR SUCH REMOVAL SHALL BE INCLUDED IN THE UNIT PRICE BID FOR EXCAVATION AND BACKFILL.
 - PLACE REGULATION "MEN WORKING" AND WARNING SIGNS AS REQUIRED TO COMPLY WITH MARYLAND STATE HIGHWAY ADMINISTRATION MANUAL OF TRAFFIC CONTROL FOR HIGHWAY MAINTENANCE OPERATIONS.
 - ALL WATER MAINS TO BE CLASS 52 D.I.P. UNLESS OTHERWISE NOTED.
 - TOP OF ALL WATER MAINS TO HAVE A MINIMUM OF 3'-0" COVER UNLESS OTHERWISE NOTED.
 - VALVES ADJACENT TO TEES SHALL BE STRAPPED TO TEES.
 - BLOCK ALL FITTINGS WITH CONCRETE.
 - BURY LINE ELEVATIONS ON FIRE HYDRANTS SHALL BE SET TO THE ELEVATIONS ON THE DRAWINGS. ALL FIRE HYDRANTS SHALL BE STRAPPED AND BUTTRESSED WITH CONCRETE IN ACCORDANCE WITH STANDARD DETAILS. SOIL AROUND THE FIRE HYDRANT TO BE COMPACTED IN ACCORDANCE WITH SECTIONS 1000 AND 1005 OF THE GENERAL REQUIREMENTS FOR WATER AND SEWER.
 - ALL WATER HOUSE CONNECTIONS SHALL BE FOR AN INSIDE METER SETTING.
 - THE CONTRACTOR SHALL NOT CREATE ANY WATER MAIN VALVES ON THE EXISTING SYSTEM.
 - ALL D.I.P. FITTINGS SHALL BE IN ACCORDANCE WITH A.W.W.A. SPEC. C-153 DOUBLE IRON COMPACT FITTINGS 3"-12" FOR WATER AND OTHER LIQUIDS.
 - THE SERVICE CLAMPS ARE TO HAVE STAINLESS STEEL STRAPS.
 - ALL SEWER MAINS SHALL BE C.S.P.X., V.C.P.X. OR P.V.C. UNLESS OTHERWISE NOTED.
 - THE CONTRACTOR SHALL PROVIDE A JOINT IN ALL SEWER MAINS WITHIN 2'-0" OF EXTERIOR MANHOLE WALL.
 - ALL MANHOLES SHALL BE 4'-0" INSIDE DIAMETER UNLESS OTHERWISE NOTED.
 - MANHOLES SHOWN WITH 12" AND 18" WALLS ARE BRICK MANHOLES ONLY.
 - MANHOLES DESIGNATED W.T. IN PLAN AND PROFILE SHALL HAVE WATERTIGHT FRAME AND COVERS, STANDARD DETAIL G5.52 VOLUME IV WHERE WATERTIGHT MANHOLE IS USED, SET TOP OF FRAME 1'-0" ABOVE FINISHED GRADE.
 - HOUSE (S) WITH SYMBOL "C.N.S." INDICATES CELLAR CANNOT BE SERVED.
 - ALL WATER HOUSE CONNECTIONS SHALL HAVE A MINIMUM VERTICAL CLEARANCE OF 12" ABOVE ALL SANITARY SEWER CROSSINGS.
 - ALL SANITARY SEWER HOUSE CONNECTIONS SHALL HAVE A MINIMUM VERTICAL CLEARANCE OF 12" BELOW ALL WATER MAIN CROSSINGS.
 - PROFILE STATIONS SHALL BE ADJUSTED AS NECESSARY TO CONFORM TO PLAN DIMENSIONS.
 - NO PIPE SHALL BE LAD UNTIL LINES OF EXCAVATION HAVE BEEN BROUGHT TO SUBGRADE.

HOWARD SOIL CONSERVATION DISTRICT
 REVIEWED FOR HOWARD SOIL CONSERVATION DISTRICT
 AND MEETS TECHNICAL REQUIREMENTS

Jane M. Heller (s.s.) 6/26/91
 U.S. SOIL CONSERVATION SERVICE DATE

THIS PLAN IS APPROVED FOR SOIL EROSION AND SEDIMENT CONTROL BY THE HOWARD SOIL CONSERVATION DISTRICT.

John W. Hill 6/26/91
 HOWARD SOIL CONSERVATION DISTRICT DATE

SEDIMENT CONTROL MEASURES FOR THIS CONTRACT WILL BE IMPLEMENTED IN ACCORDANCE WITH SECTION 219 OF THE HOWARD COUNTY STANDARD SPECIFICATIONS AND AS PER ROAD CONSTRUCTION PLANS F-91-11c

DEPARTMENT OF PUBLIC WORKS
 HOWARD COUNTY, MARYLAND

Jane M. Heller (s.s.) 6/26/91
 DIRECTOR OF PUBLIC WORKS DATE

Robert J. Berman 6-13-91
 CHIEF, BUREAU OF UTILITIES DATE

John W. Hill 6/26/91
 CHIEF, LAND DEVELOPMENT DIVISION DATE

TRACY, SCHULTE &
 ASSOCIATES INC.

planning • engineering • surveying
 2400 Baltimore National Pike • Suite 410
 Ellicott City, Maryland 21043

John W. Hill 6/26/91
 DATE



DES: DRK					
DRN: DRK					
CHK: JME					
DATE: FEB 12, 1991	BY: NO.	REVISIONS	DATE	600 SCALE MAP NO. 47	BLOCK NO. 22

PLAN OF
 WATER & SEWER MAINS

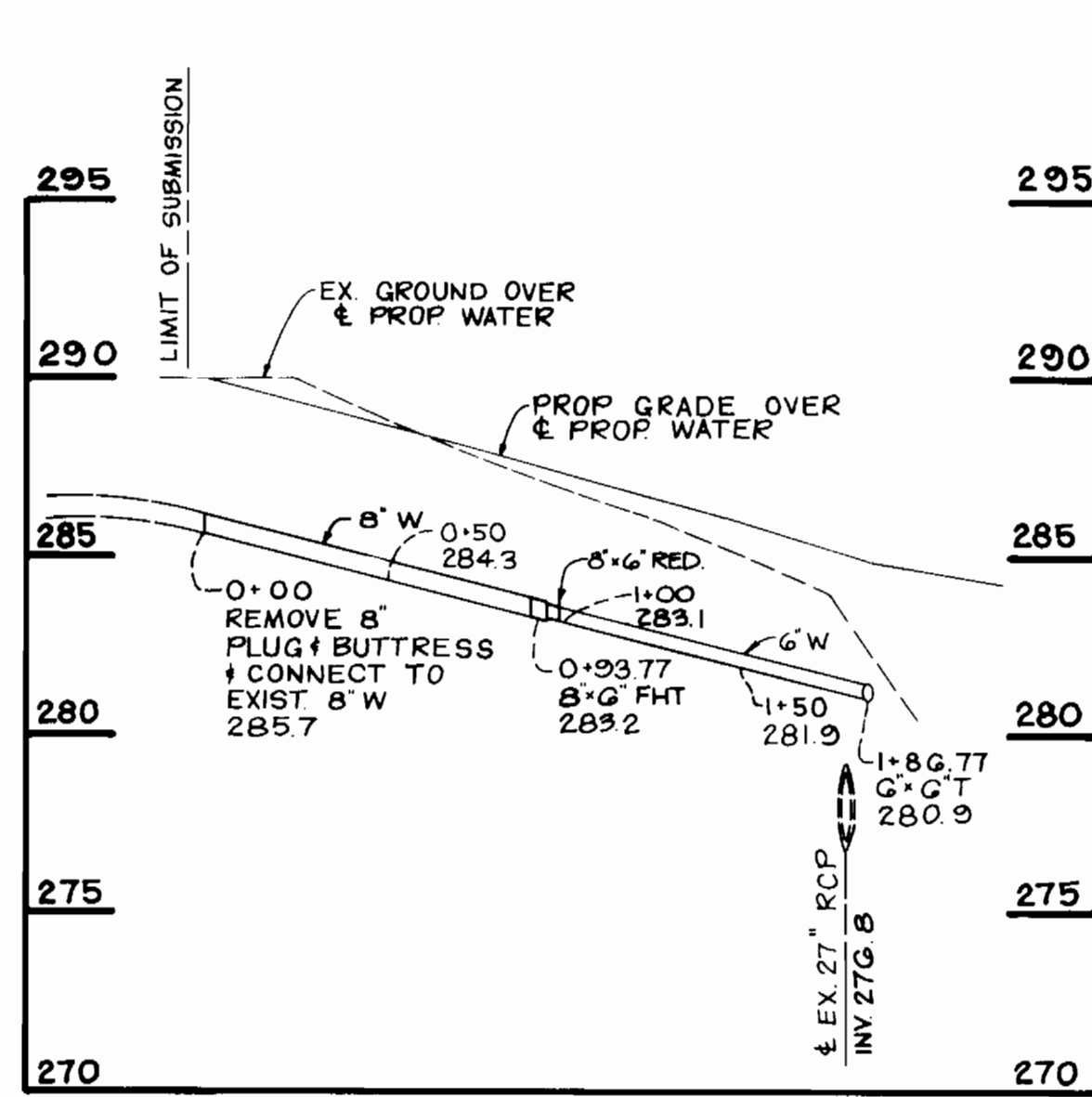
KING'S WOODS
 SECTION 2, AREA 2, PHASE 2
 LOTS 210-235
 ELECTION DISTRICT NO. 6
 TAX MAP 47

CONTRACT NO. 24-3133-D

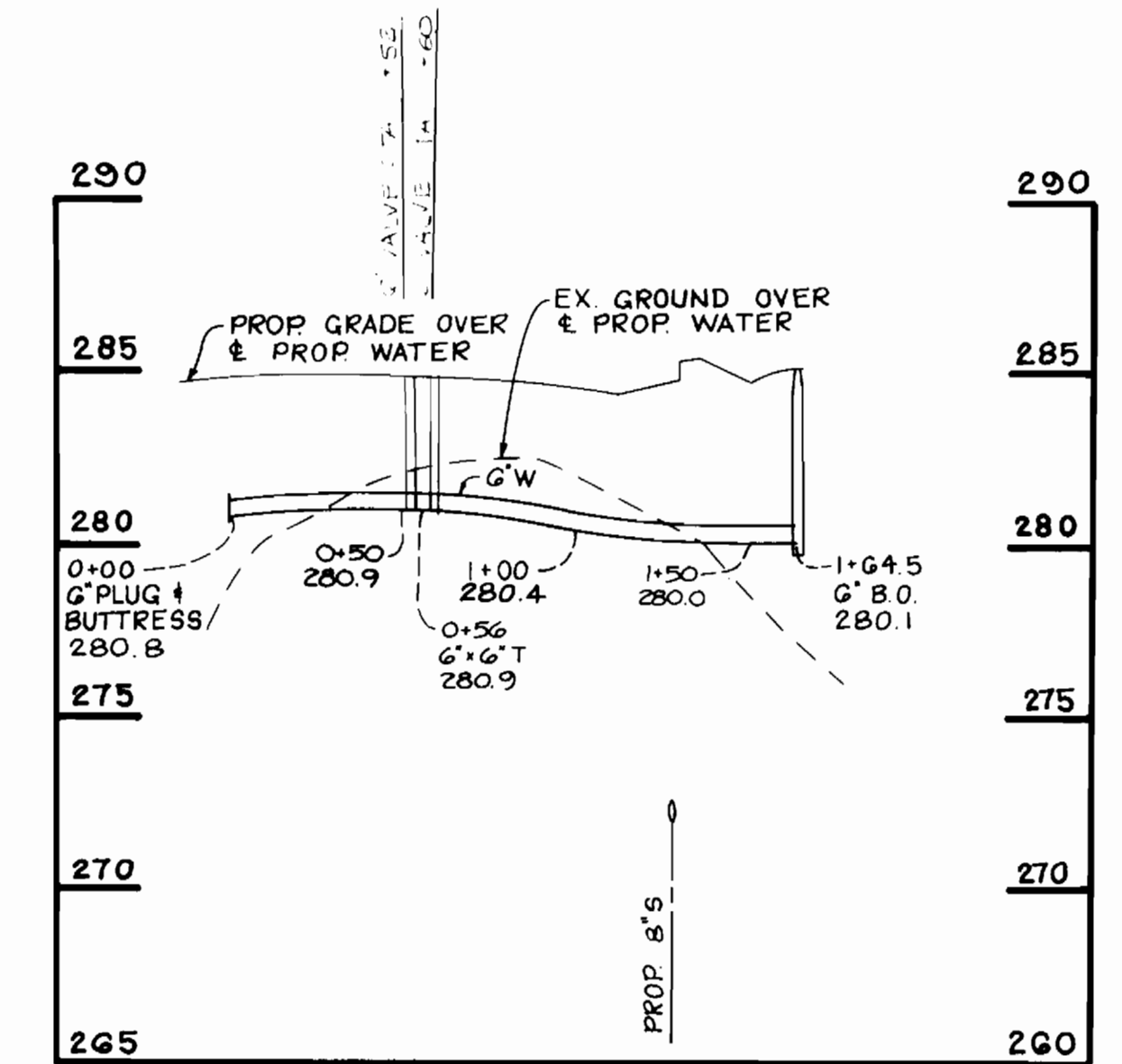
SCALE AS SHOWN

SHEET 1 OF 2

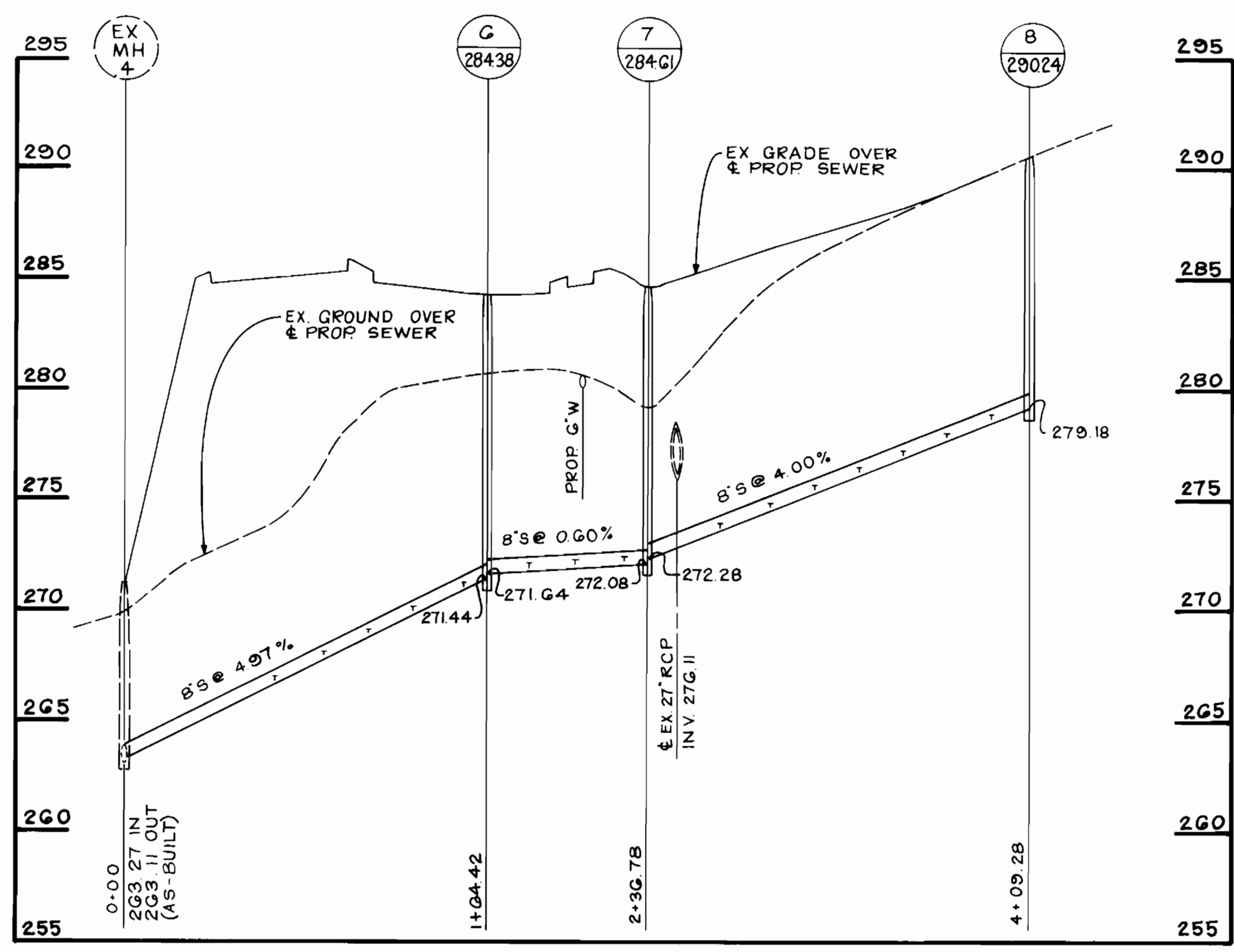
AS-BUILT 8-10-93



WATER LINE 'A'
SCALE: 1"=50' HORIZ. 1"=5' VERT.



WATER LINE 'B'
SCALE: 1"=50' HORIZ. 1"=5' VERT.



SEWER PROFILE
SCALE: 1"=50' HORIZ. 1"=5' VERT.

DEPARTMENT OF PUBLIC WORKS
HOWARD COUNTY, MARYLAND

[Signature] 6/26/91
DIRECTOR OF PUBLIC WORKS DATE

[Signature] 6-12-91
CHIEF, BUREAU OF UTILITIES DATE

[Signature] 6/26/91
CHIEF, BUREAU OF ENGINEERING DATE

[Signature]
CHIEF, LAND DEVELOPMENT DIVISION DATE

TRACY, SCHULTE &
ASSOCIATES INC.

planning • engineering • surveying
8480 Baltimore National Pike • Suite 418
Ellicott City, Maryland 21043

[Signature]
4/12/91

DES: DRK				
DRN: DRK				
CHK: JME				
DATE: FEB. 12, 1991	BY	NO.	REVISIONS	DATE

PROFILES OF
WATER & SEWER MAINS

600' SCALE MAP NO. 41 BLOCK NO. 22

KING'S WOODS
SECTION 2, AREA 2, PHASE 2
LOTS 210-235
ELECTION DISTRICT NO. 6
TAX MAP #7

CONTRACT NO. 24-3133-D

SCALE
AS
SHOWN

SHEET
2 OF 2