


ERNIE MAIER WAREHOUSE COMPLEX PUBLIC WATER & SEWER PLANS HOWARD COUNTY, MARYLAND CONTRACT NO. 24-3130-D

GENERAL NOTES

PART I

1. APPROXIMATE LOCATION OF EXISTING MAINS ARE SHOWN. THE CONTRACTOR SHALL TAKE ALL NECESSARY PRECAUTIONS TO PROTECT EXISTING MAINS AND SERVICES AND MAINTAIN UNINTERRUPTED SUPPLY. ANY DAMAGE INCURRED SHALL BE REPAIRED IMMEDIATELY TO THE SATISFACTION OF THE ENGINEER AT THE CONTRACTOR'S EXPENSE.
2. ALL HORIZONTAL CONTROLS ARE BASED ON MARYLAND STATE COORDINATES.
3. ALL VERTICAL CONTROLS ARE BASED ON USGS DATA.
4. ALL PIPE ELEVATIONS SHOWN ARE INVERT ELEVATIONS.
5. CLEAR ALL UTILITIES BY A MINIMUM OF 6'. CLEAR ALL POLES BY 2'-0" MINIMUM OR TUNNEL AS REQUIRED. THE OWNER HAS CONTRACTED THE UTILITY COMPANIES AND HAS MADE ARRANGEMENTS FOR BRACING OF POLES AS SHOWN ON DRAWINGS. IN THE EVENT THE CONTRACTOR'S WORK REQUIRES THE BRACING OF ADDITIONAL POLES, ANY COST INCURRED BY THE OWNER FOR BRACING OF ADDITIONAL POLES OR DAMAGES SHALL BE DEDUCTED FROM MONEY OWED THE CONTRACTOR. THE CONTRACTOR SHALL COORDINATE WITH THE UTILITY COMPANIES TO SCHEDULE THE BRACING OF THE POLES.
6. FOR DETAILS NOT SHOWN ON THE DRAWINGS, AND FOR MATERIALS AND CONSTRUCTION METHODS USE HOWARD COUNTY DESIGN MANUAL, VOLUME IV, STANDARD SPECIFICATIONS AND DETAILS FOR CONSTRUCTION, LATEST EDITION. THE CONTRACTOR SHALL HAVE A COPY OF VOLUME IV ON THE JOB.
7. WHERE TEST PITS HAVE BEEN MADE ON EXISTING UTILITIES, THEY ARE NOTED BY THE SYMBOL  AT THE LOCATION OF THE TEST PIT. A NOTE OR NOTES CONTAINING THE RESULTS OF THE TEST PIT OR PITS IS INCLUDED ON THE DRAWINGS. EXISTING UTILITIES IN THE VICINITY OF THE PROPOSED WORK FOR WHICH TEST PITS HAVE NOT BEEN DUG SHALL BE LOCATED BY THE CONTRACTOR TWO WEEKS IN ADVANCE OF CONSTRUCTION.
8. THE CONTRACTOR SHALL NOTIFY THE FOLLOWING UTILITY COMPANIES OR AGENCIES AT LEAST FIVE WORKING DAYS BEFORE STARTING WORK SHOWN THESE PLANS:

C. & P. TELEPHONE	410-597-8585
A.P.T.	410-865-3803
STATE HIGHWAY ADMINISTRATION	410-531-5533
BIGHE, CO. CONTRACTOR SERVICES	410-850-4620
BIGHE, CO. UNDER GROUND DAMAGE CONTROL	410-787-9088
MISS UTILITY	800-257-7777
COLONIAL PIPELINE CO.	410-776-1990
HOWARD COUNTY DEPARTMENT OF PUBLIC WORKS	410-313-4900
BUREAU OF UTILITIES	
9. TREES AND SHRUBS ARE TO BE PROTECTED FROM DAMAGE TO THE MAXIMUM EXTENT. TREES AND SHRUBS LOCATED WITHIN THE CONSTRUCTION STRIP ARE NOT TO BE REMOVED OR DAMAGED BY THE CONTRACTOR.
10. THE CONTRACTOR SHALL REMOVE TREES, STUMPS AND ROOTS ALONG LINE OF EXCAVATION. PAYMENT FOR SUCH REMOVAL SHALL BE INCLUDED IN THE UNIT PRICE BID FOR THE CONSTRUCTION OF THE MAIN.
11. THE CONTRACTOR SHALL NOTIFY THE BUREAU OF HIGHWAYS, HOWARD COUNTY, AT (410) 313-2450 AT LEAST FIVE WORKING DAYS BEFORE ANY OPEN CUT OF ANY COUNTY ROAD OR BORING/JACKING OPERATION IN COUNTY ROADS FOR LAYING WATERSEWER MAIN OR HOUSE CONNECTIONS. THE APPROVAL OF THESE DRAWINGS WILL CONSTITUTE COMPLIANCE WITH DPW REQUIREMENTS PER SECTION 10.31(A) OF THE HOWARD COUNTY CODE.

PART II - WATER

1. ALL WATER MAINS TO BE D.I.P. CLASS 52 UNLESS OTHERWISE NOTED.
2. TOPS OF ALL WATER MAINS TO HAVE A MINIMUM OF 3'-2" COVER UNLESS OTHERWISE NOTED.
3. VALVES ADJACENT TO TEES SHALL BE STRAPPED TO TEES.
4. ALL FITTINGS SHALL BE BUTTRESSED OR ANCHORED WITH CONCRETE IN ACCORDANCE WITH CONCRETE IN ACCORDANCE WITH THE STANDARD DETAILS UNLESS OTHERWISE PROVIDED FOR ON THE DRAWINGS.
5. FIRE HYDRANTS SHALL BE SET TO THE BURY LINE ELEVATIONS SHOWN ON THE DRAWINGS. ALL FIRE HYDRANTS SHALL BE RESTRAINED AND BUTTRESSED WITH CONCRETE IN ACCORDANCE WITH STANDARD DETAILS. SOIL AROUND FIRE HYDRANT SHALL BE COMPACTED IN ACCORDANCE WITH SECTION 1000 AND 1005 OF THE STANDARD SPECIFICATIONS.
6. THE CONTRACTOR SHALL NOT OPERATE ANY WATER MAIN VALVES ON THE EXISTING WATER SYSTEM.
7. ALL WATER HOUSE CONNECTIONS SHALL BE FOR INSIDE METER SETTING UNLESS OTHERWISE NOTED ON PLANS OR IN SPECIFICATIONS.
8. ALL WATER HOUSE CONNECTIONS SHALL BE A MINIMUM OF 1' WITH A 3/4" METER.
9. ALL BALL VALVES SHALL BE PLACED AT THE EDGE OF WATER EASEMENT.
10. DOMESTIC SERVICE FOR UNITS 4, 5, 16 & 17 TO BE SPLIT OFF FIRE SERVICE INSIDE SPRINKLER ROOM.

SDP NO. 00-145; FINAL PLAT NO.

THIS DEVELOPMENT IS APPROVED FOR SOIL EROSION AND SEDIMENT CONTROL BY THE HOWARD COUNTY SOIL CONSERVATION DISTRICT SDP-00-145

REVIEWED FOR HOWARD COUNTY SOIL CONSERVATION DISTRICT AND MEETS TECHNICAL REQUIREMENTS

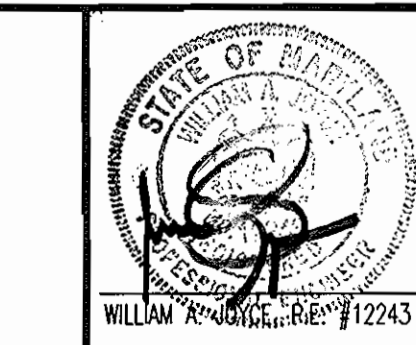
John R. Robertson 7/19/01
SOIL CONSERVATION DISTRICT DATE

Jim Myers 7/19/01
U.S. SOIL CONSERVATION DISTRICT DATE

DEPARTMENT OF PUBLIC WORKS
HOWARD COUNTY, MARYLAND
Robert B. ... 6-28-01
CHIEF, BUREAU OF UTILITIES DATE

DEPARTMENT OF PLANNING & ZONING
HOWARD COUNTY, MARYLAND
... 7/11/01
CHIEF, DEVELOPMENT ENGINEERING DIVISION DATE

JOYCE ENGINEERING CORPORATION
PROFESSIONAL ENGINEERS, PROFESSIONAL SURVEYORS
LAND PLANNING & CONSTRUCTION MANAGEMENT
10766 BALTIMORE AVENUE - THIN CHIMNEY'S OFFICE PARK
BELTSVILLE, MARYLAND 20705
TEL: (301) 595-4353 FAX: (301) 595-4650
1999 JOYCE ENGINEERING CORPORATION
PLOT DATE: 06/21/01
FILE NAME: P101010251223.DWG



DES: JEC					
DRN: HAL					
CHK: WAJ	KC1	AS-BUILT DATA ADDED	9-22-00		
DATE: NOV. 2000	BY NO.	REVISION	DATE:	600' SCALE MAP NO. 47	BLOCK NO. 23

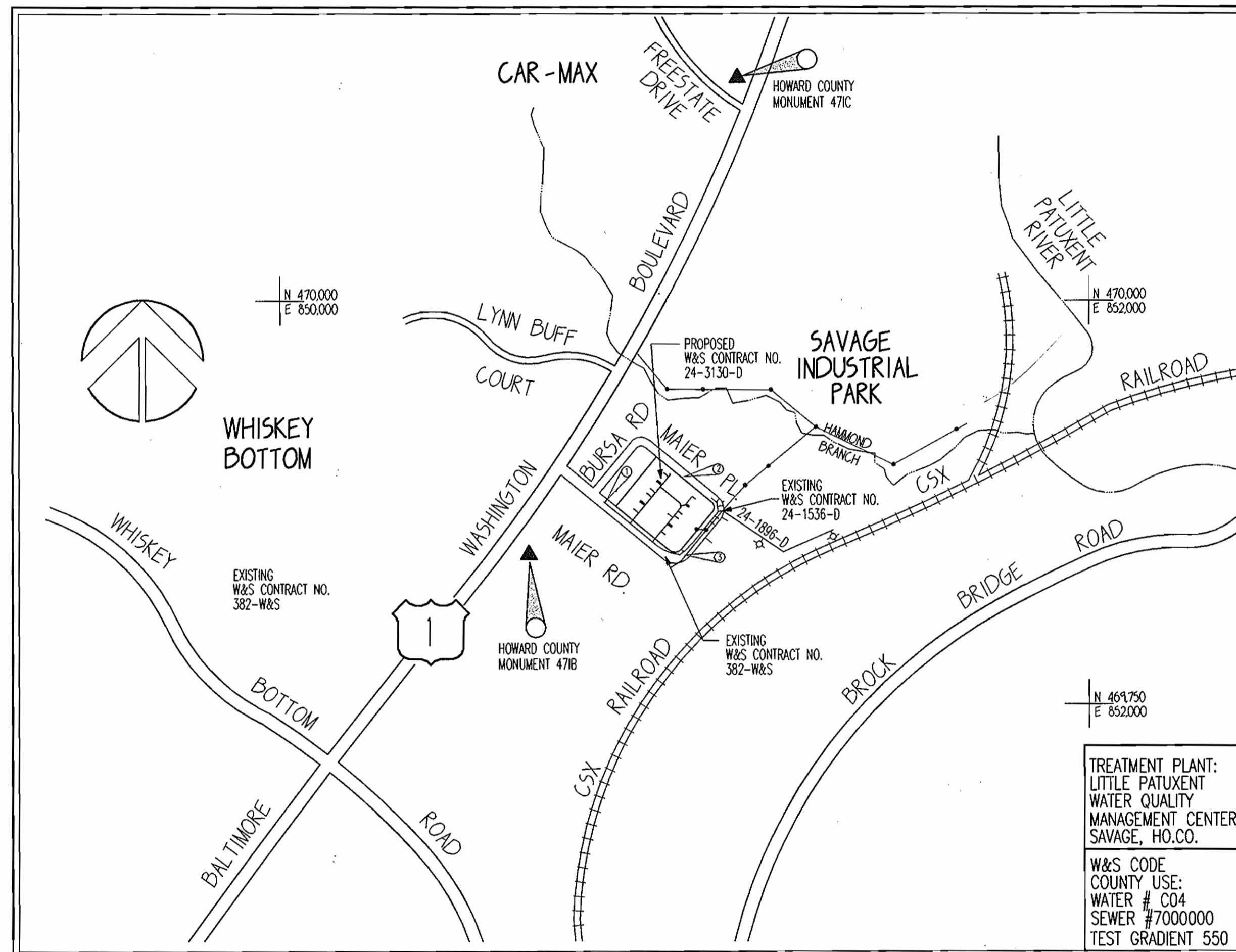
**TITLE SHEET
PLAN AND PROFILE OF A
WATER & SEWER EXTENSION**

**ERNIE MAIER WAREHOUSE COMPLEX
MAIER INDUSTRIAL PARK, SECTION 1 PARCEL C-5
CONTRACT: 24-3130-D**

TAX MAP: 47
6TH ELECTION DISTRICT

HOWARD COUNTY, MARYLAND

SCALE AS SHOWN
SHEET 1 OF 3



LOCATION MAP
PLAN SCALE: 1"=600'

ITEMS	QUANTITIES ESTIMATED	QUANTITIES	TYPE	MANUFACTURER / SUPPLIER
8" SEWER	80'	80'	SDR-35	BEZAIR ROAD SUPPLY
8" WATER	70'	70'	DIP CL-52	US PIPE
6" WATER	505'	505'	"	"
6" 1/8" HORIZONTAL BEND	3	3'	"	"
8"x8" TSV	2	2	C-207	FORD
8"x6" TEE	3	3	DIP CL-52	US PIPE
6"x6" TEE	3	3	"	"
6" CAP + BUTRESS	1	1	"	"
6" CAP + BUTRESS	1	1	"	"
6" VALVE	6	6	"	KENNEDY VALVE
FIRE HYDRANT	2	2	"	"
MANHOLE	1	1	"	ATLANTIC

QUANTITIES

NAME OF UTILITY CONTRACTOR: RAP CONTRACTING
SURVEY AND DRAFTING DIVISION AS-BUILT DATE: 8/26/08

TYPE OF BUILDING	WAREHOUSE
NO. OF LOTS/PARCELS	1
NO. OF WATER HOUSE CONNECTIONS	16
NO. OF SEWER HOUSE CONNECTIONS	16 PRIVATE
DRAINAGE AREA	HAMMOND BRANCH
TREATMENT PLANT	LITTLE PATUXENT WATER QUALITY MGMT. CENTER-SAVAGE, HOWARD CO.

CONTROL POINTS	
471B	- HOWARD COUNTY MONUMENT N. 532,036.878 E. 1,362,819.110
471C	- HOWARD COUNTY MONUMENT N. 529,701.576 E. 1,361,469.811

BENCH MARKS	
BENCH MARK #1	BONNET BOLT IN F.H. ELEV:180.01
BENCH MARK #2	60 PENNY NAIL IN TOP OF CURB. ELEV:175.41
BENCH MARK #3	BONNET BOLT IN F.H. ELEV:180.88

THESE REVISED CONSTRUCTION ORIGINAL MYLARS, 1 THRU 3, SUPERSEDE THE CONSTRUCTION PLANS PREVIOUSLY APPROVED AND SIGNED BY THE DIRECTOR OF PUBLIC WORKS ON 6-6-91

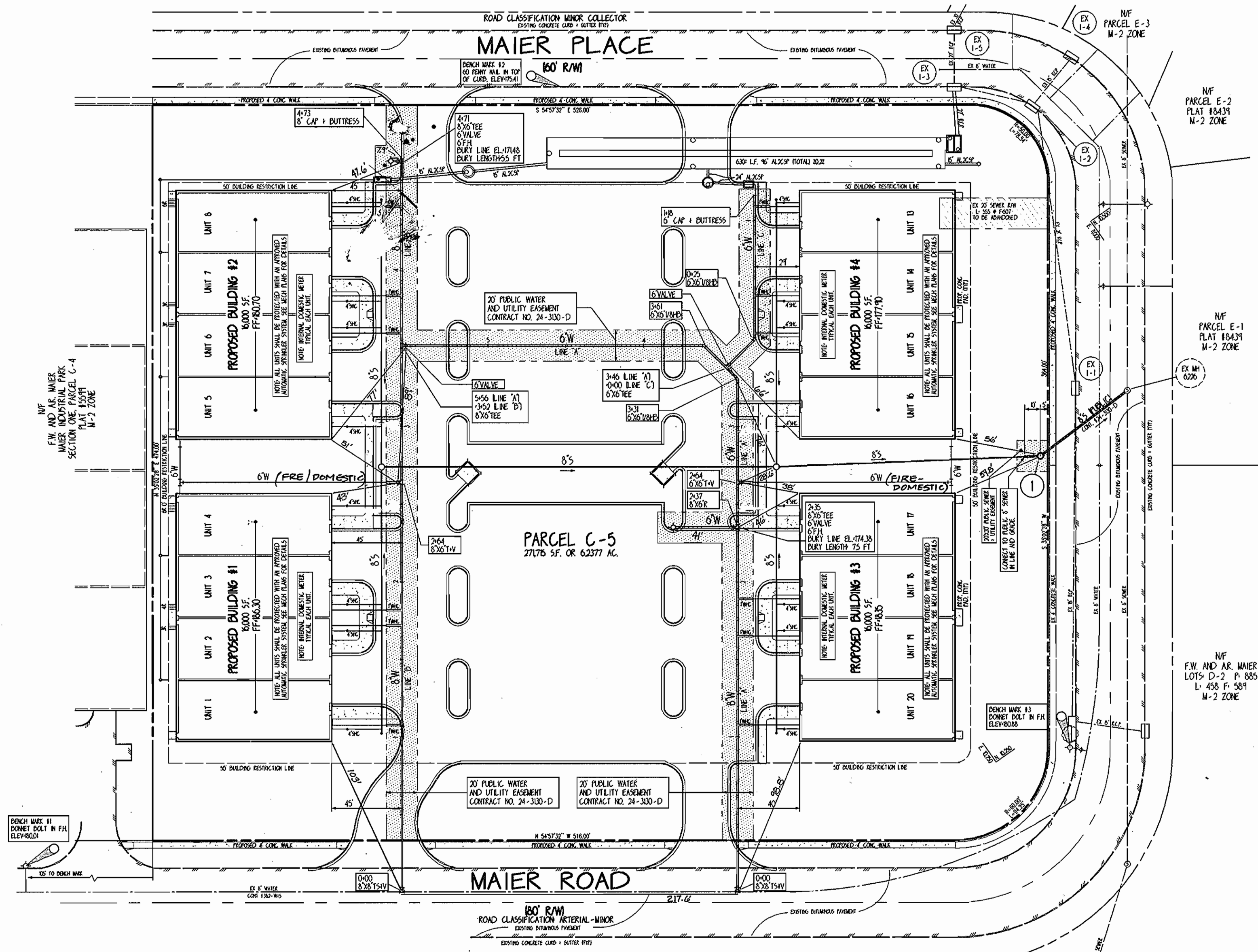
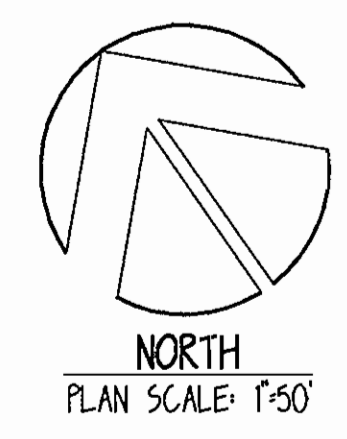
NOTE: EXISTING TOPOGRAPHIC SURVEY AND UNDERGROUND UTILITY INFORMATION AS SHOWN IS BASED UPON AVAILABLE RECORD INFORMATION AS PROVIDED BY THE OWNER/DESIGN/APPLICANT. ALL UNDERGROUND UTILITIES MUST BE FIELD VERIFIED BY CROSSING TEST PITS BY HAND PRIOR TO THE START OF ANY CONSTRUCTION ACTIVITY. JOYCE ENGINEERING CORPORATION ASSUMES NO LIABILITY FOR ACCURACY OF UTILITY INFORMATION PROVIDED BY OTHERS.

ELECTRONIC FILE DISCLAIMER:
 THE INFORMATION CONTAINED HEREON WAS PREPARED AS AN ELECTRONIC "CAD" FILE BY JOYCE ENGINEERING CORPORATION (JEC). JEC HAS TAKEN REASONABLE STEPS TO ASSURE THE ACCURACY OF THE INFORMATION CONTAINED IN THE ELECTRONIC FILE. HOWEVER, JEC CANNOT GUARANTEE THAT CHANGES AND/OR ALTERATIONS HAVE NOT BEEN MADE TO THE FILE. NO RELIANCE ON THE INFORMATION CONTAINED HEREON SHALL BE MADE UNLESS THE INFORMATION IS FIRST COMPARED TO THE PRINTED ORIGINAL DOCUMENT. JEC SHALL ASSUME NO LIABILITY OR RESPONSIBILITY AND DOES NOT GRANT ANY WARRANTY, EXPRESS OR IMPLIED, CONCERNING THE ACCURACY OF ANY INFORMATION THAT HAS BEEN TRANSMITTED OR RECEIVED VIA COMPUTER OR OTHER ELECTRONIC MEANS. IF NECESSARY, THIS DOCUMENT CONTAINS PREPARED INFORMATION AND SHALL NOT BE REPRODUCED, STORED IN A RETRIEVAL SYSTEM OR TRANSMITTED IN ANY FORM INCLUDING ELECTRONIC OR PHOTO REPRODUCTION WITHOUT THE EXPRESS WRITTEN PERMISSION OF JEC. BY ACCEPTANCE OF THIS DOCUMENT, THE RECIPIENT KNOWLEDGEBLY ACCEPTS THE ABOVE TERMS AND CONDITIONS.

BE BEFORE
 Before You Dig
 Call
MISS UTILITY
 Service Protection Center

MEMBER
 MISS UTILITY
 SERVICE PROTECTION CENTER

CALL TOLL FREE
 1-800-257-7777



AS-BUILT DATA

LOT	FROM	TO	DISTANCE	REMARKS
BLDG. 1	UNIT 1 WHC	UNIT 2 WHC	55.5'	
"	UNIT 1 WHC	UNIT 3 WHC	20.8'	
"	UNIT 2 WHC	"	25.1'	
BLDG. 2	UNIT 6 WHC	UNIT 7 WHC	23.7'	
"	"	UNIT 8 WHC	82.9'	
BLDG. 3	UNIT 20 WHC	UNIT 19 WHC	59.4'	
"	"	UNIT 18 WHC	81'	
BLDG. 4	UNIT 13 WHC	UNIT 14 WHC	57'	
"	"	UNIT 15 WHC	80'	

SDP NO. 00-145; FINAL PLAT NO.

THIS DEVELOPMENT IS APPROVED FOR SOIL EROSION AND SEDIMENT CONTROL BY THE HOWARD COUNTY SOIL CONSERVATION DISTRICT

REVIEWED FOR HOWARD COUNTY SOIL CONSERVATION DISTRICT AND MEETS TECHNICAL REQUIREMENTS

John R. Reuter 7/9/01
 SOIL CONSERVATION DISTRICT DATE

Jim Maguire 7/9/01
 SOIL CONSERVATION DISTRICT DATE

NOTE: FOR "BALL VALVE BOXES", USE CAST IRON BALL VALVE BOX (ROAD WAY BOX).

NOTE: FOR PROFILES, SEE SHEET 3 OF 3

THESE REVISED CONSTRUCTION ORIGINAL MYLARS, 1 THRU 3, SUPERSEDE THE CONSTRUCTION PLANS PREVIOUSLY APPROVED AND SIGNED BY THE DIRECTOR OF PUBLIC WORKS ON 6-6-91.

DEPARTMENT OF PUBLIC WORKS
 HOWARD COUNTY, MARYLAND

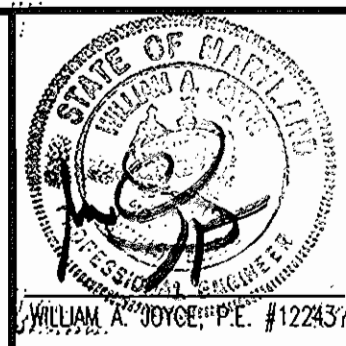
Robert B. ... 6-28-01
 CHIEF, BUREAU OF UTILITIES DATE

DEPARTMENT OF PLANNING & ZONING
 HOWARD COUNTY, MARYLAND

... 7/10/01
 CHIEF, DEVELOPMENT ENGINEERING DIVISION DATE

JOYCE ENGINEERING CORPORATION
 PROFESSIONAL ENGINEERS, PROFESSIONAL SURVEYORS
 LAND PLANNING & CONSTRUCTION MANAGEMENT
 10766 BALTIMORE AVENUE - TWIN CHIMNEYS OFFICE PARK
 BELTSVILLE, MARYLAND 20705
 TEL: (301) 595-4353 FAX: (301) 595-4650
 1999 JOYCE ENGINEERING CORPORATION

PLAT DATE: 06/23/01
 FILE NAME: E:\HD\04\0057\190271.DWG



DES: JEC				
DRN: HAL				
CHK: WAJ	KCI	AS-BUILT DATA ADDED	9-21-08	
DATE: FEB. 2000		COMBINED DOMESTIC & FIRE FOR UNITS 4, 5, 14 & 17	5-3-02	
BY: NO.		REVISION	DATE:	

8" & 6" WATER MAIN AND
 8" SEWER PLAN

600' SCALE MAP NO. 47 BLOCK NO. 23

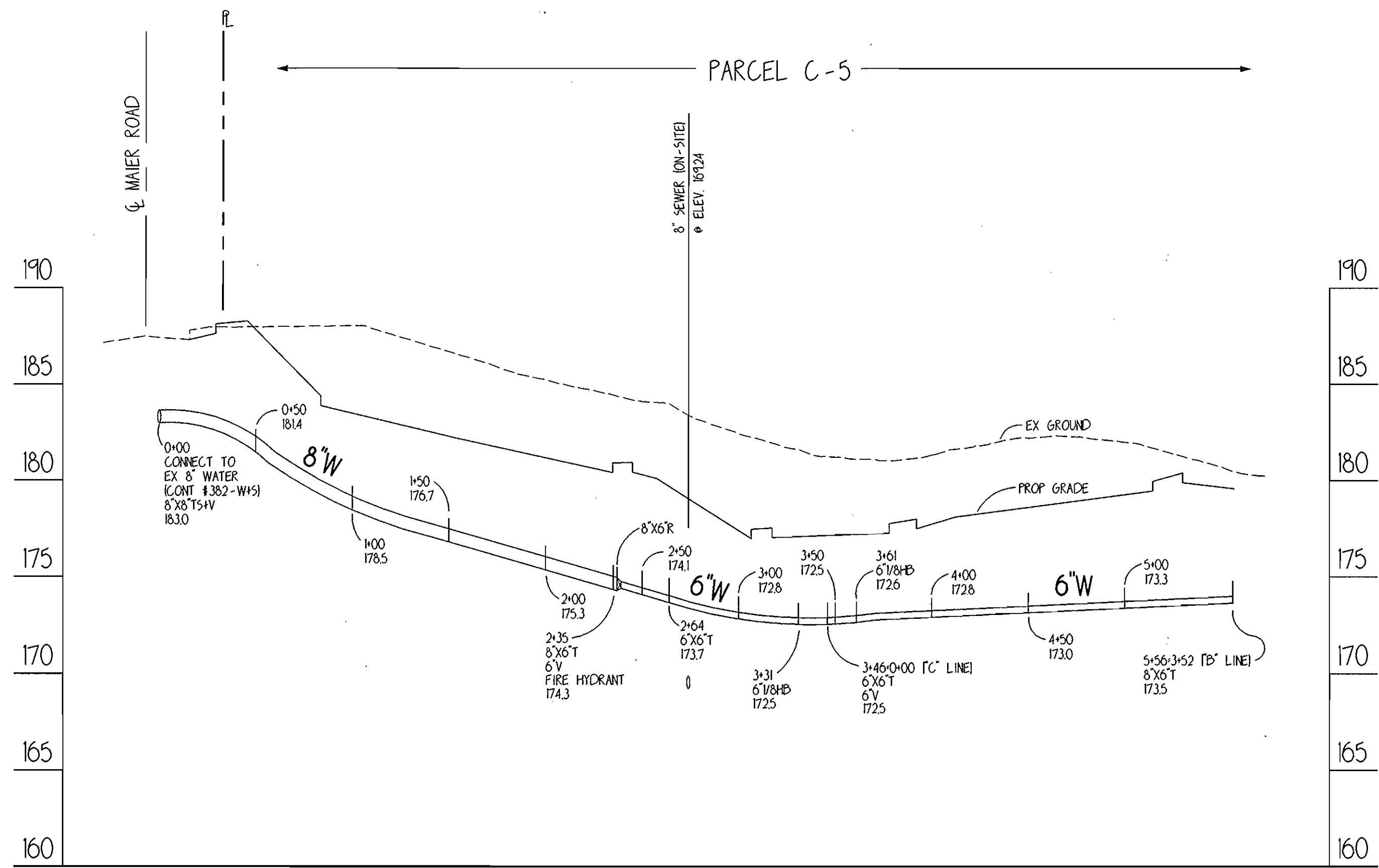
ERNIE MAIER WAREHOUSE COMPLEX
 MAIER INDUSTRIAL PARK, SECTION 1 PARCEL C-5
 CONTRACT: 24-3130-D

TAX MAP: 47
 6TH ELECTION DISTRICT

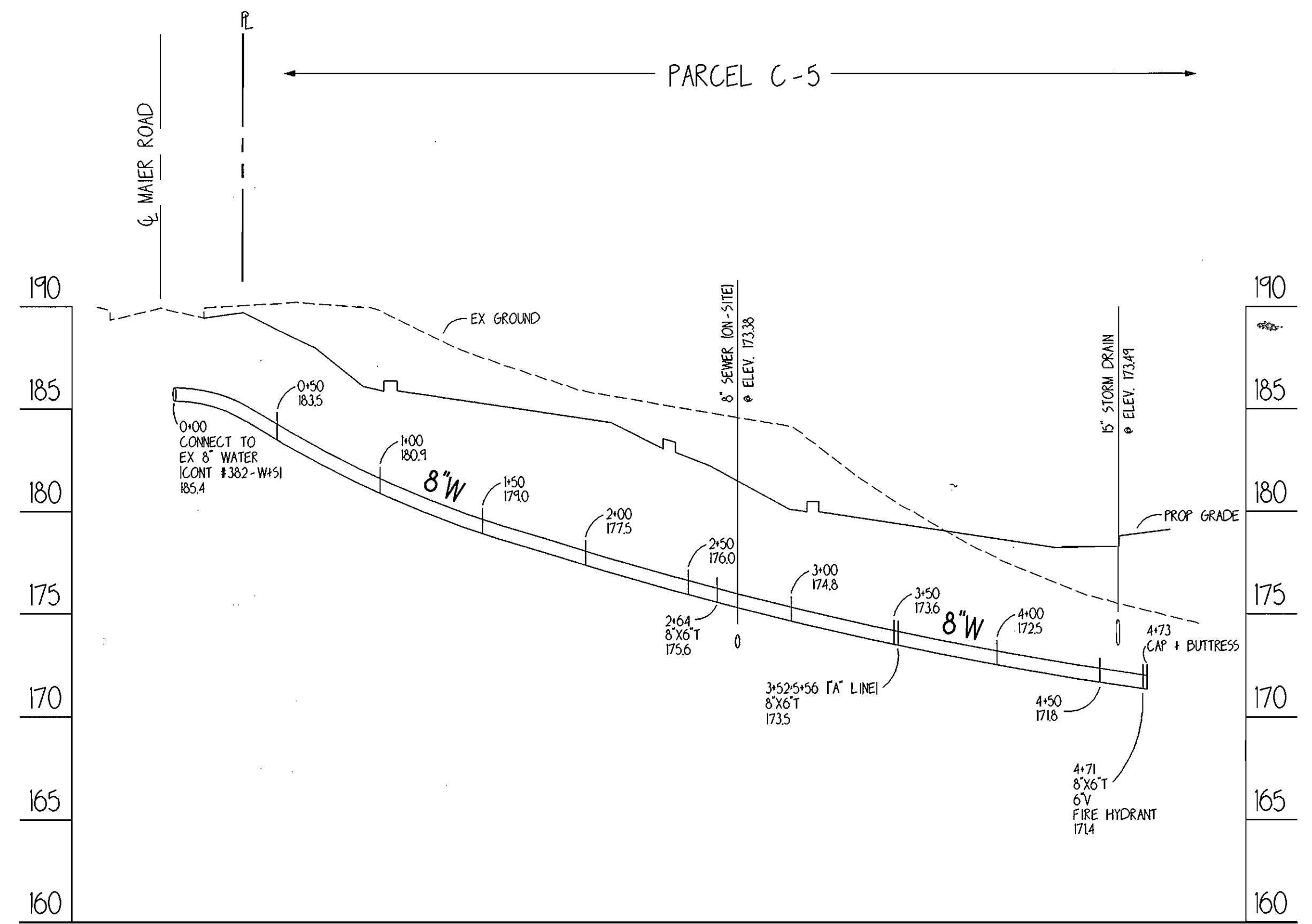
HOWARD COUNTY, MARYLAND

SCALE AS SHOWN

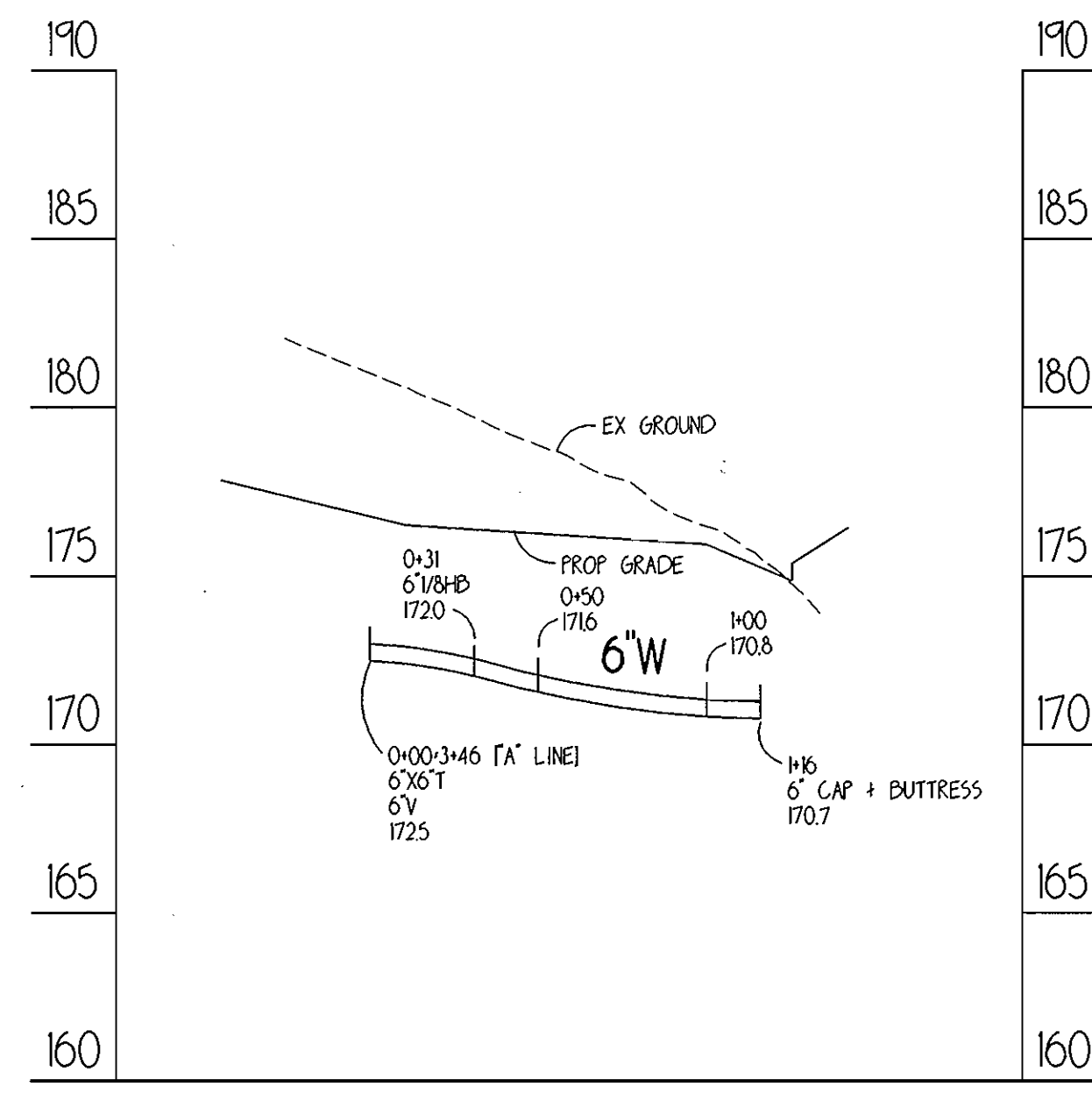
SHEET 2 OF 3



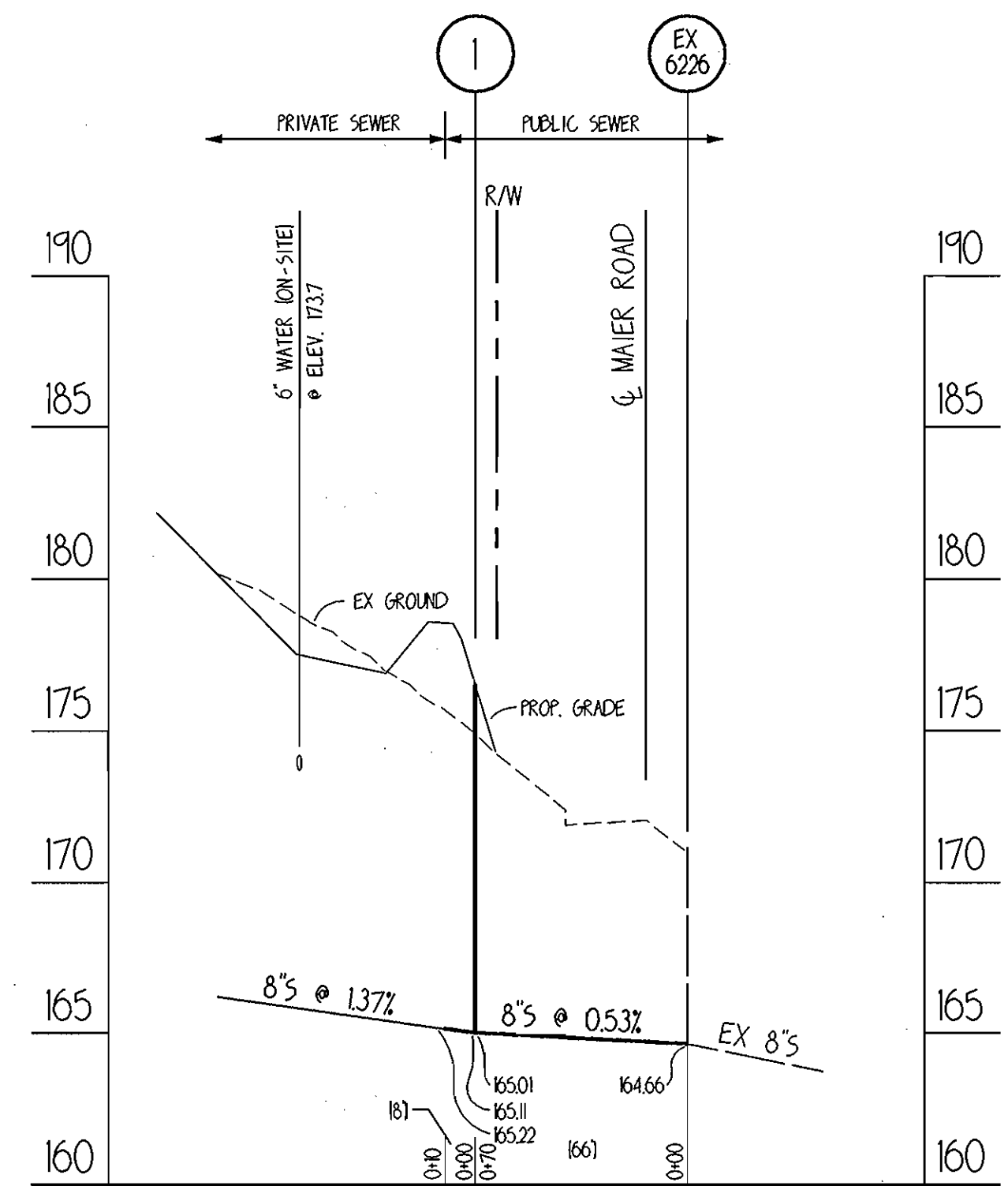
PROFILE SCALE: HORIZONTAL: 1" = 50'
VERTICAL: 1" = 5'



PROFILE SCALE: HORIZONTAL: 1" = 50'
VERTICAL: 1" = 5'



PROFILE SCALE: HORIZONTAL: 1" = 50'
VERTICAL: 1" = 5'



SDP NO. 00-145; FINAL PLAT NO.

THIS DEVELOPMENT IS APPROVED FOR SOIL EROSION AND SEDIMENT CONTROL BY THE HOWARD COUNTY SOIL CONSERVATION DISTRICT

REVIEWED FOR HOWARD COUNTY SOIL CONSERVATION DISTRICT AND MEETS TECHNICAL REQUIREMENTS

John R. Platan 7/1/01
SOIL CONSERVATION DISTRICT DATE

Jim Meyer 7/19/01
S.O. SOIL CONSERVATION DISTRICT DATE

DEPARTMENT OF PUBLIC WORKS
HOWARD COUNTY, MARYLAND
John R. Platan 6-28-01
CHIEF, BUREAU OF UTILITIES DATE

DEPARTMENT OF PLANNING & ZONING
HOWARD COUNTY, MARYLAND
John R. Platan 7/1/01
CHIEF, DEVELOPMENT ENGINEERING DIVISION DATE

JOYCE ENGINEERING CORPORATION
PROFESSIONAL ENGINEERS, PROFESSIONAL SURVEYORS
LAND PLANNING & CONSTRUCTION MANAGEMENT
10766 BALTIMORE AVENUE - TWIN CHIMNEY'S OFFICE PARK
BELTSVILLE, MARYLAND 20705
TEL: (301) 595-4353 FAX: (301) 595-4650
1999 JOYCE ENGINEERING CORPORATION
PL01 DATE: 05/20/01
FILE NAME: R2016/9/25/9057W2



DES: TAM	
DRN: TAM	
CHK: WAJ	
DATE: FEB. 2000	
BY: NO.	1
REVISION	COMBINED DOMESTIC & FIRE FOR UNITS 4, 5, 16 & 17
DATE:	5-3-02

8" & 6" WATER MAIN AND
8" SEWER PROFILES
600' SCALE MAP NO. 47 BLOCK NO. 25

ERNIE MAIER WAREHOUSE COMPLEX
MAIER INDUSTRIAL PARK, SECTION 1 PARCEL C-5
CONTRACT: 24-3130-D
TAX MAP: 47
6TH ELECTION DISTRICT
HOWARD COUNTY, MARYLAND

SCALE AS SHOWN
SHEET 3 OF 3

THESE REVISED CONSTRUCTION ORIGINAL MYLARS, 1 THRU 3, SUPERSEDE THE CONSTRUCTION PLANS PREVIOUSLY APPROVED AND SIGNED BY THE DIRECTOR OF PUBLIC WORKS ON 6-6-91