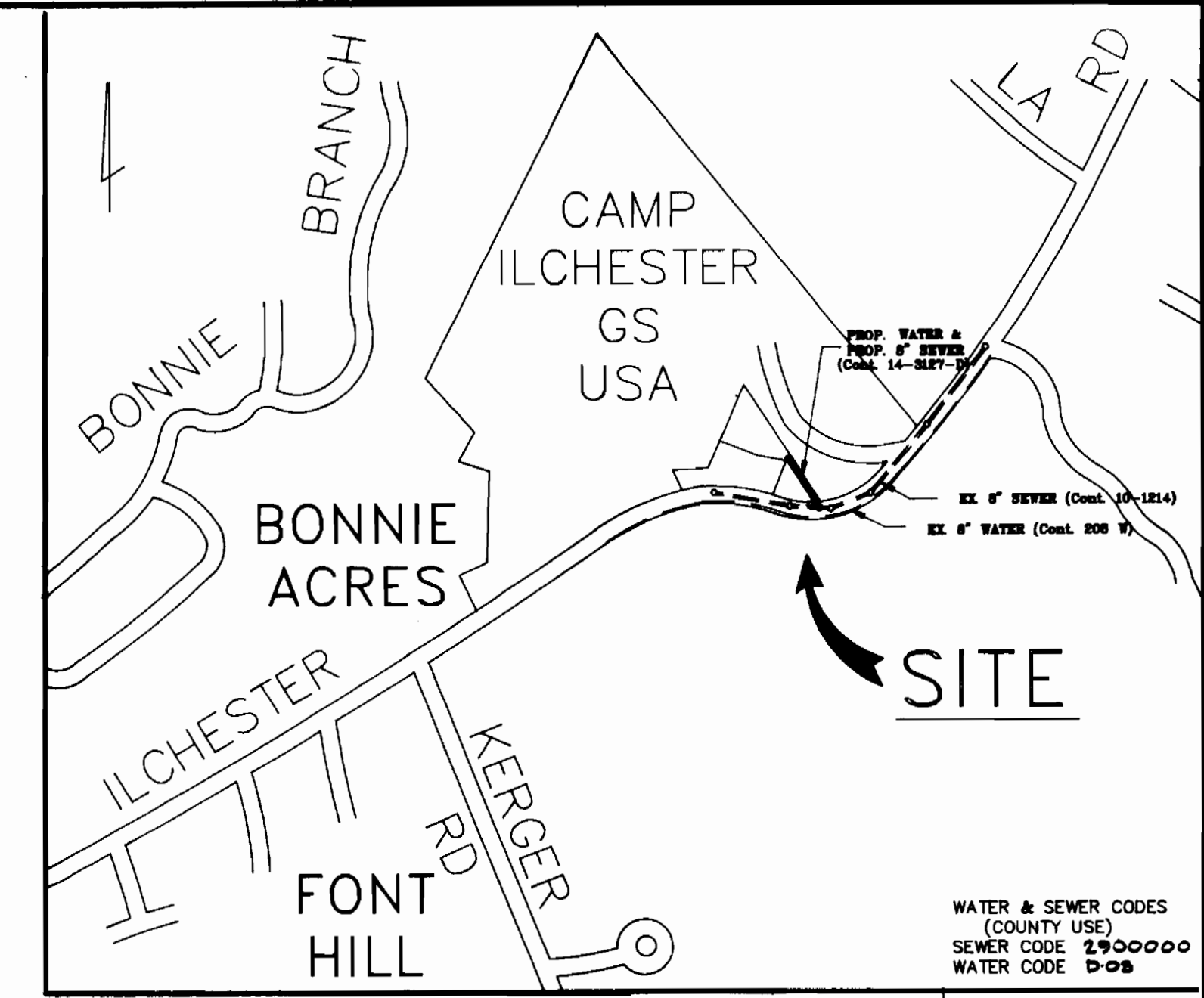
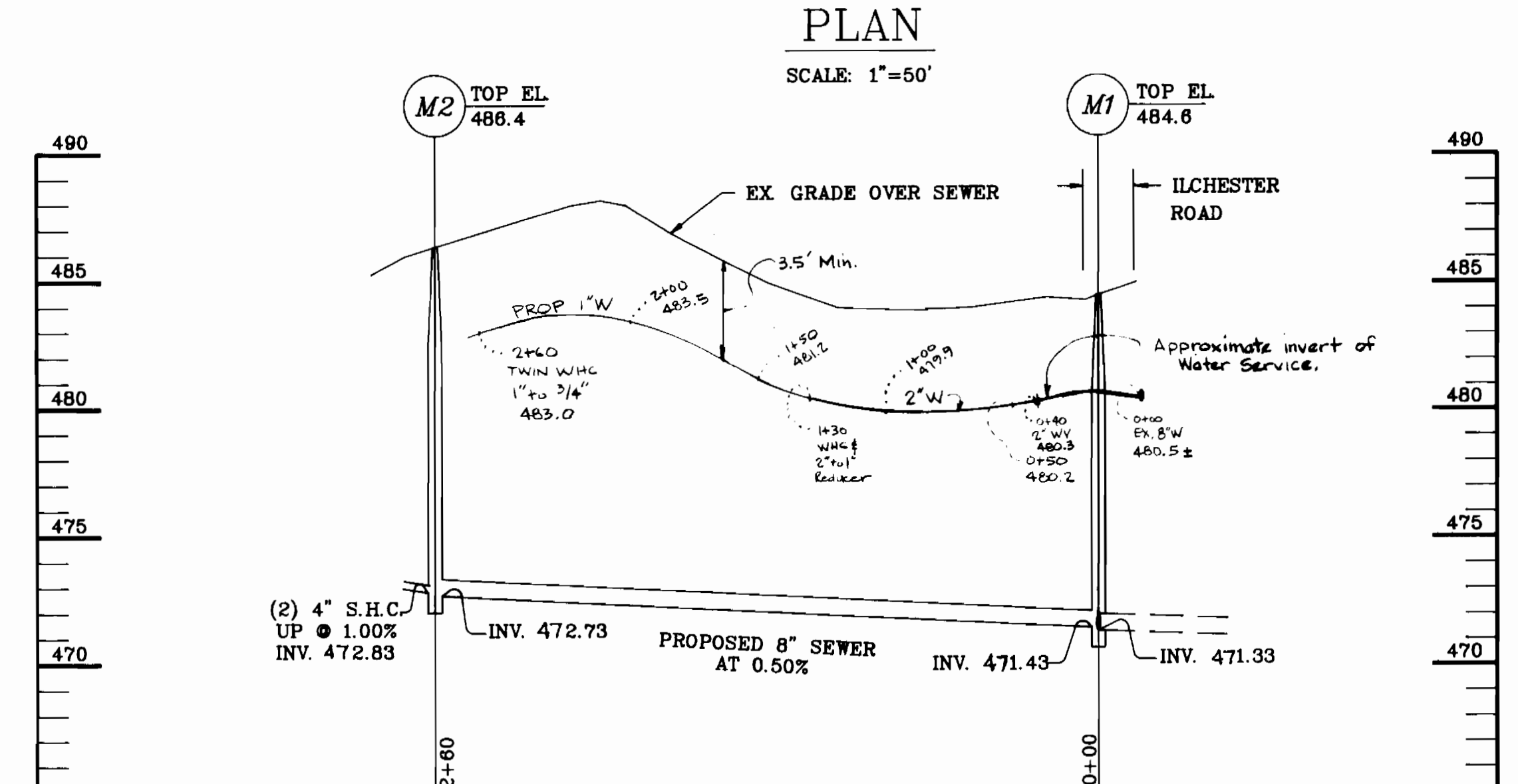
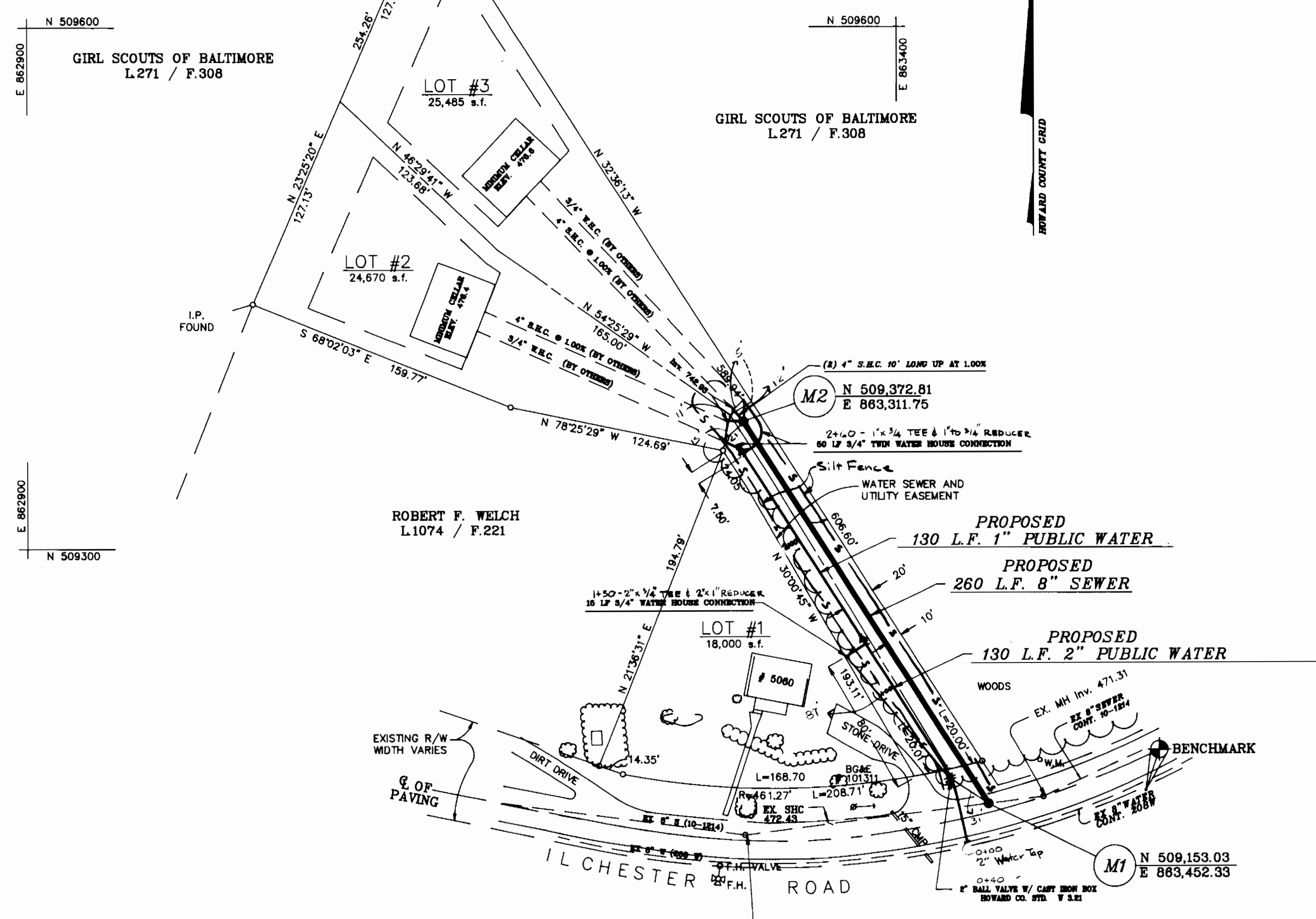


GENERAL NOTES

- APPROXIMATE LOCATION OF EXISTING MAINS ARE SHOWN. THE CONTRACTOR SHALL TAKE ALL NECESSARY PRECAUTIONS TO PROTECT EXISTING MAINS AND SERVICES AND MAINTAIN UNINTERRUPTED SUPPLY. ANY DAMAGE INCURRED SHALL BE REPAIRED IMMEDIATELY TO THE SATISFACTION OF THE ENGINEER, AT THE CONTRACTOR'S EXPENSE.
 - ALL HORIZONTAL CONTROLS ARE BASED ON MARYLAND STATE COORDINATES.
 - ALL VERTICAL CONTROLS ARE BASED ON U.S.G.S. DATUM.
 - ALL PIPE ELEVATIONS ARE INVERT ELEVATIONS.
 - CLEAR ALL UTILITIES BY A MINIMUM OF 6". CLEAR ALL POLES BY 2'-0" MINIMUM OR TUNNEL AS REQUIRED. ANY COST INCURRED TO THE CONTRACTOR FOR TUNNELING OR BRACING AT POLES SHALL BE INCLUDED IN THE UNIT PRICES BID FOR CONSTRUCTION OF THE MAIN.
 - FOR DETAILS NOT SHOWN ON THE DRAWINGS AND FOR MATERIALS AND CONSTRUCTION METHODS, USE HOWARD COUNTY DESIGN MANUAL VOLUME IV, "STANDARD SPECIFICATIONS AND DETAILS FOR CONSTRUCTION." THE CONTRACTOR SHALL HAVE A COPY OF VOLUME IV ON THE JOB.
 - EXISTING UTILITIES IN THE VICINITY OF THE PROPOSED WORK FOR WHICH TEST PITS HAVE NOT BEEN DUG SHALL BE LOCATED BY THE CONTRACTOR TWO WEEKS IN ADVANCE OF CONSTRUCTION OPERATIONS AT HIS OWN EXPENSE.
 - CONTRACTOR SHALL NOTIFY THE FOLLOWING UTILITIES OR AGENCIES AT LEAST FIVE WORKING DAYS BEFORE STARTING WORK SHOWN ON THESE PLANS.
 - STATE HIGHWAY ADMINISTRATION 681-6633
 - BALTIMORE GAS AND ELECTRIC COMPANY-CONTRACTOR SERVICES 661-2585
 - UNDERGROUND DAMAGE CONTROL 234-6621
 - TROUBLE SHOOTING 296-9013
 - MES UTILITY 1-558-0100
 - COLONIAL PIPELINE CO. 796-1990
 - BUREAU OF UTILITIES, HOWARD COUNTY DEPT. OF PUBLIC WORKS 313-4900
- TREES AND SHRUBS ARE TO BE PROTECTED FROM DAMAGE TO THE MAXIMUM EXTENT. TREES AND SHRUBS LOCATED WITHIN THE CONSTRUCTION STRIPS ARE NOT TO BE REMOVED OR DAMAGED BY THE CONTRACTOR.
 - CONTRACTOR SHALL REMOVE TREES STUMPS AND ROOTS ALONG THE LINE OF EXCAVATION.
 - PLACE REGULATION "MEN WORKING" AND WARNING SIGNS AS REQUIRED TO COMPLY WITH MARYLAND STATE HIGHWAY ADMINISTRATION "MANUAL OF TRAFFIC CONTROL FOR HIGHWAY CONSTRUCTION AND MAINTENANCE OPERATIONS."
 - ALL WATER MAINS TO BE CLASS B2 D.I.P. UNLESS OTHERWISE NOTED.
 - TOP OF ALL WATER MAINS TO HAVE A MINIMUM OF 3'-6" COVER UNLESS OTHERWISE NOTED.
 - VALVES ADJACENT TO TREES SHALL BE STRAPPED TO TREES.
 - BLOCK ALL FITTINGS WITH CONCRETE.
 - ALL WATER HOUSE CONNECTIONS (WHC) SHALL BE FOR INSIDE METER SETTING.
 - THE CONTRACTOR SHALL NOT OPERATE ANY WATER MAIN VALVES ON THE EXISTING SYSTEM.
 - ALL SEWER MAINS SHALL BE C.S.P.X., R.C.S.P., V.C.P.X., OR PVC UNLESS OTHERWISE NOTED.
 - THE CONTRACTOR SHALL PROVIDE A JOINT IN ALL SEWER MAINS WITHIN 2' OF AN EXTERIOR MANHOLE WALL.
 - ALL MANHOLES MUST BE 4'-0" IN DIAMETER, UNLESS OTHERWISE NOTED.
 - DISTURBED AREA IS LESS THAN 5,000 SQUARE FEET

SEQUENCE OF CONSTRUCTION

- OBTAIN ALL APPROPRIATE PERMITS
- NOTIFY HOWARD COUNTY DEPARTMENT OF PUBLIC WORKS (see general note 10).
- STAKE OUT AREA FOR CLEARING.
- CLEAR AREA TO BE DISTURBED
- CONSTRUCT SEWER AND WATER LINE PLACING EXCAVATED MATERIAL ON HIGH (UPHILL) SIDE OF TRENCH. BACKFILL AND STABILIZE TRENCH AT THE CLOSE OF WORK EACH DAY.
- UPON COMPLETION OF WORK, FULLY STABILIZE ALL DISTURBED AREAS WITH SEED AND MULCH.



VICINITY MAP
SCALE: 1"=600'

BENCHMARK: Howard County Monument 2844005-R, Top of 3/4" iron bar on south side of Ilchester Road 8± off of paving.

WATER & SEWER CODES (COUNTY USE)	NO. OF LOTS	3
SEWER CODE 2500000	NO. OF WHC	3
WATER CODE 008	NO. OF SHC	2
	DRAINAGE AREA:	PATAPSCO

ITEM	ESTIMATE	AS-BUILT	MATERIAL/SUPPLIER
8" SEWER MAIN	260 L.F.	260.00'	W. H. ...
ST'D A MANHOLE	2 EACH	2	W. H. ...
4" S.H.C.	20 L.F.	20.00'	W. H. ...
1" WATER	130 L.F.	130.00'	W. H. ...
2" WATER	130 L.F.	130.00'	W. H. ...
2" VALVE & BOX	1 EACH	1	W. H. ...
3/4" W.H.C.	65 L.F.	75.00'	W. H. ...

6-8-91	1	COUNTY COMMENTS DATED 5-28-91
DATE	NO.	DESCRIPTION

SEDIMENT CONTROL MEASURES FOR THIS CONTRACT WILL BE IMPLEMENTED IN ACCORDANCE WITH SECTION 219 OF THE STANDARD SPECIFICATIONS

REVIEWED FOR HOWARD SOIL CONSERVATION DISTRICT AND MEETS TECHNICAL REQUIREMENTS
John R. Heinrichs 6/26/91

THIS DEVELOPMENT PLAN IS APPROVED FOR SOIL EROSION AND SEDIMENT CONTROL BY THE HOWARD SOIL CONSERVATION DISTRICT
John R. Heinrichs 6/26/91

DEPARTMENT OF PUBLIC WORKS
HOWARD COUNTY, MARYLAND
DIRECTOR OF PUBLIC WORKS DATE 6/28/91
CHIEF-BUREAU OF UTILITIES DATE 6/29/91

PREPARED BY:
JOHN R. HEINRICHS, P.E.
5124 S. ROLLING ROAD
RELAY, MARYLAND 21227
(301)247-4036 FAX 247-9397

CONTRACT NO. 14-3127-D
PLAN AND PROFILE
8" SEWER EXTENTION
& PUBLIC WATER SERVICE

TAMALAVIZC MINOR SUBDIVISION
F-91-45
TAX MAP 31 PARCEL 370
1st ELECTION DISTRICT HOWARD COUNTY, MARYLAND
SCALE: AS SHOWN
DRAWING NO. 1 of 1

