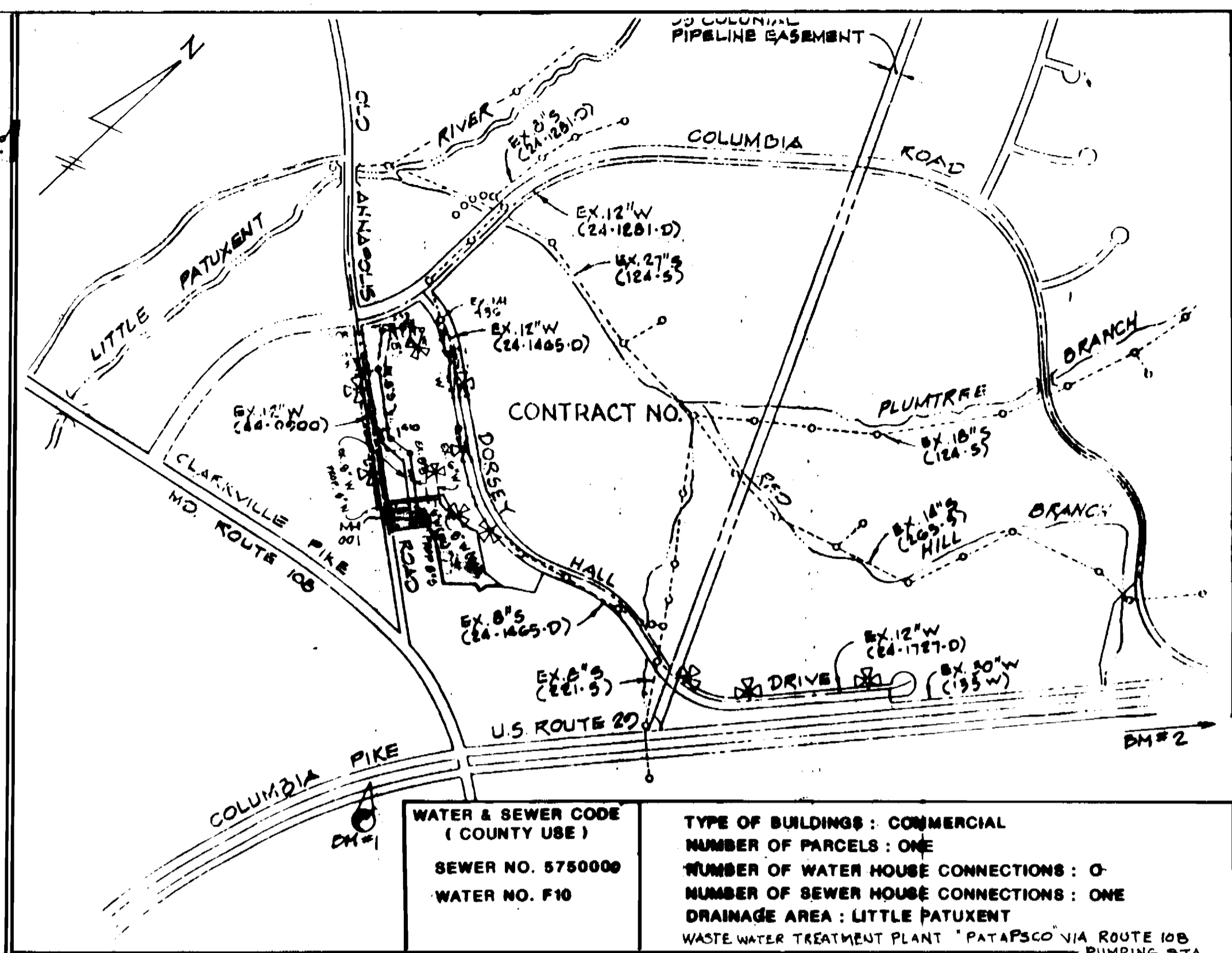


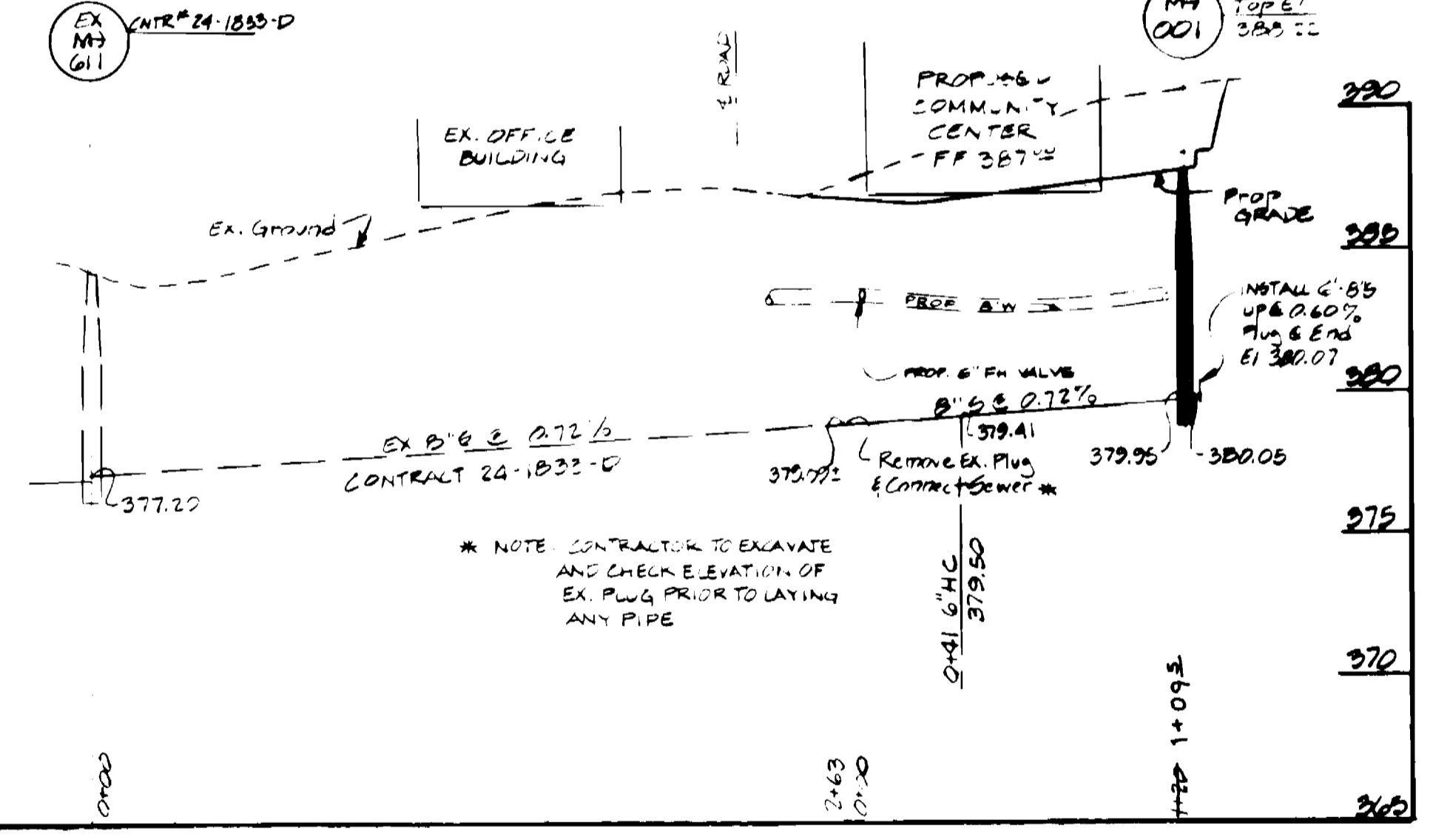
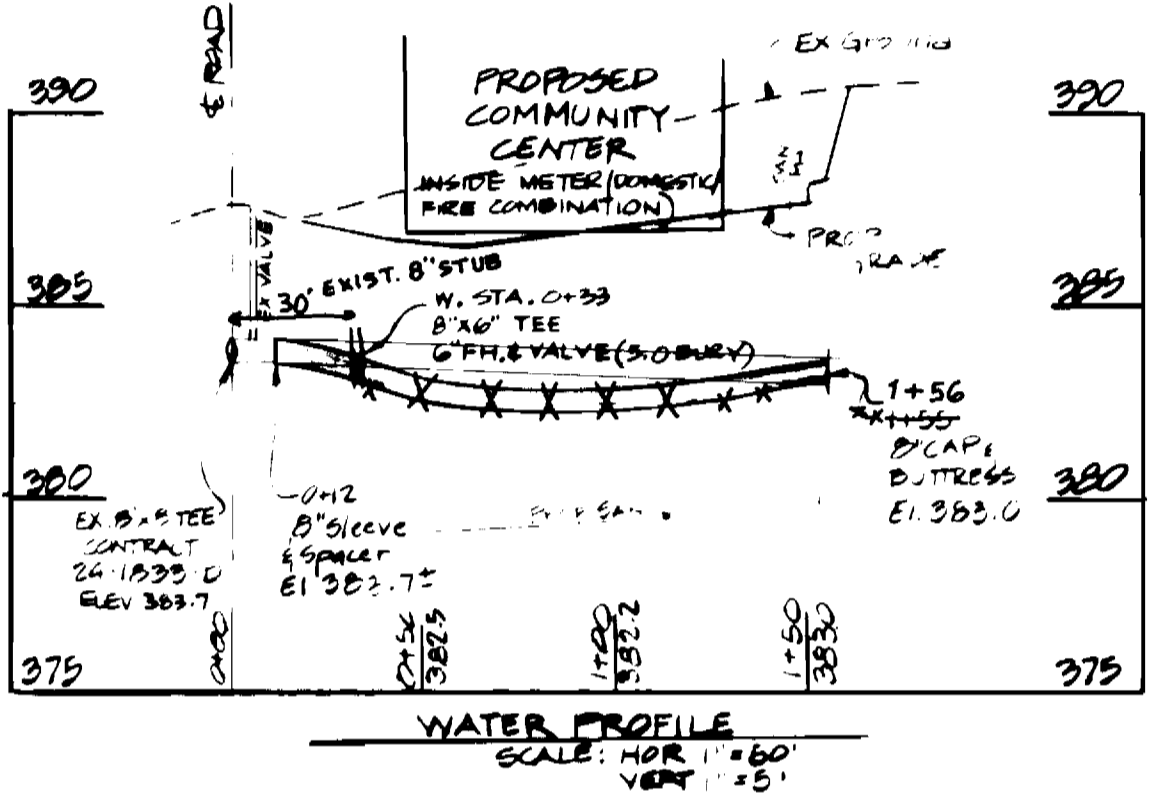
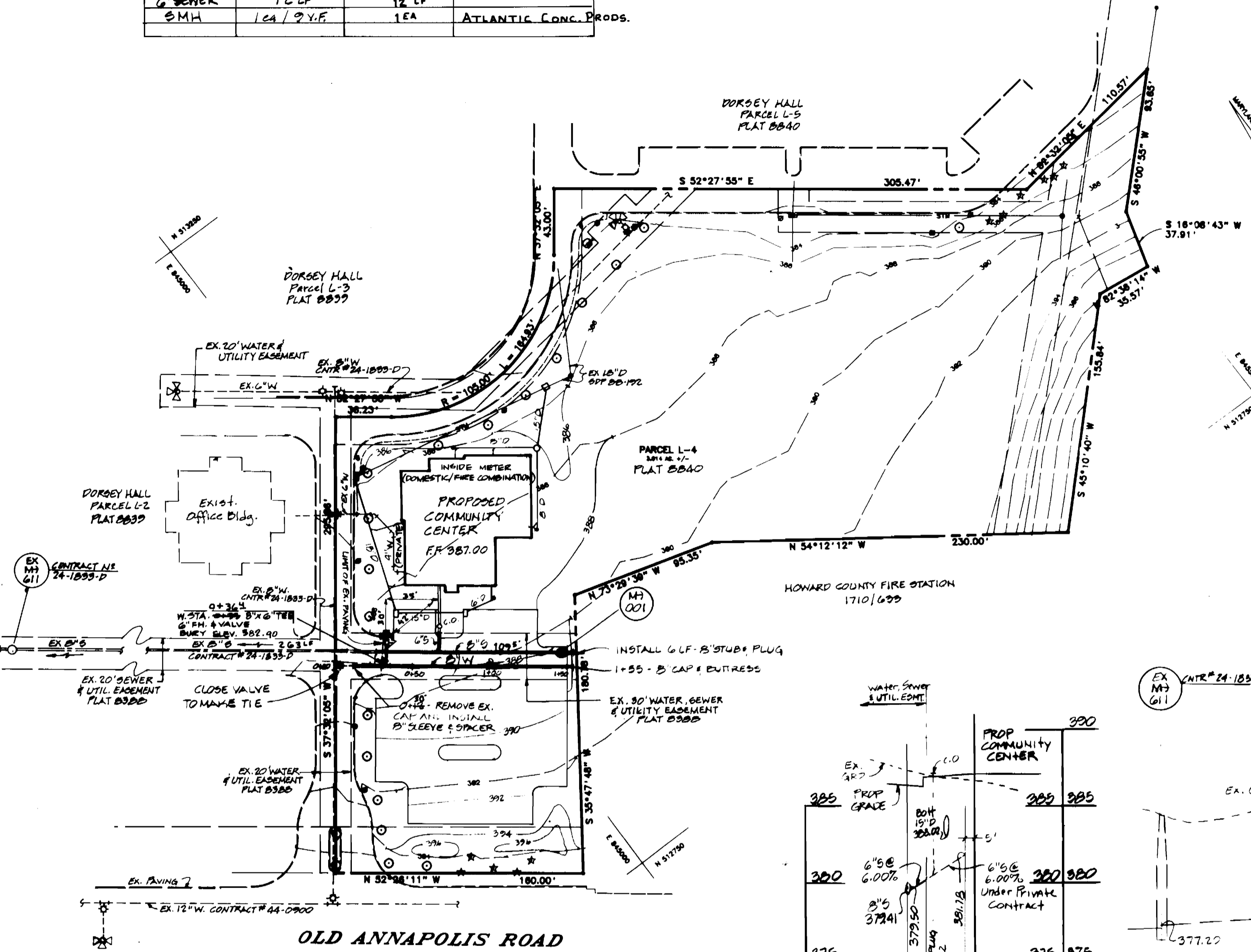
QUANTITIES			
ITEM	ESTIMATED	AS BUILT	MATERIAL/SUPPLIER
8" D.I.P. W.	143 LF	143 LF	
FIRE HYDRANT	1EA. (5.0' BURY)	1 EA	
6" F.H. VALVE	1EA.	1 EA	
8" SEWER	126 LF	113.5 LF	
6" SEWER	12 LF	12 LF	
SMH	1EA / 2 Y.F.	1EA	ATLANTIC CONC. PRODS.

BM#1 STATION IS LOCATED IN THE MEDIAN STRIP 500' SOUTH OF INTERSECTION WITH RTE. 29 / RTE. 106 OFF THE S.B.L. OF RTE. 29

BM#2 CONC. MAN. @ SURF 30'± BE OF SE EDGE S BOUND LANE US#20 893'± BN OF SW EDGE OF CROSSOVER. CENTERED BETWEEN LANES 13'± SW OF A LINE PERPENDICULAR TO LANES THRU C & P # 85



WATER & SEWER CODE (COUNTY USE)	TYPE OF BUILDINGS: COMMERCIAL
SEWER NO. 5750000	NUMBER OF PARCELS: ONE
WATER NO. F10	NUMBER OF WATER HOUSE CONNECTIONS: 0
	NUMBER OF SEWER HOUSE CONNECTIONS: ONE
	DRAINAGE AREA: LITTLE PATUXENT
	WASTE WATER TREATMENT PLANT: PATAPSCO VIA ROUTE 106 PUMPING STA.



NOTE: EXISTING UTILITIES HAVE BEEN TAKEN FROM BEST INFORMATION AVAILABLE. CONTRACTOR MUST VERIFY EXACT LOCATION AND DEPTH TO HIS OWN SATISFACTION.

SEDIMENT CONTROL MEASURES FOR THIS CONTRACT WILL BE IMPLEMENTED IN ACCORDANCE WITH THIS PLAN, WITH SECTION 219 OF THE STANDARD SPECIFICATIONS, AND SEDIMENT CONTROL PLAN SDP-91-79

REVIEWED FOR HOWARD SOIL CONSERVATION DISTRICT AND MEETS TECHNICAL REQUIREMENTS

[Signature] 3/15/91
SIGNATURE DATE

THIS DEVELOPMENT PLAN IS APPROVED FOR SOIL EROSION AND SEDIMENT CONTROL BY THE HOWARD COUNTY CONSERVATION DISTRICT.

[Signature] 3/15/91
APPROVED DATE

FILE REFERENCES:
PLAT 8840
SDP-91-79

DEPARTMENT OF PUBLIC WORKS
HOWARD COUNTY, MARYLAND

Director of Public Works - DATE
Robert M. Reimer 3-13-91

Chief - Bureau of Utilities - DATE
[Signature] 3/15/91

DAFT McCUNE WALKER, INC.
LAND PLANNING CONSULTANTS
LANDSCAPE ARCHITECTS
ENGINEERS

200 E. PENNSYLVANIA AVENUE
TOWSON, MARYLAND 21284

DESIGN BY: T.J.
DRAWN BY: T.J.
CHECKED BY: J.W.R.
DATE: DEC 21, 90

WATER AND SEWER EXTENSION

600 SCALE MAP NO. 22 BLOCK NO.

DORSEY SEARCH
VILLAGE CENTER
PARCEL L-4

HOWARD COUNTY, MARYLAND 2ND ELECTION DISTRICT

CONTRACT NO. 24-3121-D
AS-BUILT

SCALE 1" = 50'
SHEET 1 OF 1