

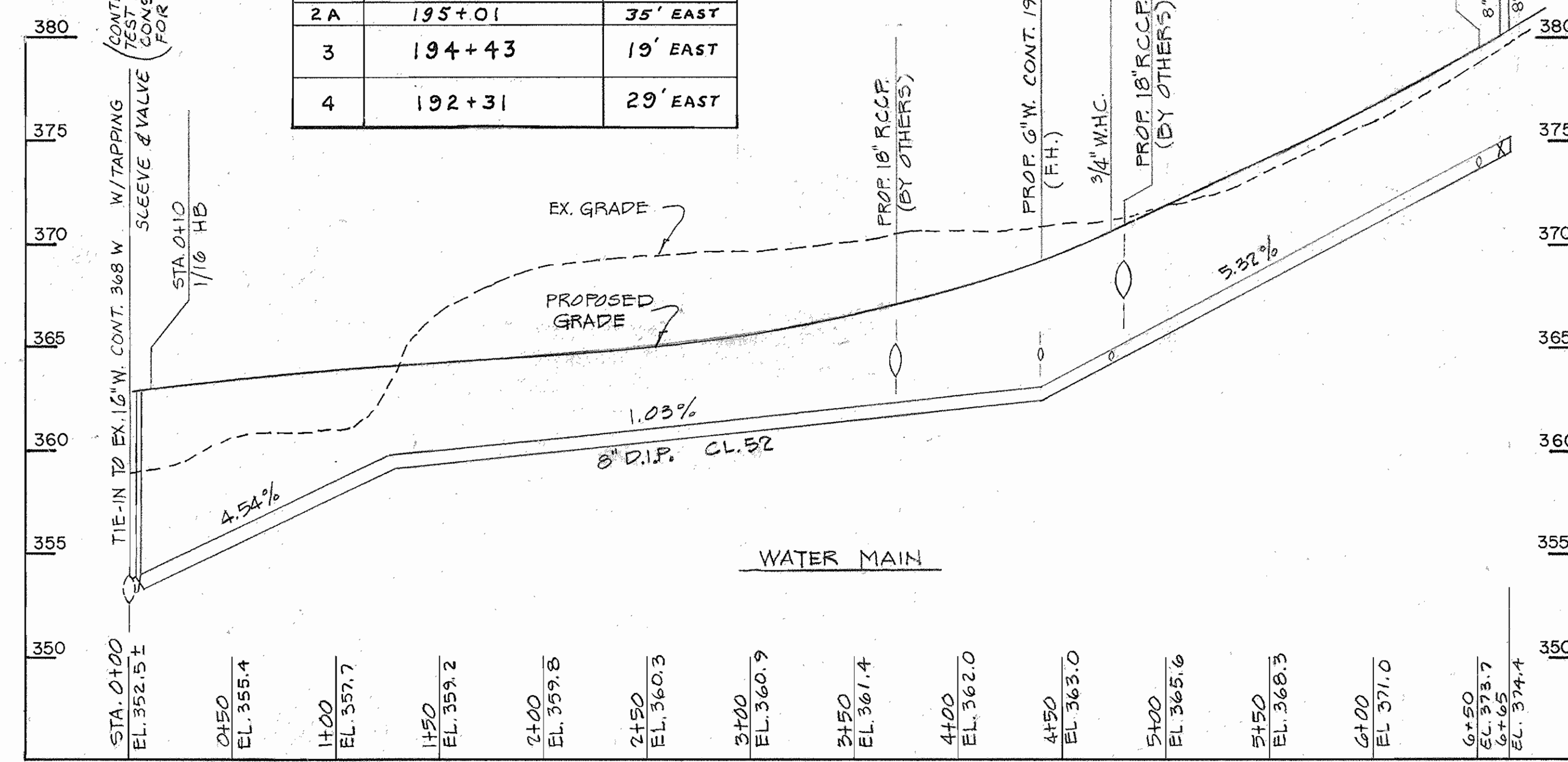
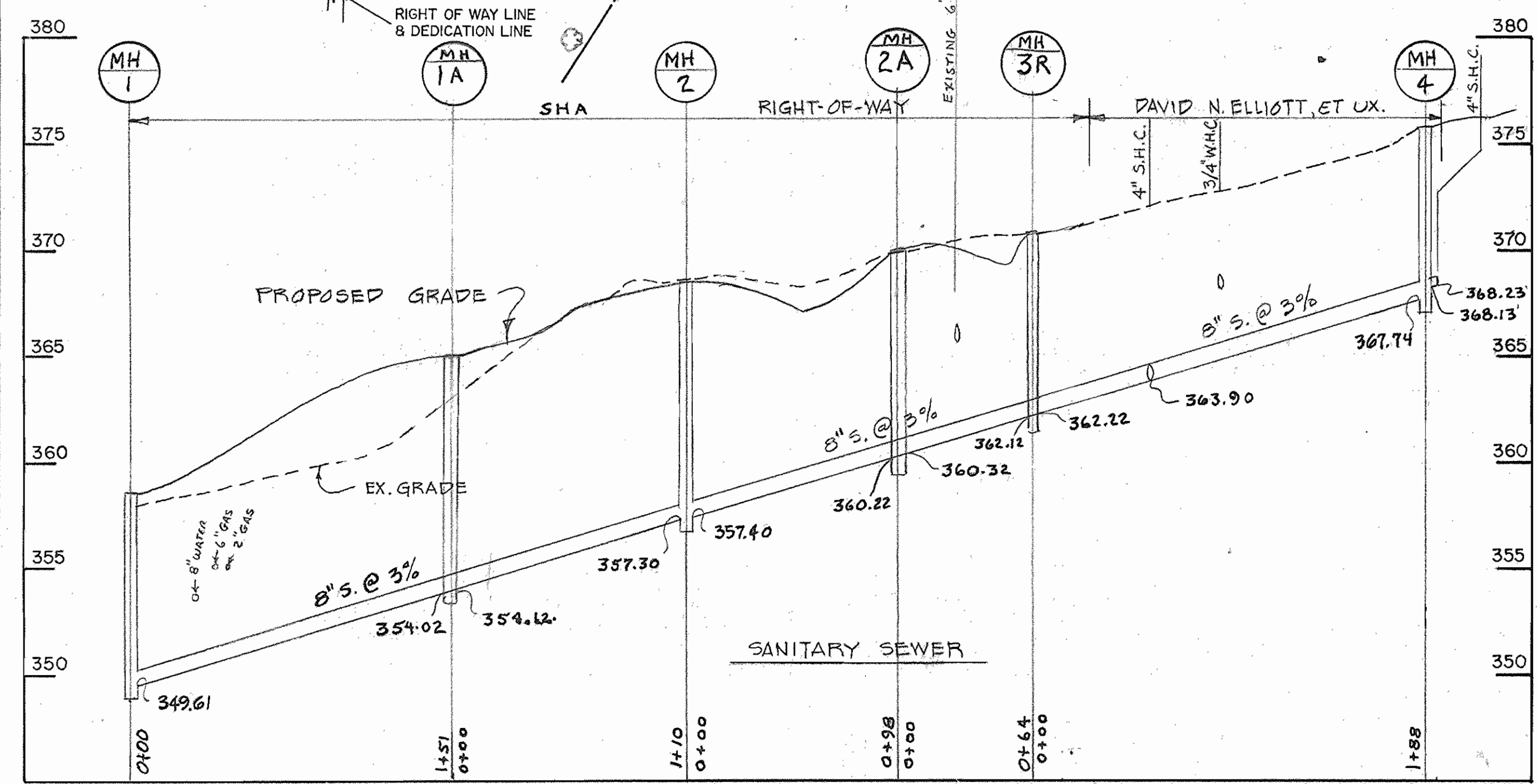
NOTES:
 "A" FORMERLY BASIL E. JOHNSON, ET UX ITEM # 73854, NOW S.H.A.
 "B" FORMERLY BAXTER W. JACKSON ITEM # 52322, NOW S.H.A.
 "C" ALL STORM DRAINS ARE BY OTHERS
 "D" CONTRACTOR SHALL TEST PIT 16" W
 "E" LIMIT OF CONSTRUCTION
 "F" DEFLECT FOUR JOINTS TO THE LEFT BY 2" EACH

PLAN
SCALE: 1" = 50'

RESTORATION SCHEDULE		
STATION	DESCRIPTION	REMARKS
8" W STA. 0+00 TO 0+42	BITUMINOUS PAVEMENT	
8" S STA. 0+00(MH1) TO 0+22	BITUMINOUS PAVEMENT	
8" W STA. 0+42 TO 5+10	SEED & MULCH	
8" S STA. 0+22 TO 1+16 (MH3R)	SEED & MULCH	
8" W STA. 5+10 TO 5+42	BITUMINOUS PAVEMENT	
8" S STA. 1+16 TO 1+36(MH3R)	BITUMINOUS PAVEMENT	
8" W STA. 5+42 TO 6+65	SEED & MULCH	
8" S STA. 1+36(MH3R) TO MH4	SEED & MULCH	

STAKE-OUT TABLE 8" WATER			
STATION	STATION SHAKER DRIVE	OFFSET	
1/16 H.B. STA. 0+10	198+09	18' EAST	
P.C. STA 0+26	197+93.85	18' EAST	
P.T. STA. 3+25	195+03.85	18' EAST	
P.C. STA. 3+76	194+53.85	11' EAST	
P.T. STA. 5+61	192+60.45	11' EAST	
8" CAP STA. 6+65	191+56.45	11' EAST	

STAKE-OUT TABLE 8"SEWER		
MH	STATION SHAKER DRIVE	OFFSET
1	198+40	44' EAST
1A	196+97	38' EAST
2	195+93	37' EAST
2A	195+01	35' EAST
3	194+43	19' EAST
4	192+31	29' EAST



PROFILES
SCALE: HOR. 1" = 50'
VERT. 1" = 5'

QUANTITIES		
ITEM	ESTIMATE	AS BUILT
8" W D.I.P. CL.52	665 L.F.	665 L.F.
8" S D.I.P. CL.52	591 L.F.	602.94
4" DIA. MANHOLE	6	6
16" X 8" TAPPING SLEEVE AND VALVE	1	1
W.H.C. 3/4"	46 L.F.	65 L.F.
S.H.C. 4"	8 L.F.	8 L.F.

DEPARTMENT OF PUBLIC WORKS
 HOWARD COUNTY, MARYLAND
 Director of Public Works: [Signature] 2-8-91
 Chief, Bureau of Engineering: [Signature] 2-8-91
 Chief, Bureau of Utilities: [Signature] 2-7-91
 Chief, Utility Division: [Signature] 2-1-91

JOHN E. HARMS JR. & ASSOCIATES INC.
 90 GOVERNOR RITCHIE HIGHWAY
 PASADENA MD. 21122
 Professional Engineer: [Signature]

DES: A.K.			
DRN: M.J.D.			
CHK: W.R.G.			
DATE: 10/18/90	BY: NO.	REVISION	DATE

PLAN & PROFILES OF SEWER AND WATER MAINS
 600' SCALE MAP NO. 36 BLOCK NO. 19

WATER & SEWER EXTENSION SHAKER DR. AND SENECA DR. U.S. 29 WATER & SEWER RELOCATIONS
 CAPITAL PROJECT S-6691
 CONTRACT 24-3108
 ELECTION DISTRICT 6
 HOWARD COUNTY, MARYLAND
 SCALE AS SHOWN
 SHEET GRAF OF 6

AS-BUILT