

THIS DEVELOPMENT IS APPROVED FOR EROSION AND SEDIMENT CONTROL BY HOWARD SOIL CONSERVATION DISTRICT.

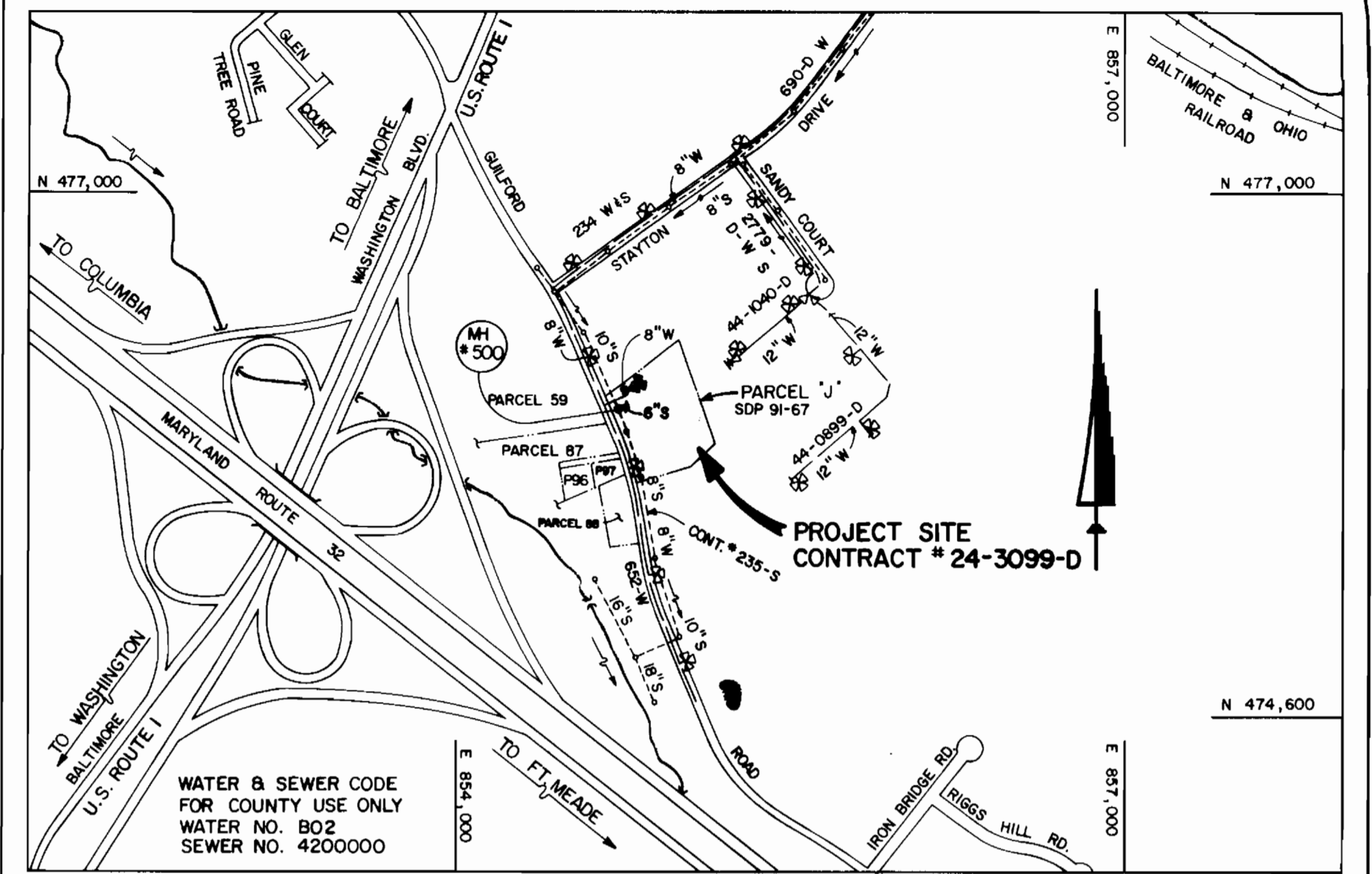
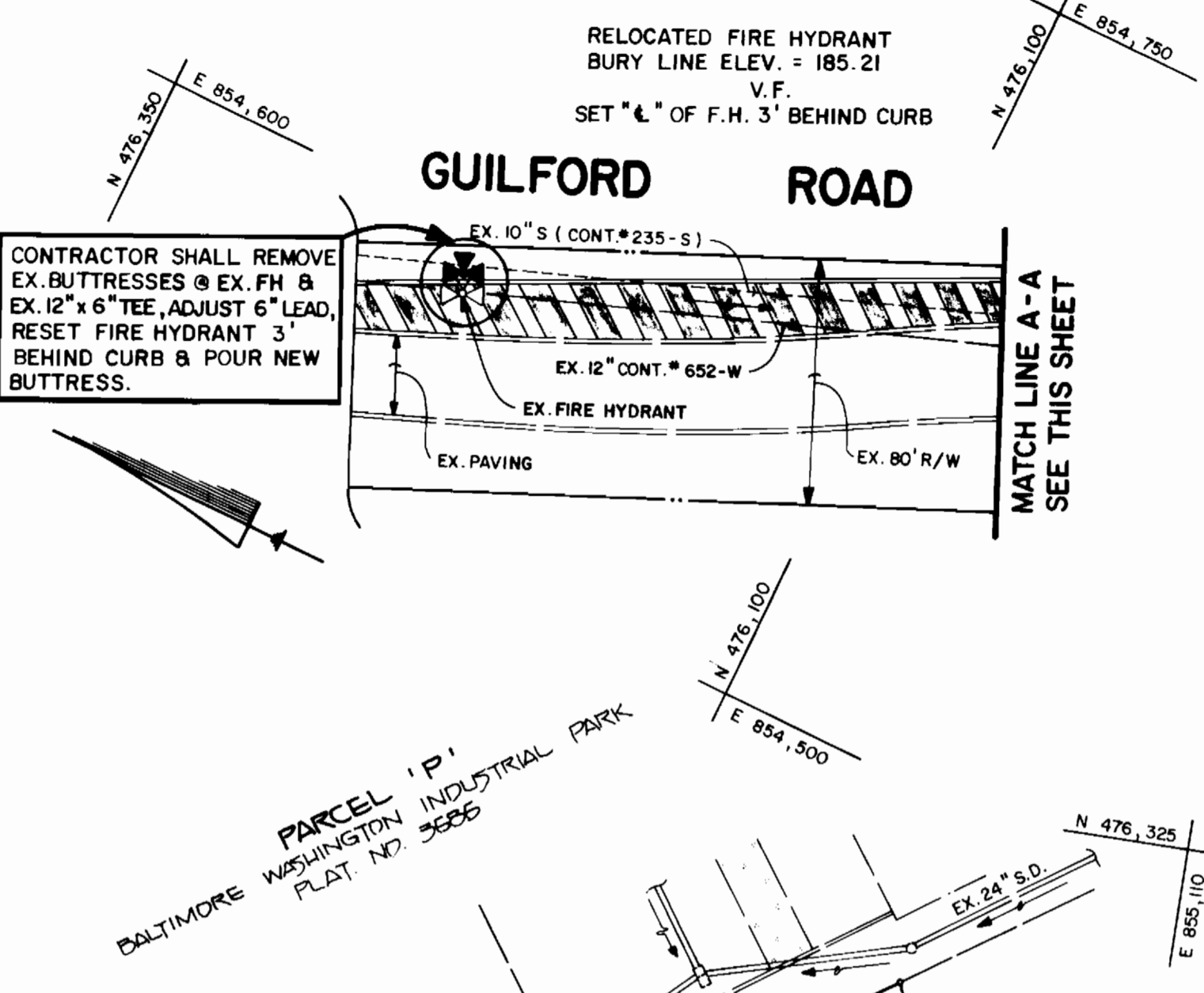
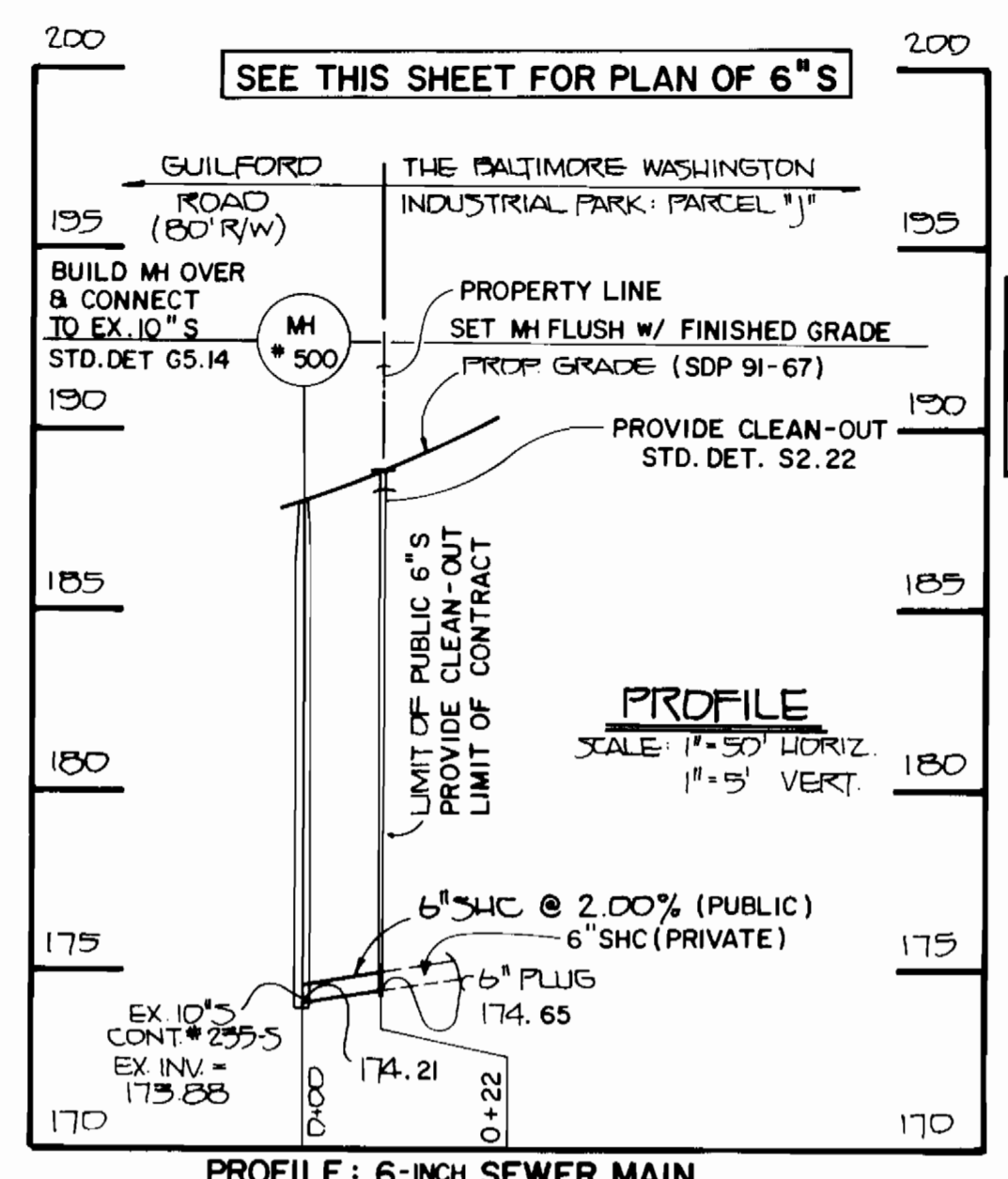
APPROVED: *J. H. Robertson* 4/19/91  
HOWARD SOIL CONSERVATION DISTRICT

SEDIMENT CONTROL MEASURES FOR THIS CONTRACT WILL BE IMPLEMENTED IN ACCORDANCE WITH SECTION 219 OF THE HOWARD COUNTY DESIGN MANUAL & STANDARDS AND SPECIFICATIONS FOR SOIL EROSION AND SEDIMENT CONTROL IN DEVELOPING AREAS AND ALSO AS SHOWN ON THE SITE DEVELOPMENT PLAN SDP 91-67.

APPROVED: *James M. Allen* 4/19/91  
HOWARD SOIL CONSERVATION DISTRICT

PLAN REFERENCE NUMBERS  
SDP 91-67

QUANTITIES			
ITEM	ESTIMATED	AS - BUILT	SUPPLIER
12" x 8" TAP SLEEVE	1 EACH		
8" WATER	180 L.F.		
6" WATER	19 L.F.		
4" WATER	10 L.F.		
FIRE HYDRANT	1 EACH		
8" TAP VALVE	1 EACH		
6" VALVE	1 EACH		
6" SEWER	22 L.F.		
MANHOLE	1 EACH		
4" VALVE	1 EACH		

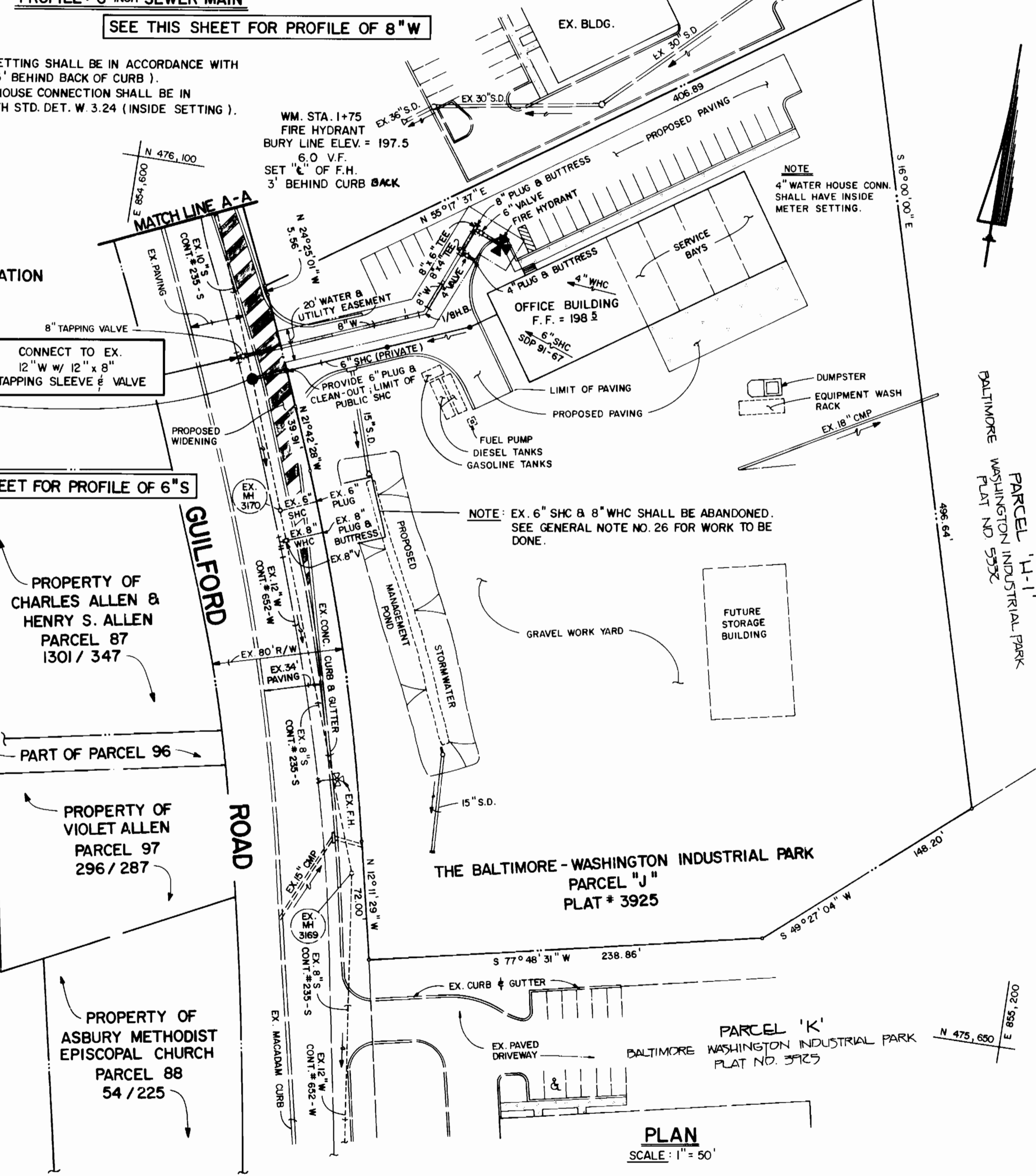
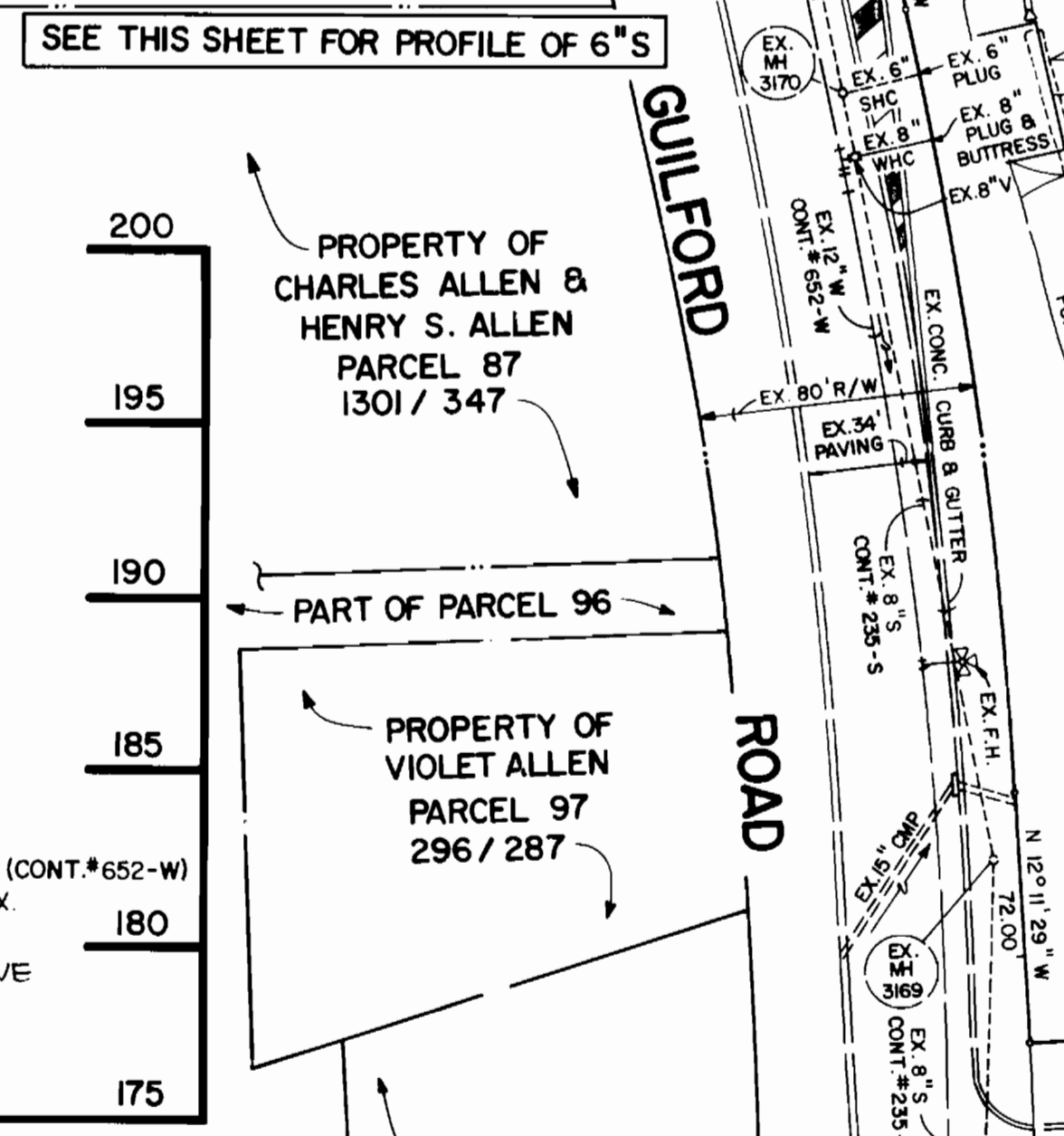
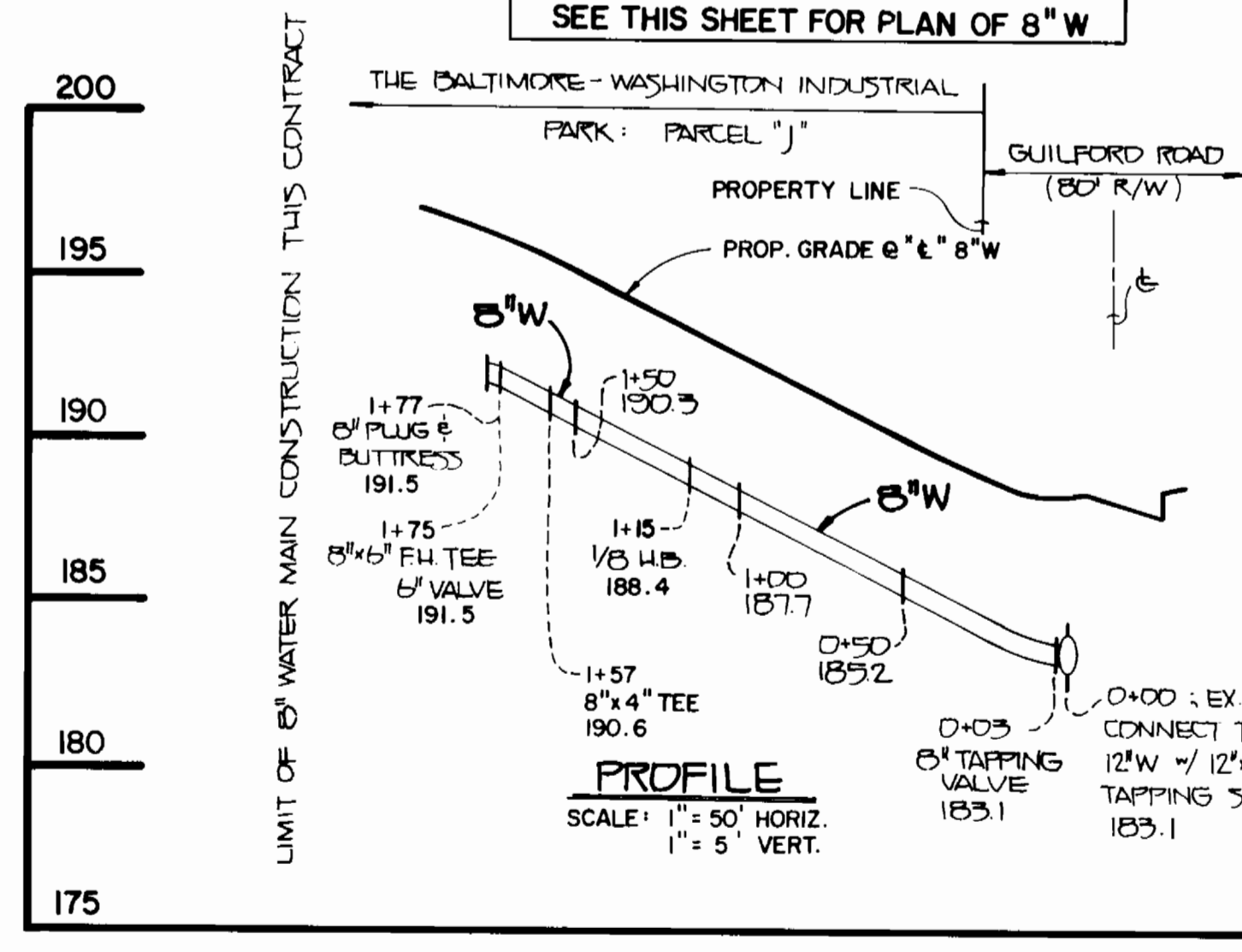


NOTES: 1. FIRE HYDRANT SETTING SHALL BE IN ACCORDANCE WITH STD. DET. W.1.11 (3' BEHIND BACK OF CURB).  
2. 4-INCH WATER CONNECTION SHALL BE IN ACCORDANCE WITH STD. DET. W.3.24 (INSIDE SETTING).

TYPE OF BUILDING: COMMERCIAL  
NUMBER OF LOTS: 1 PARCEL  
NO. OF WATER HOUSE CONNECTIONS: 1  
NO. OF SEWER HOUSE CONNECTIONS: 1  
DRAINAGE AREA: LITTLE PATUXENT

GENERAL NOTES

- APPROXIMATE LOCATION OF EXISTING MAINS ARE SHOWN. THE CONTRACTOR SHALL TAKE ALL NECESSARY PRECAUTIONS TO PROTECT EXISTING MAINS AND SERVICES AND MAINTAIN UNINTERRUPTED SUPPLY. ANY DAMAGED INCURRED SHALL BE REPAIRED IMMEDIATELY TO THE SATISFACTION OF THE ENGINEER AT THE CONTRACTOR'S EXPENSE.
- ALL HORIZONTAL CONTROLS ARE BASED ON MARYLAND STATE COORDINATES.
- ALL VERTICAL CONTROLS ARE BASED ON U.S.G.S. DATUM
- ALL PIPE ELEVATIONS ARE INVERT ELEVATIONS.
- CLEAR ALL UTILITIES BY A MINIMUM OF 6"
- FOR DETAILS NOT SHOWN ON THE DRAWINGS, AND FOR MATERIALS AND CONSTRUCTION METHODS, USE HOWARD COUNTY DESIGN MANUAL, VOLUME IV, STANDARD SPECIFICATIONS AND DETAILS FOR CONSTRUCTION (1989 AMENDMENTS) THE CONTRACTOR SHALL HAVE A COPY OF VOLUME IV ON THE JOB SITE.
- WHERE TEST PITS HAVE BEEN MADE ON EXISTING UTILITIES, THEY ARE NOTED BY THE SYMBOL [ ] AT THE LOCATION OF THE TEST PIT. A NOTE OR NOTES CONTAINING THE RESULTS OF THE TEST PIT OR PITS IS INCLUDED ON THE DRAWINGS. EXISTING UTILITIES IN THE VICINITY OF THE PROPOSED WORK FOR WHICH TEST PITS HAVE NOT BEEN DUG SHALL BE VERIFIED BY THE CONTRACTOR TO HIS OWN SATISFACTION. ANY DAMAGE TO EXISTING FACILITIES DUE TO THE CONTRACTOR'S NEGLIGENCE SHALL BE REPAIRED AT THE CONTRACTOR'S EXPENSE.
- CONTRACTOR SHALL NOTIFY THE FOLLOWING UTILITIES OR AGENCIES AT LEAST FIVE WORKING DAYS BEFORE STARTING WORK SHOWN ON THESE PLANS:  
C. & P. TELEPHONE COMPANY - 1-800-257-7777  
STATE HIGHWAY ADMINISTRATION - 531-5533  
BALTIMORE GAS & ELECTRIC CO. - CONTRACTOR SERVICES - 850-4820  
BALTIMORE GAS & ELECTRIC CO. - UNDER GROUND DAMAGE CONTROL - 859-9004  
BALTIMORE GAS & ELECTRIC CO. - TROUBLE SHOOTING - 298-9001  
MISS UTILITY - 1-800-559-0100  
COLONIAL PIPELINE CO. - 795-1390  
BUREAU OF UTILITIES, HOWARD COUNTY DEPARTMENT OF PUBLIC WORKS - 313-4900
- TREES AND SHRUBS ARE TO BE PROTECTED FROM DAMAGE TO MAXIMUM EXTENT. TREES AND SHRUBS LOCATED WITHIN THE CONSTRUCTION STRIP ARE NOT TO BE REMOVED OR DAMAGED BY THE CONTRACTOR.
- CONTRACTOR SHALL REMOVE TREES STUMPS AND ROOTS ALONG THE LINE OF EXCAVATION. PAYMENT FOR SUCH REMOVAL SHALL BE INCLUDED IN THE UNIT PRICE BID FOR CONSTRUCTION OF THE MAIN.
- ALL SEWER MAINS SHALL BE C.S.P.X., R.C.S.P., V.C.P.X., OR P.V.C. UNLESS OTHERWISE NOTED.
- ALL MANHOLES SHALL BE 4'-0" INSIDE DIAMETER UNLESS OTHERWISE NOTED.
- T.B. DENOTES TEST BORING.
- MANHOLES SHOWN WITH 12" AND 18" WALLS ARE FOR BRICK MANHOLES ONLY.
- MANHOLES DESIGNATED W.T. IN PLAN AND PROFILE SHALL HAVE WATERTIGHT FRAME AND COVERS, STANDARD DETAIL G 5.52.
- WHERE WATERTIGHT MANHOLE FRAME AND COVER IS USED, SET TOP OF FRAME 1'6" ABOVE FINISHED GRADE UNLESS OTHERWISE NOTED ON THE DRAWINGS.
- ALL WATER HOUSE CONNECTIONS SHALL BE FOR INSIDE METER SETTINGS, UNLESS OTHERWISE NOTED ON THE PLANS OR IN THE SPECIFICATIONS.
- HOUSE(S) WITH THE SYMBOL "C.N.S." INDICATES THAT THE CELLAR CAN NOT BE SERVED.
- ALL WATER HOUSE CONNECTIONS SHALL BE FOR INSIDE METER SETTING, UNLESS OTHERWISE NOTED ON THE PLANS OR IN SPECIFICATIONS.
- MANHOLES LOCATED WITHIN THE PROPOSED ROADWAY SHALL HAVE STANDARD HEAVY TRAFFIC MANHOLES, FRAMES AND COVERS STANDARD DETAIL G5.15
- THE CONTRACTOR SHALL PROVIDE A JOINT IN ALL SEWER MAINS WITHIN 2'-0" OF EXTERIOR MANHOLE WALL.
- WATER MAINS AND WATER HOUSE CONNECTION LINES MUST BE PLACED SO AS TO HAVE ONE (1) FOOT SEPARATION FROM THE SEWER MAIN OR SEWER HOUSE CONNECTION AS THEY PASS ABOUT IT.
- ALL WATER MAINS TO BE D.I.P., CLASS 52 UNLESS OTHERWISE NOTED.
- TOPS OF ALL WATER MAINS TO HAVE A MINIMUM OF 3-1/2" COVER UNLESS OTHERWISE NOTED.
- VALVES ADJACENT TO TEES SHALL BE STRAPPED TO TEES.
- ALL FITTINGS SHALL BE BUTTRESSED OR ANCHORED WITH CONCRETE IN ACCORDANCE WITH THE STANDARD DETAILS UNLESS OTHERWISE PROVIDED FOR ON THE DRAWINGS.
- FIRE HYDRANTS SHALL BE SET TO THE BURY LINE ELEVATION SHOWN ON THE DRAWINGS. ALL FIRE HYDRANTS SHALL BE STRAPPED AND BUTTRESSED WITH CONCRETE IN ACCORDANCE WITH STANDARD DETAILS. SOIL AROUND THE FIRE HYDRANT SHALL BE COMPACTED IN ACCORDANCE WITH SECTION 1000 AND 1002 OF THE STANDARD SPECIFICATIONS.
- CONTRACTOR SHALL NOT OPERATE ANY WATER MAIN VALVES ON THE EXISTING WATER SYSTEM.
- ALL D.I.P. FITTINGS SHALL BE IN ACCORDANCE WITH ANWA SPECIFICATIONS C-153; DUCTILE IRON COMPACT FITTINGS, 3-INCH THROUGH 12-INCH FOR WATER AND OTHER LIQUIDS.
- THE CONTRACTOR SHALL ABANDON THE EXISTING WATER AND SEWER HOUSE CONNECTIONS AS FOLLOWS:  
EX. 8" WHC: THE 8" WATER MAIN BEYOND THE 8" VALVE SHALL BE REMOVED. THE 8" VALVE SHALL BE CLOSED AND A CONCRETE BUTTRESS POURED AGAINST THE VALVE. THE ROADWAY VALVE BOX SHALL BE REMOVED.  
EX. 6" SHC: THE 6" SEWER MAIN SHALL BE BRICKED & PLUGGED AT EX. MH # 3170.



CONTRACT NO. 24-3099-D  
BALT. - WASH. INDUSTRIAL PARK  
PARCEL "J": GUILFORD ROAD  
WATER AND SEWER EXTENSIONS  
HOWARD COUNTY, MARYLAND

DEPARTMENT OF PUBLIC WORKS  
HOWARD COUNTY, MARYLAND

*James M. Allen* 4/24/91  
DIRECTOR OF PUBLIC WORKS  
*Robert V. Keenan* 4-17-91  
CHIEF, BUREAU OF UTILITIES

FISHER, COLLINS & CARTER, INC.

CIVIL ENGINEERING CONSULTANTS & LAND SURVEYORS  
SUITE 100, 9171 BALTIMORE NATIONAL PIKE  
ELLCOTT CITY, MARYLAND 21043  
(301) 461-2855

#9757  
TERRELL A. FISHER

DES: MJM	DRWN: SFH	CHK: PWK	DATE: 4-20-91
BY: NO.	REVISION	DATE	600' SCALE MAP NO. 1-48

WATER & SEWER MAIN EXTENSIONS  
PLAN & PROFILES

BALT. - WASH. INDUSTRIAL PARK  
PARCEL "J": GUILFORD ROAD  
CONTRACT NO. 24-3099-D  
SIXTH ELECTION DISTRICT  
HOWARD COUNTY, MARYLAND

SCALE AS SHOWN  
SHEET 1 OF 1