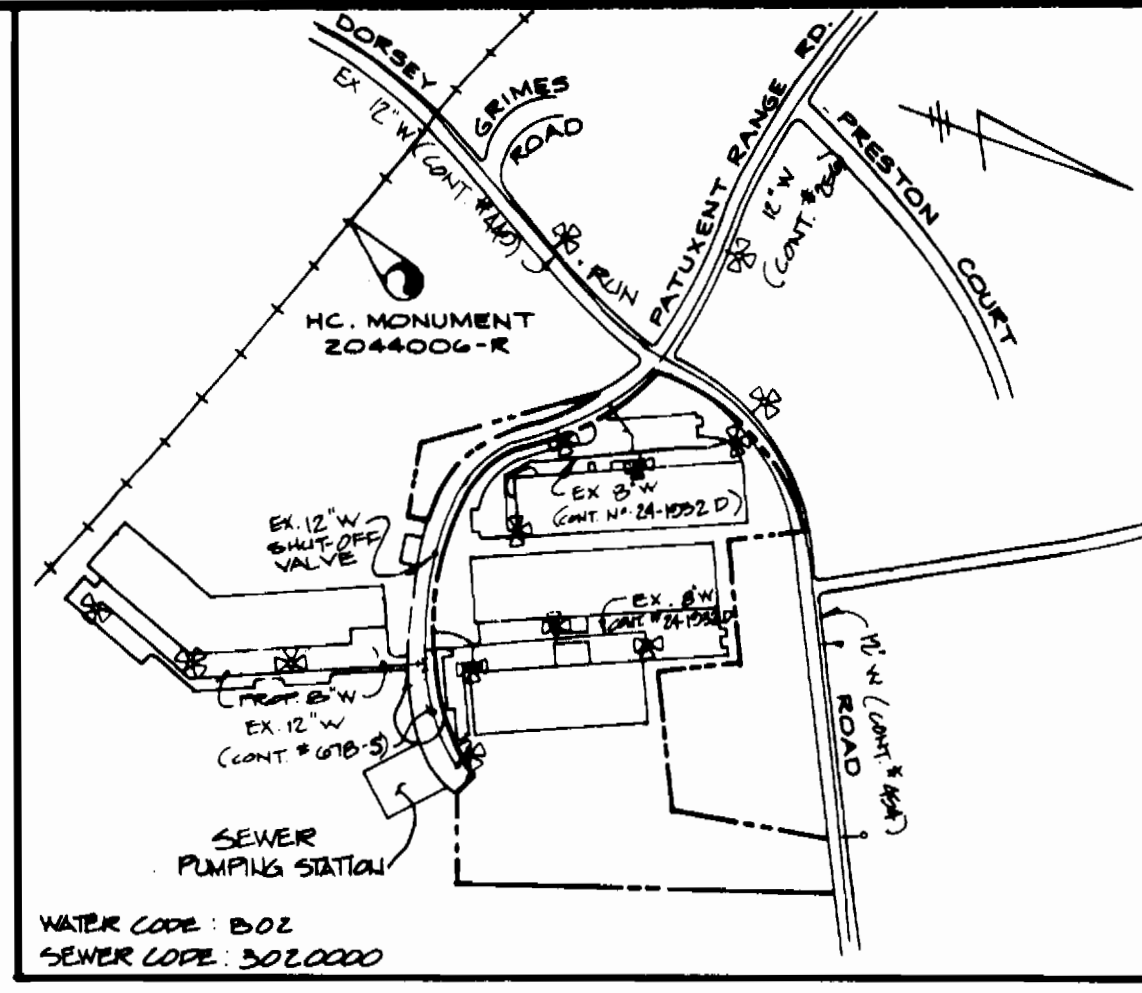


TYPE OF BUILDING	WAREHOUSING
NUMBER OF LOTS	
NR. OF WATER HOUSE CONNECTIONS	1
WATER CODE	B02
NR. OF SEWER HOUSE CONNECTIONS	1
DRAINAGE AREA	DORSEY RUN (L. Patuxent Treatment Plant)
SEWER CODE	3020000

ITEM	QUANTITIES		SUPPLIER
	ESTIMATED	AS BUILT	
(SEWER QUANTITIES)			
8" PVC	79 LF.		
48" MANHOLE	2 EA.		
8" PLUG	1 EA.		
(WATER QUANTITIES)			
12" x 15" TS & B" V	1		
6" WATER	47 LF.		
8" WATER	1291 LF.		
6" VALVE	3 EA.		
8" VALVE	1 EA.		
FIRE HYDRANT (6")	3 EA.		
8" PLUG	2 EA.		
1/2" BEND 8"	1 EA.		
1/2" BEND 6"	1 EA.		
8" x 6" TEE	3 EA.		
8" x 8" TEE	1 EA.		



**VICINITY MAP**  
SCALE: 1" = 600'  
BEARINGS AND COORDINATES AS SHOWN HEREON ARE BASED ON THE MARYLAND STATE PLANE COORDINATE SYSTEM AS ADAPTED BY HOWARD COUNTY AS REFERENCED FROM TRAVERSE STATIONS NR. 2044006 N476227 101 E897065.366

- SEDIMENT CONTROL NOTES**
- FOR SEDIMENT CONTROL FOR THIS CONTRACT SPP-00-130 SEE APPROVED SEDIMENT CONTROL PLANS AND SECTION 210.
  - MATERIAL FROM TRENCH EXCAVATION SHALL BE PLACED ON THE UPHILL SIDE OF TRENCH.
  - CONTRACTOR TO BACKFILL, COMPACT AND STABILIZE IMMEDIATELY AFTER INSTALLATION OF PIPE. NO TRENCHES WILL BE LEFT OPEN AT THE END OF EACH DAY, EXCEPT THAT PORTION WHERE WORK HAS STOPPED.
  - ANY SEDIMENT CONTROL FACILITIES ENCOUNTERED DURING PIPE CONSTRUCTION TO BE RETURNED TO ORIGINAL CONDITION IMMEDIATELY UPON COMPLETION OF THAT PORTION OF WORK.

- GENERAL NOTES**
- Approximate location of existing mains are shown. The contractor shall take all necessary precautions to protect existing mains and services and maintain uninterrupted supply. Any damage incurred shall be repaired immediately to the satisfaction of the engineer at the contractor's expense.
  - All horizontal controls are based on U.S.G.S. data.
  - All vertical controls are based on U.S.G.S. data.
  - All pipe elevations shown are invert elevations. Clear all utilities by a minimum of 8".
  - For details not shown on the drawings and for materials and construction methods, use Howard County Design Manual, Volume IV, Standard Specifications and Details for Construction. The contractor shall have a copy of Volume IV on the job.
  - Where test pits have been made on existing utilities, they are noted by the symbol (⊙). At the location of the test pit a note or notes containing the results of the test pit or pits is included on the drawings. Existing utilities in the vicinity of the proposed work for which test pits have not been dug shall be verified by the contractor to his own satisfaction. Any damage to existing facilities due to the contractor's negligence shall be repaired at the contractor's expense.
  - Contractor shall notify the following utilities or agencies at least five working days before starting work shown on these plans:
    - Blelo Highway Administration 831-8833
    - Baltimore Gas & Electric Company 881-2888
    - Contractor Services 234-8821
    - Underground Damage Control 888-8013
    - Trouble Shooting 1-888-0100
    - Miss Utility 788-1380
    - Galathea Pipeline Company
    - Howard County Department of Public Works Bureau of Utilities 343-4300
  - Trees and shrubs are to be protected from damage to maximum extent. Trees and shrubs located within the construction strip are not to be removed or damaged by the contractor. Contractor shall remove trees, stumps and roots along line of excavation. Payment for such removal shall be included in the unit price bid for construction of the main.
  - All water mains to be D.I.P. class 82 unless otherwise noted.
  - Top of all water mains to have a minimum of 3.5' cover unless otherwise noted.
  - Valves adjacent to loss shall be strapped to loss.
  - All fittings shall be buttressed or anchored with concrete in accordance with the standard details unless otherwise provided for on the drawings.
  - Fire hydrants shall be set to the bury line elevations shown on the drawings. All fire hydrants shall be strapped and buttressed with concrete in accordance with standard details. Soil around the fire hydrant shall be compacted in accordance with section 1000 and 1005 of the standard specifications.
  - The contractor shall not operate any water main valves on the existing water system.
  - Water mains and water house connection lines must be placed so as to have at least one (1) foot separation from the sewer main or sewer house connection as they pass about it.
  - ALL WATER HOUSE CONNECTIONS SHALL BE INSIDE METER SETTINGS.
  - ALL OPEN FITTINGS SHALL BE IN ACCORDANCE WITH A.W.W.A. SPECIFICATIONS C-113. DUSTY IRON, COMPACT FITTINGS, 3-INCH THROUGH 12-INCH FOR WATER & OTHER LIQUIDS.

SEDIMENT CONTROL MEASURES FROM THIS CONTRACT WILL BE IMPLEMENTED IN ACCORDANCE WITH SECTION 210 OF THE SPECIFICATIONS AND AS SHOWN ON SPP-91-157

HOWARD SOIL CONSERVATION DISTRICT REVIEWED FOR HOWARD SOIL CONSERVATION DISTRICT AND MEETS TECHNICAL REQUIREMENTS

*James M. Thaler (S)* 12/10/90 DATE  
U.S. SOIL CONSERVATION SERVICE

THIS PLAN IS APPROVED FOR SOIL EROSION AND SEDIMENT CONTROL BY THE HOWARD SOIL CONSERVATION DISTRICT

*John J. Kelly* 12/10/90 DATE  
HOWARD SOIL CONSERVATION DISTRICT

FILE NOS. WP-90-50  
S-88-40

**OWNER / DEVELOPER**  
DORSEY RUN INDUSTRIAL PARK LIMITED PARTNERSHIP  
ARUNDEL BUILDING, SUITE 203  
110 WEST ROAD  
BALTIMORE, MARYLAND 21204

**PLAN**  
SCALE: 1" = 50'

DES. R.R.	
CHK. M.A.N.	
CHK. T.H.M.	
DATE 7/90	
BY NO	REVISION
	DATE

**DEPARTMENT OF PUBLIC WORKS**  
HOWARD COUNTY, MARYLAND

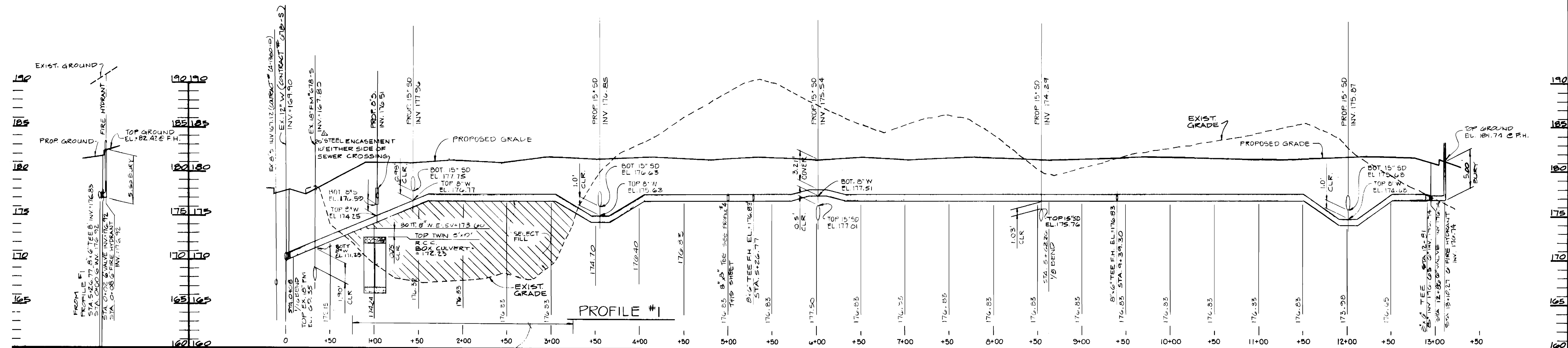
**D.S. THALER & ASSOC. INC.**  
7115 AMBASSADOR ROAD  
BALTIMORE, MARYLAND 21207  
(301)944-ENGR, 944-3647

**PUBLIC WATER AND SEWER PLAN**  
DORSEY RUN INDUSTRIAL PARK  
BUILDING D, PATUXENT RANGE ROAD  
CONTRACT No. 24-3061-D

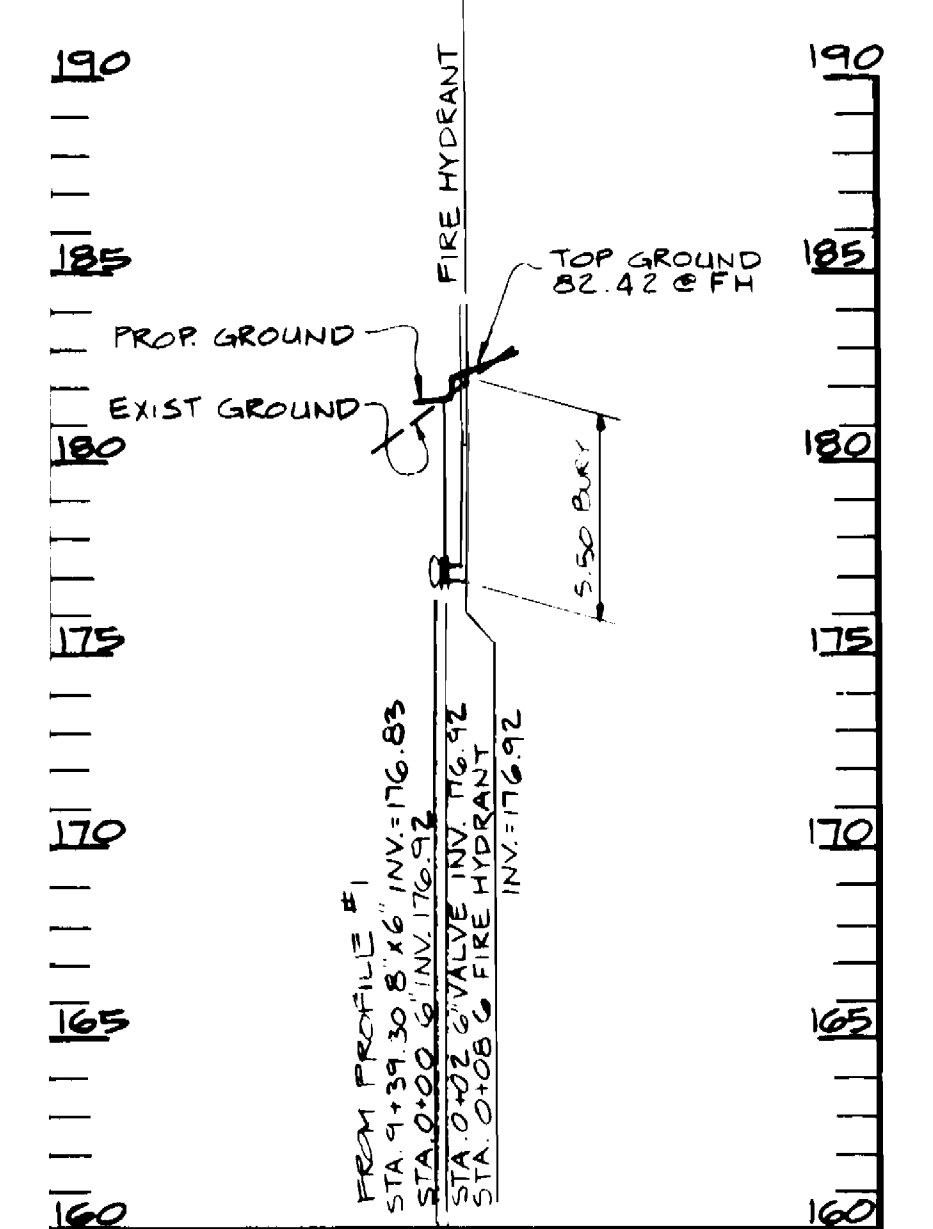
**PUBLIC WATER AND SEWER PLAN**  
DORSEY RUN INDUSTRIAL PARK  
BUILDING D, PATUXENT RANGE ROAD  
6TH ELECTION DISTRICT; HOWARD COUNTY, MD.  
TAX MAP: 48 PARCEL: 109 DATE: JULY, 1990

SCALE AS SHOWN  
SHEET 1 OF 2

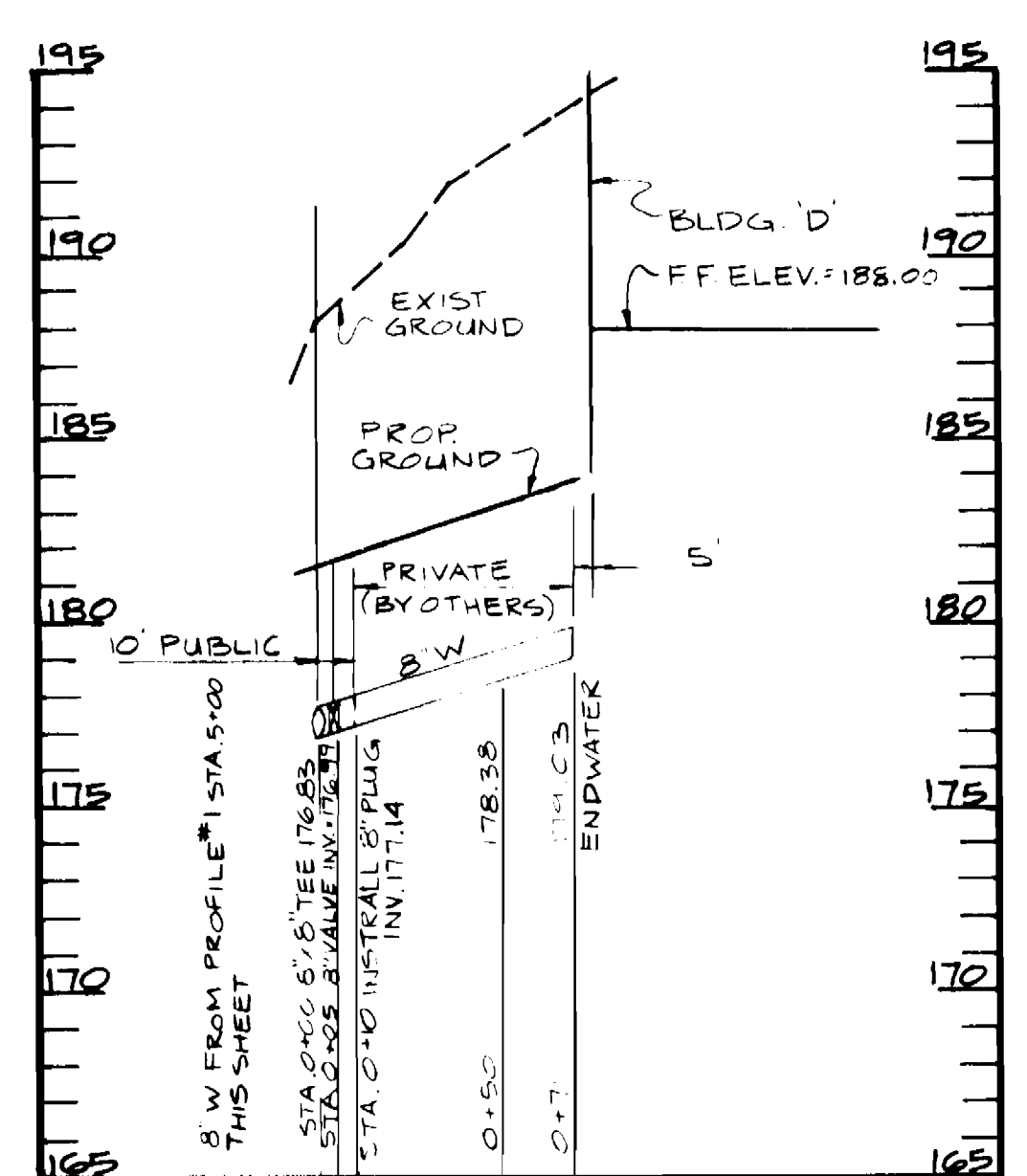




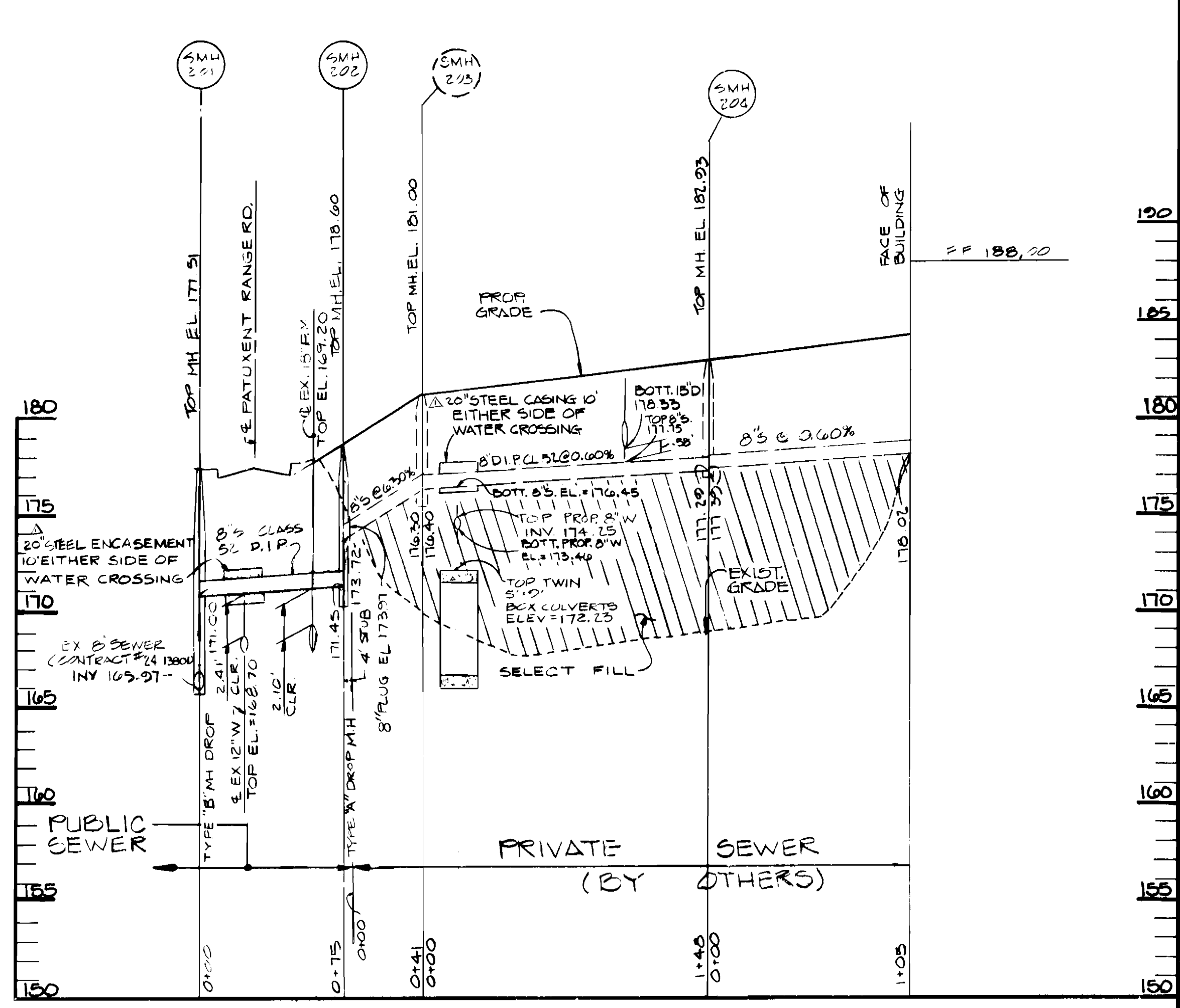
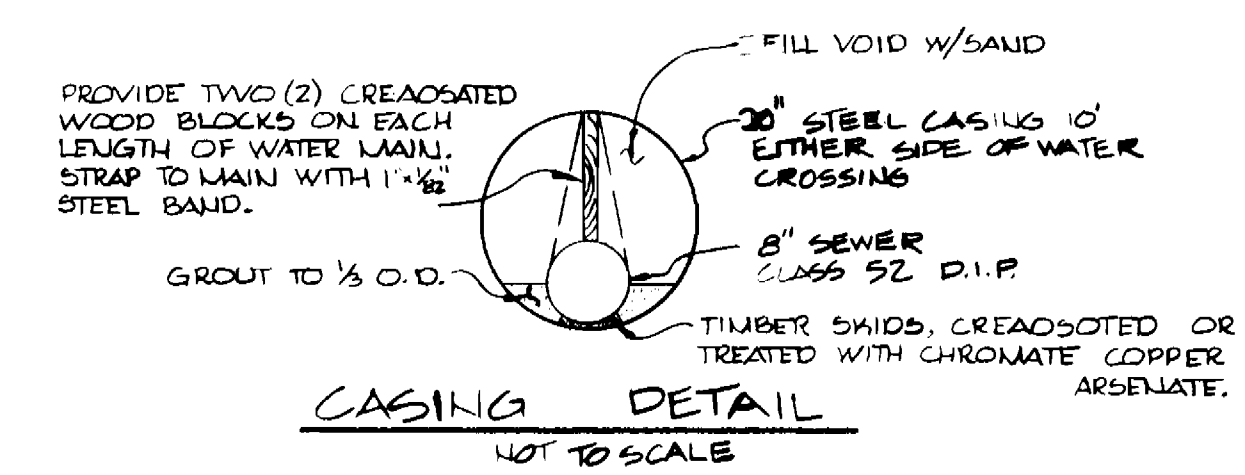
PROFILE #2



PROFILE #3



PROFILE #4



SEDIMENT CONTROL MEASURES FROM THIS CONTRACT WILL BE IMPLEMENTED IN ACCORDANCE WITH SECTION 210 OF THE SPECIFICATIONS AND AS SHOWN ON SDP-11-97

HOWARD SOIL CONSERVATION DISTRICT REVIEWED FOR HOWARD SOIL CONSERVATION DISTRICT AND MEETS TECHNICAL REQUIREMENTS

*Jane M. Thaler (s)* 12/10/90  
SOIL CONSERVATION SERVICE DATE

THIS PLAN IS APPROVED FOR SOIL EROSION AND SEDIMENT CONTROL BY THE HOWARD SOIL CONSERVATION DISTRICT

*Stephen V. Kelly* 12/10/90  
HOWARD SOIL CONSERVATION DISTRICT DATE

**OWNER / DEVELOPER**  
DORSEY RUN INDUSTRIAL PARK LIMITED PARTNERSHIP  
ARUNDEL BUILDING, SUITE 203  
110 WEST ROAD  
BALTIMORE, MARYLAND 21204

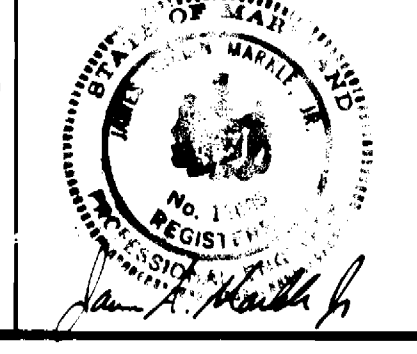
**DEPARTMENT OF PUBLIC WORKS**  
HOWARD COUNTY, MARYLAND

*Robert D. ...* 12-17-90  
DIRECTOR OF PUBLIC WORKS DATE

*Robert D. ...* 12-7-90  
CHIEF BUREAU OF UTILITIES DATE

*Colin M. ...* 12/10/90  
CHIEF LAND DEVELOPMENT DIVISION DATE

**D.S. THALER & ASSOC. INC.**  
7115 AMBASSADOR ROAD  
BALTIMORE, MARYLAND 21207  
(301)944-ENGR, 944-3647



UCS R.R.	RR	Δ	CHANGED 12" STEEL ENCASUREMENT TO 20"	1-17-92
DRN. C.A.B.				
CHK T.H.M.				
DATE 7/90	BY	NO	REVISION	DATE

**WATER & SEWER PROFILES**

**CONTRACT NO. 24-3061-D**  
**DORSEY RUN INDUSTRIAL PARK**  
S.D.17-  
6TH ELECTION DISTRICT HOWARD CO. MD.  
TAX MAP 48 PARCEL 109 DATE: JULY 1990

SCALE AS SHOWN SHEET 2 OF 2