

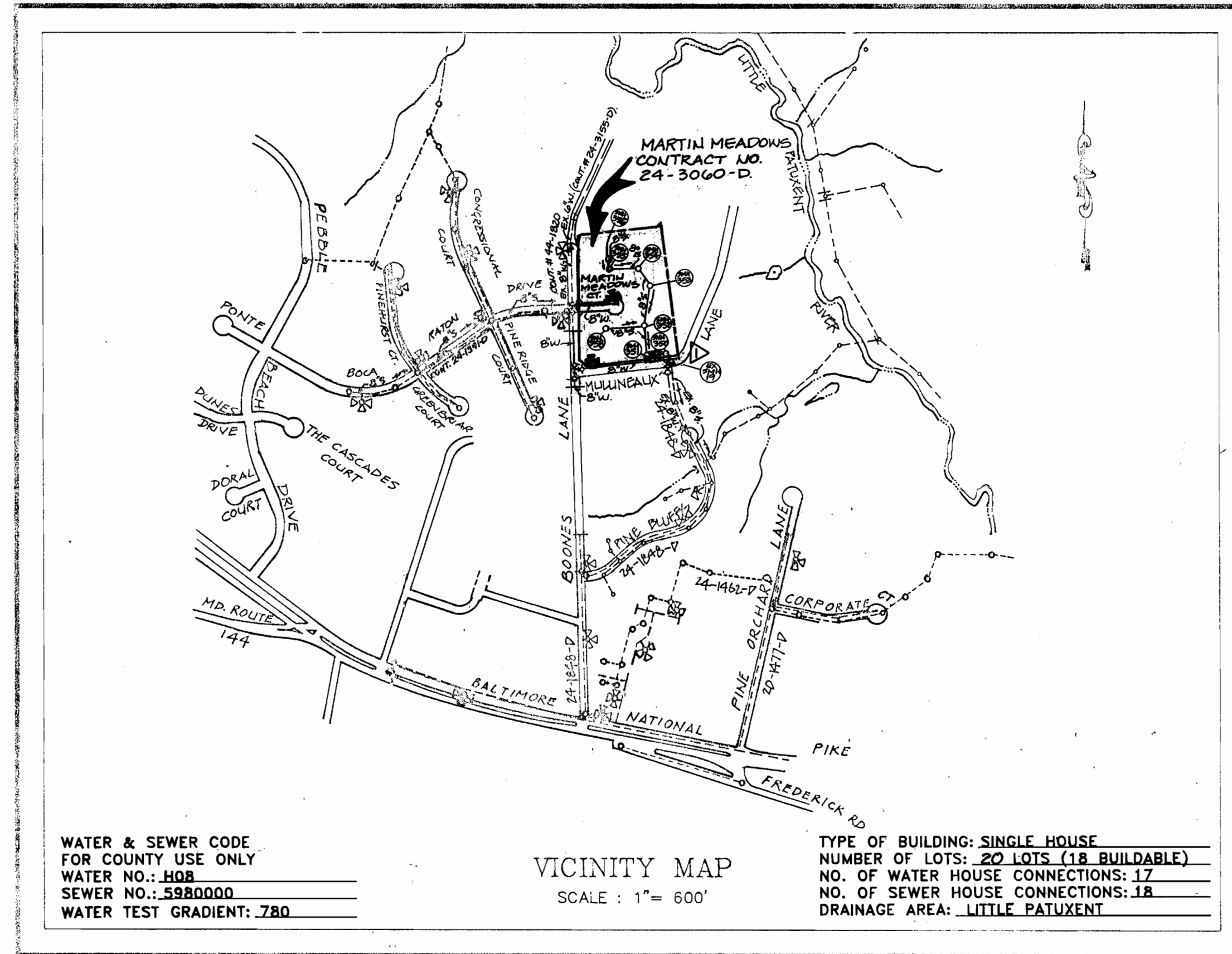
SEDIMENT CONTROL NOTES

- FOR SEDIMENT CONTROL FOR THIS CONTRACT, SEE THE APPROVED ROAD CONSTRUCTION PLANS
- MATERIALS FROM TRENCH EXCAVATION TO BE PLACED ON UPHILL SIDE OF TRENCH.
- CONTRACTOR TO BACKFILL, COMPACT AND STABILIZE IMMEDIATELY AFTER INSTALLATION OF PIPE. NO TRENCHES WILL BE LEFT OPEN AT THE END OF EACH DAY, EXCEPT THAT PORTION WHERE WORK HAS STOPPED.
- ANY SEDIMENT CONTROL FACILITIES ENCOUNTERED DURING PIPE CONSTRUCTION TO BE RETURNED TO ORIGINAL CONDITION IMMEDIATELY UPON COMPLETION OF THAT PORTION OF WORK.
- SEDIMENT CONTROL MEASURES FOR THIS CONTRACT WILL BE IMPLEMENTED IN ACCORDANCE WITH SECTION 219 OF THE HOWARD COUNTY STANDARD SPECIFICATION AND AS PER ROAD CONSTRUCTION PLANS. P-90-95

ITEMS	QUANTITIES ESTIMATED	AS-BUILT		
		QUANTITIES	TYPE	MANUFACTURER/SUPPLIER
8" SEWER	1,225 L.F.	1,110 L.F.	P.V.C.	J.M. Manufacturing/B.R.S.
4" SEWER	392 L.F.	793 L.F.	P.V.C.	J.M. Manufacturing/B.R.S.
MANHOLES	9 EACH	7 EA.	Precast Conc.	Atlantic Concrete Products
8" WATER	1,100 L.F.	1,071 L.F.	D.I.P.	Griffin Pipe Products
6" WATER	61 L.F.	48 L.F.	D.I.P.	Griffin Pipe Products
FIRE HYDRANTS	3 EACH	3 EA.		U.S. Pipe & Foundry/B.R.S.
3/4" WHC	407 L.F.	217 L.F. ^{Quantities Incomp.}		Howell Metals/B.R.S.
4" WHC	215 L.F.	215 L.F.		Griffin Pipe Products

NAME OF UTILITY CONTRACTOR: _____

SURVEY AND DRAFTING DIVISION AS-BUILT DATE: _____



GENERAL NOTES

- APPROXIMATE LOCATION OF EXISTING MAINS ARE SHOWN. THE CONTRACTOR SHALL TAKE ALL NECESSARY PRECAUTIONS TO PROTECT EXISTING MAINS AND SERVICES AND MAINTAIN UNINTERRUPTED SUPPLY. ANY DAMAGE INCURRED SHALL BE REPAIRED IMMEDIATELY TO THE SATISFACTION OF THE ENGINEER AT THE CONTRACTOR'S EXPENSE.
- ALL HORIZONTAL CONTROLS ARE BASED ON MARYLAND STATE COORDINATES.
- ALL VERTICAL CONTROLS ARE BASED ON U.S.G.S. DATUM
- ALL PIPE ELEVATIONS SHOWN ARE INVERT ELEVATIONS.
- CLEAR ALL UTILITIES BY A MINIMUM OF 6".
- FOR DETAILS NOT SHOWN ON THE DRAWINGS, AND FOR MATERIALS AND CONSTRUCTION METHODS, USE HOWARD COUNTY DESIGN MANUAL, VOLUME FOUR, STANDARD SPECIFICATIONS AND DETAILS FOR CONSTRUCTION. THE CONTRACTOR SHALL HAVE A COPY OF VOLUME FOUR ON THE JOB.
- WHERE TEST PITS HAVE BEEN MADE ON EXISTING UTILITIES, THEY ARE NOTED BY THE SYMBOL AT THE LOCATION OF THE TEST PIT. A NOTE OR NOTES CONTAINING THE RESULTS OF THE TEST PIT OR PITS IS INCLUDED ON THE DRAWINGS. EXISTING UTILITIES IN THE VICINITY OF THE PROPOSED WORK FOR WHICH TEST PITS HAVE BEEN DUG SHALL BE VERIFIED BY THE CONTRACTOR TO HIS OWN SATISFACTION. ANY DAMAGE TO EXISTING FACILITIES DUE TO THE CONTRACTOR'S NEGLIGENCE SHALL BE REPAIRED AT THE CONTRACTOR'S EXPENSE.
- CONTRACTOR SHALL NOTIFY THE FOLLOWING UTILITIES OR AGENCIES AT LEAST FIVE WORKING DAYS BEFORE STARTING WORK SHOWN ON THIS PLANS:
 - STATE HIGHWAY ADMINISTRATION : 531-5533
 - BALTIMORE GAS & ELECTRIC CO. - CONTRACTOR SERVICES : 850-4620
 - UNDERGROUND DAMAGE CONTROL : 859-9004
 - TROUBLE SHOOTING : 298-9001
 - MISS UTILITY : 1-559-0100
 - COLONIAL PIPELINE COMPANY : 795-1390
 - C&P TELEPHONE COMPANY : 1-800-257-7777
 - BUREAU OF UTILITIES, HOWARD COUNTY DEPARTMENT OF PUBLIC WORKS : 313 - 4900
- TREES AND SHRUBS ARE TO BE PROTECTED FROM DAMAGE TO MAXIMUM EXTENT. TREES AND SHRUBS LOCATED WITHIN THE CONSTRUCTION STRIP ARE NOT TO BE REMOVED OR DAMAGE BY THE CONTRACTOR.
- CONTRACTOR SHALL REMOVE TREES, STUMPS AND ROOTS ALONG LINE OF EXCAVATION. PAYMENT FOR SUCH REMOVAL SHALL BE INCLUDED IN THE UNIT PRICE BID FOR CONSTRUCTION OF THE MAIN.
- ALL WATER MAINS TO BE D.I.P. CLASS 52 UNLESS OTHERWISE NOTED.
- TOPS OF ALL WATER MAINS TO HAVE A MINIMUM OF 3-1/2" COVER UNLESS OTHERWISE NOTED.
- VALVES ADJACENT TO TEES SHALL BE STRAPPED TO TEES.
- ALL FITTINGS SHALL BE BUTTRESSED OR ANCHORED WITH CONCRETE IN ACCORDANCE WITH THE STANDARD DETAILS UNLESS OTHERWISE PROVIDED FOR ON THE DRAWINGS.
- FIRE HYDRANTS SHALL BE SET TO THE BURY LINE ELEVATIONS SHOWN ON THE DRAWINGS. ALL FIRE HYDRANTS SHALL BE RESTRAINED AND BUTTRESSED WITH CONCRETE IN ACCORDANCE WITH THE STANDARD DETAILS. SOIL AROUND THE FIRE HYDRANT SHALL BE COMPACTED IN ACCORDANCE WITH SECTION 100-2 & 1005 OF THE STANDARD SPECIFICATIONS. REFERENCE STD. DETAILS W.1.11 & 2.13.
- THE CONTRACTOR SHALL NOT OPERATE ANY WATER MAIN VALVES ON THE EXISTING WATER SYSTEM.
- ALL WATER HOUSE CONNECTIONS SHALL BE FOR INSIDE METER SETTING, UNLESS OTHERWISE NOTED ON THE PLANS OR IN THE SPECIFICATIONS (STD. DETAIL W 3.21)
- WATER MAINS OR WATER HOUSE CONNECTION LINES MUST BE PLACED SO AS TO HAVE AT LEAST ONE (1) FOOT SEPARATION FROM THE SEWER MAIN OR SEWER HOUSE CONNECTION AS THEY PASS ABOUT IT.
- MANHOLES DESIGNATED W.T. IN PLAN AND PROFILE SHALL HAVE WATER TIGHT FRAME AND COVERS STANDARD DETAIL G 5.52 WHERE WATERTIGHT MANHOLE FRAME AND COVER IS USED, SET TOP OF FRAME 1'-6" ABOVE FINISHED GRADE UNLESS OTHERWISE NOTED ON THE DRAWINGS.
- ALL SEWER MAINS SHALL BE C.S.P.X., R.C.S.P., V.C.P.X., OR P.V.C. UNLESS OTHERWISE NOTED.
- THE CONTRACTOR SHALL PROVIDE A JOINT IN ALL SEWER MAINS WITHIN 2'-0" OF EXTERIOR MANHOLE WALL.
- ALL MANHOLES SHALL BE 4'-0" INSIDE DIAMETER UNLESS OTHERWISE NOTED.
- MANHOLES SHOWN WITH 12" AND 16" WALLS ARE FOR BRICK MANHOLES ONLY.
- MANHOLES LOCATED WITHIN PROPOSED ROADWAY SHALL HAVE STANDARD HEAVY TRAFFIC MANHOLE FRAME AND COVER, STANDARD DETAIL G 5.51
- ALL D.I.P. FITTINGS SHALL BE IN ACCORDANCE WITH AWWA SPECIFICATION C-153 : DUCTILE IRON COMPACT FITTINGS, 3" THROUGH 12" FOR WATER & OTHER LIQUIDS.
- THE CONTRACTOR SHALL NOTIFY THE BUREAU OF HIGHWAYS, HOWARD COUNTY, AT (410) 313-2450 AT LEAST FIVE WORKING DAYS BEFORE ANY OPEN CUT OF ANY COUNTY ROAD OR BORING/JACKING OPERATION IN COUNTY ROADS FOR LAYING WATER/SEWER MAINS OR HOUSE CONNECTIONS. THE APPROVAL OF THESE DRAWINGS WILL CONSTITUTE COMPLIANCE WITH DPW REQUIREMENTS PER SECTION 18.114(c) OF THE HOWARD COUNTY CODE.

CONTRACT NO. 24-3060-D

MARTIN MEADOWS

WATER AND SEWER
MAIN EXTENSIONS

SECOND ELECTION DISTRICT

HOWARD COUNTY

MARYLAND

DEPARTMENT OF PUBLIC WORKS

THESE WATER AND SEWER CONSTRUCTION PLANS SUPERSEDE THE CONSTRUCTION PLANS APPROVED BY THE DIRECTOR OF PUBLIC WORKS ON 10/11/90. THE CONSTRUCTION PLANS OF 10/11/90 ARE VOID.

THIS DEVELOPMENT IS APPROVED FOR EROSION AND SEDIMENT CONTROL BY HOWARD SOIL CONSERVATION DISTRICT.

APPROVED: *John R. Robertson* 12/3/92
HOWARD SOIL CONSERVATION DISTRICT DATE

REVIEWED FOR HOWARD COUNTY SOIL CONSERVATION DISTRICT AND MEETS TECHNICAL REQUIREMENTS:
Jan M. Roberts 12/8/92
U.S. SOIL CONSERVATION SERVICE DATE

PLAN REFERENCE NUMBERS:
P-89-52
F-90-95

CONTRACT NO. 24-3060-D
MARTIN MEADOWS
LOTS 1-27 SECTION 1, AREA 1,
WATER & SEWER MAIN EXTENSIONS
ELECTION DISTRICT NO. TWO
HOWARD COUNTY, MARYLAND.

DEPARTMENT OF PUBLIC WORKS
HOWARD COUNTY, MARYLAND

James M. Lewis 12/10/92
DIRECTOR OF PUBLIC WORKS DATE

Elizabeth C. Culea 12/10/92
CHIEF, BUREAU OF ENGINEERING DATE

Robert M. Berman 12-1-92
CHIEF, BUREAU OF UTILITIES DATE

John D. Dawson 12/10/92
CHIEF, LAND DEVELOPMENT DIVISION DATE

FISHER, COLLINS & CARTER, INC.
CIVIL ENGINEERING CONSULTANTS &
LAND SURVEYORS
SUITE 100, 9171 BALTIMORE NATIONAL PIKE
ELLICOTT CITY, MARYLAND 21042
(410) 461-2855

TERRELL A. FISHER

STATE OF MARYLAND
NO. 9757
REGISTERED PROFESSIONAL ENGINEER

DES: M/JN/PWK	FC/CL	RELOCATED WATER & SEWER MAINS.	12/92.
DRWN: JS/MV	FC/CL	REVISED LOT LAYOUT & SEWER MAIN (MAIN 305 TO #357) ADD 4" W.M. BY LOTS 13 & 15	01/93.
CHK: PWK	FC/CL	RELOCATED MH #355 TO LOC TO LOTS 6, 7 & 8.	03/93.
DATE: NOV. '92			
BY NO.		REVISION	DATE

TITLE SHEET

600 SCALE MAP NO. 17 BLOCK NO. 19

MARTIN MEADOWS
LOTS 1-27
CONTRACT NO. 24-3060-D
ELECTION DISTRICT NO. 2
HOWARD COUNTY, MARYLAND.

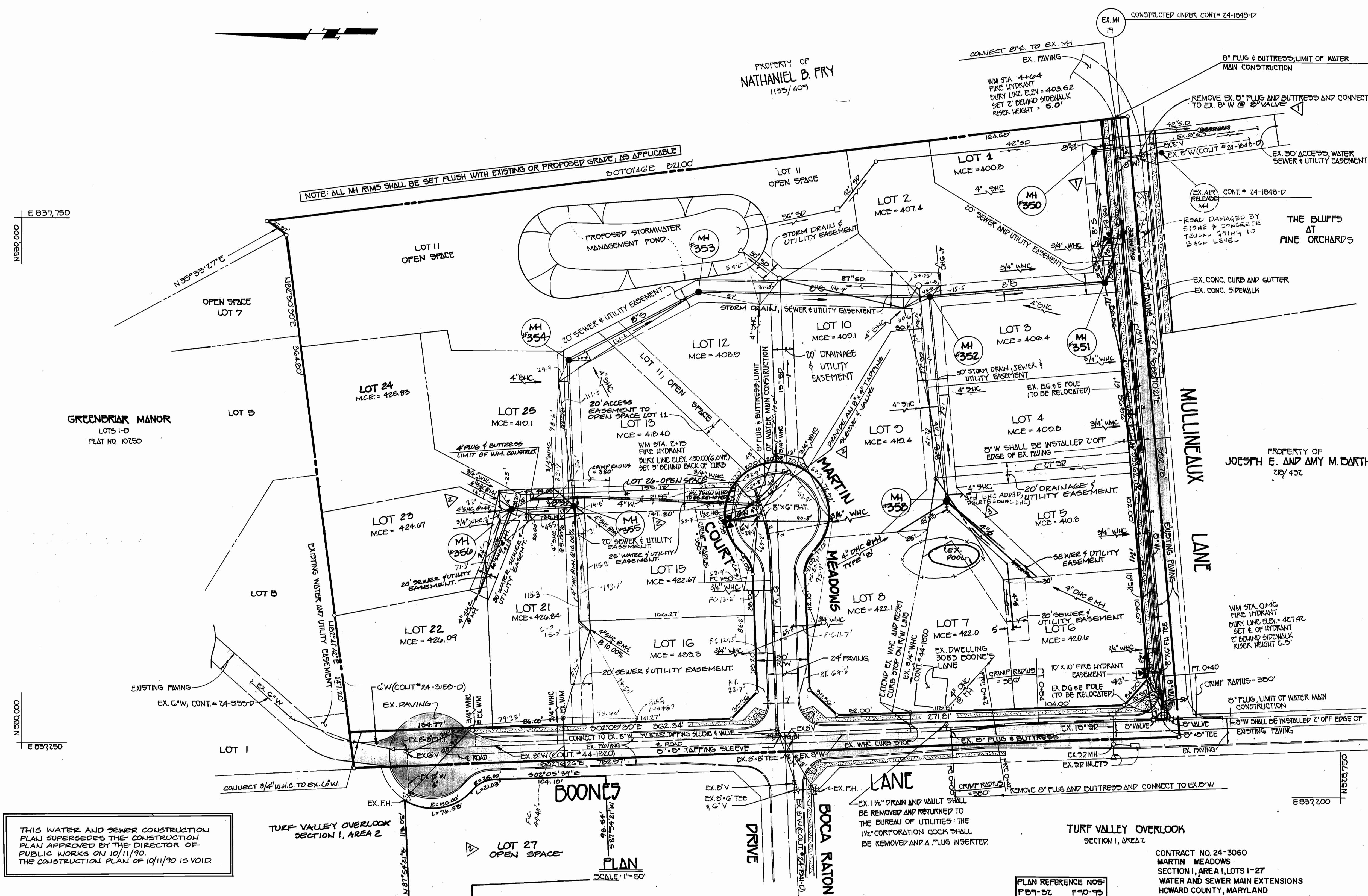
SCALE AS SHOWN

SHEET 1 OF 4

AS-BUILT

SEE SHEET 3 FOR PROFILES OF 8" SEWER MAINS
 SEE SHEET 3 FOR PROFILES OF 8" WATER MAINS IN BOONE'S LANE AND BOCA RATON COURT
 SEE SHEET 4 FOR PROFILE OF 8" WATER MAIN IN MULLINEAUX LANE

NOTE: EXISTING TWIN WHC TO LOTS 13 & 14 IS TO BE REMOVED.



STATION	LOT	ELEVATION
0+30 RT.	MH #350 TO MH #351	394.86
0+00 LT.	MH #351 TO MH #352	400.87
1+05 RT.	MH #352 TO MH #353	402.17
0+25 LT.	MH #353 TO MH #354	402.50
1+00 LT.	MH #354 TO MH #355	402.17
1+20 LT.	MH #355 TO MH #356	411.64
0+20 RT.	MH #356 TO MH #357	413.67
MH #352 TO MH #353		
0+05 LT.	4	403.05
1+05 RT.	0	413.20
1+70 LT.	5	405.44
@ MH 353 RT.	8	417.12
@ MH 352	9	417.08
@ MH 350 LT.	6	414.14
MH #355 TO MH #356		
@ MH 355 LT.	15	418.73 (10.00)
@ MH 355 RT.	16	423.27 (15.00)
0+15 LT.	21	419.24
@ MH 356 LT.	22	422.91
@ MH 356 RT.	23	422.07
@ MH 356 RT.	24	421.13

THIS WATER AND SEWER CONSTRUCTION PLAN SUPERSEDES THE CONSTRUCTION PLAN APPROVED BY THE DIRECTOR OF PUBLIC WORKS ON 10/11/90. THE CONSTRUCTION PLAN OF 10/11/90 IS VOID.

DEPARTMENT OF PUBLIC WORKS
 HOWARD COUNTY, MARYLAND
 Director of Public Works: *James M. Lee* 12/10/92
 Chief, Bureau of Engineering: *Elizabeth D. Pake* 12/10/92
 Chief, Bureau of Utilities: *Robert M. Beiser* 12-1-92
 Chief, Land Development Division: *John A. ...* 12/10/92

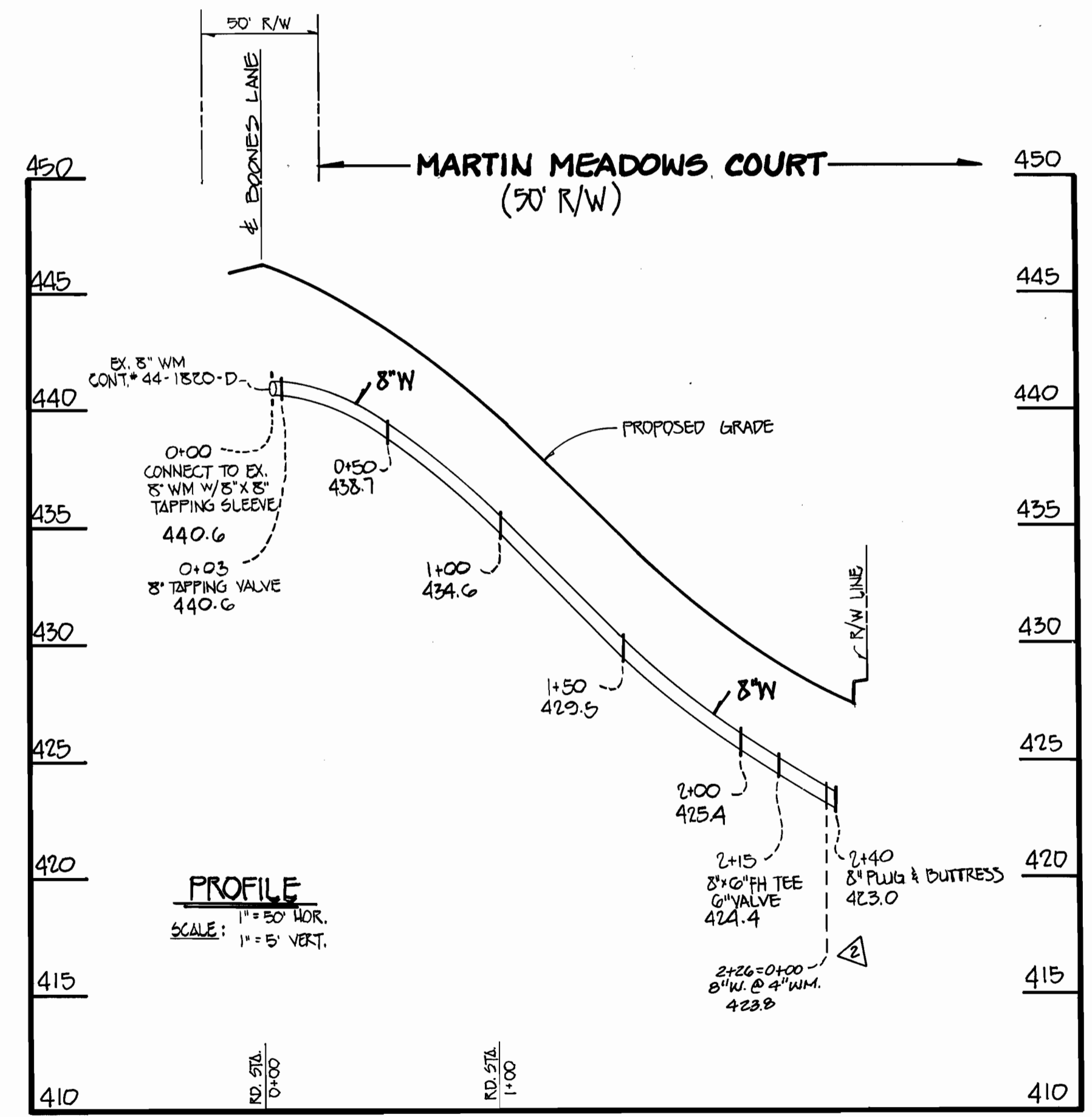
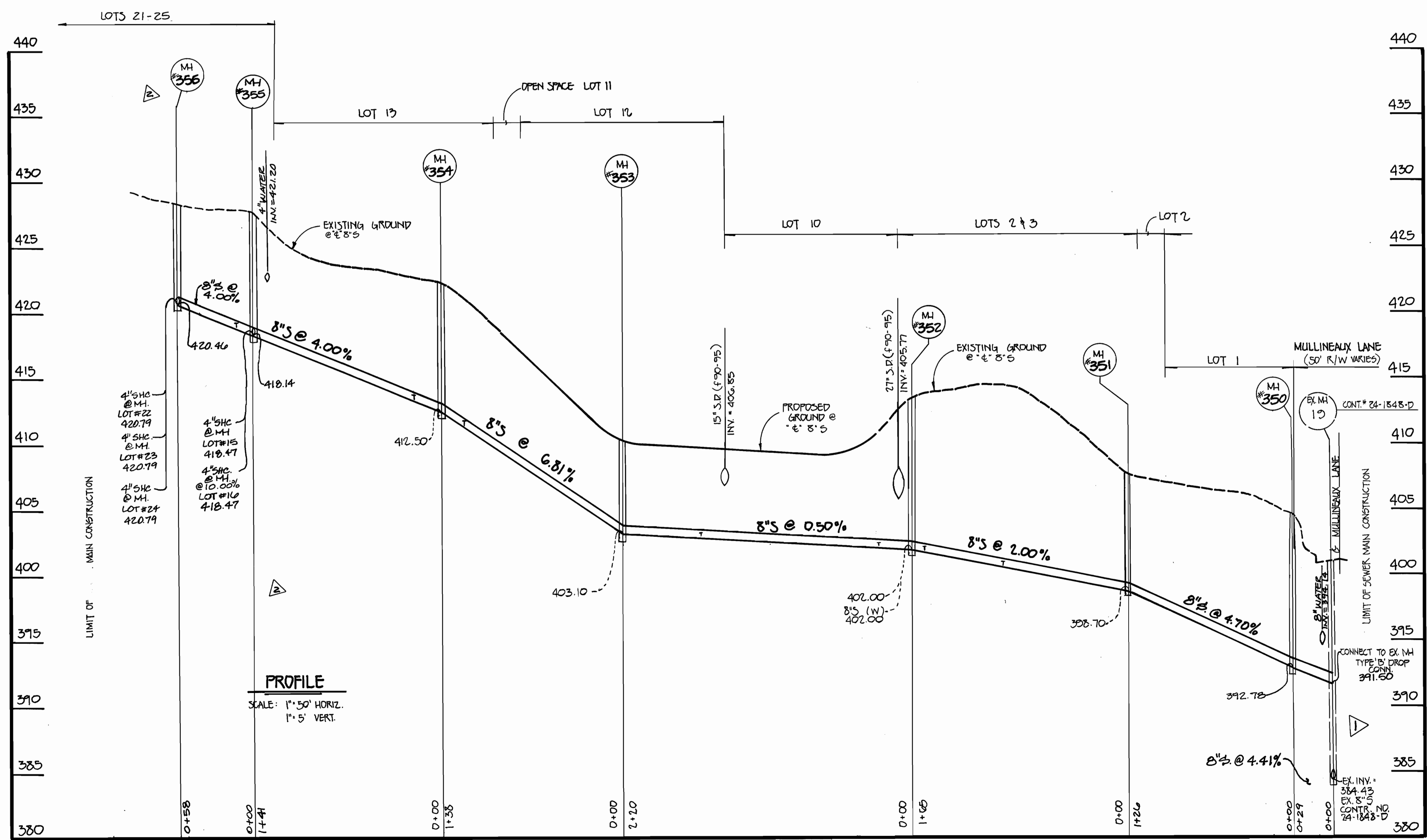
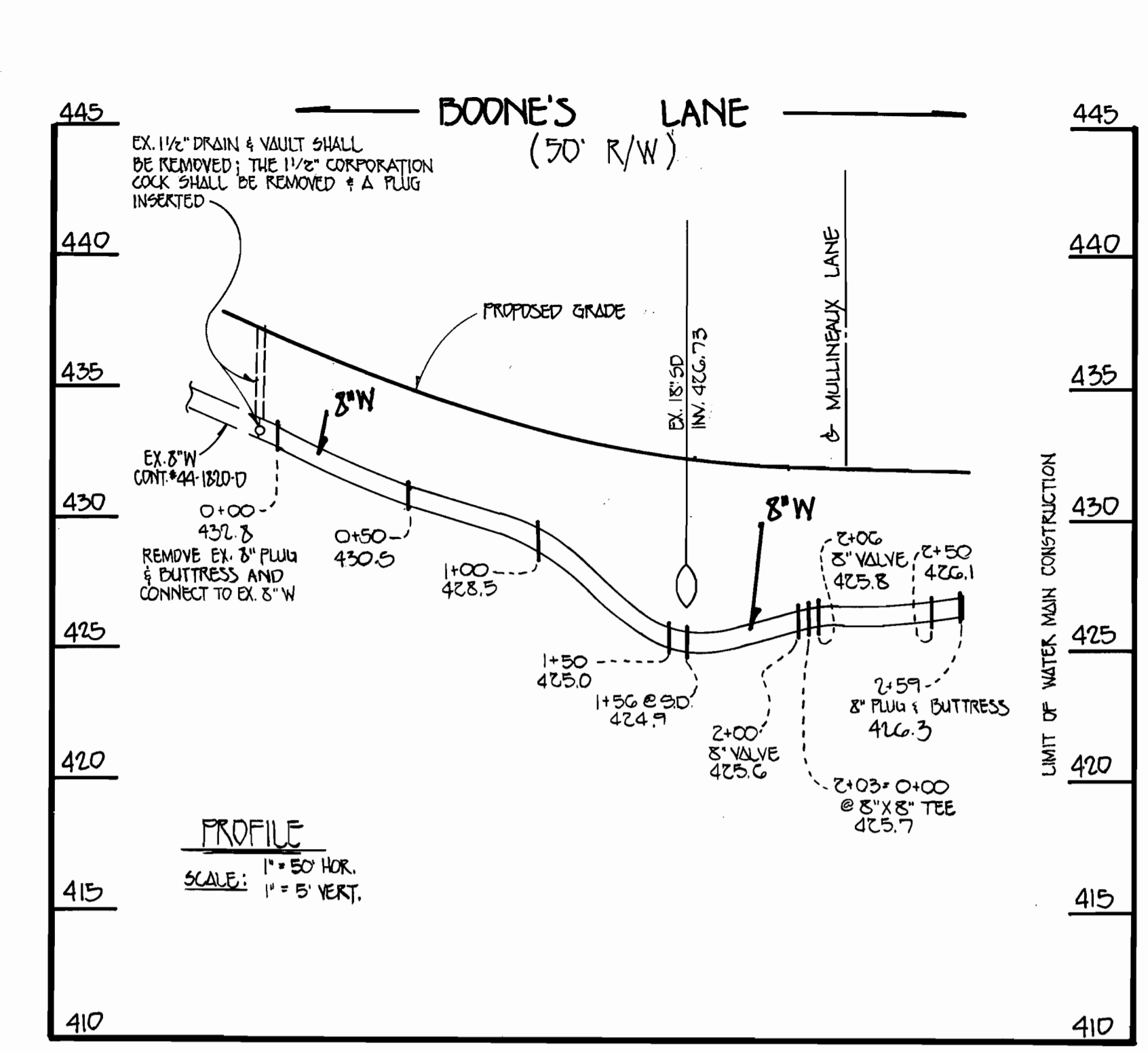
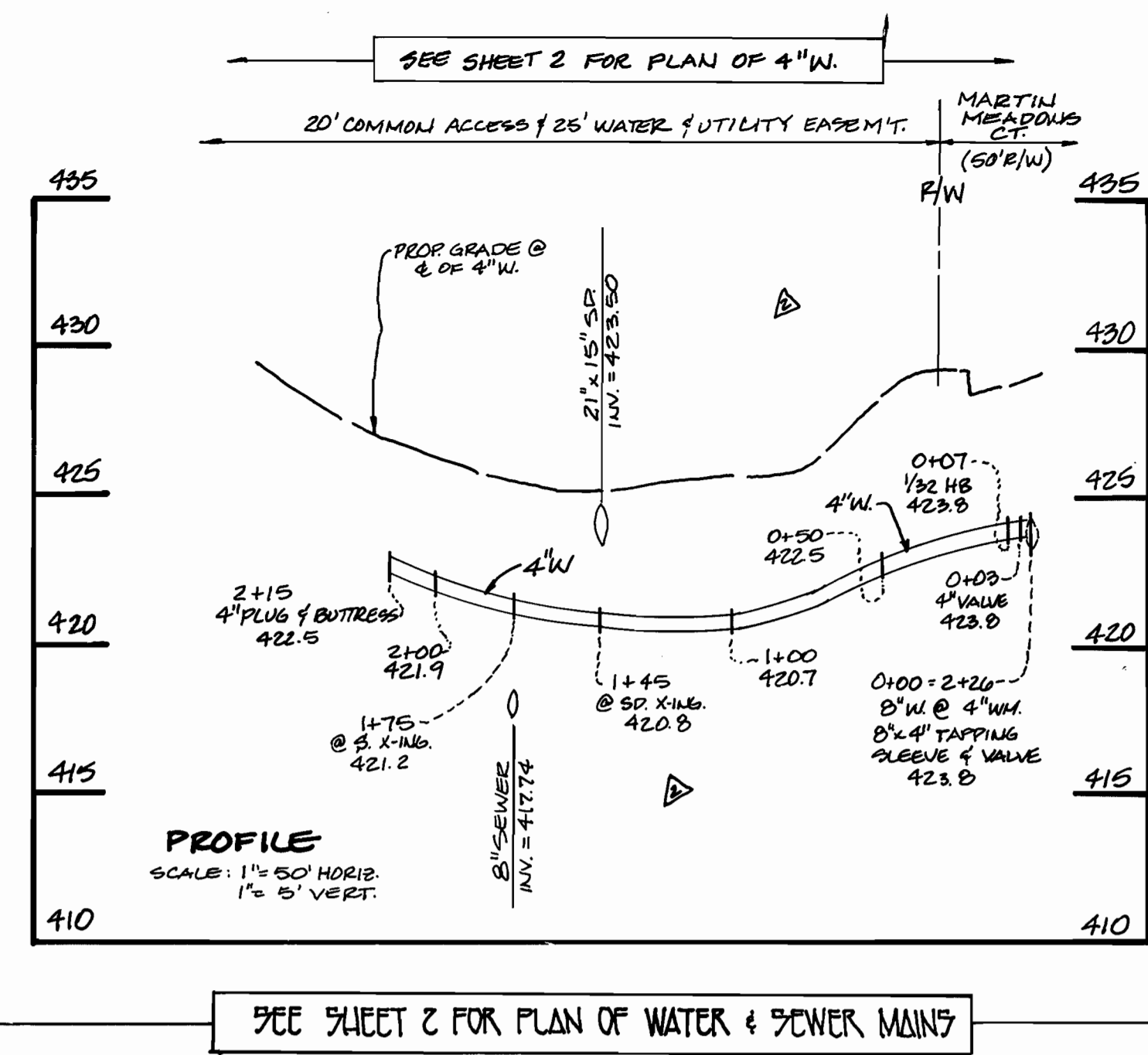
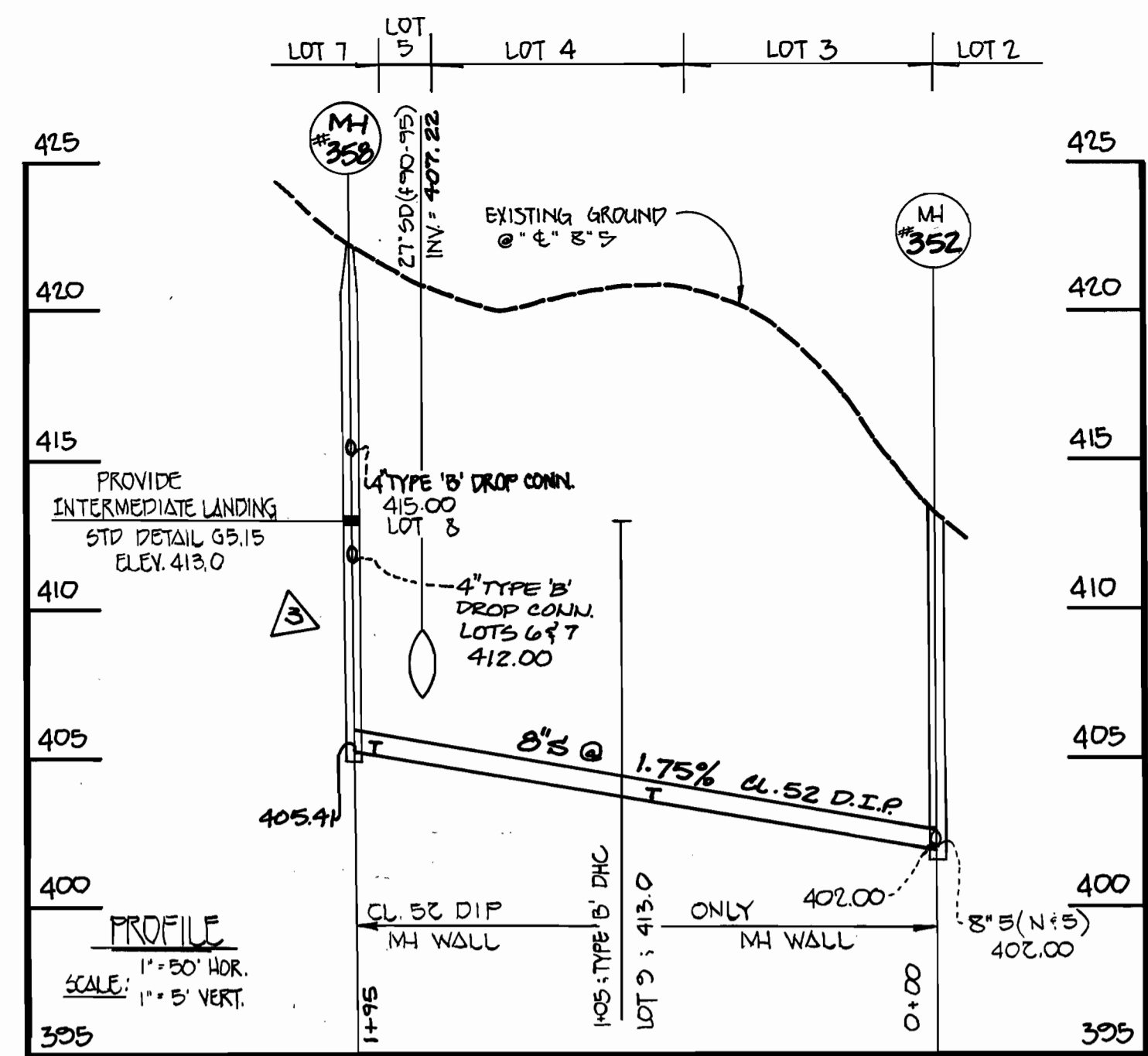
FISHER, COLLINS, AND CARTER, INC.
 CONSULTING ENGINEERS AND LAND SURVEYORS
 9171 BALTIMORE NATIONAL PIKE
 ELLICOTT CITY, MARYLAND 21042
 (410) 461-2855



DES:	MJM	FC:c.	12/92
DRN:	JMM <td>FC:c. <td>01/93</td> </td>	FC:c. <td>01/93</td>	01/93
CHK:	PWK <td></td> <td>03/93</td>		03/93
DATE:	BY	NO.	REVISION

WATER AND SEWER MAINS PLAN
 600' SCALE MAP NO. 17 BLOCK NO. 19

MARTIN MEADOWS
 SECTION I, AREA 1, LOTS 1-27
 CONTRACT NO. 24-3060-D
 SECOND ELECTION DISTRICT
 HOWARD COUNTY, MARYLAND
 SCALE AS SHOWN
 SHEET 2 OF 4
 AS-BUILT



THIS WATER AND SEWER CONSTRUCTION PLAN SUPERSEDES THE CONSTRUCTION PLAN APPROVED BY THE DIRECTOR OF PUBLIC WORKS ON 10/11/90. THE CONSTRUCTION PLAN OF 10/11/90 IS VOID.

CONTRACT NO. 24-3060-D
MARTIN MEADOWS
SECTION I, AREA I, LOTS 1-27
WATER AND SEWER MAIN EXTENSIONS
HOWARD COUNTY, MARYLAND

DEPARTMENT OF PUBLIC WORKS
HOWARD COUNTY, MARYLAND
12-10-92
12-1-92

FISHER, COLLINS, AND CARTER, INC.
CONSULTING ENGINEERS AND LAND SURVEYORS
9711 BALTIMORE NATIONAL PKE : SUITE 100
ELLCOTT CITY, MARYLAND 21043
12/14/92

DES: MM	FC. 12	RELOCATED WATER & SEWER MAINS	12/92
DRN: MM	FC. 12	REVISED LOT LAYOUT & SEWER MAIN (M.H. #356 TO M.H. #357)	01/93
CHK: JAF	FC. 10	ADD 4\"/>	
DATE: 12/24/92	BY NO.	REVISION	DATE

PROFILES
WATER & SEWER MAINS
600' SCALE MAP NO. 17 BLOCK NO. 19

MARTIN MEADOWS
SECTION I, AREA I, LOTS 1-27
CONTRACT NO. 24-3060-D
SECOND ELECTION DISTRICT
HOWARD COUNTY, MARYLAND
SCALE AS SHOWN
SHEET 3 OF 4
AS-BUILT

