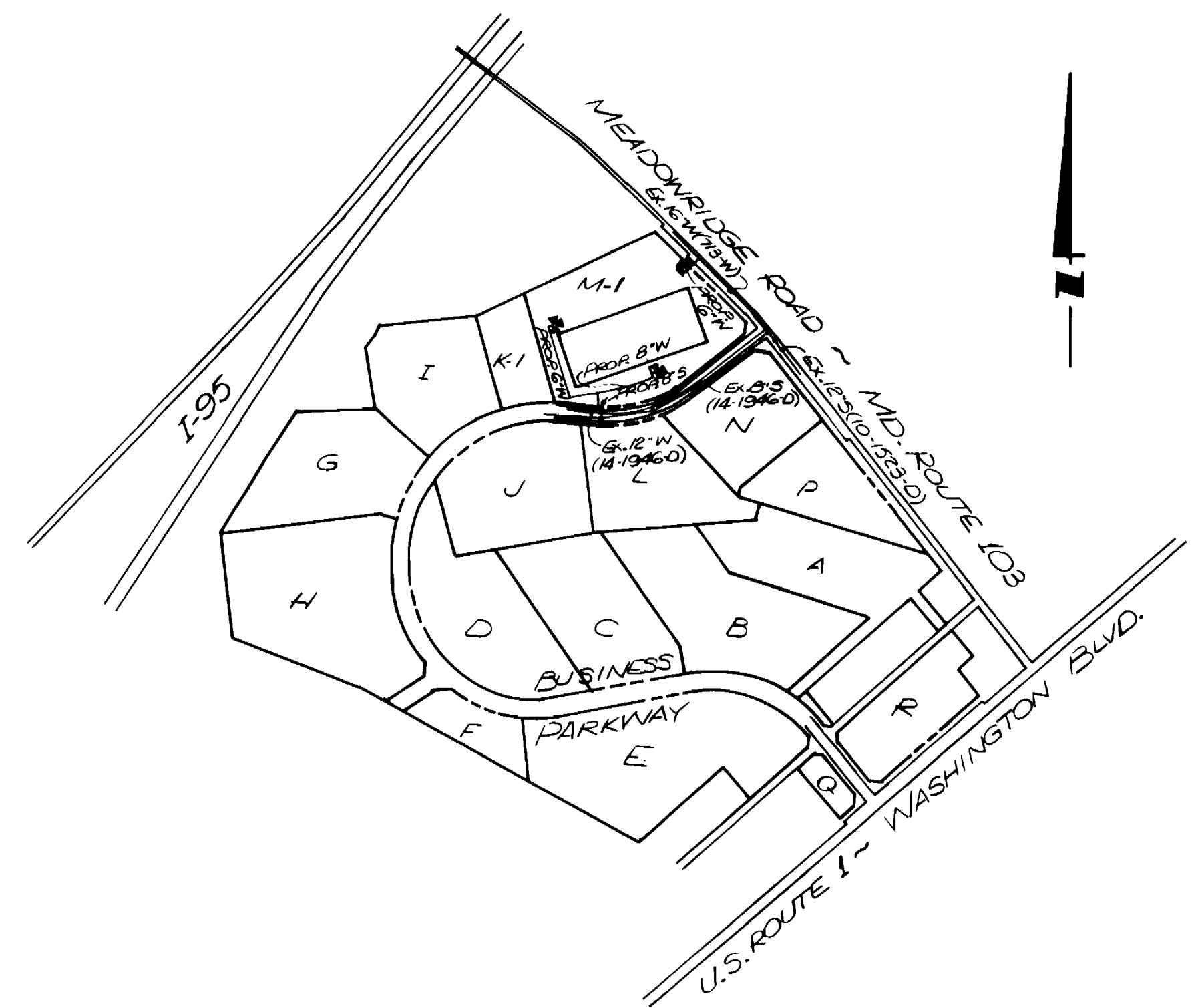


QUANTITIES			
ITEM	BID	AS-BUILT	MATERIAL / SUPPLIER
6" WATER MAIN	135L.F.	125.00	ALUMINUM 20' / A91
5.0" FIRE HYDRANT	022L.F.	21.00	ALUMINUM 20' / A91
5.0" FIRE HYDRANT	1	1	WELLS / A91
7.5" FIRE HYDRANT	1	1	WELLS / A91
5.5" FIRE HYDRANT	1	1	WELLS / A91
8" SANITARY SEWER	10L.F.	10.00	CLAY / A91
6" SANITARY SEWER	13L.F.	13.00	CORUGATED / A91
6" G.T.	3	3	TYLOR / A91
6" VALVE	3	3	TYLOR / A91
6" 1/2" VERT. BEND	2	2	TYLOR / A91
6" PLUS (WATER)	1	1	TYLOR / A91
6" 8" T.	2	2	TYLOR / A91
6" PLUS (SEWER)	1	1	NOT USED
6" G. REDUCER	1	1	TYLOR / A91
6" CAP	1	1	TYLOR / A91
6" 1/2" BEND	1	1	TYLOR / A91
6" VALVE	3	3	TYLOR / A91
6" G.T.	1	1	TYLOR / A91
6" PLUS	1	1	NOT USED

B.M.#L-1 ELEV. 206.14  
 BONNETT BOLT ON F.H. NORTH SIDE OF MEADOWRIDGE RD. 2 1/2' E EAST OF 35' G. POLE # 384753 ON THE NORTH SIDE OF MEADOWRIDGE RD. 180' WEST OF BUSINESS PARKWAY.

B.M.#L-2 ELEV. 207.91  
 60" D NAIL SET ON THE SOUTH SIDE OF 65' G. POLE # 384753 ON THE NORTH SIDE OF MEADOWRIDGE RD. 180' WEST OF BUSINESS PARKWAY.

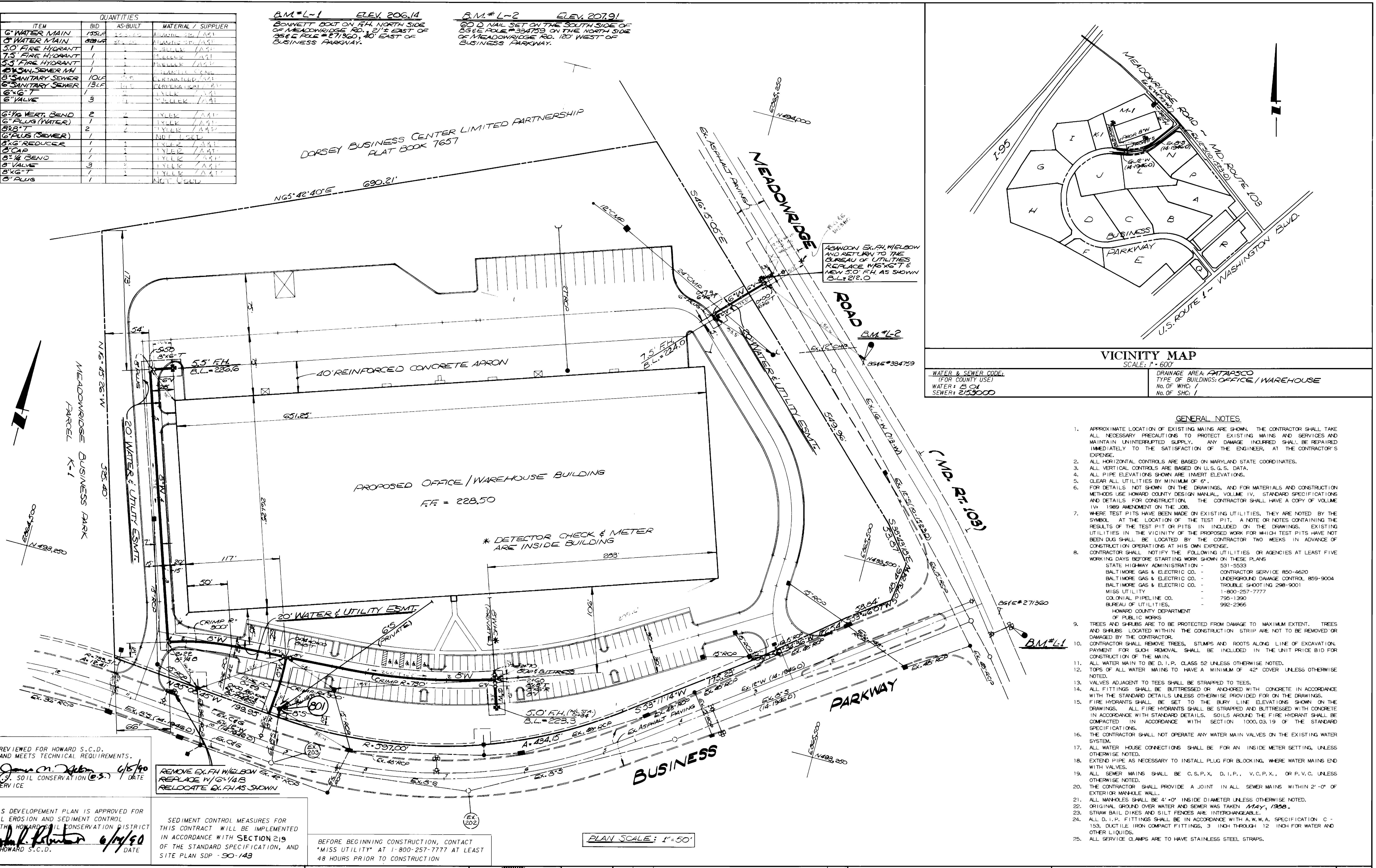
DORSEY BUSINESS CENTER LIMITED PARTNERSHIP  
 PLAT BOOK 7657



VICINITY MAP  
 SCALE: 1" = 600'

WATER & SEWER CODE:  
 (FOR COUNTY USE)  
 WATER: B 04  
 SEWER: 213000

DRAINAGE AREA: ANTARSCO  
 TYPE OF BUILDINGS: OFFICE / WAREHOUSE  
 No. OF WHC: /  
 No. OF SHC: /



GENERAL NOTES

- APPROXIMATE LOCATION OF EXISTING MAINS ARE SHOWN. THE CONTRACTOR SHALL TAKE ALL NECESSARY PRECAUTIONS TO PROTECT EXISTING MAINS AND SERVICES AND MAINTAIN UNINTERRUPTED SUPPLY. ANY DAMAGE INCURRED SHALL BE REPAIRED IMMEDIATELY TO THE SATISFACTION OF THE ENGINEER, AT THE CONTRACTOR'S EXPENSE.
- ALL HORIZONTAL CONTROLS ARE BASED ON MARYLAND STATE COORDINATES.
- ALL VERTICAL CONTROLS ARE BASED ON U.S.G.S. DATA.
- ALL PIPE ELEVATIONS SHOWN ARE INVERT ELEVATIONS.
- CLEAR ALL UTILITIES BY MINIMUM OF 6".
- FOR DETAILS NOT SHOWN ON THE DRAWINGS, AND FOR MATERIALS AND CONSTRUCTION METHODS USE HOWARD COUNTY DESIGN MANUAL, VOLUME IV, STANDARD SPECIFICATIONS AND DETAILS FOR CONSTRUCTION. THE CONTRACTOR SHALL HAVE A COPY OF VOLUME IV, 1989 AMENDMENT ON THE JOB.
- WHERE TEST PITS HAVE BEEN MADE ON EXISTING UTILITIES, THEY ARE NOTED BY THE SYMBOL AT THE LOCATION OF THE TEST PIT. A NOTE OR NOTES CONTAINING THE RESULTS OF THE TEST PIT OR PITS IS INCLUDED ON THE DRAWINGS. EXISTING UTILITIES IN THE VICINITY OF THE PROPOSED WORK FOR WHICH TEST PITS HAVE NOT BEEN DUG SHALL BE LOCATED BY THE CONTRACTOR TWO WEEKS IN ADVANCE OF CONSTRUCTION OPERATIONS AT HIS OWN EXPENSE.
- CONTRACTOR SHALL NOTIFY THE FOLLOWING UTILITIES OR AGENCIES AT LEAST FIVE WORKING DAYS BEFORE STARTING WORK SHOWN ON THESE PLANS:
  - STATE HIGHWAY ADMINISTRATION - 531-5533
  - BALTIMORE GAS & ELECTRIC CO. - CONTRACTOR SERVICE 850-4620
  - BALTIMORE GAS & ELECTRIC CO. - UNDERGROUND DAMAGE CONTROL 859-9004
  - BALTIMORE GAS & ELECTRIC CO. - TROUBLE SHOOTING 298-9001
  - MISS UTILITY - 1-800-257-7777
  - COLONIAL PIPELINE CO. - 795-1390
  - BUREAU OF UTILITIES - 992-2366
  - HOWARD COUNTY DEPARTMENT OF PUBLIC WORKS
- TREES AND SHRUBS ARE TO BE PROTECTED FROM DAMAGE TO MAXIMUM EXTENT. TREES AND SHRUBS LOCATED WITHIN THE CONSTRUCTION STRIP ARE NOT TO BE REMOVED OR DAMAGED BY THE CONTRACTOR.
- CONTRACTOR SHALL REMOVE TREES, STUMPS AND ROOTS ALONG LINE OF EXCAVATION. PAYMENT FOR SUCH REMOVAL SHALL BE INCLUDED IN THE UNIT PRICE BID FOR CONSTRUCTION OF THE MAIN.
- ALL WATER MAIN TO BE D.I.P. CLASS 52 UNLESS OTHERWISE NOTED.
- TOPS OF ALL WATER MAINS TO HAVE A MINIMUM OF 42" COVER UNLESS OTHERWISE NOTED.
- VALVES ADJACENT TO TEES SHALL BE STRAPPED TO TEES.
- ALL FITTINGS SHALL BE BUTTRESSED OR ANCHORED WITH CONCRETE IN ACCORDANCE WITH THE STANDARD DETAILS UNLESS OTHERWISE PROVIDED FOR ON THE DRAWINGS.
- FIRE HYDRANTS SHALL BE SET TO THE BURY LINE ELEVATIONS SHOWN ON THE DRAWINGS. ALL FIRE HYDRANTS SHALL BE STRAPPED AND BUTTRESSED WITH CONCRETE IN ACCORDANCE WITH STANDARD DETAILS. SOILS AROUND THE FIRE HYDRANT SHALL BE COMPACTED IN ACCORDANCE WITH SECTION 1000.03.19 OF THE STANDARD SPECIFICATIONS.
- THE CONTRACTOR SHALL NOT OPERATE ANY WATER MAIN VALVES ON THE EXISTING WATER SYSTEM.
- ALL WATER HOUSE CONNECTIONS SHALL BE FOR AN INSIDE METER SETTING, UNLESS OTHERWISE NOTED.
- EXTEND PIPE AS NECESSARY TO INSTALL PLUG FOR BLOCKING, WHERE WATER MAINS END WITH VALVES.
- ALL SEWER MAINS SHALL BE C.S.P.X., D.I.P., V.C.P.X., OR P.V.C. UNLESS OTHERWISE NOTED.
- THE CONTRACTOR SHALL PROVIDE A JOINT IN ALL SEWER MAINS WITHIN 2'-0" OF EXTERIOR MANHOLE WALL.
- ALL MANHOLES SHALL BE 4' \* 0" INSIDE DIAMETER UNLESS OTHERWISE NOTED.
- ORIGINAL GROUND OVER WATER AND SEWER WAS TAKEN MAY, 1988.
- STRAW BAIL DICES AND SILT FENCES ARE INTERCHANGEABLE.
- ALL D.I.P. FITTINGS SHALL BE IN ACCORDANCE WITH A.W.W.A. SPECIFICATION C-153, DUCTILE IRON COMPACT FITTINGS, 3" INCH THROUGH 12" INCH FOR WATER AND OTHER LIQUIDS.
- ALL SERVICE CLAMPS ARE TO HAVE STAINLESS STEEL STRAPS.

REVIEWED FOR HOWARD S.C.D. AND MEETS TECHNICAL REQUIREMENTS.  
 James M. Deaton 6/5/90  
 SOIL CONSERVATION (C.S.) DATE SERVICE

REMOVE EX. F.H. WELDBOW EX. 42' REC  
 REPLACE W/ 6" 1/2" B  
 RELOCATE EX. F.H. AS SHOWN

THIS DEVELOPMENT PLAN IS APPROVED FOR SOIL EROSION AND SEDIMENT CONTROL BY THE HOWARD COUNTY SOIL CONSERVATION DISTRICT  
 John R. Koster 6/14/90  
 HOWARD S.C.D. DATE

SEDIMENT CONTROL MEASURES FOR THIS CONTRACT WILL BE IMPLEMENTED IN ACCORDANCE WITH SECTION 219 OF THE STANDARD SPECIFICATION, AND SITE PLAN SDP - 90-143

BEFORE BEGINNING CONSTRUCTION, CONTACT 'MISS UTILITY' AT 1-800-257-7777 AT LEAST 48 HOURS PRIOR TO CONSTRUCTION

PLAN SCALE: 1" = 50'

DEPARTMENT OF PUBLIC WORKS  
 HOWARD COUNTY, MARYLAND  
 Director of Public Works: James M. Deaton 6-12-90  
 Chief, Bureau of Engineering: [Signature] [Date]  
 Chief, Land Development Division: [Signature] [Date]

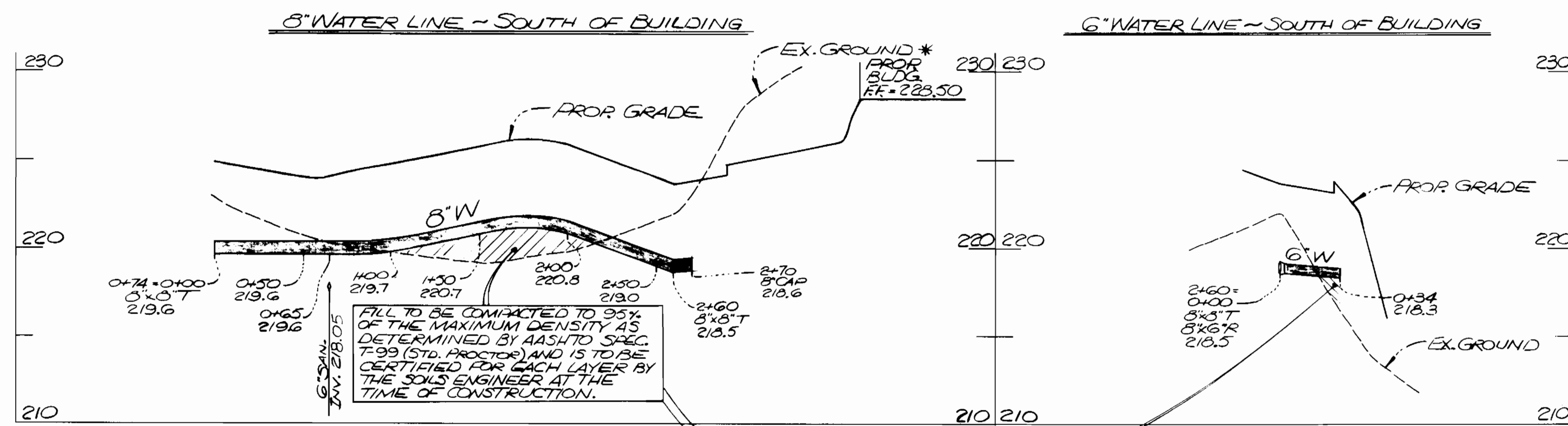
ENGINEERS-ARCHITECTS-PLANNERS-SCIENTISTS-SURVEYORS-PHOTOGRAMMETRISTS  
 GREENHORNE & O'MARA, INC.  
 113 WEST ROAD, SUITE 208  
 BALTIMORE, MD. 21204  
 PHONE (301) 296-4100



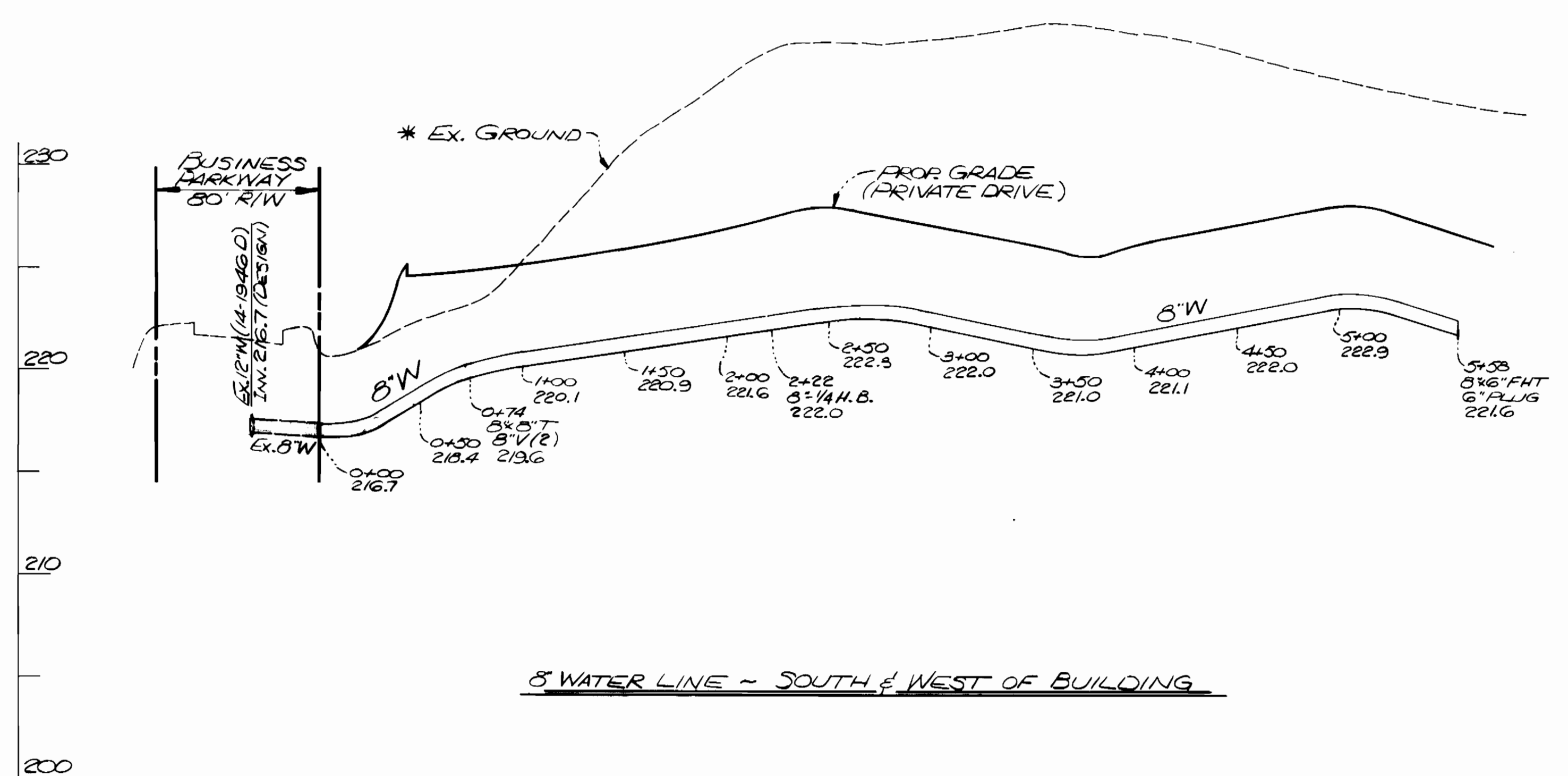
DES: JDP	BY NO.	REVISIONS	DATE
DRN: JDP/ltm			
CHK: RHM			
DATE: JUN, 90			

PLAN FOR SEWER & WATER MAIN EXTENSION  
 600' SCALE MAP NO. 37  
 BLOCK NO. 22

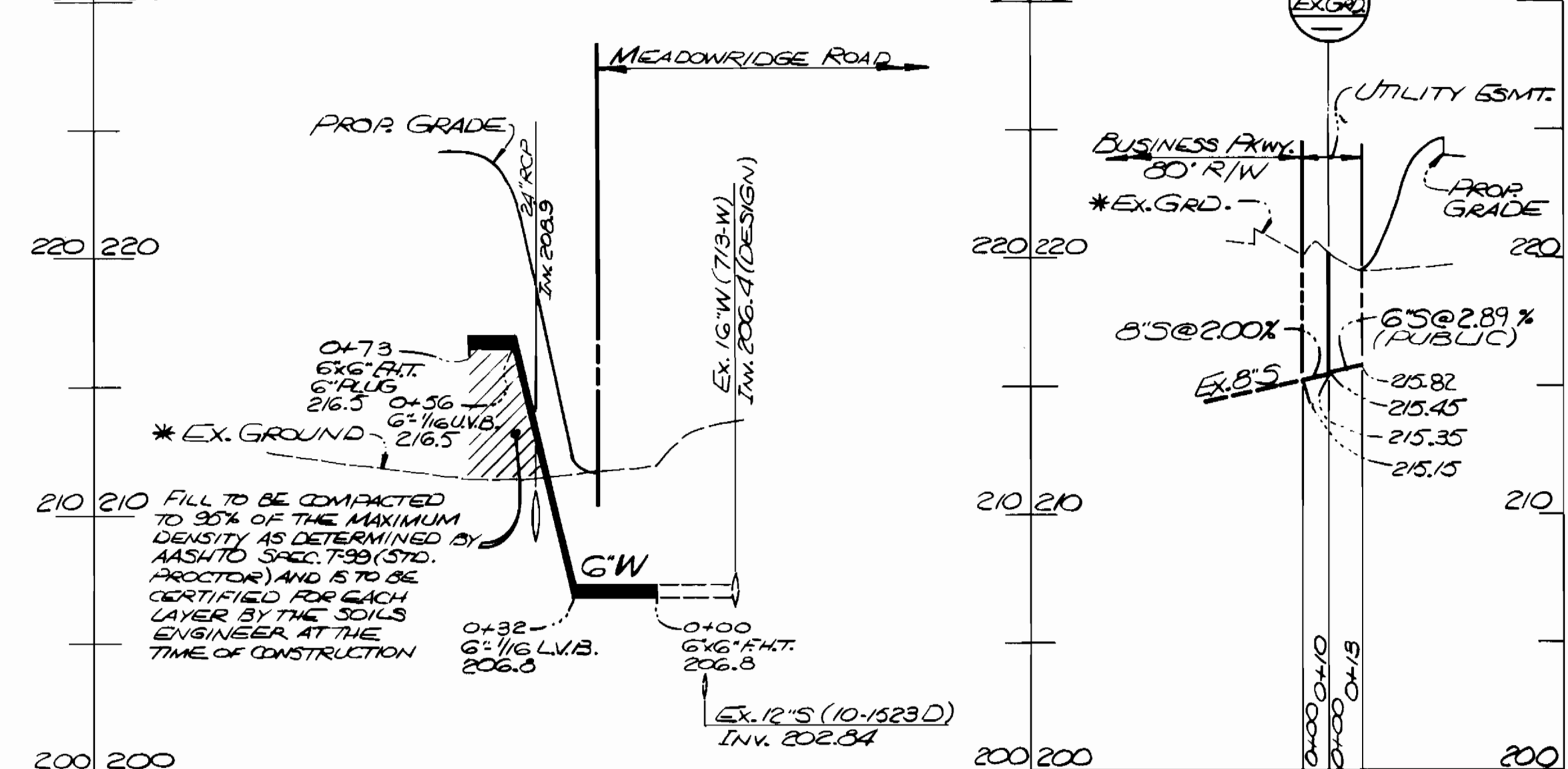
PARCEL M - 1  
 MEADOWRIDGE BUSINESS PARK  
 TAX MAP 37  
 CONTRACT No. 14-3044-D  
 FIRST ELECTION DISTRICT HOWARD CO., MARYLAND  
 SCALES AS SHOWN  
 SHEET 1 OF 2



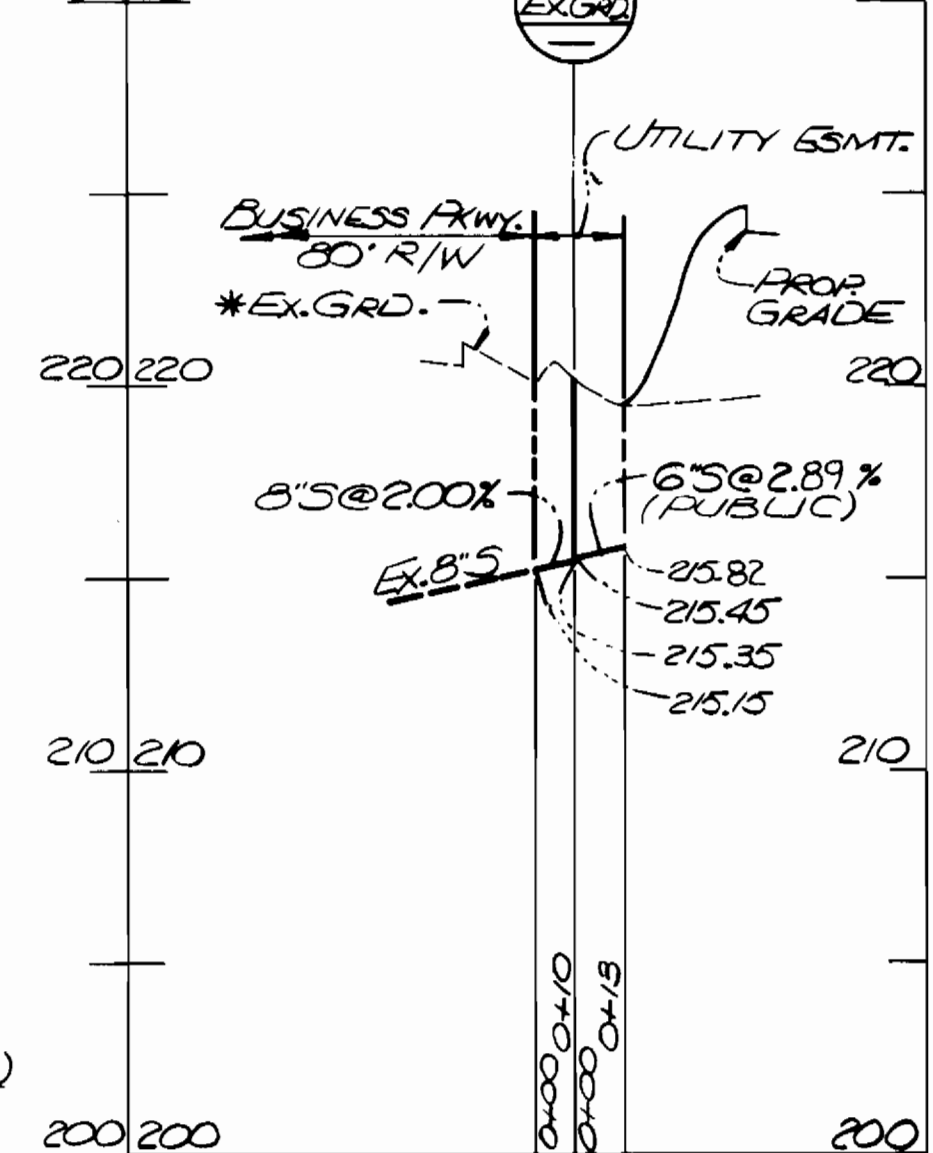
6" WATER LINE - SOUTH OF BUILDING



6" WATER - NE OF BUILDING



8" WATER - NE OF BUILDING



\* SURVEY DATE: MAY, 1988

REVIEWED FOR HOWARD S.C.D. AND MEETS TECHNICAL REQUIREMENTS.  
James M. Helms (S) 6/15/90  
SOIL CONSERVATION SERVICE

THIS DEVELOPMENT PLAN IS APPROVED FOR SOIL EROSION AND SEDIMENT CONTROL BY THE HOWARD SOIL CONSERVATION DISTRICT  
John K. Roberts 6/14/90  
HOWARD S.C.D.

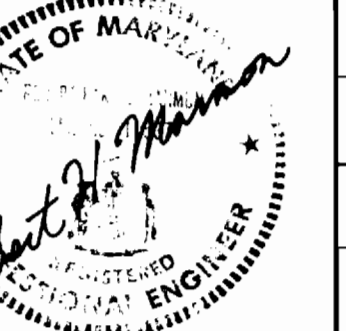
SEDIMENT CONTROL MEASURES FOR THIS CONTRACT WILL BE IMPLEMENTED IN ACCORDANCE WITH ARTICLE 15 OF THE STANDARD SPECIFICATION, AND SITE PLAN SOP - 90-143

BEFORE BEGINNING CONSTRUCTION, CONTACT "MISS UTILITY" AT 1-800-257-7777 AT LEAST 48 HOURS PRIOR TO CONSTRUCTION

PROFILE SCALE: HORIZ. 1" = 50'  
VERT. 1" = 5'

DEPARTMENT OF PUBLIC WORKS  
HOWARD COUNTY, MARYLAND  
Director of Public Works: 6/22/90  
Chief, Bureau of Engineering: 6/22/90  
Chief, Bureau of Utilities: 6-12-90  
Chief, Land Development Division: 6/22/90

ENGINEERS-ARCHITECTS-PLANNERS-SCIENTISTS-SURVEYORS-PHOTOGRAMMETRISTS  
GREENHORNE & O'MARA, INC.  
113 WEST ROAD, SUITE 208  
BALTIMORE, MD. 21204  
PHONE (301) 296-4100



DES: JDP			
DRN: JDP/lum			
CHK: RHM			
DATE: JAN, 90	BY NO.	REVISIONS	DATE

PROFILES FOR SEWER & WATER MAIN EXTENSION  
60' SCALE MAP NO. 37  
BLOCK NO. 22

PARCEL M-1  
MEADOWRIDGE BUSINESS PARK  
TAX MAP 37  
CONTRACT No. 14-3044-D  
FIRST ELECTION DISTRICT  
HOWARD CO., MARYLAND

SCALE: AS SHOWN  
SHEET 2 OF 2