

Match Line See Sheet 3 of 9

Plan
Scale: 1" = 50'

See Sheet 6 of 9 For Profile

DEPARTMENT OF PUBLIC WORKS
HOWARD COUNTY, MARYLAND

Michael J. ... 8/17/90
DIRECTOR OF PUBLIC WORKS

... 8/17/90
CHIEF, BUREAU OF UTILITIES

... 8/17/90
CHIEF, LAND DEVELOPMENT DIV.

GW GUTSCHICK LITTLE & WEBER, P.A.
ENGINEERS, PLANNERS, SURVEYORS

3909 NATIONAL DRIVE, SUITE 250, BURTONSVILLE OFFICE PARK
BURTONSVILLE, MD 20986
(301) 421-4024

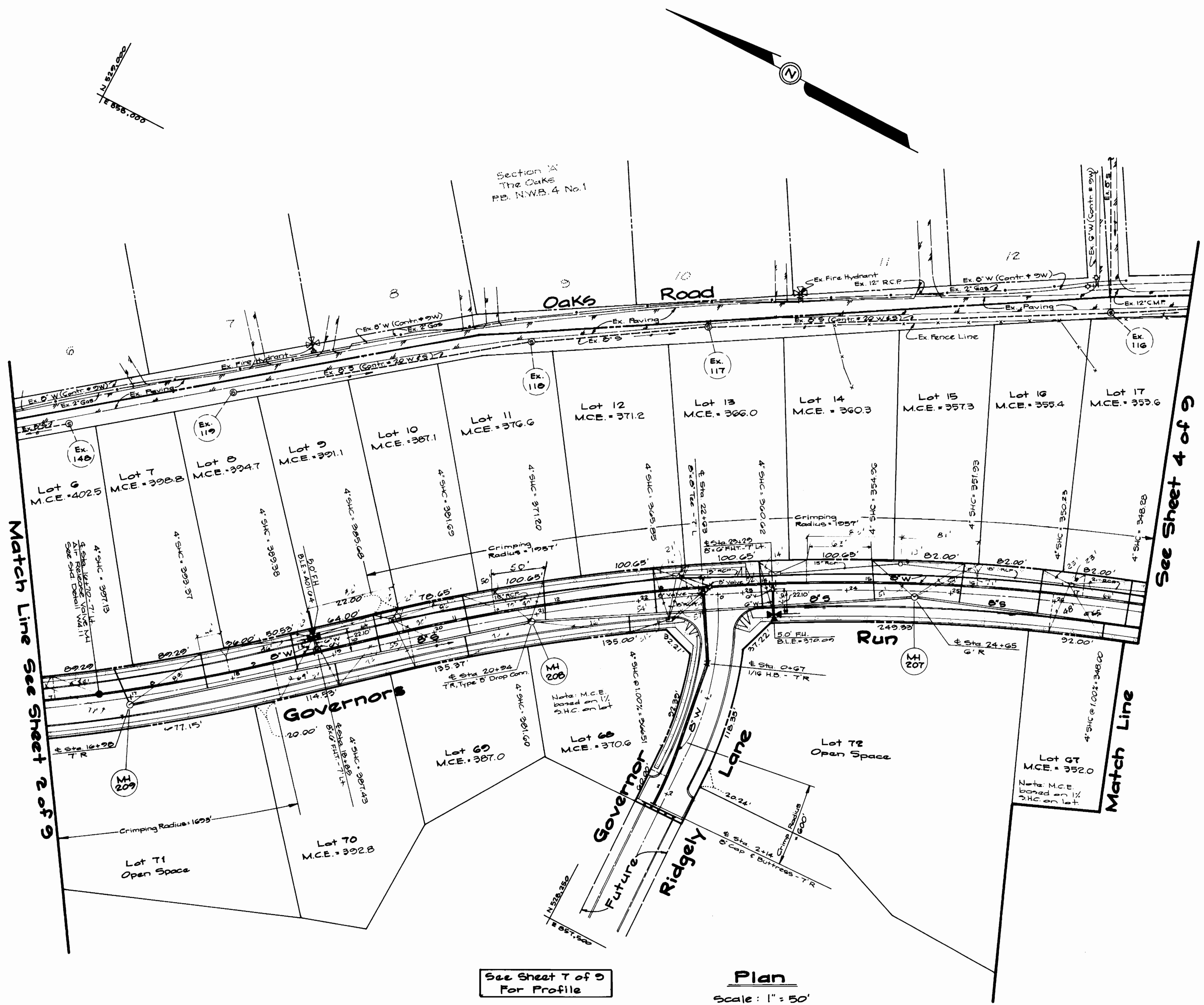
DES:	G.W.			
DRN:	G.W.			
CHK:	R.S.P.			
DATE:	July 1990	BY	NO.	REVISION
				1 rev lot frontages 8/11/90
				2 rev MH 228 & SHC inverts 8/11/90

Water and Sewer Main Plan

600' SCALE MAP NO. 18 BLOCK NO. 19 & 20

Governors Run
Section I Lots 1-73
2nd Election District
Howard County, Maryland
Contract No. 14-3037-D

SCALE AS SHOWN
SHEET 2 OF 2



See Sheet T of 9
For Profile

Plan
Scale: 1" = 50'

DEPARTMENT OF PUBLIC WORKS
HOWARD COUNTY, MARYLAND

Paul M. Ryan 8/17/90
DIRECTOR OF PUBLIC WORKS DATE

Michael A. ... 8-17-90
CHIEF, BUREAU OF UTILITIES DATE

... 8/17/90
CHIEF, LAND DEVELOPMENT DIV. DATE

GW GUTSCHICK LITTLE & WEBER, P.A.
ENGINEERS, PLANNERS, SURVEYORS

3909 NATIONAL DRIVE SUITE 200 BURTONTVILLE OFFICE PARK
BURTONTVILLE, MD. 20886
(301) 421-4024

C.K. ...

DES: G.W.			
DRN: G.W.			
CHK: R.S.P.	2	rev. frontage lot 71	6/1/91
	1	rev. paving widths & sidewalks; add notes & rev. SMC inventory	4/1/94
DATE: July 1990	BY: NO.	REVISION	DATE

Water and Sewer Main Plan

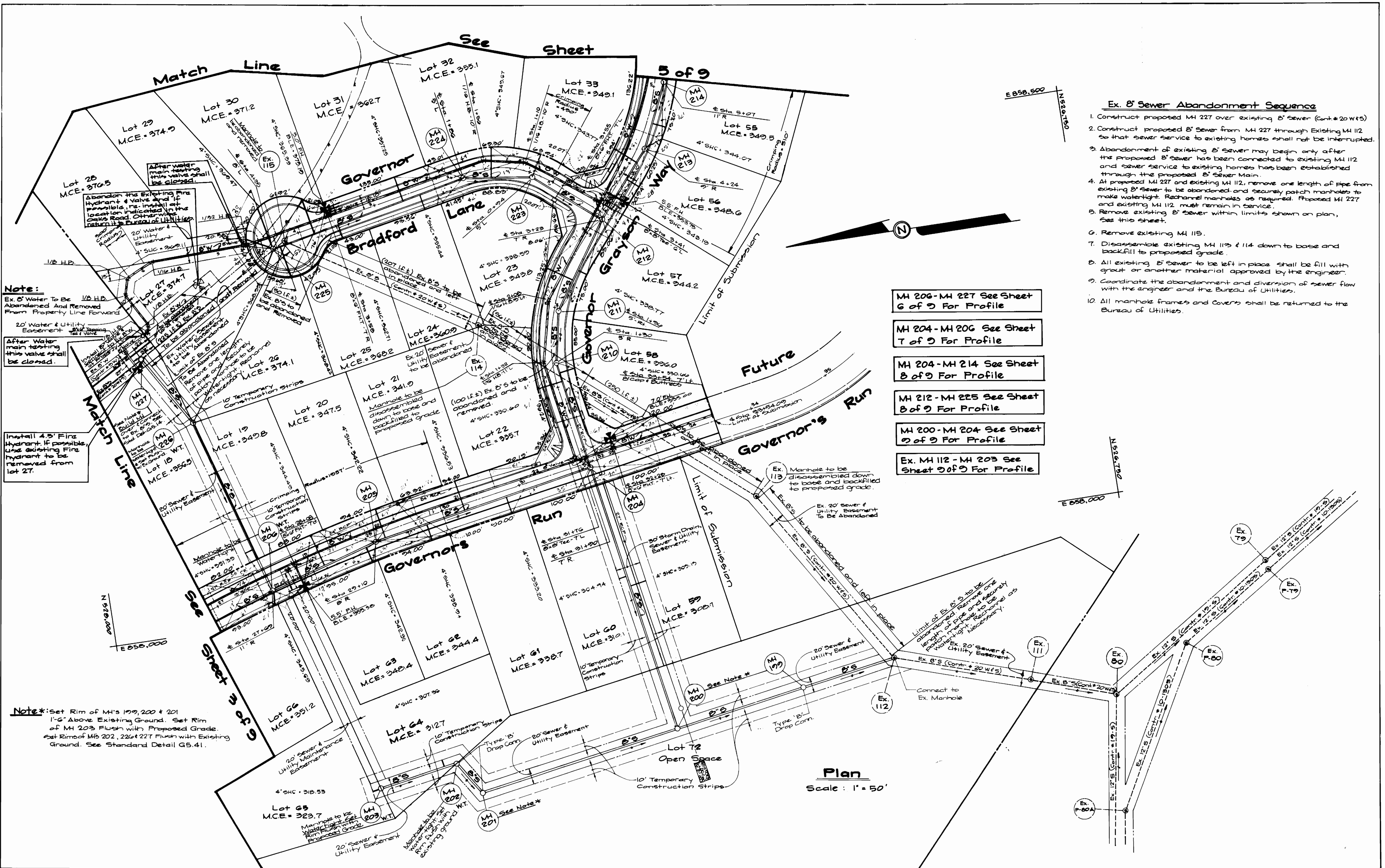
600' SCALE MAP NO. 18 BLOCK NO. 20

Governors Run
Section 1 Lots 1-73
2nd Election District
Howard County, Maryland
Contract No. 14-3037-D

SCALE AS SHOWN

SHEET 3 OF 9

AS-BUILT 2/4/95



- Ex. 8" Sewer Abandonment Sequence**
1. Construct proposed MH 227 over existing 8" sewer (Cont. #20 W(5))
 2. Construct proposed 8" sewer from MH 227 through existing MH 112 so that sewer service to existing homes shall not be interrupted.
 3. Abandonment of existing 8" sewer may begin only after the proposed 8" sewer has been connected to existing MH 112 and sewer service to existing homes has been established through the proposed 8" sewer main.
 4. At proposed MH 227 and existing MH 112, remove one length of pipe from existing 8" sewer to be abandoned and securely patch manholes to make watertight. Rechannel manholes as required. Proposed MH 227 and existing MH 112 must remain in service.
 5. Remove existing 8" sewer within limits shown on plan, see this sheet.
 6. Remove existing MH 115.
 7. Disassemble existing MH 113 & 114 down to base and backfill to proposed grade.
 8. All existing 8" sewer to be left in place shall be fill with grout or another material approved by the engineer.
 9. Coordinate the abandonment and diversion of sewer flow with the engineer and the Bureau of Utilities.
 10. All manhole frames and covers shall be returned to the Bureau of Utilities.

- MH 206-MH 227 See Sheet 6 of 9 For Profile
- MH 204-MH 206 See Sheet 7 of 9 For Profile
- MH 204-MH 214 See Sheet 8 of 9 For Profile
- MH 212-MH 225 See Sheet 8 of 9 For Profile
- MH 200-MH 204 See Sheet 9 of 9 For Profile
- Ex. MH 112-MH 203 See Sheet 9 of 9 For Profile

Note:
 Ex. 8" Water To Be 1/2 H.D. Abandoned And Removed From Property Line Forward

20' Water & Utility Easement

After Water main testing this valve shall be closed.

Install 4.5" Fire Hydrant. If possible, use existing fire hydrant to be removed from lot 27.

Note*: Set Rim of MH's 199, 200 & 201 1'-6" Above Existing Ground. Set Rim of MH 203 Flush with Proposed Grade. Set Rime of Mbs 202, 226 & 227 Flush with Existing Ground. See Standard Detail G5.41.

Plan
 Scale: 1" = 50'

<p>DEPARTMENT OF PUBLIC WORKS HOWARD COUNTY, MARYLAND</p> <p><i>Richard W. Sporn</i> 8/17/90 DIRECTOR OF PUBLIC WORKS DATE</p> <p><i>Michael J. ...</i> 8-17-90 CHIEF, BUREAU OF UTILITIES DATE</p>	<p>GW GUTSCHICK LITTLE & WEBER, P.A. ENGINEERS, PLANNERS, SURVEYORS</p> <p>3908 NATIONAL DRIVE SUITE 250 BURTOWNSVILLE OFFICE PARK BURTOWNSVILLE, MD. 20886 (301) 421-4024</p>	<p>DES: G.W. DRN: G.W. CHK: R.S.P. DATE: July 1990</p>	<p>600' SCALE MAP NO. 25 BLOCK NO. 2</p> <p>Water and Sewer Main Plan</p>	<p>Governors Run Section 1 Lots 1-73 2nd Election District Howard County, Maryland Contract No. 14-3037-D</p>	<p>SCALE AS SHOWN</p> <p>SHEET 4 OF 9</p>
--	--	---	--	--	---

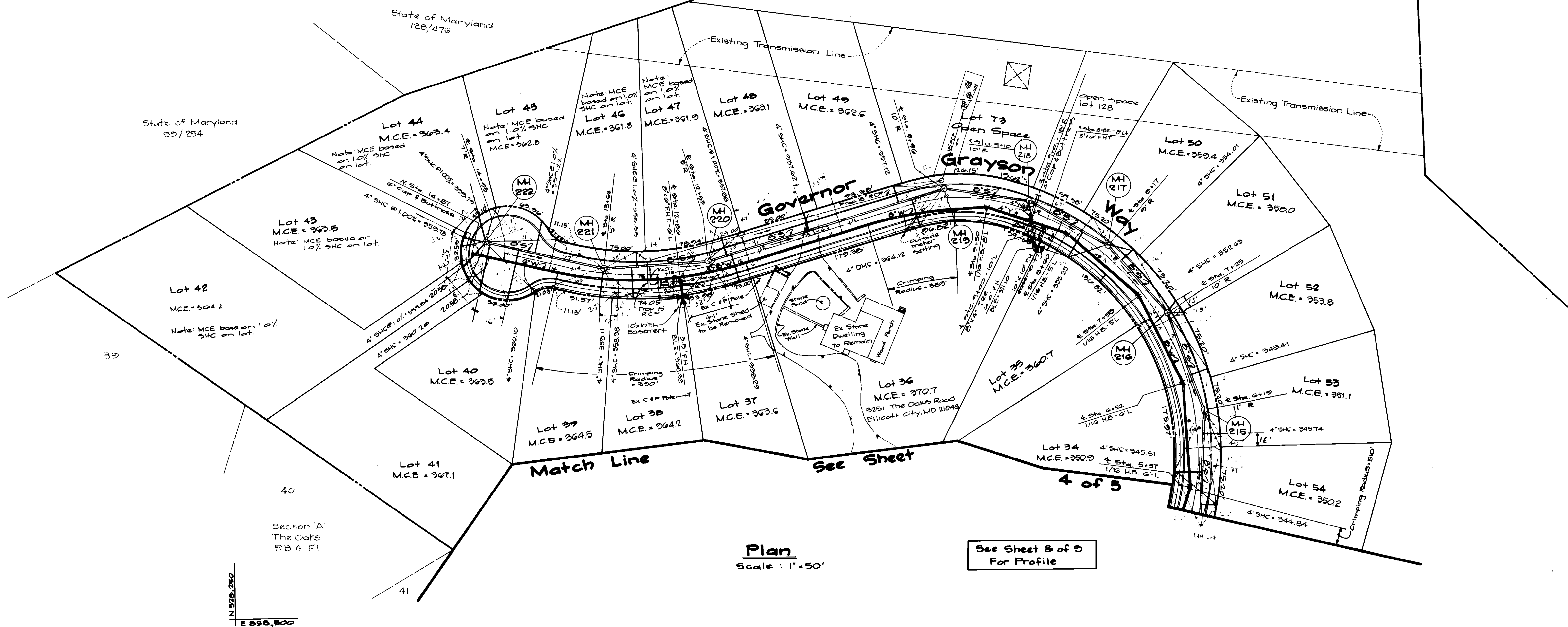
14-3037-D



E 059,250
N 520,250

E 059,250
N 527,250

N 520,250
E 058,500



Plan
Scale: 1" = 50'

See Sheet 3 of 5
For Profile

DEPARTMENT OF PUBLIC WORKS
HOWARD COUNTY, MARYLAND

Donald W. [Signature] 8/17/90
DIRECTOR OF PUBLIC WORKS DATE

Nicholas A. [Signature] 8/17/90
CHIEF, BUREAU OF UTILITIES DATE

[Signature] 8/17/90
CHIEF, BUREAU OF ENGINEERING DATE

[Signature] 9/17/90
CHIEF, LAND DEVELOPMENT DIV. DATE

GW GUTSCHICK LITTLE & WEBER, P.A.
ENGINEERS, PLANNERS, SURVEYORS

2009 NATIONAL DRIVE, SUITE 200, BURTCHVILLE OFFICE PARK
BURTCHVILLE, MD 20888
(301) 421-4024



DES:	G.W.			
DRN:	G.W.			
CHK:	R.S.P.	2	Add OXA tee & rev frontages	8/1/90
		1	revise F.F. & B.C.E., rev. SHC inverts & MCE elev	4/1/94
DATE:	July 1990	BY	NO.	REVISION

Water and Sewer Main Plan

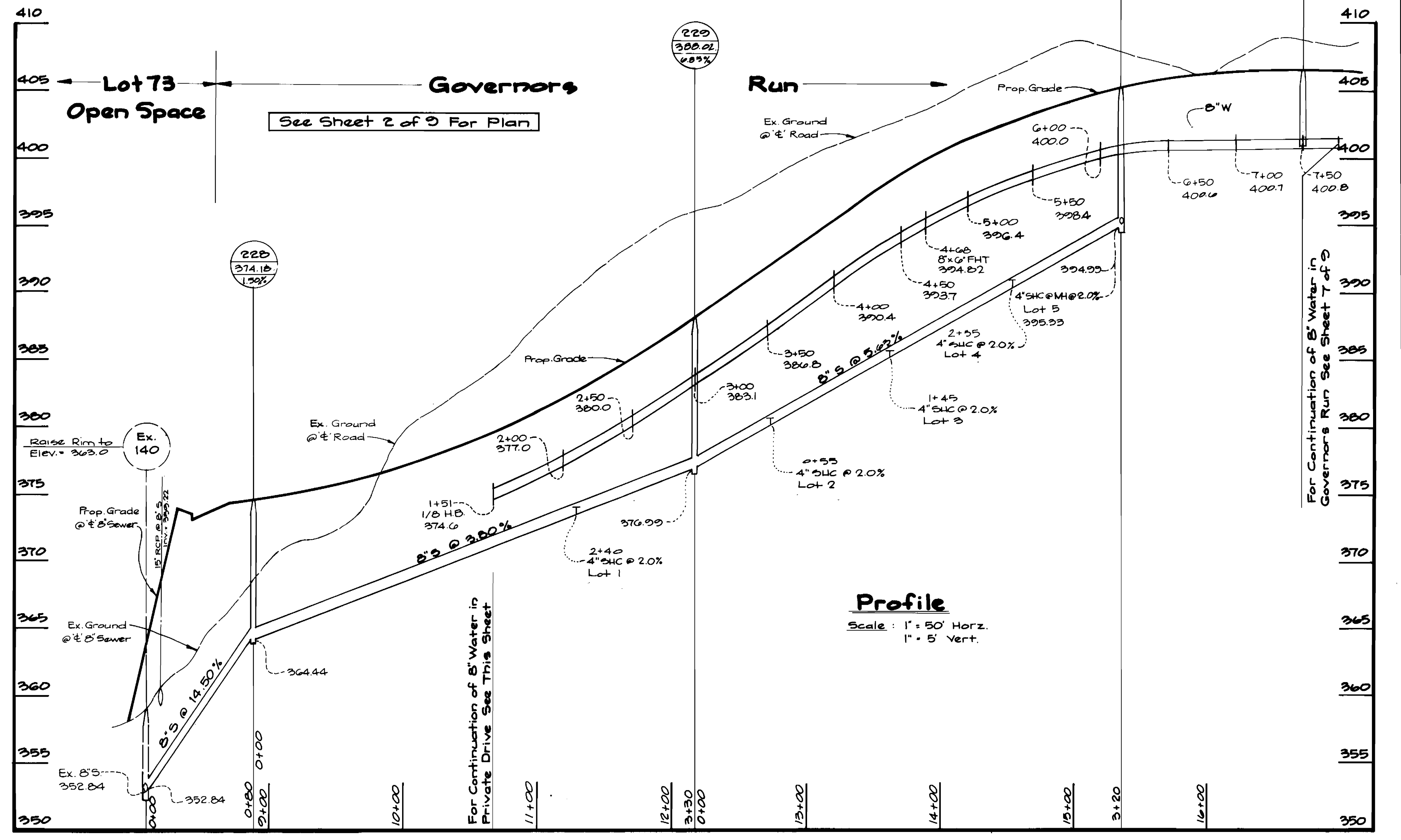
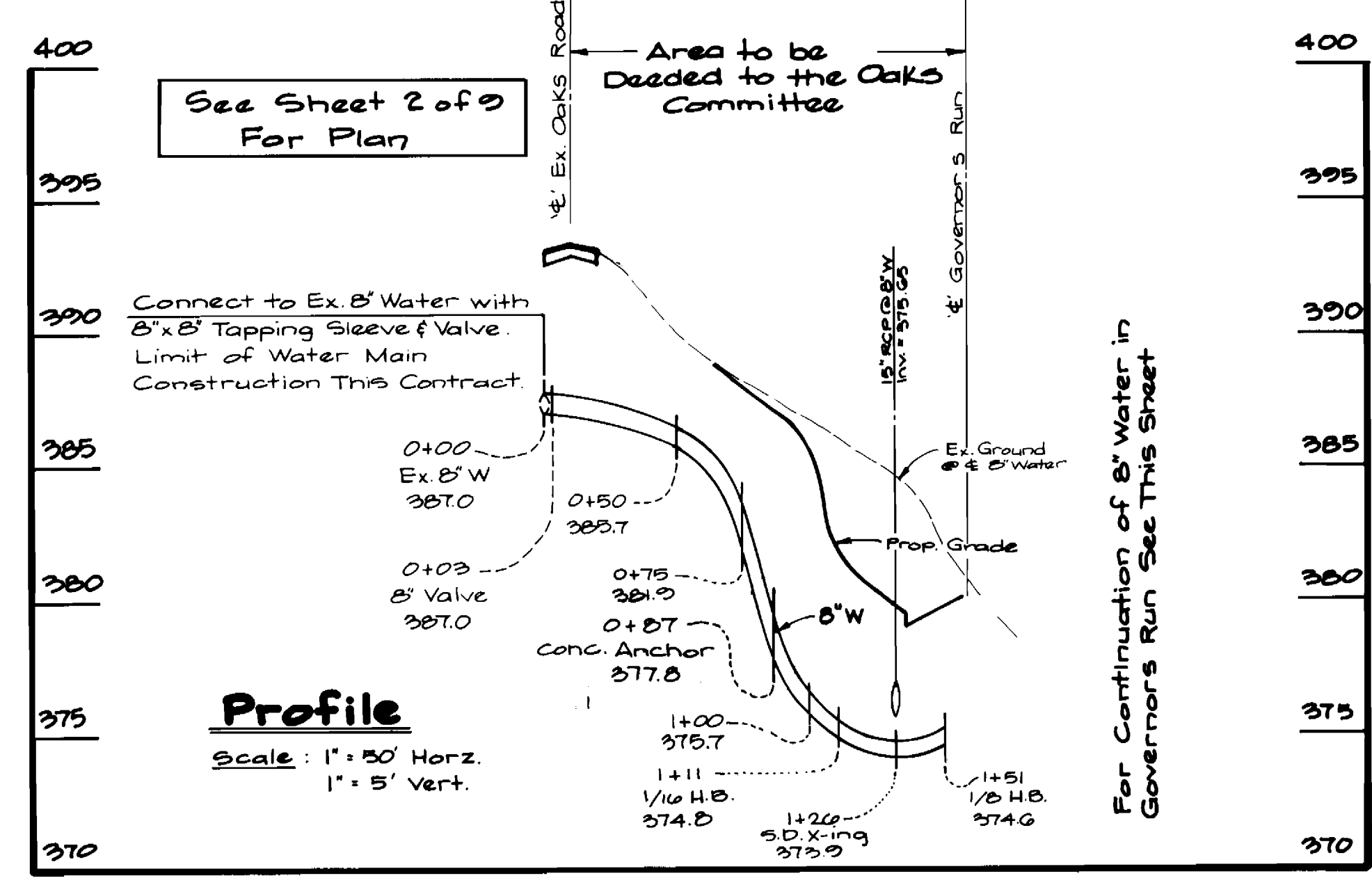
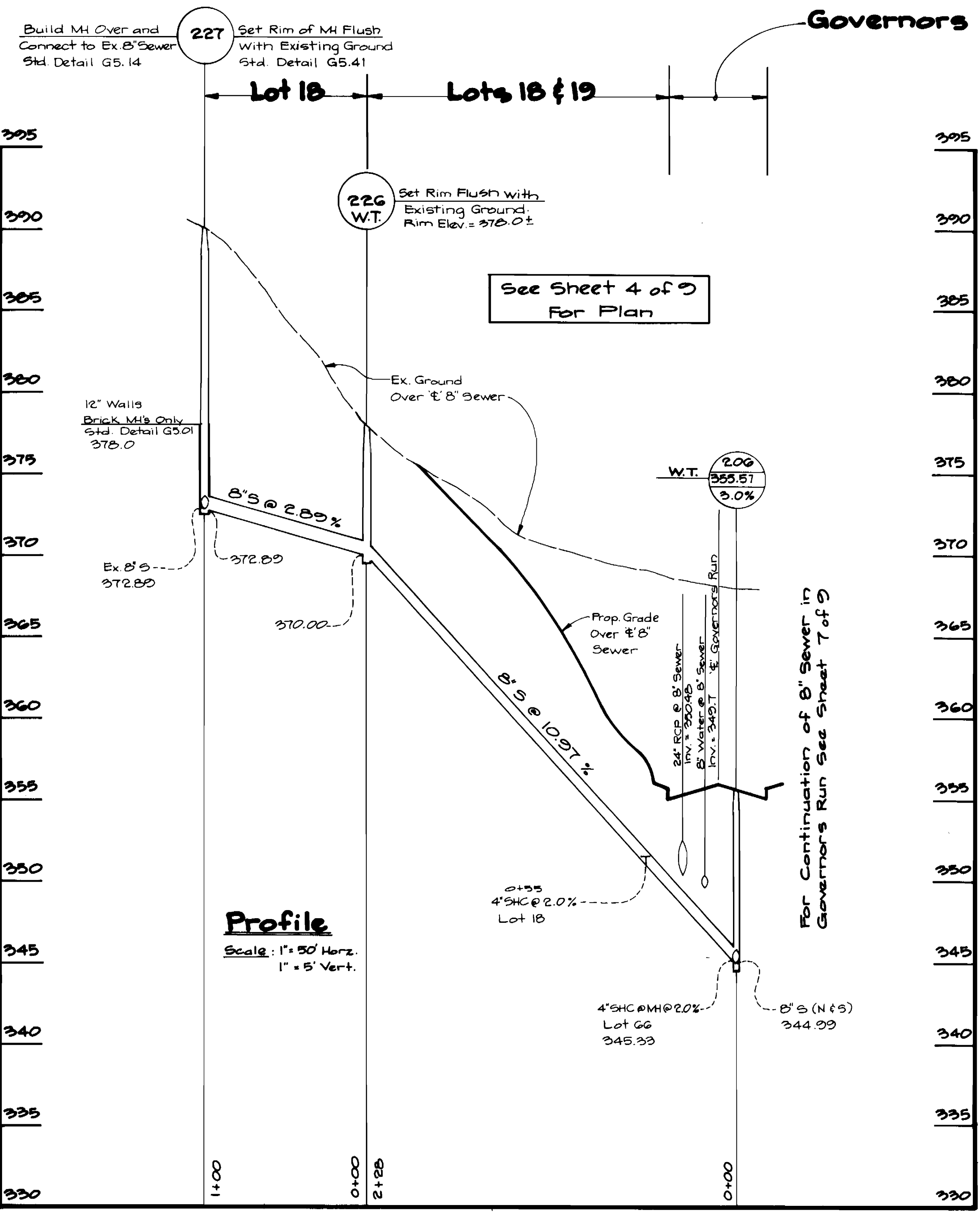
600' SCALE MAP NO. 25 BLOCK NO. 2

Governors Run
Section 1 Lots 1-73
2nd Election District
Howard County, Maryland
Contract No. 14-3037-D

SCALE AS SHOWN

SHEET 5 OF 2

AS-BUILT 8/14/15



DEPARTMENT OF PUBLIC WORKS
HOWARD COUNTY, MARYLAND

8/17/90
Director of Public Works

8-11-90
Chief, Bureau of Utilities

8/17/90
Chief, Bureau of Engineering

8/17/90
Chief, Land Development Div.

GW GUTSCHICK LITTLE & WEBER, P.A.
ENGINEERS, PLANNERS, SURVEYORS

3909 NATIONAL DRIVE SUITE 230 HURTONSVILLE OFFICE PARK
HURTONSVILLE, MD 20886
(301) 421-4024

DES: G.W.
DRN: G.W.
CHK: R.S.P.
DATE: July 1990

DES:	G.W.			
DRN:	G.W.			
CHK:	R.S.P.	2	Revised Profiles	4/1/91
DATE:	July 1990	G.A.W.	Add Concrete Anchor Along 8" W 36.0+27	1/2/91
BY:	N.O.	REVISION		

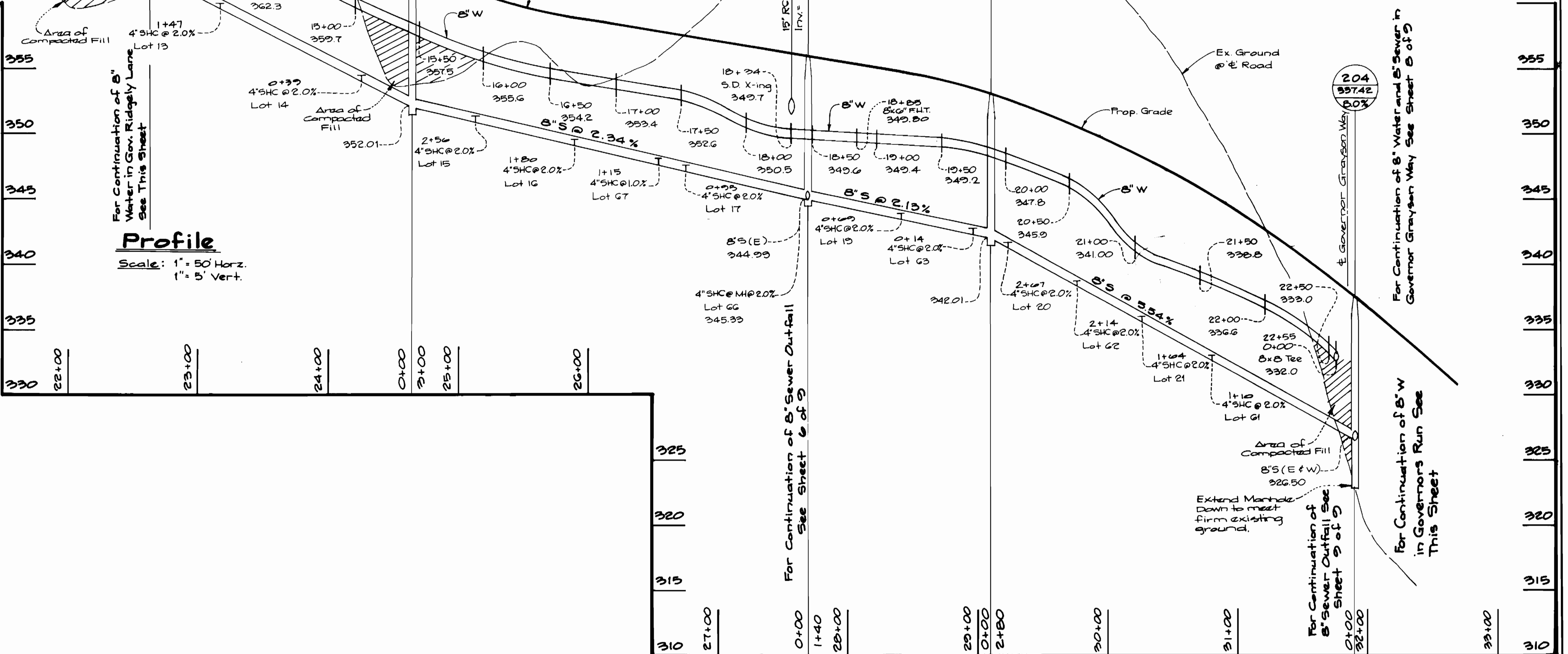
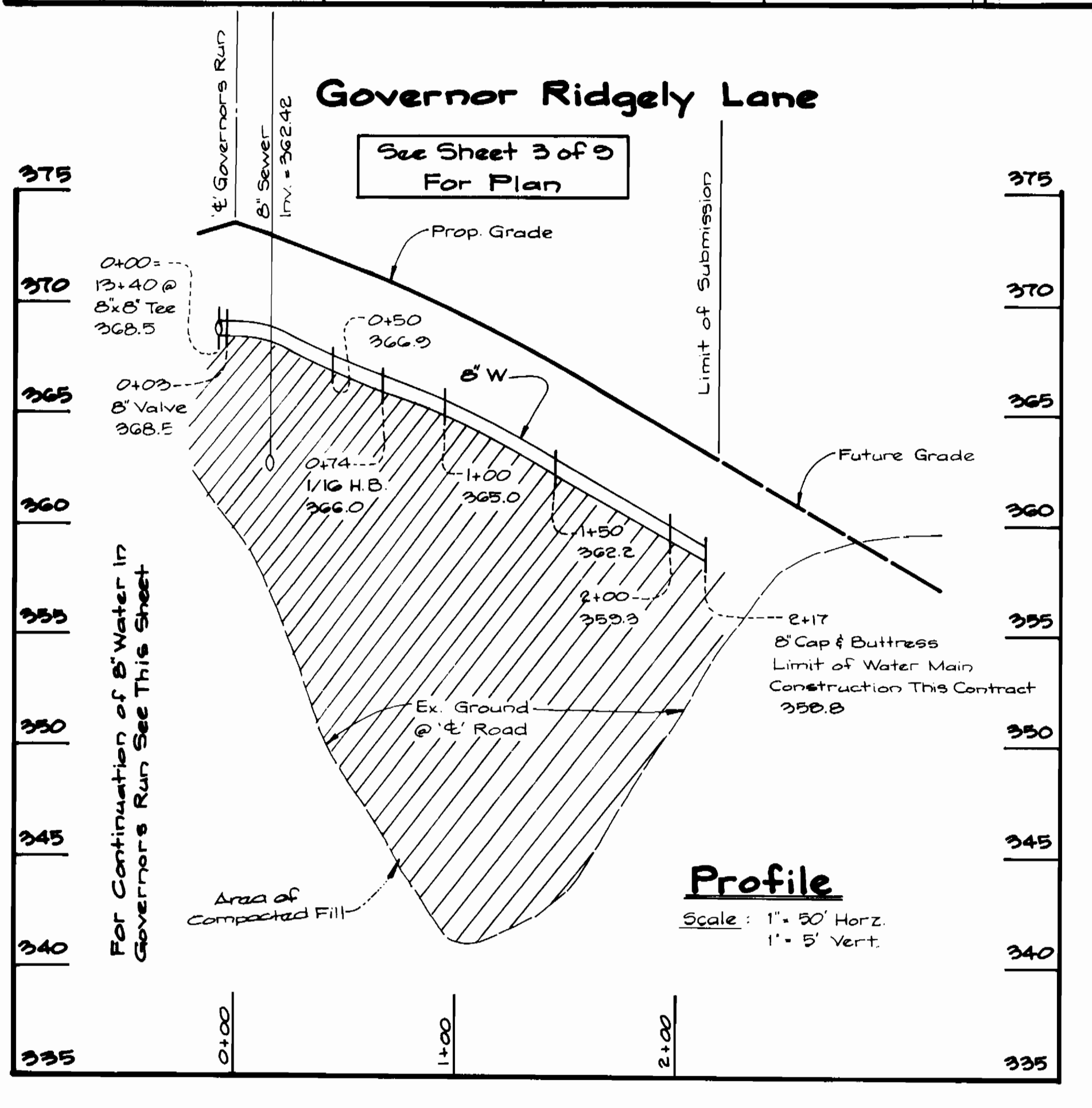
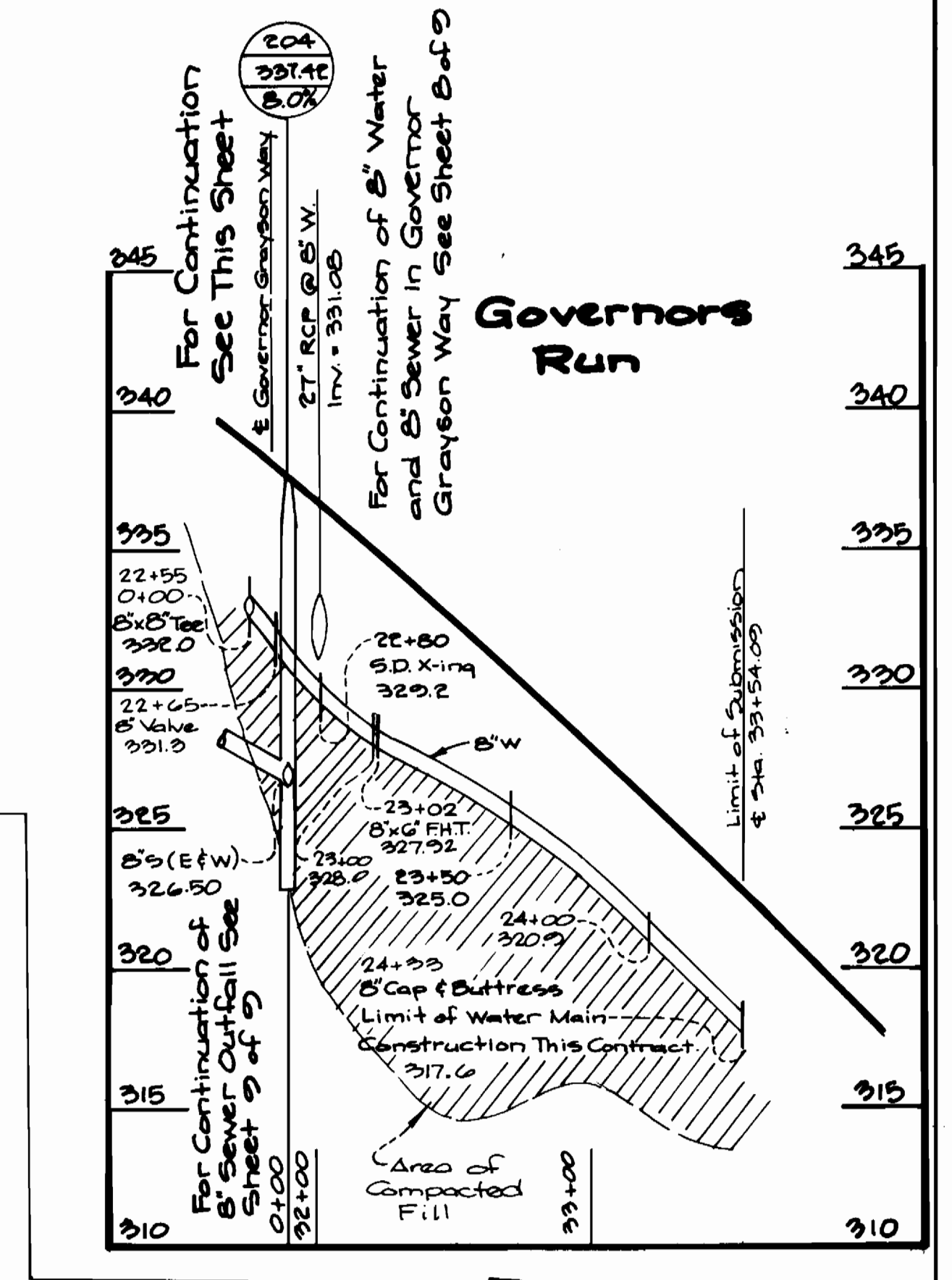
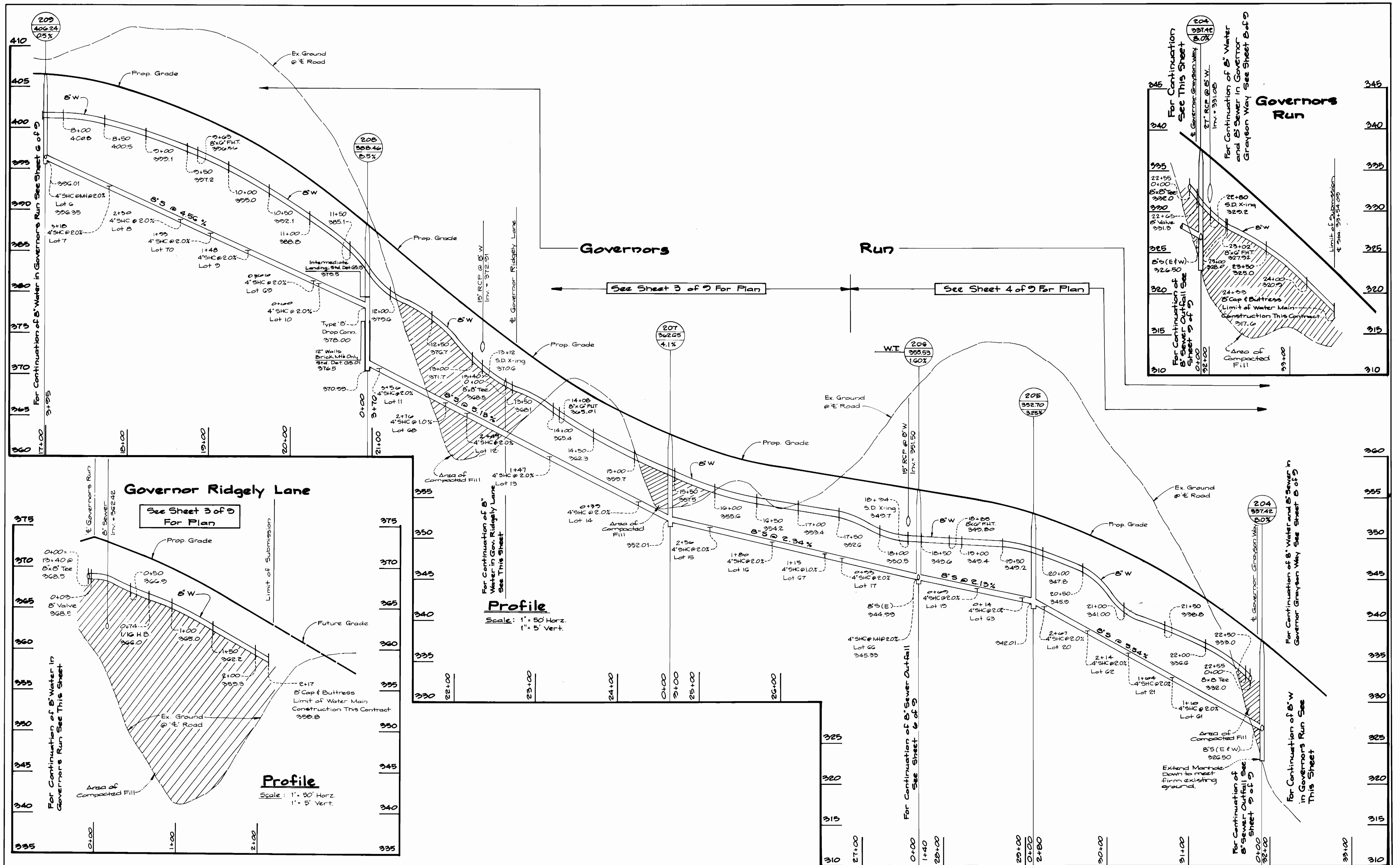
Water and Sewer Main Profiles

600' SCALE MAP NO. 1B/25 BLOCK NO. 1B120/2

Governors Run
Section 1 Lots 1-73
2nd Election District
Howard County, Maryland
Contract No. 14-3037-D

SCALE AS SHOWN
SHEET 6 OF 9

AS-BUILT 8/4/95



DEPARTMENT OF PUBLIC WORKS
 HOWARD COUNTY, MARYLAND

Michael J. ... 8/17/90
 DIRECTOR OF PUBLIC WORKS DATE

... 8/17/90
 CHIEF, BUREAU OF UTILITIES DATE

... 8/17/90
 CHIEF, BUREAU OF ENGINEERING DATE

... 8/17/90
 CHIEF, LAND DEVELOPMENT DIV. DATE

GW GUTSCHICK LITTLE & WEBER, P.A.
 ENGINEERS, PLANNERS, SURVEYORS

3909 NATIONAL DRIVE SUITE 250 BURTONTVILLE OFFICE PARK
 BURTONTVILLE, MD. 20886
 (301) 421-4024

DES: G.W.			
DRN: G.W.			
CHK: R.S.P.	2	revise profiles	4/1/94
DATE: July 1990	BY: GAW	NO. 2	REVISION
			DATE: 1/2/91

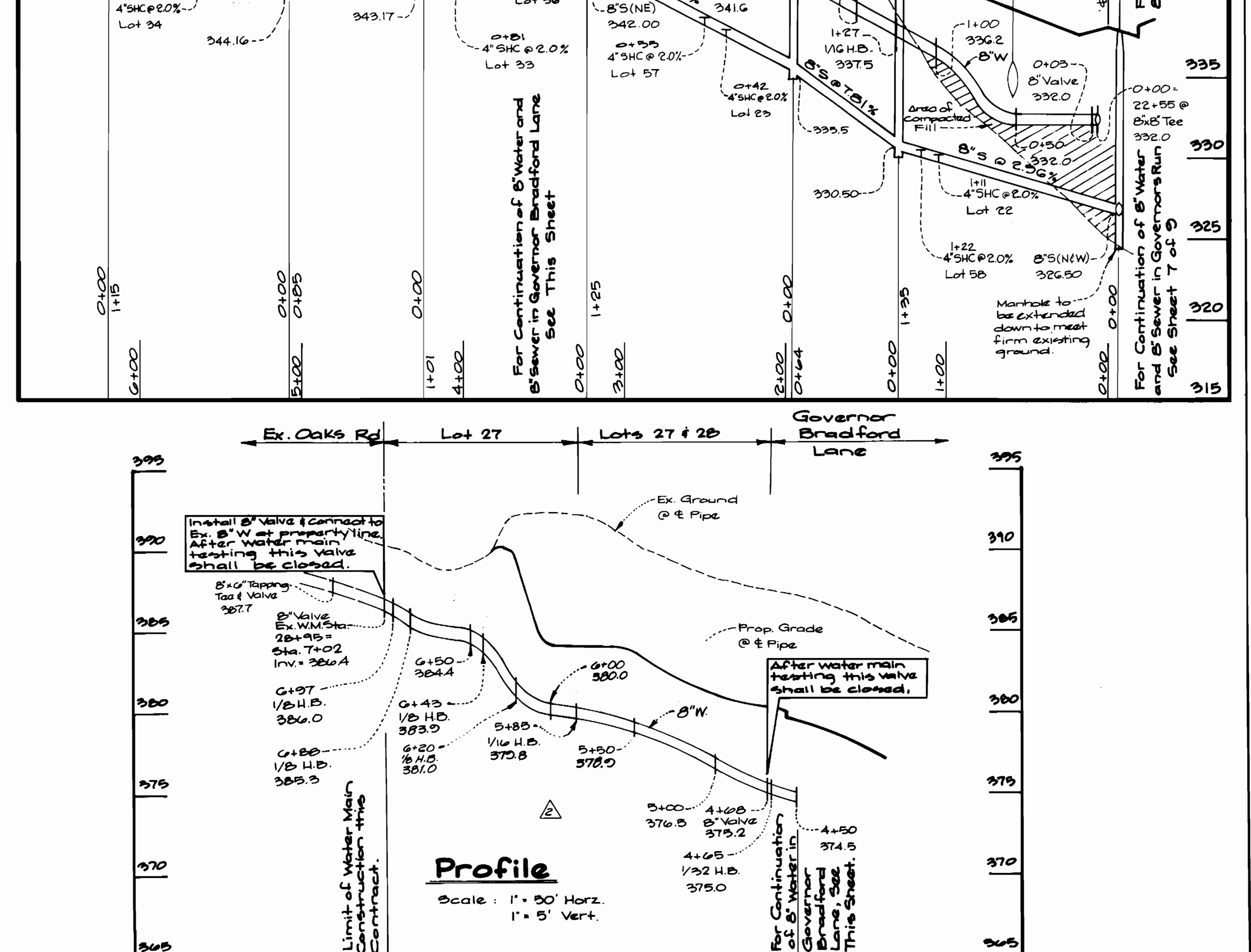
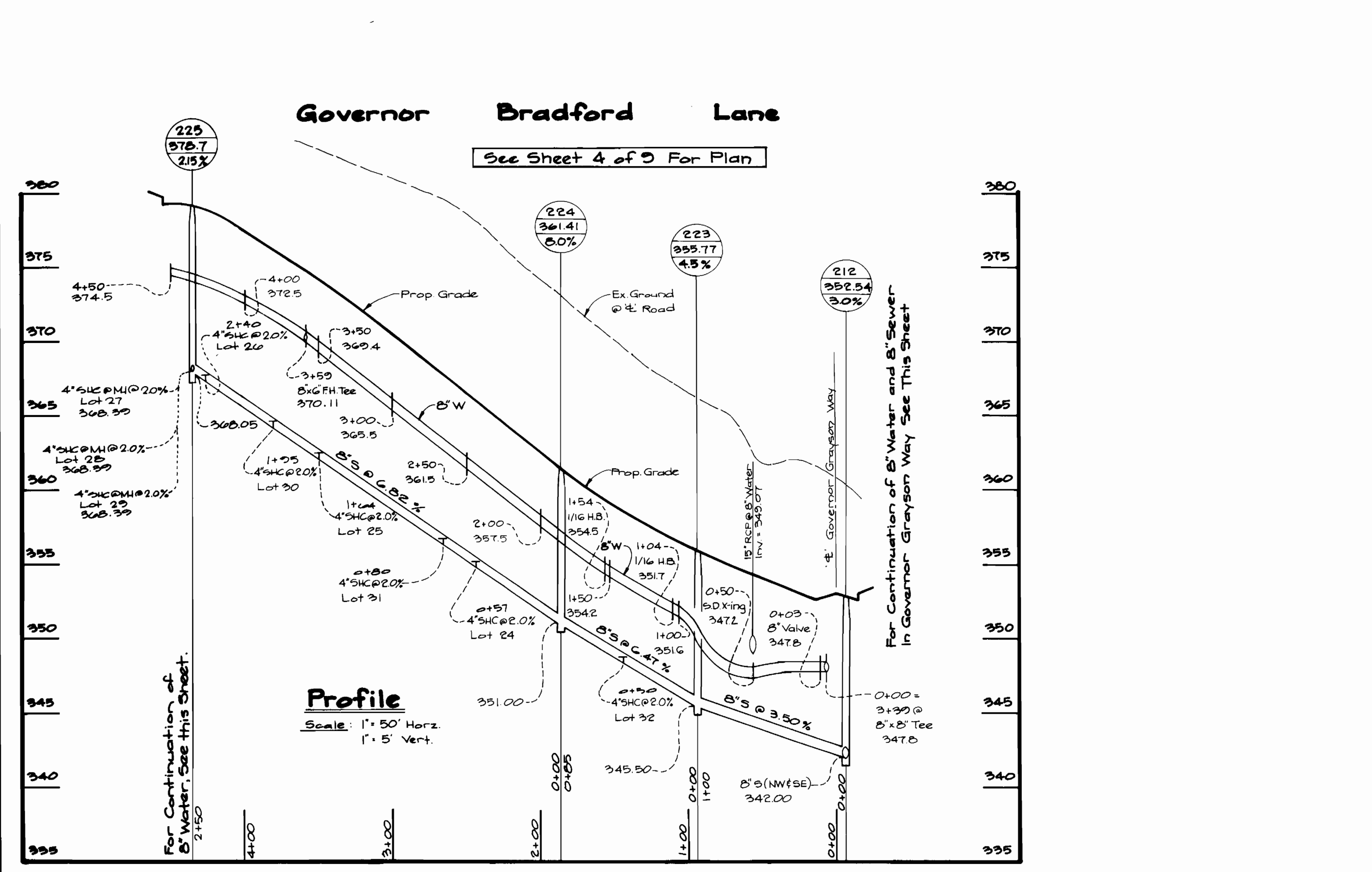
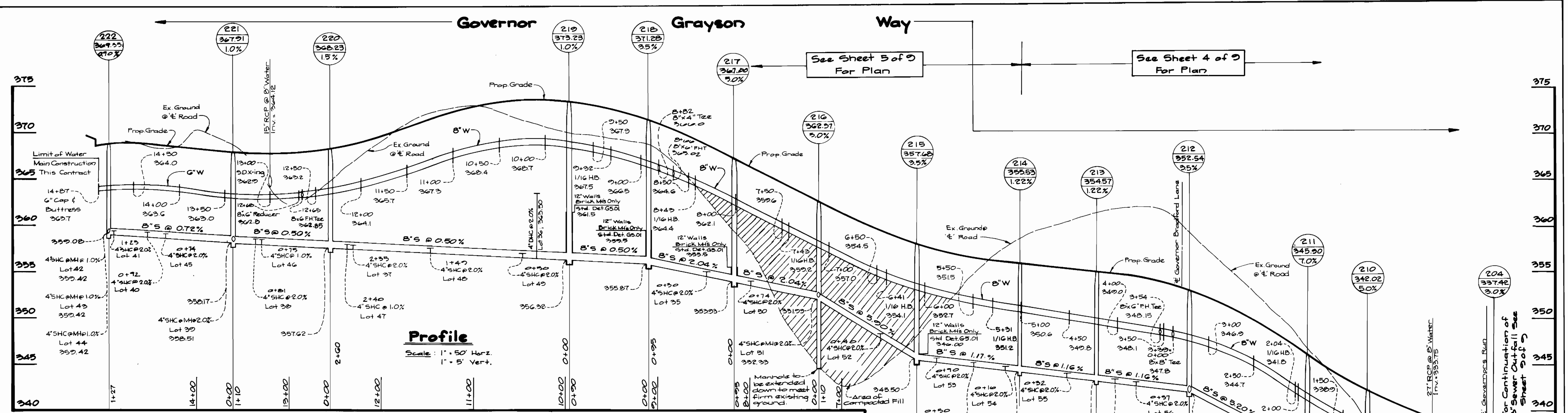
Water and Sewer Main Profiles

600' SCALE MAP NO. 12/25 BLOCK NO. 12/20/2

Governors Run
 Section 1 Lots 1-73
 2nd Election District
 Howard County, Maryland
 Contract No. 14-3037-D

SCALE AS SHOWN
 SHEET 7 OF 9

A-2-0-0-107 8/1/95



DEPARTMENT OF PUBLIC WORKS
 HOWARD COUNTY, MARYLAND
 Director of Public Works: *[Signature]* 8/17/90
 Chief, Bureau of Engineering: *[Signature]* 8/17/90
 Chief, Bureau of Utilities: *[Signature]* 8-17-90
 Chief, Land Development Div.: *[Signature]* 8/17/90

GW GUTSCHICK LITTLE & WEBER, P.A.
 ENGINEERS, PLANNERS, SURVEYORS
 3908 NATIONAL DRIVE, SUITE 250, BURTONSVILLE OFFICE PARK
 BURTONSVILLE, MD 20866
 (301) 421-4024

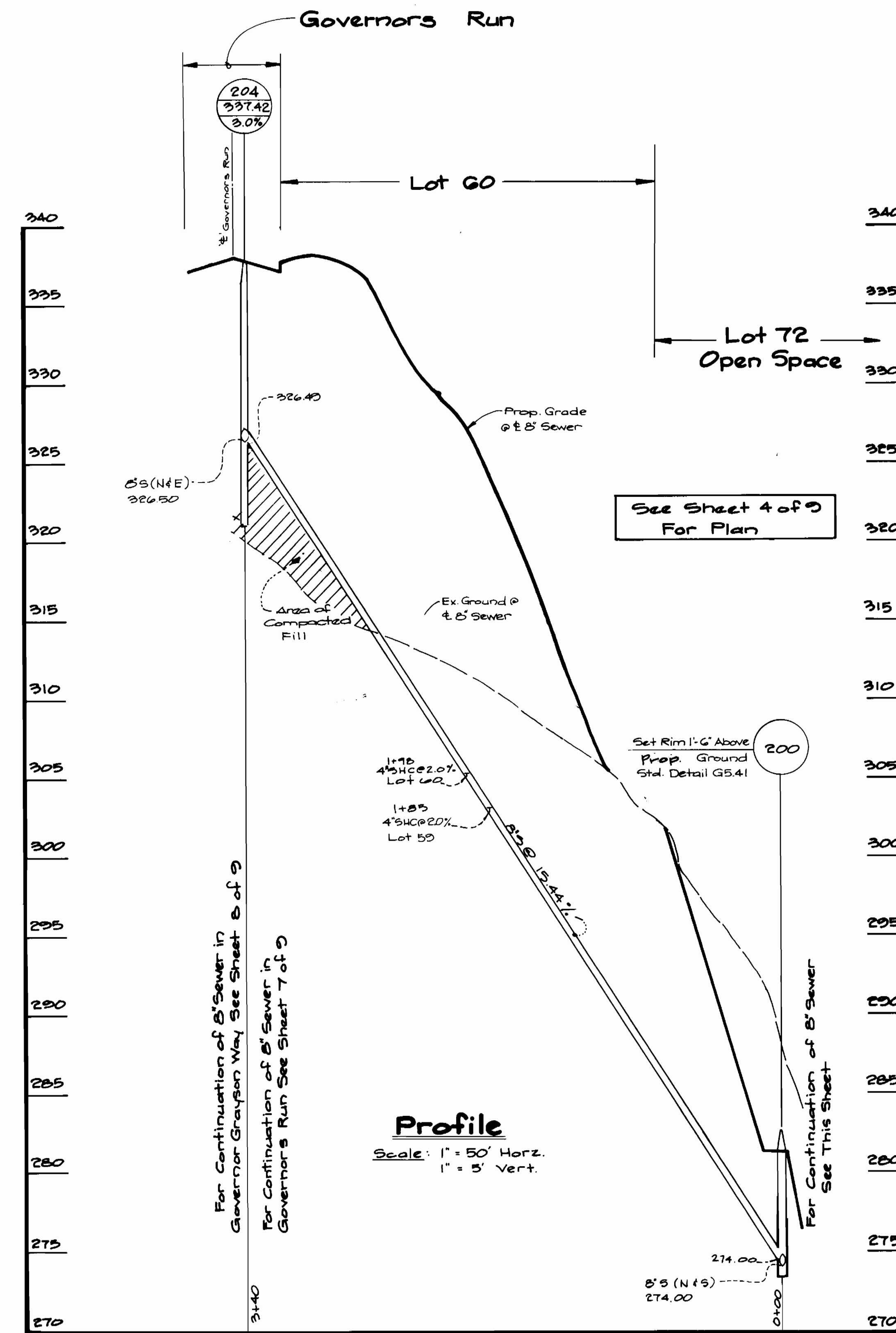
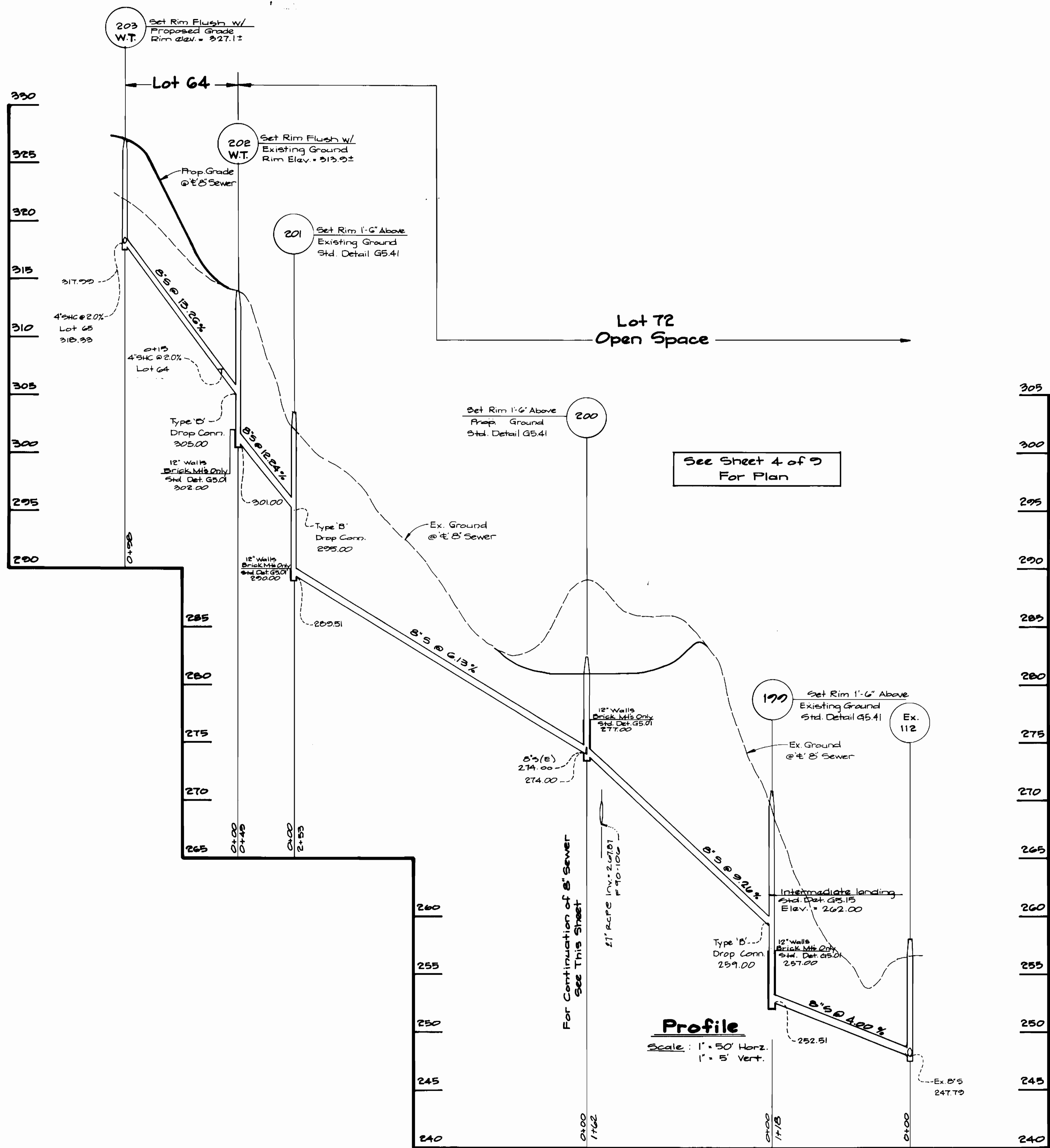
[Signature]
 CK

DES: G.W.			
DRN: G.W.			
CHK: R.S.P.	REVISE % THROUGH LOTS 27 & 28	1/25/90	
	1 revise profiles	4/1/94	
DATE: July 1990	BY: NO.	REVISION	DATE

Water and Sewer Main Profiles
 600' SCALE MAP NO. JB/25 BLOCK NO. 19220/2

Governors Run
 Section 1 Lots 1-73
 2nd Election District
 Howard County, Maryland
 Contract No. 14-3037-D
 SCALE AS SHOWN
 SHEET 2 OF 2

A-1-111 8/14/95



DEPARTMENT OF PUBLIC WORKS
HOWARD COUNTY, MARYLAND

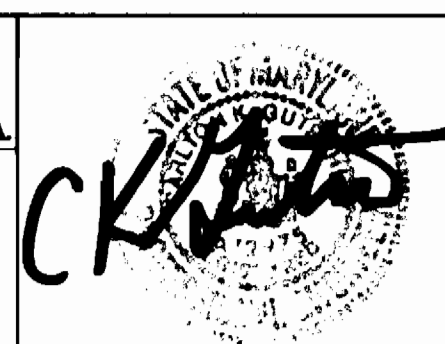
Michael A. ... 8/17/90
DIRECTOR OF PUBLIC WORKS DATE

... 8-17-90
CHIEF, BUREAU OF UTILITIES DATE

... 8/17/90
CHIEF, LAND DEVELOPMENT DIV. DATE

GLW GUTSCHICK LITTLE & WEBER, P.A.
ENGINEERS, PLANNERS, SURVEYORS

3908 NATIONAL DRIVE SUITE 250 BURTONSVILLE OFFICE PARK
BURTONSVILLE, MD 20886
(301) 421-4024



DES: G.W.				
DRN: G.W.				
CHK: R.S.P.	2	revise profiles	6/13/90	
DATE: July 1990	1	revise profiles	4/1/94	
BY NO.		REVISION		

Sewer Main Profiles

600' SCALE MAP NO. 12/25 BLOCK NO. 12120/2

Governors Run
Section 1 Lots 1-73
2nd Election District
Howard County, Maryland.
Contract No. 14-3037-D.

SCALE AS SHOWN
SHEET 2 OF 2

A2-BUILT 8/19/95