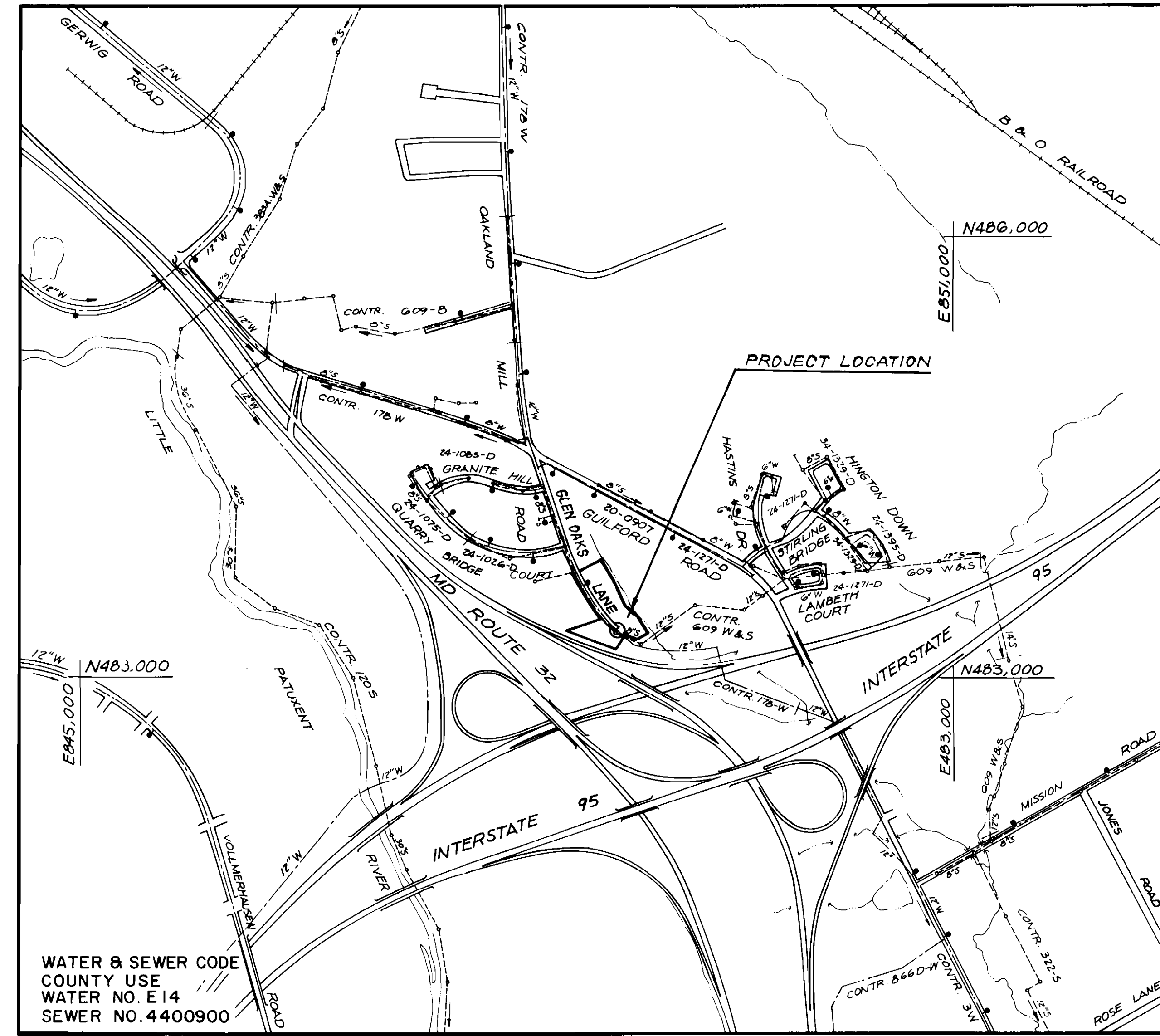


TYPE OF BUILDING	<u>Single Family</u>
NO. OF LOTS	<u>14</u>
NO. OF WHC's	<u>14</u>
NO. OF SHC's	<u>14</u>
DRAINAGE AREA	<u>Little Patuxent</u>



VICINITY MAP
SCALE: 1" = 600'

CONTRACT NO. 24-3036-D
MAPLESIDE
VILLAGE OF KINGS CONTRIVANCE
SECTION 5 AREA 4
LOTS 1 THRU 14
HOWARD COUNTY, MARYLAND
DEPARTMENT OF PUBLIC WORKS

GENERAL NOTES

- Approximate location of existing mains are shown. The contractor shall take all necessary precautions to protect existing mains and services and maintain uninterrupted supply. Any damage incurred shall be repaired immediately to the satisfaction of the Inspector, at the contractor's expense.
- All horizontal controls are based on Maryland State Coordinates.
- All vertical controls are based on U.S.G.S. Datum.
- All pipe elevations shown are invert elevations.
- Clear all utilities by a minimum of 6" clear all poles by 2'-0" minimum or tunnel as required. Any cost incurred to the contractor for tunneling or bracing at poles shall be included in unit prices bid for excavation and backfill.
- For details not shown on the drawings use Howard County Standard Details.
- For materials and construction methods use Howard County Standard Specifications and Howard County Design Manual, Volume IV, 1989 Amendments. The Contractor shall have Volume IV, 1989 Amend. on the job site.
- Contractor shall locate existing utilities a minimum of two (2) weeks in advance of construction operations in the vicinity of proposed utilities at his own expense.
- Contractor shall notify the following utilities or agencies at least five (5) working days before starting work shown on these plans.
 - State Highway Administration - 531-5533
 - Baltimore Gas & Electric Company - Underground Damage Control - 859-9004
 - Baltimore Gas & Electric Company - Contractor Services - 850-4620
 - Baltimore Gas & Electric Company - Trouble Shooting - 298-9001
 - "Miss Utility" - 1-800-257-7777
 - Chesapeake & Potomac (C & P) Telephone Company - 1-800-257-7777
 - Bureau of Utilities Howard County - 992-2366
 - Colonial Pipeline Company - 795-1390
- Trees are to be protected from damage to maximum extent. Trees located within the construction strip are not to be removed or damaged by the contractor.
- Contractor shall remove trees, stumps, and roots along line of excavation as directed by the Inspector. Payment for such removal shall be included in the unit price bid for excavation and backfill.
- Place regulation "Men Working" and warning signs as required to comply with Maryland State Highway Administration Manual of Traffic Control for Highway Construction and Maintenance Operations.
- All water mains to be D.I.P. Class 52 unless otherwise noted.
- Top of all water mains to have a minimum of 3'-1/2' cover unless otherwise noted.
- Valves adjacent to tees shall be strapped to tees.
- Block all fittings with concrete.
- Bury line elevations on fire hydrants shall be set to the elevations shown on the drawings. All fire hydrants shall be strapped and buttressed with concrete in accordance with standard details. Soil around the fire hydrant to be compacted in accordance with Sections 1000 & 1005 of the Standard Specifications.
- All water house connections shall be for an inside meter setting.
- The contractor shall not operate any water main valves on the existing system.
- All sewer mains shall be C.S.P.X., V.C.P.X., or P.V.C., unless otherwise noted.
- The contractor shall provide a joint in all sewer mains within 2'-0" of exterior manhole wall.
- All manholes shall be 4'-0" inside diameter, unless otherwise noted.
- Water main and water house connection lines must have a minimum of one foot separation from the sanitary sewer and sewer house connections as they cross. Except at crossings, water and sewer lines shall have a minimum horizontal separation of 10'.
- Manholes designated thus: WT, shall have a Watertight Frame and Cover.

QUANTITIES			
ITEM	EST'D	AS BUILT	MATERIAL / SUPPLIER
4" S.H.C.	515 L.F.	564 L.F.	NEW WATER & SEWER SUPPLIES INC., MULTIPLE CONTRACTOR SALES INC., GENCO HARCO, J.M. MANUFACTURING
1" WHC.	120 L.F.	116.17 L.F.	A&P WATER & SEWER SUPPLIES INC., MUELLER CAMBRIDGE
3/4" WHC.	105 L.F.	92 L.F.	
Fire Hydrant	1 EA	1 EA	
12" V	1 EA	DELETED	

Sediment Control Measures will be implemented in accordance with Section 219 of the Specifications & with Road Construction Plan E-91-08; Drawing, Sediment & Erosion Control.

REVIEWED FOR HOWARD SOIL CONSERVATION DISTRICT AND MEETS TECHNICAL REQUIREMENT.
 Signature: *James A. Hahn* DATE: 11/1/90
 U.S. SOIL CONSERVATION SERVICE

This Development Plan is approved for Soil Erosion and Sediment Control by the Howard Soil Conservation District.

APPROVED:
 Signature: *Jeffrey H. Hahn* DATE: 11/1/90
 HOWARD S.C.D.

DEPARTMENT OF PUBLIC WORKS
 HOWARD COUNTY, MARYLAND

Signature: *James A. Hahn* DATE: 11/1/90
 DIRECTOR OF PUBLIC WORKS

Signature: *John J. Hahn* DATE: 11/1/90
 CHIEF, BUREAU OF ENGINEERING

Signature: *John J. Hahn* DATE: 11/1/90
 CHIEF, BUREAU OF UTILITIES

Signature: *John J. Hahn* DATE: 11/1/90
 CHIEF, LAND DEVELOPMENT DIV.

CFE CLARK, FINEPROCK & SACKETT, INC.
 ENGINEERS - PLANNERS - SURVEYORS

7135 MINSTREL WAY COLUMBIA MARYLAND 21045
 (301) 381-7500 BALTO. (301) 621-8100 WASH.



DES:			
DRN:			
CHK:			
DATE:	JTR	1 Deleted 12-inch Water Main Valve	8-23-91
BY:	NO.	REVISION	DATE

TITLE SHEET

600' SCALE MAP NO. 42 BLOCK NO.

MAPLESIDE
 COLUMBIA, VILLAGE OF KINGS CONTRIVANCE
 SECTION 5, AREA 4 - LOTS 1 THRU 14
 6TH ELECTION DISTRICT
 CONTRACT NO. 24-3036-D

SCALE AS SHOWN
 SHEET 1 OF 2

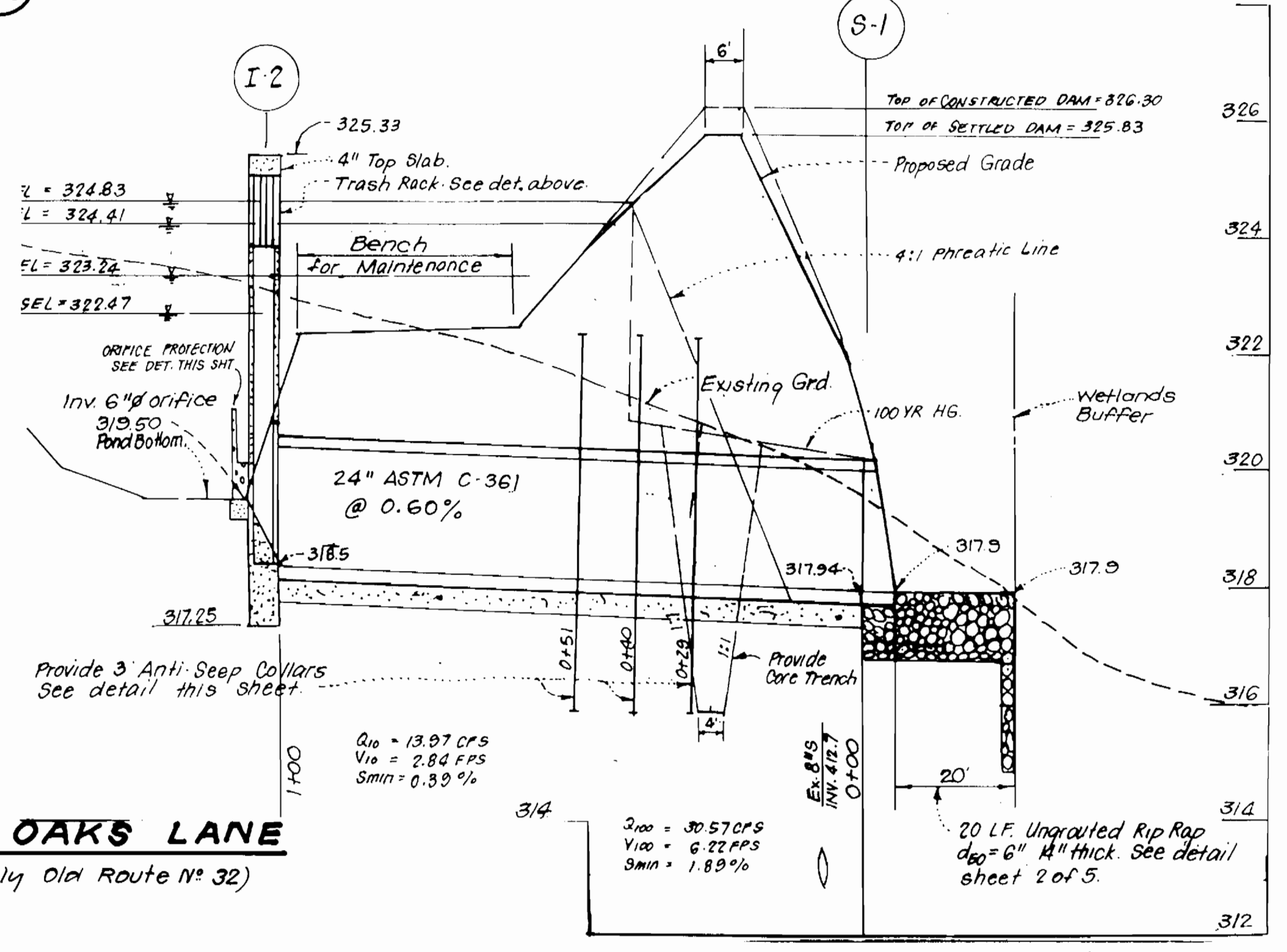
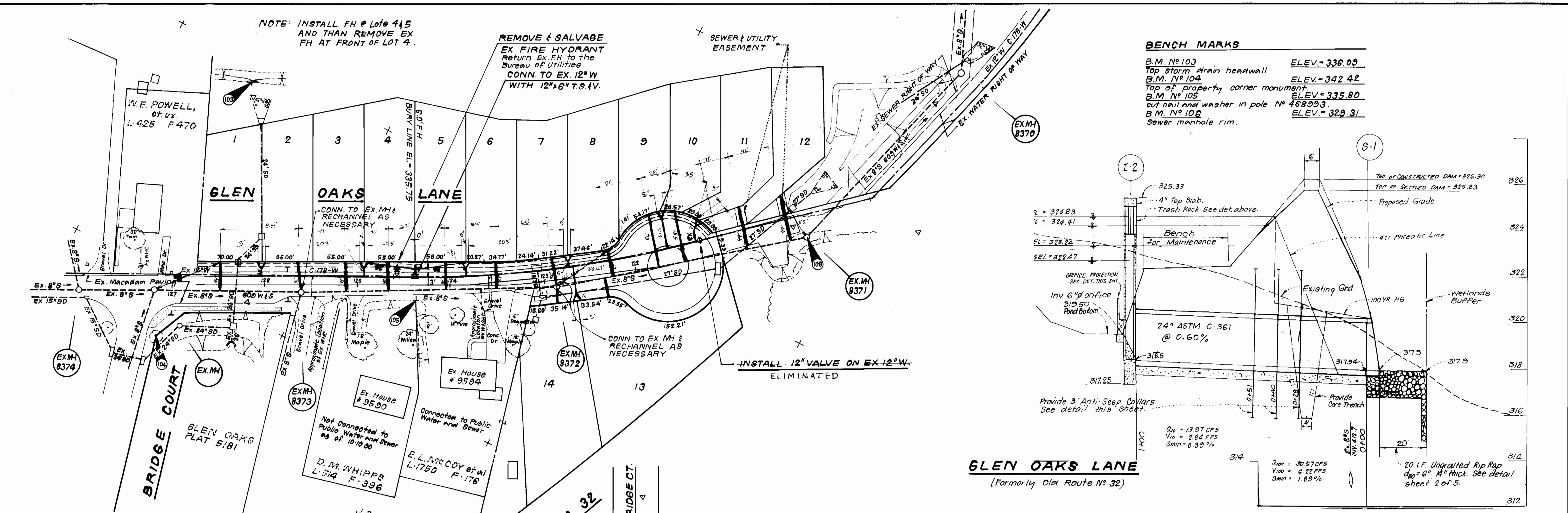
NOTE: INSTALL FH @ Lot 4 & 5 AND THEN REMOVE EX FH AT FRONT OF LOT 4.

REMOVE & SALVAGE EX FIRE HYDRANT Return Ex. FH to the Bureau of Utilities. CONN. TO EX. 12" W WITH 12"x6" T.S. IV.

SEWER & UTILITY EASEMENT

BENCH MARKS

B.M. No 103	ELEV. = 336.09
Top storm drain headwall	
B.M. No 104	ELEV. = 342.42
Top of property corner monument	
B.M. No 105	ELEV. = 335.80
cut nail and washer in pole No 468933	
B.M. No 106	ELEV. = 329.31
Sewer manhole rim.	



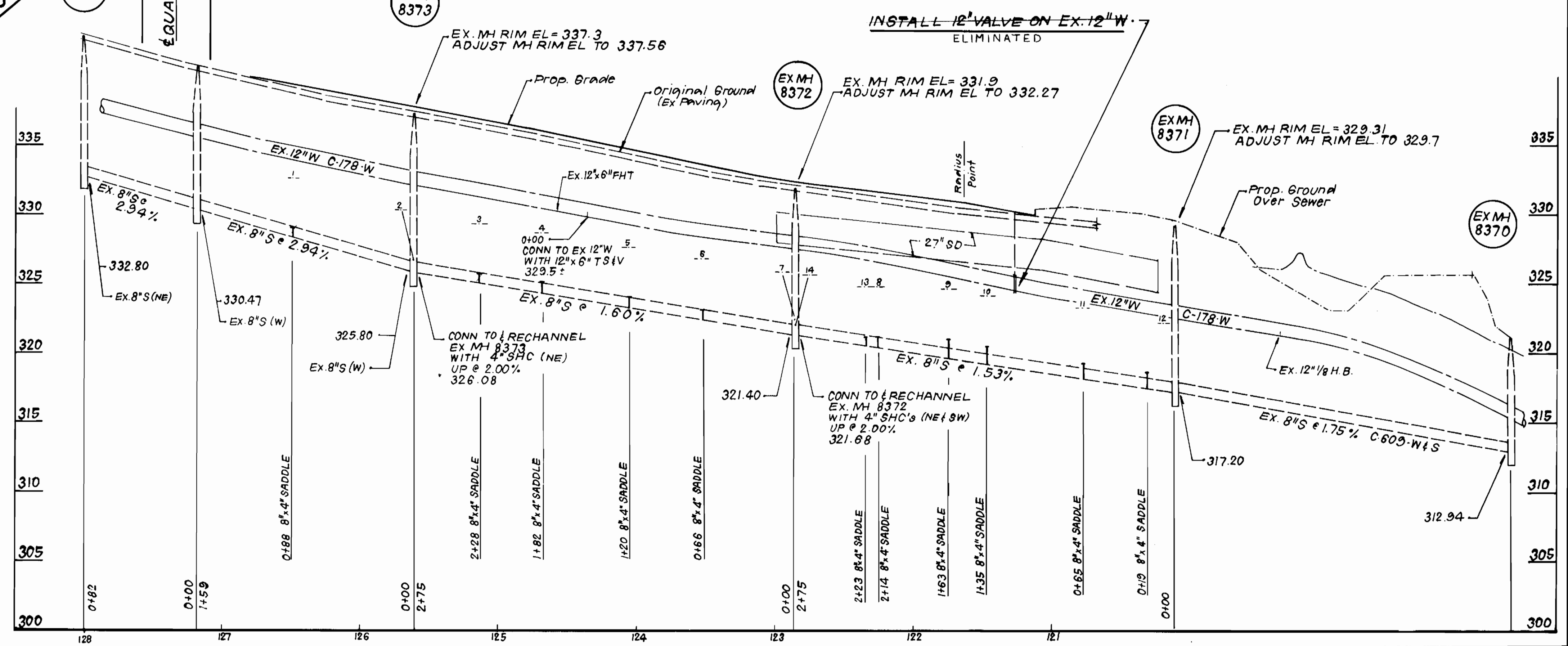
PROFILE THRU SPILLWAY
 SCALES: HORIZ. 1"=20'
 VERT. 1"=2'

PLAN SCALE
 1" = 50'

SEWER HOUSE CONNECTION TABLE

LOT No	Inv. @ E	Min. C.	LOT No	Inv. @ E	Min. C.
1	329.1	332.7	8	321.2	324.8
2	326.7	330.3	9	321.0	324.6
3	325.8	328.4	10	320.5	324.1
4	325.1	328.7	11	319.3	323.3
5	324.1	327.7	12	318.8	322.2
6	323.2	326.8	13	321.2	324.8
7	322.3	325.9	14	322.0	325.6

PROFILE SCALE
 HORIZONTAL: 1" = 50'
 VERTICAL: 1" = 5'



DEPARTMENT OF PUBLIC WORKS
 HOWARD COUNTY, MARYLAND

CFE CLARK · FINEPROCK & SACKETT, INC.
 ENGINEERS · PLANNERS · SURVEYORS
 7155 MINSTREL WAY COLUMBIA MARYLAND 21045
 (301) 381-7500 BALTO. (301) 621-8100 WASH.



DES: JTR			
DRN: JTR			
CHK: CCM			
DATE: JUL 90	JTR	1 Deleted 12" Water Main Valve	8-23-91
BY NO.		REVISION	DATE

PLAN & PROFILE OF WATER AND SEWER HOUSE CONNECTIONS

MAPLESIDE
 COLUMBIA, VILLAGE OF KINGS CONTRIVANCE
 SECTION 5, AREA 4 - LOTS 1 THRU 14
 6TH ELECTION DISTRICT
 CONTRACT NO. 24-3036-D

SCALE AS SHOWN
 SHEET 2 OF 2

AS BUILT 3-20-91

89-24