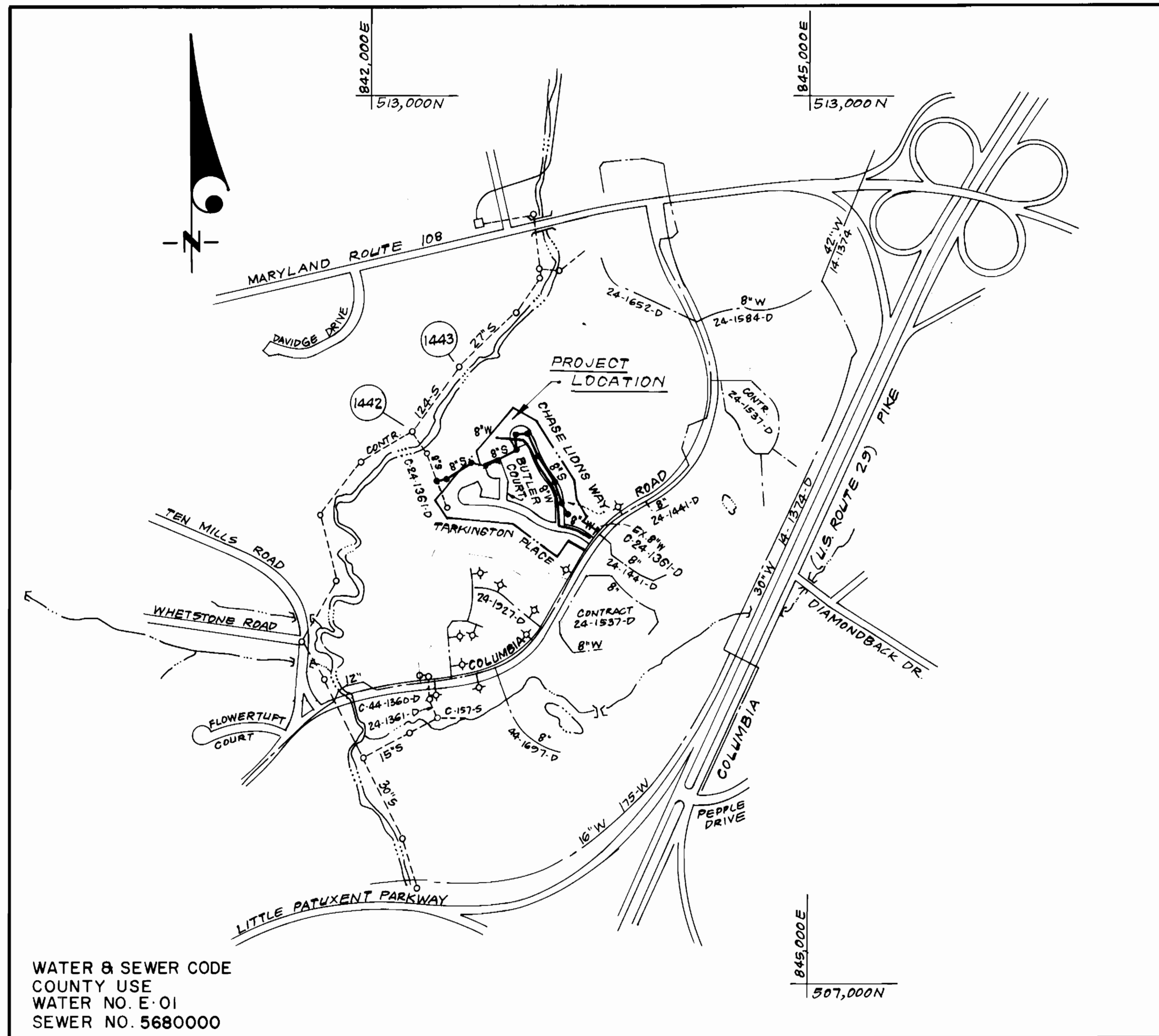


SEWER HOUSE CONNECTION TABLE

LOTS	Inv @ R.	Min. C.	LOTS	Inv @ R.	Min. C.
F-1	352.3	355.3	F-64	344.2	347.4
F-2	352.1	355.3	F-65	344.8	348.1
F-3	352.0	355.3	F-66	345.8	349.2
F-4	351.9	355.2	F-67	346.7	350.1
F-5	351.8	355.0	F-68	347.4	351.0
F-6	350.9	354.5	F-69	348.1	351.8
F-7	350.7	354.0	F-70	348.5	351.8
F-8	350.5	353.7	F-71	349.0	352.3
F-9	350.2	353.4	F-72	349.5	352.8
F-10	349.4	352.6	F-73	350.0	353.2
F-11	348.7	351.9	F-74	350.7	353.9
F-12	348.2	351.4	F-75	351.7	354.9
F-13	347.7	350.9	F-76	351.5	354.7
F-14	347.2	350.5	F-77	351.2	354.4
F-15	346.7	349.9	F-78	351.0	354.2
F-16	345.2	348.5	F-79	347.7	350.9
F-17	341.8	345.0	F-80	346.8	350.0
F-18	340.0	343.2	F-81	346.0	349.3
F-19	338.7	342.0	F-82	344.7	347.9
F-20	337.5	340.8	F-134	344.0	347.3
F-21	336.2	339.4	F-135	342.1	345.2
F-22	335.0	338.2	F-136	341.6	344.7
F-23	333.6	336.9	F-137	340.8	343.9
F-24	331.8	335.1	F-138	339.4	342.5
F-25	330.1	333.4	F-139	338.4	341.5
F-26	328.8	332.0	F-89	328.6	331.8
F-27	327.4	330.6	F-90	328.2	331.4
F-28	326.2	329.5	F-91	327.9	331.3
F-29	324.9	328.2	F-92	327.4	330.6
F-30	323.5	326.9	F-93	327.9	331.2
F-31	322.6	325.9	F-94	328.3	331.5
F-32	321.8	325.2	F-95	328.4	331.8
F-33	321.3	324.7	F-96	328.6	332.0
F-34	320.7	324.0	F-97	328.8	332.3
F-35	320.1	323.3	F-98	328.6	332.0
F-36	321.7	324.9	F-140	331.0	334.0
F-37	322.3	325.5	F-141	331.7	334.7
F-38	322.5	325.7	F-142	332.2	335.2
F-39	323.0	326.2	F-143	332.4	335.6
F-40	323.6	326.8	F-103	333.2	336.5
F-41	324.1	327.3	F-104	334.0	337.3
F-42	324.5	327.7	F-105	335.4	338.6
F-43	324.4	327.6	F-106	336.2	339.5
F-44	324.7	327.9	F-107	341.2	344.4
F-45	324.2	327.4	F-108	342.0	345.3
F-46	341.7	345.1	F-109	343.3	346.6
F-47	331.7	335.1	F-110	344.0	347.3
F-48	331.1	334.4	F-111	345.3	348.6
F-49	328.0	332.3	F-112	346.0	349.4
F-50	326.2	329.4	F-144	347.3	350.6
F-51	325.8	329.0	F-145	348.1	351.3
F-52	326.6	329.9	F-115	348.9	352.3
F-53	326.7	330.0	F-116	349.5	352.8
F-54	326.8	330.0	F-117	350.0	353.3
F-55	326.9	330.0	F-118	350.6	353.8
F-56	326.9	330.3	F-119	350.7	354.0
F-57	324.6	338.0	F-120	351.0	354.2
F-58	326.1	339.4	F-121	351.1	354.3
F-59	327.8	341.0	F-122	352.0	355.2
F-60	329.3	342.6	F-123	352.3	355.3
F-61	340.6	343.9	F-124	352.6	355.6
F-62	341.0	344.4	F-125	353.0	356.0
F-63	342.8	345.4	F-126	353.0	356.1

PHASE TWO
CONT. NO. 24-3267-D

PHASE ONE
CONT. NO. 24-3032-D



WATER & SEWER CODE
COUNTY USE
WATER NO. E-01
SEWER NO. 5680000

VICINITY MAP
SCALE: 1" = 600'

PHASE ONE
CONTRACT NO. 24-3032-D
VILLAGE OF DORSEY'S SEARCH
SECTION 3 AREA I

LOTS F-75 thru 83, 89 thru 98, 103 thru 110, 122 thru 126, and 135 thru 145

HOWARD COUNTY, MARYLAND
DEPARTMENT OF PUBLIC WORKS

Sediment Control Measures will be implemented in accordance with Section 219 of the Specifications & with Road Construction Plan F-31-35; Drawing, Sediment & Erosion Control.

REVIEWED FOR HOWARD SOIL CONSERVATION DISTRICT AND MEETS TECHNICAL REQUIREMENTS
10/24/90
SIGNATURE DATE
U.S. SOIL CONSERVATION SERVICE

This Development Plan is approved for Soil Erosion and Sediment Control by the Howard Soil Conservation District.

APPROVED:
Howard S.C.D. DATE

DEPARTMENT OF PUBLIC WORKS
HOWARD COUNTY, MARYLAND

10/26/90
DIRECTOR OF PUBLIC WORKS, DATE

10/26/90
CHIEF, BUREAU OF ENGINEERING, DATE

CLARK, FINEPROCK & SACKETT, INC.
ENGINEERS - PLANNERS - SURVEYORS
7135 MINSTREL WAY COLUMBIA MARYLAND 21045
(301) 381-7500 BALTO. (301) 621-8100 WASH.



DES. J.T.R.	JTR	2	Rev. SHC Table & Quantities Schedule	11-27-91
JTR	JTR	3	Rev. Quantities - Added 695 LF 1 1/2" WHC, 550 LF 1" WHC deleted	4-10-92
JTR	JTR	4	695 LF 3/4" WHC Lot F-1 Thru F-74	4-10-92
CHK. C.C.M.	BAL	4	Divide Contract Into Two Phases	5-3-92
DATE: Aug 90	BY	NO	REVISION	DATE

TITLE SHEET

600' SCALE MAP NO. 30 BLOCK NO.

TYPE OF BUILDING	Townhouses
NO. OF LOTS	52
NO. OF WHC's	52
NO. OF SHC's	52
DRAINAGE AREA	Little Patuxent

GENERAL NOTES

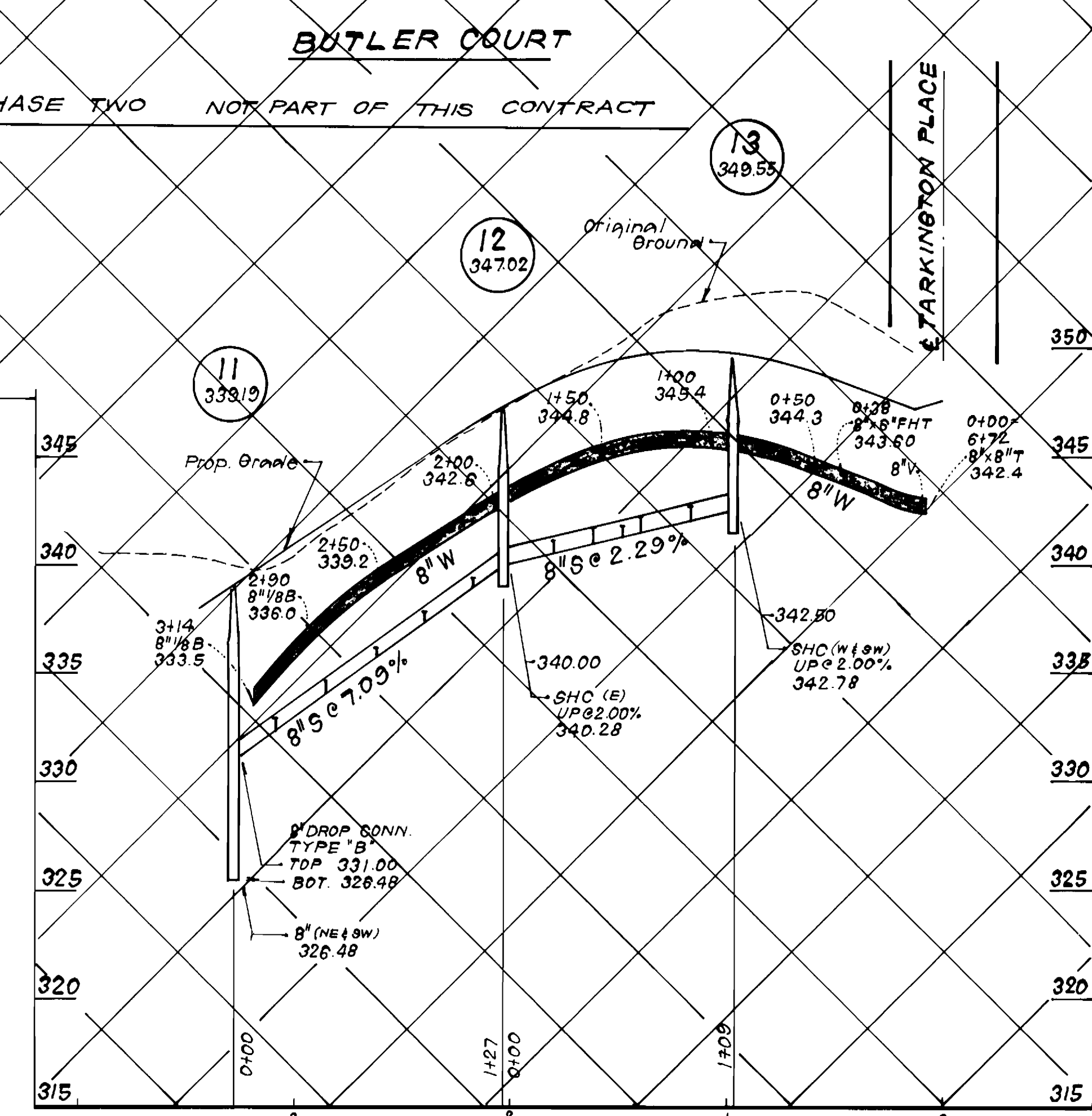
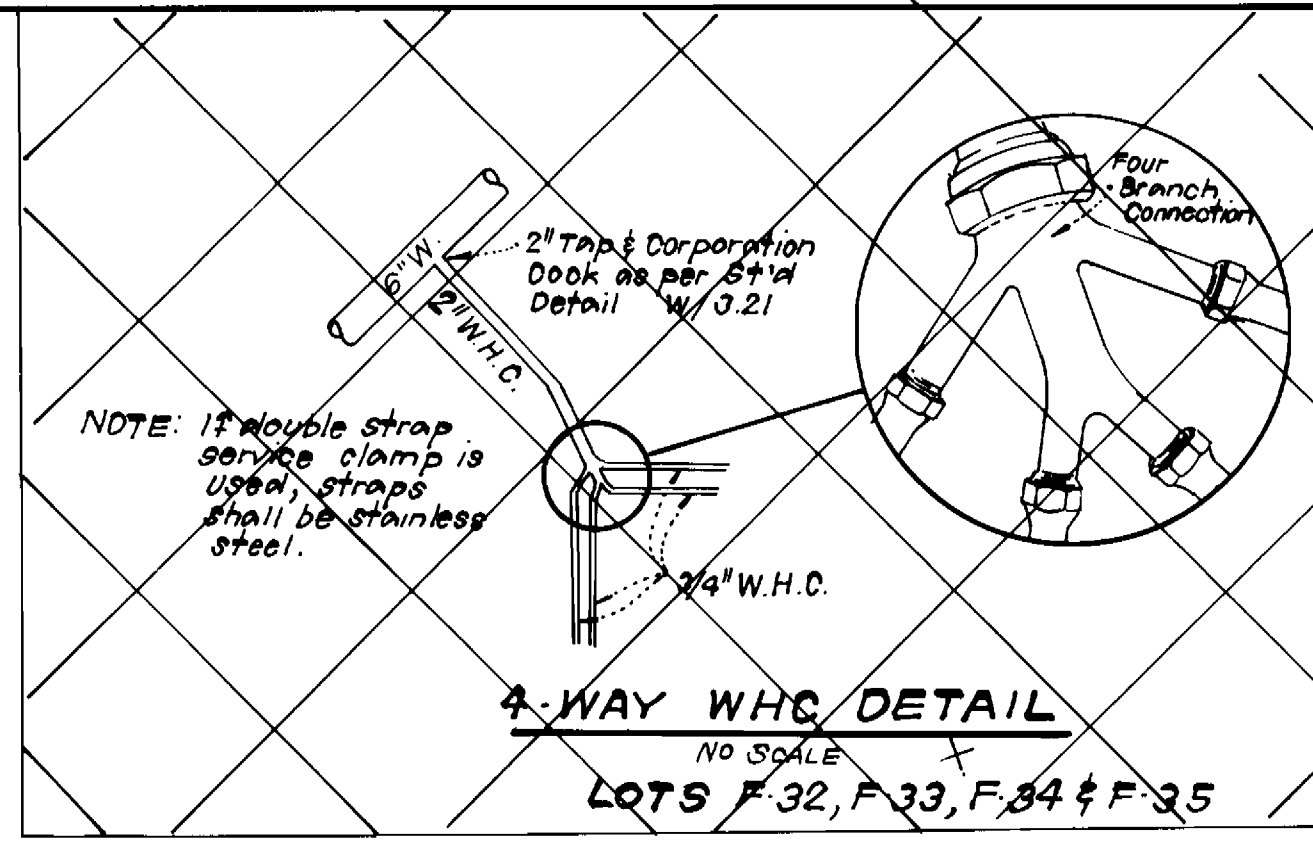
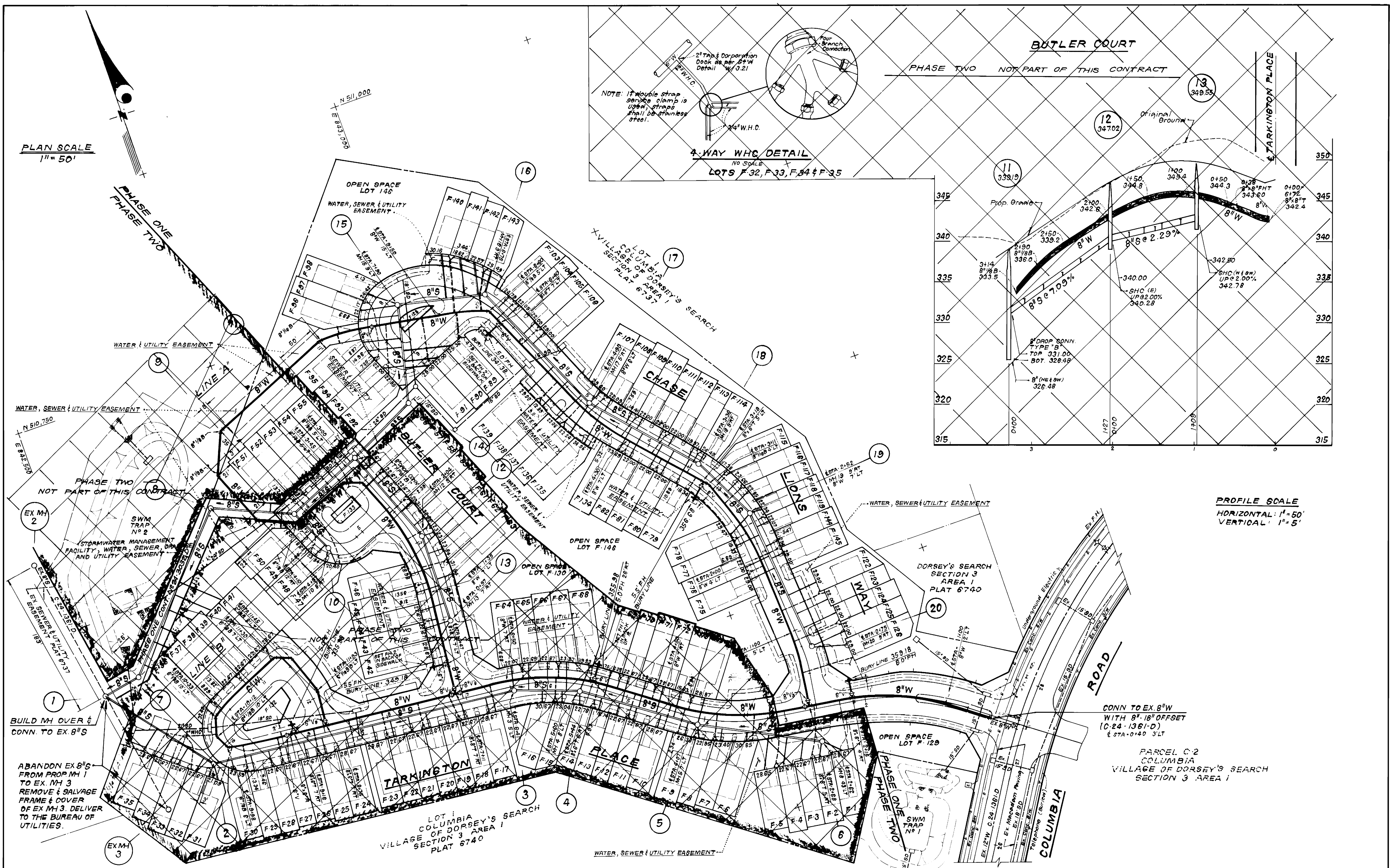
- Approximate location of existing mains are shown. The contractor shall take all necessary precautions to protect existing mains and services and maintain uninterrupted supply. Any damage incurred shall be repaired immediately to the satisfaction of the Inspector, at the contractor's expense.
- All horizontal controls are based on Maryland State Coordinates.
- All vertical controls are based on U.S.G.S. Datum.
- All pipe elevations shown are invert elevations.
- Clear all utilities by a minimum of 6" clear all poles by 2'-0" minimum or tunnel as required. Any cost incurred to the contractor for tunneling or bracing at poles shall be included in unit prices bid for excavation and backfill.
- For details not shown on the drawings use Howard County Standard Details.
- For materials and construction methods use Howard County Standard Specifications and Howard County Design Manual, Volume IV, 1989 Amendments. The Contractor shall have Volume IV, 1989 Amendments on the job site.
- Contractor shall locate existing utilities a minimum of two (2) weeks in advance of construction operations in the vicinity of proposed utilities at his own expense.
- Contractor shall notify the following utilities or agencies at least five (5) working days before starting work shown on these plans.
State Highway Administration - 531-5533
Baltimore Gas & Electric Company - Underground Damage Control - 859-9004
Baltimore Gas & Electric Company - Contractor Services - 850-4620
Baltimore Gas & Electric Company - Trouble Shooting - 298-9001
"Miss Utility" - 1-800-257-7777
Chesapeake & Potomac (C&P) Telephone Company - 1-800-257-7777
Bureau of Utilities Howard County - 992-2366
Colonial Pipeline Company - 795-1390
- Trees are to be protected from damage to maximum extent. Trees located within the construction strip are not to be removed or damaged by the contractor.
- Contractor shall remove trees, stumps, and roots along line of excavation as directed by the Inspector. Payment for such removal shall be included in the unit price bid for excavation and backfill.
- Place regulation "Men Working" and warning signs as required to comply with Maryland State Highway Administration Manual of Traffic Control for Highway Construction and Maintenance Operations.
- All water mains to be D.I.P. Class 52 unless otherwise noted.
- Top of all water mains to have a minimum of 3-1/2' cover unless otherwise noted.
- Valves adjacent to tees shall be strapped to tees.
- Block all fittings with concrete.
- Bury line elevations on fire hydrants shall be set to the elevations shown on the drawings. All fire hydrants shall be strapped and buttressed with concrete in accordance with standard details. Soil around the fire hydrant to be compacted in accordance with Sections 1000 & 1005 of the Standard Specifications.
- All water house connections shall be for an inside meter setting.
- The contractor shall not operate any water main valves on the existing system.
- All sewer mains shall be C.S.P.X., V.C.P.X., or P.V.C., unless otherwise noted.
- The contractor shall provide a joint in all sewer mains within 2'-0" of exterior manhole wall.
- All manholes shall be 4'-0" inside diameter, unless otherwise noted.
- Water main and water house connection lines must have a minimum of one foot separation from the sanitary sewer and sewer house connections as they cross. Except at crossings, water and sewer lines shall have a minimum horizontal separation of 10'.
- Manholes designated thus: WT, shall have a Watertight Frame and Cover.

QUANTITIES			
ITEM	EST'D	AS BUILT	MATERIAL / SUPPLIER
8"W	2,470 L.F.		
6"W	0 L.F.		
1" WHC	1,935 L.F.		
3/4" WHC	865 L.F.		
8"V	7 EA		
6"V (Exc. F.H.)	0		
Fire Hydrants	6 EA		
8" S	2,826 L.F.		
4" SHC	3,485 L.F.		
4'-0" I.D. MH	20 EA		
8" D.C. TYPE "B"	0		
2" WHC	0		
1 1/2" WHC	0		

PHASE ONE
COLUMBIA, VILLAGE OF DORSEY'S SEARCH
SECTION 3 AREA I LOTS F-75 thru 83, 89-98, 103-110, 122-126, 135-145
6TH ELECTION DISTRICT
CONTRACT NO. 24-3032-D

SCALE
AS SHOWN
SHEET
1 OF 4

AS-BUILT



PROFILE SCALE
HORIZONTAL: 1"=50'
VERTICAL: 1"=5'

DEPARTMENT OF PUBLIC WORKS
HOWARD COUNTY, MARYLAND

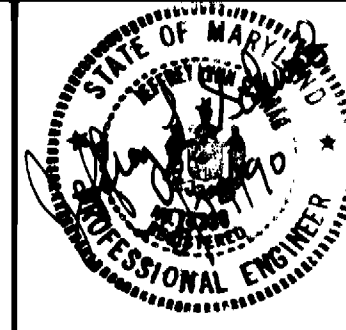
Richard J. T. R. 10/26/90
DIRECTOR OF PUBLIC WORKS DATE

John M. Sackett 10/26/90
CHIEF, BUREAU OF ENGINEERING DATE

John M. Sackett 10/26/90
CHIEF, LAND DEVELOPMENT DIV. DATE

CFB CLARK · FINEPROCK & SACKETT, INC.
ENGINEERS · PLANNERS · SURVEYORS

7135 MINSTREL WAY COLUMBIA MARYLAND 21045
(301) 381-7500 BALTO. (301) 621-8100 WASH.



DES: J.T.R.	JTR 1	Revised Rim Elev. MH-11	Dec. 7, 1990
DRN: J.T.R.	JTR 2	Rev. Lots 83-88, 99-102, 113 & 114 and St. Grades Tarkington Place and Chase Lions Way	Nov. 27, 1991
CHK: C.C.M.	BAL 4	Split Contract into two Phases (see contract No. 24-3267-D)	
DATE: Aug 90	BY: NO.	REVISION	DATE

PLAN & PROFILES OF
WATER & SEWER MAINS

600' SCALE MAP NO. 30 BLOCK NO.

PHASE ONE
COLUMBIA, VILLAGE OF DORSEY'S SEARCH
SECTION 3 AREA I LOTS F-75 thru F-83, 89-98, 109-
119, 122-126, 135-145
6TH ELECTION DISTRICT
CONTRACT NO. 24-3032-D

SCALE
AS SHOWN
SHEET
2 OF 4

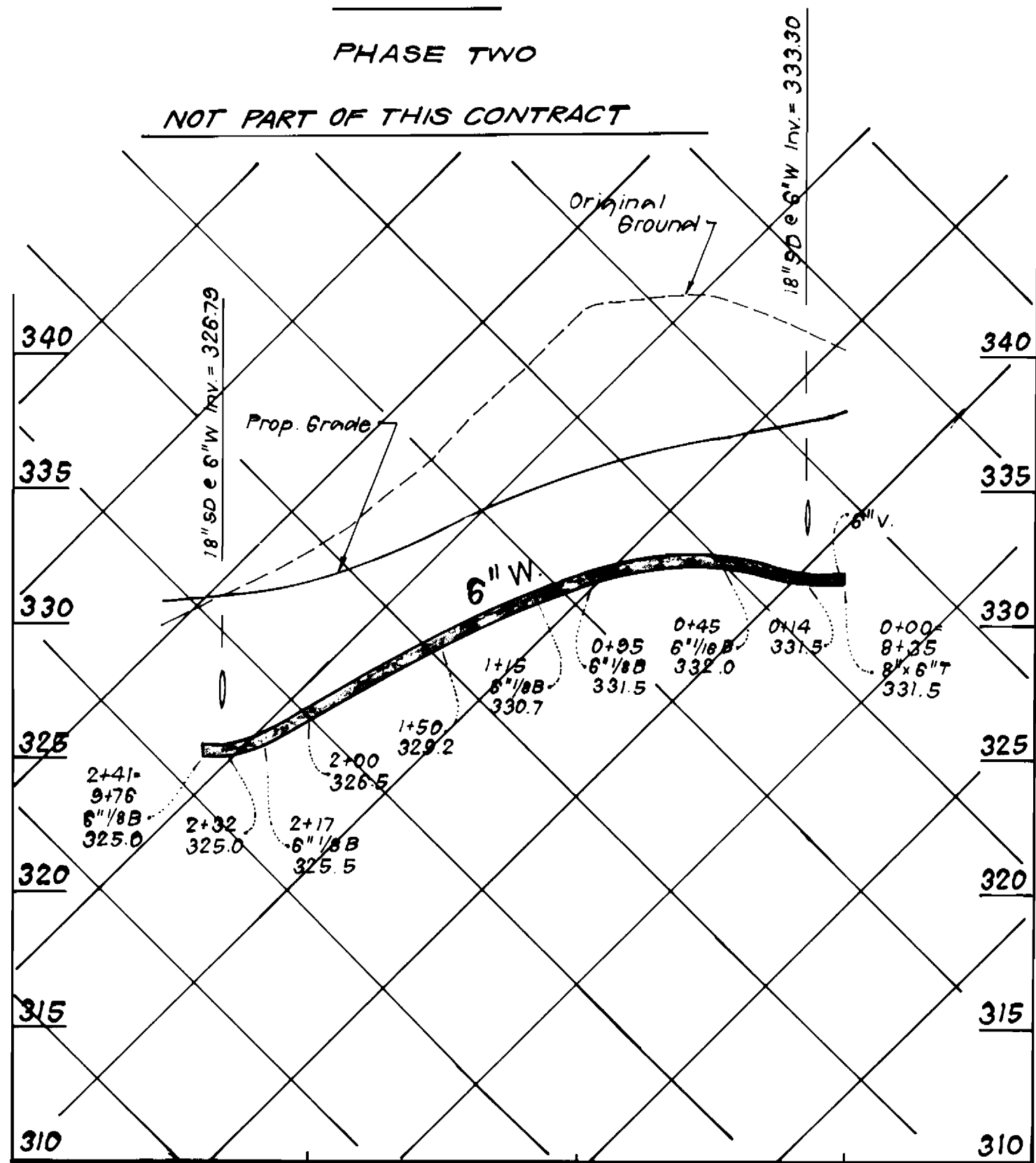
AS-BUILT

TARKINGTON PLACE

LINE "B"

PHASE TWO

NOT PART OF THIS CONTRACT

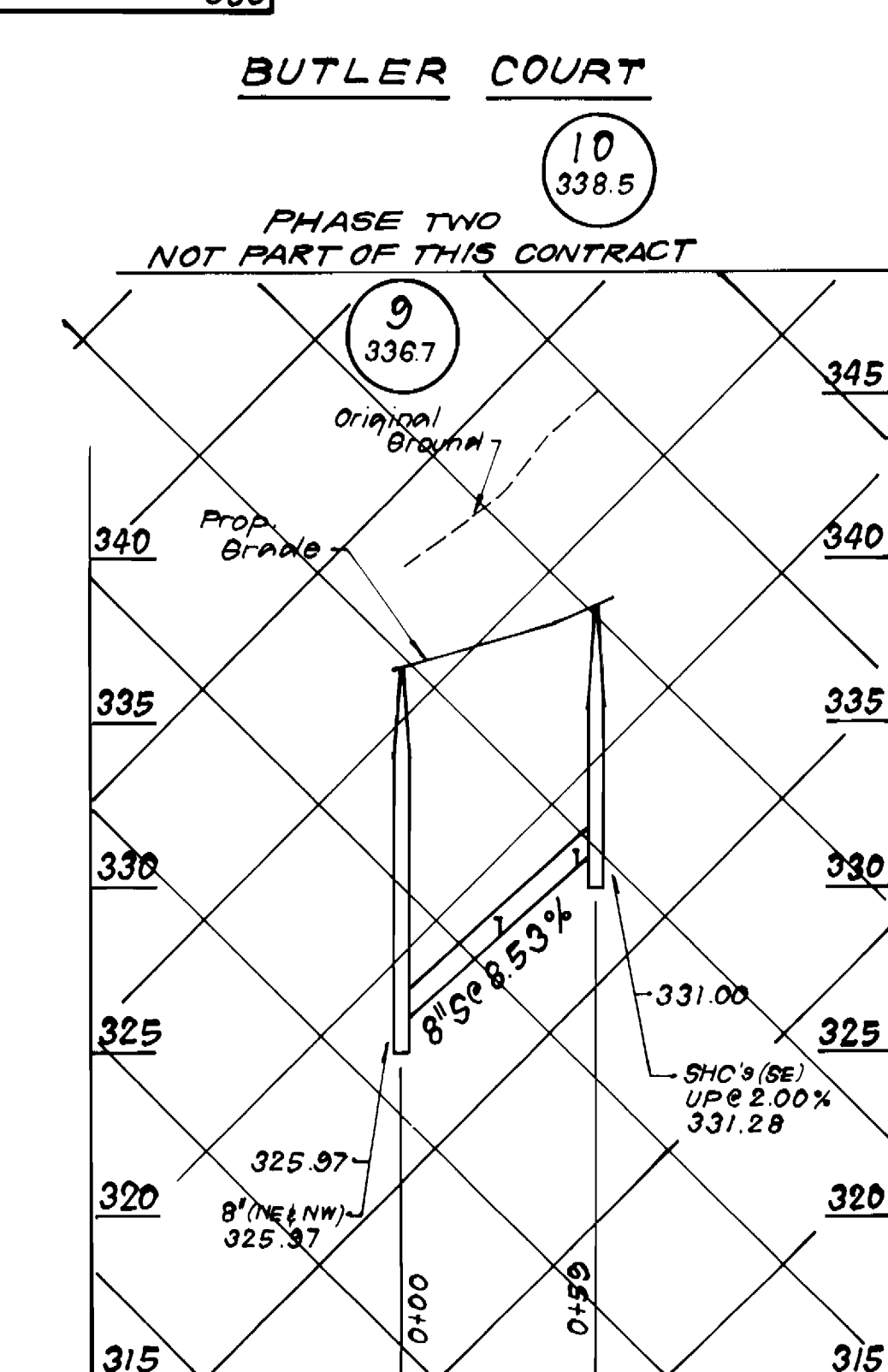
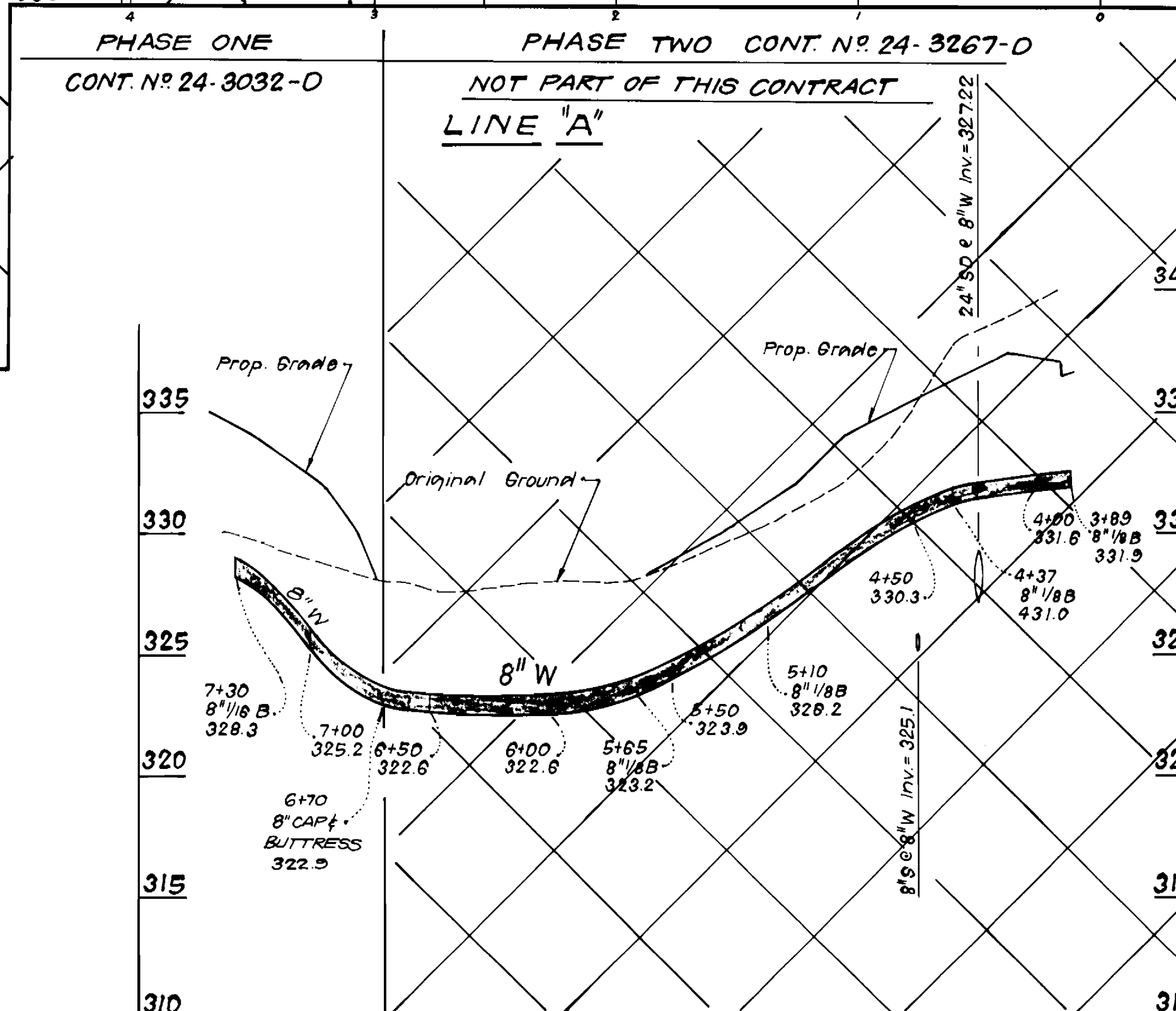
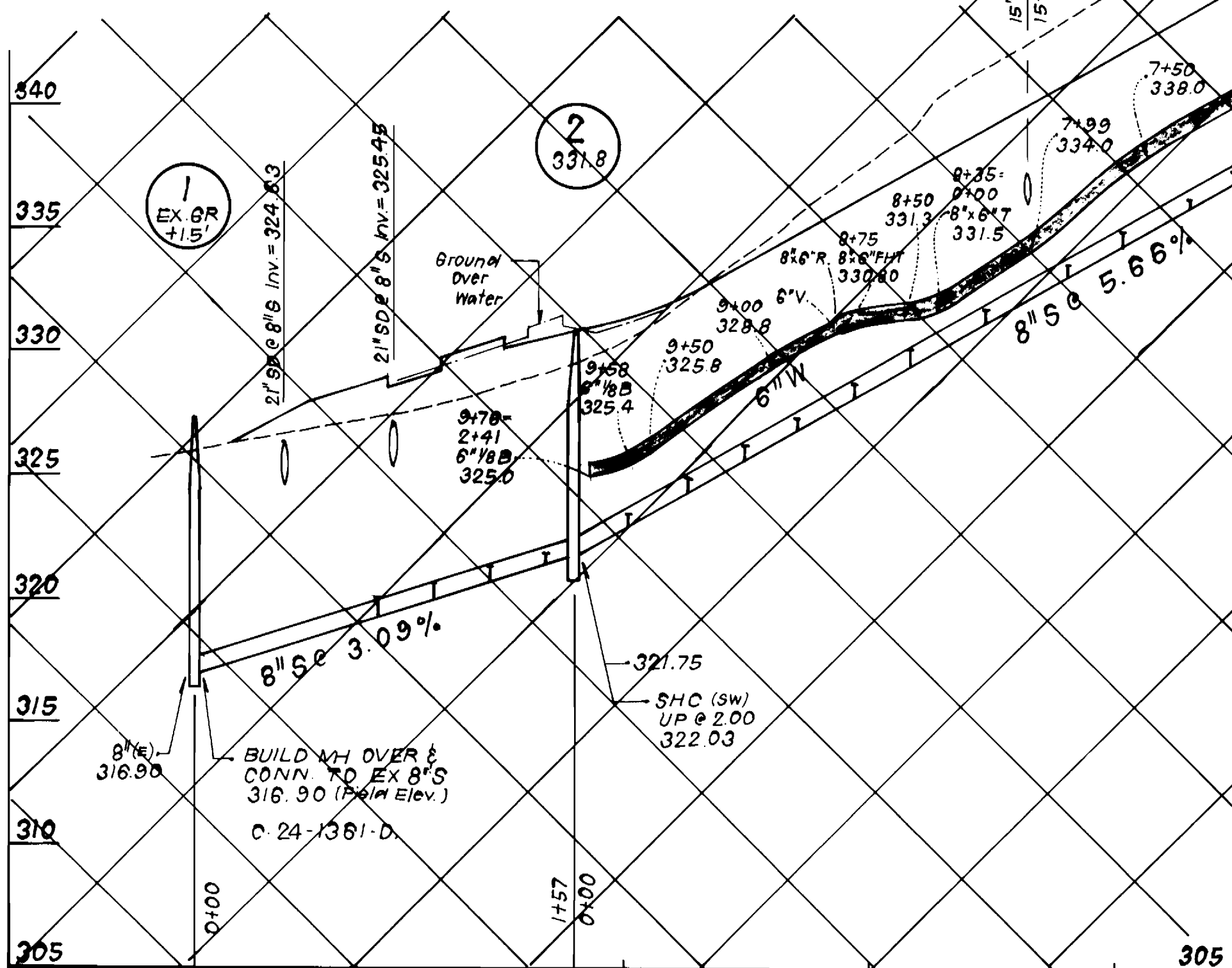
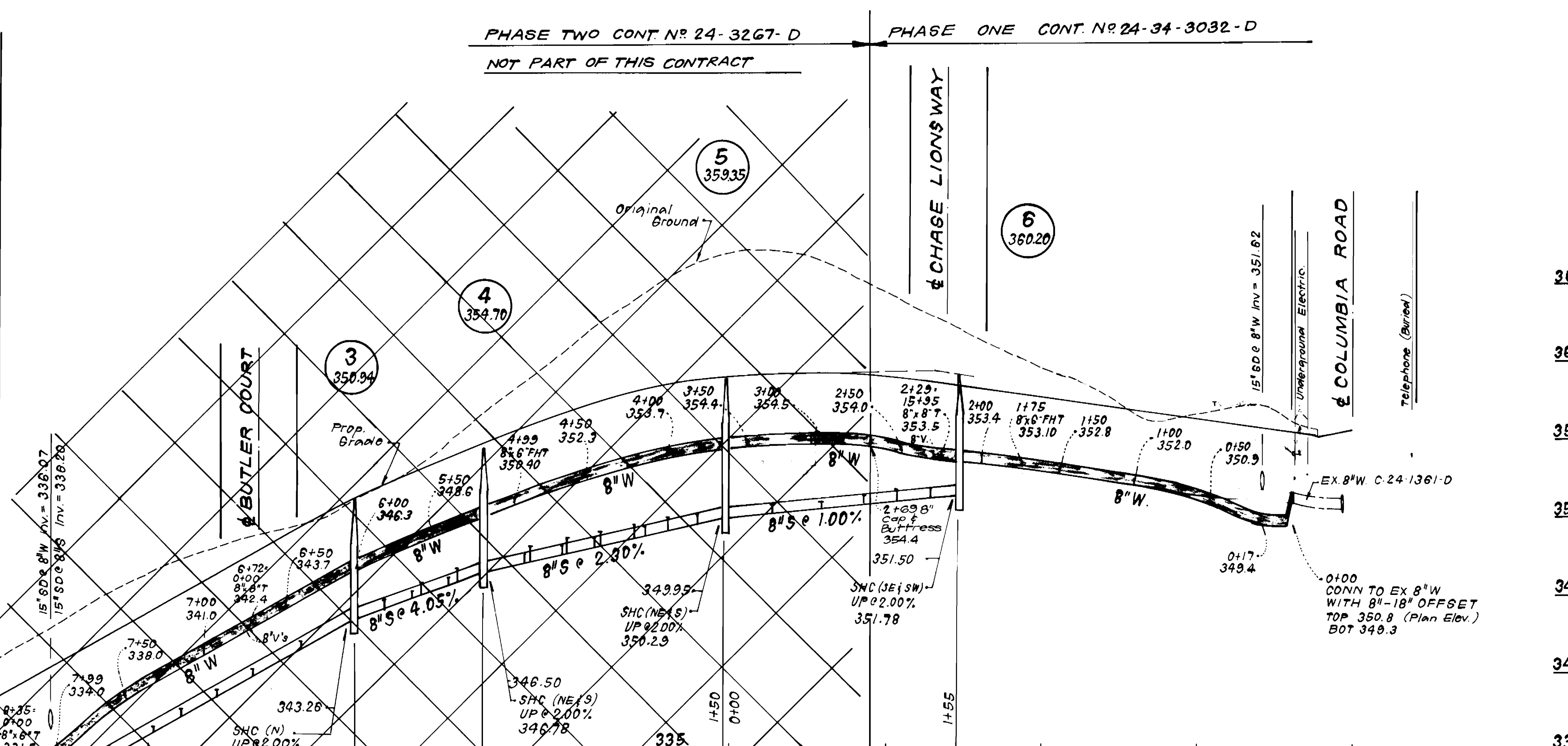


TARKINGTON PLACE

PHASE TWO CONT. NO. 24-3267-D

NOT PART OF THIS CONTRACT

PHASE ONE CONT. NO. 24-34-3032-D



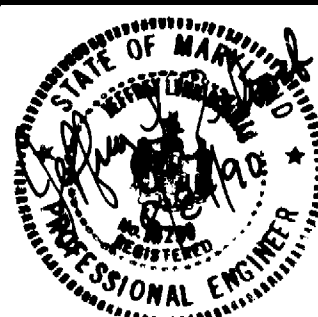
PROFILE SCALE
HORIZONTAL: 1" = 50'
VERTICAL: 1" = 5'

DEPARTMENT OF PUBLIC WORKS
HOWARD COUNTY, MARYLAND



CLARK-FINEFROCK & SACKETT, INC.
ENGINEERS-PLANNERS-SURVEYORS

7135 MINSTREL WAY COLUMBIA MARYLAND 21045
(301) 381-7500 BALTO. (301) 621-8100 WASH.



DES: J.T.R.

DRN: J.T.R.

CHK: C.C.M.

DATE: Aug 90

JTR	1	Revised Rim Elev. M.H. 9	Dec. 7, 1990
JTR	2	Revised Grades Tarkington Place	Nov. 27, 1991
BAL	3	Split Contract into two phases, See Contract 24-3267-D	3-3-92
BY	NO.	REVISION	DATE

PROFILES OF
WATER & SEWER MAINS

600' SCALE MAP NO. 30 BLOCK NO.

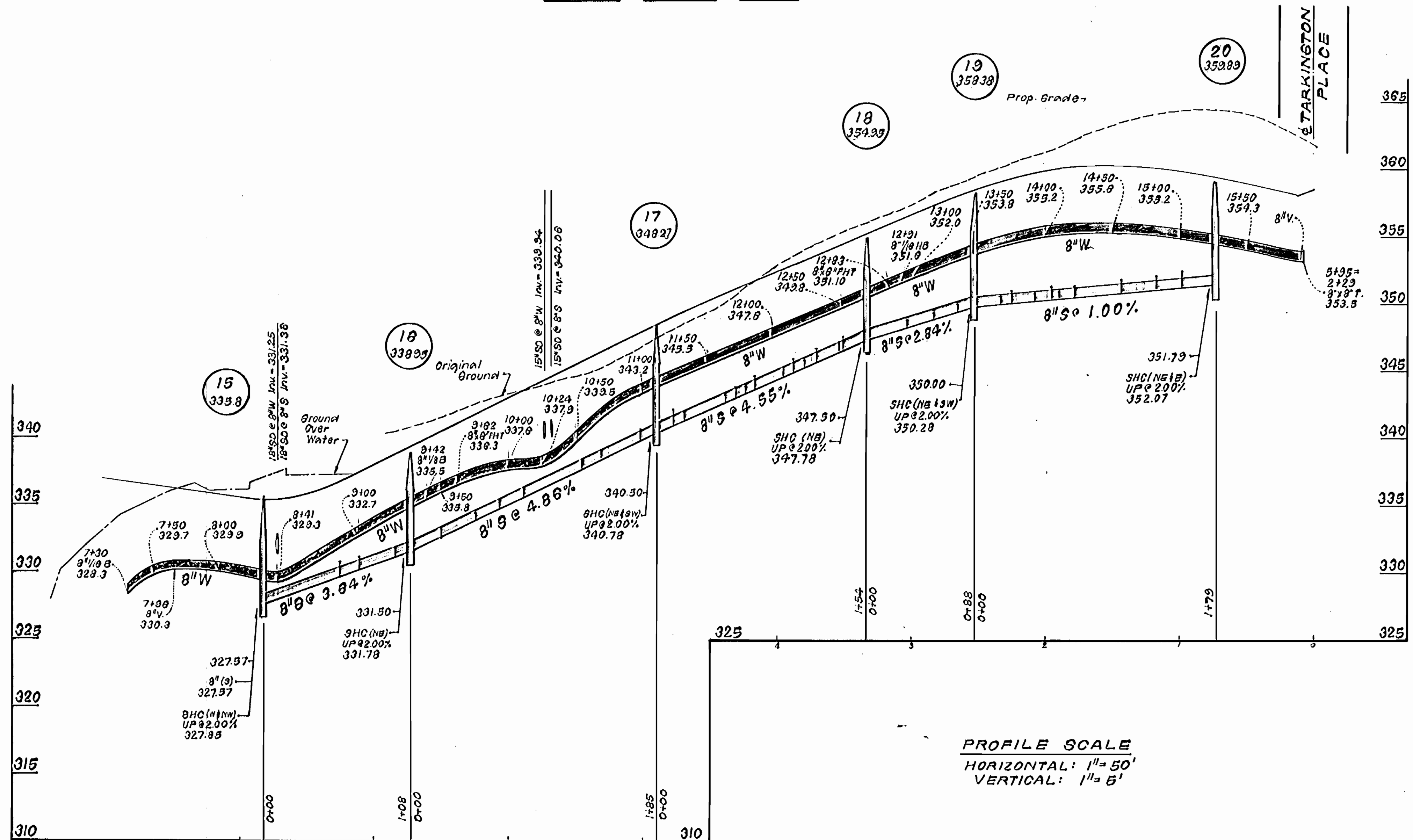
PHASE ONE
COLUMBIA, VILLAGE OF DORSEY'S SEARCH
SECTION 3 AREA I LOTS F-75 thru F-83, 89-98, 103-119, 122-126 & 135-145
6TH ELECTION DISTRICT
CONTRACT NO. 24-3032-D

SCALE
AS SHOWN

SHEET
3 OF 4

AS-BUILT

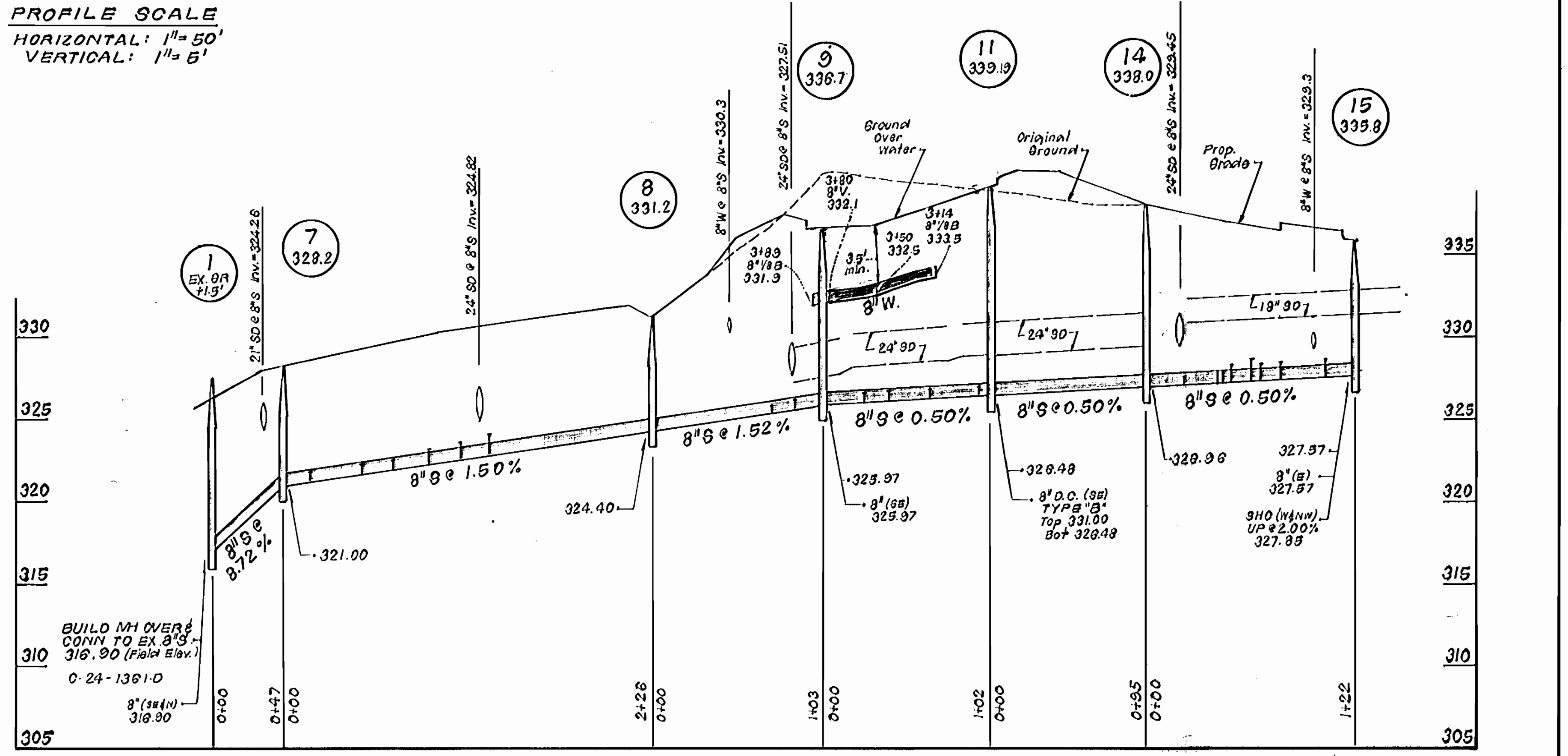
CHASE LIONS WAY



PROFILE SCALE
HORIZONTAL: 1" = 50'
VERTICAL: 1" = 5'

SEWER HOUSE CONNECTION AS-BUILTS											
LOTS	SERVE	1 ST DIST.	2 ND DIST.	LOTS	SERVE	1 ST DIST.	2 ND DIST.	LOTS	SERVE	1 ST DIST.	2 ND DIST.
F-1	S	MH-6	BY ADJUTANT	F-40	S	MH-7	S.D. OUTLET #1	F-19	S	MH-13	F.H.# 1
F-2	S	20'	48'	F-41	S	14'	82'	F-20	S	48'	50'
F-3	S	36'	61'	F-42	S	MH-13	MH-12	F-21	S	62'	61'
F-4	S	MH-6	MH-5	F-43	S	48'	143'	F-22	S	60'	64'
F-5	S	50'	118'	F-44	S	35'	114'	F-23	S	62'	64'
F-6	S	21'	93'	F-45	S	30'	91'	F-24	S	62'	68'
F-7	S	94'	63'	F-46	S	54'	70'	F-25	S	62'	68'
F-8	S	124'	36'	F-47	S	71'	40'	F-26	S	62'	68'
F-9	S	MH-5	MH-4	F-48	S	MH-10	MH-9	F-27	S	MH-14	MH-15
F-10	S	17'	162'	F-49	S	23'	82'	F-28	S	25'	100'
F-11	S	23'	143'	F-50	S	23'	58'	F-29	S	25'	82'
F-12	S	50'	110'	F-51	S	37'	38'	F-30	S	82'	68'
F-13	S	80'	70'	F-52	S	MH-8	MH-9	F-31	S	82'	68'
F-14	S	101'	57'	F-53	S	83'	25'	F-32	S	82'	68'
F-15	S	MH-4	MH-3	F-54	S	MH-11	MH-10	F-33	S	82'	68'
F-16	S	36'	106'	F-55	S	MH-11	MH-10	F-34	S	82'	68'
F-17	S	22'	82'	F-56	S	62'	47'	F-35	S	MH-16	F.H.# 2
F-18	S	25'	60'	F-57	S	41'	60'	F-36	S	31'	55'
F-19	S	42'	38'	F-58	S	20'	58'	F-37	S	45'	54'
F-20	S	MH-3	F.H. BUTLER CT	F-59	S	MH-12	MH-11	F-38	S	71'	60'
F-21	S	40'	80'	F-60	S	100'	27'	F-39	S	86'	68'
F-22	S	68'	77'	F-61	S	87'	46'	F-40	S	MH-17	MH-18
F-23	S	90'	74'	F-62	S	64'	68'	F-41	S	20'	151'
F-24	S	113'	78'	F-63	S	44'	51'	F-42	S	25'	133'
F-25	S	8' V LINE 15' F.H. BUTLER CT	F-64	S	25'	114'	F-43	S	53'	104'	
F-26	S	101'	142'	F-65	S	MH-13	MH-12	F-44	S	62'	80'
F-27	S	68'	120'	F-66	S	110'	18'	F-45	S	62'	61'
F-28	S	66'	100'	F-67	S	80'	31'	F-46	S	F.H.# 1	MH-13
F-29	S	12'	78'	F-68	S	56'	60'	F-47	S	84'	46'
F-30	S	36'	56'	F-69	S	MH-4	MH-3	F-48	S	60'	21'
F-31	S	45'	44'	F-70	S	85'	31'	F-49	S	58'	15'
F-32	S	63'	41'	F-71	S	60'	30'	F-50	S	55'	35'
F-33	S	80'	54'	F-72	S	50'	55'	F-51	S	60'	53'
F-34	S	MH-2	S.D. INLET #12	F-73	S	31'	74'	F-52	S	F.H.# 1	MH-19
F-35	S	74'	51'	F-74	S	36'	101'	F-53	S	68'	28'
F-36	S	80'	26'	F-75	S	48'	122'	F-54	S	85'	16'
F-37	S	112'	23'	F-76	S	MH-5	MH-4	F-55	S	66'	25'
F-38	S	MH-2	S.D. INLET #12	F-77	S	105'	66'	F-56	S	MH-20'	F.H.# 3
F-39	S	24'	23'	F-78	S	84'	84'	F-57	S	80'	120'
F-40	S	45'	71'	F-79	S	65'	105'	F-58	S	60'	105'
F-41	S	68'	47'	F-80	S	47'	126'	F-59	S	52'	88'
F-42	S	91'	29'	F-81	S	31'	158'	F-60	S	45'	62'
F-43	S	MH-1	S.D. OUTLET #1	F-82	S	MH-10	F.H.# 1	F-61	S	45'	45'
F-44	S	20'	76'	F-83	S	83'	122'	F-62	S	MH-17	MH-18
F-45	S	51'	56'	F-84	S	64'	105'	F-63	S	70'	100'
F-46	S	75'	47'	F-85	S	45'	80'	F-64	S	50'	102'
F-47	S	96'	52'	F-86	S	36'	62'	F-65	S	44'	117'

BUTLER COURT



WATER HOUSE CONNECTION AS-BUILT											
LOTS	SERVE	1 ST DIST.	2 ND DIST.	LOTS	SERVE	1 ST DIST.	2 ND DIST.	LOTS	SERVE	1 ST DIST.	2 ND DIST.
F-1	W	71.8'	25.7'	F-31	W	113'	20'	F-59	W	MH-12	MH-11
F-2	W	64.3'	10.6'	F-32	W	120'	24'	F-60	W	MH-13	MH-12
F-3	W	63.5'	10.6'	F-33	W	20'	24'	F-61	W	110'	15'
F-4	W	62'	11.4'	F-34	W	46'	62'	F-62	W	110'	18'
F-5	W	68'	100'	F-35	W	52'	63'	F-63	W	110'	41'
F-6	W	85'	72'	F-36	W	70'	12'	F-64	W	36'	46'
F-7	W	130'	31'	F-37	W	33'	108'	F-65	W	MH-16	F.H.# 2
F-8	W	156'	27'	F-38	W	31'	104'	F-66	W	70'	33'
F-9	W	MH-5	MH-4	F-39	W	74'	23'	F-67	W	46'	65'
F-10	W	21'	134'	F-40	W	78'	24'	F-68	W	20'	60'
F-11	W	44'	115'	F-41	W	117'	102'	F-69	W	36'	105'
F-12	W	85'	74'	F-42	W	124'	103'	F-70	W	MH-5	MH-4
F-13	W	121'	32'	F-43	W	32'	101'	F-71	W	23'	145'
F-14	W	122'	28'	F-44	W	55'	101'	F-72	W	110'	128'
F-15	W	MH-4	MH-3	F-45	W	52'	63'	F-73	W	12'	95'
F-16	W	25'	50'	F-46	W	62'	36'	F-74	W	35'	146'
F-17	W	35'	54'	F-47	W	62'	36'	F-75	W	MH-10	F.H.# 1
F-18	W	74'	36'	F-48	W	54'	24'	F-76	W	80'	50'
F-19	W	70'	36'	F-49	W	48'	24'	F-77	W	63'	19'
F-20	W	58'	58'	F-50	W	30'	72'	F-78	W	51'	40'
F-21	W	78'	65'	F-51	W	30'	72'	F-79	W	62'	58'
F-22	W	50'	58'	F-52	W	30'	72'	F-80	W	MH-11	MH-10
F-23	W	47'	103'	F-53	W	23'	22'	F-81	W	36'	13'
F-24	W	46'	84'	F-54	W	20'	24'	F-82	W	44'	55'
F-25	W	74'	50'	F-55	W	42'	60'	F-83	W	58'	63'
F-26	W	78'	48'	F-56	W	31'	80'	F-84	W	85'	20'
F-27	W	41'	83'	F-57	W	24'	85'	F-85	W	74'	121'
F-28	W	50'	84'	F-58	W	24'	85'	F-86	W	66'	112'
F-29	W	71'	45'	F-59	W	24'	80'	F-87	W	48'	75'
F-30	W	80'	41'	F-60	W	24'	80'	F-88	W	45'	70'
F-31	W	80'	41'	F-61	W	24'	80'	F-89	W	53'	80'
F-32	W	80'	41'	F-62	W	24'	80'	F-90	W	MH-14	MH-13
F-33	W	80'	41'	F-63	W	24'	80'	F-91	W	42'	21'
F-34	W	80'	41'	F-64	W	24'	80'	F-92	W	72'	25'

DEPARTMENT OF PUBLIC WORKS
HOWARD COUNTY, MARYLAND
10/26/90
10-17-90

CLARK-FINEPROCK & SACKETT, INC.
ENGINEERS-PLANNERS-SURVEYORS
7135 MINSTREL WAY COLUMBIA MARYLAND 21045
(301) 381-7500 BALTO. (301) 621-9100 WASH.



DES. J.T.R.	JTR 1	Revised Rim El Mts 911 and Bl. W Sta 3150	Dec. 7, 1990
DRN. J.T.R.	JTR 2	Revised Grades Chase Lions Way	Nov. 27, 1991
CHK. C.C.M.			
DATE 1/19/90	BY NO.	REVISION	DATE

PROFILES OF
WATER & SEWER MAINS
800'S SCALE MAP NO. 30 BLOCK NO.

PHASE ONE
COLUMBIA, VILLAGE OF DORSEY'S SEARCH
SECTION 3 AREA I LOTS 75 thru 83, 88-98, 103-113
123-128 and 135-145
6TH ELECTION DISTRICT
CONTRACT NO. 24-3032-D
SCALE AS SHOWN
SHEET 4 OF 4