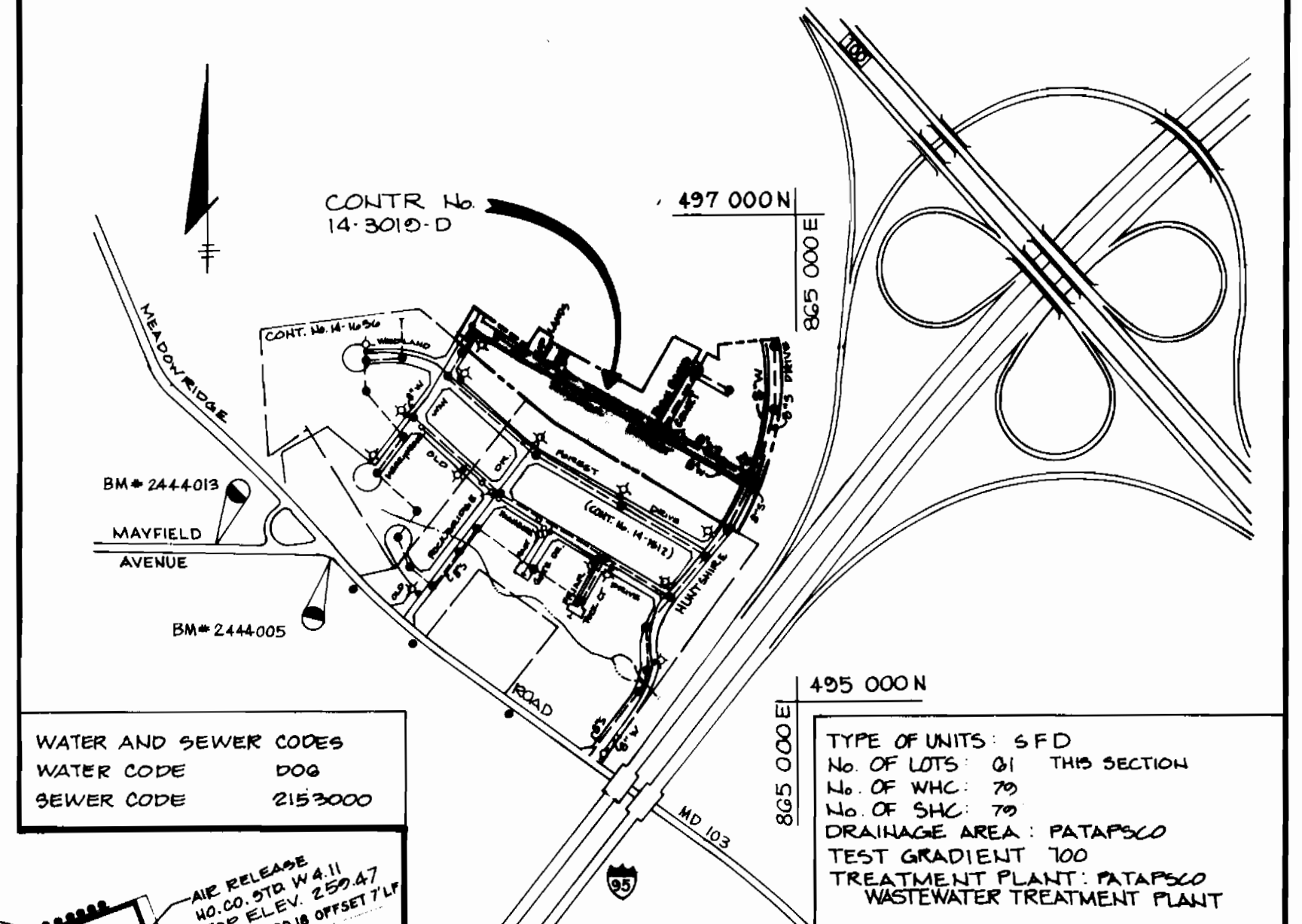


NOTE: EXISTING VALVES AT THE INTERSECTIONS OF HUNTSHIRE DRIVE AND MEADOWRIDGE ROAD, HUNTSHIRE DRIVE AND OLD HIGHGATE DRIVE, AND HUNTSHIRE DRIVE AND WOODLAND FOREST DRIVE, WILL NEED TO BE SHUT TO CONNECT TO EXISTING WATER ON HUNTSHIRE DRIVE. THIS WILL AFFECT EXISTING LOTS 4-15, 45, 46 AND 50-51 OF SECTION 1. EXISTING VALVE AT THE INTERSECTION OF MERRYMAKER WAY AND WOODLAND FOREST DRIVE WILL NEED TO BE SHUT TO CONNECT TO EXISTING WATER ON MERRYMAKER WAY. THIS WILL AFFECT LOTS 146 AND 147 IN SECTION 2.

ITEMS	QUANTITIES ESTIMATED	AS-BUILT	
		QUANTITIES	MANUFACTURER/SUPPLIER
AIR RELEASE VALVES	1 Ea		
8" WATER	2700 LF		
6" WATER	155 LF		
8" VALVES	6 Ea		
FIRE HYDRANTS	4 Ea		
1" WHC	720 LF		
3/4" WHC	780 LF		
8" SEWER	2242 LF		
MANHOLES	11 Ea		
8" SHC	1980 LF		
6" VALVES	1 Ea		
4" WATER	193 LF		
4" VALVES	1 Ea		

BENCH MARKS

NO. 00 BM # 2444005	ELEV. 271.240
CONCRETE MONUMENT 0.5' BELOW SURFACE	E. 86312.6 10
H 405588.271	
NO. 00 BM # 2445001	ELEV. 245.095
CONCRETE MONUMENT 0.1' BELOW SURFACE	E. 864418.470
H 404663.186	



TEST PIT DATA	
T.P. NO. 1	TOP OF 26" GAS MAIN ELEVATION 250.57 INV. 230.20
T.P. NO. 2	TOP OF 26" GAS MAIN ELEVATION 261.51 INV. 270.15

PLAN
SCALE: 1" = 50'

GENERAL NOTES

- PART I - APPROXIMATE LOCATION OF EXISTING MAINS ARE SHOWN. THE CONTRACTOR SHALL TAKE ALL NECESSARY PRECAUTIONS TO PROTECT EXISTING MAINS AND SERVICES AND MAINTAIN UNINTERRUPTED SUPPLY. ANY DAMAGE INCURRED SHALL BE REPAIRED IMMEDIATELY TO THE SATISFACTION OF THE ENGINEER AT THE CONTRACTOR'S EXPENSE. ALL HORIZONTAL CONTROLS ARE BASED ON MARYLAND STATE COORDINATES.
- ALL VERTICAL CONTROLS ARE BASED ON U.S.C. D. DATA.
 - ALL PIPE ELEVATIONS SHOWN ARE INVERT ELEVATIONS.
 - CLEAR ALL UTILITIES BY A MINIMUM OF 6". CLEAR ALL POLES BY 2'-0" MINIMUM OR TUNNEL AS REQUIRED. THE OWNER HAS CONTACTED THE UTILITY COMPANIES AND HAS MADE ARRANGEMENTS FOR BRACING OF POLES AS SHOWN ON THE DRAWINGS. IN THE EVENT THE CONTRACTOR'S WORK REQUIRES THE BRACING OF ADDITIONAL POLES, ANY COST INCURRED BY THE OWNER FOR THE BRACING OF ADDITIONAL POLES OR DAMAGES SHALL BE DEDUCTED FROM MONEY OWED THE CONTRACTOR. THE CONTRACTOR SHALL COORDINATE WITH THE UTILITY COMPANIES TO SCHEDULE THE BRACING OF THE POLES.
 - FOR DETAILS NOT SHOWN ON THE DRAWINGS, AND FOR MATERIALS AND CONSTRUCTION METHODS, USE HOWARD COUNTY DESIGN MANUAL VOLUME IV, STANDARD SPECIFICATIONS AND DETAIL FOR CONSTRUCTION. THE CONTRACTOR SHALL HAVE A COPY OF VOLUME IV ON THE JOB.
 - WHERE TEST PITS HAVE BEEN MADE ON EXISTING UTILITIES, THEY ARE NOTED BY THE SYMBOL AT THE LOCATION OF THE TEST PIT. A NOTE OR NOTES CONTAINING THE RESULTS OF THE TEST PIT OR PITS IS INCLUDED ON THE DRAWINGS. EXISTING UTILITIES IN THE VICINITY OF THE PROPOSED WORK FOR WHICH TEST PITS HAVE NOT BEEN MADE SHALL BE LOCATED BY THE CONTRACTOR TWO WEEKS IN ADVANCE OF CONSTRUCTION OPERATIONS AT HIS OWN EXPENSE. CONTRACTOR SHALL NOTIFY THE FOLLOWING UTILITY COMPANIES OR AGENCIES AT LEAST FIVE WORKING DAYS BEFORE STARTING WORK SHOWN ON THESE PLANS:
- STATE HIGHWAY ADMINISTRATION.....531-5533
 - BALTIMORE GAS & ELECTRIC CO.850-4820
 - BALTIMORE GAS & ELECTRIC CO.787-9088
 - UNDERGROUND DAMAGE CONTROL.....787-9088
 - MISS UTILITY.....1-800-257-7777
 - COLONIAL PIPELINE CO.....795-1390
 - BUREAU OF UTILITIES.....313-4900
 - HOWARD CO. DEPT. OF PUBLIC WORKS.....313-4900
- TREES AND SHRUBS ARE TO BE PROTECTED FROM DAMAGE TO MAXIMUM EXTENT. TREES AND SHRUBS LOCATED WITHIN THE CONSTRUCTION STRIP ARE NOT TO BE REMOVED OR DAMAGED BY THE CONTRACTOR. CONTRACTOR SHALL REMOVE TREES, STUMPS AND ROOTS ALONG LINE OF EXCAVATION. PAYMENT FOR SUCH REMOVAL SHALL BE INCLUDED IN THE UNIT PRICE BID FOR CONSTRUCTION OF THE MAIN.
- PART II - WATER
- ALL WATER MAINS TO BE D.I.P. CLASS 52 UNLESS OTHERWISE NOTED.
 - TOPS OF ALL WATER MAINS TO HAVE A MINIMUM OF 3-1/2" COVER UNLESS OTHERWISE NOTED.
 - VALVES ADJACENT TO TEES SHALL BE STRAPPED TO TEES.
 - ALL FITTINGS SHALL BE BUTTRESSED OR ANCHORED WITH CONCRETE IN ACCORDANCE WITH THE STANDARD DETAILS UNLESS OTHERWISE PROVIDED FOR ON THE DRAWINGS.
 - FIRE HYDRANTS SHALL BE SET TO THE BURY LINE ELEVATIONS SHOWN ON THE DRAWINGS. ALL FIRE HYDRANTS SHALL BE RESTRAINED AND BUTTRESSED WITH CONCRETE IN ACCORDANCE WITH STANDARD DETAILS W.11 AND W.11.1 OF THE STANDARD SPECIFICATIONS. SOIL AROUND THE FIRE HYDRANT SHALL BE COMPACTED IN ACCORDANCE WITH SECTION 1005 AND 1009 OF THE STANDARD SPECIFICATIONS.
 - THE CONTRACTOR SHALL NOT OPERATE ANY WATER MAIN VALVES ON THE EXISTING WATER SYSTEM.
 - ALL WATER HOUSE CONNECTIONS SHALL BE FOR INSIDE METER SETTING UNLESS OTHERWISE NOTED ON PLANS OR IN SPECIFICATIONS.
- PART III - SEWER
- ALL SEWER MAINS SHALL BE DIP, RCP, VCPX, CSPX, RSP AND P.V.C. UNLESS OTHERWISE NOTED.
 - THE CONTRACTOR SHALL PROVIDE A JOINT IN ALL SEWER MAINS WITHIN 2' - 0" OF EXTERIOR MANHOLE WALL.
 - ALL MANHOLES SHALL BE 4' - 0" INSIDE DIAMETER UNLESS OTHERWISE NOTED.
 - FORCE MAINS SHALL BE D.I.P. ONLY.
 - MANHOLES SHOWN WITH 12" AND 16" WALLS ARE FOR BRICK MANHOLES ONLY.
 - MANHOLES DESIGNATED W.T. IN PLAN AND PROFILE SHALL HAVE WATERTIGHT FRAME AND COVERS, STANDARD DETAIL G5.52, WHERE WATERTIGHT MANHOLE FRAME AND COVER IS USED, SET TOP OF FRAME 1' - 0" ABOVE FINISHED GRADE UNLESS OTHERWISE NOTED ON THE DRAWINGS.
 - HOUSE(S) WITH THE SYMBOL "C.N.S." INDICATES THAT CELLAR CANNOT BE SERVED.
- GENERAL NOTES CONTINUED
- THE CONTRACTOR SHALL NOTIFY THE BUREAU OF HIGHWAYS, HOWARD COUNTY, AT (410) 318-2548 AT LEAST FIVE WORKING DAYS BEFORE ANY OPEN CUT OF ANY COUNTY ROAD OR BORING/PILE OPERATION ON COUNTY ROADS FOR LAYING WATER/SEWER MAINS OR HOUSE CONNECTIONS. THE APPROVAL OF THESE DRAWINGS WILL CONSTITUTE COMPLIANCE WITH ALL REQUIREMENTS PER SECTION 18.11(a) OF THE HOWARD COUNTY CODE.

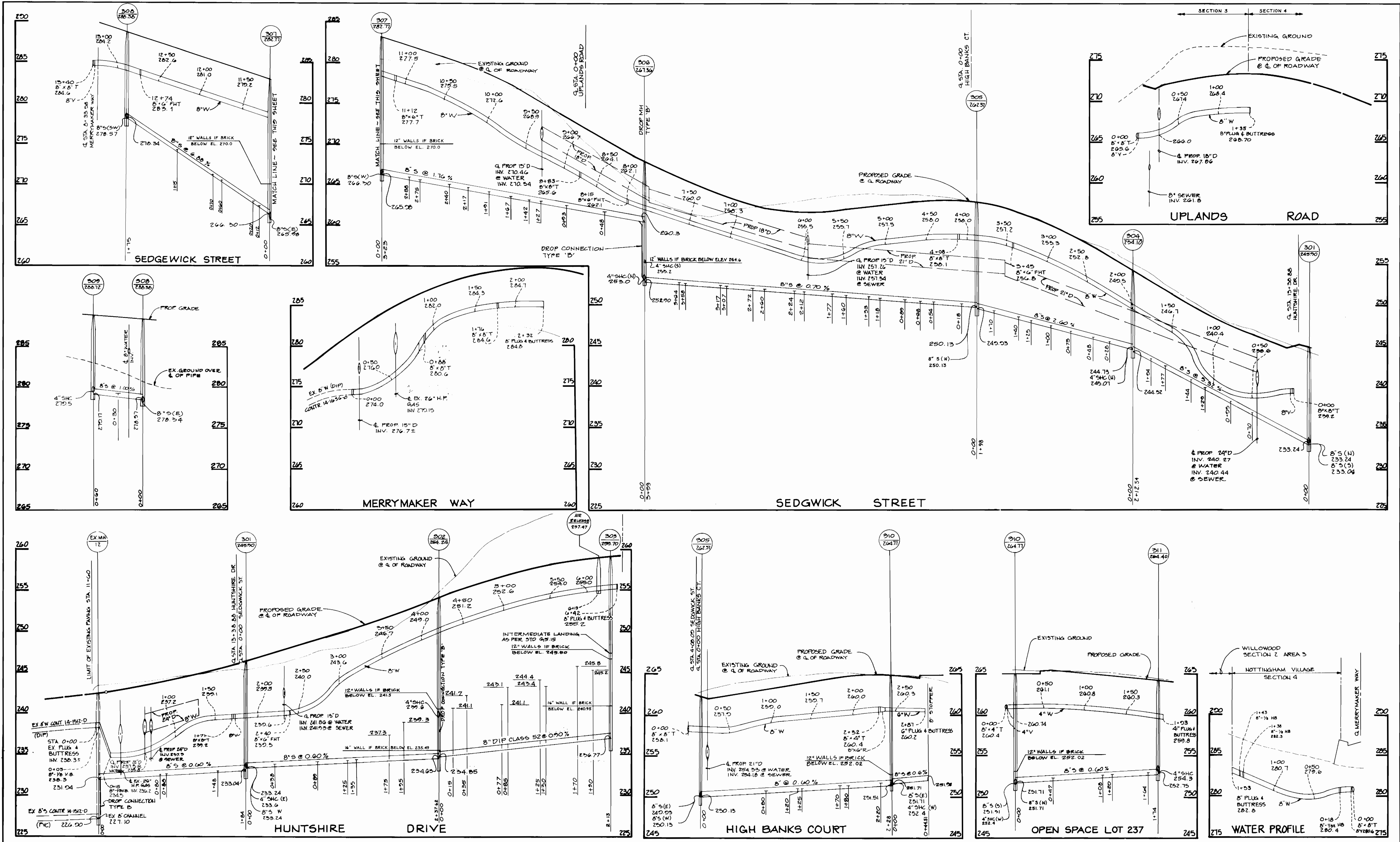
HOWARD SOIL CONSERVATION DISTRICT:
REVIEWED FOR HOWARD SOIL CONSERVATION DISTRICT
AND MEETS TECHNICAL REQUIREMENTS

James M. Helms 1/25/93
U.S. SOIL CONSERVATION SERVICE

THIS PLAN IS APPROVED FOR SOIL EROSION AND SEDIMENT CONTROL BY THE HOWARD SOIL CONSERVATION DISTRICT.

John R. Robertson 3/25/93
HOWARD SOIL CONSERVATION DISTRICT

SEDIMENT CONTROL MEASURES FOR THIS CONTRACT WILL BE IMPLEMENTED IN ACCORDANCE WITH SECTION 219 OF THE HOWARD COUNTY STANDARD SPECIFICATIONS AND AS PER F-92-01 ROAD CONSTRUCTION PLANS



DEPARTMENT OF PUBLIC WORKS
 HOWARD COUNTY, MARYLAND

Director of Public Works: [Signature] DATE: 4-5-93
 Chief, Bureau of Engineering: [Signature] DATE: 4-5-93
 Chief, Bureau of Utilities: [Signature] DATE: 3-23-93
 Chief, Land Development Division: [Signature] DATE: [Signature]

T.S.A. GROUP INC.
 planning • engineering • surveying
 8480 Baltimore National Pike • Suite 418
 Ellicott City, Maryland 21043



DES: DAM
 DRN: CAB
 CHK: JME
 DATE: 11/15/92
 BY: JWG
 NO. []

INDICATE DROP CONNECTION AT MH 202 & 206
 REVERSE 6" PLUG TO 4" PLUG ON 4" W LOT 237

REVISIONS: [] DATE: 5/11/93

PROFILES OF
 WATER & SEWER MAINS

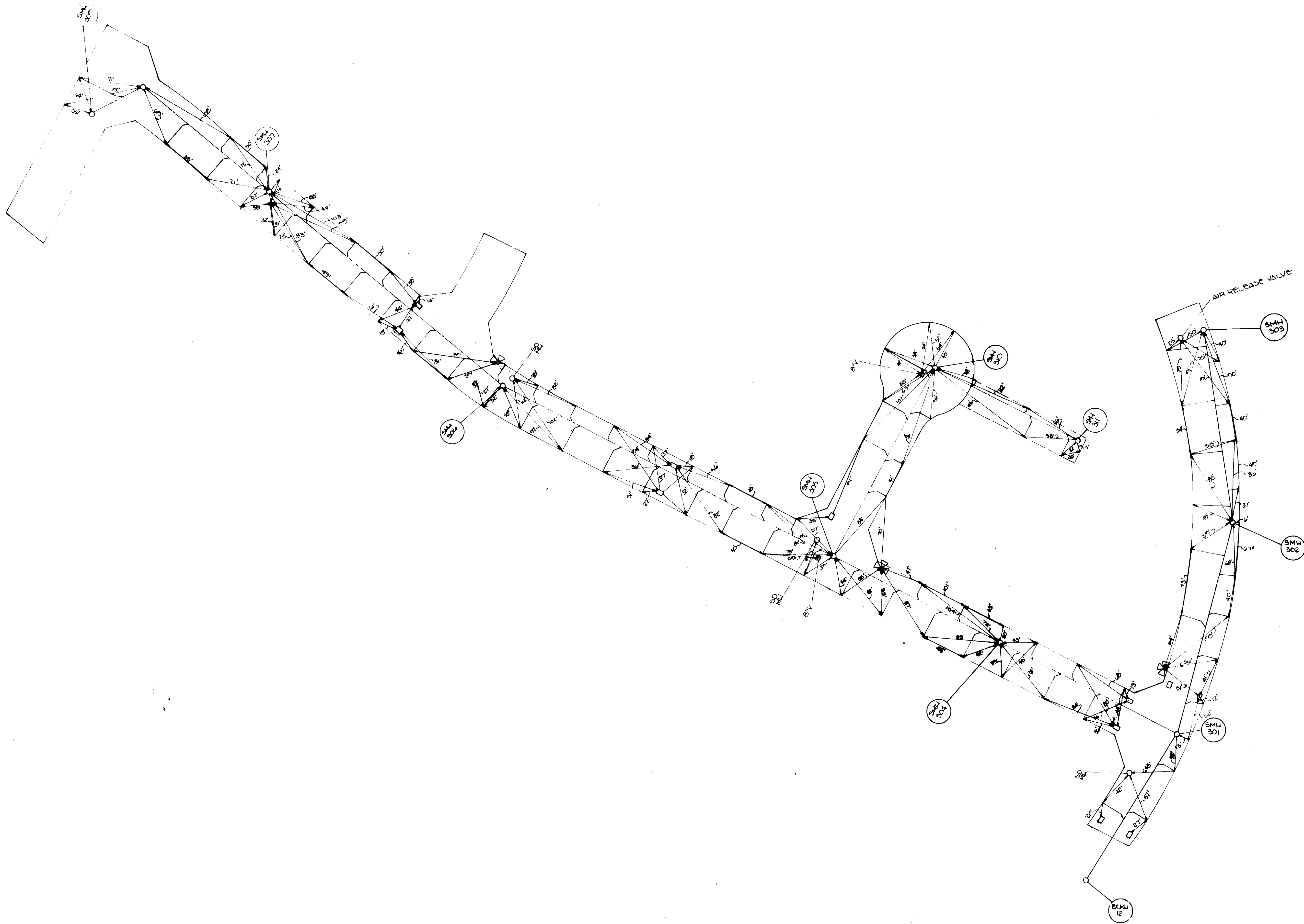
600 SCALE MAP NO. 38
 BLOCK NO. 15

NOTTINGHAM VILLAGE
 SECTION 3
 LOTS 176 THRU 242
 1ST ELECTION DISTRICT

CONTRACT NO. 14-3010-D

SCALE
 HORIZ. = 1" = 50'
 VERT. = 1" = 5'

SHEET
 2 OF 2



DEPARTMENT OF PUBLIC WORKS
HOWARD COUNTY, MARYLAND

DEPARTMENT OF PUBLIC WORKS DATE CHIEF, BUREAU OF ENGINEERING DATE

DES:					
DRN:					
CHK:					
DATE:	BY	NO.	REVISION	DATE	600' SCALE MAP NO.

BLOCK NO.

NOTTINGHAM VILLAGE
SEWER AS-BUILT

14-3019-D

SCALE
AS
SHOWN

SHEET
OF

AS-BUILT 11/19/04