

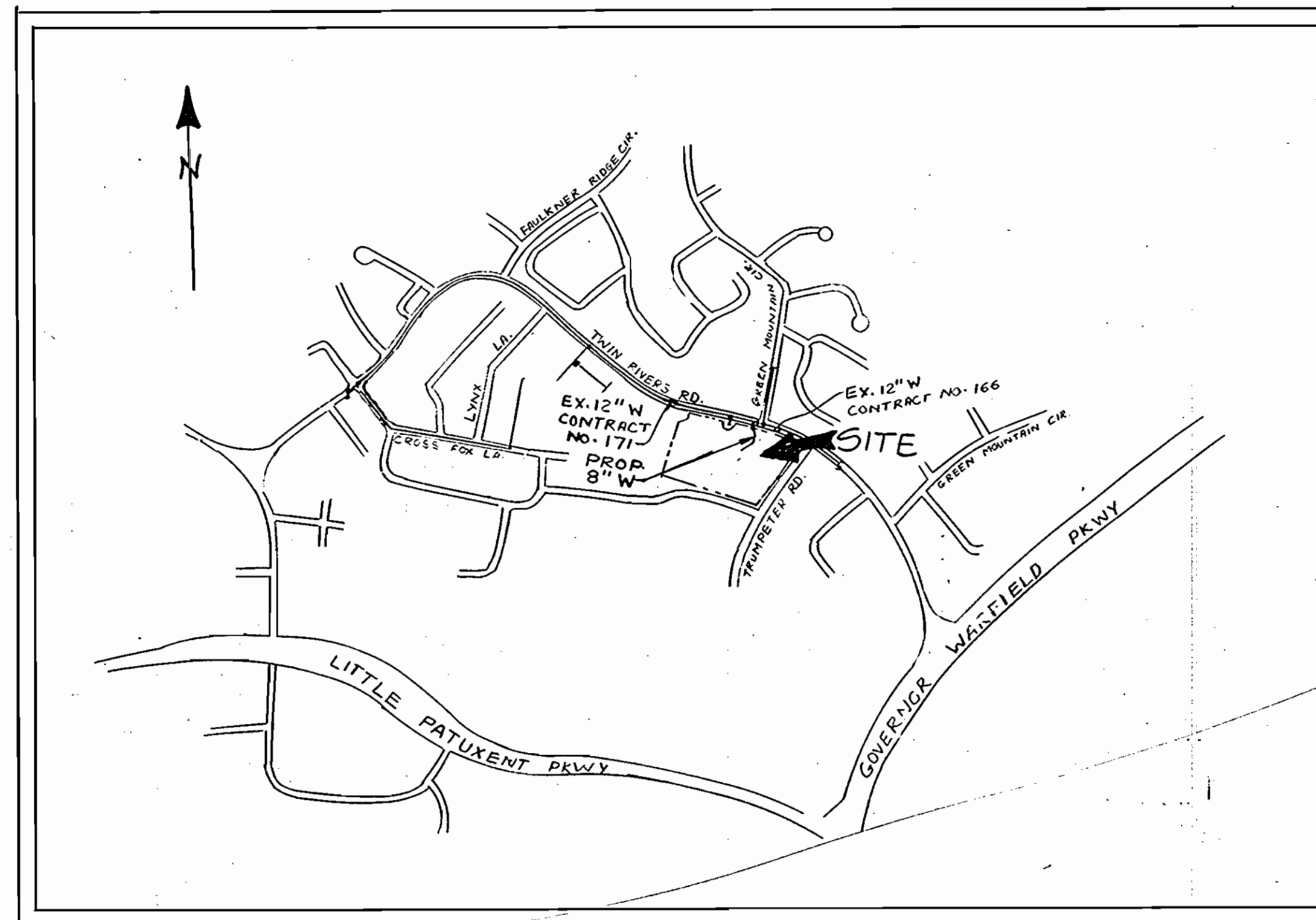
WILDE LAKE INTERFAITH CENTER

HOWARD COUNTY, MARYLAND DEPARTMENT OF PUBLIC WORKS

GENERAL NOTES

- ALL WATER MAIN TO BE D.I.P. UNLESS SHOWN. ALL FITTINGS FOR THE 8" MAIN TO BE D.I.P. COMPACT FITTINGS (SEE NOTE #20).
- TOP OF ALL WATER MAINS TO HAVE A MINIMUM OF 3.5 FT. COVER UNLESS OTHERWISE NOTED.
- VALVES ADJACENT TO TEES SHALL BE STRAPPED TO TEES.
- BLOCK ALL FITTING WITH CONCRETE. SEE STANDARDS BOUND IN SPECIFICATIONS.
- BURY LINE ELEVATIONS ON FIRE HYDRANTS SHALL BE SET TO THE ELEVATIONS SHOWN ON THE DRAWINGS. ALL FIRE HYDRANTS SHALL BE STRAPPED AND OUTTRESSED WITH CONCRETE IN ACCORDANCE WITH STANDARDS DETAILS. SOIL AROUND THE FIRE HYDRANT TO BE COMPACTED IN ACCORDANCE WITH SECTION 18.83 & 18.88 OF THE STANDARD SPECIFICATIONS.
- APPROXIMATE LOCATIONS OF EXISTING MAINS ARE SHOWN. THE CONTRACTOR SHALL TAKE ALL NECESSARY PRECAUTIONS TO PROTECT EXISTING MAINS AND SERVICES AND MAINTAIN UNINTERRUPTED SUPPLY. ANY DAMAGE INCURRED SHALL BE REPAIRED IMMEDIATELY TO THE SATISFACTION OF THE ENGINEER. AT THE CONTRACTOR'S EXPENSE.
- ALL HORIZONTAL CONTROLS ARE BASED ON MARYLAND STATE COORDINATES.
- ALL VERTICAL CONTROLS ARE BASED ON U.S.G.S. DATUM.
- ALL PIPE ELEVATIONS SHOWN ARE INVERT ELEVATIONS.
- CLEAR ALL UTILITIES BY A MINIMUM OF 6". CLEAR ALL POLES BY 2' - 8" MINIMUM OR TUNNEL AS REQUIRED. ANY COST INCURRED TO THE CONTRACTOR FOR TUNNELING OR BRACING AT POLES SHALL BE INCLUDED IN UNIT PRICES BID FOR CONSTRUCTION OF MAIN.
- FOR DETAILS NOT SHOWN ON DRAWINGS USE HOWARD COUNTY STANDARD DETAILS.
- CONTRACTOR SHALL LOCATE EXISTING UTILITIES A MINIMUM OF TWO (2) WEEKS IN ADVANCE OF CONSTRUCTION OPERATION IN THE VICINITY OF PROPOSED UTILITIES AT HIS OWN EXPENSE.
- TREES ARE TO BE PROTECTED FROM DAMAGE TO MAXIMUM EXTENT. TREES LOCATED WITHIN THE CONSTRUCTION STRIP ARE NOT TO BE REMOVED OR DAMAGED BY THE CONTRACTOR.
- CONTRACTOR SHALL REMOVE TREES, STUMPS, AND ROOTS ALONG LINE OF EXCAVATION AS DIRECTED BY ENGINEER. PAYMENT FOR SUCH REMOVAL SHALL BE INCLUDED IN THE UNIT PRICE BID FOR CONSTRUCTION OF THE MAIN.
- PLACE REGULATION "MEN WORKING" AND WARNING SIGNS AS REQUIRED TO COMPLY WITH MARYLAND STATE HIGHWAY ADMINISTRATION MANUAL OF TRAFFIC CONTROL FOR HIGHWAY CONSTRUCTION AND MAINTENANCE OPERATIONS.
- CONTRACTOR SHALL NOTIFY THE FOLLOWING UTILITIES OR AGENCIES AT LEAST FIVE (5) WORKING DAYS BEFORE STARTING WORK SHOWN ON THESE PLANS.
STATE HIGHWAY ADMINISTRATION - 631-5533
BALTIMORE GAS AND ELECTRIC COMPANY - UNDERGROUND ELECTRIC DISTRIBUTION (CUSTOMER SERVICE 685-8123)
ENGINEERING, "DAMAGE CONTROL" - 234-5621
BALTIMORE GAS AND ELECTRIC COMPANY - UNDERGROUND GAS DISTRIBUTION (CUSTOMER SERVICE 685-8123)
"MISS UTILITY" - 1-553-8188
CHESAPEAKE & POTOMAC (CAP) TELEPHONE CO. - 725-9976
AMERICAN TELEPHONE AND TELEGRAPH - CABLE LOCATION DIVISION - 393-3553
COLONIAL PIPELINE COMPANY - 795-1399
BUREAU OF UTILITIES HOWARD COUNTY - 992-2366
- FOR MATERIALS AND CONSTRUCTION METHODS USE HOWARD COUNTY STANDARD SPECIFICATIONS.
- ALL WATER HOUSE CONNECTIONS SHALL BE FOR AN INSIDE METER SETTING.
- THE CONTRACTOR SHALL NOT OPERATE ANY WATER MAIN VALVES ON THE EXISTING SYSTEM.
- WATER MAIN AND WATER HOUSE CONNECTION LINES MUST HAVE A MINIMUM OF ONE FOOT SEPARATION FROM THE SANITARY SEWER AND SEWER HOUSE CONNECTIONS AT CROSSINGS. WATER AND SEWER LINES SHALL HAVE A MINIMUM HORIZONTAL SEPARATION OF 18".
- ALL D.I.P. FITTINGS SHALL BE IN ACCORDANCE WITH AWWA SPECIFICATION C-153 DUCTILE IRON COMPACT FITTINGS, 3-INCH THROUGH 12-INCH FOR WATER AND OTHER LIQUIDS.
- FOR DETAILS NOT SHOWN ON THE DRAWINGS AND FOR MATERIALS AND CONSTRUCTION METHODS, USE HOWARD COUNTY DESIGN 1989 AMENDMENTS VOLUME III STANDARD SPECIFICATIONS AND DETAILS FOR CONSTRUCTION. THE CONTRACTOR SHALL HAVE A COPY OF VOLUME III ON THE JOB.

QUANTITIES				
ITEM	UNIT	ESTIMATED	AS BUILT	MATERIAL SUPPLIER
8" WATER	L.F.	275'	285'	M&C Sales inc / Griffith
6" WATER	L.F.	25' 35"	40'	" " " "
12"x8" T-S 4V	Ea.	1	1 ^{ea}	" " / CLOW
8"-1/16 BEND	Ea.	5	5	
8"x6" REDUCER	Ea.	1	1	
6" V.	Ea.	3	2 ^{ea}	M&C Sales inc / KENNEDY
F. H.	Ea.	2	1 ^{ea}	" " " "
6"x6" TREE	Ea.	1	1	
8" V.	Ea.	2	1	M&C Sales inc / KENNEDY
8"-1/8 BEND	Ea.	2	2	
8" x 6" TEE	Ea.	1	1	
8" x 8" TEE	Ea.	1	1	
8" PLUG & BUTTRESS	Ea.	1	1	
8" WHC	L.F.	9	9	



LOCATION MAP

SCALE: 1" = 600'

WATER CODE E 30
SEWER CODE 5523900

TYPE OF BUILDING	RELIGIOUS FACILITY
NO. OF LOTS	1
NO. OF WATER HOUSE CONNECTIONS	1 (EXISTING)
NO. OF SEWER HOUSE CONNECTIONS	1 (EXISTING)

SEDIMENT CONTROL MEASURES FOR THIS CONTRACT WILL BE IN ACCORDANCE WITH SECT-15 OF THE HOWARD COUNTY DESIGN MANUAL AND STANDARD SPECIFICATIONS FOR SOIL EROSION AND SEDIMENT CONTROL IN DEVELOPING AREAS (SDP 90-76)

SDP 90-76
PD 15 F81

REVIEWED FOR HOWARD COUNTY SOIL CONSERVATION DISTRICT AND MEETS TECHNICAL REQUIREMENTS.

[Signature] 2/7/90
U.S. Soil Conservation Service

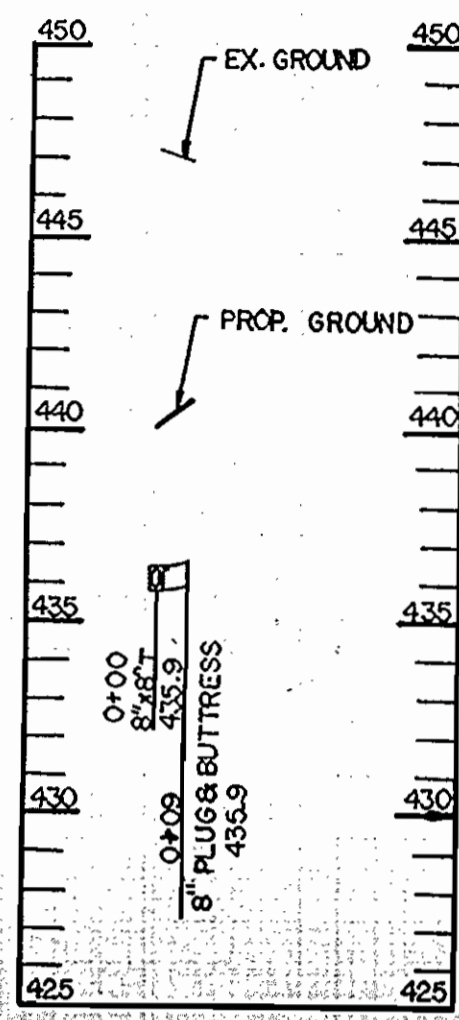
THIS DEVELOPMENT IS APPROVED FOR EROSION AND SEDIMENT CONTROL BY THE HOWARD SOIL CONSERVATION DISTRICT

[Signature] 2/7/90
Howard Soil Conservation District

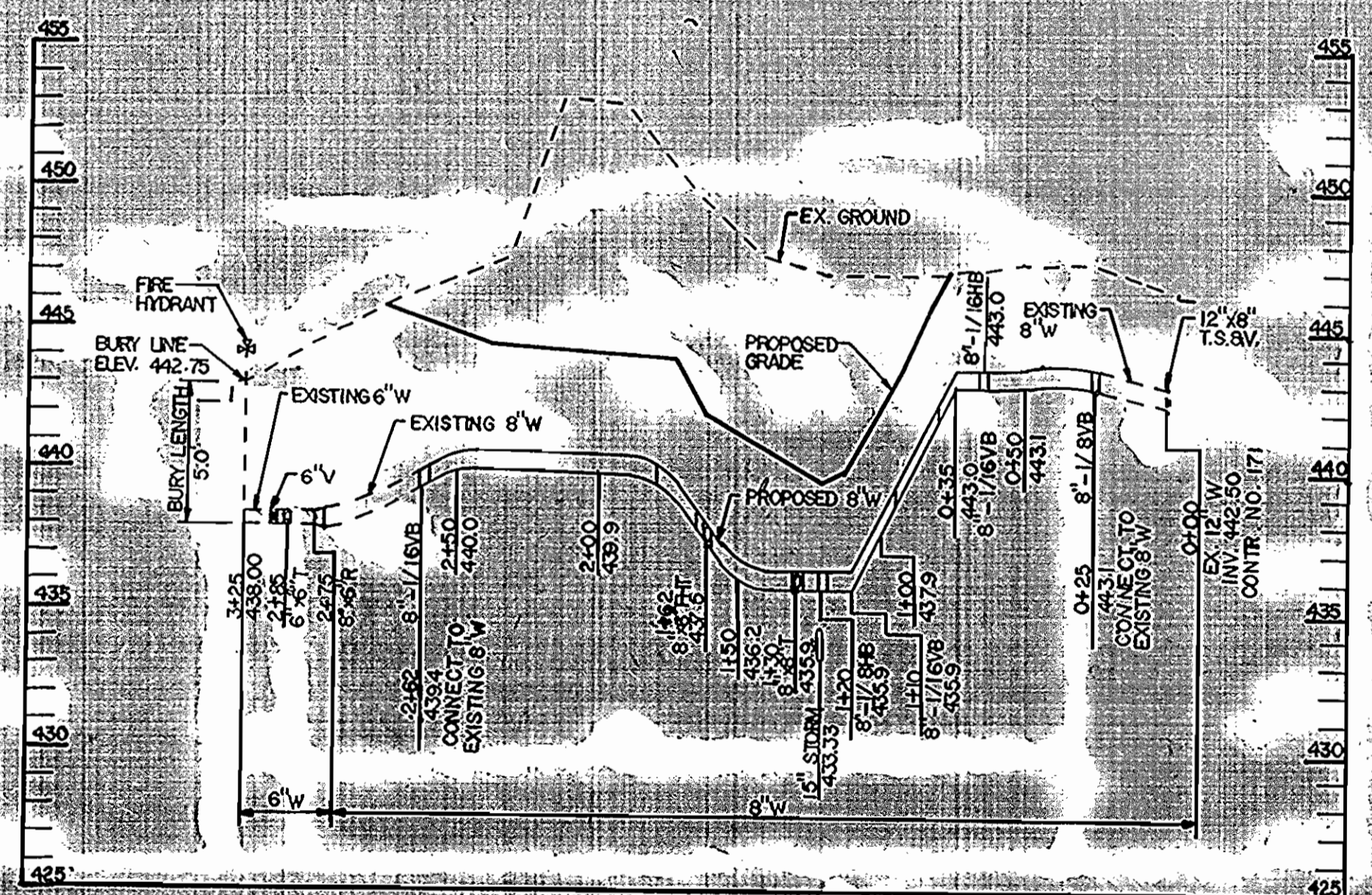


CONTRACT 44-3016

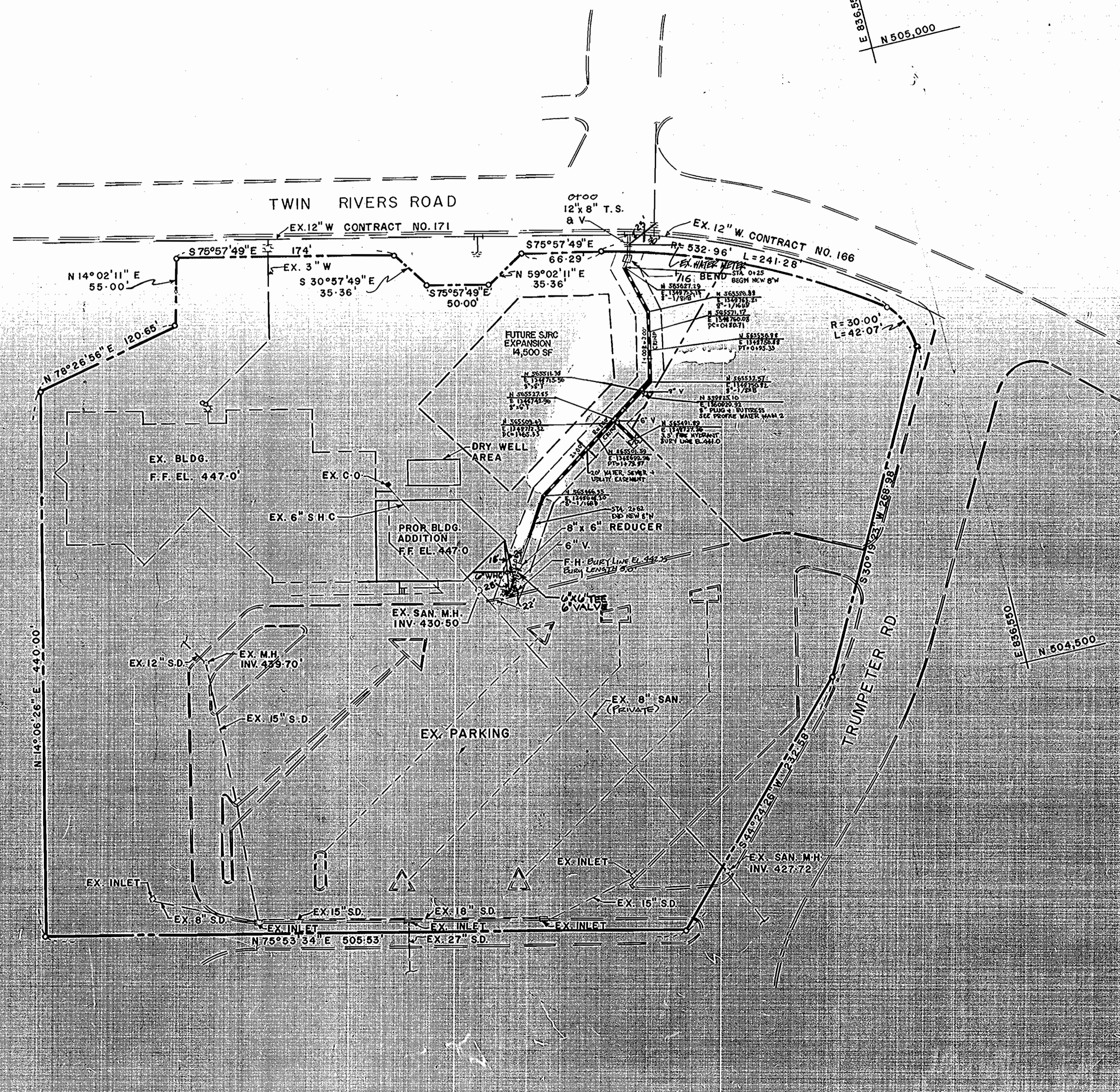
DEPARTMENT OF PUBLIC WORKS HOWARD COUNTY, MARYLAND Director of Public Works: <i>[Signature]</i> 2/9/90 Chief, Bureau of Engineering: <i>[Signature]</i> 2/9/90 Chief, Bureau of Utilities: <i>[Signature]</i> 2/9/90		ENGINEERING TECHNOLOGIES ASSOCIATES, INC. ENGINEERS, PLANNERS, SURVEYORS 3458 ELLICOTT CENTER DRIVE SUITE 101 ELLICOTT CITY MD. 20443 (301) 461-9920		DES: EMR 1 REV. QUANTITY LIST & LOC. MAP IN ACCORDANCE W/ PLAN 9/28/87 DRN: CHK: DATE:		TITLE SHEET WATERMANS		WILDE LAKE INTERFAITH CENTER BUILDING ADDITION CONTRACT NO 44-3016-D		SCALE AS SHOWN SHEET 1 OF 2	
5th ELECTION DISTRICT		HOWARD COUNTY, MD.		600' SCALE MAP NO. 30 BLOCK NO.		WATER As-Built 12-26-90					



WATER PROFILE 2
SCALE: 1"=50' HORIZONTAL
1"=5' VERTICAL



PROFILE WATER MAIN
SCALE: 1"=50' Horizontal
1"=5' Vertical

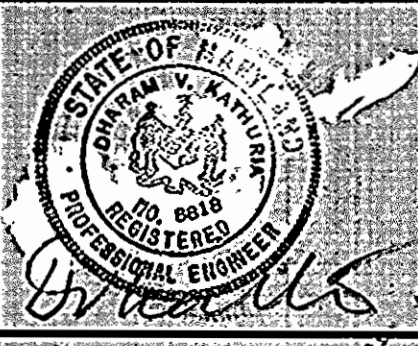


PLAN
SCALE: 1"=50'



DEPARTMENT OF PUBLIC WORKS
HOWARD COUNTY, MARYLAND
Director of Public Works: [Signature]
Date: 2/1/90

ENGINEERING TECHNOLOGIES ASSOCIATES, INC.
ENGINEERS, PLANNERS, SURVEYORS
3408 ELLICOTT CENTER DRIVE, SUITE 101
ELLICOTT CITY, MD. 21043
(301) 481-3920



DES:	EMR	1	REVISE PLAN & PROFILE TO RELOCATE EXISTING 6" PUBLIC WATER LINE AND ADD A WATER LATERAL AND FIRE HYDRANT.	3/29/07
DRN:				
CHK:				
DATE:	BY	NO.	REVISION	DATE

PLAN & PROFILE WATERMAIN
600' SCALE MAP NO. 30 BLOCK NO.

WILDE LAKE INTERFAITH CENTER
BUILDING ADDITION
Contract No. 44-3016-D
5TH ELECTION DISTRICT
HOWARD COUNTY, MD.

SCALE AS SHOWN
SHEET 2 OF 2