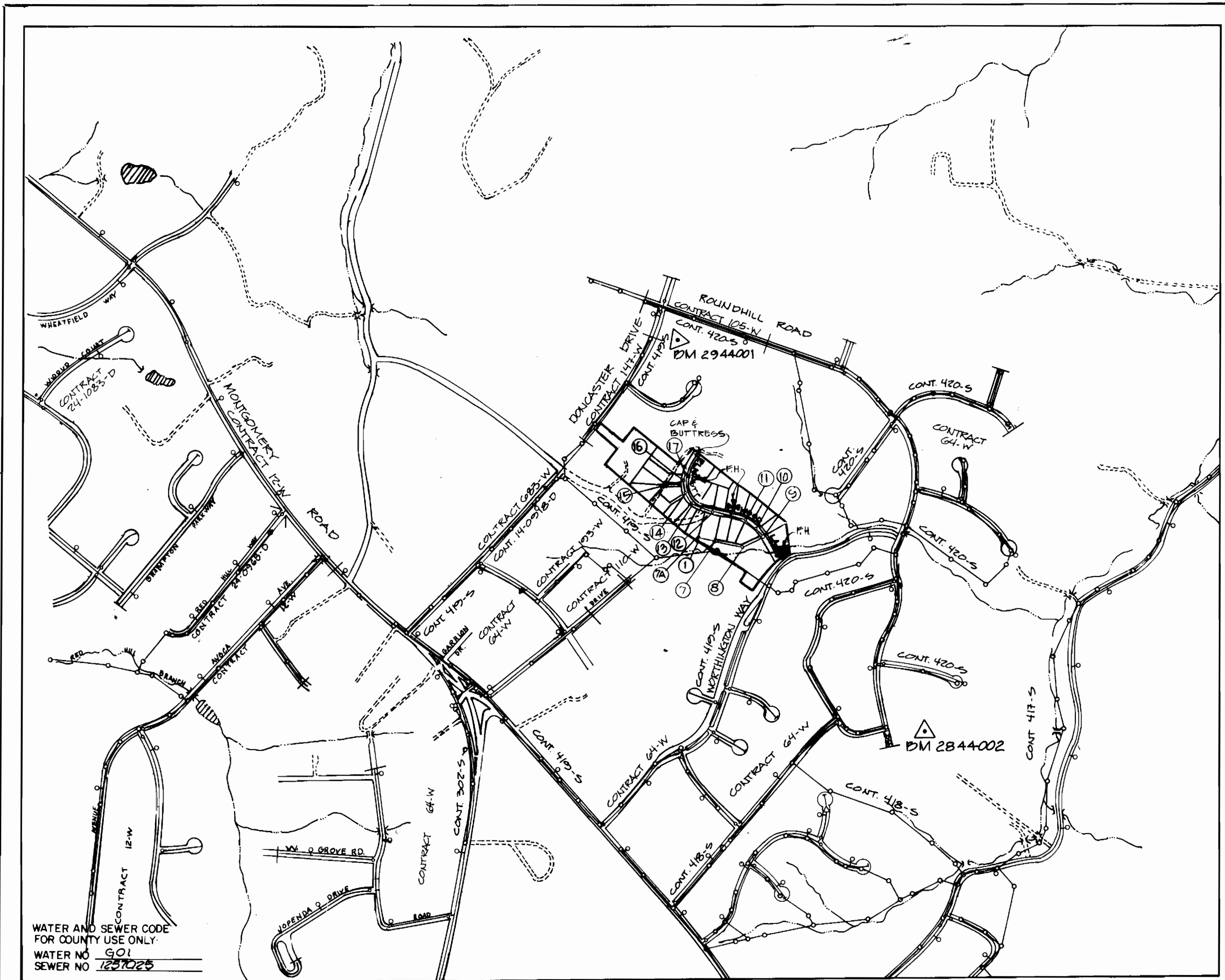


QUANTITIES			
ITEM	EST'D	AS BUILT	SUPPLIER
8" WATER	1325 L.F.	1240 L.F.	GRIFP INC.
6" WATER	30 L.F.	31 L.F.	GRIFP INC.
3/4" W.H.C.	447 L.F.	500 L.F.	AMERICAN PIPE
1" W.H.C.	74 L.F.	18 L.F.	AMERICAN PIPE
FIRE HYDRANTS	7	2	REHBERG
8" SEWER	1675 L.F.	1427 L.F.	SILCO
8" SEWER (D.I.P.)	116 L.F.	115 L.F.	GRIFP INC.
MANHOLES	18	17	ATLANTIC
6" SEWER	0	-	-
8" VALVES	1	1	GRIFP INC.
6" VALVES (EXCLUDING F.H.)	0	-	-
6" F.H. VALVES	7	2	REHBERG
4" S.H.C.	534 L.F.	515 L.F.	SILCO
24" STEEL CASING	30 L.F.	30 L.F.	SILCO



GENERAL NOTES

- APPROXIMATE LOCATION OF EXISTING MAINS ARE SHOWN. THE CONTRACTOR SHALL TAKE ALL NECESSARY PRECAUTIONS TO PROTECT EXISTING MAINS AND SERVICES AND MAINTAIN UNINTERRUPTED SUPPLY. ANY DAMAGE INCURRED SHALL BE REPAIRED IMMEDIATELY TO THE SATISFACTION OF THE ENGINEER, AT THE CONTRACTOR'S EXPENSE.
- ALL HORIZONTAL CONTROLS ARE BASED ON MARYLAND STATE COORDINATES.
- ALL VERTICAL CONTROLS ARE BASED ON U.S.G.S DATUM.
- ALL PIPE ELEVATIONS SHOWN ARE INVERT ELEVATIONS.
- CLEAR ALL UTILITIES BY A MINIMUM OF 6" CLEAR ALL POLES BY 2'-0" MINIMUM OF TUNNEL AS REQUIRED. ANY COST INCURRED TO THE CONTRACTOR FOR TUNNELING OR BRACING AT POLES SHALL BE INCLUDED IN UNIT PRICES BID FOR CONSTRUCTION OF THE MAIN.
- FOR DETAILS NOT SHOWN ON THE DRAWINGS USE HOWARD COUNTY DESIGN MANUAL VOLUME II 1989 AMENDMENTS.
- FOR MATERIALS AND CONSTRUCTION METHODS USE HOWARD COUNTY STANDARD SPECIFICATIONS.
- CONTRACTOR SHALL LOCATE EXISTING UTILITIES A MINIMUM OF TWO (2) WEEKS IN ADVANCE OF CONSTRUCTION OPERATIONS IN THE VICINITY OF PROPOSED UTILITIES AT HIS OWN EXPENSE.
- CONTRACTOR SHALL NOTIFY THE FOLLOWING UTILITIES OR AGENCIES AT LEAST FIVE (5) WORKING DAYS BEFORE STARTING WORK SHOWN ON THESE PLANS.
 - STATE HIGHWAY ADMINISTRATION 531-5533
 - BALTIMORE GAS AND ELECTRIC COMPANY - UNDERGROUND ELECTRIC DISTRIBUTION CUSTOMER SERVICE 685-0123
 - BALTIMORE GAS AND ELECTRIC COMPANY - UNDERGROUND GAS DISTRIBUTION CUSTOMER SERVICE 685-0123
 - ENGINEERING - "DAMAGE CONTROL" 234-5611
 - "MISS UTILITY" 1-559-0100
 - CHESAPEAKE & POTOMAC (C&P) TELEPHONE COMPANY 725-9976
 - AMERICAN TELEPHONE AND TELEGRAPH - CABLE LOCATION DIVISION 393-3533
 - COLONIAL PIPELINE COMPANY 795-1390
 - BUREAU OF UTILITIES HOWARD COUNTY 992-2366
- TREES ARE TO BE PROTECTED FROM DAMAGE TO MAXIMUM EXTENT. TREES LOCATED WITHIN THE CONSTRUCTION STRIP ARE NOT TO BE REMOVED OR DAMAGED BY THE CONTRACTOR.
- CONTRACTOR SHALL REMOVE TREES, STUMPS, AND ROOTS ALONG LINE OF EXCAVATION AS DIRECTED BY THE ENGINEER. PAYMENT FOR SUCH REMOVAL SHALL BE INCLUDED IN THE UNIT PRICE BID FOR CONSTRUCTION OF THE MAIN.
- PLACE REGULATION "MEN WORKING" AND WARNING SIGNS AS REQUIRED TO COMPLY WITH MARYLAND STATE HIGHWAY ADMINISTRATION MANUAL OF TRAFFIC CONTROL FOR HIGHWAY CONSTRUCTION AND MAINTENANCE.
- ALL WATER MAINS TO BE CLASS 90 D.I.P. UNLESS OTHERWISE NOTED.
- TOP OF ALL WATER MAINS TO HAVE A MINIMUM OF 3'-1/2" COVER UNLESS OTHERWISE NOTED.
- VALVES ADJACENT TO TEES SHALL BE STRAPPED TO TEES.
- BLOCK ALL FITTINGS WITH CONCRETE.
- BURY ALL LINE ELEVATIONS ON FIRE HYDRANTS SHALL BE SET TO THE ELEVATIONS SHOWN ON THE DRAWINGS. ALL FIRE HYDRANTS SHALL BE STRAPPED AND BUTTRESSED WITH CONCRETE IN ACCORDANCE WITH STANDARD DETAILS. SOIL AROUND THE FIRE HYDRANT TO BE COMPACTED IN ACCORDANCE WITH SECTIONS 1000 AND 1005 OF THE STANDARD SPECIFICATIONS.
- ALL WATER HOUSE CONNECTIONS SHALL BE FOR INSIDE METER SETTING.
- THE CONTRACTOR SHALL NOT OPERATE ANY WATER MAIN VALVES ON THE EXISTING SYSTEM.
- ALL SEWER MAINS SHALL BE C.S.P.X., F.C.S.P., V.C.P.X. OR PVC UNLESS OTHERWISE NOTED.
- THE CONTRACTOR SHALL PROVIDE A JOINT IN ALL SEWER MAINS WITH 2" OF EXTERIOR MANHOLE WALL.
- ALL MANHOLES SHALL BE 4'-0" INSIDE DIAMETER, UNLESS OTHERWISE NOTED.
- MANHOLES SHOWN WITH 12" AND 16" WALLS ARE BRICK MANHOLES ONLY.
- MANHOLES DESIGNATED W.T. IN PLAN AND PROFILE SHALL HAVE WATER TIGHT FRAME AND COVERS, STANDARD DETAIL G 5 52 WHERE WATER TIGHT MANHOLE FRAME AND COVERS SET TOP OF FRAME 1'-6" ABOVE FINISHED GRADE, STANDARD DETAIL G 5 4.
- LOTS 18 & 19 ALONG WITH LOTS 14 & 15 MUST HAVE ONE-INCH WATER HOUSE CONNECTION WITH 7/4" INSIDE WATER SETTINGS.

HOWARD COUNTY MONUMENTS

- DM 2944001 - CONCRETE MONUMENT @ SURFACE 6' EAST OF DONCASTER DRIVE 15' NORTH OF DRIVE TO #4605.
- DM 2844002 - CONCRETE MONUMENT @ SURFACE 10' NORTH-WEST OF TWIN 12" APPLE TREES 70' SOUTH OF GRAVEL DRIVE ACROSS POWERLINE FROM INTERSECTION OF ROUND HILL RD & ROLLING TOP RD.

ELLICOTT WOODS

CONTRACT NO. 14-3014-D

WATER AND SEWER MAIN EXTENSIONS

HOWARD COUNTY, MARYLAND

DEPARTMENT OF PUBLIC WORKS

SEDIMENT CONTROL MEASURES FOR THIS CONTRACT WILL BE IMPLEMENTED IN ACCORDANCE WITH SECTION 219 OF THE HOWARD COUNTY DESIGN MANUAL AND STANDARDS AND SPECIFICATIONS FOR SOIL EROSION AND SEDIMENT CONTROL IN DEVELOPING AREAS AND ALSO AS SHOWN ON THE GRADING AND SEDIMENT CONTROL PLAN P-90-88

THIS DEVELOPMENT PLAN IS APPROVED FOR EROSION AND SEDIMENT CONTROL BY HOWARD SOIL CONSERVATION DISTRICT

REVIEW FOR HOWARD COUNTY SOIL CONSERVATION DISTRICT AND MEETS TECHNICAL REQUIREMENTS
James M. Selva 8/19/90
 U.S. SOIL CONSERVATION SERVICE DATE

APPROVED:

 HOWARD SOIL CONSERVATION DISTRICT DATE

DEPARTMENT OF PUBLIC WORKS
 HOWARD COUNTY, MARYLAND

Donald J. Ryan 8/13/90
 DIRECTOR OF PUBLIC WORKS (Acting) DATE

Robert M. Benyon 8-7-90
 CHIEF, BUREAU OF UTILITIES DATE

John P. Ryan 8-13-90
 CHIEF, BUREAU OF ENGINEERING DATE

John P. Ryan 8/13/90
 CHIEF, LAND DEVELOPMENT DIVISION DATE

DEWBERRY & DAVIS
 ARCHITECTS ENGINEERS PLANNERS SURVEYORS
 200 HARRY S. TRUMAN PARKWAY,
 ANNAPOLIS, MD 21401
 (301) 261-8707



DES. W.E.O. WED AS PER STATE HEALTH DEPARTMENT 11/1/90

DRN: DJD

CHK:

DATE: Nov 1989

TITLE SHEET

BY NO. DATE

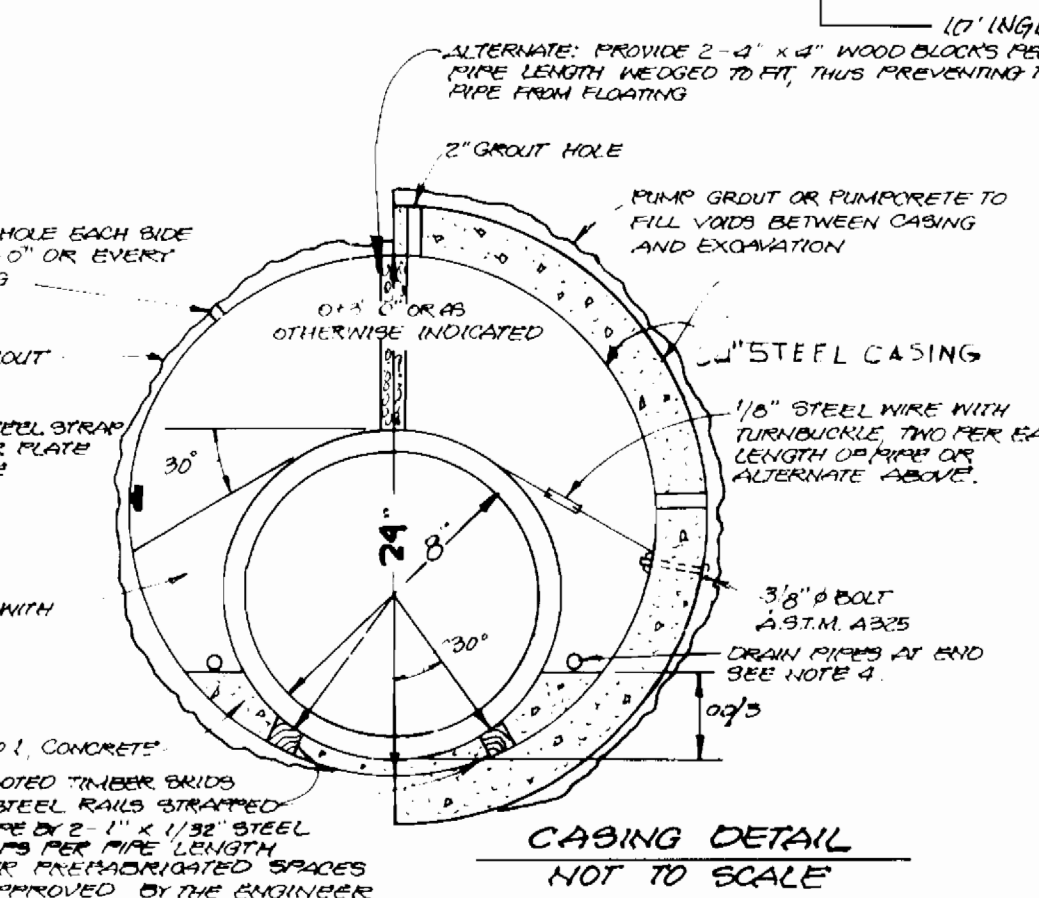
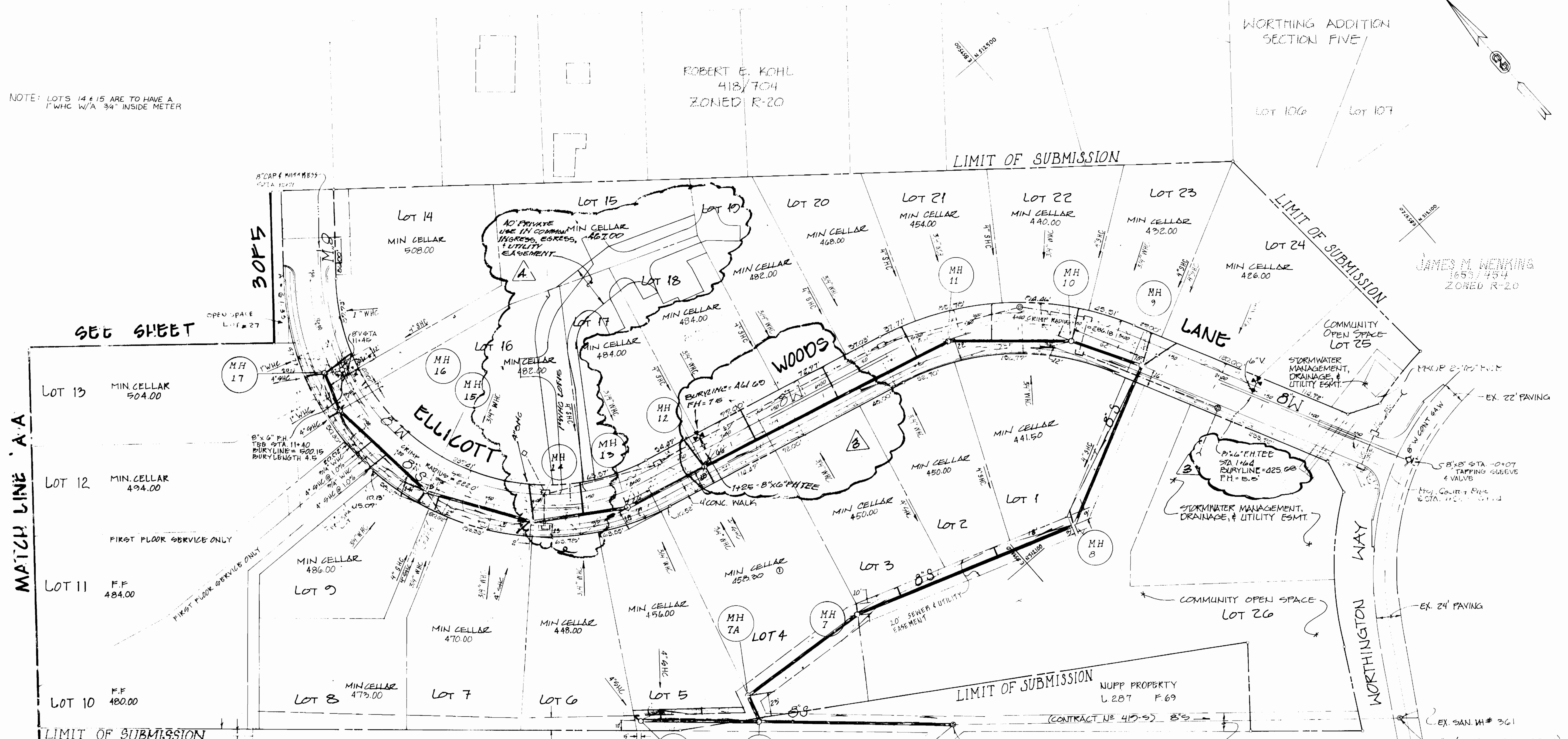
EDUC SCALE MAP NO. BLOCK NO.

ELLICOTT WOODS
 CONTRACT NO. 14-3014-D
 TAX MAP BLOCK PARCEL
 1ST ELECTION DISTRICT
 HOWARD COUNTY, MARYLAND

SCALE AS SHOWN

SHEET 1 OF 3

NOTE: LOTS 14 & 15 ARE TO HAVE A 1" W/C W/A 3/4" INSIDE METER

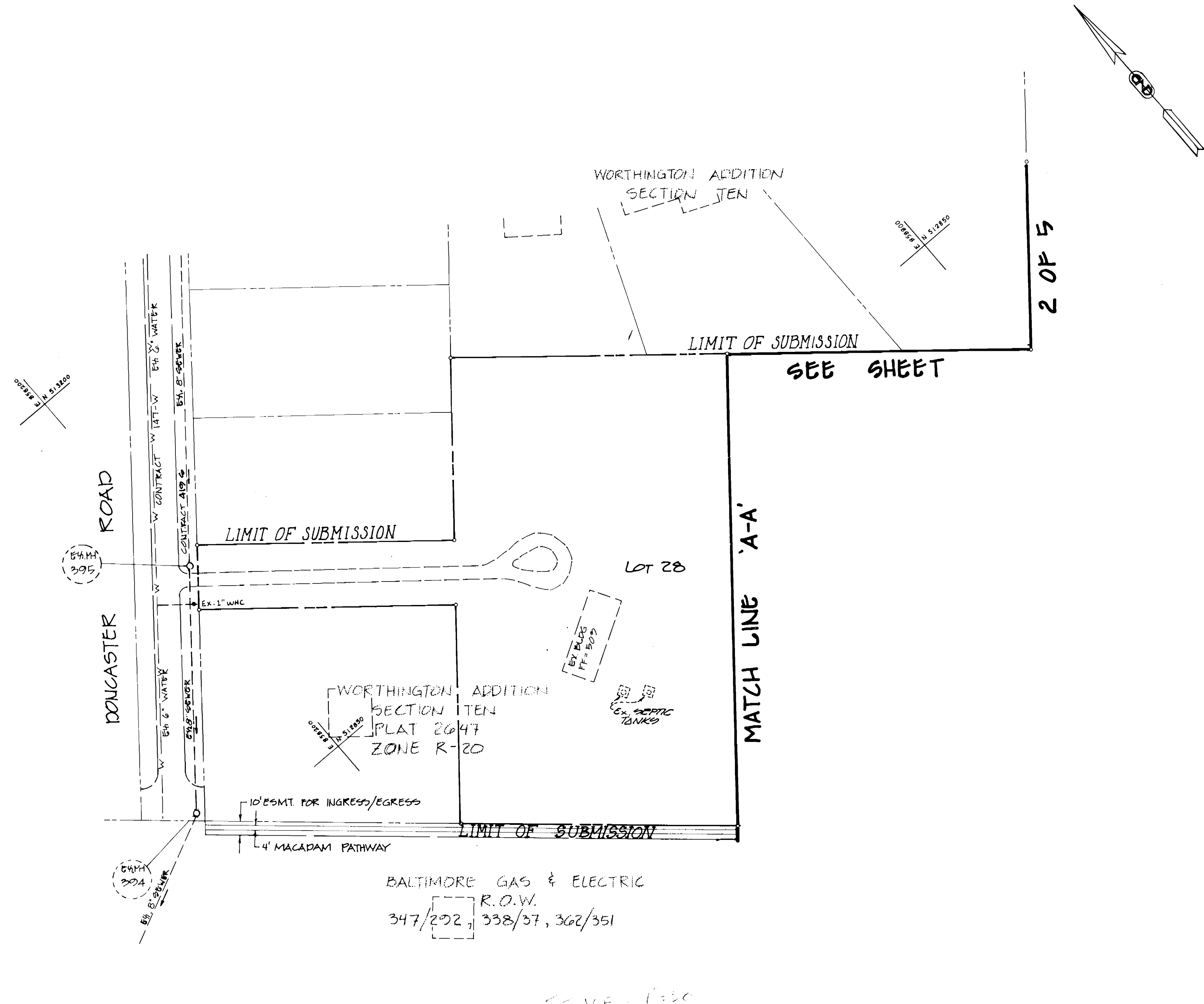


- GENERAL NOTES**
1. STEEL CASING PIPE MINIMUM WALL THICKNESS 3/8" CLASS OF R.C.P. AND STEEL LINER PLATE REQUIREMENTS AS SHOWN ON THE DRAWING.
 2. PROVIDE SUPPORTS TO PREVENT CARRIER PIPE FLOATION DURING PLACEMENT OF CONCRETE OR GROUT SUPPORTS FOR PVC PIPE SHALL NOT BE SPACED MORE THAN 6'-0".

PLAN SCALE 1"=50'

DEPARTMENT OF PUBLIC WORKS HOWARD COUNTY, MARYLAND 8/13/20 8-7-90 CHIEF, BUREAU OF UTILITIES		JEWERRY & DAVIS ARCHITECTS ENGINEERS PLANNERS SURVEYORS 200 Harry S. Truman Parkway, Annapolis, MD 21401 (301) 841-6811 8/20/20		AS PER REDLINE COMMENTS 10/24/20 AS PER DEPT OF ENVIRONMENT 11/17/20 Relocate FH + Revise Eum/line 8/1/20 Relocate 4"HC + SHC LOT 15 8/1/20		PLAN WATER AND SEWER MAIN		ELLICOTT WOODS CONTRACT NO. 14-3014-D 1ST ELECTION DISTRICT HOWARD COUNTY, MARYLAND		SCALE AS SHOWN SHEET 2 OF 5
DATE: 8/13/20		DATE: 8/20/20		DATE: 10/24/20		DATE: 11/17/20		DATE: 8/1/20		

AS-BUILT



PLAN
SCALE 1"=50'

DEPARTMENT OF PUBLIC WORKS
HOWARD COUNTY, MARYLAND

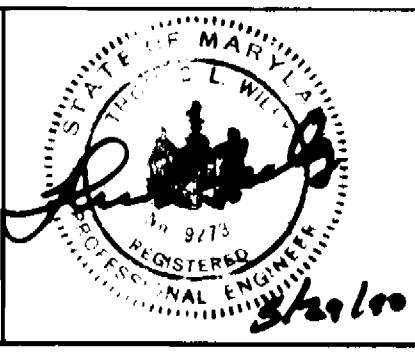
Robert S. Brown 8/13/90
DIRECTOR OF PUBLIC WORKS (Acting) DATE

Robert S. Brown 8-7-90
CHIEF, BUREAU OF UTILITIES DATE

Robert S. Brown
CHIEF, BUREAU OF ENGINEERING DATE

Robert S. Brown
CHIEF, LAND DEVELOPMENT DIVISION DATE

DEWBERRY & DAVIS
ARCHITECTS ENGINEERS PLANNERS SURVEYORS
200 Harry S. Truman Parkway, Annapolis, MD 21401
(301) 841-6811

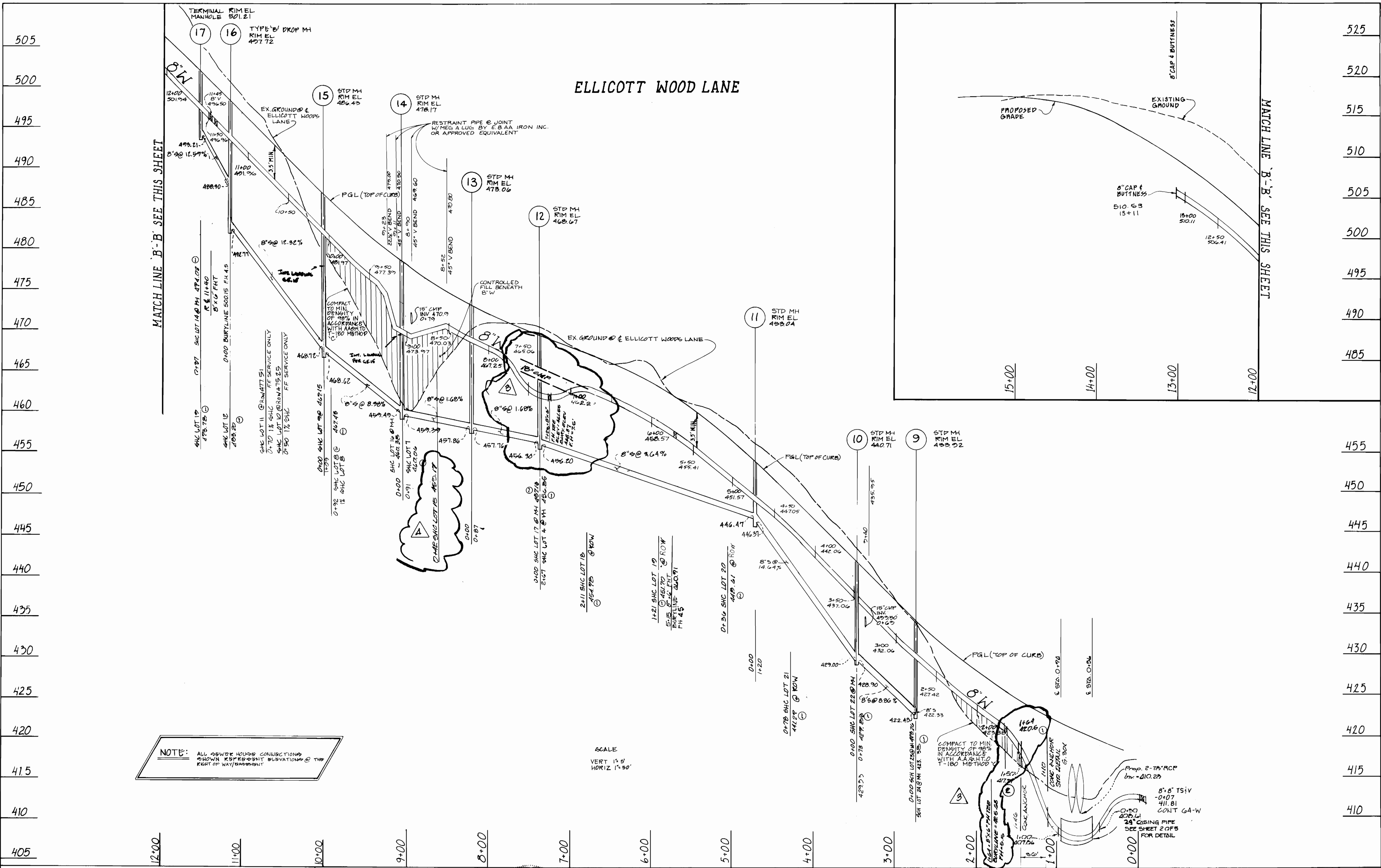


DES: WED					
DRN: WED					
CHK:					
DATE: OCT 1989	BY NO.	REVISION	DATE	600' SCALE MAP NO. 21	BLOCK NO. 8

PLAN
WATER AND SEWER MAIN

ELLICOTT WOODS
CONTRACT NO. 14-3014-D
1ST ELECTION DISTRICT
HOWARD COUNTY, MARYLAND

SCALE AS SHOWN
SHEET 3 OF 5



DEPARTMENT OF PUBLIC WORKS
 HOWARD COUNTY, MARYLAND
 8/13/90
 DIRECTOR OF PUBLIC WORKS
 8-7-90
 CHIEF, BUREAU OF UTILITIES

DEWBERRY & DAVIS
 200 HARRY S. TRUMAN PARKWAY
 ANNAPOLIS, MD - 21401
 PHONE (301) 261-8707



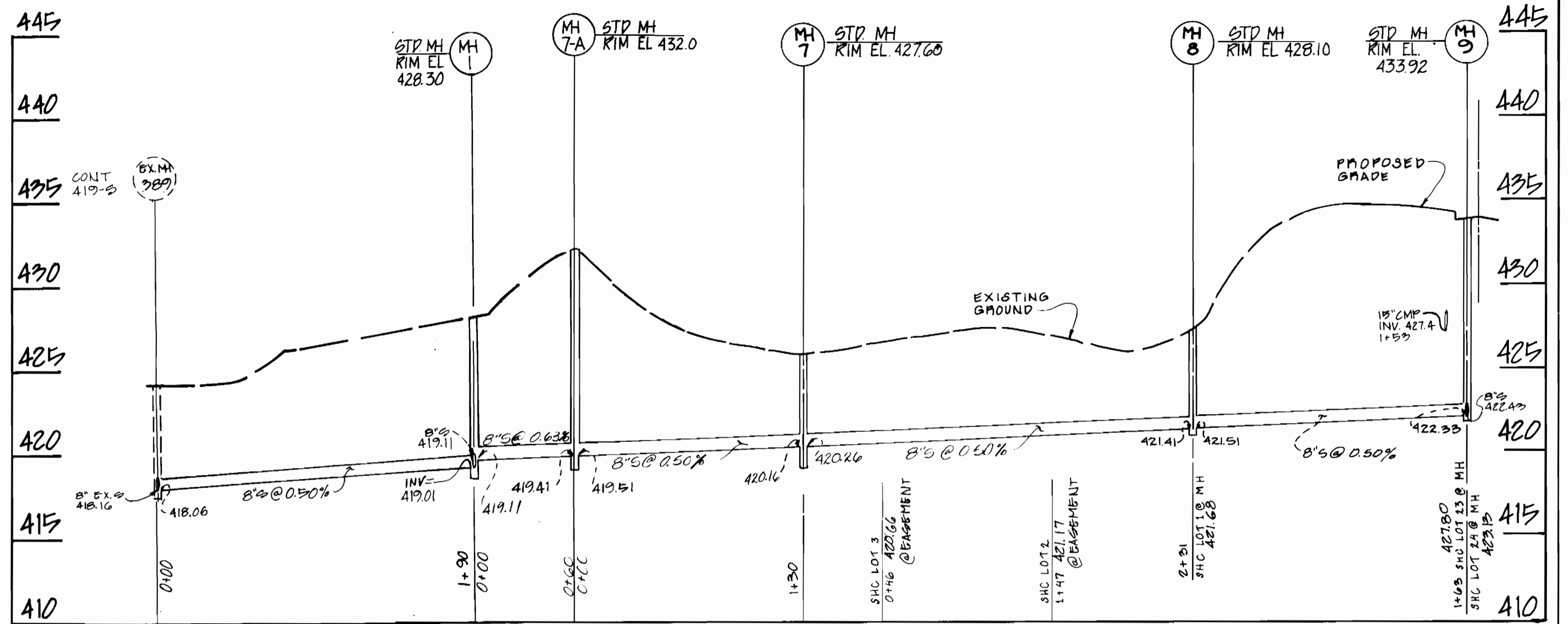
DES: W.E.O.	WED	15 PER REDLINE COMMENTS	10/24/90	11/1/90
DRN: W.E.O.	WED	AS PER DEPT OF ENVIRONMENT		11/1/90
CHK:	ERS	Relocate F.H., Revise Buryline		5/03
		Relocate SHC LOT 15		8/03
DATE: OCT 89	BY: NO.	REVISION	DATE	600' SCALE MAP NO. 21 BLOCK NO. 8

PROFILE
 WATER & SEWER

ELLICOTT WOODS
 CONTRACT No. 14-2014-D
 1st ELECTION DISTRICT
 HOWARD COUNTY, MD.

SCALE AS SHOWN
 SHEET 4 OF 5

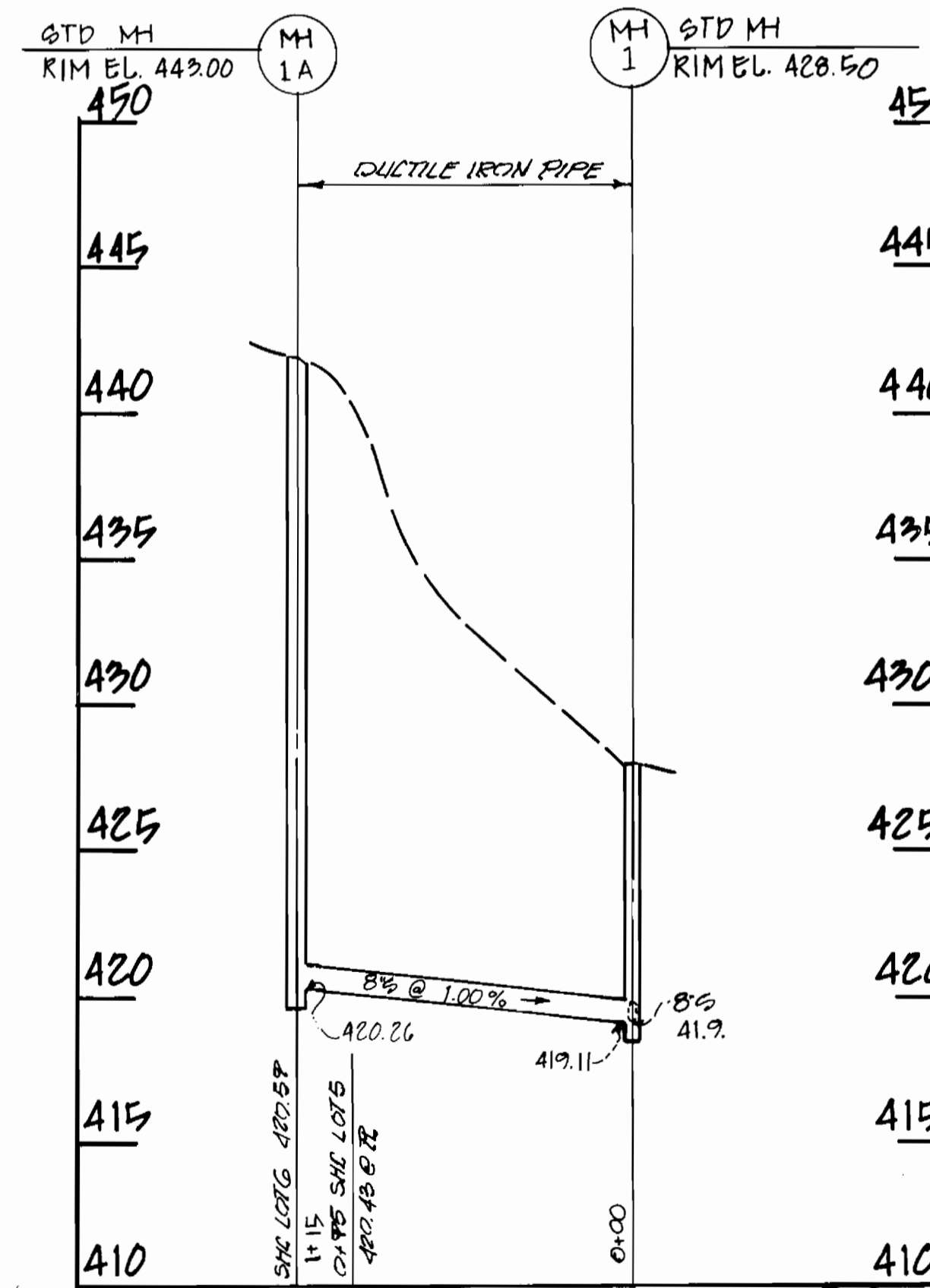
BRUNING 44 132 691 50



PROFILE
SCALE: VERT. 1"=5'
HOKZ 1"=50'

TYPE 'X' DROP SEWER HOUSE CONNECTIONS		
LOT #	ELEV @ MAIN	ELEV @ MAIN
18	467.00	454.92
19	461.30	451.04
20	454.80	447.75
21	448.10	435.41

NOTE: ALL SEWER HOUSE CONNECTIONS SHOULD REPRESENT ELEVATIONS @ THE RIGHT OF WAY/BASEMENTS.



PROFILE
SCALE: VERT. 1"=5'
HOKZ 1"=30'

DEPARTMENT OF PUBLIC WORKS
HOWARD COUNTY, MARYLAND

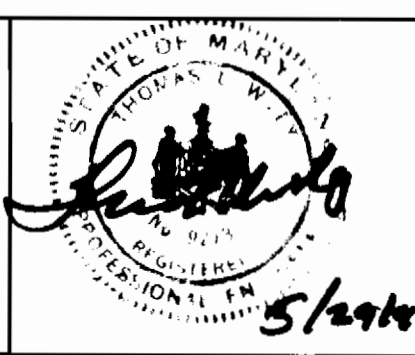
Paul D. Gorman 5/13/90
DIRECTOR OF PUBLIC WORKS DATE

Richard S. Senior 8-7-90
CHIEF, BUREAU OF UTILITIES DATE

James D. Riley 8-13-90
CHIEF, BUREAU OF ENGINEERING DATE

Chang
LAND DEVELOPMENT DIVISION OFFICE

DEWBERRY & DAVIS
200 HARRY S. TRUMAN PARKWAY
ANNAPOLIS, MD 21401
PHONE (301) 261-0707



DES: W.E.O.	W.E.O.	1	AS PER REDLINE COMMENTS 10/24/90	11/2/90
DRN: W.E.O.				
CHK:				
DATE: Oct 89	BY: NO.	REVISION	DATE	

PROFILE
WATER & SEWER

600' SCALE MAP NO. 31 BLOCK NO. 5

ELLICOTT WOODS
CONTRACT No. 14-3014-D
1st ELECTION DISTRICT
HOWARD COUNTY, MD

SCALE AS SHOWN
SHEET 5 OF 5

BRUNING 44 132 691 50