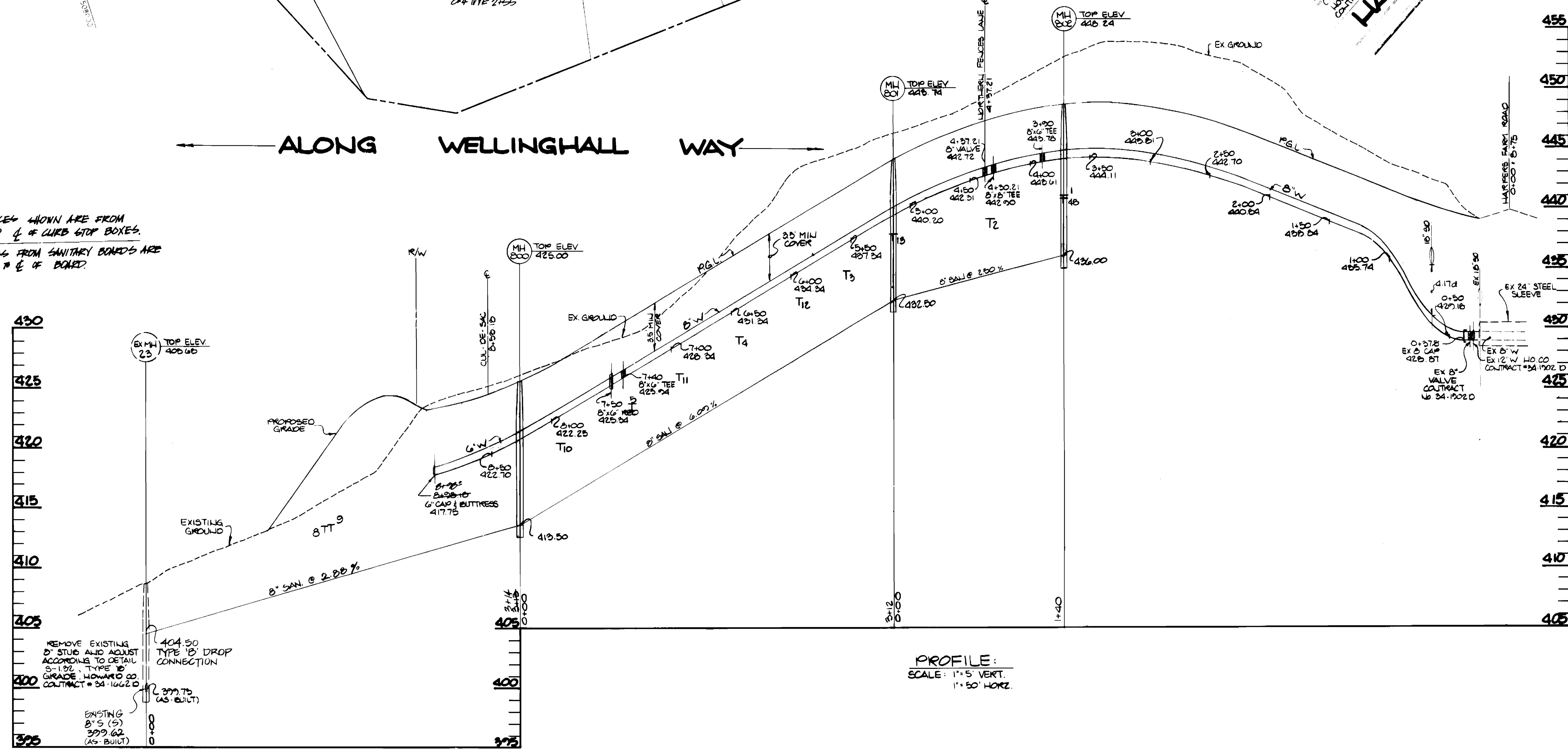


PLAN SCALE: 1"=50'

ALONG WELLINGHALL WAY

NOTE: - DISTANCES SHOWN ARE FROM AND TO $\frac{1}{2}$ OF CURB TOP BOXES.
 - DISTANCES FROM SANITARY BOARDS ARE FROM $\frac{1}{2}$ OF BOARD.



PROFILE SCALE: 1"=5 VERT. 1"=50 HORIZ.

DEPARTMENT OF PUBLIC WORKS
 HOWARD COUNTY, MARYLAND

KIDDE CONSULTANTS, INC.
 ENGINEERS SURVEYORS PLANNERS
 1020 CROMWELL BRIDGE ROAD
 TOWSON, MARYLAND 21204
 (301) 321-5500

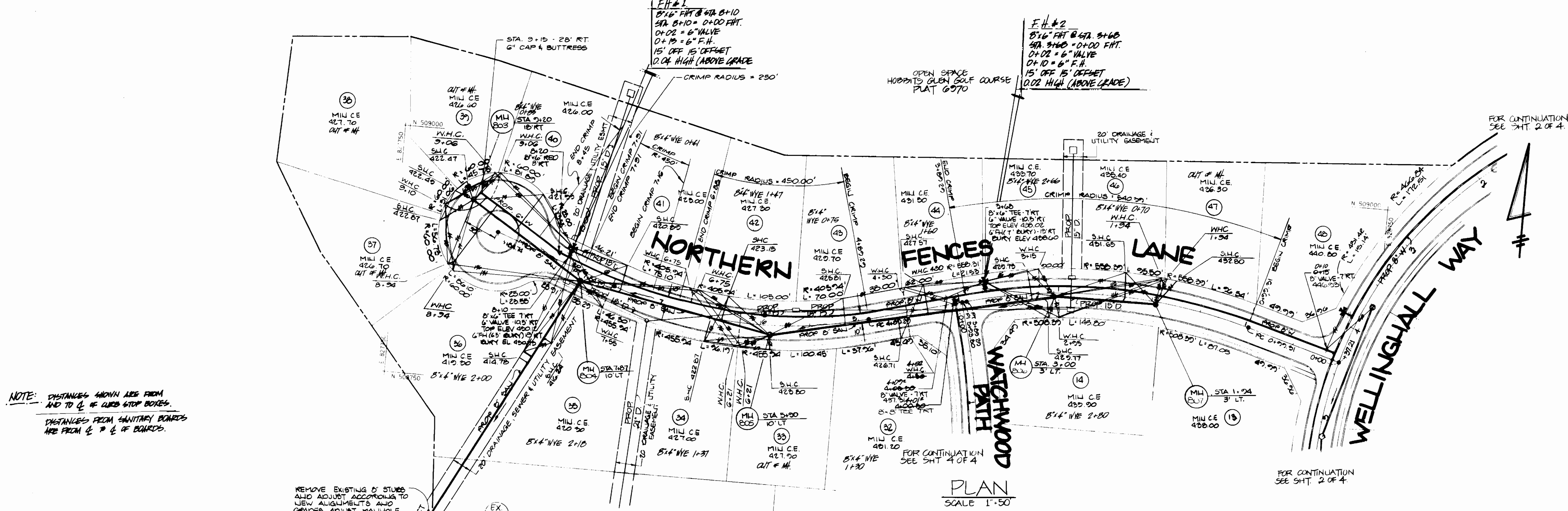
PLAN AND PROFILES OF
 WATER AND SEWER MAINS

COLUMBIA ...
 VILLAGE OF HARPERS CHOICE
 SECTION 7 AREA 5
 ELECTION DISTRICT NO.
 CONTRACT NO. 34-3009-D

SCALE
 1"=50'

SHEET
 2 OF 4

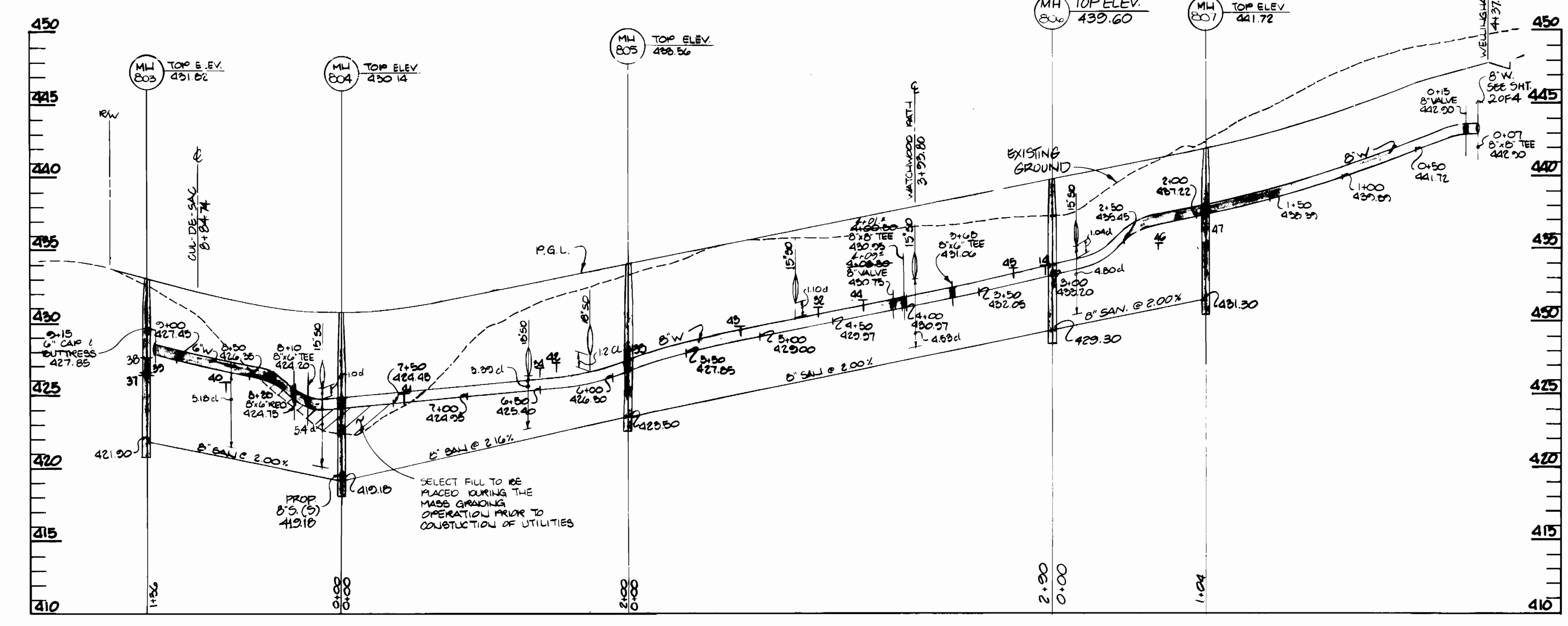
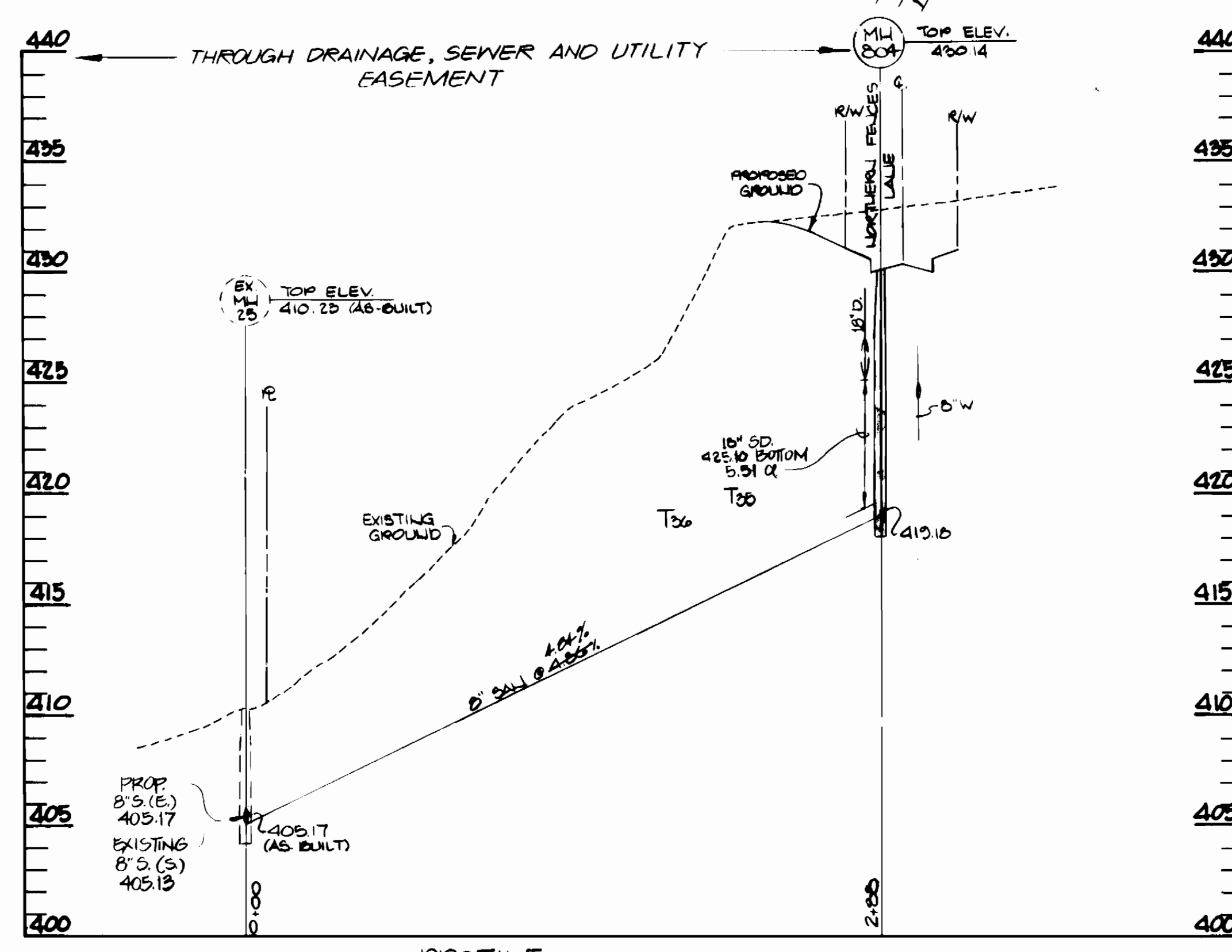
WATER & SEWER - 'AS BUILT' 1/10/90 AS-BUILT

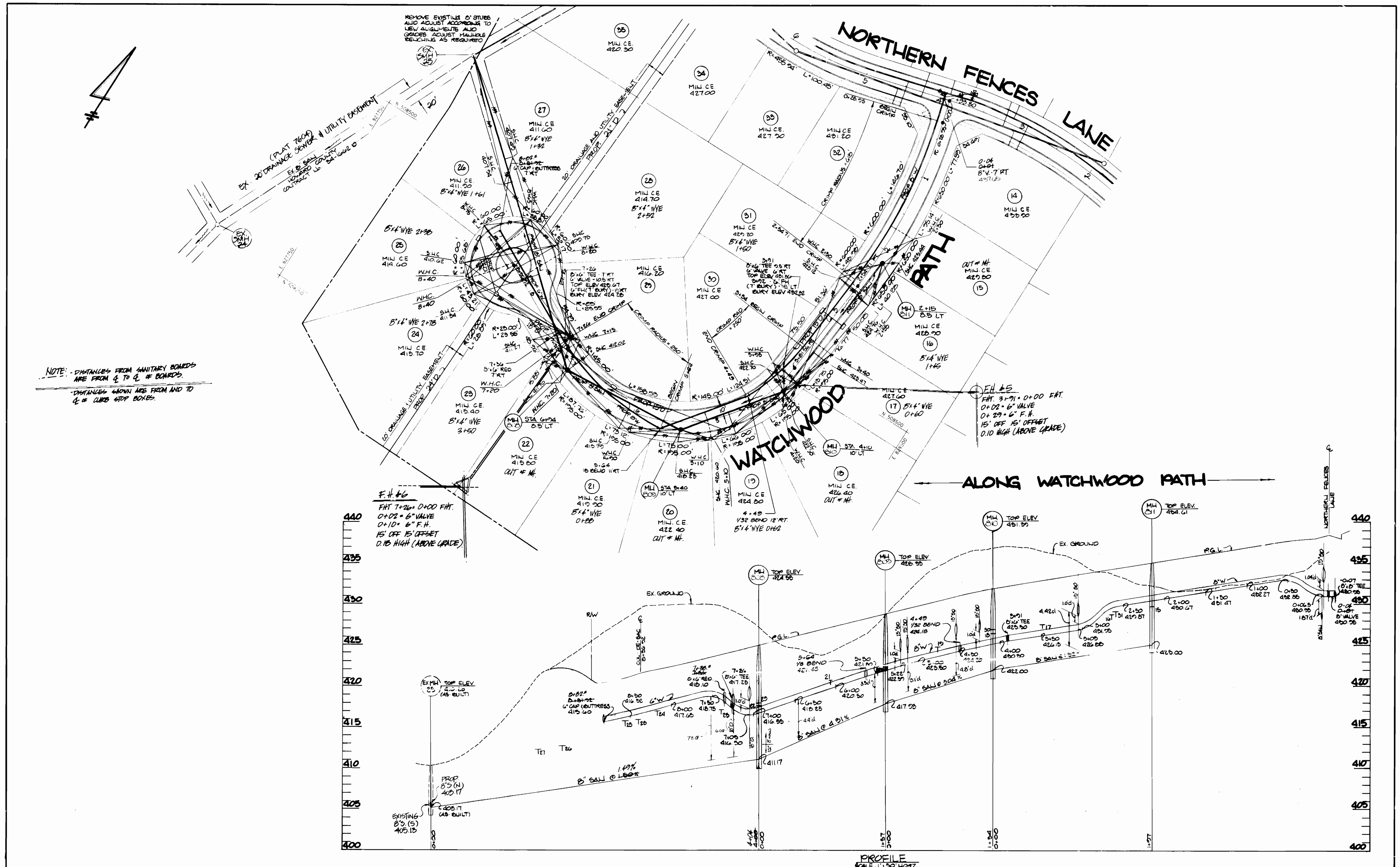


NOTE: DISTANCES SHOWN ARE FROM AND TO C. OF CURB STOP BOXES.
DISTANCES FROM SANITARY BUNDLES ARE FROM C. OF BUNDLES.

REMOVE EXISTING 8" STUBS AND ADJUST ACCORDING TO NEW ALIGNMENTS AND GRADES. ADJUST MANHOLE BECHLING AS REQUIRED.
EX 20" DRAINAGE, SEWER & UTILITY EASEMENT PLAT 7604.

ALONG NORTHERN FENCES LANE





NOTE: DISTANCES FROM SANITARY BOARDS ARE FROM 4 TO 4 OF BOARDS.
DISTANCES SHOWN ARE FROM AND TO 4 OF CURB STOP BOXES.

F.H. #6
FHT 7+26= 0+00 FHT.
0+02 = 6" VALVE
0+10 = 6" F.H.
15' OFF 15' OFFSET
0.10 HIGH (ABOVE GRADE)

F.H. #5
FHT 3+91 = 0+00 FHT.
0+02 = 6" VALVE
0+29 = 6" F.H.
15' OFF 15' OFFSET
0.10 HIGH (ABOVE GRADE)

PROFILE
SCALE 1" = 20' HORIZ
1" = 5' VERT

DEPARTMENT OF PUBLIC WORKS HOWARD COUNTY, MARYLAND 3/15/90 3-7-90		KIDDE CONSULTANTS, INC. ENGINEERS SURVEYORS PLANNERS 1020 CROMWELL BRIDGE ROAD TOWSON, MARYLAND 21204 (301) 321-5500		DATE: _____ BY: _____ NO.: _____ REVISION: _____	PLAN AND PROFILES OF WATER AND SEWER MAINS	COLUMBIA VILLAGE OF HARPERS CHOICE SECTION 7 AREA 5 ELECTION DISTRICT NO. CONTRACT NO. 34-3009-D	SCALE 1"=50' SHEET 4 OF 4
--	--	--	--	---	---	--	------------------------------------

WATER & SEWER AS BUILT'S 4/10/90