

QUANTITIES

WATER

ITEM	BID QUANTITY	AS-BUILT QUANTITY	MATERIAL/SUPPLIER
4" WATER	43 LF		
12" x 4" TAP SLEEVE	1 EA.		

SEWER

ITEM	BID QUANTITY	AS-BUILT QUANTITY	MATERIAL/SUPPLIER
MANHOLE	3 EA		
6" PVC	1 LF		
8" PVC	833 LF		
DOORHOUSE MANHOLE	1 EA.		
4" PVC	4 LF		

GENERAL NOTES

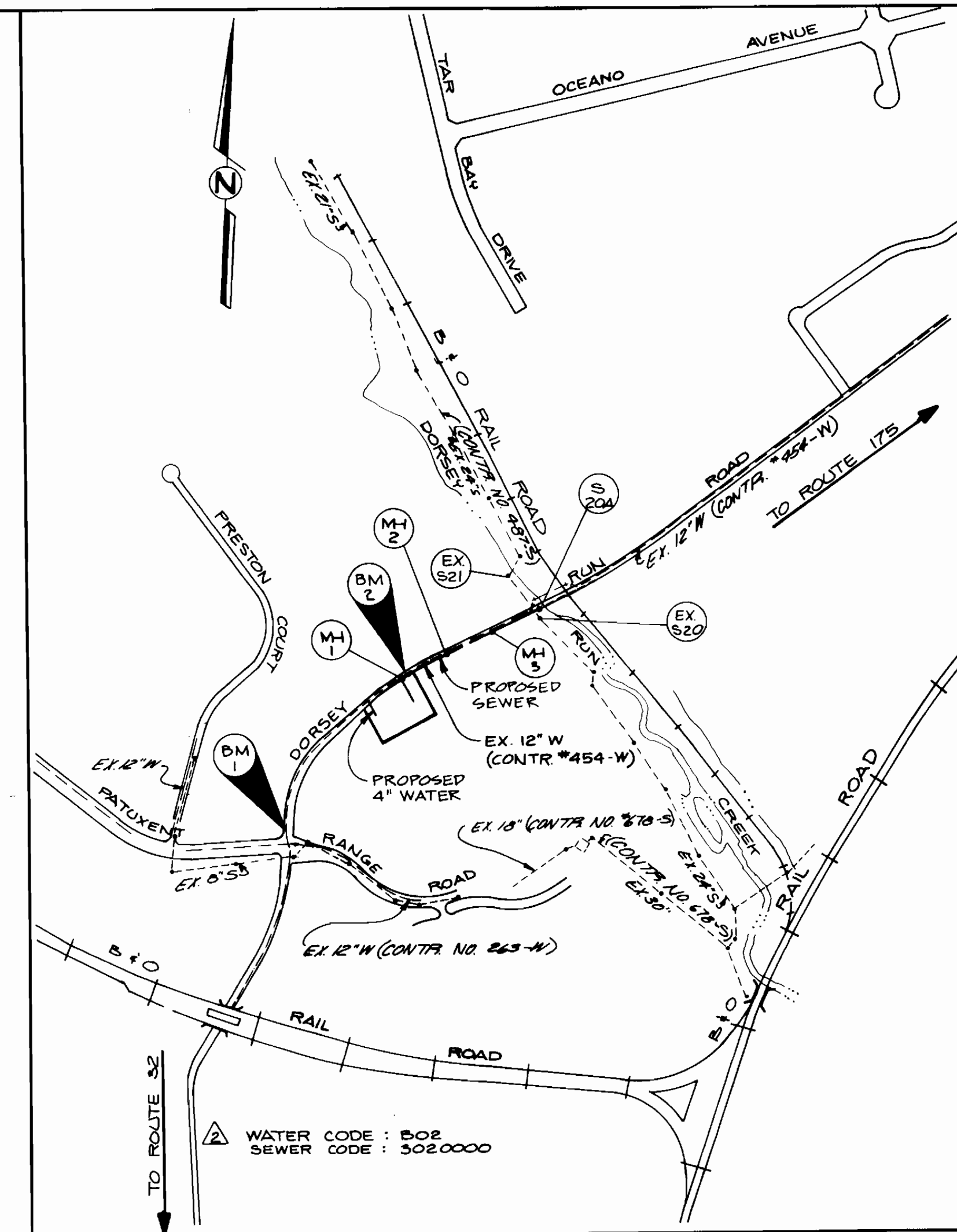
- PART I
- APPROXIMATE LOCATION OF EXISTING MAINS ARE SHOWN. THE CONTRACTOR SHALL TAKE ALL NECESSARY PRECAUTIONS TO PROTECT EXISTING MAINS AND SERVICES AND MAINTAIN UNINTERRUPTED SUPPLY. ANY DAMAGE INCURRED SHALL BE REPAIRED IMMEDIATELY TO THE SATISFACTION OF THE ENGINEER, AT THE CONTRACTOR'S EXPENSE.
 - ALL HORIZONTAL CONTROLS ARE BASED ON MARYLAND STATE COORDINATES.
 - ALL VERTICAL CONTROLS ARE BASED ON U.S.G.S. DATUM.
 - ALL PIPE ELEVATIONS SHOWN ARE INVERT ELEVATIONS.
 - CLEAR ALL UTILITIES BY A MINIMUM OF 6". CLEAR ALL POLES BY 2'-0" MINIMUM OR TUNNEL AS REQUIRED. ANY COST INCURRED TO THE CONTRACTOR FOR TUNNELING OR BRACING AT POLES SHALL BE INCLUDED IN UNIT PRICES BID FOR CONSTRUCTION OF THE MAIN.
 - FOR DETAILS NOT SHOWN ON THE DRAWINGS USE THE HOWARD COUNTY STANDARD DETAILS.
 - FOR MATERIALS AND CONSTRUCTION METHODS USE HOWARD COUNTY STANDARD SPECIFICATIONS.
 - CONTRACTOR SHALL LOCATE EXISTING UTILITIES A MINIMUM OF TWO (2) WEEKS IN ADVANCE OF CONSTRUCTION OPERATIONS IN THE VICINITY OF PROPOSED UTILITIES AT HIS OWN EXPENSE.
 - CONTRACTOR SHALL NOTIFY THE FOLLOWING UTILITIES OR AGENCIES AT LEAST FIVE (5) WORKING DAYS BEFORE STARTING WORK SHOWN ON THESE PLANS:
 STATE HIGHWAY ADMINISTRATION - 531-5533
 BALTIMORE GAS AND ELECTRIC COMPANY - UNDERGROUND ELECTRIC DISTRIBUTION CUSTOMER SERVICE - 685-0123
 BALTIMORE GAS AND ELECTRIC COMPANY - UNDERGROUND GAS DISTRIBUTION CUSTOMER SERVICE - 685-0123
 ENGINEERING - "DAMAGE CONTROL" - 234-5621
 "MISS UTILITY" - 1-559-0100
 CHESAPEAKE & POTOMAC (C&P) TELEPHONE COMPANY - 725-9976
 AMERICAN TELEPHONE AND TELEGRAPH - CABLE LOCATION DIVISION - 393-3553
 COLONIAL PIPELINE COMPANY - 795-1390
 BUREAU OF UTILITIES HOWARD COUNTY - 992-2366
 - TREES ARE TO PROTECTED FROM DAMAGE TO MAXIMUM EXTENT. TREES LOCATED WITHIN THE CONSTRUCTION STRIP ARE NOT TO BE REMOVED OR DAMAGED BY THE CONTRACTOR.
 - CONTRACTOR SHALL REMOVE TREES, STUMPS, AND ROOTS ALONG LINE OF EXCAVATION AS DIRECTED BY THE ENGINEER. PAYMENT FOR SUCH REMOVAL SHALL BE INCLUDED IN THE UNIT PRICE BID FOR CONSTRUCTION OF THE MAIN.
 - PLACE REGULATION "MEN WORKING" AND WARNING SIGNS AS REQUIRED TO COMPLY WITH MARYLAND STATE HIGHWAY ADMINISTRATION MANUAL OF TRAFFIC CONTROL FOR HIGHWAY CONSTRUCTION AND MAINTENANCE OPERATIONS.

WATER - PART II

- ALL WATER MAINS TO BE D.I.P., CLASS 52 UNLESS OTHERWISE NOTED.
- TOP OF ALL WATER MAINS TO HAVE A MINIMUM OF 3-1/2" COVER UNLESS OTHERWISE NOTED.
- VALVES ADJACENT TO TEES SHALL BE STRAPPED TO TEES.
- BLOCK ALL FITTINGS WITH CONCRETE.
- BURY LINE ELEVATIONS ON FIRE HYDRANTS SHALL BE SET TO THE ELEVATIONS SHOWN ON THE DRAWINGS. ALL FIRE HYDRANTS SHALL BE STRAPPED AND BUTTRESSED WITH CONCRETE IN ACCORDANCE WITH STANDARD DETAILS. SOIL AROUND THE FIRE HYDRANT TO BE COMPACTED IN ACCORDANCE WITH SECTIONS 1000 AND 1005 OF THE STANDARD SPECIFICATIONS.
- ALL WATER HOUSE CONNECTIONS SHALL BE FOR AN INSIDE METER SETTING.
- THE CONTRACTOR SHALL NOT OPERATE ANY WATER MAIN VALVES ON THE EXISTING SYSTEM.

SEWER - PART III

- ALL SEWER MAINS SHALL BE C.S.P.X., R.C.S.P., V.C.P.X., OR PVC UNLESS OTHERWISE NOTED.
- THE CONTRACTOR SHALL PROVIDE A JOINT IN ALL SEWER MAINS WITHIN 2'0" OF EXTERIOR MANHOLE WALL.
- ALL MANHOLES SHALL BE 4'-0" INSIDE DIAMETER, UNLESS OTHERWISE NOTED.
- FORCE MAINS SHALL BE D.I.P. ONLY.
- MANHOLES SHOWN WITH 12" AND 18" WALLS ARE BRICK MANHOLES ONLY.
- MANHOLES DESIGNATED W.T. IN PLAN AND PROFILE SHALL HAVE WATERTIGHT FRAME AND COVERS. STANDARD DETAIL G.5.52 WHERE WATERTIGHT MANHOLE FRAME AND COVER IS USED, SET TOP OF FRAME 1'-6" ABOVE FINISHED GRADE, STANDARD DETAIL G.5.41.
- HOUSE(S) WITH THE SYMBOL "C.N.S." INDICATES THAT CELLAR CAN NOT BE SERVED.



VICINITY MAP

SCALE: 1"=600'

BENCH MARK

B.M. # 1 ELEV. 235.03
 FIRE HYDRANT - CROSS CUT ON BOLT
 B.M. # 2 ELEV. 204.75
 FIRE HYDRANT - CROSS CUT ON BOLT

TYPE OF BUILDING : OFFICE / WAREHOUSE
 DRAINAGE AREA : DORSEY
 NO. SHC : 1
 NO. WHC : 1
 NO. PARCELS : 1
 WATER CODE : B02
 SEWER CODE : 3020000
 TREATMENT PLANT : L.R. WATER QUALITY MANAGEMENT CENTER SAVAGE.

NOTE:
 SEDIMENT CONTROL MEASURES WILL BE IMPLEMENTED IN ACCORDANCE WITH SECTION 219 OF THE SPECIFICATIONS AND PER SDP 90-32.

THIS DEVELOPMENT PLAN IS APPROVED FOR SOIL EROSION AND SEDIMENT CONTROL BY THE HOWARD SOIL CONSERVATION DISTRICT

APPROVED: *John K. Robertson* 8/27/90
 HOWARD S.C.D. DATE

REVIEWED FOR HOWARD S.C.D. AND MEETS TECHNICAL REQUIREMENTS.

APPROVED: *John M. H. ...* 8/27/90
 U.S. SOIL CONSERVATION SERVICE DATE

DEPARTMENT OF PUBLIC WORKS
 HOWARD COUNTY, MARYLAND

James ... 8-22-90
 DIRECTOR OF PUBLIC WORKS DATE
Robert ... 8/22/90
 CHIEF, BUREAU OF UTILITIES DATE

RBA ENGINEERS ARCHITECTS PLANNERS
 5580 STERRET PLACE SUITE 300,
 COLUMBIA, MARYLAND 21044
 (301) 730-7950



JOHN M. CHRISTMAN, P.E.
 NO. 14689

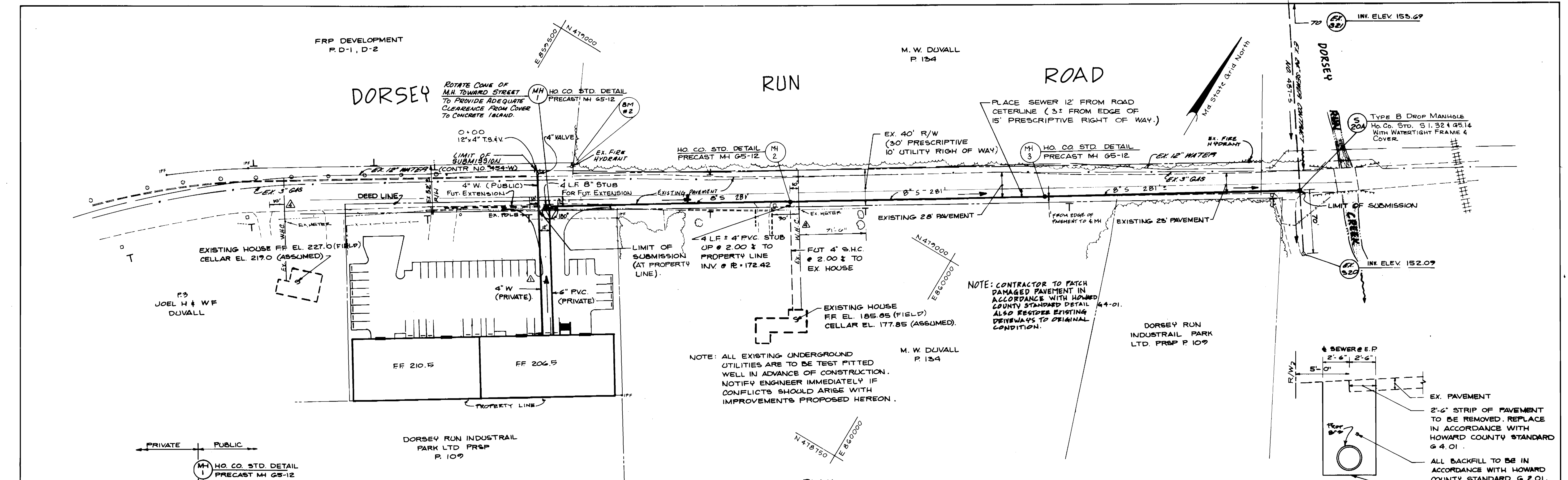
DES: A.K.L.			
DRN: T.R.	JWC	△	CORRECTE SPECIFICATION REFERENCE 11/1990
	JMM	△	AS PER H.C. DPW. COMMENTS 7/90
CHK: J.M.C.	JWC	△	AS PER H.C. DPW. COMMENTS 5/2/90 6/90
	JWC	△	AS PER H.C. DPW. COMMENTS 2/2/90 3/90
DATE: 8-8-89	BY	NO.	REVISION

SANITARY SEWER & WATER
PLAN AND PROFILE
 CONTRACT NO. 24-3008-D

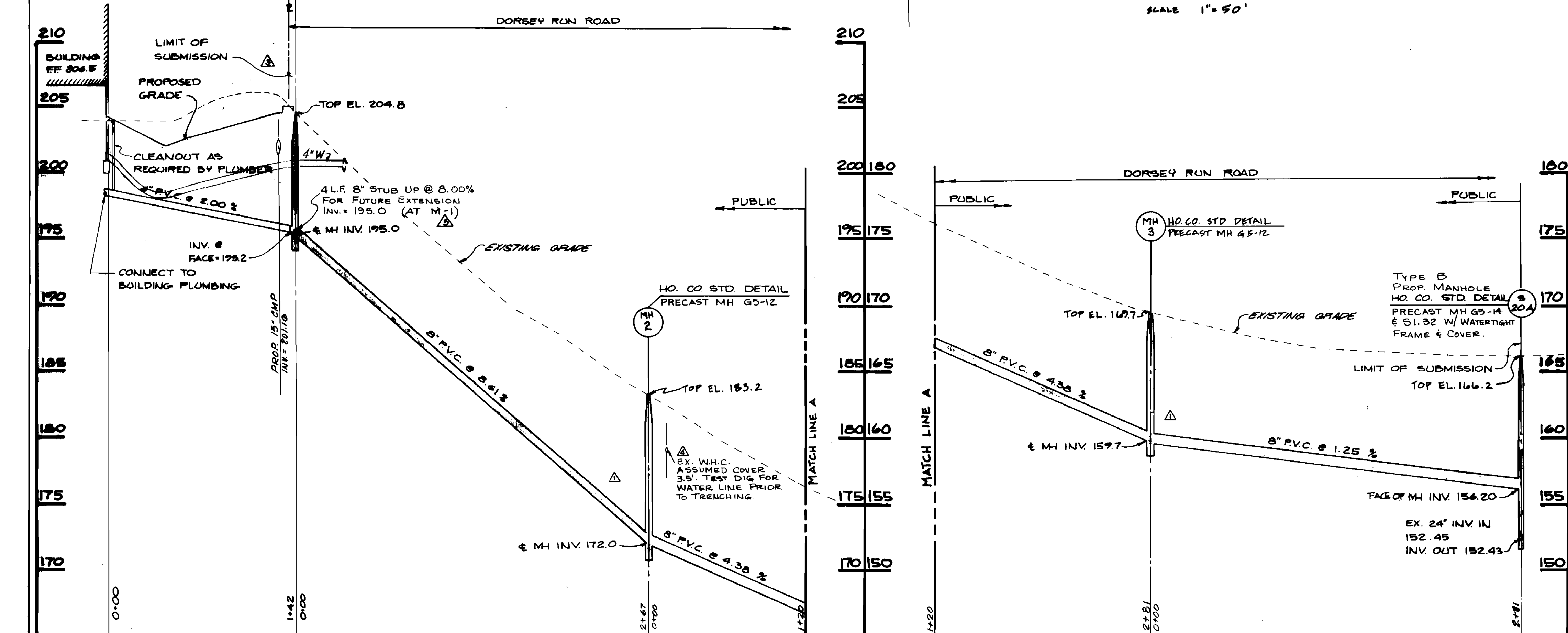
600' SCALE MAP NO. _____ BLOCK NO. _____

SELFRIDGE
 PARCEL - 4, TAX MAP - 48
 PB. 1849 F. 609
 6 ELECT. DIST. HOWARD COUNTY MD.

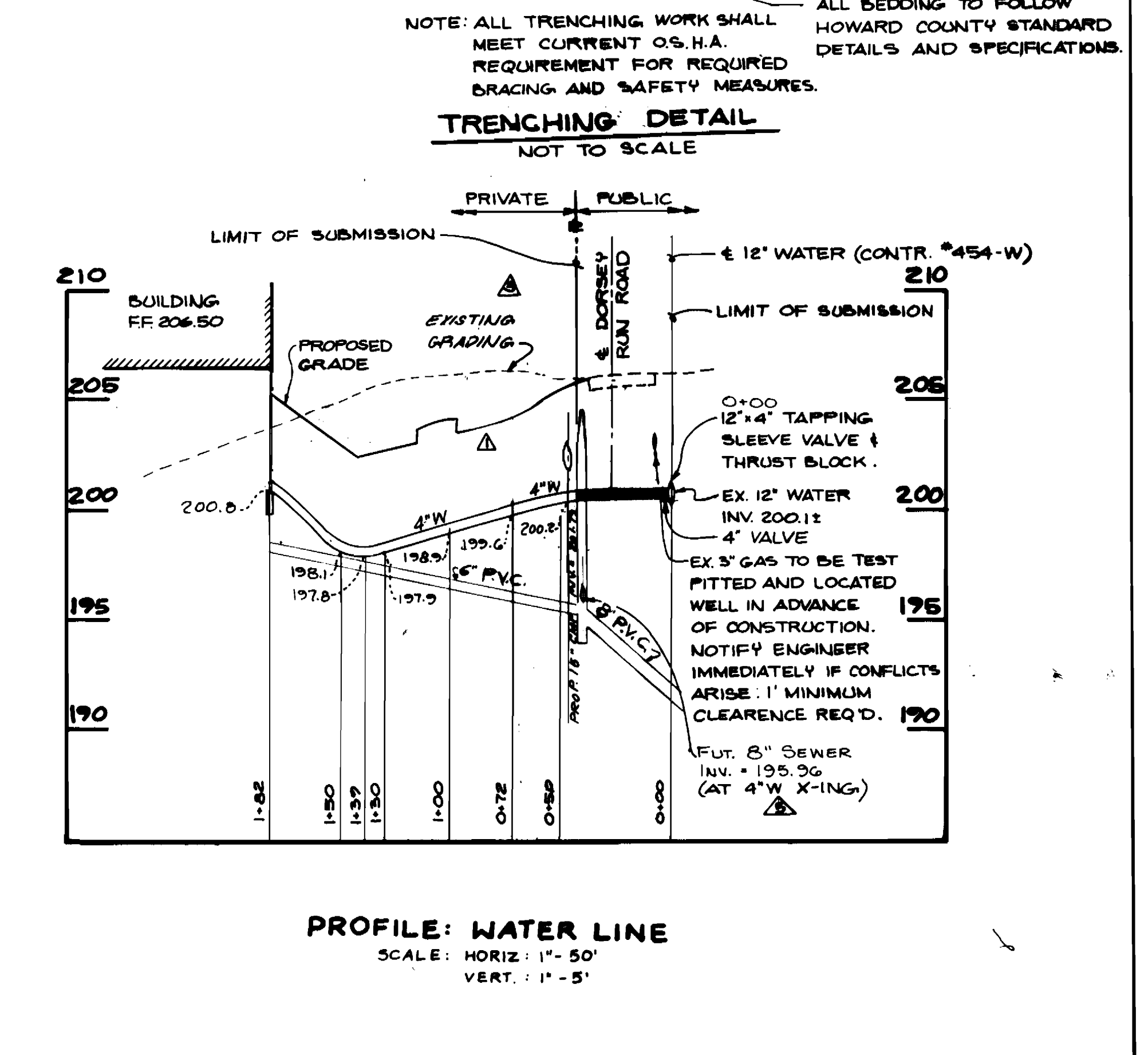
SCALE AS SHOWN
 SHEET 1 OF 2



PLAN
SCALE 1"=50'



PROFILE: SANITARY SEWER
SCALE: HORIZ - 1"=50'
VERT. - 1"=5'



PROFILE: WATER LINE
SCALE: HORIZ: 1"=50'
VERT.: 1"=5'

DEPARTMENT OF PUBLIC WORKS
HOWARD COUNTY, MARYLAND

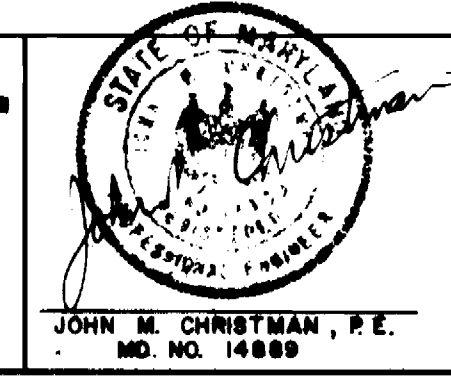
Director of Public Works: [Signature] DATE: 8-22-90

Chief Bureau of Engineering: [Signature] DATE: 8-22-90

Chief Land Development Division: [Signature] DATE: 8-22-90

RBA ENGINEERS • ARCHITECTS • PLANNERS

5560 STERRET PLACE, SUITE 300,
COLUMBIA, MARYLAND 21044
(301) 730-7960



DES: A.K.L.	JWC	CLARIFIED WATER/SEWER X-ING INFORMATION	11/20/90
DRN: T.R.	JMM	As PER H.C.D.P.W. COMMENTS	7/90
CHK: J.M.C.	JWC	As PER H.C.D.P.W. COMMENTS	5/2/90
	JWC	As PER H.C.D.P.W. COMMENTS	2/2/90
DATE: 8-8-89	JWC	RELOCATED WATER & SEWER LINES	1/90
	BY NO.	REVISION	DATE

**SANITARY SEWER & WATER
PLAN AND PROFILE**
CONTRACT NO. 24-3006-D

600' SCALE MAP NO. _____ BLOCK NO. _____

SELFRIDGE
PARCEL-4, TAX MAP-48
PB. 1049, F. 609
6 ELECT. DIST. HOWARD COUNTY, MD.

SCALE AS SHOWN
SHEET 2 OF 2