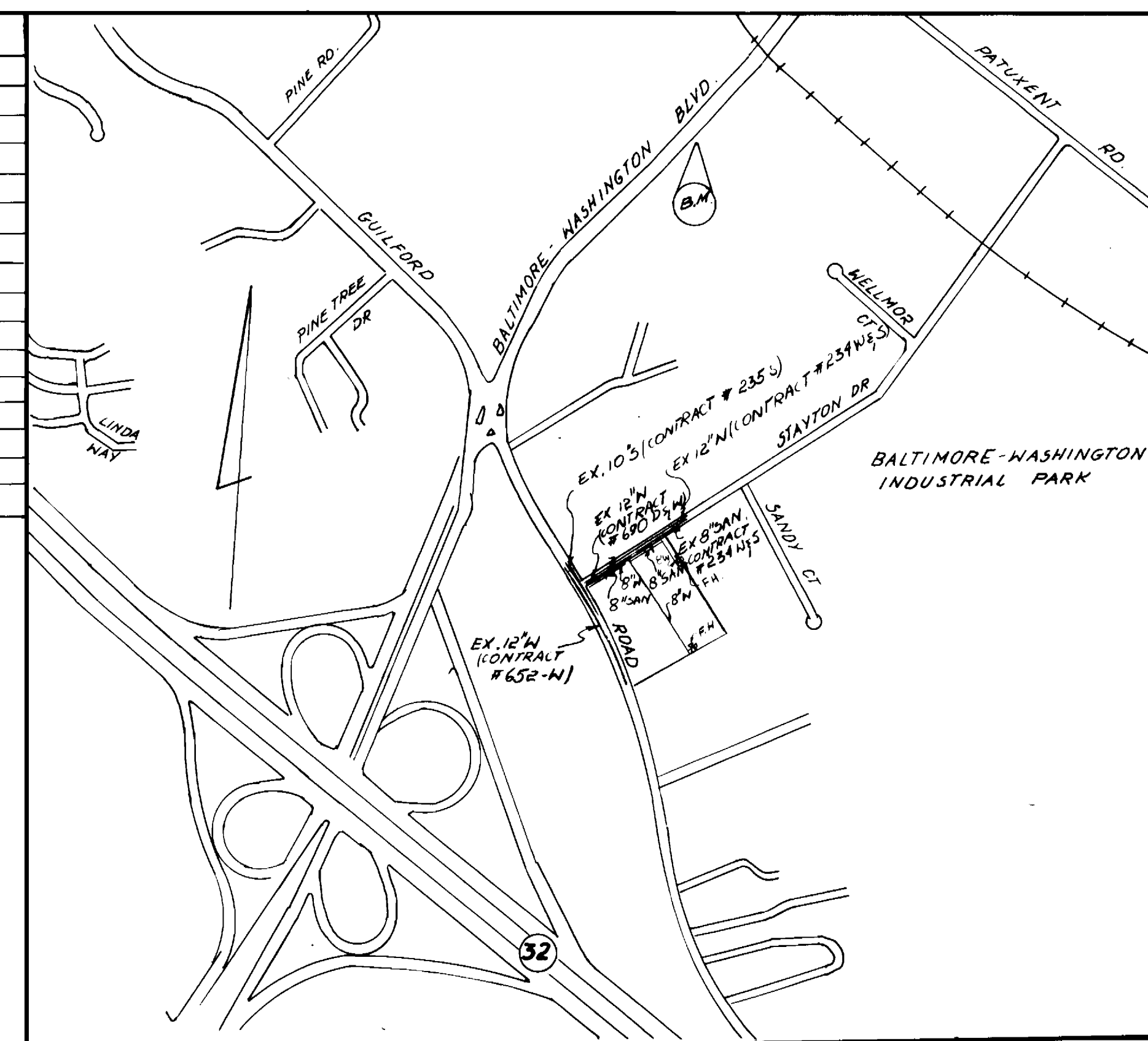


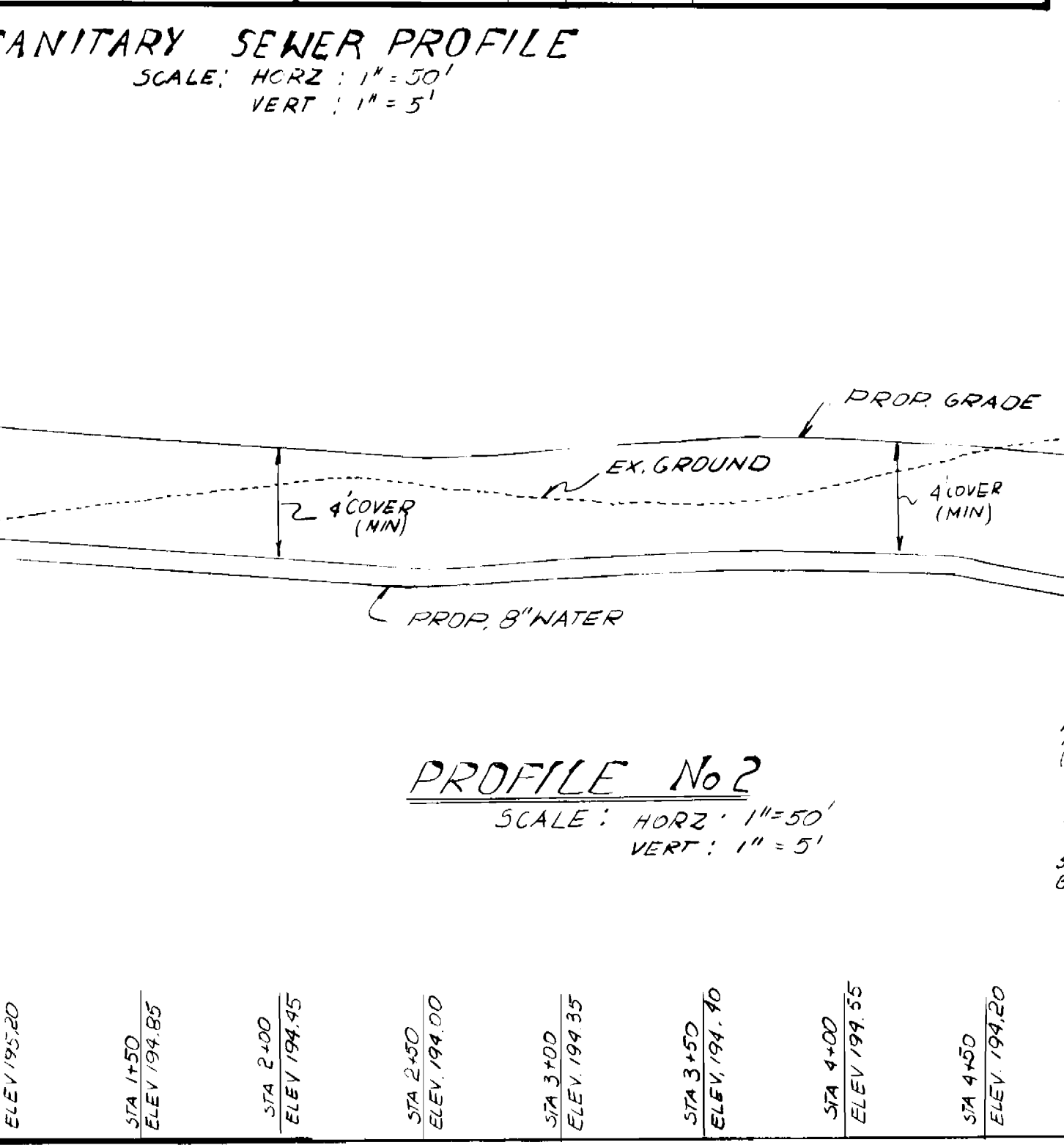
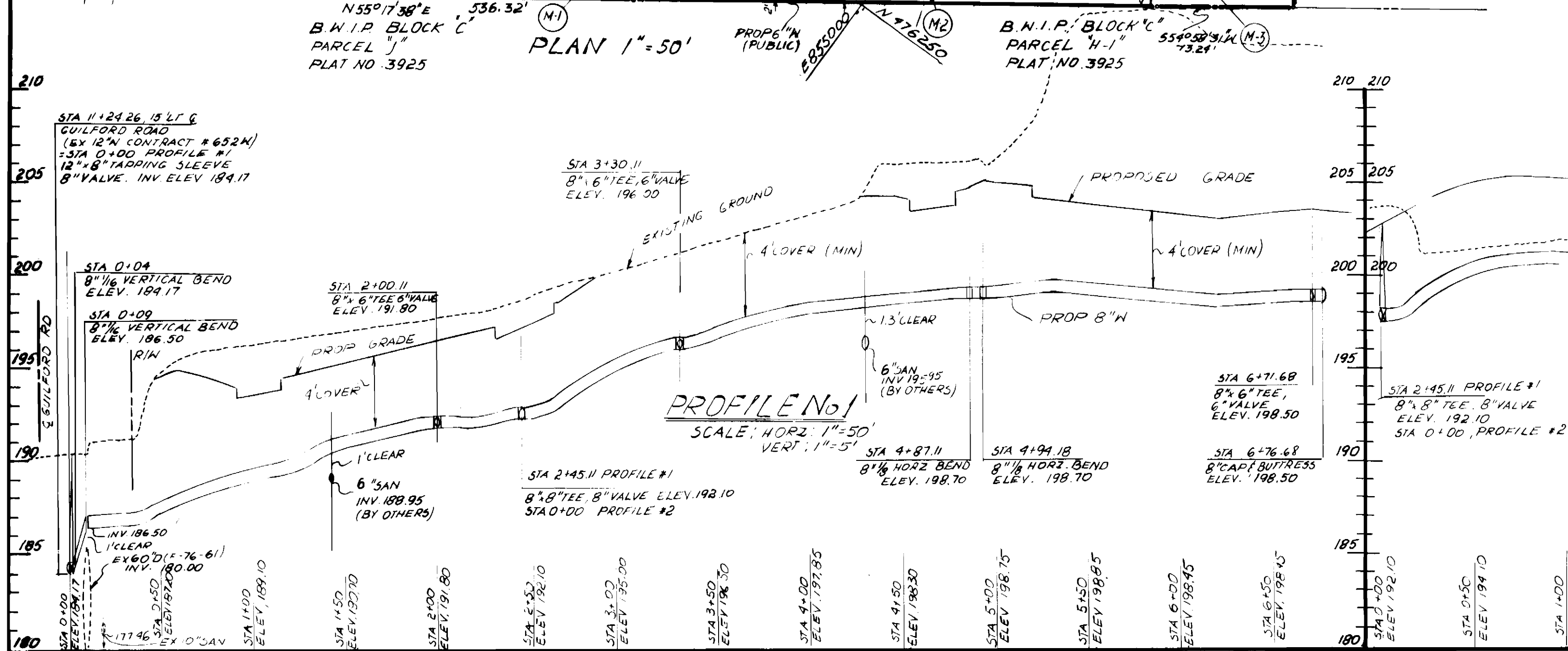
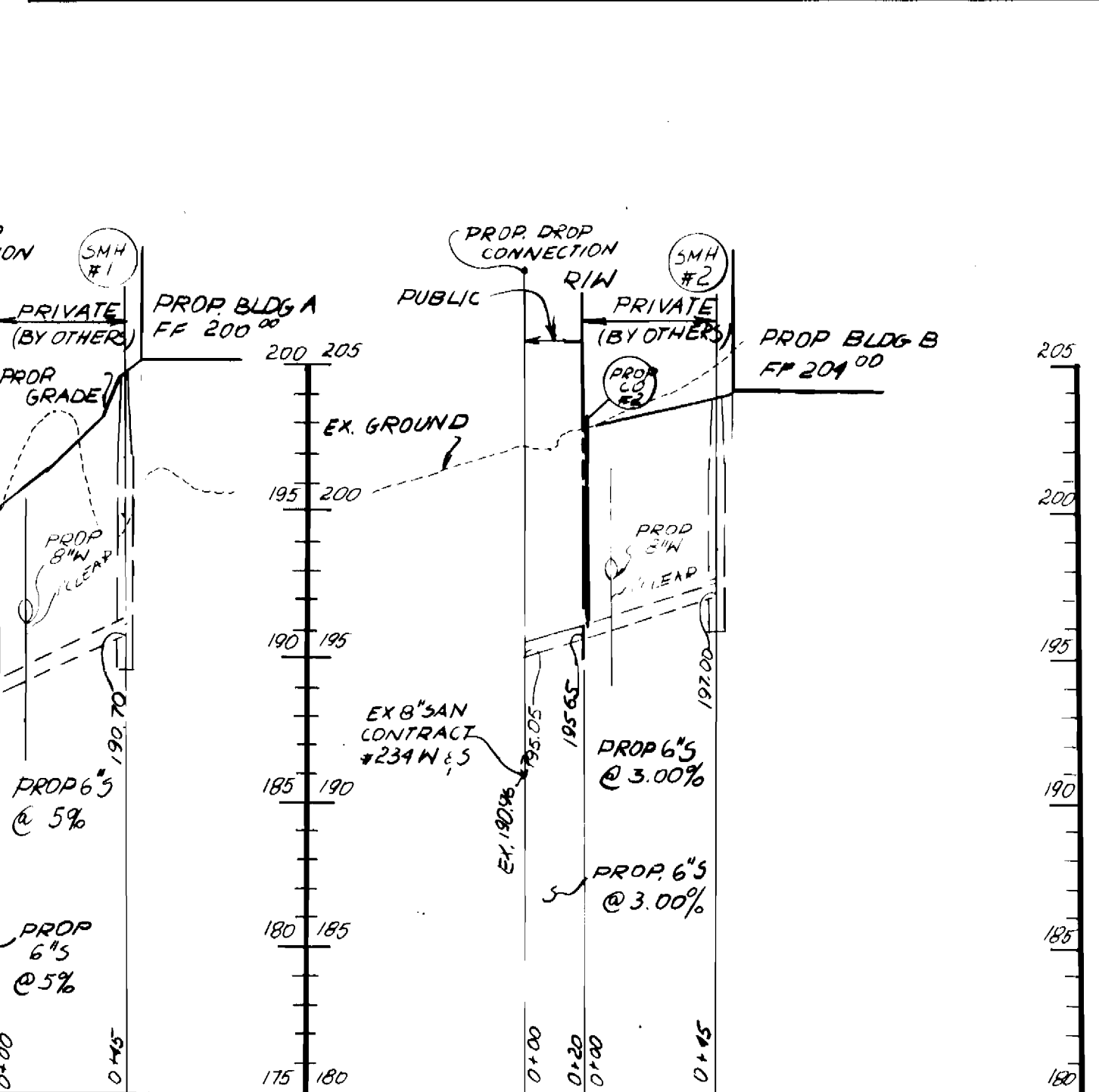
QUANTITIES		
ITEM	ESTIMATED	AS BUILT
12" x 8" TAPPING SLEEVE	1	
8" VALVE	2	
6" VALVE	4	
8" CAP & BUTTRESS	2	
8" 1/2 BEND (HORIZ)	2	
8" x 6" TEE	4	
6" D.I.P.	51 LF	
8" D.I.P.	1227 LF	
FH	2	
8" 1/2 BEND (VERT)	2	
6" SANITARY SEWER	40LF	
6" SEWER DROP CONN.	2	
CLEANOUT FOR SEWER	2	



LOCATION MAP
SCALE 1" = 600'

BENCH MARK
HOWARD CO. B.M. #2043002 ELEV. 293.831
CONC. MON. 11" FROM EAST EDGE ROUTE 1,
600' SOUTH OF B & O R.R. CROSSING.
NOTE: COORDINATES SHOWN HEREON BASED UPON
"PLAN COORDINATES - MARYLAND STATE SYSTEM"
BERKEAZIMUTH MARK N 471803.34
E 654 187.53
1964

TYPE OF BUILDING: OFFICE/WAREHOUSE/SHOP
NUMBER OF PARCELS: 1
NUMBER OF WATER H.C.: 2
NUMBER OF SEWER H.C.: 2
DRAINAGE AREA: LITTLE PATUXENT
WATER CODE 802
SEWER CODE 4201200



- GENERAL NOTES**
- APPROXIMATE LOCATION OF EXISTING MAINS ARE SHOWN. THE CONTRACTOR SHALL TAKE ALL NECESSARY PRECAUTIONS TO PROTECT EXISTING MAINS AND SERVICE AND MAINTAIN UNINTERRUPTED SUPPLY. ANY DAMAGE INCURRED SHALL BE REPAIRED IMMEDIATELY TO THE SATISFACTION OF THE ENGINEER AT THE CONTRACTOR'S EXPENSE.
 - ALL HORIZONTAL CONTROLS ARE BASED ON MARYLAND STATE COORDINATES.
 - ALL VERTICAL CONTROLS ARE BASED ON U.S.G.S. DATA.
 - ALL PIPE ELEVATIONS ARE INVERT ELEVATIONS.
 - CLEAR ALL UTILITIES BY A MINIMUM OF 8". CLEAR ALL POLES BY 2'-0" MINIMUM OR TUNNEL AS REQUIRED. THE OWNER HAS CONTACTED THE UTILITY COMPANIES AND HAS MADE ARRANGEMENTS FOR BRACING OF POLES AS SHOWN ON THE DRAWINGS. IN THE EVENT THE CONTRACTOR'S WORK REQUIRES THE BRACING OF ADDITIONAL POLES, ANY COST INCURRED BY THE OWNER FOR THE BRACING OF ADDITIONAL POLES OR DAMAGE SHALL BE DEDUCTED FROM THE MONEY OWED TO THE CONTRACTOR. THE CONTRACTOR SHALL COORDINATE WITH THE UTILITY COMPANIES TO SCHEDULE THE BRACING OF POLES.
 - FOR DETAILS NOT SHOWN ON THE DRAWINGS, AND FOR MATERIALS AND CONSTRUCTION METHODS, USE HOWARD COUNTY DESIGN MANUAL VOL. IV, STANDARD SPECIFICATIONS AND DETAILS FOR CONSTRUCTION. THE CONTRACTOR SHALL HAVE A COPY OF VOL. IV ON THE JOB.
 - WHERE TEST PITS HAVE BEEN MADE ON EXISTING UTILITIES THEY ARE NOTED BY THE SYMBOL. AT THE LOCATION OF THE TEST PIT, A NOTE OR NOTES CONTAINING RESULTS OF THE TEST PITS IS INCLUDED ON THE DRAWINGS. EXISTING UTILITIES IN THE VICINITY OF THE PROPOSED WORK FOR WHICH TEST PITS HAVE NOT BEEN MADE SHALL BE LOCATED BY THE CONTRACTOR TWO WEEKS IN ADVANCE OF CONSTRUCTION OPERATIONS AT HIS OWN EXPENSE.
 - CONTRACTOR SHALL NOTIFY THE FOLLOWING UTILITIES OR AGENCIES AT LEAST FIVE WORKING DAYS BEFORE STARTING WORK SHOWN ON THESE PLANS: STATE HIGHWAY ADMINISTRATION 531-5653, BALTO. GAS & ELECTRIC COMPANY - CONTRACTOR SERVICES 850-4820, BALTO. GAS & ELECTRIC COMPANY - UNDERGROUND DAMAGE CONTROL 859-3004, BALTO. GAS & ELECTRIC COMPANY - TROUBLE SHOOTING 298-8001, MISS UTILITY 1-(301) 558-0100, COLONIAL PIPELINE 785-1300 BUREAU OF UTILITIES, HOWARD COUNTY DEPT. OF PUBLIC WORKS 992-2366, C & P TELEPHONE 1-(800) 257-7777.
 - TREES AND SHRUBS ARE TO BE PROTECTED FROM DAMAGE TO MAXIMUM EXTENT. TREES AND SHRUBS LOCATED WITHIN THE CONSTRUCTION STRIP ARE NOT TO BE DAMAGED OR REMOVED BY THE CONTRACTOR.
 - CONTRACTOR SHALL REMOVE TREES, STUMPS, AND ROOTS ALONG THE LINE OF EXCAVATION. PAYMENT FOR SUCH REMOVAL SHALL BE INCLUDED IN THE UNIT PRICE BID FOR CONSTRUCTION OR THE MARK.
 - MANHOLES SHOWN WITH 12" WALLS ARE BRICK MANHOLES ONLY.
 - MANHOLES DESIGNATED WITHIN THE PLAN AND PROFILE SHALL HAVE WATERPROOF FRAME AND COVERS, STANDARD DETAIL 65.52, WHERE WATERPROOF MANHOLE FRAME AND COVER IS USED, SET TOP OF FRAME 1'-8" ABOVE FINISHED GRADE UNLESS NOTED ON DRAWINGS.
 - MANHOLES LOCATED WITHIN PROPOSED ROADWAY SHALL HAVE STANDARD HEAVY TRAFFIC MANHOLE FRAME AND COVER, STANDARD DETAIL 65.51.
 - THE CONTRACTOR SHALL ARRANGE TO HAVE THE EXISTING UNDERGROUND CABLE FIELD-LOCATED PRIOR TO ANY EXCAVATION FOR THE SEWER MAIN.

REVIEWED FOR HOWARD SOIL CONSERVATION DISTRICT AND MEETS TECHNICAL REQUIREMENTS.
DATE: 6/15/89
HOWARD SOIL CONSERVATION DISTRICT

THIS DEVELOPMENT PLAN IS APPROVED FOR SOIL EROSION & SEDIMENT CONTROL BY THE HOWARD SOIL CONSERVATION DISTRICT.
DATE: 6/15/89
HOWARD SOIL CONSERVATION DISTRICT

SEDIMENT CONTROL MEASURES FOR THIS CONTRACT WILL BE IMPLEMENTED IN ACCORDANCE WITH SECTION 219 OF THE STANDARDS SPECIFICATIONS AND SDP-90-78

DEPARTMENT OF PUBLIC WORKS DIRECTOR OF PUBLIC WORKS DATE: 6/15/89 CHIEF, BUREAU OF UTILITIES DATE: 6/15/89		ENGINEER GEORGE WM. STEPHENS, JR. AND ASSOCIATES, INC. 658 KENILWORTH DRIVE TOWSON, MD. 21204 (301) 825-8120		DESIGNED: V.Z. DRAWN: H.C. CHECKED: V.Z.		REVISION NO. DATE		PLAN AND PROFILE FOR PROPOSED WATER MAIN AND SANITARY SEWER CONTRACT NO. 24-3007-D 600' SCALE MAP NO. 48 BLOCK NO. 1 300-90-78		SCALE: AS SHOWN SHEET 1 OF 1	
--	--	--	--	--	--	----------------------	--	--	--	---------------------------------------	--