

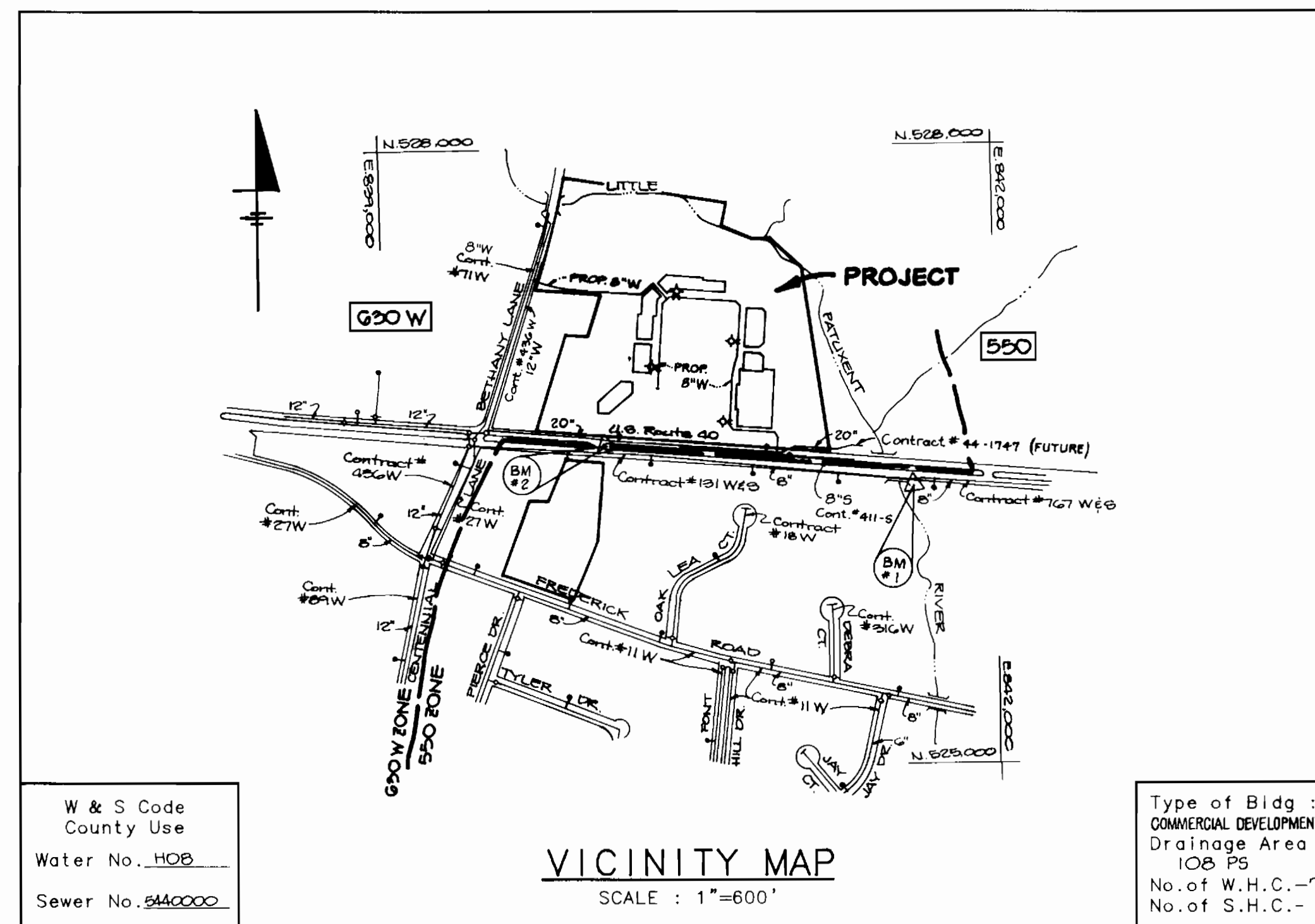
# THE ENCHANTED FOREST

## CONTRACT NO. 24-3004-D 2nd ELECTION DISTRICT HOWARD COUNTY MARYLAND

SHEET INDEX	
SHEET NO.	DESCRIPTION
1	TITLE SHEET
2	PLAN OF WATER AND SEWER MAINS
3	PROFILE OF WATER AND SEWER MAINS
4	PROFILE OF WATER MAIN

### BENCHMARKS

- B.M. #1 - HO. CO. MONUMENT # 3241002 ELEV. 354.60  
N 526, 327.261 E 841, 575.71  
CONC. MON. @ SURF. 0.5' ± S OF EDGE OF RT. 40  
EAST 11.3' E OF EAST END OF CONC. BRIDGE
- B.M. #2 - HO. CO. MONUMENT # 3241001 ELEV. 388.65  
N 526, 573.744 E 840096.686  
CONC. MON. @ SURF. 0.3' ± N OF N. EDGE  
RT. 40 E. BOUND 21' ± E. OF E. EDGE OF  
CROSSOVER @ ENCHANTED FOREST.



### GENERAL NOTES

- Approximate location of existing mains are shown. The contractor shall take all necessary precautions to protect existing mains and services and maintain uninterrupted supply. Any damage incurred shall be repaired immediately to the satisfaction of the engineer at the contractor's expense.
- All horizontal controls are based on Maryland State coordinates.
- All vertical controls are based on U.S.G.S. data.
- All pipe elevations shown are invert elevations.
- Clear all utilities by a minimum of 6".
- For details not shown on the drawings, and for materials and construction methods, use Howard County Design Manual, Volume IV, Standard Specifications and Details for Construction (Amended January, 1989). The contractor shall have a copy of Volume IV on the job.
- Where test pits have been made on existing utilities, they are noted by the symbol [ ] at the location of the test pit. A note or notes containing the results of the test pit or pits is included on the drawings. Existing utilities in the vicinity of the proposed work for which test pits have not been dug shall be verified by the contractor to his own personal satisfaction. Any damage to existing facilities due to the contractor's negligence shall be repaired at the contractor's expense.
- The contractor shall notify the following utilities or agencies at least five working days before starting work shown on these plans:
 

State Highway Administration	531-5533
Baltimore Gas and Electric Co. - Contractor Services	850-4620
Baltimore Gas and Electric Co. - Underground Damage Control	859-9004
Baltimore Gas and Electric Co. - Trouble Shooting	298-9001
Miss Utility	1-559-9100
Colonial Pipeline Co.	795-1390
Bureau of Utilities, Ho. Co. Department of Public Works	992-2386
C & P Telephone Co.	1-800-257-7777
- Trees and shrubs are to be protected from damage to maximum extent. Trees and shrubs located within the construction strip are not to be removed or damaged by the contractor.
- The contractor shall remove trees, stumps and roots along line of excavation. Payment for such removal shall be included in the unit price bid for construction of the main.
- All water mains to be D.I.P. Class 52 unless otherwise noted.
- Tops of all water mains to have a minimum of 3-1/2' cover unless otherwise noted.
- Valves adjacent to trees shall be strapped to trees.
- All fittings shall be buttressed or anchored with concrete in accordance with the Standard Details unless otherwise provided for on the drawings.
- Fire hydrants shall be set to the bury line elevation shown on the drawings. All fire hydrants shall be strapped and buttressed with concrete in accordance with the Standard Details. Soil around the fire hydrant shall be compacted in accordance with Section 1005 of the Standard Specifications.
- The contractor shall not operate any water main valves on the existing water system.
- All water house connections shall be for inside meter setting, unless otherwise noted on the plans or in the Specifications.
- All service clamps are to have stainless straps.
- All D.I.P. fittings shall be in accordance with A.W.W.A. specifications C-153 Ductile Iron Compact Fittings, 3" through 12" for water and other liquids.
- All sewer mains shall be C.S.P.X., R.C.S.P., V.C.P.X., or P.V.C. unless otherwise noted.
- The contractor shall provide a joint in all sewer mains within 2'-0" of exterior manhole wall.
- All manholes shall be 4'-0" inside diameter unless otherwise noted.

- Manholes shown with 12" and 16" walls are for brick manholes only.
- Manholes designated W.T. in plan and profile shall have watertight frame and covers, Standard Detail 05-52. Where watertight manhole frame and cover is used, set top of frame 1'-6" above finished grade unless otherwise noted on the drawings.
- House(s) with the symbol "C.N.S." indicates that the cellar cannot be served.

Item	Quantities		Material/Supplier
	Estimated	As Built	
8" WATER	2,445 L.F.		
6" WATER	146 L.F.	357.5 L.F.	AT&P WATER & SEWER SUPPLIES
8" SEWER	25 L.F.	25 L.F.	
12" x 8" T.S. #V	1 EA.		
8" VALVE	4 EA.	4 EA.	
6" VALVE	11 EA.	11 EA.	
4" VALVE	1 EA.	1 EA.	
12" x 8" T.S. #V	1 EA.		
4" BLOWOFF	1 EA.	1 EA.	
8" PLUG & BUTTRESS	1 EA.	1 EA.	
FIRE HYDRANT	5 EA.	4 EA.	
SAN. MANHOLE	1 EA.	1 EA.	ATLANTIC CONC. PRODUCTS
OUT SIDE 2" METER VAULT	1 EA.	1 EA.	

Sediment control measures for this contract will be implemented in accordance with Section 219 of the Specifications and as shown on SDP-30-74

*John F. Reuter* 10/23/90  
HOWARD SOIL CONSERVATION DISTRICT

Review for Howard Soil Conservation District and meet technical requirements.

*John F. Reuter* 10/24/90  
HOWARD SOIL CONSERVATION SERVICE

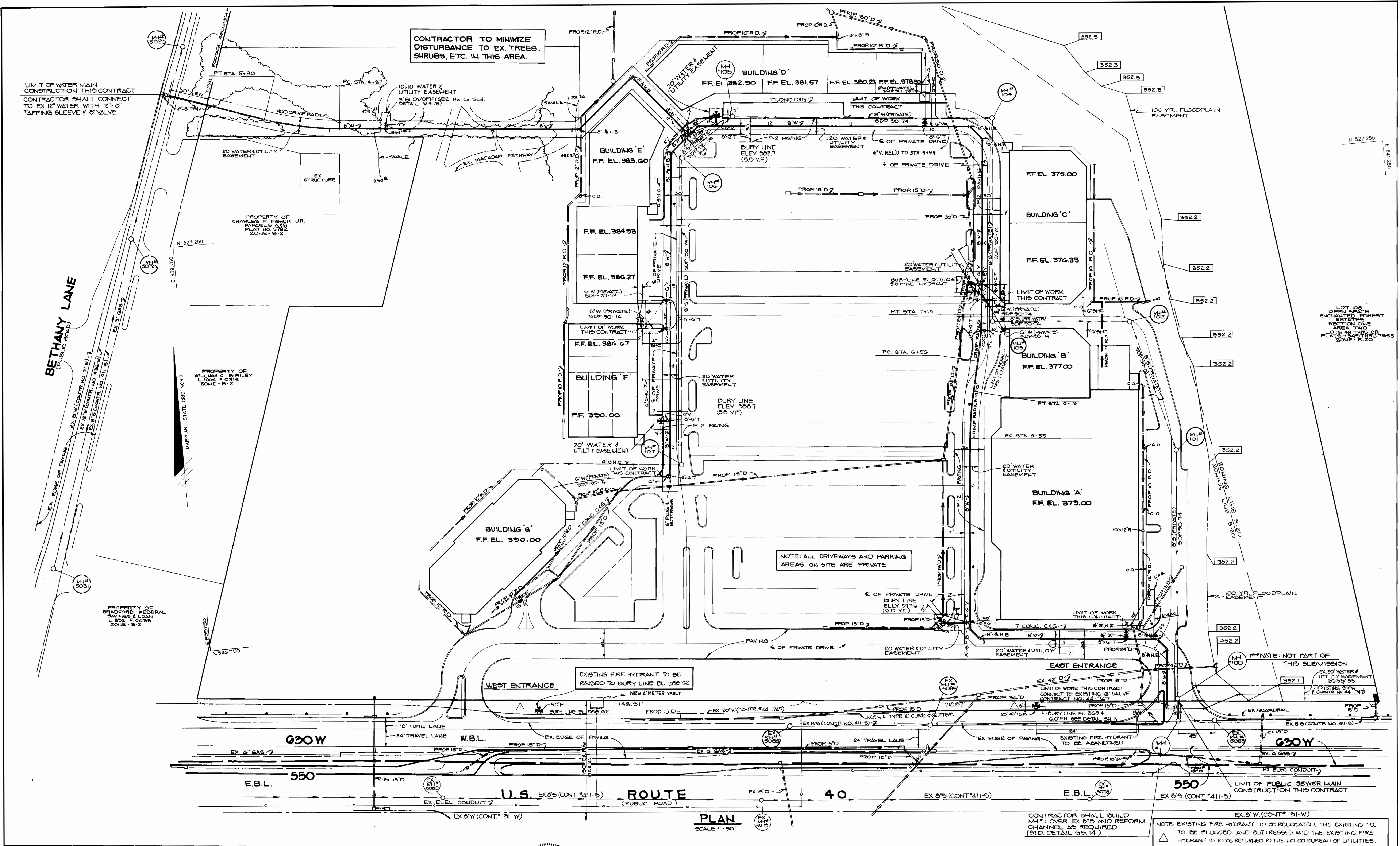
This plan is approved for soil erosion and sediment control by the Howard Soil Conservation District.

*John F. Reuter* 10/23/90  
HOWARD SOIL CONSERVATION DISTRICT

THE ENCHANTED FOREST  
COMMERCIAL CENTER  
PARCEL A

DEPARTMENT OF PUBLIC WORKS HOWARD COUNTY, MARYLAND Director of Public Works (Acting) 10/26/90 Chief, Bureau of Engineering 10-26-90 Chief, Bureau of Utilities 10-17-90 Chief, Land Development 10/18/90	RIEMER MUEGGE & ASSOCIATES, INC. 3105 NORTH RIDGE ROAD ELLICOTT CITY, MARYLAND (301) 461-2690 ARTHUR E. MUEGGE #8707	DES: DBS DRN: CAD CHK: DATE: 10-5-89	TITLE SHEET 600' SCALE MAP NO. 24 BLOCK NO. 2	THE ENCHANTED FOREST 2nd ELECTION DISTRICT HOWARD COUNTY, MARYLAND CONTRACT NO. 24-3004-D SCALE AS SHOWN SHEET 1 OF 4
---	--	---	--	--





CONTRACTOR TO MINIMIZE DISTURBANCE TO EX. TREES, SHRUBS, ETC. IN THIS AREA.

NOTE: ALL DRIVEWAYS AND PARKING AREAS ON SITE ARE PRIVATE

EXISTING FIRE HYDRANT TO BE RAISED TO BURY LINE EL. 388.02  
NEW 2" METER VAULT

CONTRACTOR SHALL BUILD M.H. 1 OVER EX. B'S AND REFORM CHANNEL AS REQUIRED (STD. DETAIL G3.14)

NOTE: EXISTING FIRE HYDRANT TO BE RELOCATED. THE EXISTING TEE TO BE PLUGGED AND BUTTRESSED AND THE EXISTING FIRE HYDRANT IS TO BE RETURNED TO THE HO GO BUREAU OF UTILITIES.

DEPARTMENT OF PUBLIC WORKS  
HOWARD COUNTY, MARYLAND

RIEMER MUEGGE & ASSOCIATES, INC.  
3105 NORTH RIDGE ROAD  
ELLCOTT CITY, MARYLAND  
(301) 461-2690



DES: D.B.S.	
DRN: G.D.H.	
CHK:	
DATE: 10-5-90	BY: NO.
DATE: 10/3/90	REVISION

PLAN  
OF WATER AND  
SEWER MAINS

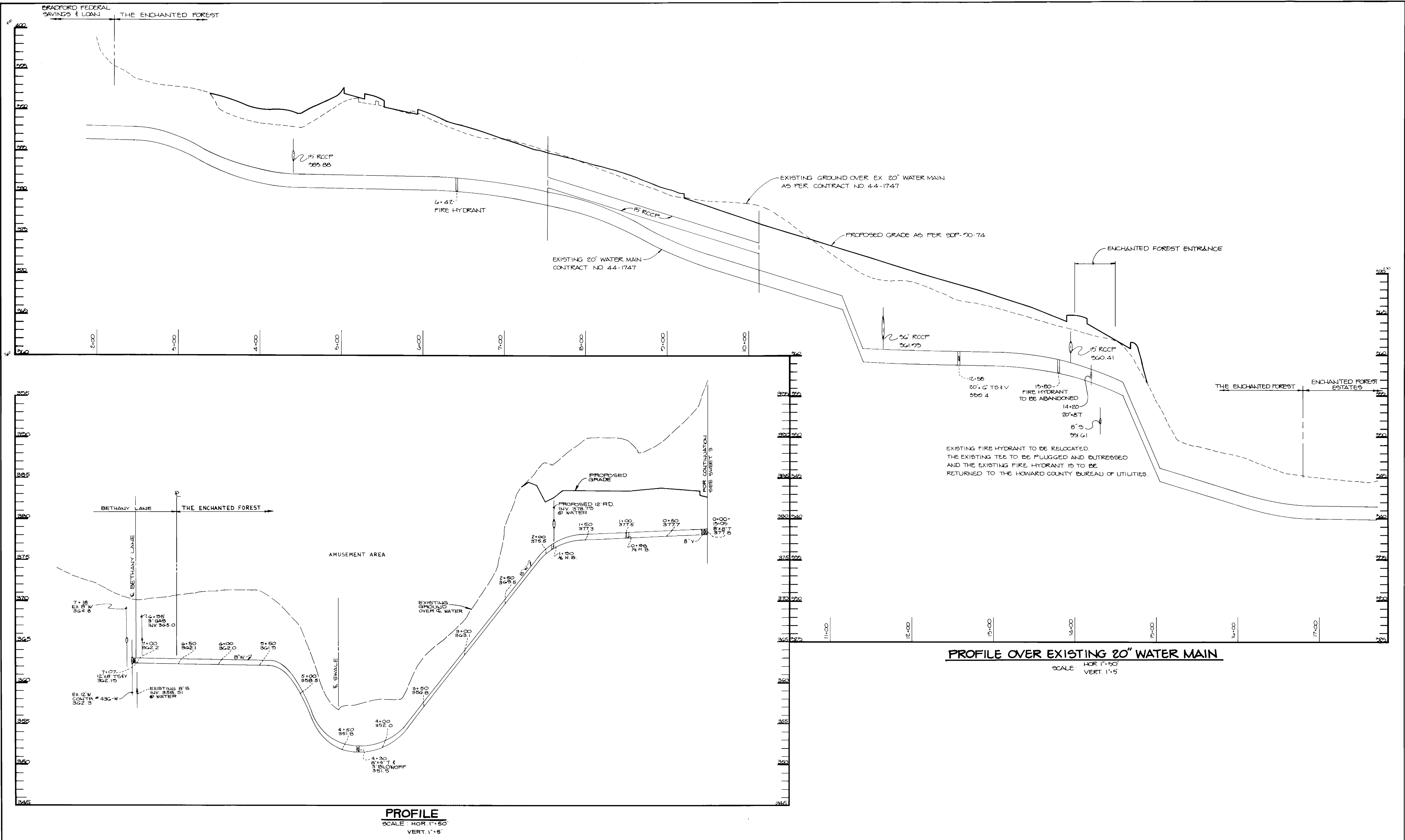
THE ENCHANTED FOREST  
2nd ELECTION DISTRICT  
HOWARD COUNTY, MARYLAND  
CONTRACT NO. 24-3004-D

SCALE AS SHOWN

SHEET 2 OF 4







DEPARTMENT OF PUBLIC WORKS  
HOWARD COUNTY, MARYLAND

*Paul W. Johnson* 10/26/90  
DIRECTOR OF PUBLIC WORKS (Acting) DATE

*Richard W. Benjamin* 10-17-90  
CHIEF, BUREAU OF UTILITIES DATE

*William E. Ryan* 10-26-90  
CHIEF, BUREAU OF ENGINEERING DATE

*Arthur E. Muegge* 10/26/90  
CHIEF, LAND DEVELOPMENT DATE

RIEMER MUEGGE & ASSOCIATES, INC.  
3105 NORTH RIDGE ROAD  
ELLCOTT CITY, MARYLAND  
(301) 461-2690



DES: DBS				
DRN: GDH				
CHK:				
DATE: 10-5-89	BY: NO.	REVISION	DATE	

PROFILE OF WATER MAIN

600' SCALE MAP NO. 24 BLOCK NO. 2

THE ENCHANTED FOREST  
2nd ELECTION DISTRICT  
HOWARD COUNTY, MARYLAND  
CONTRACT NO. 24-3004-D

SCALE AS SHOWN  
SHEET 4 OF 4