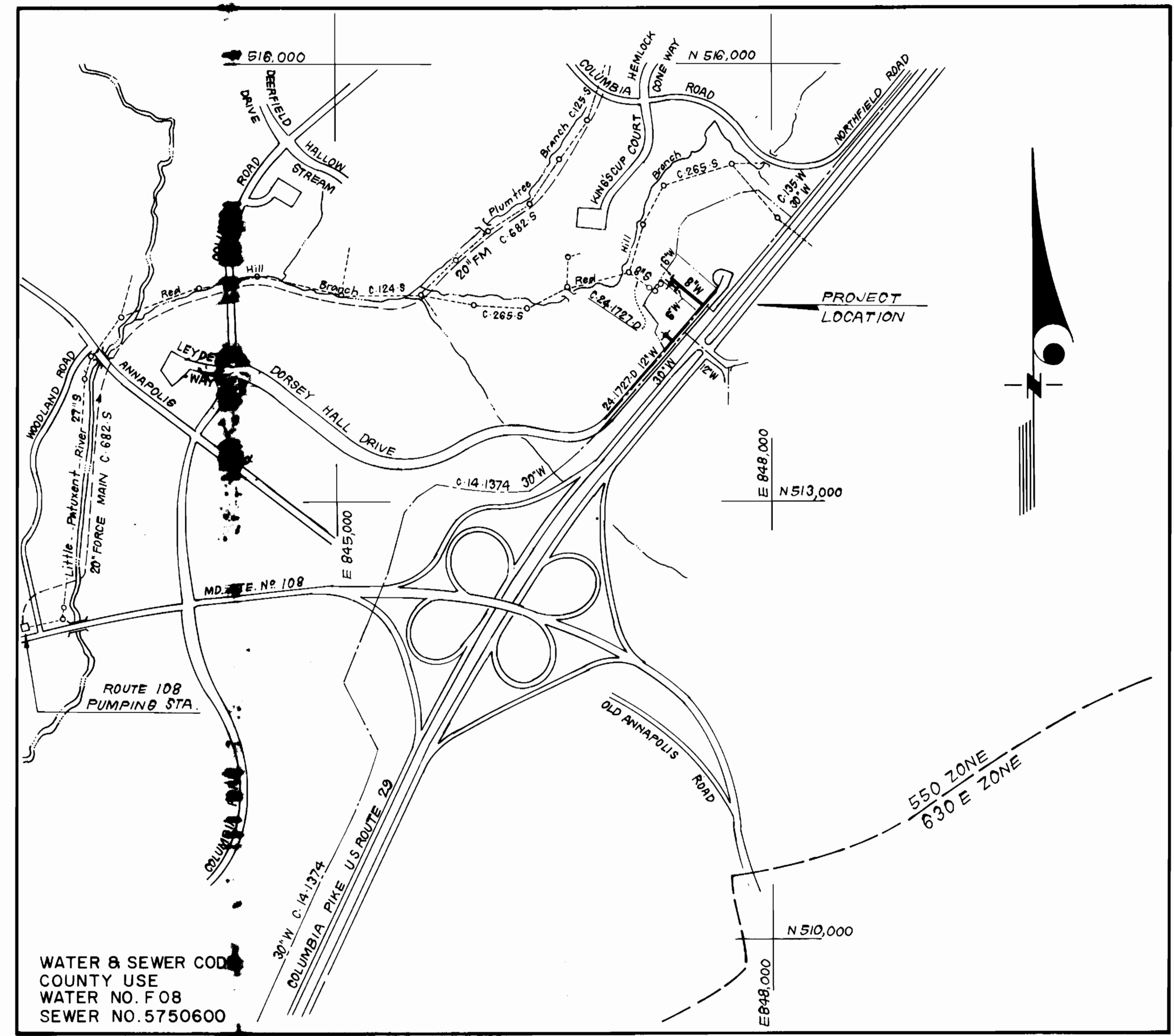


TYPE OF BUILDING	OFFICE BUILDING
NO. OF LOTS	TWO
NO. OF WHC's	TWO
NO. OF SHC's	TWO
DRAINAGE AREA	ROUTE 108 PUMPING STATION PATAPSCO



VICINITY MAP  
SCALE: 1" = 600'

GENERAL NOTES

- Approximate location of existing mains are shown. The contractor shall take all necessary precautions to protect existing mains and services and maintain uninterrupted supply. Any damage incurred shall be repaired immediately to the satisfaction of the Inspector, at the contractor's expense.
- All horizontal controls are based on Maryland State Coordinates.
- All vertical controls are based on U.S.G.S. Datum.
- All pipe elevations shown are invert elevations.
- Clear all utilities by a minimum of 6" clear all poles by 2'-0" minimum or tunnel as required. Any cost incurred to the contractor for tunneling or bracing at poles shall be included in unit prices bid for excavation and backfill.
- For details not shown on the drawings use Howard County Standard Specifications and Howard County Design Manual, Volume IV, 1989 Amendments. The Contractor shall have Volume IV, 1989 Amendments on the jobsite.
- Contractor shall locate existing utilities a minimum of two (2) weeks in advance of construction operations in the vicinity of proposed utilities at his own expense.
- Contractor shall notify the following utilities or agencies at least five (5) working days before starting work shown on these plans.
  - State Highway Administration - 531-5533
  - Baltimore Gas & Electric Company - Underground Damage Control - 859-9004
  - Baltimore Gas & Electric Company - Contractor Services - 850-4620
  - Baltimore Gas & Electric Company - Trouble Shooting - 298-9001
  - "Miss Utility" - 1-800-257-7777
  - Chesapeake & Potomac (C & P) Telephone Company - 1-800-257-7777
  - Bureau of Utilities Howard County - 992-2366
  - Colonial Pipeline Company - 795-1390
- Trees are to be protected from damage to maximum extent. Trees located within the construction strip are not to be removed or damaged by the contractor.
- Contractor shall remove trees, stumps, and roots along line of excavation as directed by the Inspector. Payment for such removal shall be included in the unit price bid for excavation and backfill.
- Place regulation "Men Working" and warning signs as required to comply with Maryland State Highway Administration Manual of Traffic Control for Highway Construction and Maintenance Operations.
- All water mains to be D.I.P. Class 52 unless otherwise noted.
- Top of all water mains to have a minimum of 3-1/2' cover unless otherwise noted.
- Valves adjacent to trees shall be strapped to trees.
- Block all fittings with concrete.
- Bury line elevations on fire hydrants shall be set to the elevations shown on the drawings. All fire hydrants shall be strapped and buttressed with concrete in accordance with standard details. Soil around the fire hydrant to be compacted in accordance with Sections 1000 & 1005 of the Standard Specifications.
- All water house connections shall be for an inside meter setting.
- The contractor shall not operate any water main valves on the existing system unless otherwise noted.
- All sewer mains shall be C.S.P.X., V.C.P.X., or P.V.C.
- The contractor shall provide a joint in all sewer mains within 2'-0" of exterior manhole wall.
- All manholes shall be 4'-0" inside diameter, unless otherwise noted.
- Water main and water house connection lines must have a minimum of one foot separation from the sanitary sewer and sewer house connections as they cross. Except at crossings, water and sewer lines shall have a minimum horizontal separation of 10'.
- Manholes designated thus: WT, shall have a Watertight Frame and Cover.

CONTRACT NO.44-1998- D  
DORSEY HALL, SECTION ONE, AREA FIVE  
PARCELS 0-2 & 0-3  
HOWARD COUNTY, MARYLAND  
DEPARTMENT OF PUBLIC WORKS

Sediment Control Measures will be implemented in accordance with Section 219 of the Specifications & with Site Development Plan SDP- 90-88 ; Drawing 4 , Sediment & Erosion Control.

REVIEWED FOR HOWARD SOIL CONSERVATION DISTRICT AND MEETS TECHNICAL REQUIREMENT.  
*John A. Kuntz* 12/11/89  
SIGNATURE DATE

U.S. SOIL CONSERVATION SERVICE  
This Development Plan is approved for Soil Erosion and Sediment Control by the Howard Soil Conservation District.

APPROVED:  
*Howard S.C.D.* 12/11/89  
HOWARD S.C.D. DATE

QUANTITIES			
ITEM	EST'D	AS BUILT	MATERIAL / SUPPLIER
8" W	347 LF	345 LF	GRIFFIN PIPE PRODUCTS / BELAIR RD. SUPPLY CO. INC.
6" W (WHC)	48 LF	48 LF	GRIFFIN PIPE PRODUCTS / BELAIR RD. SUPPLY CO. INC.
6" V	2 EA	2 EA	MUELLER CO. / BELAIR ROAD SUPPLY CO. INC.
FIRE HYDRANT	2 EA	2 EA	MUELLER CO. / BELAIR ROAD SUPPLY CO. INC.
12" x 8" T.S.&V.	1 EA	1 EA	MUELLER CO. / BELAIR ROAD SUPPLY CO. INC.
12" x 6" T.S.&V.	1 EA	1 EA	MUELLER CO. / BELAIR ROAD SUPPLY CO. INC.

DEPARTMENT OF PUBLIC WORKS  
HOWARD COUNTY, MARYLAND

*James J. ...* 12/15/89  
DIRECTOR OF PUBLIC WORKS DATE

*Robert W. ...* 12-6-89  
CHIEF, BUREAU OF UTILITIES DATE

*... ..* 12/13/89  
CHIEF, LAND DEVELOPMENT DIV. DATE

**CFE** CLARK - FINEPROCK & SACKETT, INC.  
ENGINEERS - PLANNERS - SURVEYORS

7135 MINSTREL WAY COLUMBIA MARYLAND 21045  
(301) 381-7500 BALTO. (301) 621-8100 WASH.



DES: JTR			
DRN: JTR			
CHK: CCM			
DATE: SEP 89	BY NO.	REVISION	DATE

TITLE SHEET

600' SCALE MAP NO. 30 BLOCK NO.

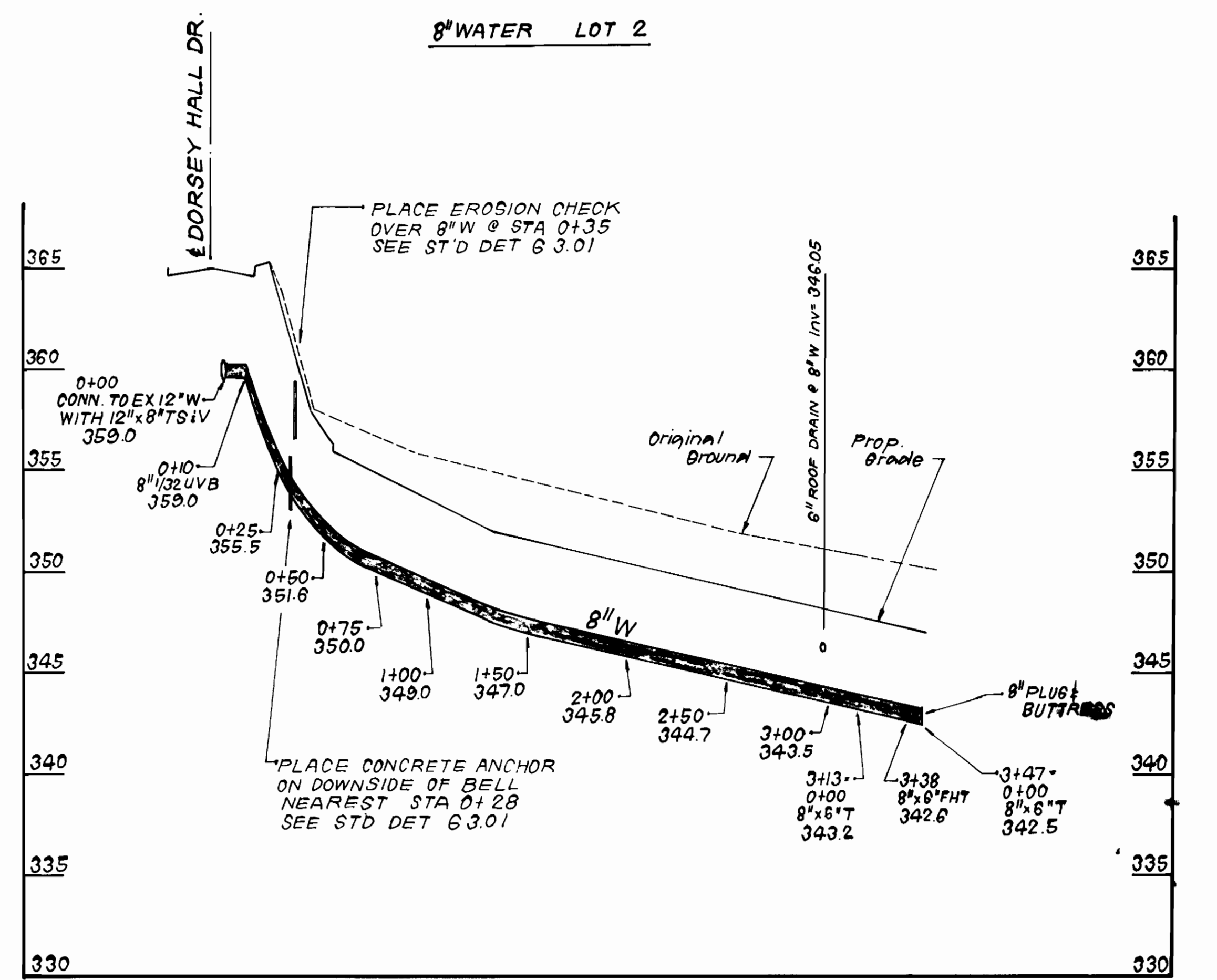
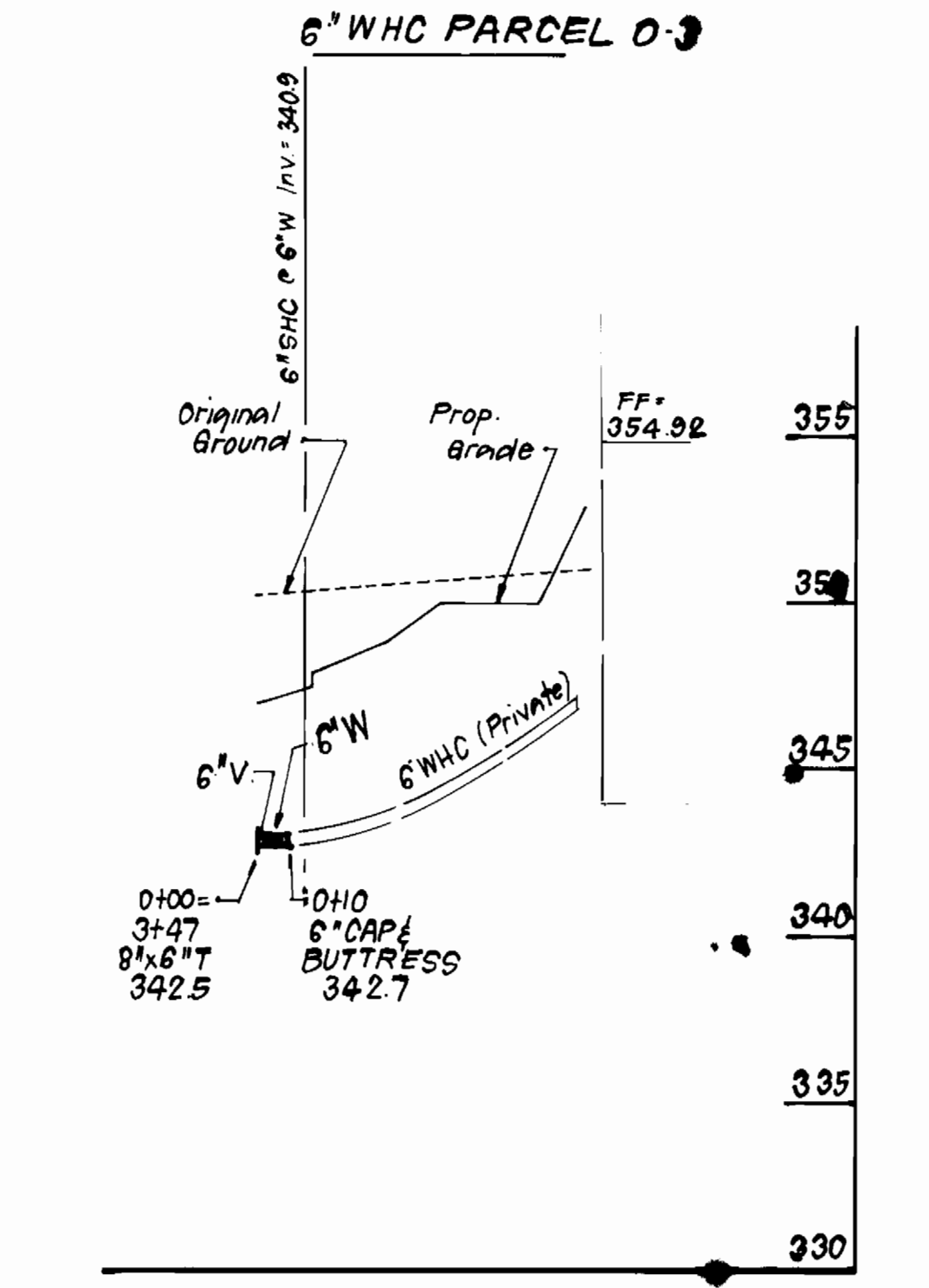
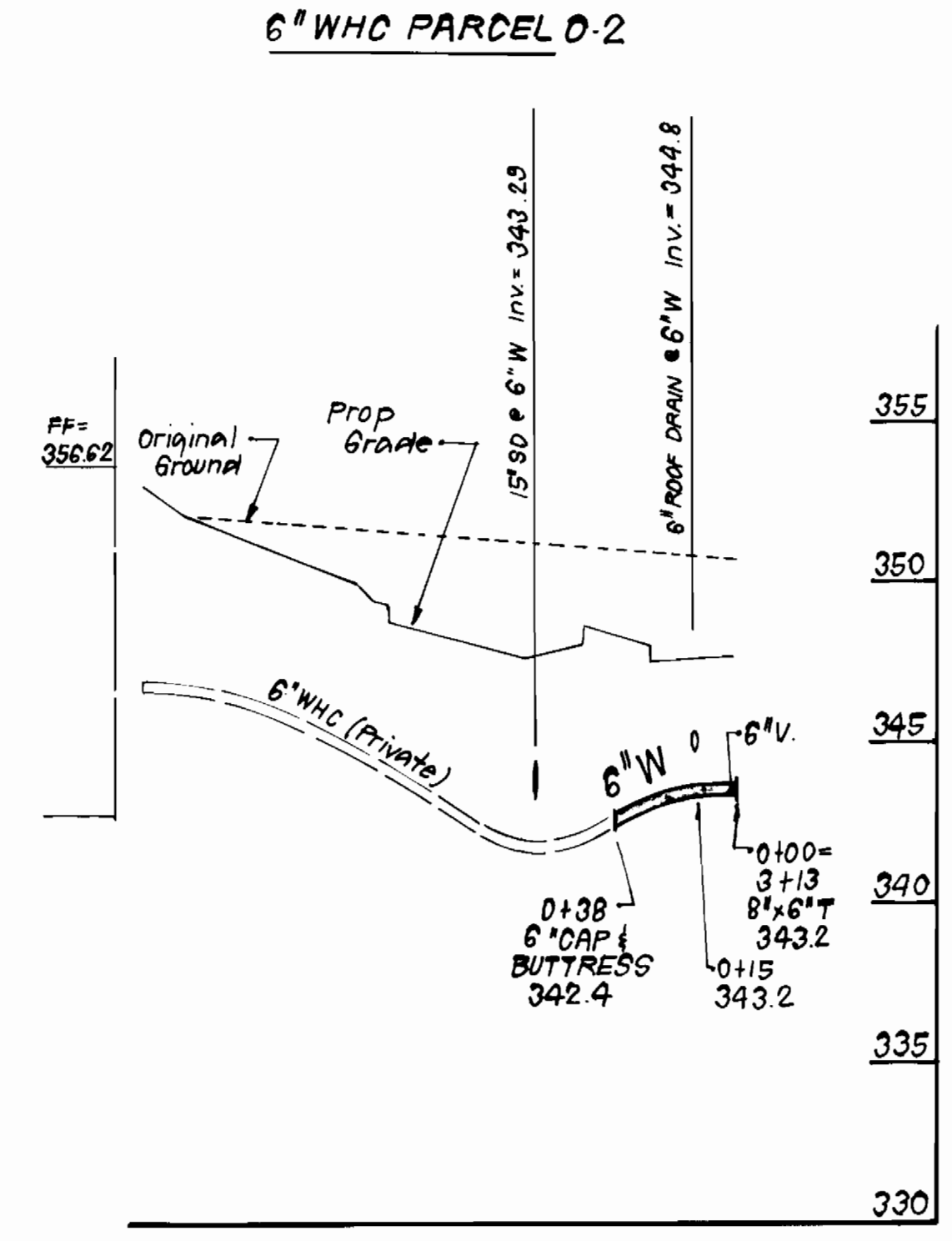
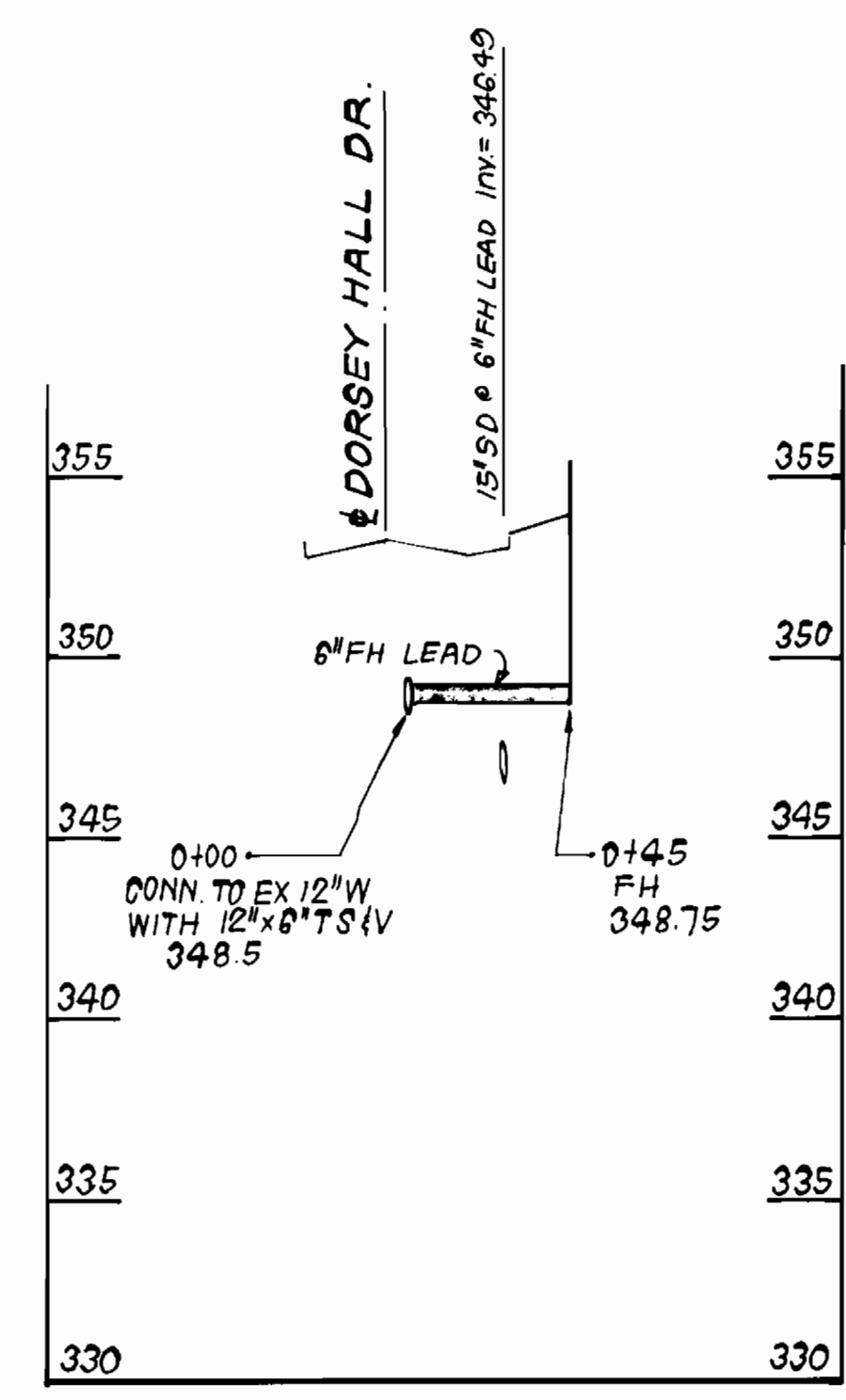
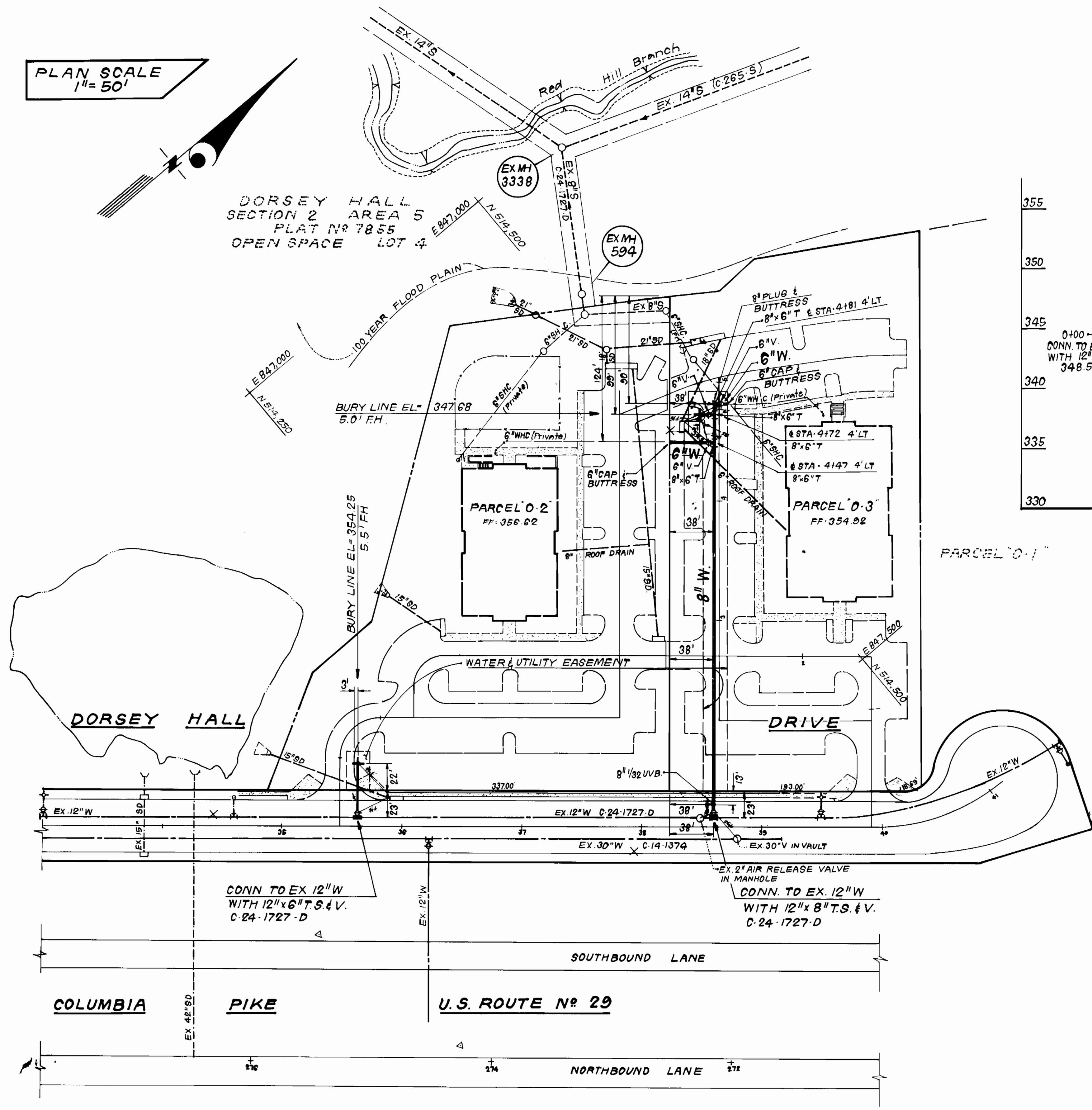
DORSEY HALL  
SECTION 2 AREA 5  
PARCELS 0-2 & 0-3  
2<sup>ND</sup> ELECTION DISTRICT  
CONTRACT NO. 44-1998-D

SCALE AS SHOWN  
SHEET 1 OF 2

WATER AS-BUILT 1/19/90

PLAN SCALE  
1" = 50'

DORSEY HALL  
SECTION 2 AREA 5  
PLAT N° 7855  
OPEN SPACE LOT 4



PROFILE SCALE  
HORIZONTAL: 1" = 50'  
VERTICAL: 1" = 5'

DEPARTMENT OF PUBLIC WORKS  
HOWARD COUNTY, MARYLAND

*James M. ...* 12/3/89  
DIRECTOR OF PUBLIC WORKS DATE

*William R. ...* 12/13/89  
CHIEF, BUREAU OF ENGINEERING DATE

*Paul H. ...* 12/13/89  
CHIEF, LAND DEVELOPMENT DIV. DATE

**CFE** CLARK · FINEPROCK & SACKETT, INC.  
ENGINEERS · PLANNERS · SURVEYORS

7135 MINSTREL WAY COLUMBIA MARYLAND 21045  
(301) 381-7500 BALTO. (301) 621-8100 WASH.



DES: JTR				
DRN: JTR				
CHK: CCM				
DATE: SEP 89	BY	NO.	REVISION	DATE

PLAN & PROFILE OF  
WATER MAINS

600' SCALE MAP NO. 30 BLOCK NO.

DORSEY HALL  
SECTION 2 AREA 5  
PARCELS 0-2 & 0-3  
2 ND ELECTION DISTRICT  
CONTRACT NO. 44-1998-D

SCALE  
AS SHOWN

SHEET  
2 OF 2

WATER 7/10/90 AS-BUILT