

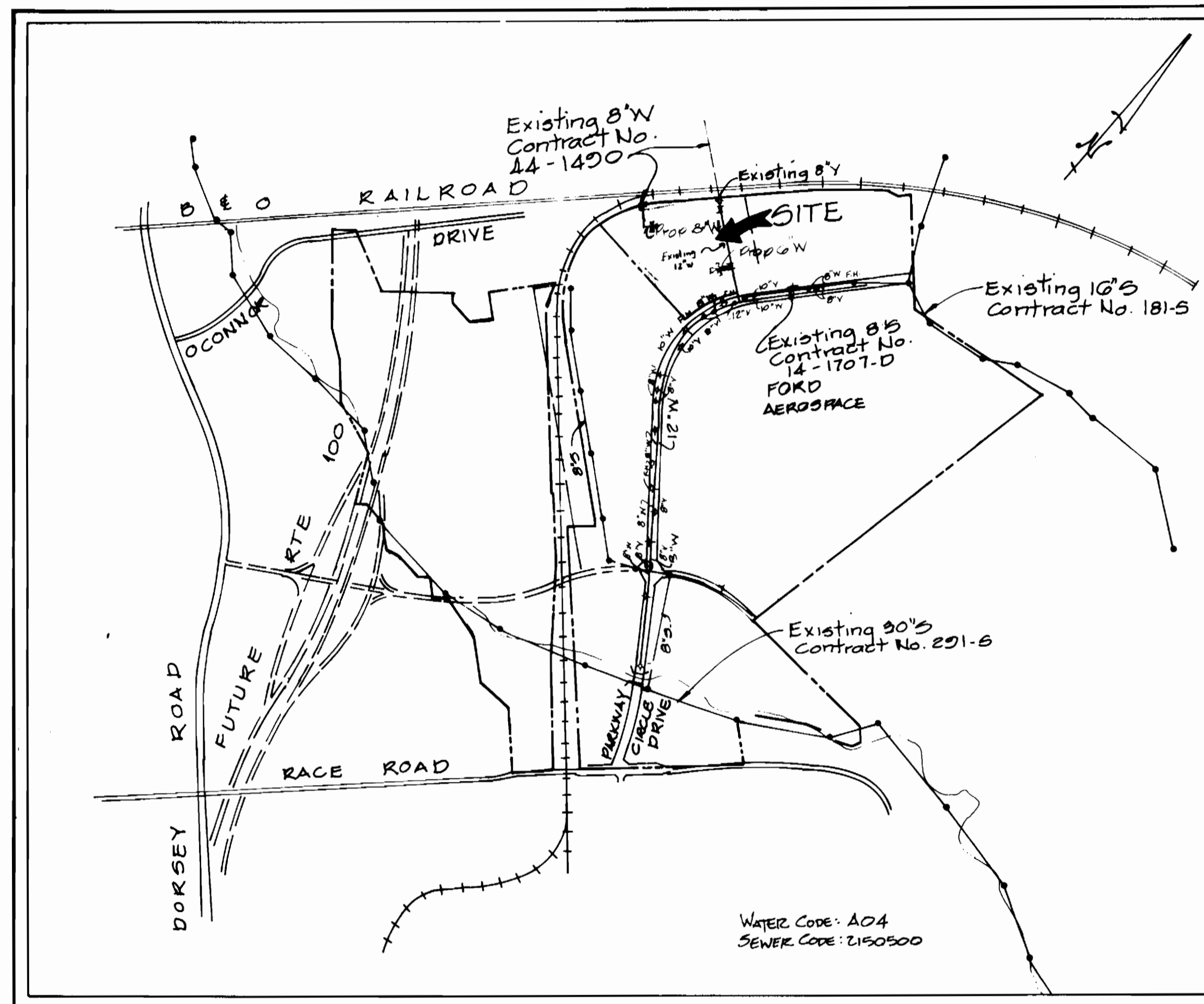
PARKWAY CENTER

SECTION 1 - PARCEL G
 HOWARD COUNTY, MARYLAND
 DEPARTMENT OF PUBLIC WORKS
 CONTRACT NO. 44-1996-D

GENERAL NOTES

- ALL WATER MAIN TO BE D.I.P. UNLESS SHOWN. ALL FITTINGS FOR THE 8" MAIN TO BE D.I.P. COMPACT FITTINGS (SEE NOTE #24).
- TOP OF ALL WATER MAINS TO HAVE A MINIMUM OF 3.5 FT. COVER UNLESS OTHERWISE NOTED.
- VALVES ADJACENT TO TEES SHALL BE STRAPPED TO TEES.
- BLOCK ALL FITTING WITH CONCRETE. SEE STANDARDS BOUND IN SPECIFICATIONS.
- BURY LINE ELEVATIONS ON FIRE HYDRANTS SHALL BE SET TO THE ELEVATIONS SHOWN ON THE DRAWINGS. ALL FIRE HYDRANTS SHALL BE STRAPPED AND OUTFITTED WITH CONCRETE IN ACCORDANCE WITH STANDARDS DETAILS. SOIL AROUND THE FIRE HYDRANT TO BE COMPACTED IN ACCORDANCE WITH SECTION 10.05 & 10.08 OF THE STANDARD SPECIFICATIONS.
- APPROXIMATE LOCATIONS OF EXISTING MAINS ARE SHOWN. THE CONTRACTOR SHALL TAKE ALL NECESSARY PRECAUTIONS TO PROTECT EXISTING MAINS AND SERVICES AND MAINTAIN UNINTERRUPTED SUPPLY. ANY DAMAGE INCURRED SHALL BE REPAIRED IMMEDIATELY TO THE SATISFACTION OF THE ENGINEER. AT THE CONTRACTOR'S EXPENSE.
- ALL HORIZONTAL CONTROLS ARE BASED ON MARYLAND STATE COORDINATES.
- ALL VERTICAL CONTROLS ARE BASED ON U.S.G.S. DATUM.
- ALL PIPE ELEVATIONS SHOWN ARE INVERT ELEVATIONS.
- CLEAR ALL UTILITIES BY A MINIMUM OF 6". CLEAR ALL POLES BY 2' - 0" MINIMUM OR TUNNEL AS REQUIRED. ANY COST INCURRED TO THE CONTRACTOR FOR TUNNELING OR BRACING AT POLES SHALL BE INCLUDED IN UNIT PRICES BID FOR CONSTRUCTION OF MAIN.
- FOR DETAILS NOT SHOWN ON DRAWINGS USE HOWARD COUNTY STANDARD DETAILS.
- CONTRACTOR SHALL LOCATE EXISTING UTILITIES A MINIMUM OF TWO (2) WEEKS IN ADVANCE OF CONSTRUCTION OPERATION IN THE VICINITY OF PROPOSED UTILITIES AT HIS OWN EXPENSE.
- TREES ARE TO BE PROTECTED FROM DAMAGE TO MAXIMUM EXTENT. TREES LOCATED WITHIN THE CONSTRUCTION STRIP ARE NOT TO BE REMOVED OR DAMAGED BY THE CONTRACTOR.
- CONTRACTOR SHALL REMOVE TREES, STUMPS, AND ROOTS ALONG LINE OF EXCAVATION AS DIRECTED BY ENGINEER. PAYMENT FOR SUCH REMOVAL SHALL BE INCLUDED IN THE UNIT PRICE BID FOR CONSTRUCTION OF THE MAIN.
- PLACE REGULATION "MEN WORKING" AND WARNING SIGNS AS REQUIRED TO COMPLY WITH MARYLAND STATE HIGHWAY ADMINISTRATION MANUAL OF TRAFFIC CONTROL FOR HIGHWAY CONSTRUCTION AND MAINTENANCE OPERATIONS.
- CONTRACTOR SHALL NOTIFY THE FOLLOWING UTILITIES OR AGENCIES AT LEAST FIVE (5) WORKING DAYS BEFORE STARTING WORK SHOWN ON THESE PLANS.
 STATE HIGHWAY ADMINISTRATION - 531-5533
 BALTIMORE GAS AND ELECTRIC COMPANY - UNDERGROUND ELECTRIC DISTRIBUTION (CUSTOMER SERVICE 685-8123)
 ENGINEERING, "DAMAGE CONTROL" - 234-5621
 BALTIMORE GAS AND ELECTRIC COMPANY - UNDERGROUND GAS DISTRIBUTION (CUSTOMER SERVICE 685-8123)
 "MISS UTILITY" - 1-553-8188
 CHESAPEAKE & POTOMAC (C&P) TELEPHONE CO. - 725-9976
 AMERICAN TELEPHONE AND TELEGRAPH - CABLE LOCATION DIVISION - 393-3553
 COLONIAL PIPELINE COMPANY - 795-1398
 BUREAU OF UTILITIES HOWARD COUNTY - 992-2366
- FOR MATERIALS AND CONSTRUCTION METHODS USE HOWARD COUNTY STANDARD SPECIFICATIONS.
- ALL WATER HOUSE CONNECTIONS SHALL BE FOR AN INSIDE METER SETTING.
- THE CONTRACTOR SHALL NOT OPERATE ANY WATER MAIN VALVES ON THE EXISTING SYSTEM.
- WATER MAIN AND WATER HOUSE CONNECTION LINES MUST HAVE A MINIMUM OF ONE FOOT SEPARATION FROM THE SANITARY SEWER AND SEWER HOUSE CONNECTIONS AT CROSSINGS. WATER AND SEWER LINES SHALL HAVE A MINIMUM HORIZONTAL SEPARATION OF 18".
- ALL D.I.P. FITTINGS SHALL BE IN ACCORDANCE WITH AWWA SPECIFICATION C-153 DUCTILE IRON COMPACT FITTINGS, 3-INCH THROUGH 12-INCH FOR WATER AND OTHER LIQUIDS.

ITEM	UNIT	QUANTITIES		MATERIAL/SUPPLIER
		ESTIMATED	AS BUILT	
6" WATER	LF	50		
6" x 1/4 BEND	EA	1		
8" WATER		143		
8" x 6" Tee		1		
Fire Hydrant	EA	2		
12" x 6" TEE	EA	1		
8" x 6" TEE	EA	1		



LOCATION MAP
 SCALE: 1" = 600'

TYPE OF BUILDING	MANUFACTURING
NUMBER OF LOTS	1
NUMBER OF WATER HOUSE CONNECTIONS	1
NUMBER OF SEWER HOUSE CONNECTIONS	1
DRAINAGE AREA	DEEP RUN

SEDIMENT CONTROL MEASURES FOR THIS CONTRACT WILL BE IN ACCORDANCE WITH SECT-15 OF THE HOWARD COUNTY DESIGN MANUAL AND STANDARD SPECIFICATIONS FOR SOIL EROSION AND SEDIMENT CONTROL IN DEVELOPING AREAS

REFERENCE: PLAT # 7584
 F-88-55
 SDP-80-41

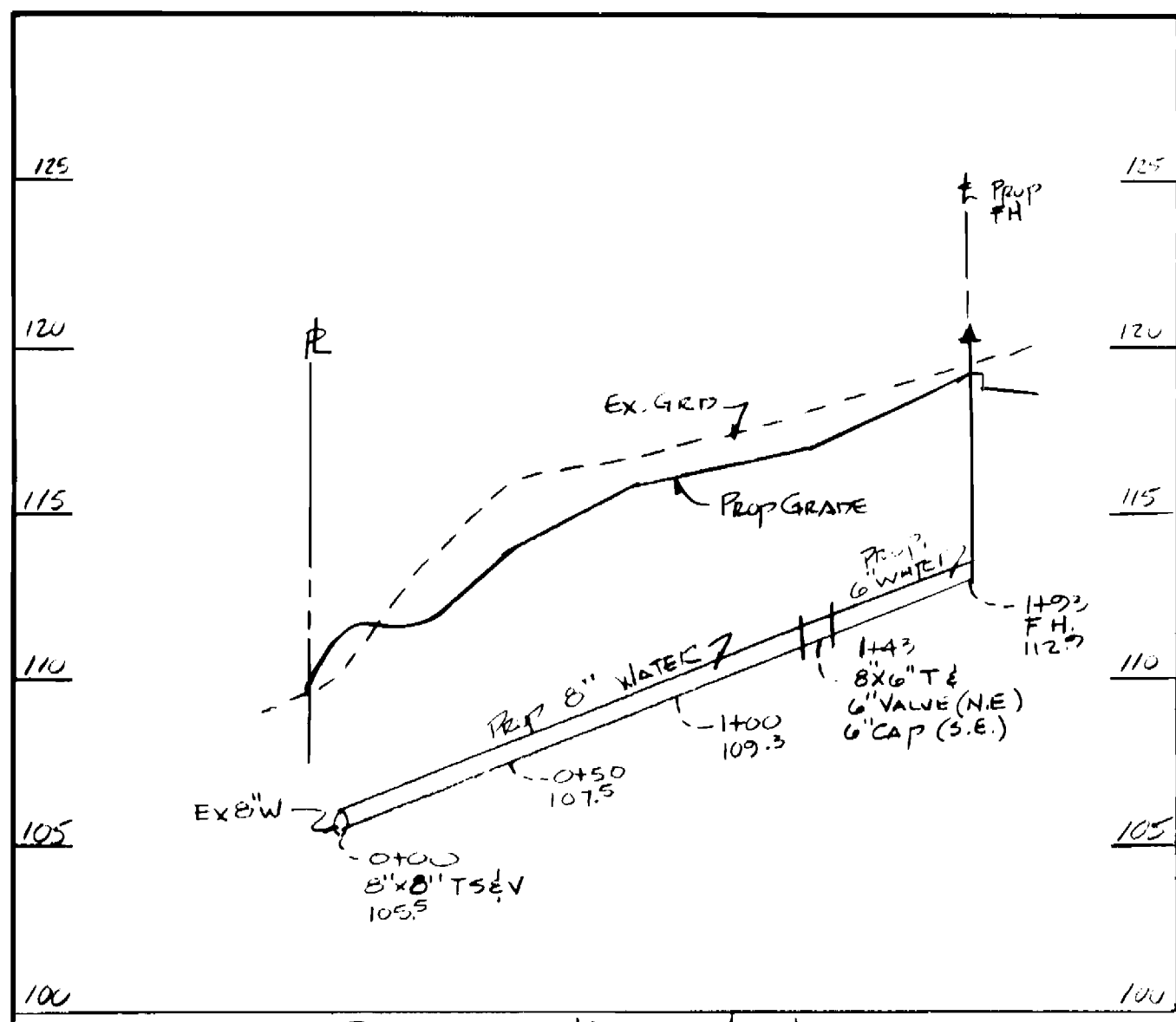
REVIEWED FOR HOWARD COUNTY SOIL CONSERVATION DISTRICT AND MEETS TECHNICAL REQUIREMENTS.

James M. Hahn 12/21/89
 S. Soil Conservation Service Date

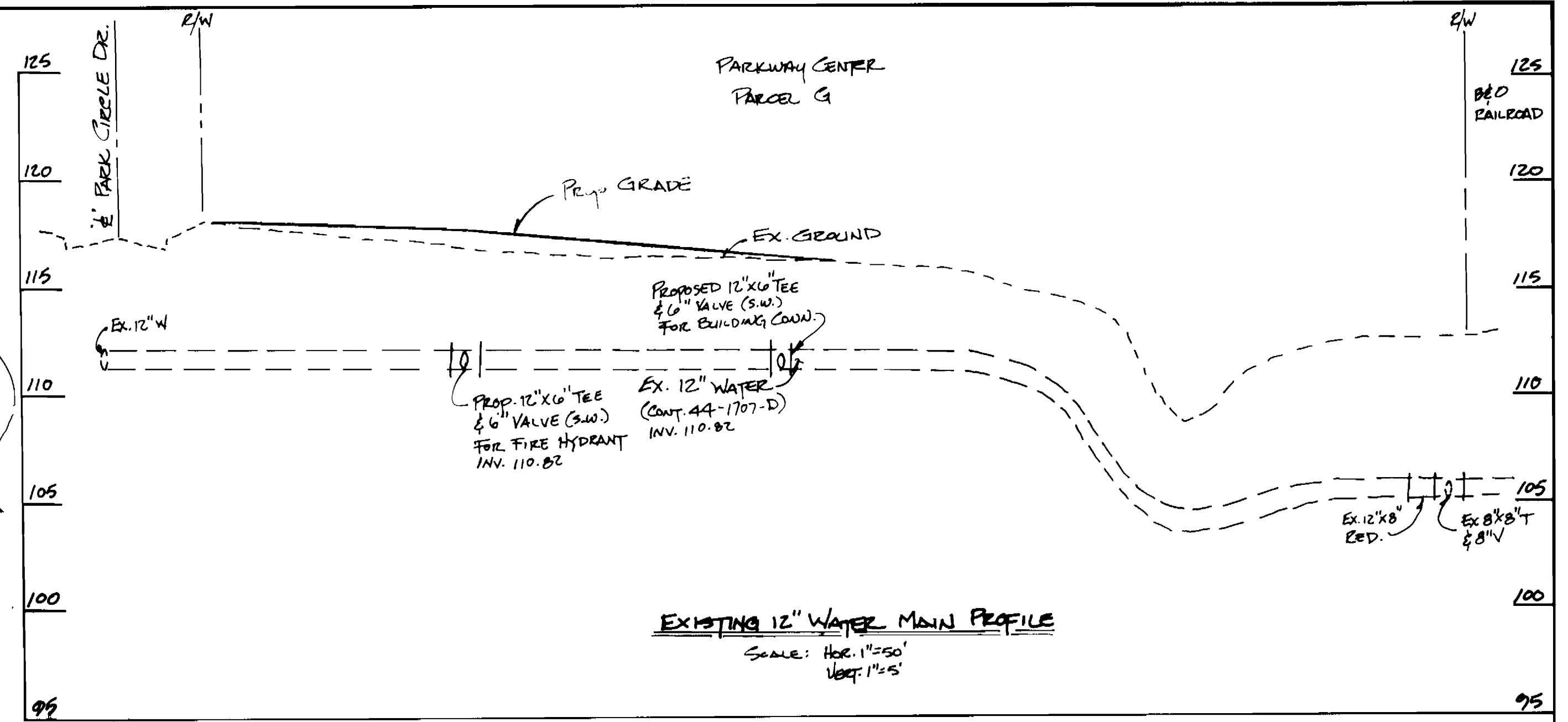
THIS DEVELOPMENT IS APPROVED FOR EROSION AND SEDIMENT CONTROL BY THE HOWARD SOIL CONSERVATION DISTRICT

John R. Robertson 12/20/89
 Howard Soil Conservation District Date

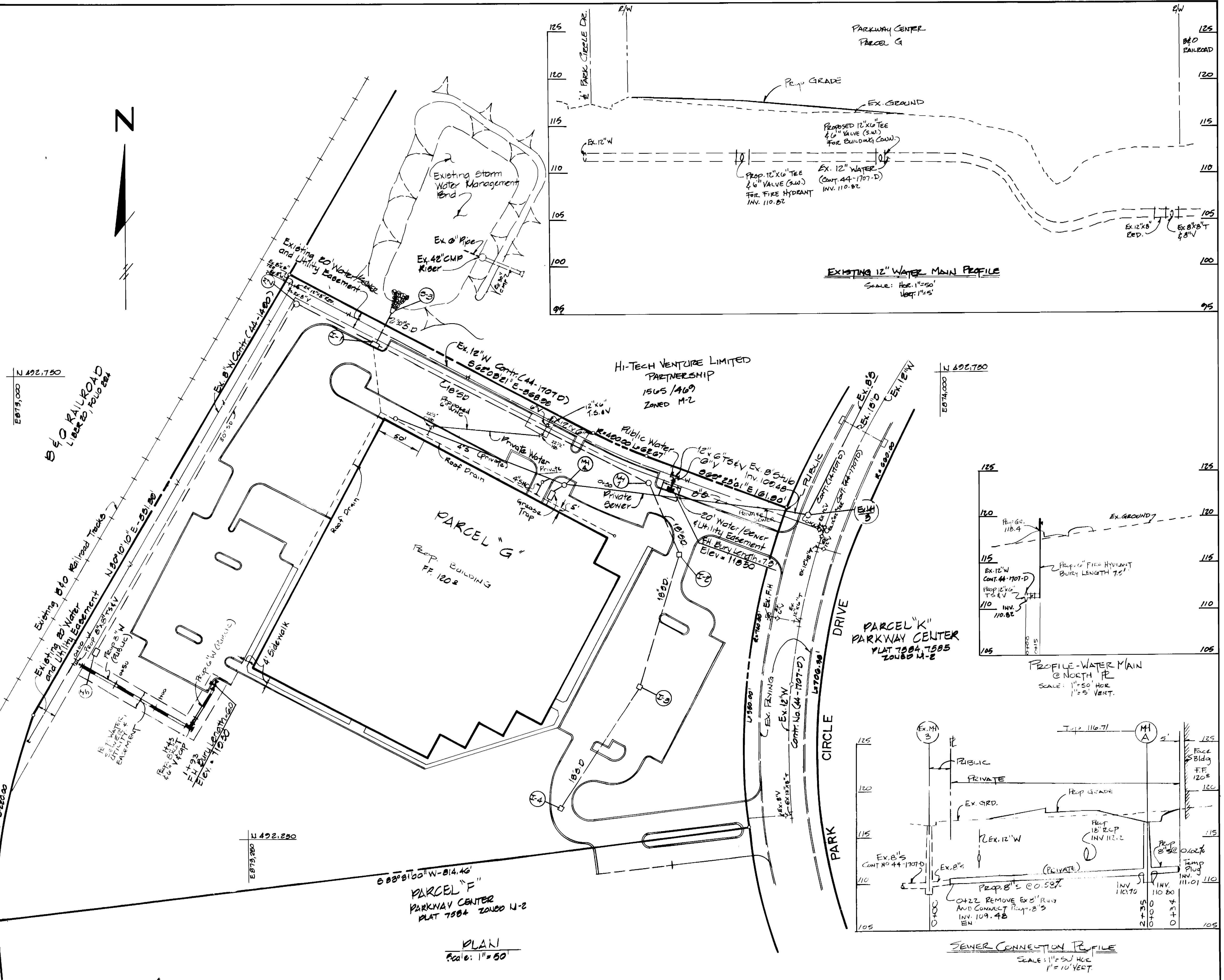
DEPARTMENT OF PUBLIC WORKS HOWARD COUNTY, MARYLAND DIRECTOR OF PUBLIC WORKS 12/26/89 Robert M. Bevington 12-18-89 CHIEF, BUREAU OF UTILITIES DATE	ENGINEERING TECHNOLOGIES ASSOCIATES, INC. ENGINEERS, PLANNERS, SURVEYORS 3450 ELLICOTT CENTER DRIVE SUITE 101 ELLICOTT CITY MD. 20433 (301) 461-9920	DES: _____ DRN: _____ CHK: _____ DATE: _____	TITLE SHEET WATER MAINS	PARKWAY CENTER SECTION 1 PARCEL "G" CONTRACT NO. 44-1996-D 1st. ELECTION DISTRICT T.M. 30 & 44 HOWARD COUNTY, MARYLAND	SCALE AS SHOWN SHEET 1 OF 2
---	--	---	----------------------------	---	--------------------------------



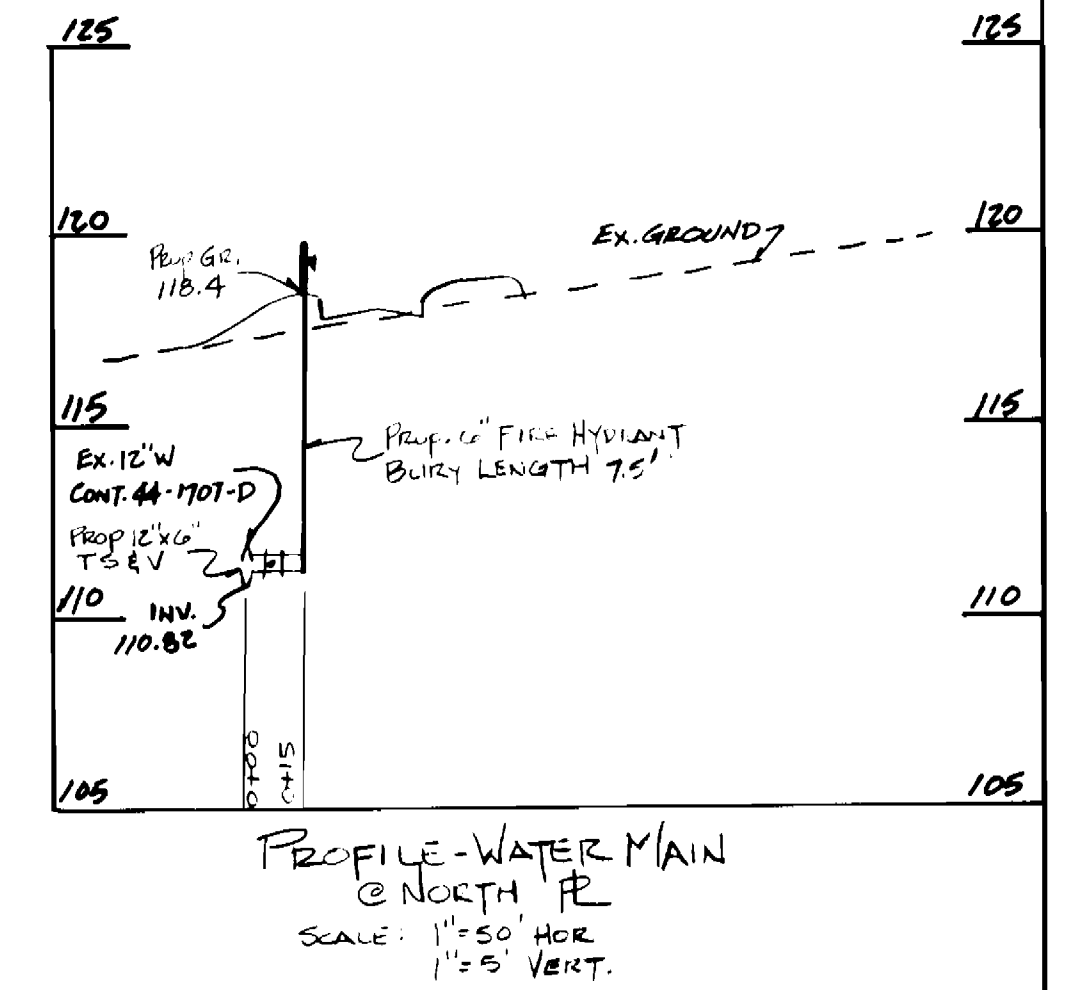
PROFILE - WATER MAIN @ WEST
SCALE: 1" = 50' HOR
1" = 5' VERT



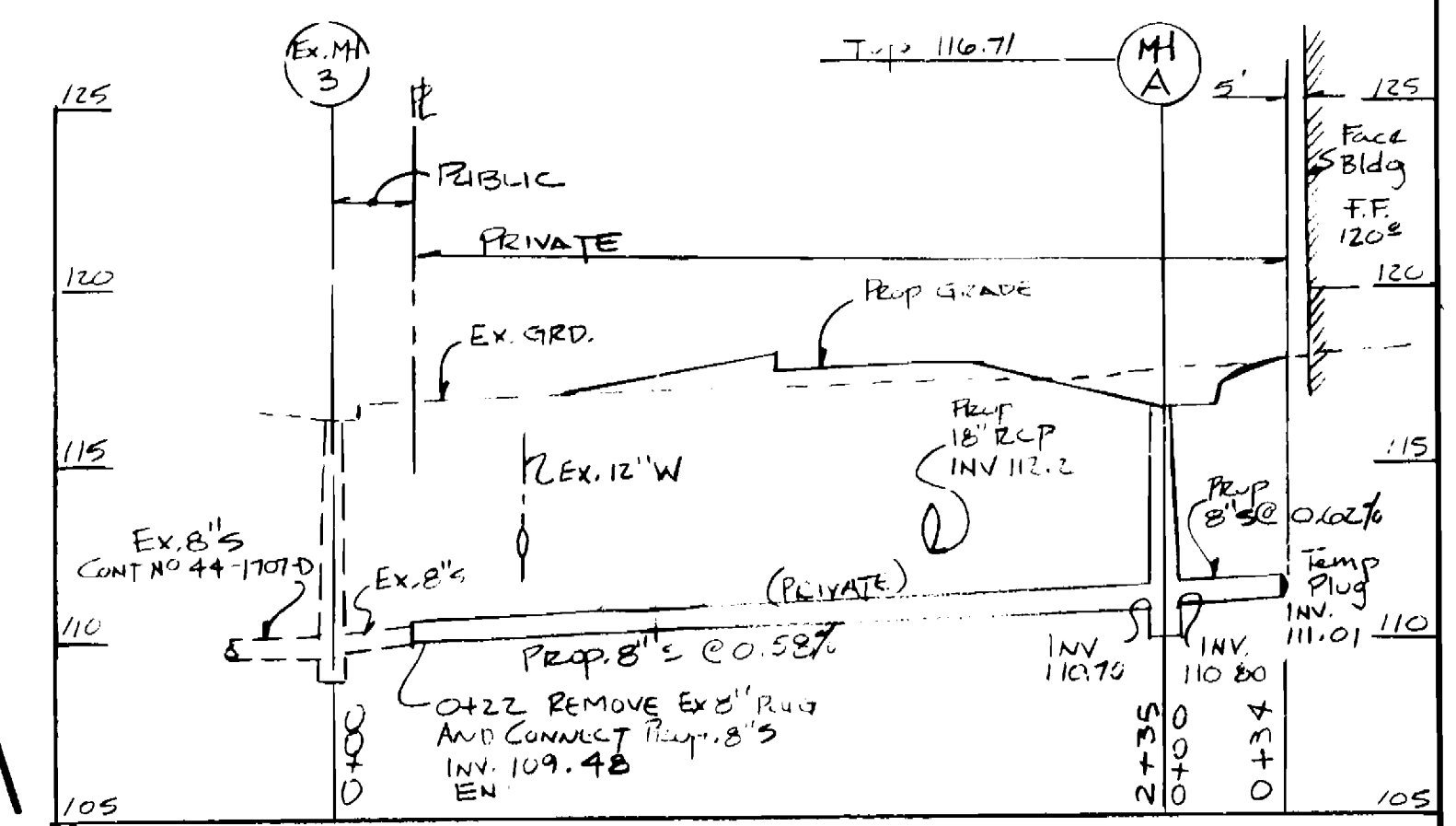
EXISTING 12" WATER MAIN PROFILE
SCALE: HOR: 1" = 50'
VERT: 1" = 5'



PLAN
SCALE: 1" = 50'



PROFILE - WATER MAIN @ NORTH
SCALE: 1" = 50' HOR
1" = 5' VERT



SEWER CONNECTION PROFILE
SCALE: 1" = 50' HOR
1" = 10' VERT

DEPARTMENT OF PUBLIC WORKS
HOWARD COUNTY, MARYLAND

James J. [Signature] 12/26/89
DIRECTOR OF PUBLIC WORKS DATE

Robert [Signature] 12/18/89
CHIEF, BUREAU OF UTILITIES DATE

[Signature] 12/26/89
CHIEF, BUREAU OF ENGINEERING DATE

[Signature] 12/21/89
CHIEF, LAND DEVELOPMENT DIVISION DATE

ENGINEERING TECHNOLOGIES
ASSOCIATES, INC.

ENGINEERS, PLANNERS, SURVEYORS
3408 ELLICOTT CENTER DRIVE SUITE 101
ELLICOTT CITY MD, 21043
(301) 461-9980

DES:	
DRN:	P.M.C.
CHK:	J.A.B.
DATE:	6/89
BY:	
NO.:	
REVISION:	
DATE:	

CONTRACT NO 44-1996D

PLAN
WATER MAINS

600' SCALE MAP NO. 38 BLOCK NO. 21

SCALE AS SHOWN

SHEET 2 OF 2

1st. ELECTION DISTRICT

HOWARD COUNTY, MARYLAND