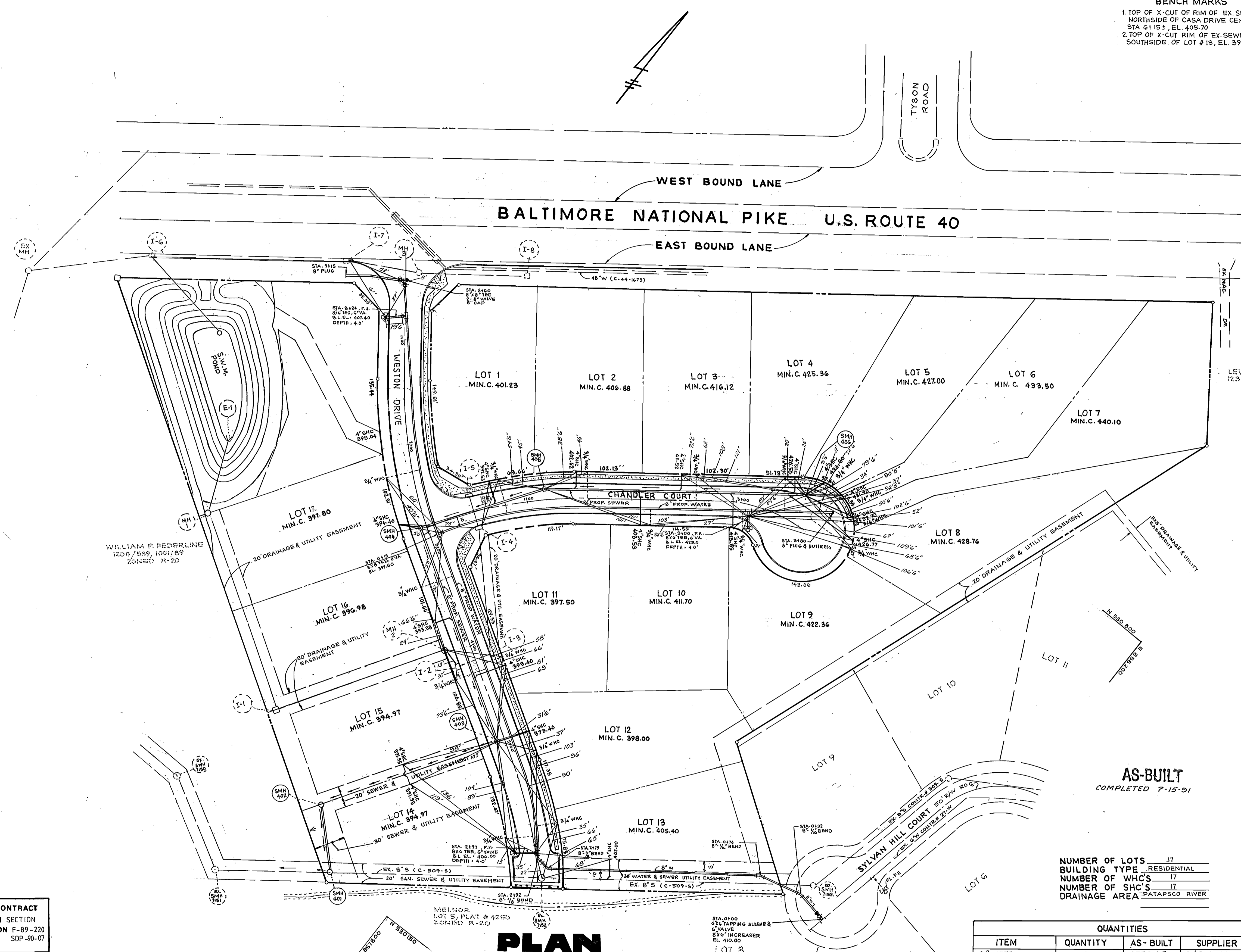
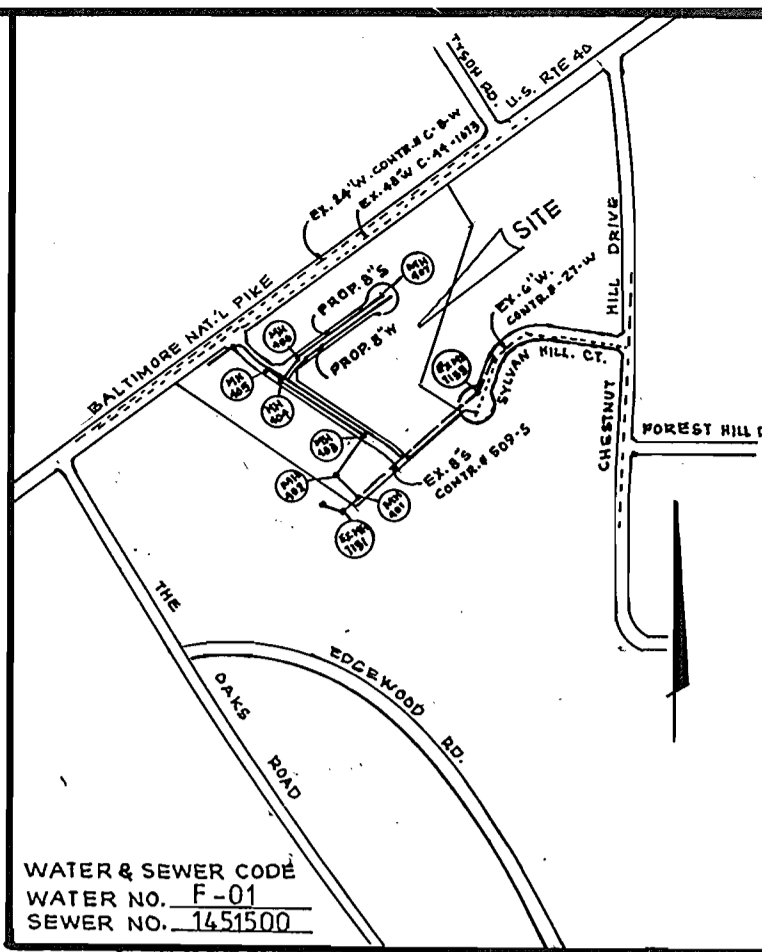


**BENCH MARKS**  
 1. TOP OF X-CUT OF RIM OF EX. SEWER MH # 7152  
 NORTHSIDE OF CASA DRIVE CENTER LINE OF  
 STA 6+15.5, EL. 405.70  
 2. TOP OF X-CUT RIM OF EX. SEWER M.H. # 7151  
 SOUTHSIDE OF LOT # 15, EL. 392.80



**GENERAL NOTES**

- APPROXIMATE LOCATION OF EXISTING MAINS ARE SHOWN. THE CONTRACTOR SHALL TAKE ALL NECESSARY PRECAUTIONS TO PROTECT EXISTING MAINS AND SERVICES AND MAINTAIN UNINTERRUPTED SUPPLY. ANY DAMAGE INCURRED SHALL BE REPAIRED IMMEDIATELY TO THE SATISFACTION OF THE ENGINEER AT THE CONTRACTOR'S EXPENSE.
- ALL HORIZONTAL CONTROLS ARE BASED ON MARYLAND STATE COORDINATES.
- ALL VERTICAL CONTROLS ARE BASED ON U.S.G.S. DATA.
- ALL PIPE ELEVATIONS SHOWN ARE INVERT ELEVATIONS.
- CLEAR ALL UTILITIES BY A MINIMUM OF 6".
- FOR DETAILS NOT SHOWN ON THE DRAWINGS, AND FOR MATERIALS AND CONSTRUCTION METHODS, USE HOWARD COUNTY DESIGN MANUAL, VOL. II, 1989 AMENDMENT. STANDARD SPECIFICATIONS AND DETAILS FOR CONSTRUCTION. THE CONTRACTOR SHALL HAVE A COPY OF VOLUME IV ON THE JOB.
- WHERE TEST PITS HAVE BEEN MADE ON EXISTING UTILITIES, THEY ARE NOTED BY THE SYMBOL AT THE LOCATION OF THE TEST PIT. A NOTE OR NOTES CONTAINING THE RESULTS OF THE TEST PIT OR PITS IS INCLUDED ON THE DRAWINGS. EXISTING UTILITIES IN THE VICINITY OF THE PROPOSED WORK FOR WHICH TEST PITS HAVE NOT BEEN DUG SHALL BE VERIFIED BY THE CONTRACTOR TO HIS OWN SATISFACTION. ANY DAMAGE TO EXISTING FACILITIES DUE TO THE CONTRACTOR'S NEGLIGENCE SHALL BE REPAIRED AT THE CONTRACTOR'S EXPENSE.
- CONTRACTOR SHALL NOTIFY THE FOLLOWING UTILITIES OR AGENCIES AT LEAST FIVE WORKING DAYS BEFORE STARTING WORK SHOWN ON THESE PLANS:
  - STATE HIGHWAY ADMINISTRATION : 531-5533
  - BALTIMORE GAS & ELECTRIC CO. - CONTRACTOR SERVICES: 561-2585
  - BALTIMORE GAS & ELECTRIC CO. UNDERGROUND DAMAGE CONTROL: 234-5621
  - BALTIMORE GAS & ELECTRIC CO. TROUBLE SHOOTING: 298-9013
  - MISS UTILITY: 1-559-0100
  - COLONIAL PIPELINE COMPANY: 795-1390
  - BUREAU OF UTILITIES, HOWARD COUNTY DEPARTMENT OF PUBLIC WORKS: 992-2366
- TREES AND SHRUBS ARE TO BE PROTECTED FROM DAMAGE TO MAXIMUM EXTENT. TREES AND SHRUBS LOCATED WITHIN THE CONSTRUCTION STRIP ARE NOT TO BE REMOVED OR DAMAGED BY THE CONTRACTOR.
- CONTRACTOR SHALL REMOVE TREES, STUMPS AND ROOTS ALONG LINE OF EXCAVATION. PAYMENT FOR SUCH REMOVAL SHALL BE INCLUDED IN THE UNIT PRICE BID FOR CONSTRUCTION OF THE MAIN.
- ALL WATER MAINS TO BE D.I.P. CLASS 52 UNLESS OTHERWISE NOTED.
- TOPS OF ALL WATER MAINS TO HAVE A MINIMUM OF 3-1/2' COVER UNLESS OTHERWISE NOTED.
- VALVES ADJACENT TO TEES SHALL BE STRAPPED TO TEES.
- ALL FITTINGS SHALL BE BUTTRESSED OR ANCHORED WITH CONCRETE IN ACCORDANCE WITH THE STANDARD DETAILS UNLESS OTHERWISE PROVIDED FOR ON THE DRAWINGS.
- FIRE HYDRANTS SHALL BE SET TO THE BURY LINE ELEVATIONS SHOWN ON THE DRAWINGS. ALL FIRE HYDRANTS SHALL BE STRAPPED AND BUTTRESSED WITH CONCRETE IN ACCORDANCE WITH STANDARD DETAILS. SOIL AROUND THE FIRE HYDRANT SHALL BE COMPACTED IN ACCORDANCE WITH SECTION 1000-03 & 1005-09 OF THE STANDARD SPECIFICATIONS.
- THE CONTRACTOR SHALL NOT OPERATE ANY WATER MAIN VALVES ON THE EXISTING WATER SYSTEM.
- ALL WATER HOUSE CONNECTIONS SHALL BE FOR INSIDE METER SETTING, UNLESS OTHERWISE NOTED ON THE PLANS OR IN THE SPECIFICATIONS. (STD. DETAIL W.3.21).
- WATER MAINS AND WATER HOUSE CONNECTION LINES MUST BE PLACED SO AS TO HAVE AT LEAST ONE (1) FOOT SEPARATION FROM THE SEWER MAIN OR SEWER HOUSE CONNECTION AS THEY PASS ABOUT IT.
- MANHOLES DESIGNATED W.T. IN PLAN AND PROFILE SHALL HAVE WATER-TIGHT FRAME AND COVERS STANDARD DETAIL GS.52 WHERE WATERTIGHT MANHOLE FRAME AND COVER IS USED, SET TOP OF FRAME 1'-6" ABOVE FINISHED GRADE UNLESS OTHERWISE NOTED ON THE DRAWINGS.
- ALL SEWER MAINS SHALL BE C.S.P.X., R.C.S.P., V.C.P.X., OR P.V.C. UNLESS OTHERWISE NOTED.
- THE CONTRACTOR SHALL PROVIDE A JOINT IN ALL SEWER MAINS WITHIN 2'-0" OF EXTERIOR MANHOLE WALL.
- ALL MANHOLES SHALL BE 4'-0" INSIDE DIAMETER UNLESS OTHERWISE NOTED.
- MANHOLES SHOWN WITH 12" AND 16" WALLS ARE FOR BRICK MANHOLES ONLY.
- MANHOLES LOCATED WITHIN PROPOSED ROADWAY SHALL HAVE STANDARD HEAVY TRAFFIC MANHOLE FRAME AND COVER, STANDARD DETAIL GS.51.
- ALL WATER HOUSE CONN. ARE FOR INSIDE METER SETTING.
- ALL D.I.P. FITTINGS SHALL BE IN ACCORDANCE WITH A.W.W.A. SPECIFICATION C-153 DUCTILE IRON COMPACT FITTING, 3" THROUGH 12" FOR WATER AND OTHER LIQUIDS.

STATE HIGHWAY ADMINISTRATION : 531-5533  
 BALTIMORE GAS & ELECTRIC CO. - CONTRACTOR SERVICES: 561-2585  
 BALTIMORE GAS & ELECTRIC CO. UNDERGROUND DAMAGE CONTROL: 234-5621  
 BALTIMORE GAS & ELECTRIC CO. TROUBLE SHOOTING: 298-9013  
 MISS UTILITY: 1-559-0100  
 COLONIAL PIPELINE COMPANY: 795-1390  
 BUREAU OF UTILITIES, HOWARD COUNTY DEPARTMENT OF PUBLIC WORKS: 992-2366

NUMBER OF LOTS	17
BUILDING TYPE	RESIDENTIAL
NUMBER OF WH'S	17
NUMBER OF SH'S	17
DRAINAGE AREA	PATAPSCO RIVER

QUANTITIES			
ITEM	QUANTITY	AS-BUILT	SUPPLIER
8" WATER	1295 L.F.	1330 L.F.	A&P SUPPLIERS
6" WATER	40 L.F.	54 L.F.	"
8" 1/8" BEND	2	2	"
3/4" W.H.C.	482 L.F.	540 L.F.	"
6" VALVE	3	3	"
6" VALVE	4	4	"
6" INCREASER	1	1	"
FIRE HYDRANT	3	3	"
8" SEWER	836 L.F.	834.8 L.F.	"
4" S.H.C.	471 L.F.	432.5 L.F.	"
MANHOLES	6	6	ATLANTIC CONCRETE
8" 1/16" BEND	2	2	A&P SUPPLIERS

**PLAN**  
 SCALE: 1"=50'

SEDIMENT CONTROL MEASURES FROM THIS CONTRACT WILL BE IMPLEMENTED IN ACCORDANCE WITH SECTION 219 OF THE SPECIFICATIONS AND AS SHOWN ON F-89-220 SOP-90-07

HOWARD SOIL CONSERVATION DISTRICT REVIEWED FOR HOWARD SOIL CONSERVATION DISTRICT AND MEETS TECHNICAL REQUIREMENTS

1-4-90  
 DATE

HOWARD SOIL CONSERVATION SERVICE

THIS PLAN IS APPROVED FOR SOIL EROSION AND SEDIMENT CONTROL BY THE HOWARD SOIL CONSERVATION DISTRICT

1/2/90  
 DATE

HOWARD SOIL CONSERVATION DISTRICT

**DEPARTMENT OF PUBLIC WORKS**  
 HOWARD COUNTY, MARYLAND

1-8-90  
 DATE

3217 Corporate Court  
 Ellicott City, MD 21043  
 (301) 750-9003

**SEDGHI & ASSOCIATES, LTD.**  
 Engineers • Site Planners • Surveyors

12-28-89  
 DATE

1/8/90  
 DATE



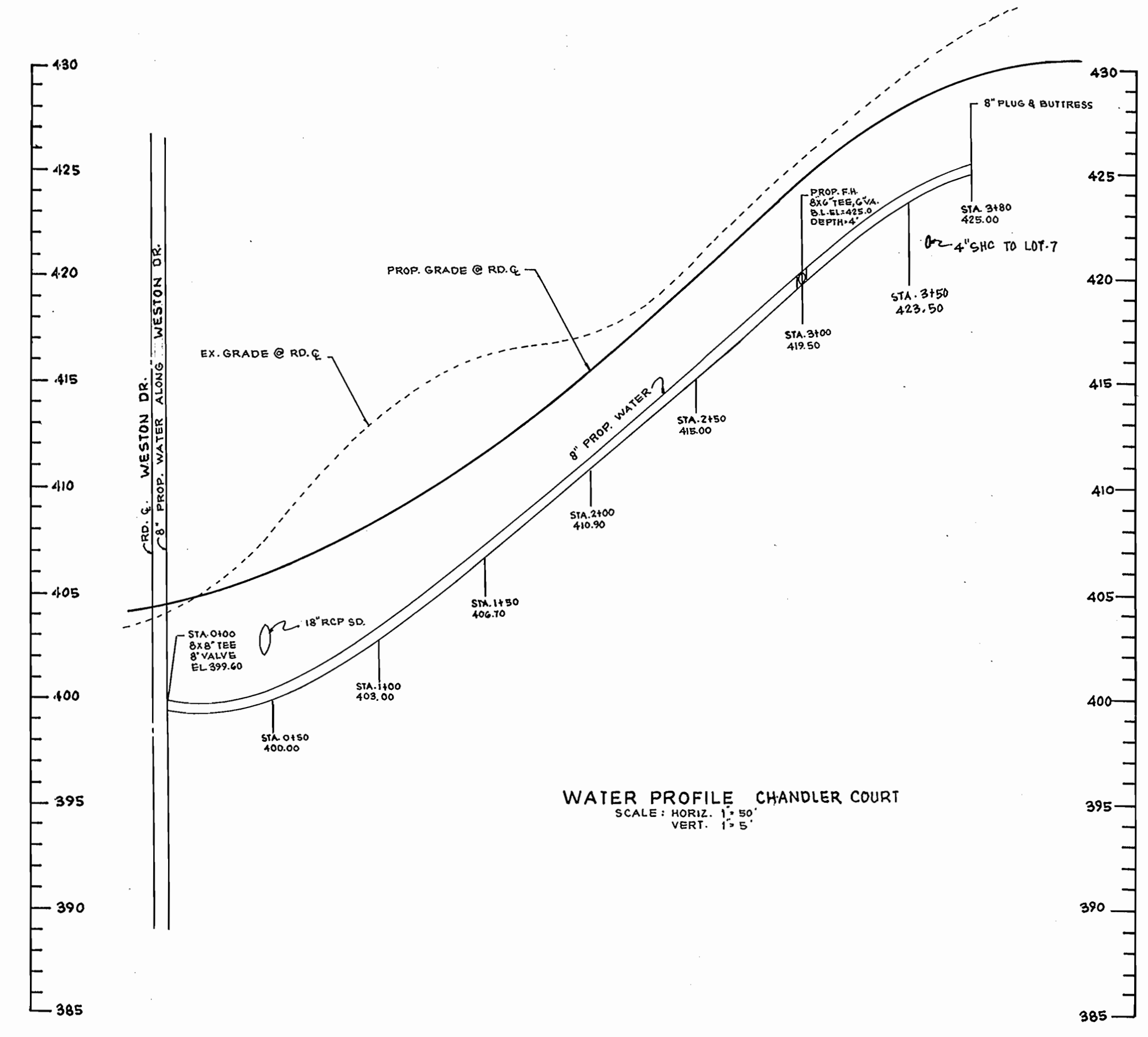
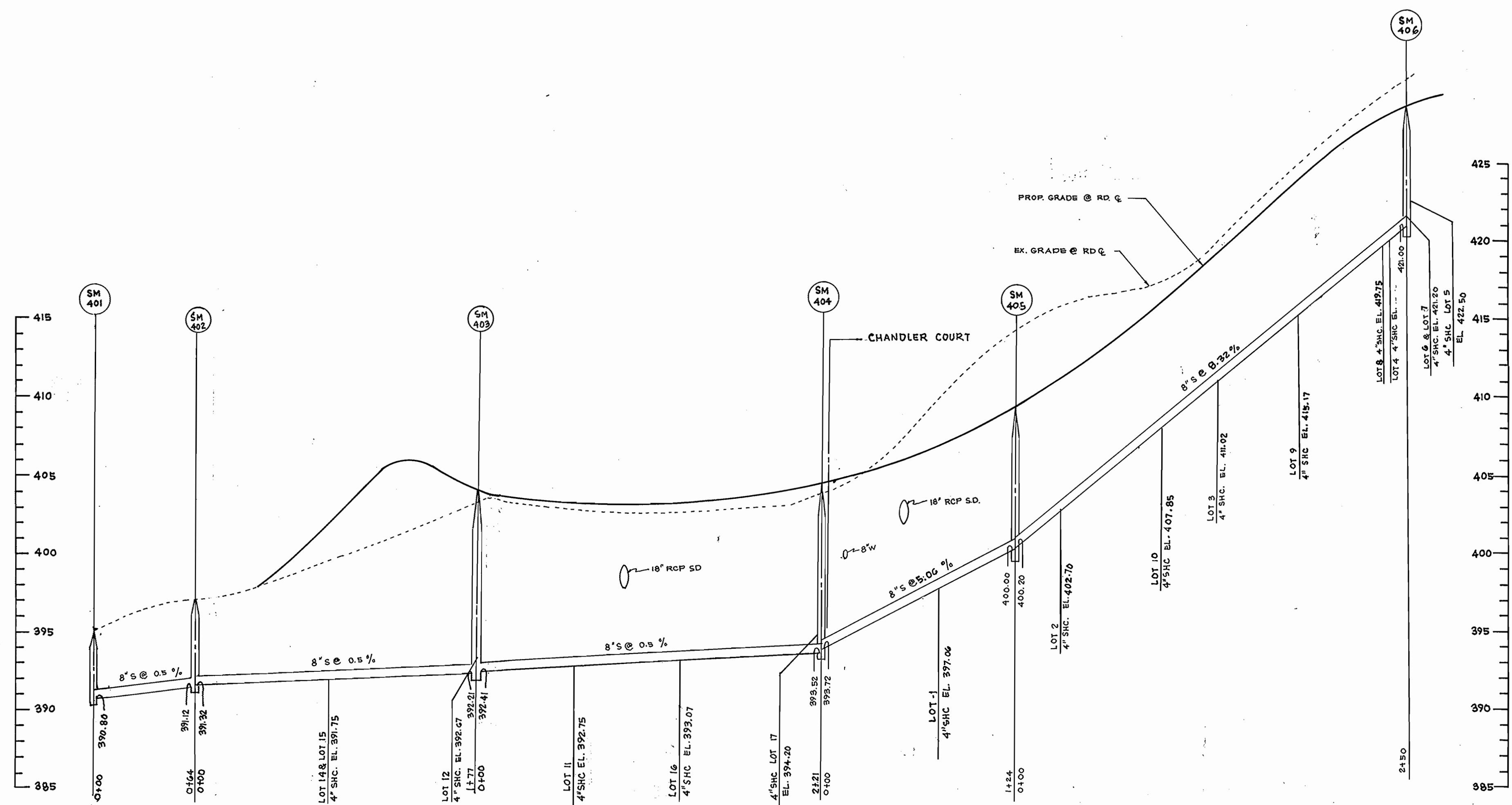
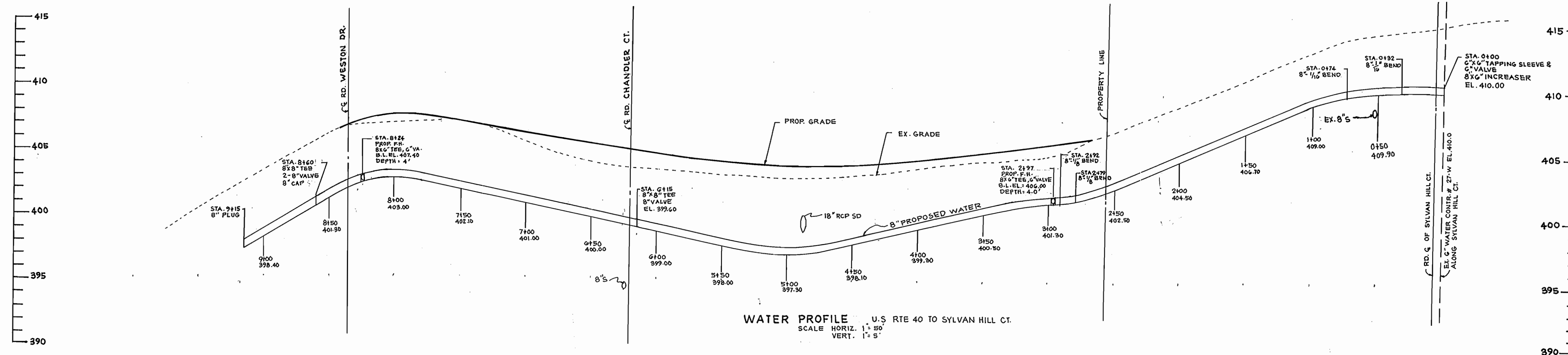
DESIGN BY:	V.S.	1	REVISE LAYOUT & FRONT FOOTAGE	7-24-90
DRAWN BY:	V.S.		REVISE SEWER HOUSE CONN. EL. & CELLAR EL.	
CHECKED BY:	V.S.	1	REALIGN SEWER MAIN B/W MH 401 & 403	
DATE:	M.S.		REVISION OF SUBDIVISION NAME & ROAD NAMES	8-16-91
BY NO.			REVISION	DATE

**WATER & SEWER PLAN**  
 CONTRACT NO. 14-1983-D

CHESTNUT RIDGE  
 LOTS 1 TO 17  
 TAX MAP 18 PARCEL G2  
 2ND ELECTION DISTRICT  
 HOWARD COUNTY, MARYLAND

DEVELOPER  
 40 WEST BUILDERS  
 1007 LESLIE AVENUE  
 CATONSVILLE, MD. 21228

SCALE AS SHOWN  
 SHEET 1 OF 2



SEDIMENT CONTROL MEASURES FROM THIS CONTRACT WILL BE IMPLEMENTED IN ACCORDANCE WITH SECTION 219 OF THE SPECIFICATIONS AND AS SHOWN ON F-89-220 SDP-90-07

HOWARD SOIL CONSERVATION DISTRICT REVIEWED FOR HOWARD SOIL CONSERVATION DISTRICT AND MEETS TECHNICAL REQUIREMENTS

U.S. SOIL CONSERVATION SERVICE DATE

THIS PLAN IS APPROVED FOR SOIL EROSION AND SEDIMENT CONTROL BY THE HOWARD SOIL CONSERVATION DISTRICT

HOWARD SOIL CONSERVATION DISTRICT DATE

**SEWER PROFILE WESTON DR. & CHANDLER CT.**  
 SCALE: HORIZ. 1" = 50' VERT. 1" = 5'



**SEDGHI & ASSOCIATES LTD.**  
 ENGINEERS • SITE PLANNERS • SURVEYORS  
 3217 CORPORATE COURT  
 ELLICOTT CITY, MD. 21043  
 (301) 760-9003

DES	V.S	1	REVISION OF SEWER PROFILE	07-25-70
DRN	V.S		REVISION OF SUBDIVISION NAME & ROAD NAMES	8-16-71
CHK	M.S			
DATE	BY	NO	REVISION	DATE

**WATER & SEWER PROFILES**  
 CONTRACT NO. 14-1983-D

**CHESTNUT RIDGE**  
 LOTS 1 TO 17  
 TAX MAP 18 PARCEL G2  
 2ND ELECTION DISTRICT  
 HOWARD COUNTY, MARYLAND

**DEVELOPER**  
 40 WEST BUILDERS  
 1007 LESLIE AVENUE  
 CATONSVILLE, MD. 21228

**DEPARTMENT OF PUBLIC WORKS**  
 HOWARD COUNTY, MARYLAND

James H. ... 1/8/90 DATE  
 DIRECTOR OF PUBLIC WORKS

Michael A. ... 12-28-89 DATE  
 CHIEF BUREAU OF UTILITIES

... 1-8-90 DATE  
 CHIEF BUREAU OF ENGINEERING

... 1/8/90 DATE  
 CHIEF LAND DEVELOPMENT DIVISION

SCALE  
 AS  
 SHOWN

SHEET  
 2 OF 2