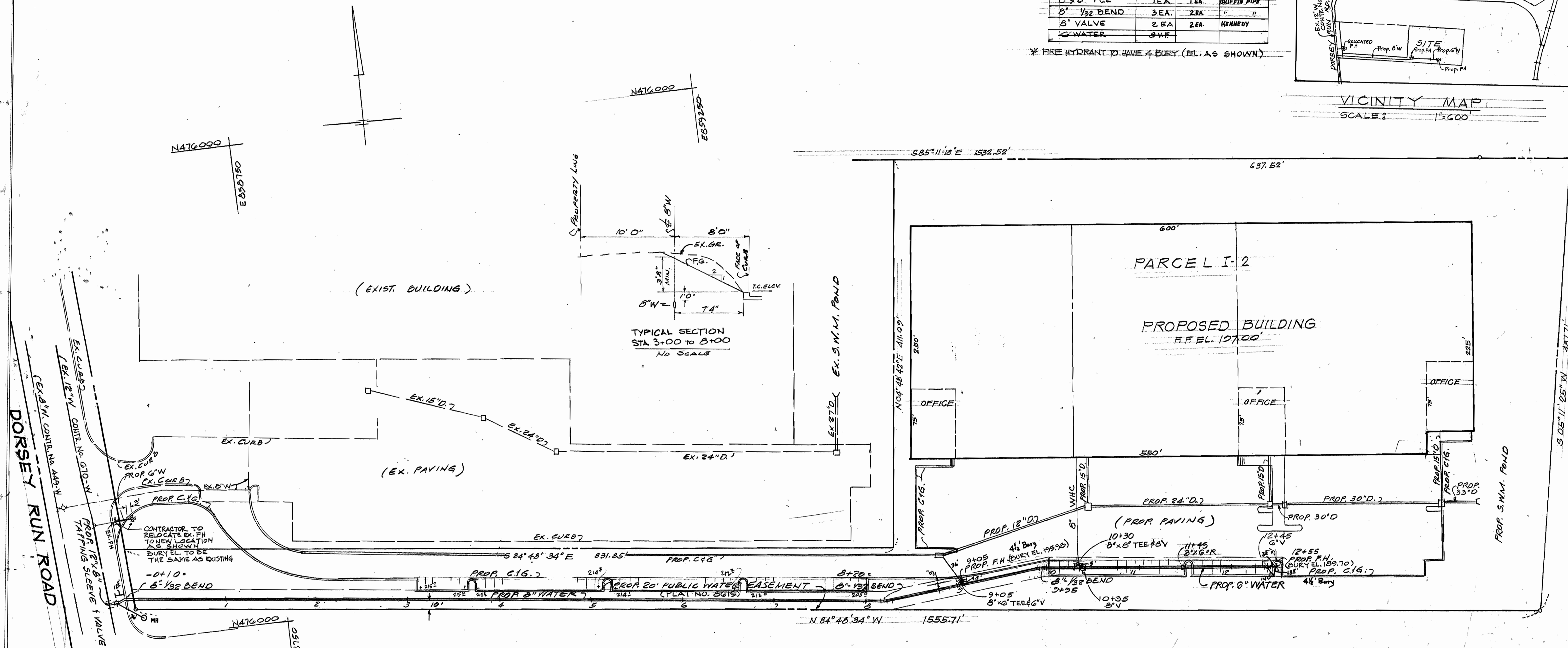
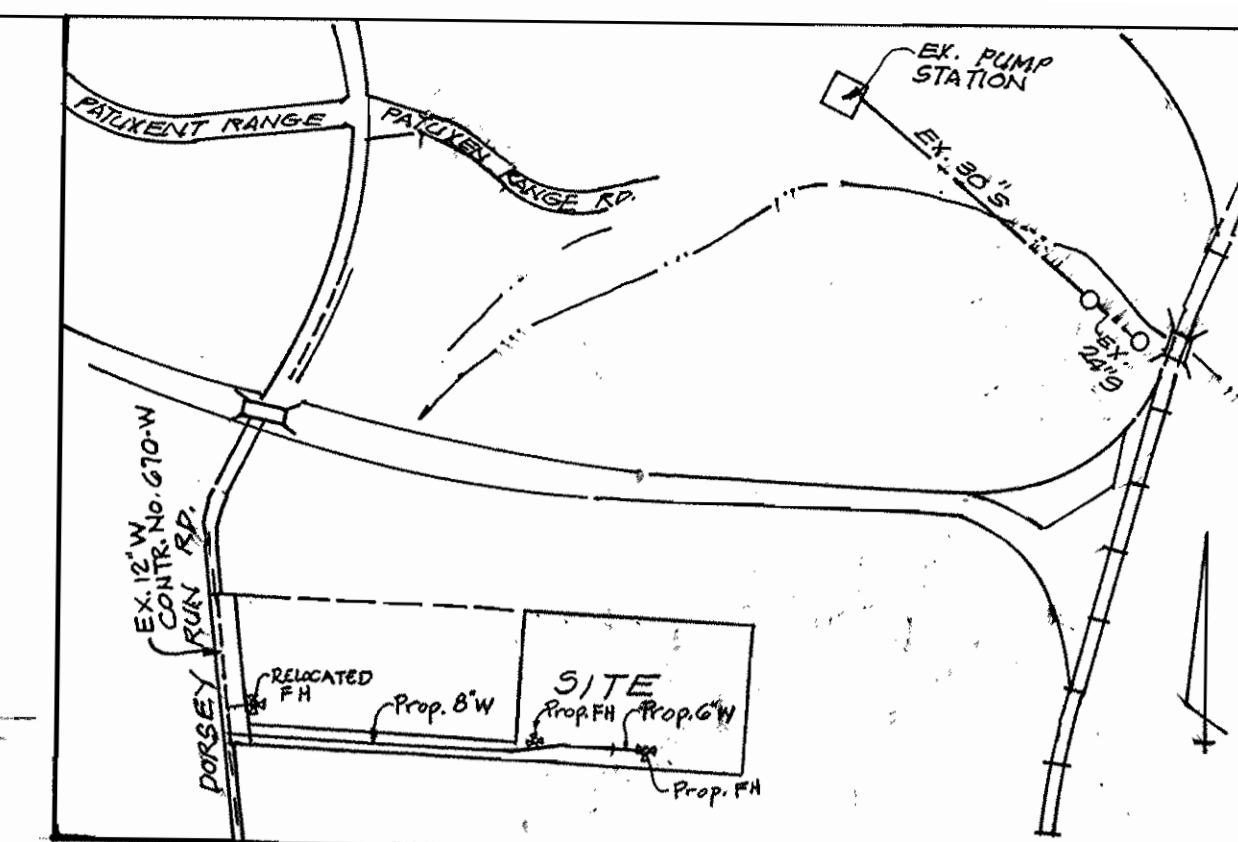


DRAINAGE AREA - 9.415 AC.
 W.H.C. = 1
 WATER CODE - 802

QUANTITIES			
ITEM	EST'D	AS BUILT	SUPPLIER
8" WATER	1185 LF	1171 LF.	GRIFFIN PIPE
6" WATER	130 LF	100 LF.	"
FIRE HYDRANT	2 EA	2 EA.	KENNEDY
G.F.H. VALVE	2 EA	2 EA.	"
8" X 6" TEE	1 EA	1 EA.	GRIFFIN PIPE
12" X 8" TAP, SW & VAL.	1 EA.	1 EA.	CLOW
6" X 8" TEE	1 EA.	1 EA.	GRIFFIN PIPE
8" 1/32 BEND	3 EA.	2 EA.	"
8" VALVE	2 EA	2 EA.	KENNEDY
G.WATER	3 WF		

* FIRE HYDRANT TO HAVE 4 BURY (EL. AS SHOWN)



TYPICAL SECTION
 STA 3+00 TO 3+00
 NO SCALE

GENERAL NOTES

- APPROXIMATE LOCATION OF EXIST. MAINS ARE SHOWN. THE CONTRACTOR SHALL TAKE ALL NECESSARY PRECAUTIONS TO PROTECT EXIST. MAIN AND SERVICES MAINTAIN UNINTERRUPTED SUPPLY AND DAMAGE INCURRED SHALL BE REPAIRED IMMEDIATELY TO THE SATISFACTION OF THE ENGINEER AT THE CONTRACTOR'S EXPENSES.
- ALL PIPE ELEVATIONS SHOWN ARE INVERT ELEVATIONS.
- FOR DETAILS NOT SHOWN ON THE DRAWING, USE HOWARD COUNTY STANDARD DETAILS.
- FOR MATERIAL AND CONSTRUCTION METHODS, USE HOWARD COUNTY STANDARD SPECIFICATION.
- CONTRACTOR SHALL LOCATE EXIST. UTILITIES A MINIMUM OF TWO (2) FEET IN ADVANCE OF CONSTRUCTION OPERATIONS IN THE VICINITY OF PROPOSED UTILITIES AT HIS OWN EXPENSES.
- CONTRACTOR SHALL NOTIFY THE FOLLOWING UTILITIES OR AGENCIES AT LEAST FIVE (5) WORKING DAYS BEFORE STARTING WORK SHOWN ON THESE PLANS.
 BALTO. GAS & ELECTRIC CO. - UNDERGROUND GAS DISTRIBUTION CUSTOMER SERVICE = 685-0123
 BALTO. GAS & ELECTRIC CO. - UNDERGROUND ELECTRIC DISTRIBUTION CUSTOMER SERVICE = 685-0123
 ENGINEERING "DAMAGE CONTROL" = 234-5621
 "MISUTILITY" = 1-552-0100
 CHESAPEAKE & POTOMAC TELEPHONE CO. = 705-9976
 BUREAU OF UTILITIES, HOWARD CO. = 972-2366
- ALL WATER MAINS TO BE D.I.P. CLASS 52 UNLESS NOTED OTHERWISE.
- TOP OF WATER MAINS TO HAVE A MINIMUM OF 3/4" COVER UNLESS OTHERWISE NOTED.
- VALVES ADJACENT TO TEES SHALL BE STRAPPED TO TEES
- BLOCK ALL FITTINGS WITH CONCRETE.

- BURY LINE ELEVATIONS ON FIRE HYDRANTS SHALL BE SET TO THE ELEVATION ON THE DRAWINGS. ALL FIRE HYDRANTS SHALL BE STRAPPED AND BUTTRESSED WITH CONC. IN ACCORDANCE WITH STANDARD DETAILS SOIL AROUND THE FIRE HYDRANTS TO BE COMPACTED IN ACCORDANCE WITH SECTIONS 1003 AND 1008 STANDARD SPECIFICATIONS. FIRE HYDRANTS SHALL BE SET AS PER HOWARD COUNTY STD. DETAIL W.I.II. THE CONTRACTOR SHALL NOT OPERATE ANY WATER VALVES ON THE EXISTING SYSTEM.
- SERVICE CLAMPS ARE TO HAVE STAINLESS STRAPS.
- WATER METER SETTING TO BE INSIDE BUILDING.

SEDIMENT CONTROL MEASURES FOR THIS CONTRACT WILL BE IMPLEMENTED IN ACCORDANCE WITH SECTION 219 OF THESE SPECIFICATIONS AND ALSO AS SHOWN ON THE GRADING AND SEDIMENT CONTROL PLAN, SDP-87-104

REVIEW FOR HOWARD COUNTY SOIL CONSERVATION DISTRICT AND MEETS TECHNICAL REQUIREMENTS.

APPROVED: *[Signature]* 9/11/89
 HOWARD SOIL CONSERVATION DISTRICT

SEDIMENT CONTROL SERVICE
[Signature] 9/11/89
 HAMILTON TRACT
 A RESUB OF PARCEL I, PARCEL I-2
 8447 DORSEY RUN RD.
 ELECTION DISTRICT NO. G
 CONTRACT NO.

DEPARTMENT OF PUBLIC WORKS
 HOWARD COUNTY, MARYLAND

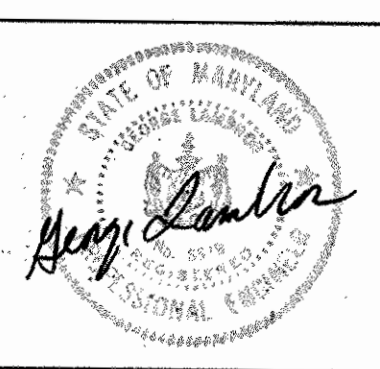
[Signature] 9/12/89
 DIRECTOR OF PUBLIC WORKS

[Signature] 9-11-89
 CHIEF - BUREAU OF UTILITIES

[Signature] 9-12-89
 CHIEF - BUREAU OF ENGINEERING

[Signature] 9/11/89
 CHIEF - LAND DEVELOPMENT DIVISION

ENGINEER
 PAUL LEE ENGINEERING, INC.
 304 W. PENNSYLVANIA AVENUE
 TOWSON, MARYLAND 21204

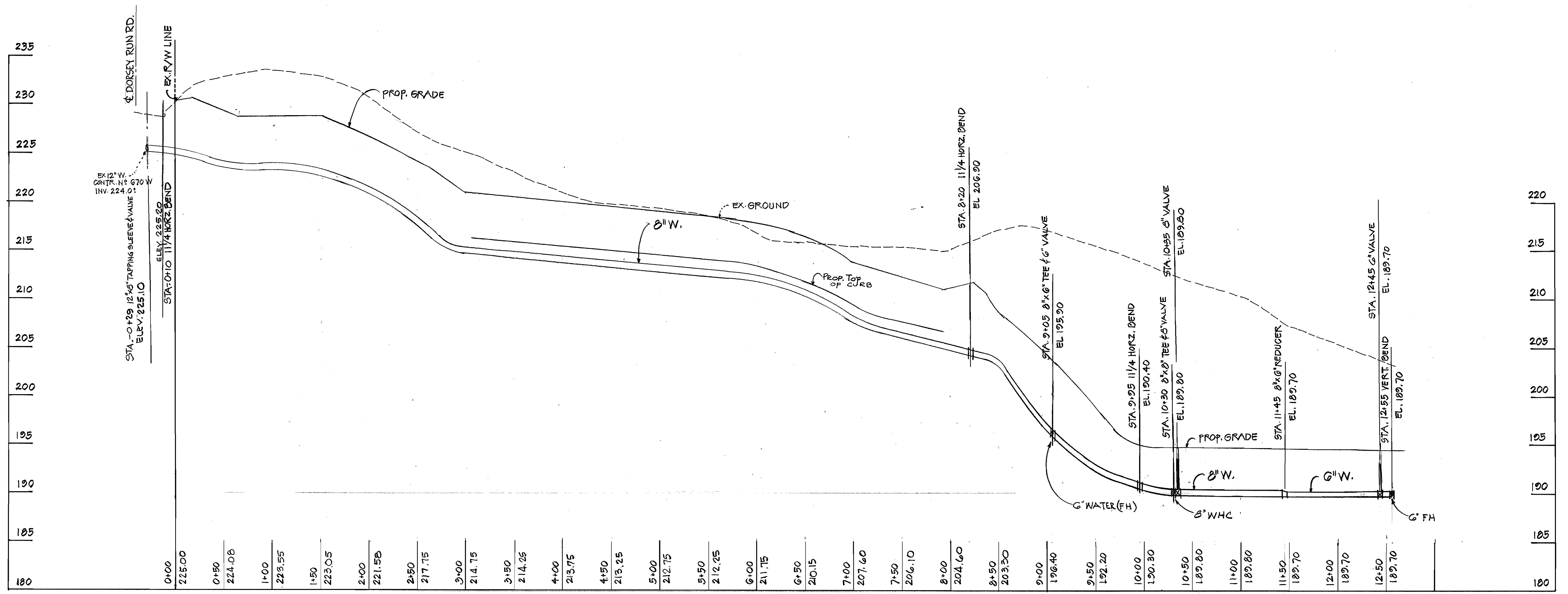


DES:	DRN:	CHK:	DATE:
JC	1	ADD PEG ON EXIST. ROAD & TYP. SECTION	9/90
BY	NO.	REVISION	DATE

CONTACT 44-1978-D
WATER PLAN

600' SCALE NO. 48
 BLOCK NO. H & I

SCALE AS SHOWN
 SHEET 1 OF 2



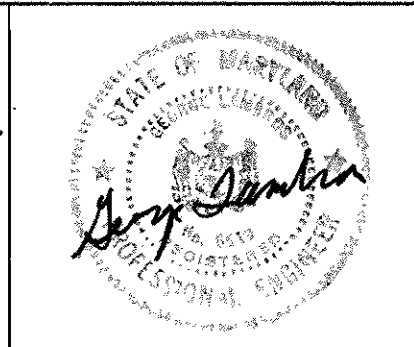
PROFILE
 SCALE: 1" = 50' HORZ.
 1" = 5' VERT.

DEPARTMENT OF PUBLIC WORKS
 HOWARD COUNTY, MARYLAND

James P. ... 7/12/89 DIRECTOR OF PUBLIC WORKS
Robert W. ... 7-11-89 CHIEF - BUREAU OF UTILITIES

Michael ... 9-11-89 CHIEF - BUREAU OF ENGINEERING
James ... 2/11/89 CHIEF - LAND DEVELOPMENT DIVISION

ENGINEER
 PAUL LEE ENGINEERING, INC.
 304 W. PENNSYLVANIA AVENUE
 TOWSON, MARYLAND 21284



DES:			
DRN:			
CHK:			
DATE:	JC	1	9/90
BY:	JC	NO.	1
REVISION:	REV. VERT. ALGN. 8" W. & CURB		

CONTRACT 44-1978-D
 WATER PROFILE

600' SCALE NO. 48 BLOCK NO. H & I

HAMILTON TRACT
 A RESUB OF PARCEL I, PARCEL I-2
 8447 DORSEY RUN RD.
 ELECTION DISTRICT NO. 6
 CONTRACT NO.

SCALE AS SHOWN
 SHEET 2 OF 2