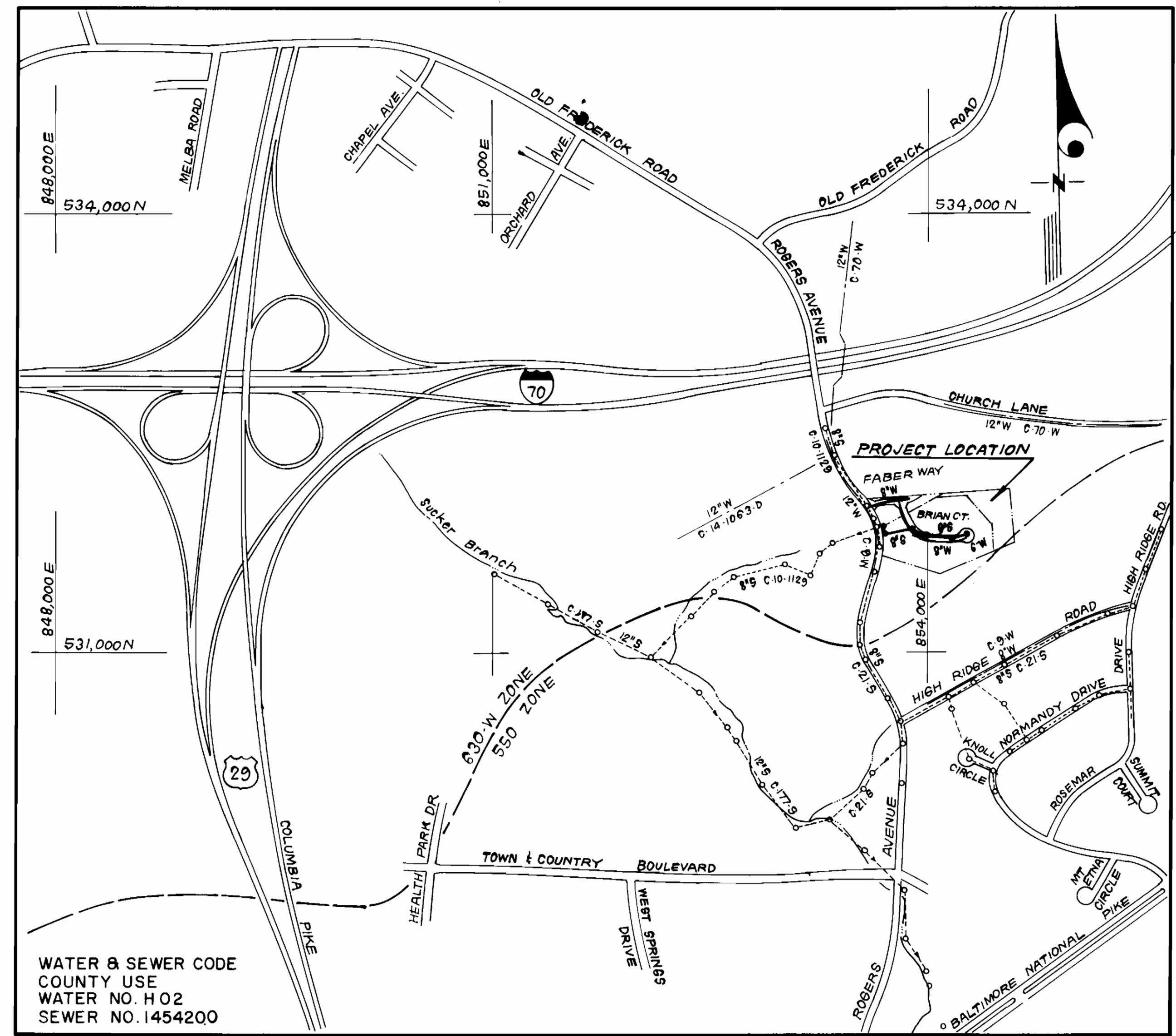


TYPE OF BUILDING	SINGLE FAMILY
NO. OF LOTS	14 Buildable Total 19
NO. OF WHC's	14
NO. OF SHC's	13
DRAINAGE AREA	PATAPSCO

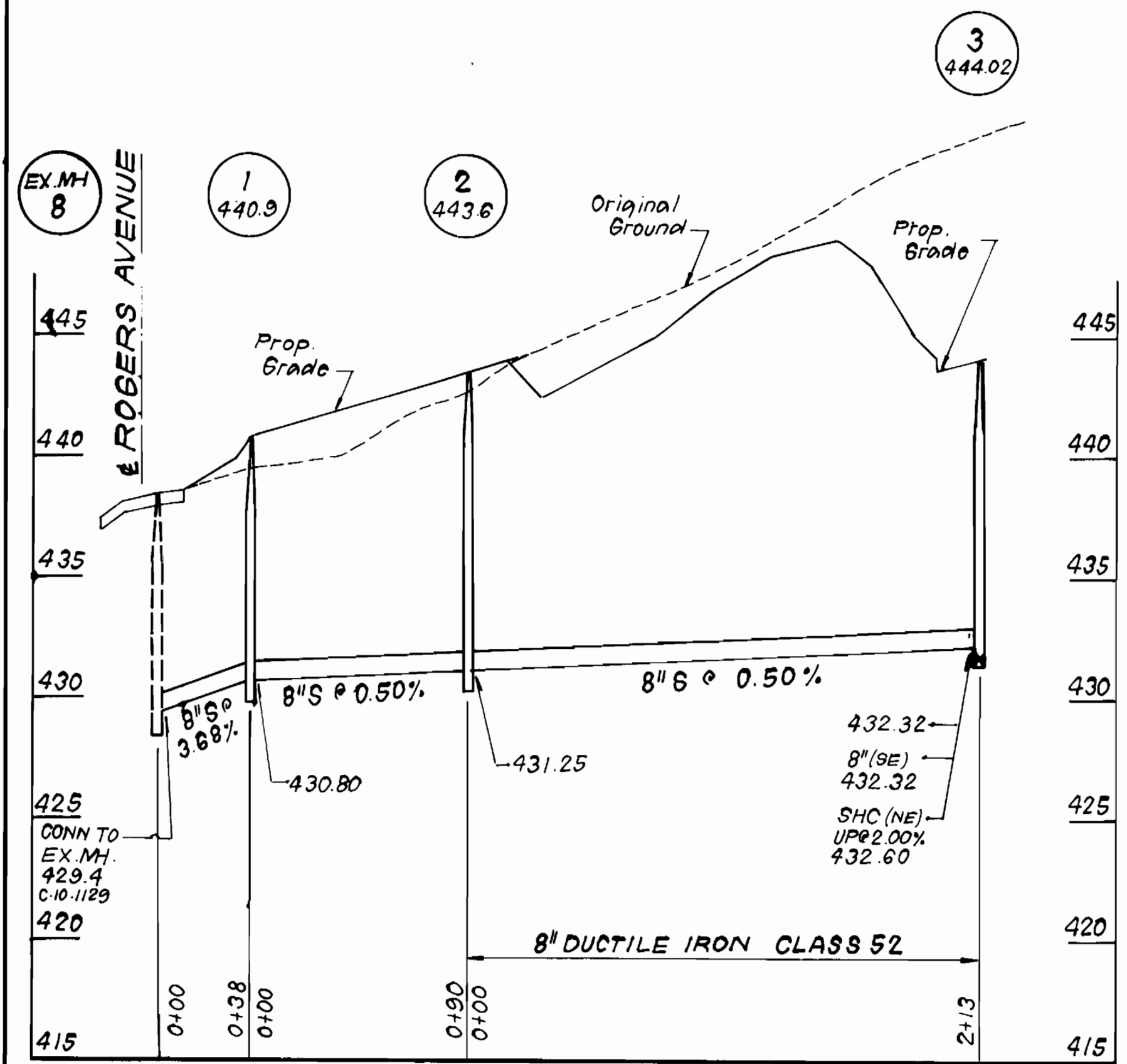


WATER & SEWER CODE
 COUNTY USE
 WATER NO. H02
 SEWER NO. 1454200

VICINITY MAP
 SCALE: 1" = 600'

GENERAL NOTES

- Approximate location of existing mains are shown. The contractor shall take all necessary precautions to protect existing mains and services and maintain uninterrupted supply. Any damage incurred shall be repaired immediately to the satisfaction of the Inspector, at the contractor's expense.
- All horizontal controls are based on Maryland State Coordinates.
- All vertical controls are based on U.S.G.S. Datum.
- All pipe elevations shown are invert elevations.
- Clear all utilities by a minimum of 6" clear all poles by 2'-0" minimum or tunnel as required. Any cost incurred to the contractor for tunneling or bracing at poles shall be included in unit prices bid for excavation and backfill.
- For details not shown on the drawings use Howard County Standard Details.
- For materials and construction methods use Howard County Standard Specifications and Howard County Design Manual, Volume IV, 1989 Amendments. The Contractor shall have Volume IV, 1989 Amend, on the job site.
- Contractor shall locate existing utilities a minimum of two (2) weeks in advance of construction operations in the vicinity of proposed utilities at his own expense.
- Contractor shall notify the following utilities or agencies at least five (5) working days before starting work shown on these plans.
 - State Highway Administration - 531-5533
 - Baltimore Gas & Electric Company - Underground Damage Control - 859-9004
 - Baltimore Gas & Electric Company - Contractor Services - 850-4620
 - Baltimore Gas & Electric Company - Trouble Shooting - 298-9001
 - "Miss Utility" - 1-800-257-7777
 - Chesapeake & Potomac (C & P) Telephone Company - 1-800-257-7777
 - Bureau of Utilities Howard County - 992-2366
 - Colonial Pipeline Company - 795-1390
- Trees are to be protected from damage to maximum extent. Trees located within the construction strip are not to be removed or damaged by the contractor.
- Contractor shall remove trees, stumps, and roots along line of excavation as directed by the Inspector. Payment for such removal shall be included in the unit price bid for excavation and backfill.
- Place regulation "Men Working" and warning signs as required to comply with Maryland State Highway Administration Manual of Traffic Control for Highway Construction and Maintenance Operations.
- All water mains to be D.I.P. Class 52 unless otherwise noted.
- Top of all water mains to have a minimum of 3'-1/2' cover unless otherwise noted.
- Valves adjacent to tees shall be strapped to tees.
- Block all fittings with concrete.
- Bury line elevations on fire hydrants shall be set to the elevations shown on the drawings. All fire hydrants shall be strapped and buttressed with concrete in accordance with standard details. Soil around the fire hydrant to be compacted in accordance with Sections 1000 & 1005 of the Standard Specifications.
- Ex. house on lot 1 shall have outside meter setting; All other lots shall have inside meter settings.
- The contractor shall not operate any water main valves on the existing system.
- All sewer mains shall be C.S.P.X., V.C.P.X., or P.V.C. unless otherwise noted.
- The contractor shall provide a joint in all sewer mains within 2'-0" of exterior manhole wall.
- All manholes shall be 4'-0" inside diameter, unless otherwise noted.
- Water main and water house connection lines must have a minimum of one foot separation from the sanitary sewer and sewer house connections as they cross. Except at crossings, water and sewer lines shall have a minimum horizontal separation of 10'.
- Manholes designated thus: WT, shall have a Watertight Frame and Cover.



PROFILE SCALE
 HORIZONTAL: 1" = 50'
 VERTICAL: 1" = 5'

Sediment Control Measures will be implemented in accordance with Section 219 of the Specifications & with Road Construction Plan E-9e-103, Drawing Sediment & Erosion Control.

REVIEWED FOR HOWARD SOIL CONSERVATION DISTRICT AND MEETS TECHNICAL REQUIREMENTS
 SIGNATURE: [Signature] DATE: 1/5/90
 U.S. SOIL CONSERVATION SERVICE

This Development Plan is approved for Soil Erosion and Sediment Control by the Howard Soil Conservation District.

APPROVED:
 SIGNATURE: [Signature] DATE: 1/5/90
 HOWARD S.C.D.

CONTRACT NO. 14-1973-D
 ROCKLAND SQUARE
 LOTS 1 THRU 22
 HOWARD COUNTY, MARYLAND
 DEPARTMENT OF PUBLIC WORKS

QUANTITIES			
ITEM	EST'D	AS BUILT	MATERIAL / SUPPLIER
8" S	824 LF		J-M MFG. CO.
8" W	821 LF		GRIFFIN PIPE
6" W	99 LF		GRIFFIN PIPE
4" SHC	420 LF		J-M MFG. CO.
1-1/2" WHC	55 LF		HOWELL METAL
1" WHC	115 LF		HOWELL METAL
3/4" WHC	142 LF		HOWELL METAL
4'-0" DIA. MH	6 EA		ATLANTIC
FIRE HYDRANT	2 EA		MUELLER
8" V	2 EA		MUELLER
12" x 18" TSBV	1 EA		MUELLER
METER BOX	1 EA		

DEPARTMENT OF PUBLIC WORKS
 HOWARD COUNTY, MARYLAND

Director of Public Works: [Signature] DATE: 1/9/90
 Chief, Bureau of Engineering: [Signature] DATE: 1/9/90
 Chief, Bureau of Utilities: [Signature] DATE: 3-28-90
 Chief, Land Development Div.: [Signature] DATE: 4/6/90

CLARK - FINEFROCK & SACKETT, INC.
 ENGINEERS - PLANNERS - SURVEYORS
 7135 MINSTREL WAY COLUMBIA MARYLAND 21045
 (301) 381-7500 BALTO. (301) 621-8100 WASH.

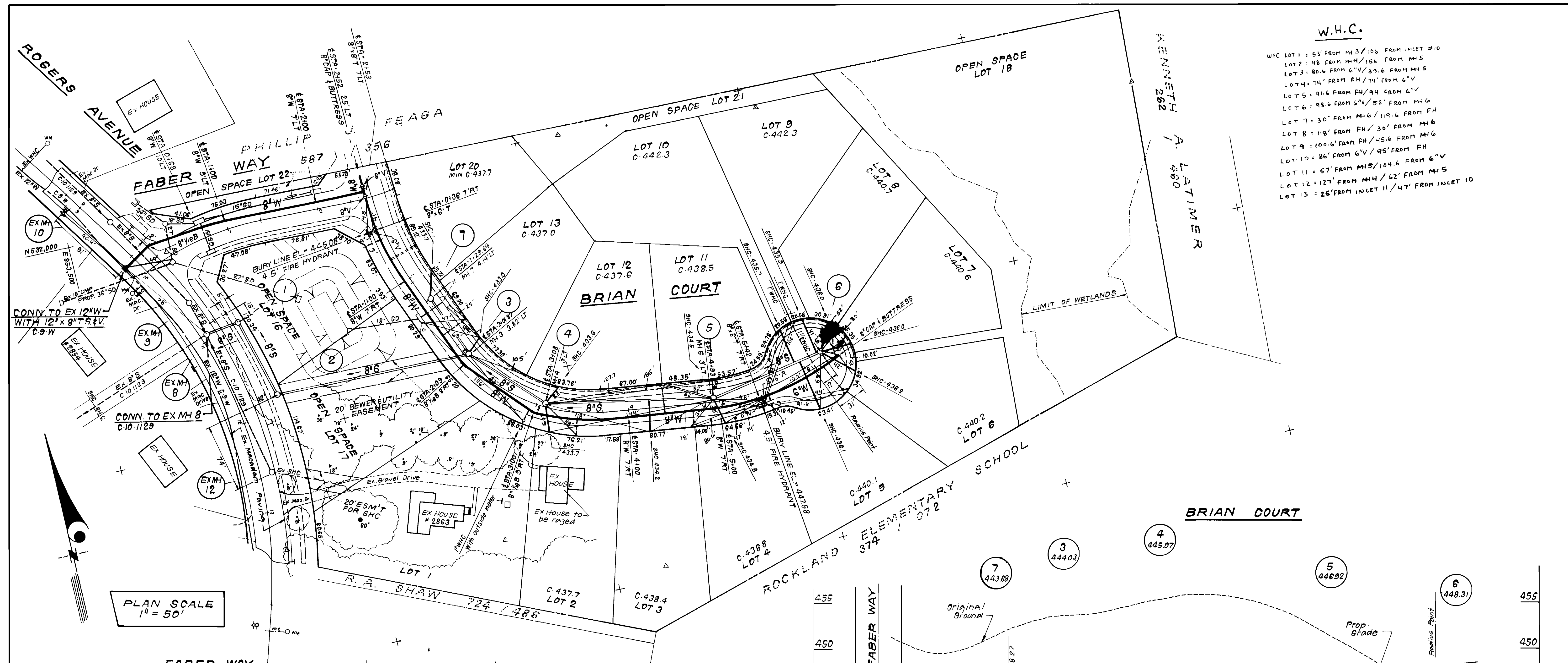
DES JTR	JTR	1	Rev. Quantities Schedule & 8" W at Int. Faber Way and Brian Court	8-23-91
DRN JTR	JTR	2	Rev. No. of Lots, Project Name and Quantities	4-10-92
CHK CCM				
DATE: NOV 89	M.M.	BY	NO.	AS-BUILTS
				REVISION
				DATE

TITLE SHEET
 600' SCALE MAP NO. 17 & 18 BLOCK NO.

ROCKLAND SQUARE
 LOTS 1 THRU 22 (F90-10 & F92-95)
 2ND ELECTION DISTRICT
 CONTRACT NO. 14-1973-D

SCALE AS SHOWN
 SHEET 1 OF 2

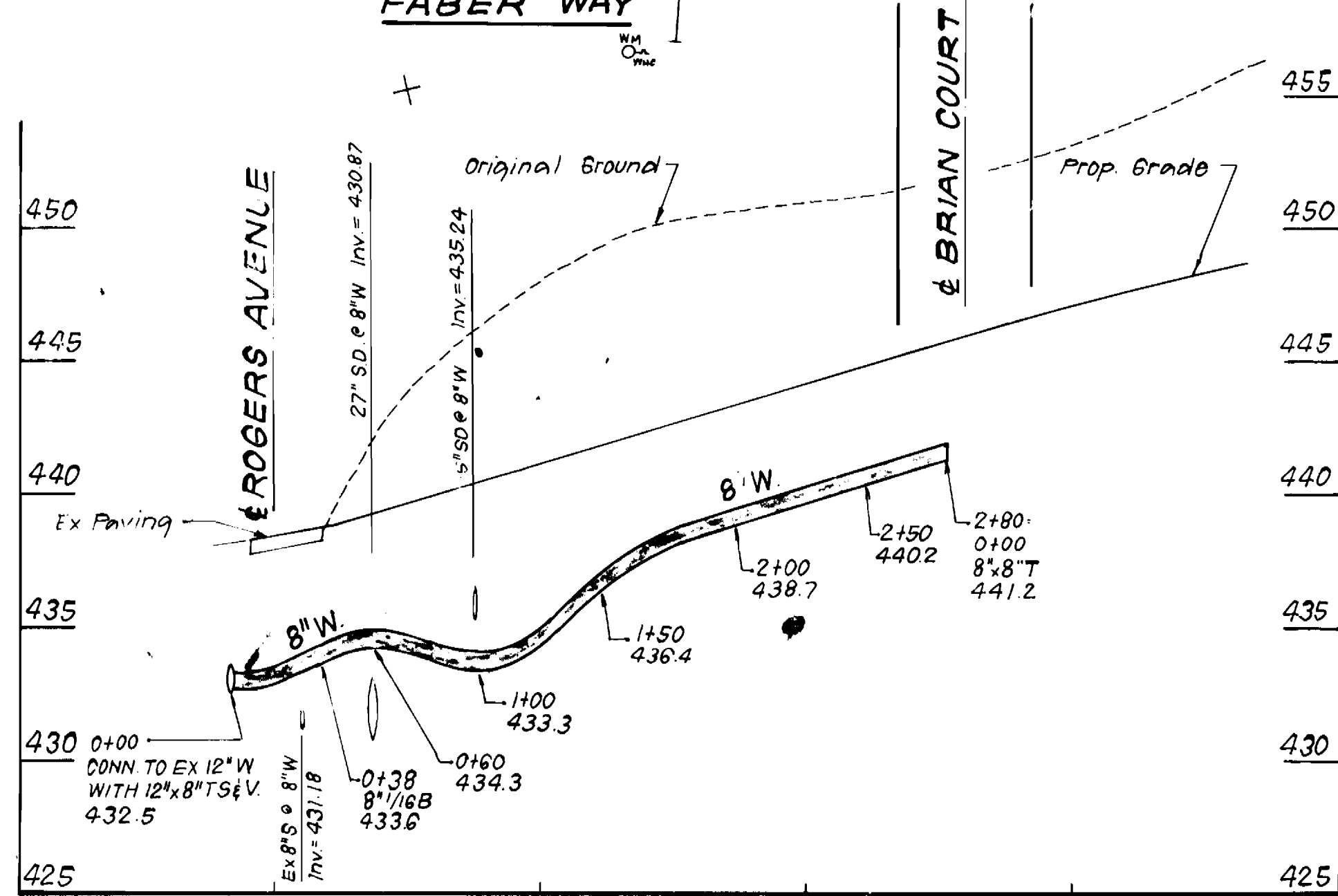
AS-BUILT



W.H.C.

W.H.C. LOT 1 = 53' FROM MH 3 / 106' FROM INLET #10
 LOT 2 = 48' FROM MH 4 / 166' FROM MH 5
 LOT 3 = 80.6' FROM 6" V / 39.6' FROM MH 5
 LOT 4 = 74' FROM FH / 74' FROM 6" V
 LOT 5 = 91.6' FROM FH / 44' FROM 6" V
 LOT 6 = 98.6' FROM 6" V / 52' FROM MH 6
 LOT 7 = 30' FROM MH 6 / 119.6' FROM FH
 LOT 8 = 118' FROM FH / 30' FROM MH 6
 LOT 9 = 100.6' FROM FH / 45.6' FROM MH 6
 LOT 10 = 86' FROM 6" V / 95' FROM FH
 LOT 11 = 57' FROM MH 5 / 104.6' FROM 6" V
 LOT 12 = 127' FROM MH 4 / 62' FROM MH 5
 LOT 13 = 26' FROM INLET 11 / 47' FROM INLET 10

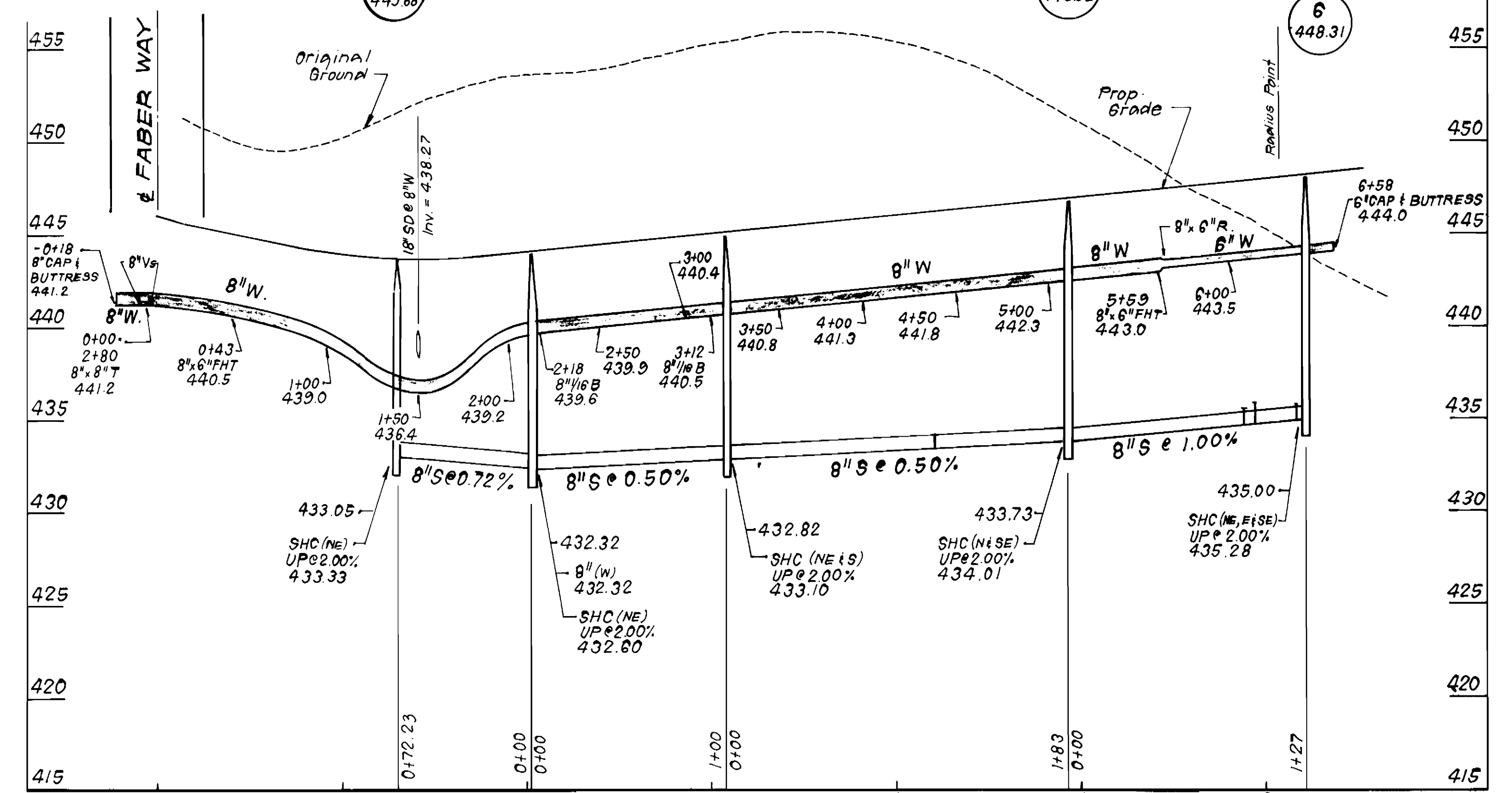
PLAN SCALE
1" = 50'



S.H.C.

SHC LOT 2 = 144' FROM MH 5 / 61' FROM MH 4
 LOT 3 = 76' FROM MH 5 / 118' FROM MH 4
 LOT 4 = 47' FROM FH VALUE / 30' FROM MH 5
 LOT 5 = 60' FROM FH VALUE / 64' FROM FH
 LOT 6 = 42' FROM MH 6 / 108.6' FROM FH VALUE
 LOT 7 = 33' FROM MH 6 / 118' FROM FH VALUE
 LOT 8 = 32' FROM MH 6 / 114.6' FROM FH VALUE
 LOT 9 = 130' FROM MH 5 / 41' FROM MH 6
 LOT 10 = 87' FROM FH / 52.6' FROM MH 6
 LOT 11 = 57' FROM MH 5 / 104.6' FROM FH VALUE
 LOT 12 = 127' FROM MH 4 / 62' FROM MH 5
 LOT 13 = 105' FROM MH 3 / 23' FROM MH 4
 LOT 14 = 63' FROM INLET 10 / 49' FROM INLET 11

PROFILE SCALE
HORIZONTAL: 1" = 50'
VERTICAL: 1" = 5'



DEPARTMENT OF PUBLIC WORKS
HOWARD COUNTY, MARYLAND

James P. [Signature] 4/9/90
DIRECTOR OF PUBLIC WORKS DATE

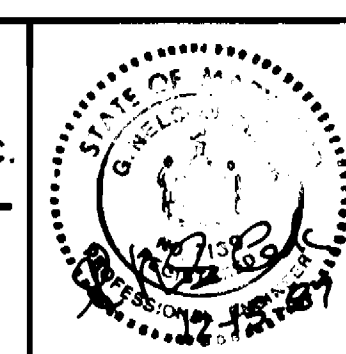
William E. Riven 4/9/90
CHIEF, BUREAU OF ENGINEERING DATE

Robert [Signature] 3-28-90
CHIEF, BUREAU OF UTILITIES DATE

Paul W. [Signature] 4/6/90
CHIEF, LAND DEVELOPMENT DIV. DATE

CFE CLARK · FINEPROCK & SACKETT, INC.
ENGINEERS · PLANNERS · SURVEYORS

7135 MINSTREL WAY COLUMBIA MARYLAND 21045
(301) 381-7500 BALTO. (301) 621-8100 WASH.



DES: JTR	JTR	1	Rev. 8" W of Int. Faber Way and Brian Court	8-23-91
DRN: JTR	JTR	3	Amended 72.23 LF 8" S & MH 7 - Rev Project Name	4-10-92
CHK: CCM				
DATE NOV 89	M.M.	2	AS-BUILTS	9-20-91
	BY	NO.	REVISION	DATE

PLAN & PROFILE OF WATER & SEWER MAINS

600'SCALE MAP NO. 17.B.18 BLOCK NO.

ROCKLAND SQUARE
LOTS 1 THRU 22 (F90-10 & F92-95)
2ND ELECTION DISTRICT
CONTRACT NO. 14-1973-D

SCALE AS SHOWN
SHEET 2 OF 2

AS-BUILT