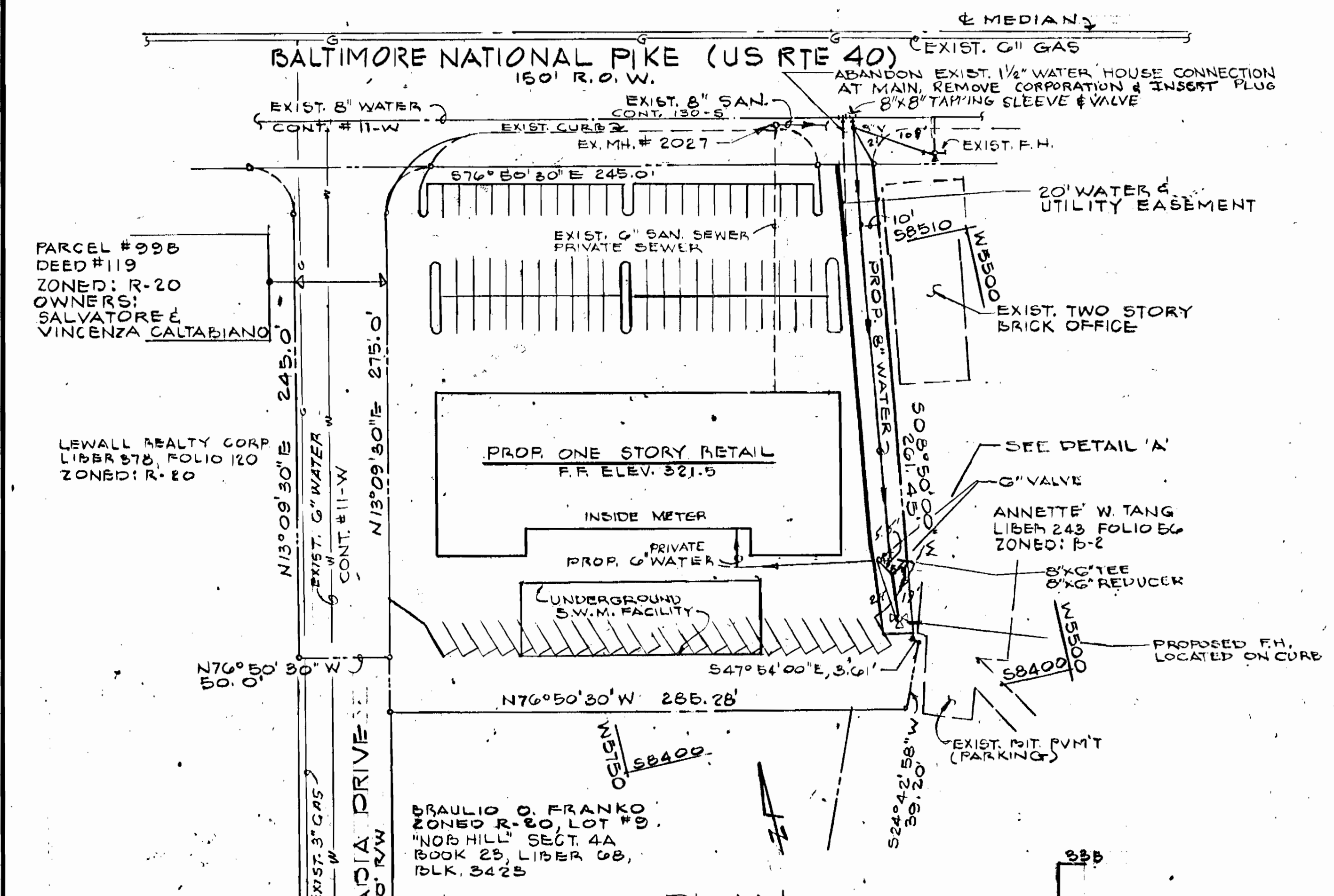


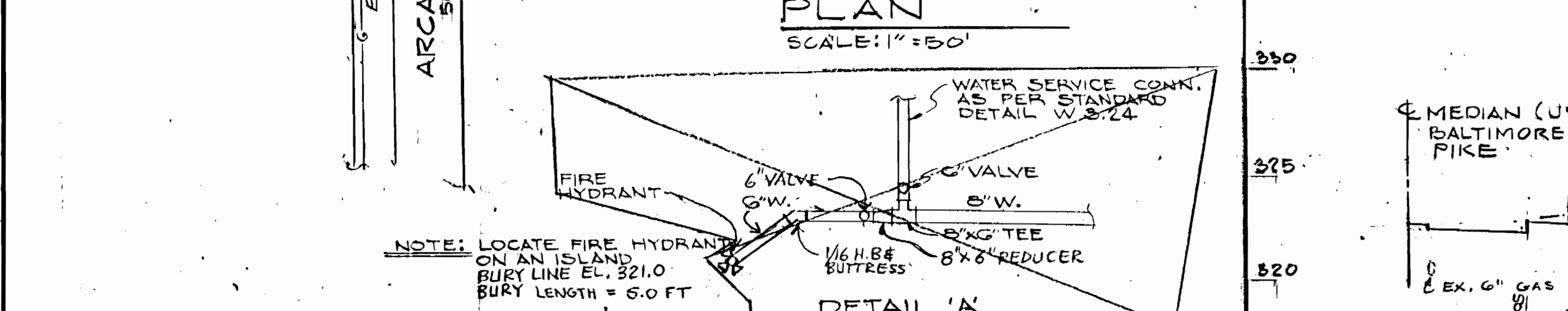
VICINITY MAP
SCALE: 1"=600'

GENERAL NOTES

- Approximate location of existing mains are shown. The contractor shall take all necessary precautions to protect existing mains and services and maintain uninterrupted supply. Any damage incurred shall be repaired immediately.
- All horizontal controls are based on Maryland State Coordinates.
- All vertical controls are based on U.S.G.S. Datum.
- All pipe elevations shown are invert elevations.
- Clear all utilities by a minimum of 6". Clear all poles 2'-0" minimum or tunnel as required.
- For all standard details see standards Howard County specification, Design Manual Volume IV, 1989 Amendments.
- Contractor shall locate existing utilities in advance of construction operations in the vicinity of proposed utilities.
- Contractor shall notify the following utilities or agencies at least five (5) days before starting work shown on these plans:
 - State Highway Administration - 531-5533
 - Baltimore Gas and Electric Company - Underground Electric Distribution Engineering - "Damage Control" - 234-5691
 - Baltimore Gas and Electric Company - Underground Gas Distribution Engineering - 559-0100
 - Chesapeake and Potomac Telephone Company - 725-8976
 - American Telephone and Telegraph - Cable Location Division - 301-393-3553
 - Colonial Pipeline Company - 781-4641
- Trees are to be protected from damage to maximum extent. Trees located within the construction strip are not to be removed or damaged by the contractor.
- Contractor shall remove trees, stumps and roots along line of excavation as directed by the Engineer. Payment for such removal shall be included in the unit price bid for excavation and backfill for water and sewer mains.
- Place regulation "Men Working" and warning signs as required to comply with Maryland State Highway Administration Manual of Traffic Control for Highway Construction and Maintenance Operations.
- All water mains shall be 12" Class 52 only.
- Top of all water mains to have a minimum of 3-1/2' cover unless otherwise noted.
- All valves shall be strapped to tees in accordance with standard details.
- Block all fittings with concrete, see standards bound in specifications.
- Bury line elevations on fire hydrants shall be set to the elevations shown on the drawings. All fire hydrants shall be strapped and buttressed with concrete in accordance with standard details. Soil around the fire hydrant to be compacted in accordance with Section 5-25 of the Standard Specifications. (0034.005)
- All water house connections shall be inside meter setting.
- All D.I.P. fittings shall be in accordance with A.W.W.A. Specification 212. Castile iron compact fittings 5 inch through 12 inch for water & other liquids.



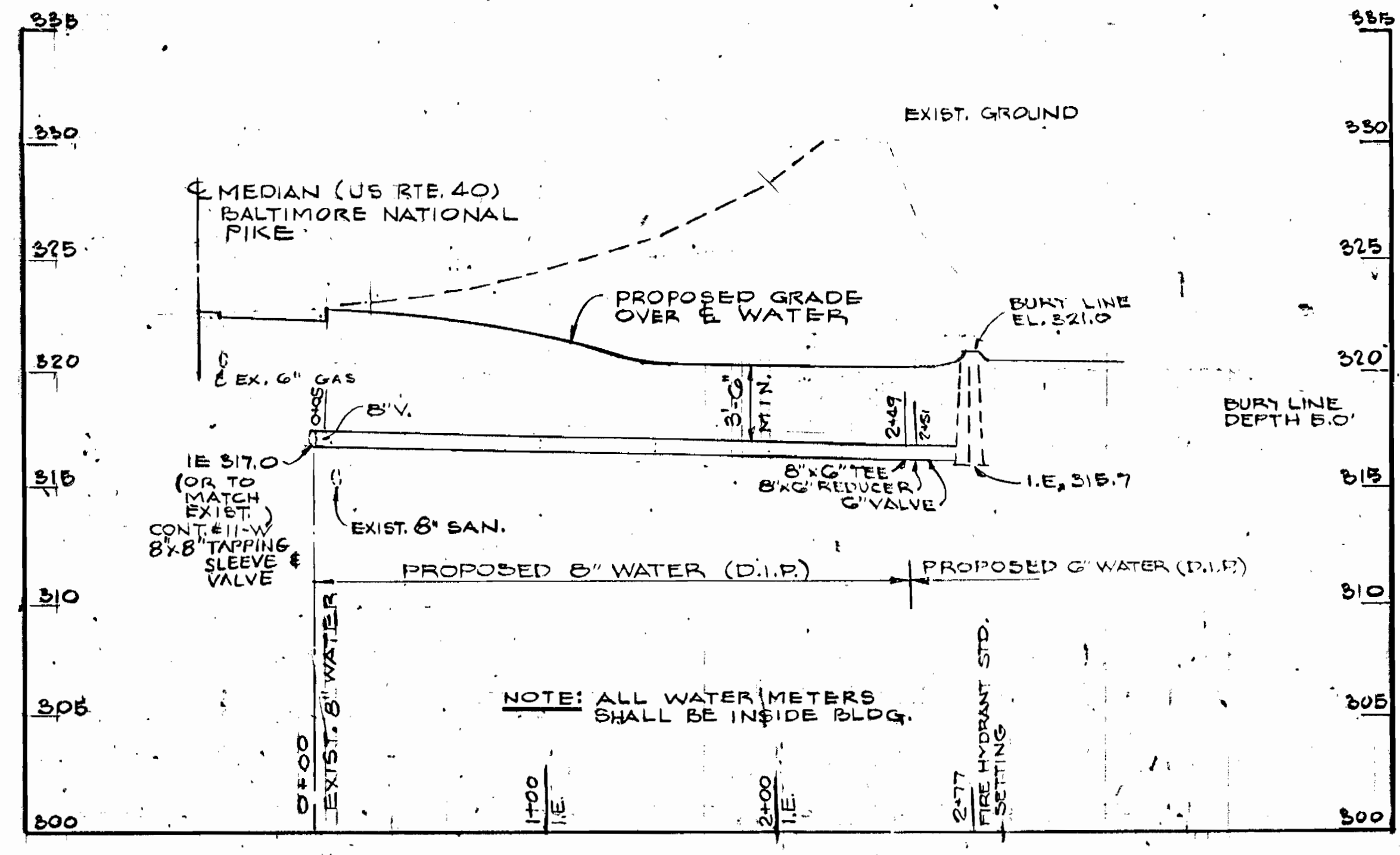
PLAN
SCALE: 1"=50'



DETAIL 'A'
N.T.S.

NOTE: LOCATE FIRE HYDRANT ON AN ISLAND BURY LINE EL. 321.0 BURY LENGTH = 5.0 FT

ITEM	BID	AS BUILT	MATERIAL/SUPPLIER
8" WATER	248 L.F.	248 L.F.	DIP/GRIFFIN
6" WATER	150 L.F.	35 L.F.	DIP/GRIFFIN
6" VALVE	2	2	DIP/KENNEDY
FIRE HYD.	1	1	KENNEDY
8" VALVE	1	1	DIP/KENNEDY
8"x8" TOPPING SLEEVE	1	1	DIP/GRIFFIN
6" VALVE	1	1	DIP/GRIFFIN
8"x6" REDUCER	1	1	DIP/GRIFFIN
8"x6" TEE	1	1	DIP/GRIFFIN
Public 8" Sewer		4" L.F.	PVC/AMERICAN



PROFILE - 8" WATER
SCALE: HORIZ. 1"=50' VERT. 1"=5'

REVIEWED FOR HOWARD SOIL CONSERVATION DISTRICT AND MEETS TECHNICAL REQUIREMENTS
James M. Hahn 8/29/89
SIGNATURE DATE
U.S. SOIL CONSERVATION SERVICE

This Development Plan is approved for Soil Erosion and Sediment Control by the Howard County Conservation District.
APPROVED:
Stephen L. Hahn 8/29/89
HOWARD S.C.D. DATE

Sediment Control Measures for this Contract will be implemented in accordance with Sec. 219 of the Standard Specifications, and Flood Construction Drawings SDP-83


DEPARTMENT OF PUBLIC WORKS
HOWARD COUNTY, MARYLAND

James M. Hahn 8/31/89
DIRECTOR OF PUBLIC WORKS - DATE

Robert M. Bauman 8-25-89
CHIEF - BUREAU OF UTILITIES - DATE

James M. Hahn 8/30/89
CHIEF - BUREAU OF ENGINEERING - DATE

James M. Hahn 8/30/89
CHIEF - LAND DEVELOPMENT DIVISION - DATE


QODESH ENGINEERING SERVICES, INC.
5800 Metro Drive
Baltimore, MD 21215
(301) 556-7361

DES	CHK	REV.	DATE	BY	NO.	REVISION	DATE
		2	8/1/89	J.A.C.	1	REVISE WATER LINE & PROFILE	8/1/89
		1	8/2/89	J.A.C.	1	PRELIMINARY COMMENTS FROM HOWARD CO.	8/2/89

VICINITY MAP, GENERAL NOTES
PLAN & PROFILE OF
8" WATER MAIN

600' SCALE MAP NO. 24 BLOCK NO. 364

CHATHAM PLAZA
PARCELS 577 & 998
SECOND ELECTION DISTRICT
CONTRACT NO. 44-1972-D, SDP-89-54

SCALE AS SHOWN
SHEET 1 OF 1

AS-BUILT 10-23-90