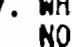
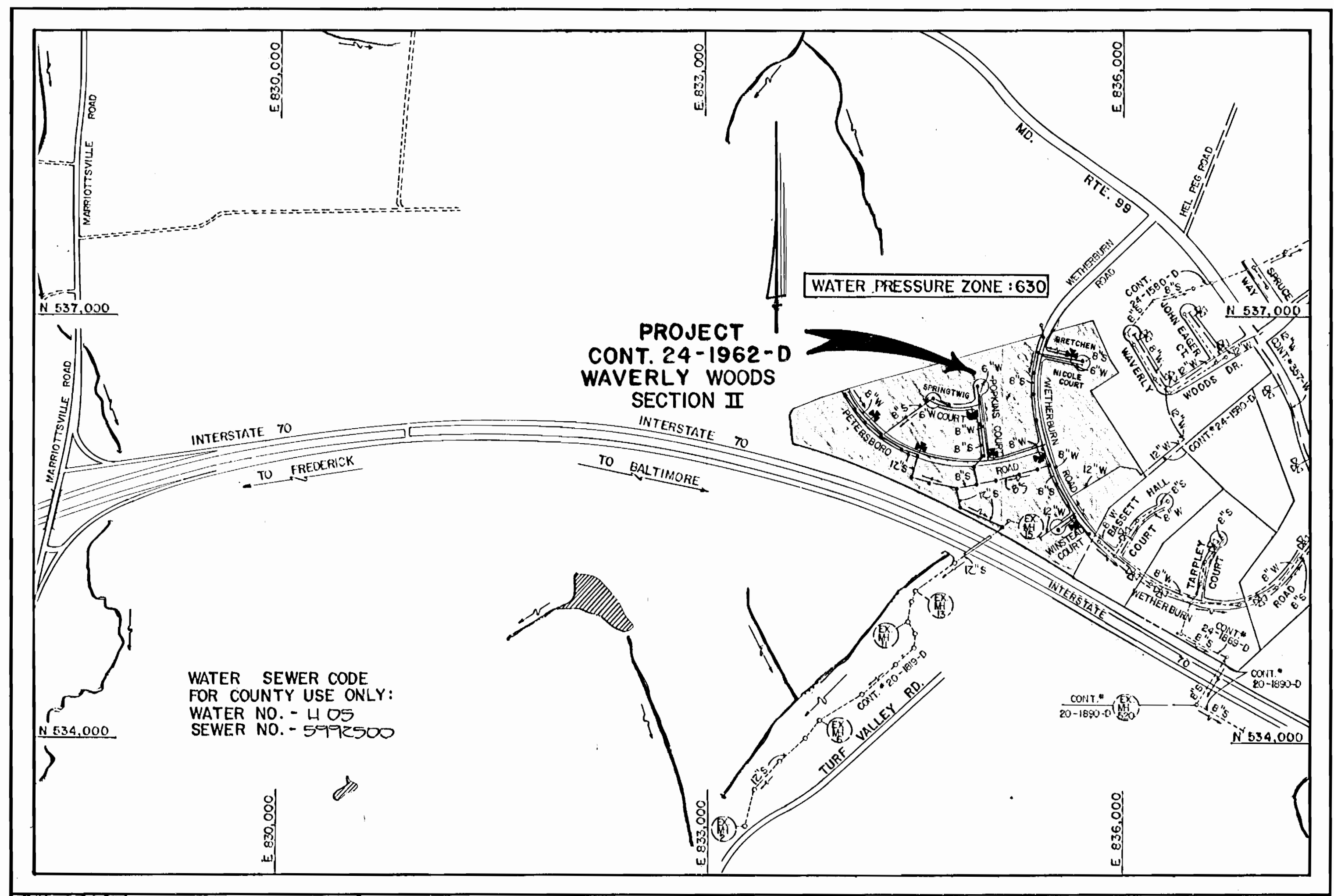


**GENERAL NOTES**

- APPROXIMATE LOCATION OF EXISTING MAINS ARE SHOWN. THE CONTRACTOR SHALL TAKE ALL NECESSARY PRECAUTIONS TO PROTECT EXISTING MAINS AND SERVICES AND MAINTAIN UNINTERRUPTED SUPPLY. ANY DAMAGE INCURRED SHALL BE REPAIRED IMMEDIATELY TO THE SATISFACTION OF THE ENGINEER AT THE CONTRACTOR'S EXPENSE.
- ALL HORIZONTAL CONTROLS ARE BASED ON MARYLAND COORDINATES.
- ALL VERTICAL CONTROLS ARE BASED ON U.S.G.S. DATUM.
- ALL PIPE ELEVATIONS SHOWN ARE INVERT ELEVATIONS.
- CLEAR ALL UTILITIES BY A MINIMUM OF 6".
- FOR DETAILS NOT SHOWN ON THE DRAWINGS, AND FOR MATERIALS AND CONSTRUCTION METHODS, USE HOWARD COUNTY DESIGN MANUAL, VOLUME IV, STANDARD SPECIFICATIONS AND DETAILS FOR CONSTRUCTION, AMENDED 1989, THE CONTRACTOR SHALL HAVE A COPY OF VOLUME IV ON THE JOB.
- WHERE TEST PITS HAVE BEEN MADE ON EXISTING UTILITIES, THEY ARE NOTED BY THE SYMBOL  AT THE LOCATION OF THE TEST PIT. A NOTE OR NOTES CONTAINING THE RESULTS OF THE TEST PIT OR PITS IS INCLUDED ON THE DRAWINGS. EXISTING UTILITIES IN THE VICINITY OF THE PROPOSED WORK FOR WHICH TEST PITS HAVE NOT BEEN DUG SHALL BE VERIFIED BY THE CONTRACTOR TO HIS OWN SATISFACTION. ANY DAMAGE TO EXISTING FACILITIES DUE TO THE CONTRACTOR'S NEGLIGENCE SHALL BE REPAIRED AT THE CONTRACTOR'S EXPENSE.
- CONTRACTOR SHALL NOTIFY THE FOLLOWING UTILITIES OR AGENCIES AT LEAST FIVE WORKING DAYS BEFORE STARTING WORK SHOWN ON THESE PLANS:
  - STATE HIGHWAY ADMINISTRATION : 531-5533
  - BALTIMORE GAS & ELECTRIC CO.-CONTRACTOR SERVICES: 850-4620
  - BALTIMORE GAS & ELECTRIC CO. UNDERGROUND DAMAGE CONTROL: 859-9004
  - BALTIMORE GAS & ELECTRIC CO. TROUBLE SHOOTING: 298-9001
  - MISE UTILITY: 1-559-0100
  - COLONIAL PIPELINE COMPANY: 795-1390
  - BUREAU OF UTILITIES, HOWARD COUNTY DEPARTMENT OF PUBLIC WORKS 892-2366
  - C&P TELEPHONE COMPANY 1-800-267-7777
- TREES AND SHRUBS ARE TO BE PROTECTED FROM DAMAGE TO MAXIMUM EXTENT. TREES AND SHRUBS LOCATED WITHIN THE CONSTRUCTION STRIP ARE NOT TO BE REMOVED OR DAMAGED BY THE CONTRACTOR.
- CONTRACTOR SHALL REMOVE TREES, STUMPS AND ROOTS ALONG LINE OF EXCAVATION. PAYMENT FOR SUCH REMOVAL SHALL BE INCLUDED IN THE UNIT PRICE BID FOR CONSTRUCTION OF THE MAIN.
- ALL WATER MAINS TO BE D.I.P. CLASS 52 UNLESS OTHERWISE NOTED.
- TOPS OF ALL WATER MAINS TO HAVE A MINIMUM OF 3-1/2' COVER UNLESS OTHERWISE NOTED.
- VALVES ADJACENT TO TEES SHALL BE STRAPPED TO TEES.
- ALL FITTINGS SHALL BE BUTTRESSED OR ANCHORED WITH CONCRETE IN ACCORDANCE WITH THE STANDARD DETAILS UNLESS OTHERWISE PROVIDED FOR ON THE DRAWINGS.
- FIRE HYDRANTS SHALL BE SET TO THE BURY LINE ELEVATIONS SHOWN ON THE DRAWINGS. ALL FIRE HYDRANTS SHALL BE STRAPPED AND BUTTRESSED WITH CONCRETE IN ACCORDANCE WITH STANDARD DETAILS. SOIL AROUND THE FIRE HYDRANT SHALL BE COMPACTED IN ACCORDANCE WITH SECTION 1000 AND 1005 OF THE STANDARD SPECIFICATIONS.
- THE CONTRACTOR SHALL NOT OPERATE ANY WATER MAIN VALVES ON THE EXISTING WATER SYSTEM.
- ALL WATER HOUSE CONNECTIONS SHALL BE FOR INSIDE METER SETTING, UNLESS OTHERWISE NOTED ON THE PLANS OR IN THE SPECIFICATIONS. (STD. DETAIL W.3.21).
- WATER MAINS AND WATER HOUSE CONNECTION LINES MUST BE PLACED SO AS TO HAVE AT LEAST ONE (1) FOOT SEPARATION FROM THE SEWER MAIN OR SEWER HOUSE CONNECTION AS THEY PASS ABOUT IT.
- MANHOLES DESIGNATED W.T. IN PLAN AND PROFILE SHALL HAVE WATER-TIGHT FRAME AND COVERS STANDARD DETAIL G5.52 WHERE WATERTIGHT MANHOLE FRAME AND COVER IS USED, SET TOP OF FRAME 1'-6" ABOVE FINISHED GRADE UNLESS OTHERWISE NOTED ON THE DRAWINGS.
- ALL SEWER MAINS SHALL BE C.S.P.X., R.C.S.P., V.C.P.X., OR P.V.C. UNLESS OTHERWISE NOTED.
- THE CONTRACTOR SHALL PROVIDE A JOINT IN ALL SEWER MAINS WITHIN 2'-0" OF EXTERIOR MANHOLE WALL.
- ALL MANHOLES SHALL BE 4'-0" INSIDE DIAMETER UNLESS OTHERWISE NOTED.
- MANHOLES SHOWN WITH 12" AND 16" WALLS ARE FOR BRICK MANHOLES ONLY.
- MANHOLES LOCATED WITHIN PROPOSED ROADWAY SHALL HAVE STANDARD HEAVY TRAFFIC MANHOLE FRAME AND COVER, STANDARD DETAIL G5.51.
- ALL D.I.P. FITTINGS SHALL BE IN ACCORDANCE WITH AWWA SPECIFICATION C-153 DUCTILE IRON COMPACT FITTINGS, 3-INCH THROUGH 12-INCH FOR WATER AND OTHER LIQUIDS.



TYPE OF BUILDING	RESIDENTIAL
NUMBER OF LOTS	72 (BUILDABLE)
NO. OF WATER HOUSE CONNECTIONS	72
NO. OF SEWER HOUSE CONNECTIONS	72
DRAINAGE AREA	LITTLE PATUXENT

-VICINITY MAP-  
SCALE: 1" = 600'

TREATMENT PLANT: PATAPSCO WASTEWATER  
TREATMENT PLANT VIA THE ROUTE 108 PUMPING STATION

QUANTITIES			
ITEM	ESTIMATED	AS-BUILT	SUPPLIER
12" SEWER	1169 LF	903.42 LF	BEL AIR RD
10" SEWER (D.I.P)	496 LF	1249 LF	"
8" SEWER	4196 LF	2282 LF	"
6" SEWER (D.I.P)	115 LF	114.6 LF	"
4" SEWER	2627 LF	2110 LF	"
MANHOLES	26 EA	33 EA	B.C. UTILITY
12" WATER	1571 LF	1300.13 LF	A&P WATER & SEWER
8" WATER	4075 LF	3139.9 LF	"
6" WATER	555 LF	370 LF	"
FIRE HYDRANTS	7 EA	9 EA	U.S. PIPE
1" WHC	627 LF	654 LF	HOWELL METALS
3/4" WHC	1571 LF	1605 LF	"
12" VALVES	3 EA	5 EA	MUELLER CO.
8" VALVES	7 EA	7 EA	"
6" VALVES	9 EA	9 EA	"
6" x 6" REDUCERS	3 EA	3 EA	GRIFFIN PIPE
12" x 6" REDUCERS	2 EA	2 EA	"
OUTSIDE METER VAULTS	2 EA	2 EA	"

WATER SEWER CODE  
FOR COUNTY USE ONLY:  
WATER NO. - 1105  
SEWER NO. - 5992500

# CONTRACT NO. 24-1962-D

## WAVERLY WOODS: SECTION II

### WATER AND SEWER MAIN EXTENSIONS

# HOWARD COUNTY, MARYLAND

## DEPARTMENT OF PUBLIC WORKS

THIS DEVELOPMENT PLAN IS APPROVED FOR EROSION AND SEDIMENT CONTROL BY HOWARD SOIL CONSERVATION DISTRICT.

SEDIMENT CONTROL MEASURES FOR THIS CONTRACT WILL BE IMPLEMENTED IN ACCORDANCE WITH SECTION 210 OF THE HOWARD COUNTY DESIGN MANUAL AND STANDARDS AND SPECIFICATIONS FOR SOIL EROSION AND SEDIMENT CONTROL IN DEVELOPING AREAS AND ALSO AS SHOWN ON THE GRADING AND SEDIMENT CONTROL PLAN F 90-100.

APPROVED: *John R. Robertson* 8/15/90 *James Martin* 8/15/90  
HOWARD SOIL CONSERVATION DISTRICT DATE USE SOIL CONSERVATION SERVICE DATE

PLAN REFERENCE NUMBERS
S 89-44
P 89-70
F 90-100

DEPARTMENT OF PUBLIC WORKS  
HOWARD COUNTY, MARYLAND

*James Martin* 8/17/90  
DIRECTOR OF PUBLIC WORKS (Acting) DATE

*John R. Robertson* 8-10-90  
CHIEF, BUREAU OF UTILITIES DATE

*James Martin* 8/16/90  
CHIEF, LAND DEVELOPMENT DIVISION DATE

FISHER, COLLINS AND CARTER, INC.  
CONSULTING ENGINEERS AND LAND SURVEYORS  
8388 COURT AVENUE  
ELLKOTT CITY, MARYLAND 21043



DES: MM	
DRN: MM/SH	
CHK: FWK	
DATE:	11/2/89
BY:	NO.
REVISION	ADD LOTS 50-147 TO TITLE BLOCK
DATE	11/2/89

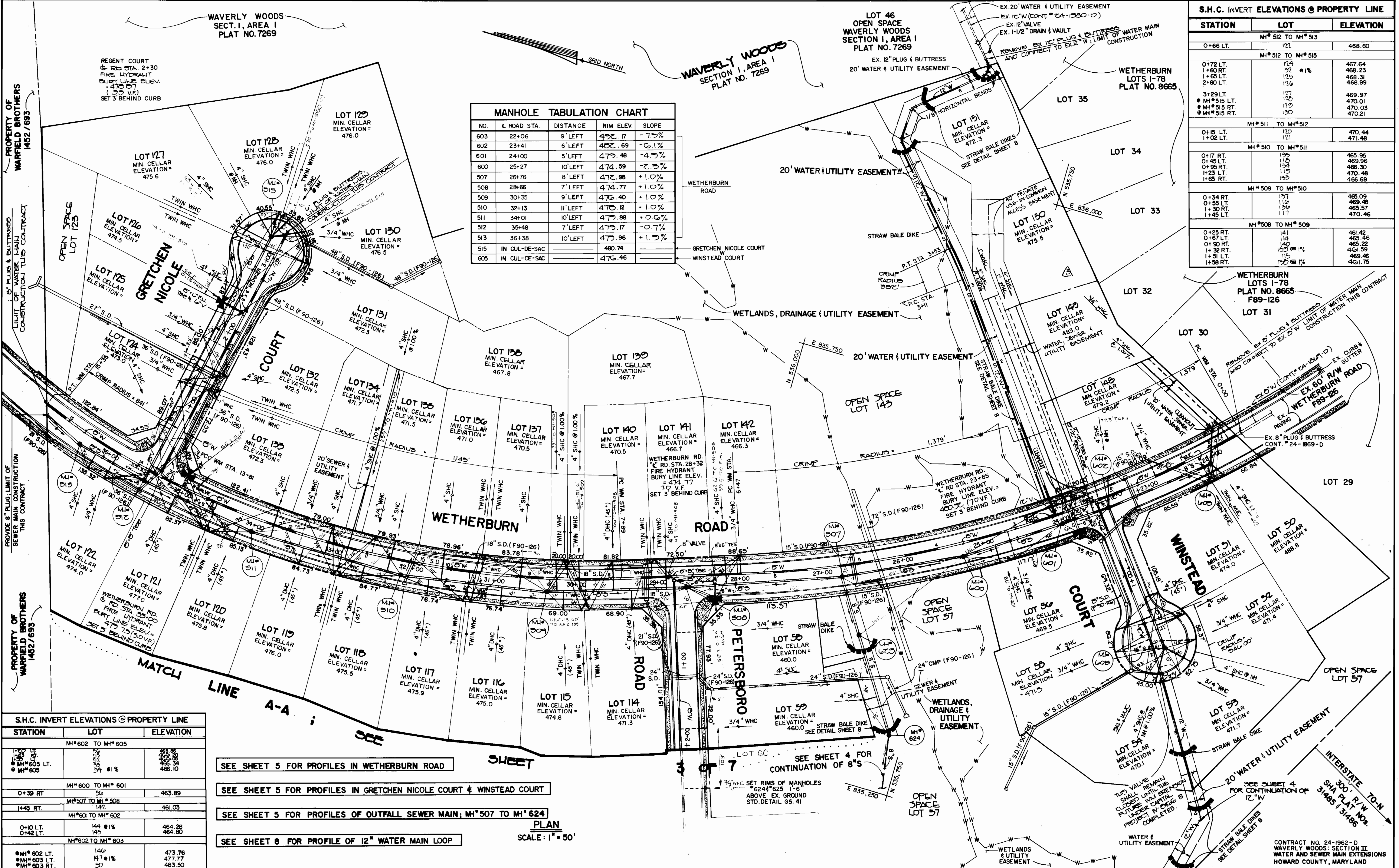
TITLE SHEET

600' SCALE MAP NO. 16 BLOCK NO.

WAVERLY WOODS  
SECTION II : LOTS 55-147  
CONTRACT NO. 24-1962-D  
SECOND ELECTION DISTRICT  
HOWARD COUNTY, MARYLAND

SCALE AS SHOWN  
SHEET 1 OF 8

CONTRACT NO. 24-1962-D  
WAVERLY WOODS: SECTION II  
WATER AND SEWER MAIN EXTENSIONS  
HOWARD COUNTY, MARYLAND



**MANHOLE TABULATION CHART**

NO.	℄ ROAD STA.	DISTANCE	RIM ELEV.	SLOPE
603	22+06	9' LEFT	492.17	-7.5%
602	23+41	6' LEFT	482.69	-6.1%
601	24+00	5' LEFT	479.48	-4.7%
600	25+27	10' LEFT	474.59	-2.3%
507	26+76	8' LEFT	472.98	+1.0%
508	28+66	7' LEFT	474.77	+1.0%
509	30+35	9' LEFT	476.40	+1.0%
510	32+13	11' LEFT	476.12	+1.0%
511	34+01	10' LEFT	479.88	+0.6%
512	35+48	7' LEFT	479.17	-0.7%
513	36+38	10' LEFT	479.96	+1.9%
515	IN CUL-DE-SAC		480.74	
605	IN CUL-DE-SAC		476.46	

**S.H.C. INVERT ELEVATIONS @ PROPERTY LINE**

STATION	LOT	ELEVATION
MH# 512 TO MH# 513		
0+66 LT.	122	468.60
MH# 512 TO MH# 515		
0+72 LT.	124	467.64
1+60 RT.	132	468.23
1+65 LT.	125	468.31
1+66 LT.	126	468.59
3+29 LT.	127	469.97
MH# 515 LT.	130	470.01
MH# 515 RT.	129	470.03
MH# 515 RT.	130	470.21
MH# 511 TO MH# 512		
0+15 LT.	120	470.44
1+02 LT.	121	471.48
MH# 510 TO MH# 511		
0+17 RT.	119	465.96
0+45 LT.	116	469.96
0+95 RT.	114	466.30
1+23 LT.	119	470.48
1+65 RT.	120	466.69
MH# 509 TO MH# 510		
0+34 RT.	117	465.09
0+55 LT.	116	469.48
1+30 RT.	119	469.57
1+45 LT.	117	470.46
MH# 508 TO MH# 509		
0+25 RT.	141	461.42
0+67 LT.	144	463.46
0+90 RT.	140	465.22
1+32 RT.	137	461.59
1+51 LT.	115	469.46
1+58 RT.	120	461.75

**S.H.C. INVERT ELEVATIONS @ PROPERTY LINE**

STATION	LOT	ELEVATION
MH# 602 TO MH# 605		
0+36 LT.	120	463.86
0+37 LT.	121	463.98
MH# 605	122	465.10
MH# 600 TO MH# 601		
0+39 RT.	50	463.89
MH# 507 TO MH# 508		
1+43 RT.	147	461.03
MH# 601 TO MH# 602		
0+10 LT.	144 @ 1%	464.28
0+42 LT.	145	464.80
MH# 602 TO MH# 603		
MH# 602 LT.	146	473.76
MH# 603 LT.	147 @ 1%	477.77
MH# 603 RT.	50	483.50

SEE SHEET 5 FOR PROFILES IN WETHERBURN ROAD

SEE SHEET 5 FOR PROFILES IN GRETCHEN NICOLE COURT & WINSTEAD COURT

SEE SHEET 5 FOR PROFILES OF OUTFALL SEWER MAIN; MH# 507 TO MH# 624

SEE SHEET 8 FOR PROFILE OF 12" WATER MAIN LOOP

DEPARTMENT OF PUBLIC WORKS  
HOWARD COUNTY, MARYLAND

8/17/90  
DIRECTOR OF PUBLIC WORKS

8-10-90  
CHIEF, BUREAU OF UTILITIES

FISHER, COLLINS, AND CARTER, INC.  
CONSULTING ENGINEERS AND LAND SURVEYORS

8388 COURT AVENUE  
ELLICOTT CITY, MARYLAND 21043



DES: J.J.U.

DRN: J.J.U.

CHK: P.W.K.

DATE:

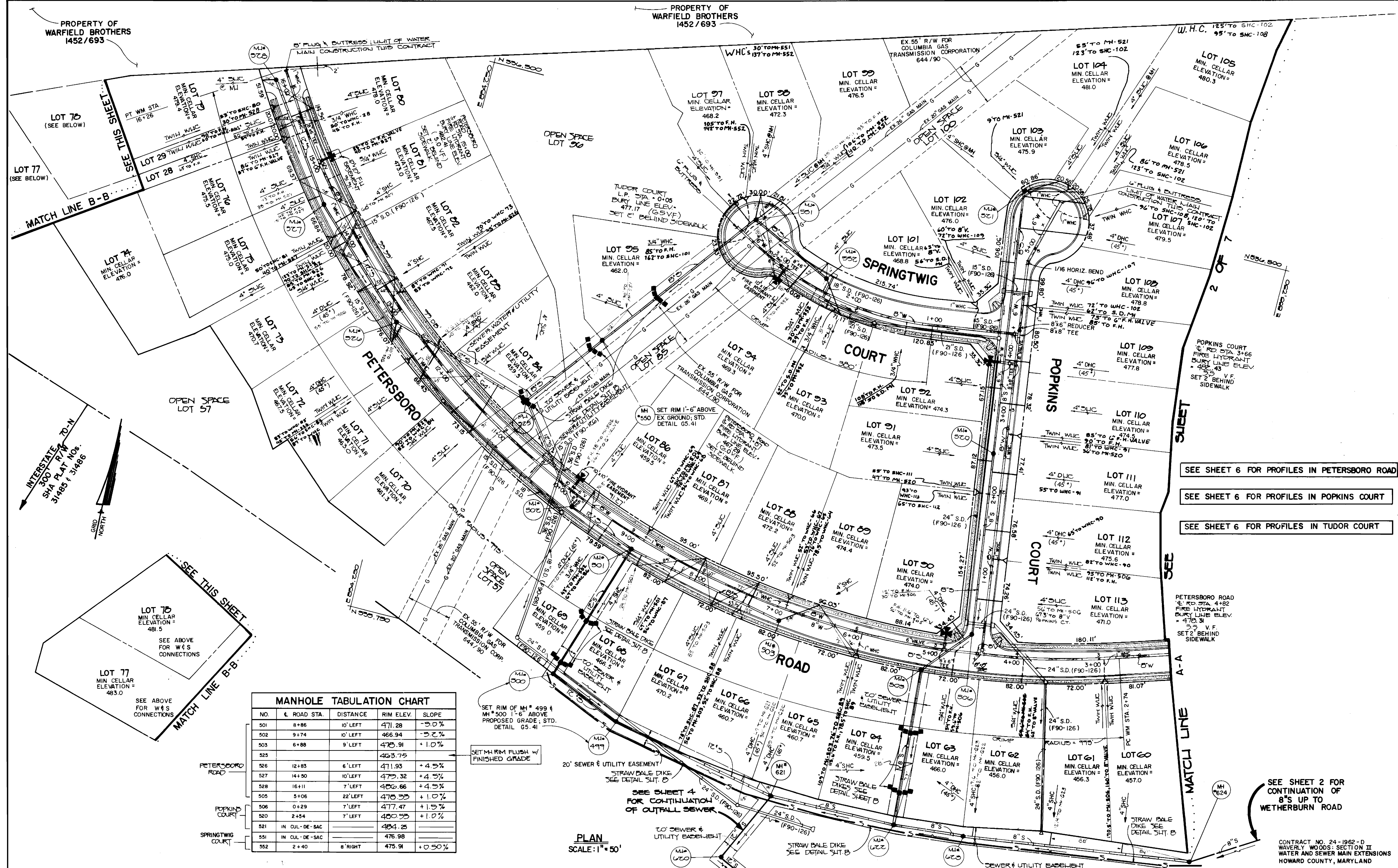
BY	NO.	REVISION	DATE
J.J.U.	1	REVISION 10-19-91 (SEE SHEET 4)	10/19/91
J.J.U.	2	CHANGE LOT NUMBERS	11/13/91
S.F.H.	3	CHANGE LOTS 65-72, 91 & 2 TO 45" DHCs.	7/25/91

PLAN  
WATER AND SEWER MAINS

600' SCALE MAP NO. 17 BLOCK NO.

WAVERLY WOODS  
SECTION II LOTS 50-147  
CONTRACT NO. 24-1962-D  
SECOND ELECTION DISTRICT  
HOWARD COUNTY, MARYLAND

SCALE AS SHOWN  
SHEET 2 OF 8



**MANHOLE TABULATION CHART**

NO.	& ROAD STA.	DISTANCE	RIM ELEV.	SLOPE
501	8+86	10' LEFT	471.28	-5.0%
502	9+74	10' LEFT	466.94	-5.2%
503	6+88	9' LEFT	475.91	+1.0%
525			463.75	
526	12+83	6' LEFT	471.93	+4.5%
527	14+50	10' LEFT	479.32	+4.5%
528	16+11	7' LEFT	482.66	+4.5%
505	3+06	22' LEFT	475.33	+1.0%
506	0+29	7' LEFT	477.47	+1.5%
520	2+54	7' LEFT	480.53	+1.0%
521	IN CUL-DE-SAC		484.25	
551	IN CUL-DE-SAC		476.98	
552	2+40	8' RIGHT	475.91	+0.50%

SET RIM OF MH # 499 & MH # 500 1'-6" ABOVE PROPOSED GRADE; STD. DETAIL G5.41

SET MH RIM FLUSH W/ FINISHED GRADE

PLAN SCALE: 1" = 50'

SEE SHEET 6 FOR PROFILES IN PETERSBORO ROAD

SEE SHEET 6 FOR PROFILES IN POPKINS COURT

SEE SHEET 6 FOR PROFILES IN TUDOR COURT

SEE SHEET 2 FOR CONTINUATION OF 8" S UP TO WETHERBURN ROAD

CONTRACT NO. 24-1962-D  
WAVERLY WOODS SECTION II  
WATER AND SEWER MAIN EXTENSIONS  
HOWARD COUNTY, MARYLAND

DEPARTMENT OF PUBLIC WORKS  
HOWARD COUNTY, MARYLAND

8/17/90  
DIRECTOR OF PUBLIC WORKS

8/17/90  
CHIEF, BUREAU OF ENGINEERING

8/17/90  
CHIEF, LAND DEVELOPMENT DIVISION

FISHER, COLLINS, AND CARTER, INC.  
CONSULTING ENGINEERS AND LAND SURVEYORS  
8388 COURT AVENUE  
ELLICOTT CITY, MARYLAND 21043

9757  
TERRELL A. FISHER DATE

DES: MM					
DRN: MM/SH					
CHK: PWK	M.Y.	RELOCATED MH 923, 5HC & ADDED SEWER & UTILITY EASMT.	12/12/91		
	M.J.M.	CHANGE LOT NUMBERS	11/23/91		
	S.F.H.	CHANGE LOTS 58-60, 62-63, 41, 14, 16, 17, 20, 23 & 24 TO 45" DHC	7/25/91		
DATE:	BY NO.	REVISION	DATE	600' SCALE MAP NO. 17	BLOCK NO.

PLAN  
WATER AND SEWER MAINS

WAVERLY WOODS  
SECTION II LOTS 50-147  
CONTRACT NO. 24-1962-D  
SECOND ELECTION DISTRICT  
HOWARD COUNTY, MARYLAND

SCALE AS SHOWN  
SHEET 3 OF 8

S.H.C. INVERT ELEVATIONS @ PROPERTY LINE *			S.H.C. INVERT ELEVATIONS @ PROPERTY LINE *		
STATION	LOT	ELEVATION	STATION	LOT	ELEVATION
MH#551 TO MH#552					
			0+55 LT.	50	466.16
			0+56 LT.	51	468.76
			0+85 RT.	94	463.37
			1+02 LT.	101	463.15
			0+552 RT.	93	463.89
MH#523 TO MH#524					
0+40 LT.	62	449.08			
1+07 LT.	61	449.63			
1+34 LT.	60	449.98			
MH#524 TO MH#525					
0+50 LT.	59	451.92			
1+00 LT.	58	453.47			
MH#527 TO MH#528					
0+12 LT.	75	469.27			
0+38 LT.	76	469.95			
1+05 LT.	77	471.58			
1+15 RT.	80	472.10			
1+20 LT.	79	471.95			
0+528 LT.	78	473.36			
MH#526 TO MH#527					
0+46 RT.	82	461.60			
0+55 LT.	73	464.90			
1+17 RT.	74	465.77			
1+42 LT.	81	467.57			
MH#525 TO MH#526					
0+525 LT.	83	466.08			
1+15 RT.	85	466.67			
1+25 LT.	71	464.76			
1+78 LT.	72	461.76			
MH#525 TO MH#550					
0+11 LT.	84	454.27			
MH#550 TO MH#551					
0+47 LT.	25	456.57			
MH#501 TO MH#502					
0+155 LT.	66	457.34			
0+170 RT.	66	454.08			
MH#501 TO MH#503					
0+15 RT.	65	460.51			
0+86 LT.	67	463.33			
1+10 RT.	67	464.50			
1+60 LT.	68	466.43			
0+503 LT.	69	468.27			

\* NOTE: SEE PLAN SHEETS 2 & 3 FOR SEWER SYSTEM LAYOUT & LOCATIONS OF SEWER HOUSE CONNECTIONS

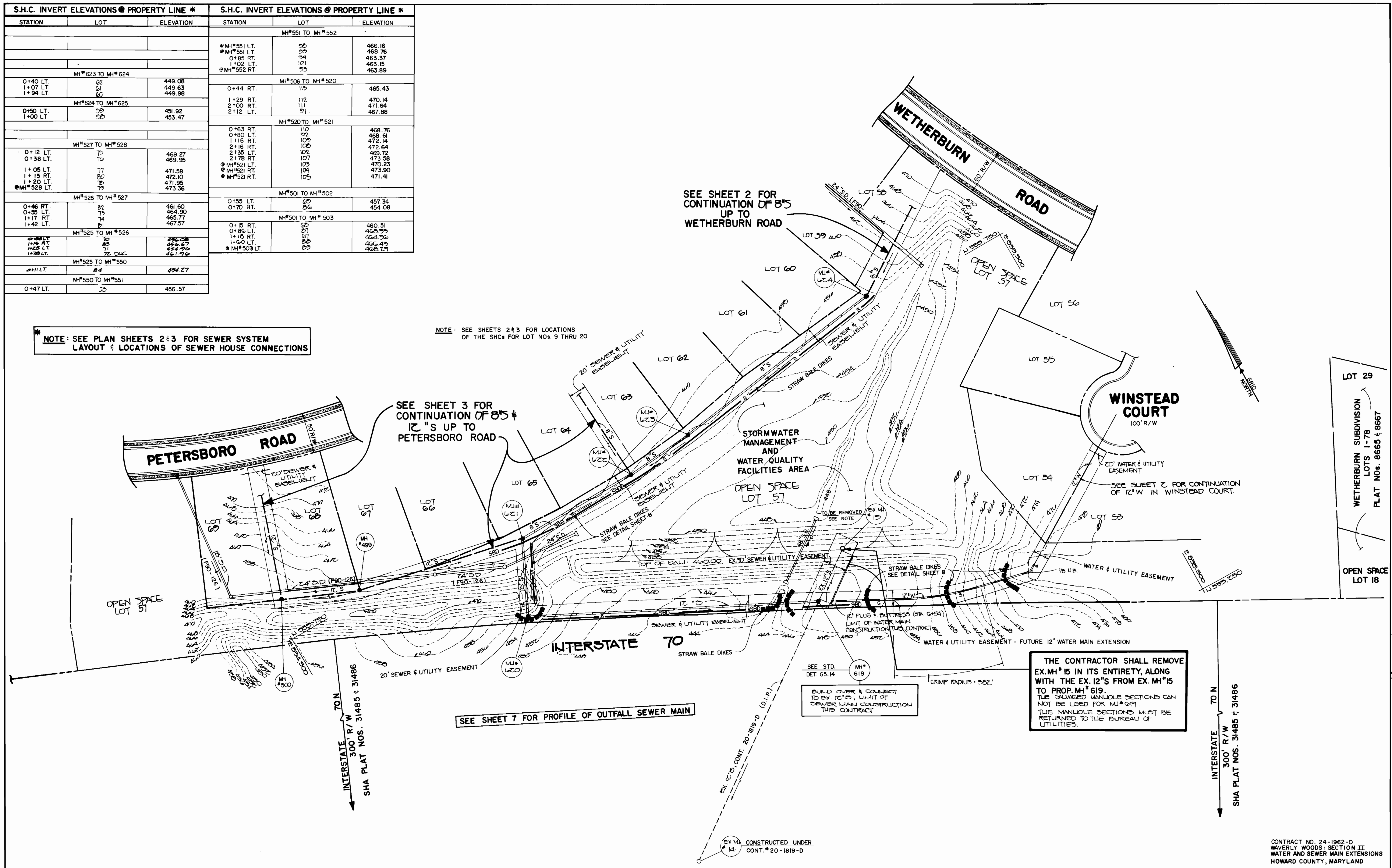
NOTE: SEE SHEETS 2 & 3 FOR LOCATIONS OF THE SHCs FOR LOT NOS. 9 THRU 20

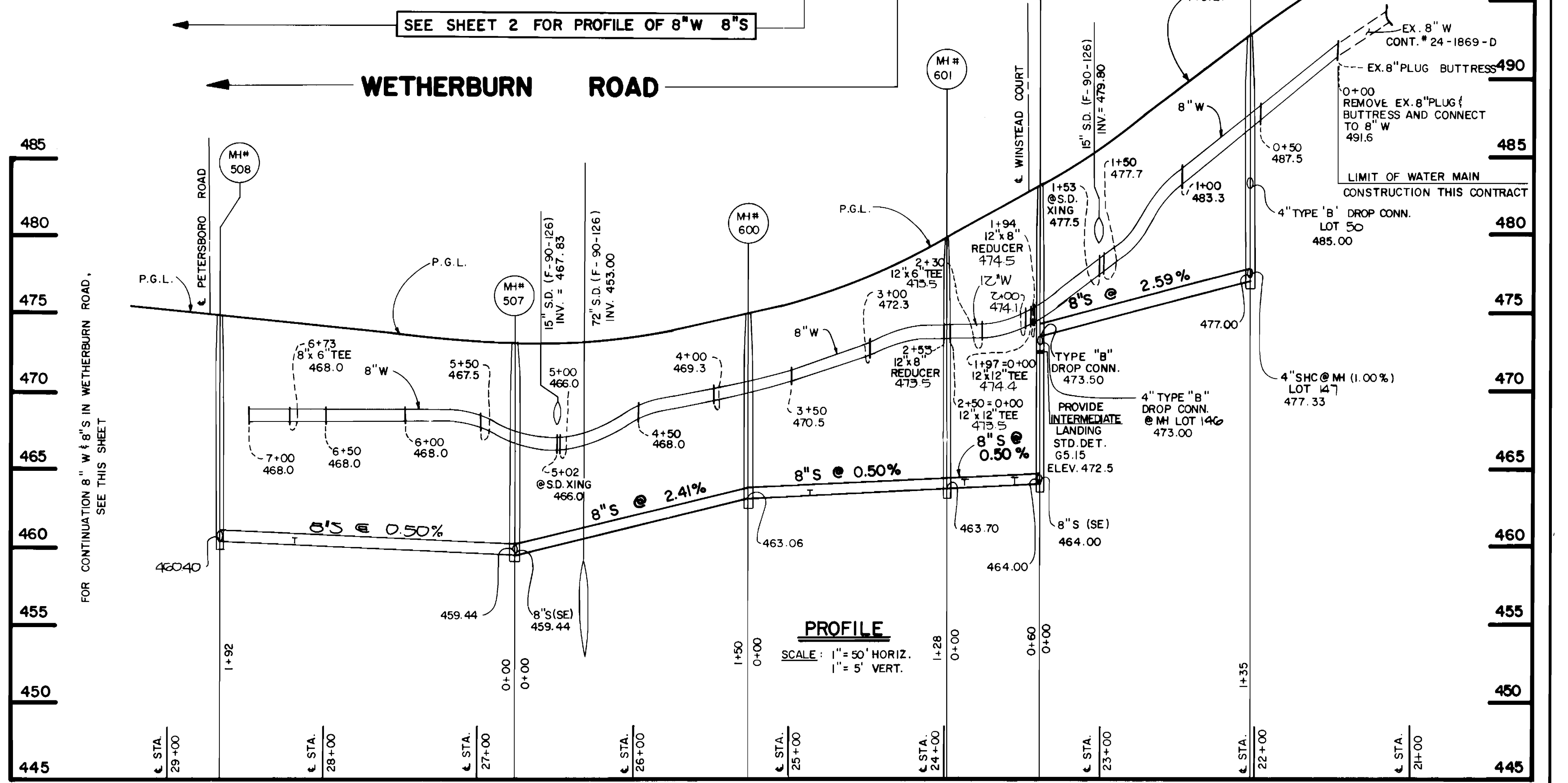
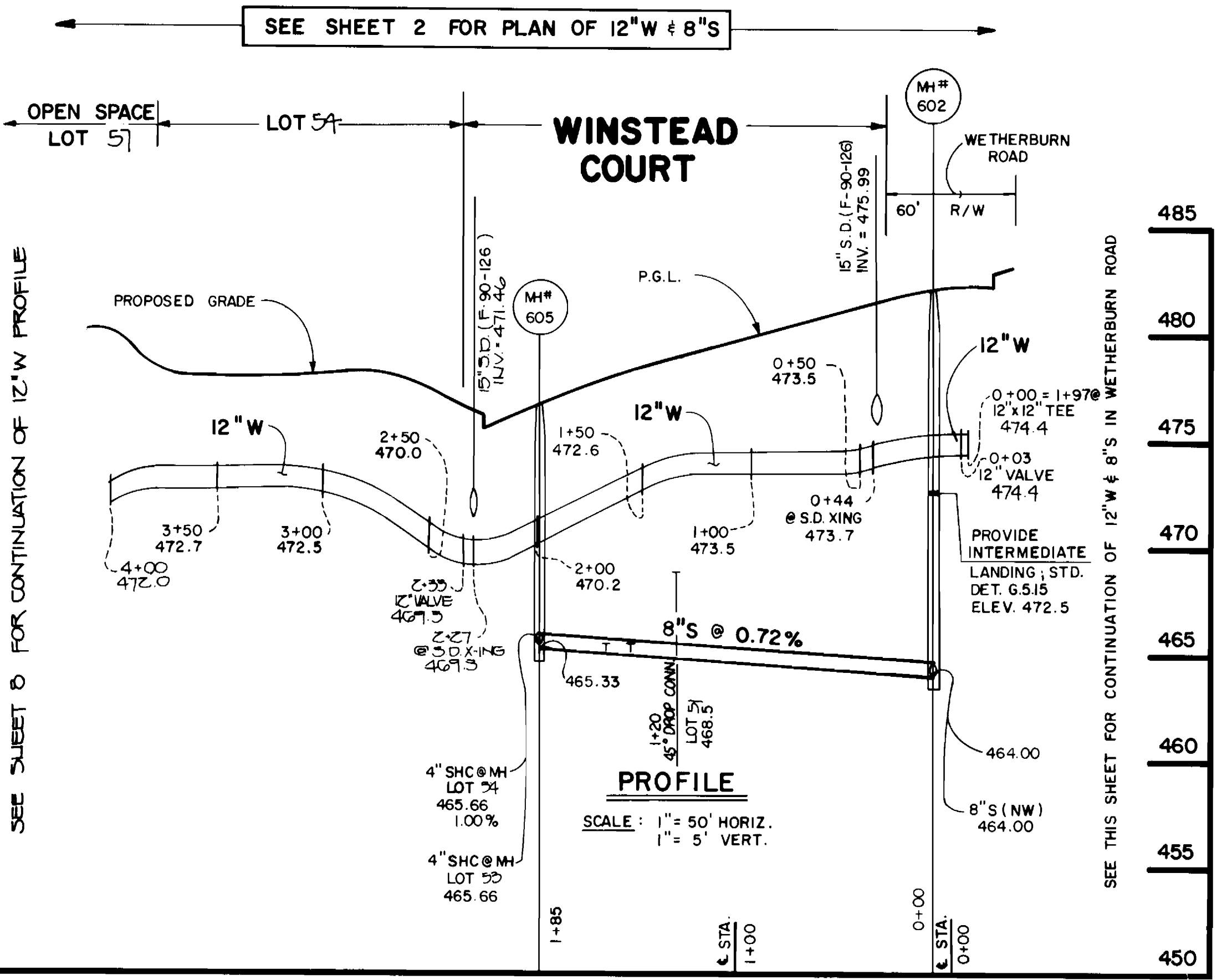
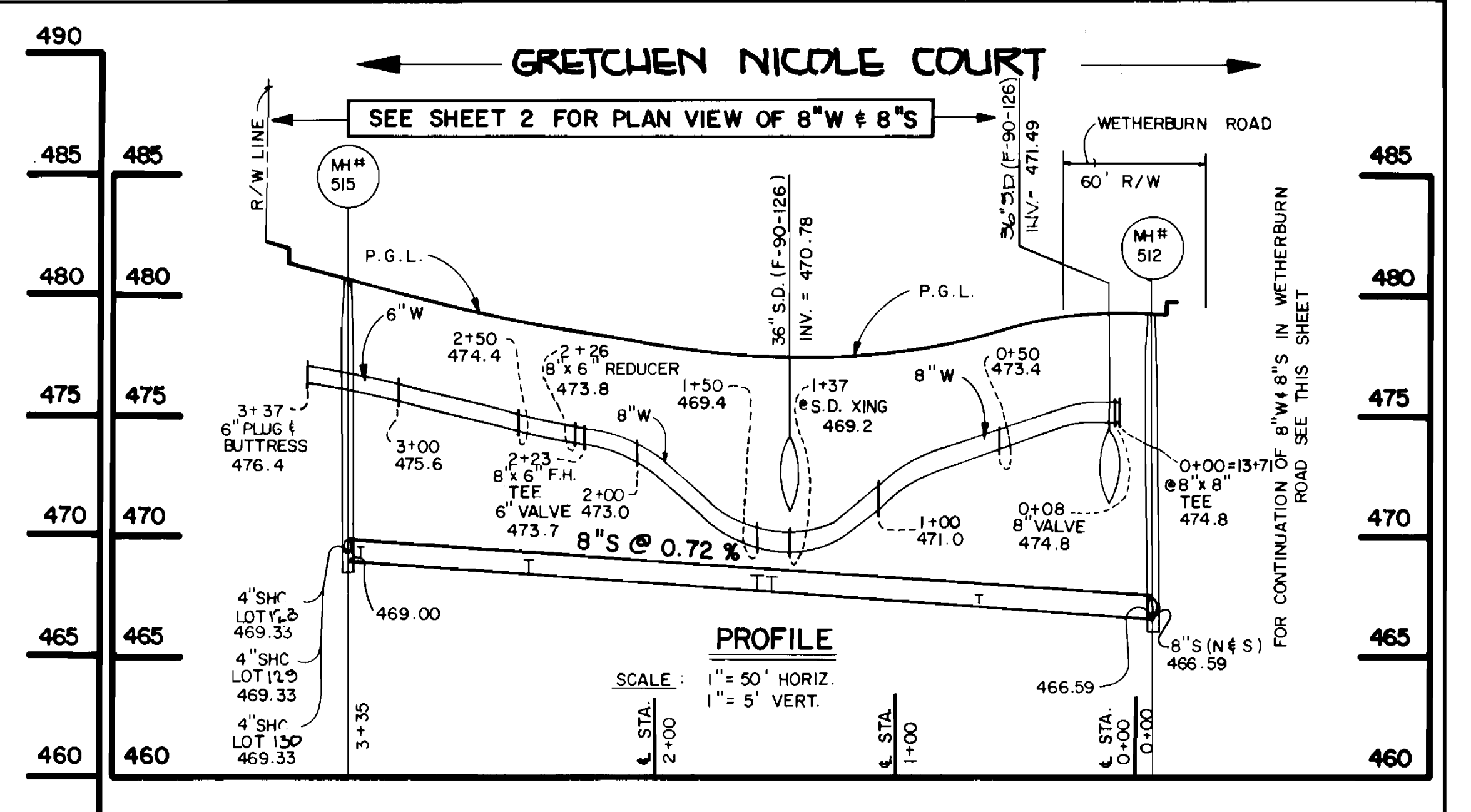
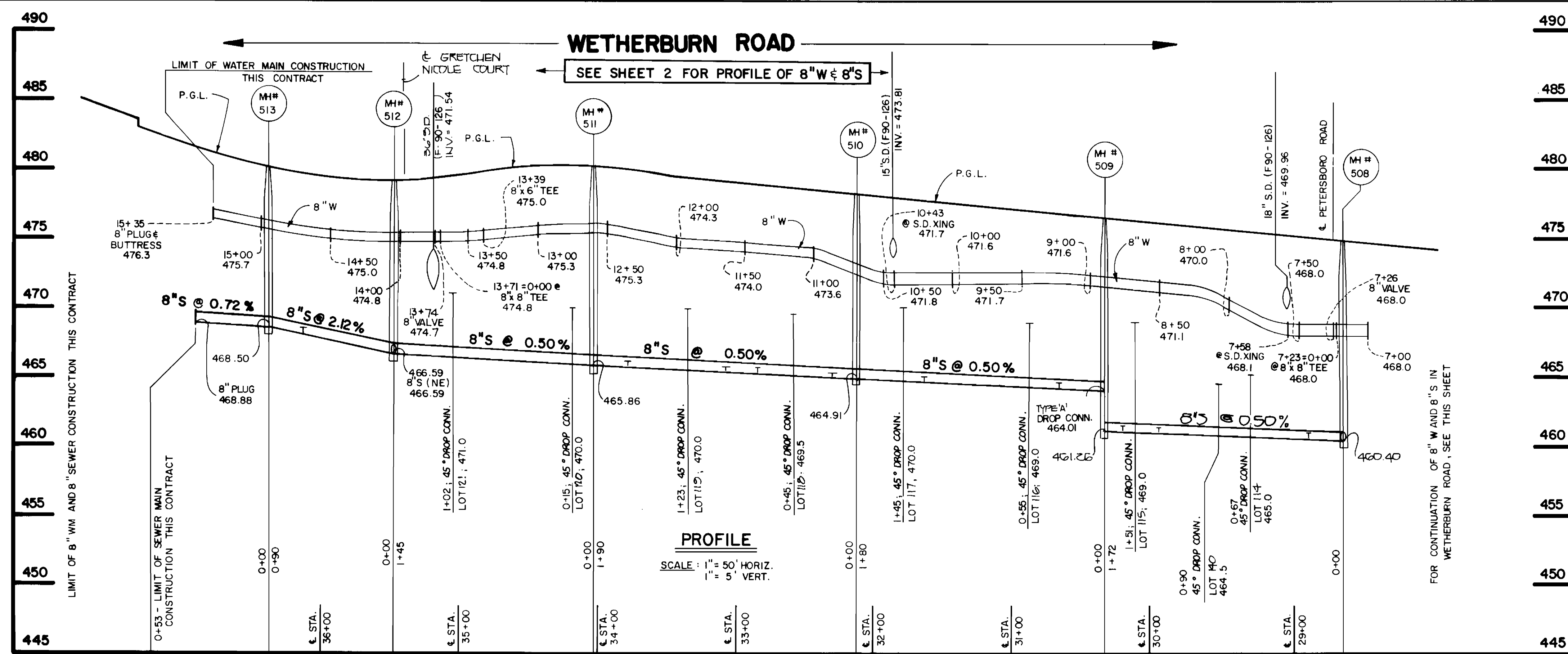
SEE SHEET 3 FOR CONTINUATION OF 8" & 12" S UP TO PETERSBORO ROAD

SEE SHEET 2 FOR CONTINUATION OF 8" S UP TO WETHERBURN ROAD

SEE SHEET 7 FOR PROFILE OF OUTFALL SEWER MAIN

THE CONTRACTOR SHALL REMOVE EX. MH# 15 IN ITS ENTIRETY, ALONG WITH THE EX. 12" S FROM EX. MH# 15 TO PROP. MH# 619. THE SALVAGED MANHOLE SECTIONS CAN NOT BE USED FOR MH# 619. THE MANHOLE SECTIONS MUST BE RETURNED TO THE BUREAU OF UTILITIES.





DEPARTMENT OF PUBLIC WORKS  
 HOWARD COUNTY, MARYLAND  
 Director of Public Works: *Robert J. ...* DATE: 8/17/90  
 Chief, Bureau of Engineering: *...* DATE: 8-10-90  
 Chief, Bureau of Utilities: *...* DATE: 8-10-90

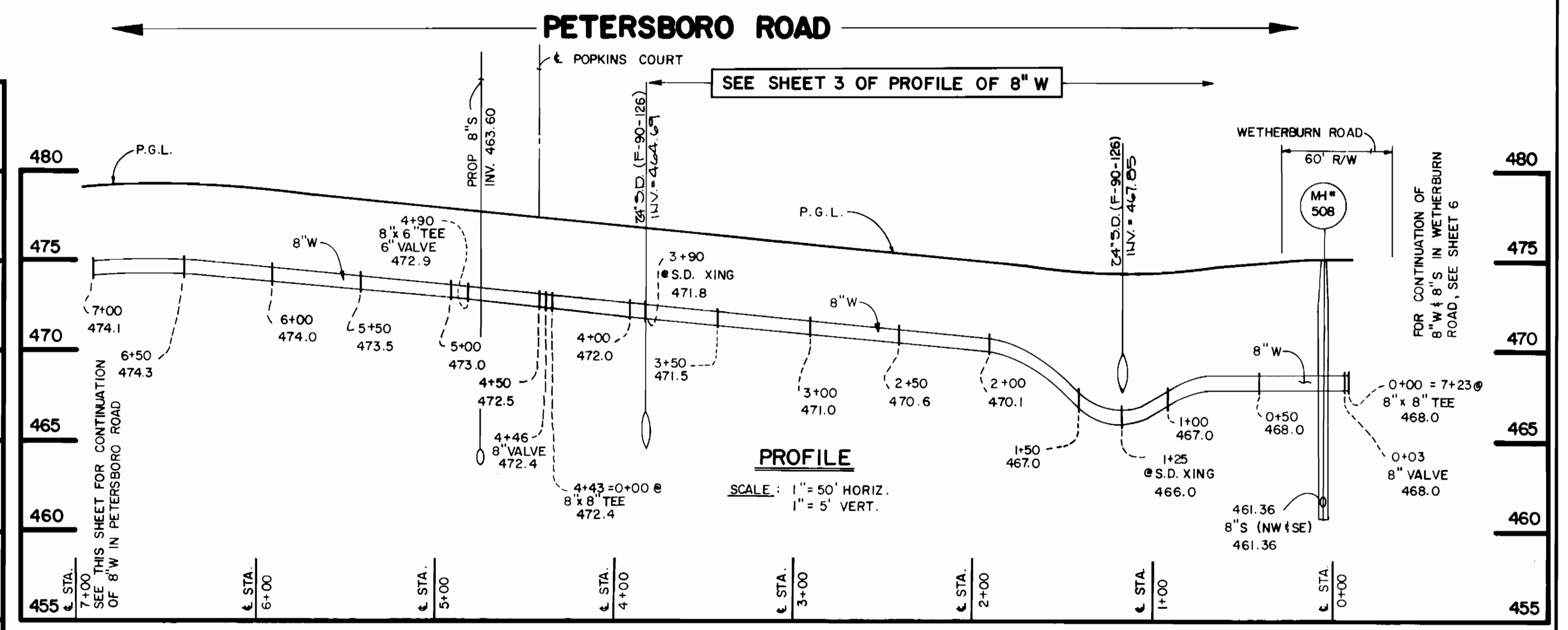
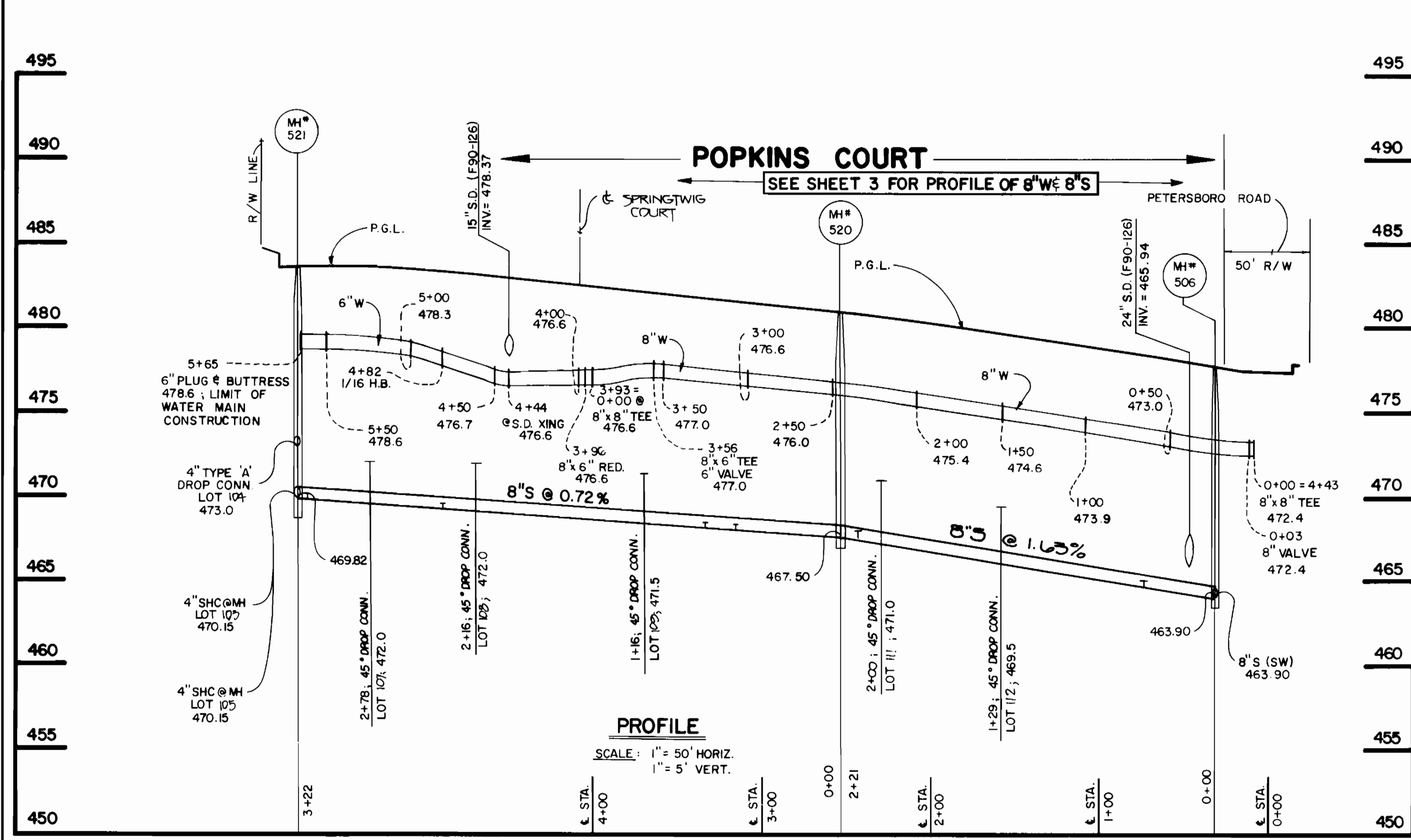
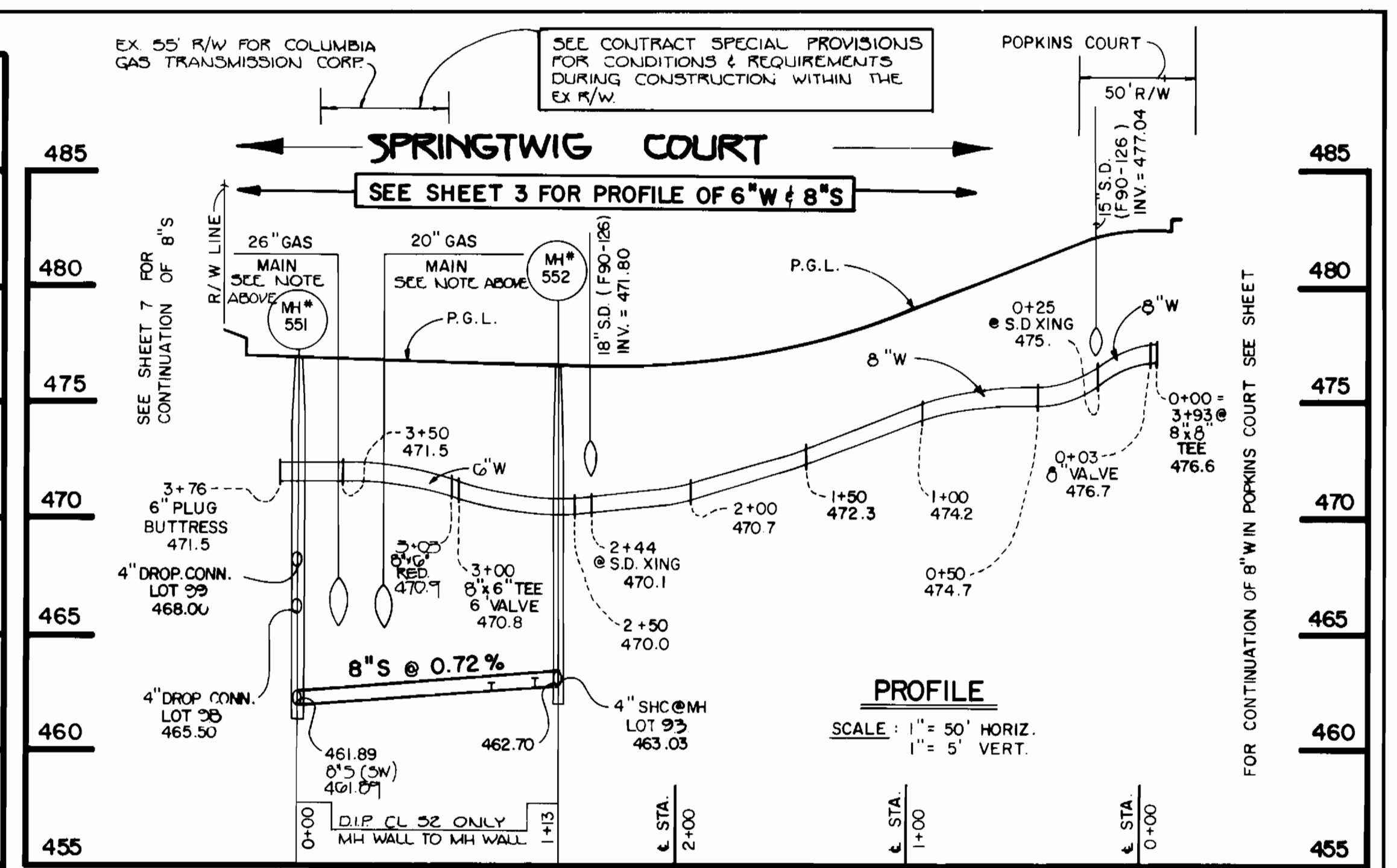
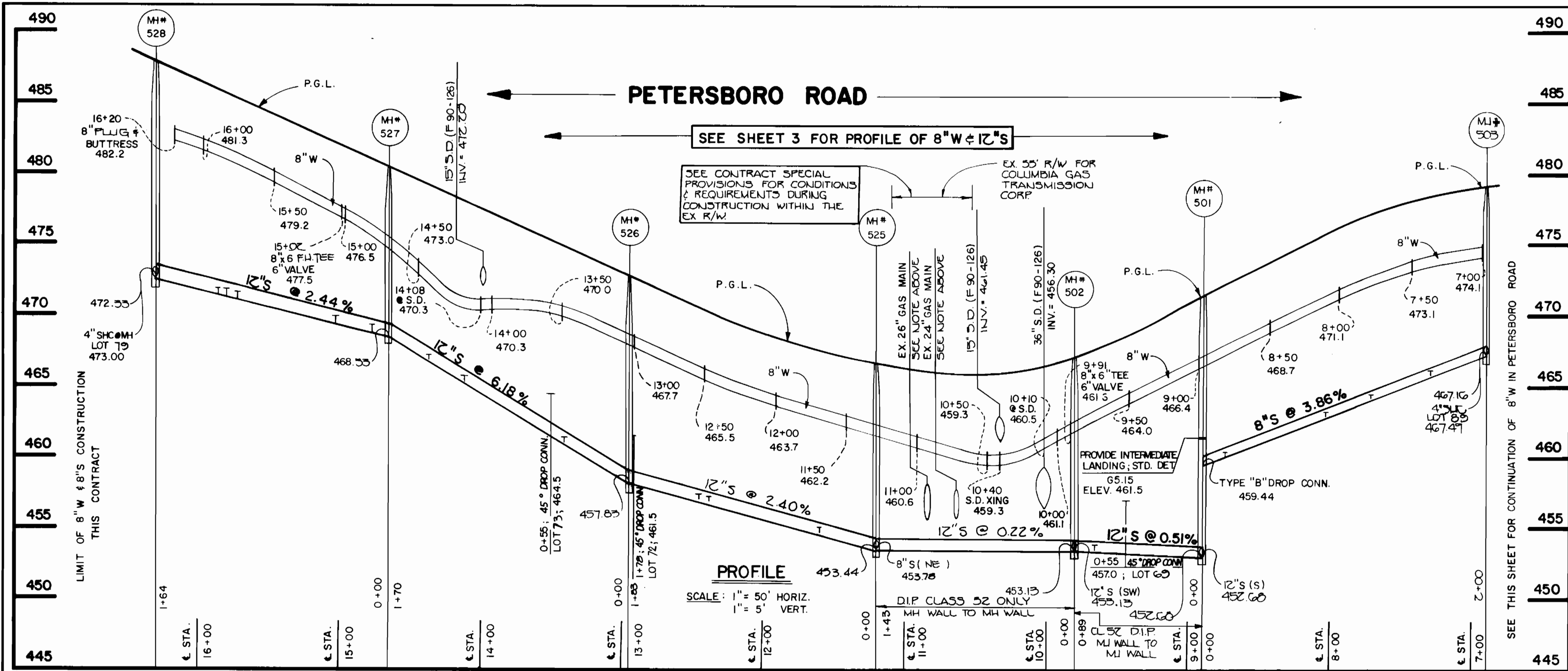
FISHER, COLLINS, AND CARTER, INC.  
 CONSULTING ENGINEERS AND LAND SURVEYORS  
 8388 COURT AVENUE  
 ELLICOTT CITY, MARYLAND 21043  
 #9757  
 Terrell A. Fisher DATE: 8/17/90

DES: MM			
DRN: SH			
CHK: PWK	MJM	CHANGE LOT NUMBERS	11/3/91
DATE:	S.F.H.	CHANGE LOTS 66-72, 91, 65 & 2 TO 45' DHCS.	7/25/91
BY NO.		REVISION	DATE

PROFILES  
 WATER AND SEWER MAINS  
 600 SCALE MAP NO. 17 BLOCK NO.

WAVERLY WOODS  
 SECTION II: LOTS 50-147  
 CONTRACT NO. 24-1962-D  
 SECOND ELECTION DISTRICT  
 HOWARD COUNTY, MARYLAND

SCALE AS SHOWN  
 SHEET 5 OF 8



DEPARTMENT OF PUBLIC WORKS  
HOWARD COUNTY, MARYLAND

*Robert J. ...* 8/17/90  
DIRECTOR OF PUBLIC WORKS DATE

*Robert J. ...* 8-10-90  
CHIEF, BUREAU OF UTILITIES DATE

*...* 8-12-90  
CHIEF, BUREAU OF ENGINEERING DATE

*...* 8/17/90  
CHIEF, LAND DEVELOPMENT DIVISION DATE

FISHER, COLLINS, AND CARTER, INC. #9757  
CONSULTING ENGINEERS AND LAND SURVEYORS  
8388 COURT AVENUE  
ELLICOTT CITY, MARYLAND 21043

*Terrell A. Fisher*  
TERRELL A. FISHER DATE

DES: MM					
DRN: SH					
CHK: PWK	M.Y.	REVISION	REVISION	REVISION	REVISION
	MJM	CHANGE LOT NUMBERS			
	S.F.H.	CHANGE LOTS 23, 24, 20, 58 - 60, 62 & 63 TO 45' DHCS.			
DATE:	BY	NO.	REVISION	DATE	

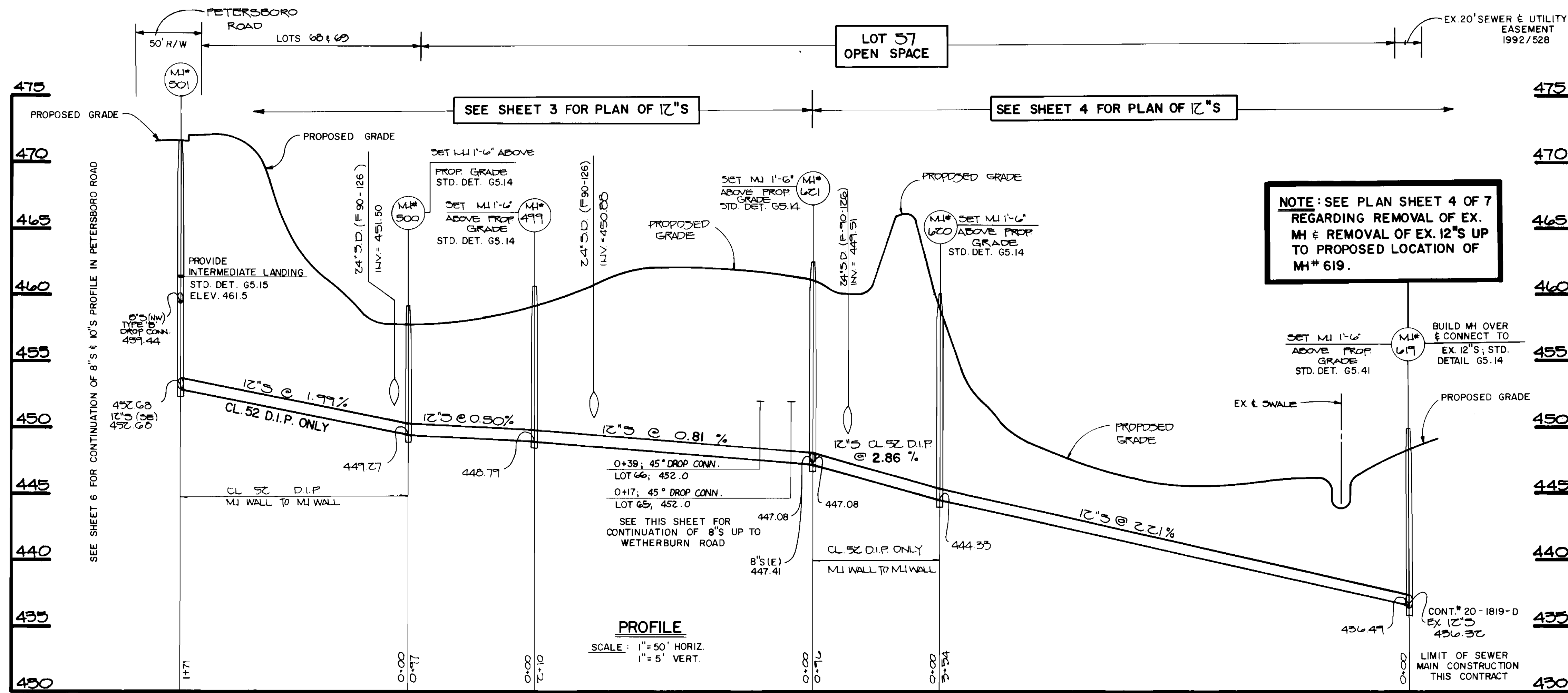
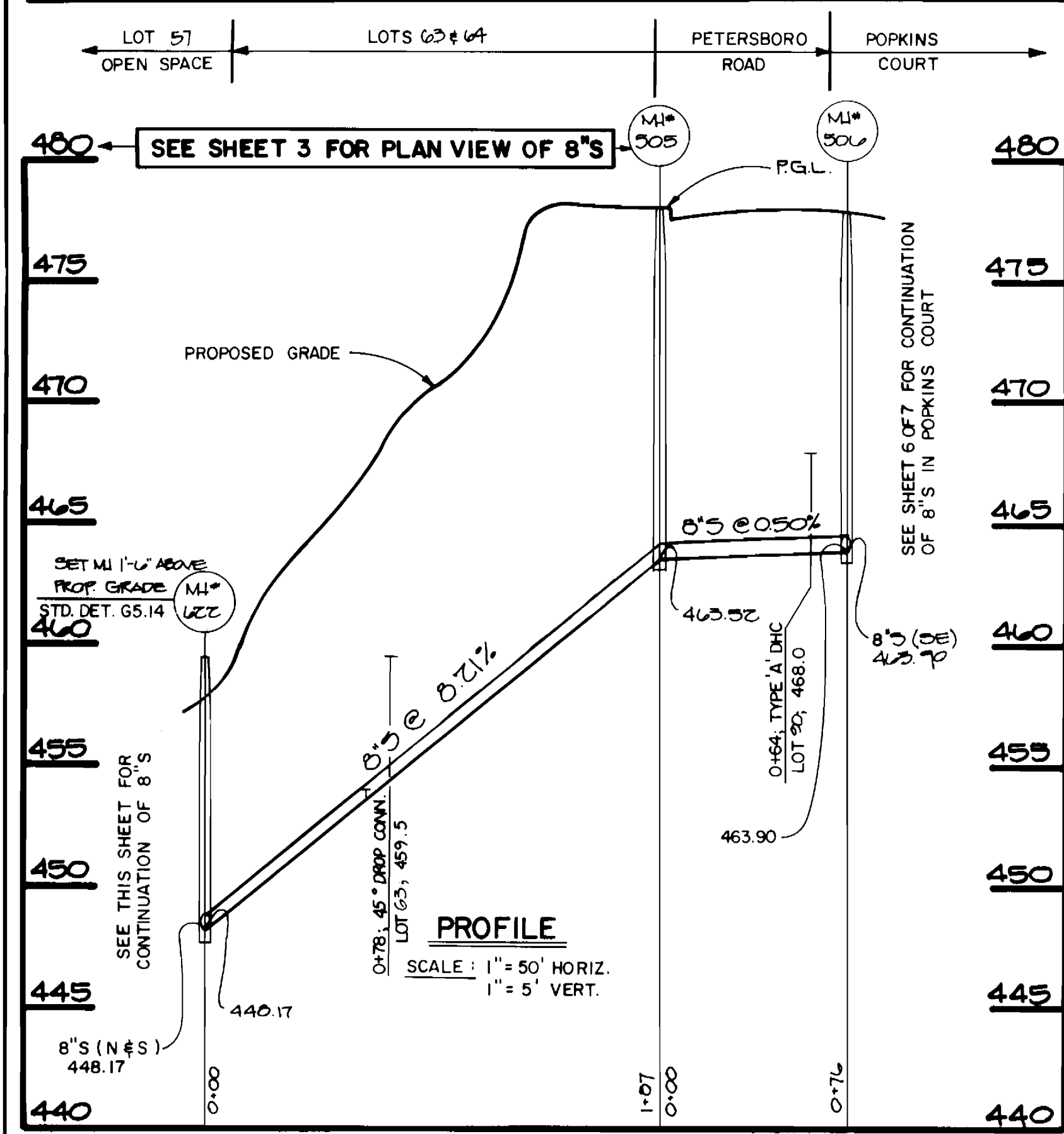
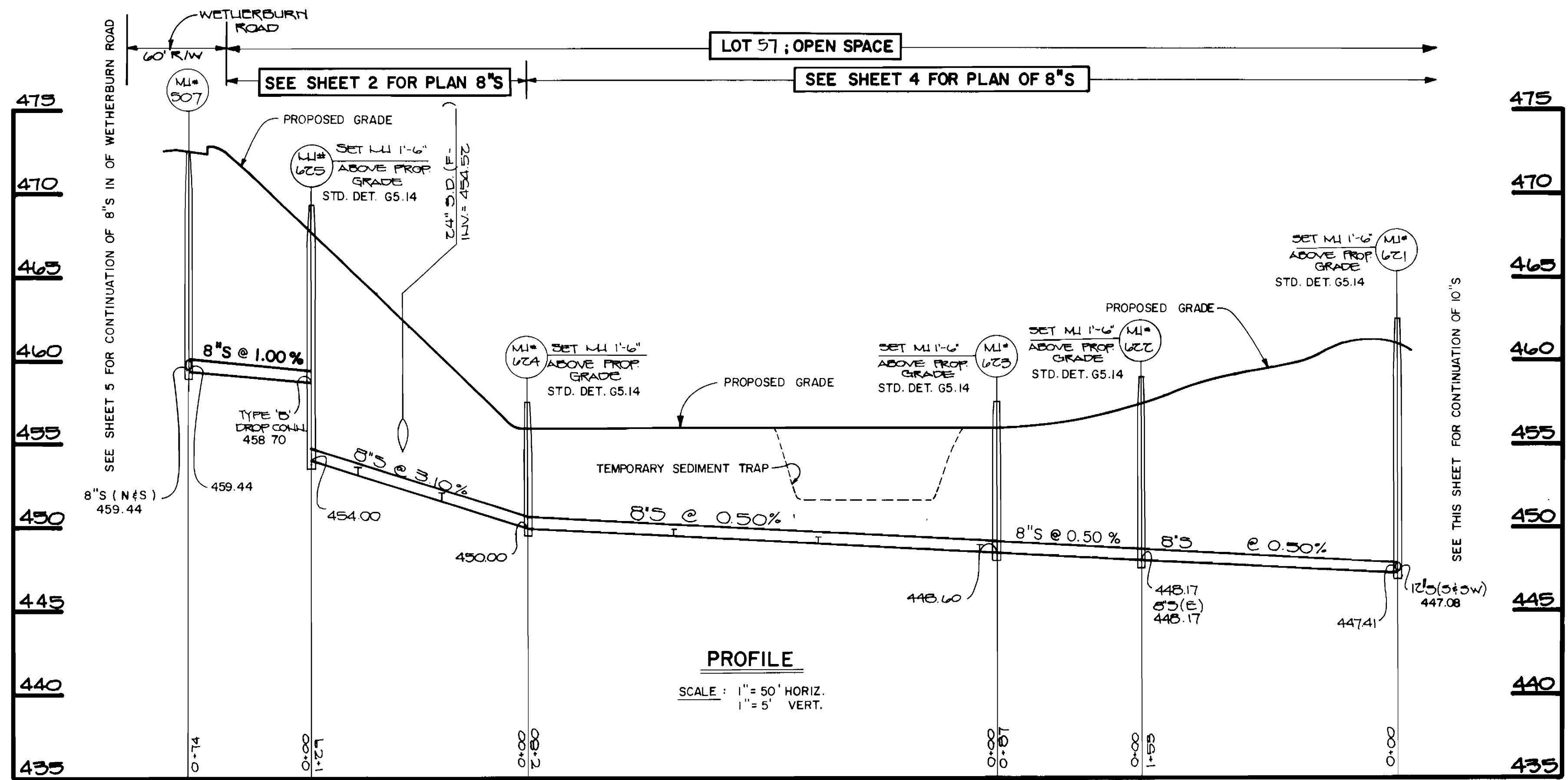
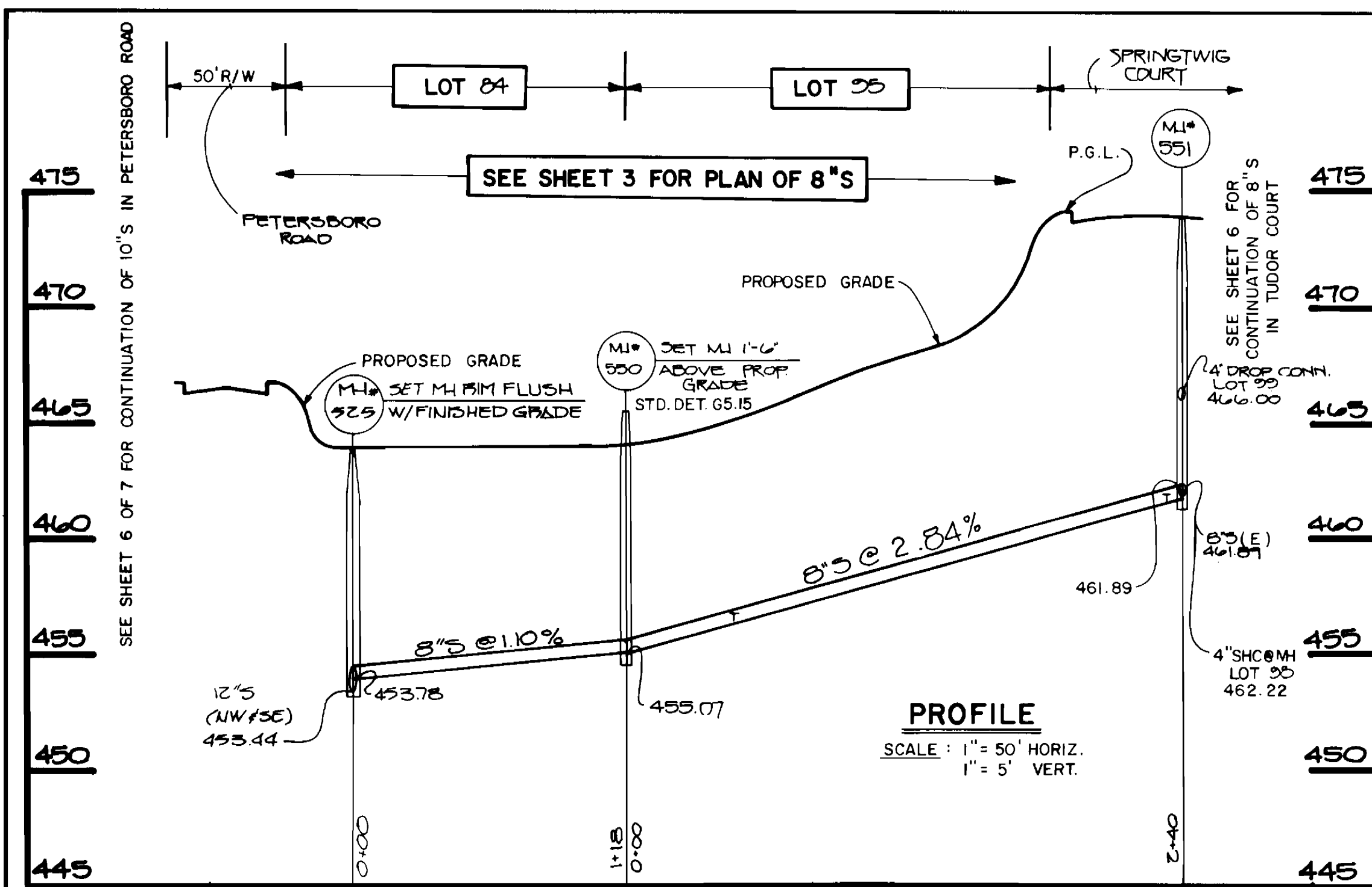
PROFILES  
WATER AND SEWER MAINS

600' SCALE MAP NO. 17 BLOCK NO.

WAVERLY WOODS  
SECTION II: LOTS 50 - 147  
CONTRACT NO. 24-1962-D  
SECOND ELECTION DISTRICT  
HOWARD COUNTY, MARYLAND

SCALE AS SHOWN  
SHEET 6 OF 8

CONTRACT NO. 24-1962-D  
WAVERLY WOODS  
SECTION II: LOTS 50 - 147  
WATER AND SEWER MAIN EXTENSIONS  
HOWARD COUNTY, MARYLAND



**NOTE: SEE PLAN SHEET 4 OF 7 REGARDING REMOVAL OF EX. MH # 619. REMOVE OF EX. 12" S UP TO PROPOSED LOCATION OF MH # 619.**

DEPARTMENT OF PUBLIC WORKS  
HOWARD COUNTY, MARYLAND  
8/17/90  
DIRECTOR OF PUBLIC WORKS  
8-10-90  
CHIEF, BUREAU OF UTILITIES

FISHER, COLLINS, AND CARTER, INC.  
CONSULTING ENGINEERS AND LAND SURVEYORS  
8388 COURT AVENUE  
ELLCOTT CITY, MARYLAND 21043  
TERRELL A. FISHER  
DATE

DES: M. J. M.				
DRN: M. J. M.				
CHK: P.W.K.	MY	REVISE MH 525	12/19/91	
	MJM	CHANGE LOT NUMBERS	11/3/91	
	S.F.H.	CHANGE LOTS 14, 16 & 17 TO 45" DHCS.	7/26/91	
DATE:	BY NO.	REVISION	DATE	

PROFILES  
WATER AND SEWER MAINS  
600' SCALE MAP NO. 17 BLOCK NO.

WAVERLY WOODS  
SECTION II: LOTS 50-147  
CONTRACT NO. 24-1962-D  
SECOND ELECTION DISTRICT  
HOWARD COUNTY, MARYLAND

SCALE AS SHOWN  
SHEET 7 OF 8

