

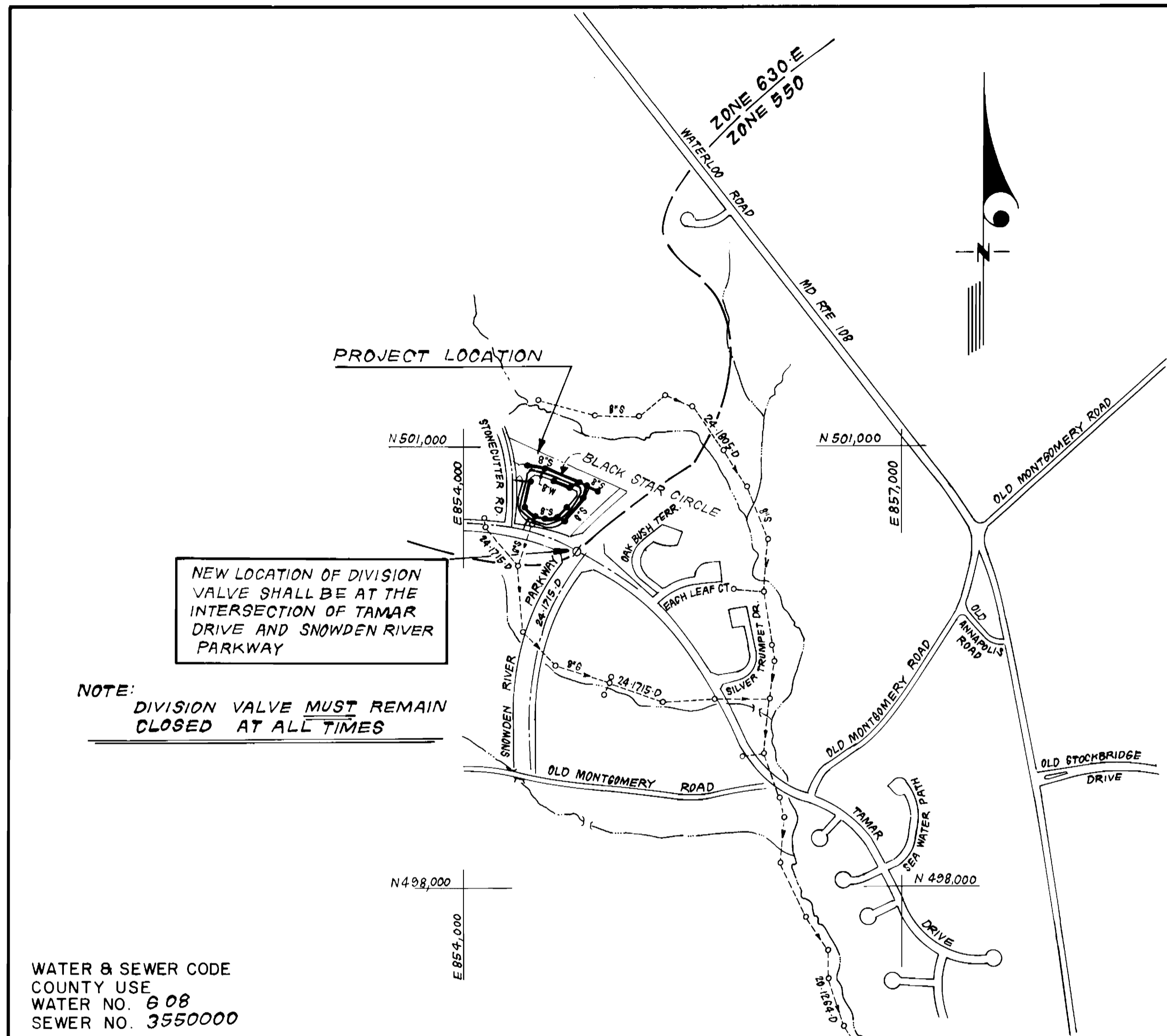
**SEWER HOUSE CONNECTION TABLE**

LOTS	Inv. at R.	Min. C.	LOTS	Inv. at R.	Min. C.
B-1	402.0	405.2	B-34	395.9	398.9
B-2	401.8	405.0	B-35	395.7	398.8
B-3	401.1	404.2	B-36	395.5	398.6
B-4	400.8	403.9	B-37	395.5	398.6
B-5	400.3	403.5	B-38	395.4	398.5
B-6	400.0	403.1	B-39	395.3	398.4
B-7	399.5	402.6	B-40	395.4	398.5
B-8	398.6	401.7	B-41	395.4	398.4
B-9	398.4	401.5	B-42	397.6	400.6
B-10	398.1	401.1	B-43	396.9	399.9
B-11	398.1	401.2	B-44	396.1	399.1
B-12	397.9	400.9	B-45	399.9	402.9
B-13	397.7	400.7	B-46	400.5	403.6
B-14	397.6	400.7	B-47	402.4	405.5
B-15	397.5	400.5	B-48	401.9	405.0
B-16	397.4	400.4	B-49	401.9	405.0
B-17	397.3	400.4	B-50	401.9	405.0
B-18	397.2	400.2	B-51	402.3	405.4
B-19	397.1	400.2	B-52	403.3	406.3
B-20	397.2	400.2	B-53	400.0	403.0
B-21	396.8	399.8	B-54	400.1	403.2
B-22	396.7	399.7	B-55	400.2	403.4
B-23	396.7	399.7	B-56	400.6	403.6
B-24	396.7	399.7	B-57	401.1	404.1
B-25	396.8	399.8	B-58	401.2	404.2
B-26	396.9	399.9	B-59	399.0	402.0
B-27	397.4	400.4	B-60	398.9	401.9
B-28	397.4	400.2	B-61	398.4	401.5
B-29	396.8	400.0	B-62	398.2	401.2
B-30	396.5	399.6	B-63	398.0	401.0
B-31	396.5	399.6	B-64	397.8	400.9
B-32	396.1	399.3	B-65	397.6	400.6
B-33	396.0	399.1	B-66	397.5	400.5

TYPE OF BUILDING	TOWNHOUSES
NO. OF LOTS	66
NO. OF WHC's	66
NO. OF SHC's	66
DRAINAGE AREA	LITTLE PATUXENT

**GENERAL NOTES**

- Approximate location of existing mains are shown. The contractor shall take all necessary precautions to protect existing mains and services and maintain uninterrupted supply. Any damage incurred shall be repaired immediately to the satisfaction of the Inspector, at the contractor's expense.
- All horizontal controls are based on Maryland State Coordinates.
- All vertical controls are based on U.S.G.S. Datum.
- All pipe elevations shown are invert elevations.
- Clear all utilities by a minimum of 6" clear all poles by 2'-0" minimum or tunnel as required. Any cost incurred to the contractor for tunneling or bracing at poles shall be included in unit prices bid for excavation and backfill.
- For details not shown on the drawings use Howard County Standard Details.
- For materials and construction methods use Howard County Standard Specifications and Howard County Design Manual, Volume IV, 1989 Amendments. The Contractor shall have Volume IV, 1989 Amend. on the job site.
- Contractor shall locate existing utilities a minimum of two (2) weeks in advance of construction operations in the vicinity of proposed utilities at his own expense.
- Contractor shall notify the following utilities or agencies at least five (5) working days before starting work shown on these plans.
  - State Highway Administration - 531-5533
  - Baltimore Gas & Electric Company - Underground Damage Control - 859-9004
  - Baltimore Gas & Electric Company - Contractor Services - 850-4620
  - Baltimore Gas & Electric Company - Trouble Shooting - 298-9001
  - "Miss Utility" - 1-800-257-7777
  - Chesapeake & Potomac (C & P) Telephone Company - 1-800-257-7777
  - Bureau of Utilities Howard County - 992-2366
  - Colonial Pipeline Company - 795-1390
- Trees are to be protected from damage to maximum extent. Trees located within the construction strip are not to be removed or damaged by the contractor.
- Contractor shall remove trees, stumps, and roots along line of excavation as directed by the Inspector. Payment for such removal shall be included in the unit price bid for excavation and backfill.
- Place regulation "Men Working" and warning signs as required to comply with Maryland State Highway Administration Manual of Traffic Control for Highway Construction and Maintenance Operations.
- All water mains to be D.I.P. Class 52 unless otherwise noted.
- Top of all water mains to have a minimum of 3'-1/2' cover unless otherwise noted.
- Valves adjacent to tees shall be strapped to tees.
- Block all fittings with concrete.
- Bury line elevations on fire hydrants shall be set to the elevations shown on the drawings. All fire hydrants shall be strapped and buttressed with concrete in accordance with standard details. Soil around the fire hydrant to be compacted in accordance with Sections 1000 & 1005 of the Standard Specifications.
- All water house connections shall be for an inside meter setting.
- The contractor shall not operate any water main valves on the existing system.
- All sewer mains shall be C.S.P.X., V.C.P.X., or P.V.C. unless otherwise noted.
- The contractor shall provide a joint in all sewer mains within 2'-0" of exterior manhole wall.
- All manholes shall be 4'-0" inside diameter, unless otherwise noted.
- Water main and water house connection lines must have a minimum of one foot separation from the sanitary sewer and sewer house connections as they cross. Except at crossings, water and sewer lines shall have a minimum horizontal separation of 10'.
- Manholes designated thus: WT, shall have a Watertight Frame and Cover.
- All D.I.P. Fittings shall be in accordance with AWWA specification C-153 Ductile Iron Compact Fittings, 3-inch through 12-inch for water and other liquids.
- All sewer house connections shall be 4-inch dia.

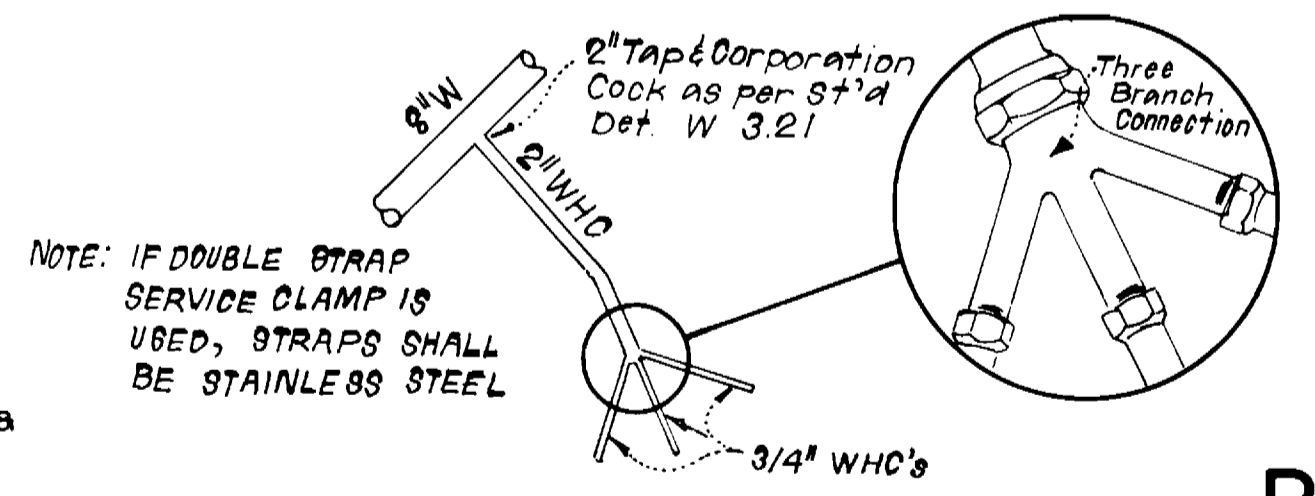


NEW LOCATION OF DIVISION VALVE SHALL BE AT THE INTERSECTION OF TAMAR DRIVE AND SNOWDEN RIVER PARKWAY

NOTE: DIVISION VALVE MUST REMAIN CLOSED AT ALL TIMES

WATER & SEWER CODE  
COUNTY USE  
WATER NO. 608  
SEWER NO. 3550000

**VICINITY MAP**  
SCALE: 1" = 600'



**CONTRACT NO. 24-1959-D**  
**VILLAGE OF LONGREACH**  
**SECTION 3 AREA 2**  
**PARCEL B, LOTS B-1 THRU B-68**  
**HOWARD COUNTY, MARYLAND**  
**DEPARTMENT OF PUBLIC WORKS**

**3-WAY WHC DETAIL**  
LOTS B-1, B-2, B-3 and B-26, B-27 & B-28  
NO SCALE

QUANTITIES			
ITEM	EST'D	AS BUILT	MATERIAL / SUPPLIER
8" W	1,001 LF	1,002 LF	ATLANTIC STATES / A + P WATER SUPPLY
6" W	381 LF	381 LF	ATLANTIC STATES / A + P WATER SUPPLY
8" S	1,680 LF	1,680 LF	H + W + NATIONAL / MUNICIPAL + CONTRACTORS
4" SHC	1,115 LF	1,045 LF	H + W + NATIONAL / MUNICIPAL + CONTRACTORS
2" WHC	110 LF	N/A	N/A / N/A
1" WHC	805 LF	765 LF	CAMBRIDGE LEE / MUNICIPAL + CONTRACTORS
3/4" WHC	835 LF	1,005 LF	CAMBRIDGE LEE / MUNICIPAL + CONTRACTORS
FIRE HYDRANT	4 EA	4 EA	KENNEDY / MUNICIPAL + CONTRACTORS
4'-0" DIA. M.H.	15 EA	15 EA	ATLANTIC CONCRETE / ATLANTIC CONCRETE
8" V	3 EA	3 EA	KENNEDY / MUNICIPAL + CONTRACTORS
6" V (exclu. F.H.)	2 EA	2 EA	KENNEDY / MUNICIPAL + CONTRACTORS
8" DC. TYPE "B"	1 EA	1 EA	

Sediment Control Measures will be implemented in accordance with Section 219 of the Specifications & with Road Construction Plan F-90-33; Drawing, Sediment & Erosion Control.

REVIEWED FOR HOWARD SOIL CONSERVATION DISTRICT AND MEETS TECHNICAL REQUIREMENT  
*John A. [Signature]* 10/26/89  
SIGNATURE DATE

U.S. SOIL CONSERVATION SERVICE  
This Development Plan is approved for Soil Erosion and Sediment Control by the Howard Soil Conservation District.

APPROVED:  
*John A. [Signature]* 10/26/89  
Howard S.C.D. DATE

DEPARTMENT OF PUBLIC WORKS  
HOWARD COUNTY, MARYLAND

*James [Signature]* 10/31/89  
DIRECTOR OF PUBLIC WORKS DATE

*[Signature]* 10/30/89  
CHIEF, BUREAU OF ENGINEERING DATE

*[Signature]* 10/30/89  
CHIEF, BUREAU OF UTILITIES DATE

*[Signature]* 10/30/89  
CHIEF, LAND DEVELOPMENT DIV. DATE

**CFS** CLARK - FINEPROCK & SACKETT, INC.  
ENGINEERS - PLANNERS - SURVEYORS

7155 MINSTREL WAY COLUMBIA MARYLAND 21045  
(301) 381-7500 BALTO. (301) 621-8100 WASH.



DES: JTR			
DRN: JTR			
CHK: CCM			
DATE: JUL 89	BY: NO.	REVISION	DATE

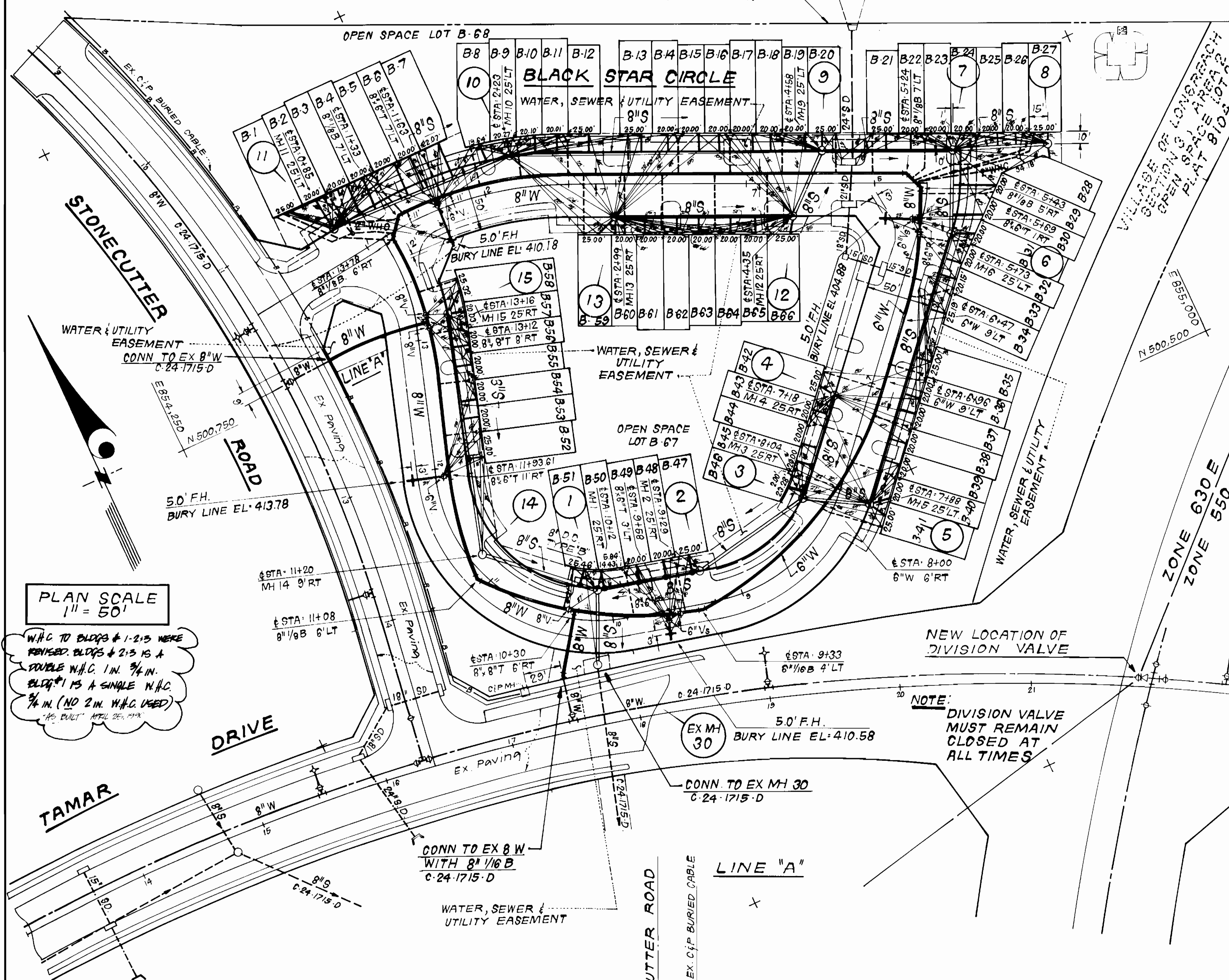
TITLE SHEET

600' SCALE MAP NO. 37 BLOCK NO.

COLUMBIA  
VILLAGE OF LONGREACH  
SECTION 3 AREA 2  
PARCEL B, LOTS B-1 THRU B-68  
6<sup>TH</sup> ELECTION DISTRICT  
CONTRACT NO. 24-1959-D

SCALE AS SHOWN  
SHEET 1 OF 3

50' BALTIMORE GAS AND ELECTRIC CO. RIGHT OF WAY



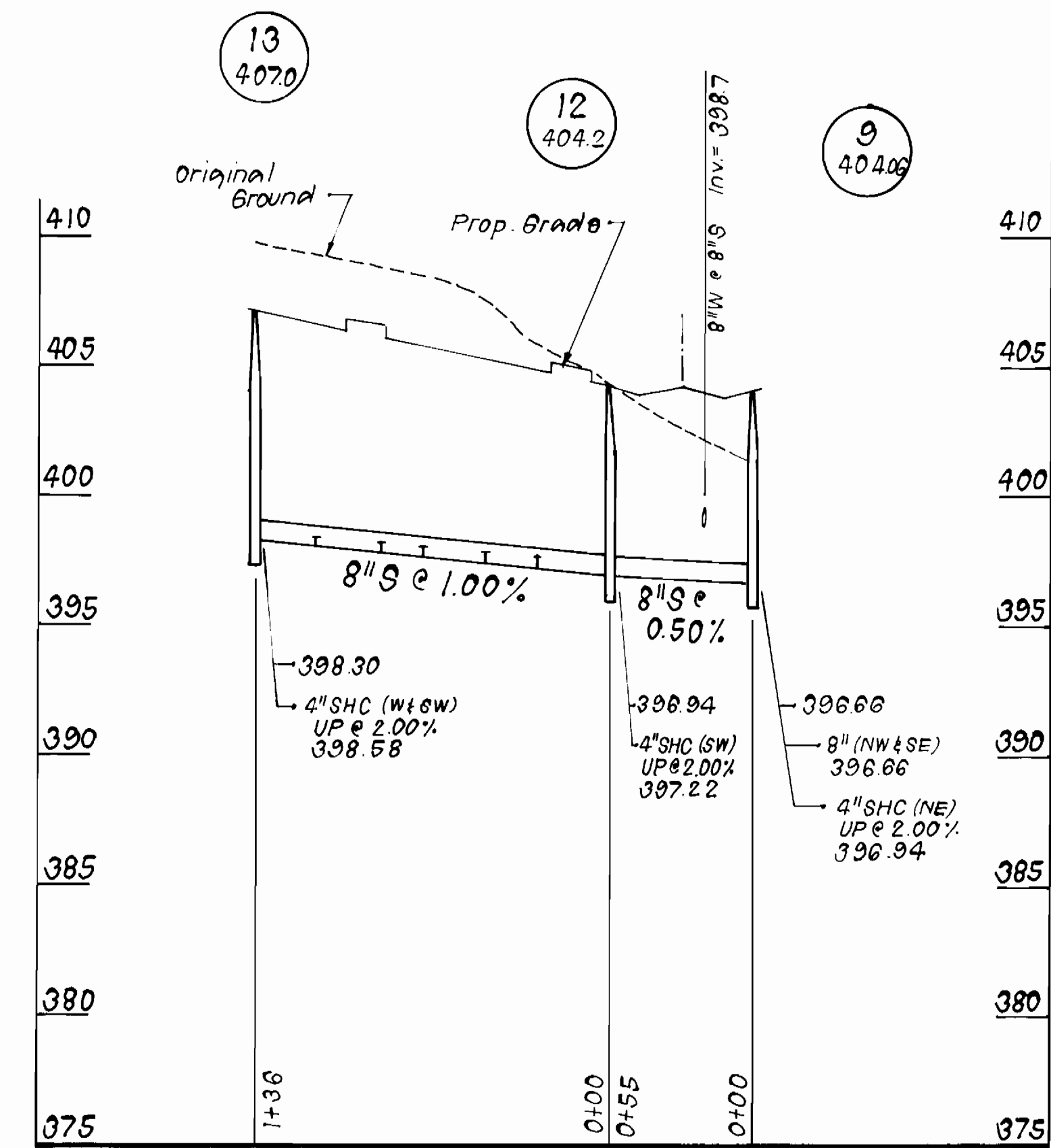
PLAN SCALE  
1" = 50'

W.H.C. TO BLDGS # 1-2, 5 WERE  
REVISED. BLDGS # 2, 5 IS A  
DOUBLE W.H.C. 1 IN. 3/4 IN.  
BLDG # 1 IS A SINGLE W.H.C.  
3/4 IN. (NO 2 IN. W.H.C. USED)  
"NO. 1" APRIL 25, 1978

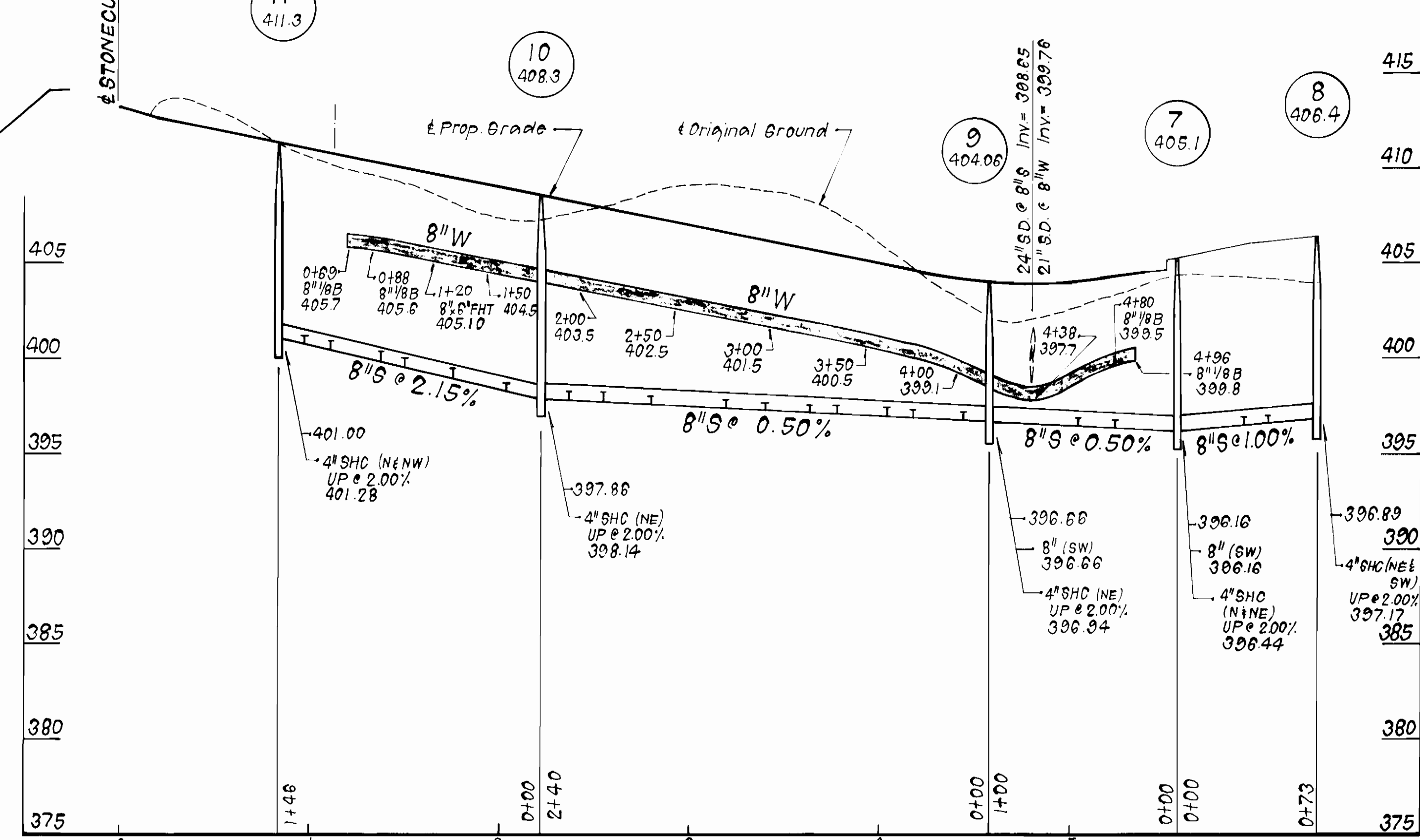
NOTE:  
DIVISION VALVE  
MUST REMAIN  
CLOSED AT  
ALL TIMES

NOTE: S.H.C.'S TO LOTS B-45 THRU B-52  
SHALL BE DROP HOUSE CONNECTIONS  
SEE STD DET. S-2.12

BLACK STAR CIRCLE



BLACK STAR CIRCLE



PROFILE SCALE  
HORIZONTAL: 1" = 50'  
VERTICAL: 1" = 5'

DEPARTMENT OF PUBLIC WORKS  
HOWARD COUNTY, MARYLAND

Director of Public Works: *[Signature]* DATE: 10/21/89  
Chief, Bureau of Engineering: *[Signature]* DATE: 10/30/89  
Chief, Bureau of Utilities: *[Signature]* DATE: 10/25/89  
Chief, Land Development Div.: *[Signature]* DATE: 10/30/89

CLARK - FINEPROCK & SACKETT, INC.  
ENGINEERS - PLANNERS - SURVEYORS

7135 MINSTREL WAY COLUMBIA MARYLAND 21045  
(301) 381-7500 BALTO. (301) 621-8100 WASH.



DES: JTR			
DRN: JTR			
CHK: CCM			
DATE: JUL 89	BY: NO.	REVISION	DATE

PLAN & PROFILE OF  
WATER & SEWER MAINS

600' SCALE MAP NO. 37 BLOCK NO.

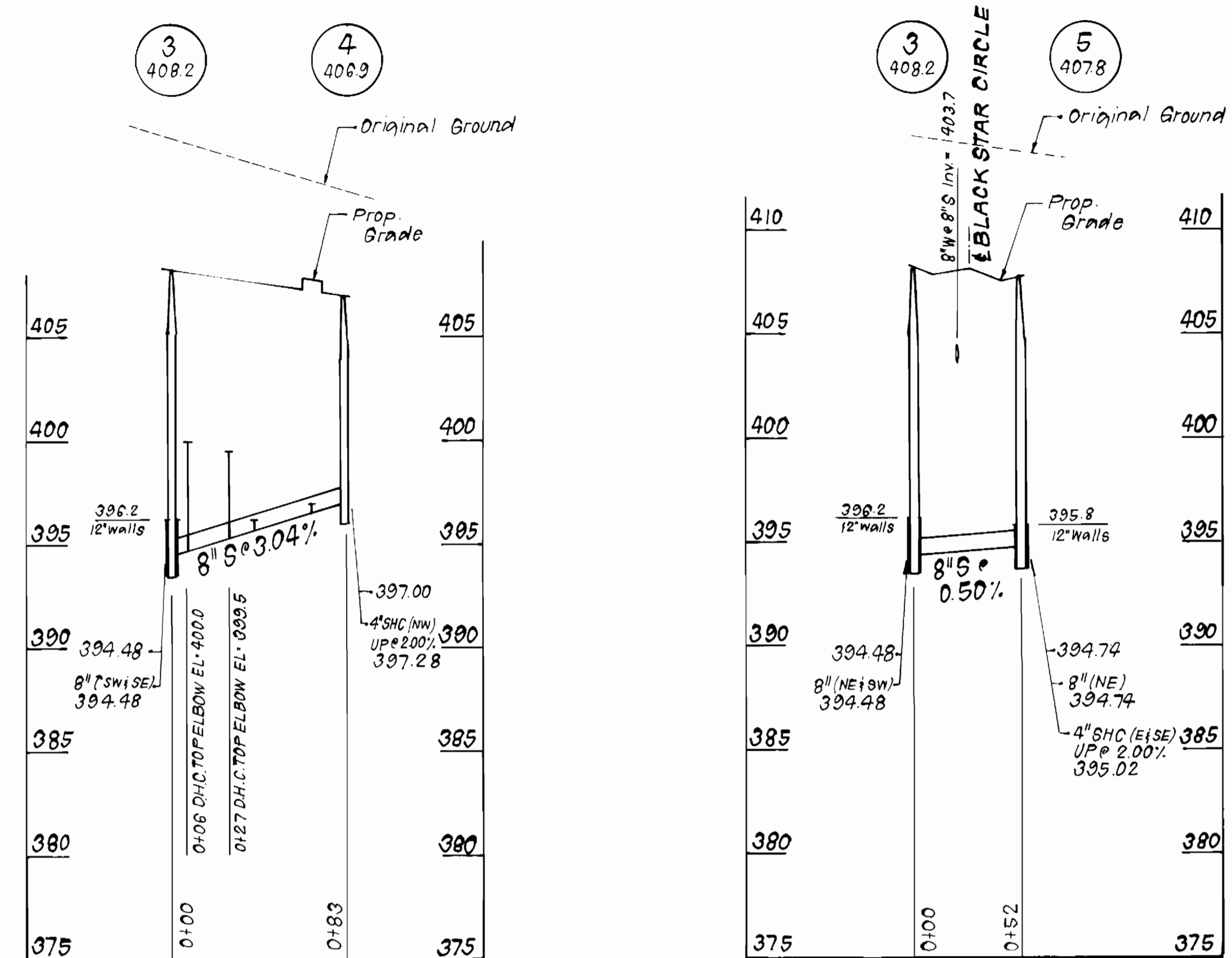
COLUMBIA  
VILLAGE OF LONGREACH  
SECTION 3 AREA 2  
PARCEL B, LOTS B-1 THRU B-68  
6<sup>TH</sup> ELECTION DISTRICT  
CONTRACT NO. 24-1959-D

SCALE  
AS SHOWN

SHEET  
2 OF 3

AS-BUILT

**BLACK STAR CIRCLE**



NOTE: IF BRICK CONSTRUCTION IS UTILIZED, MANHOLES 1, 2, 3, 5 AND 14 SHALL HAVE 12 INCH THICK WALLS TO ELEVATION SHOWN ON PROFILE.

PROFILE SCALE  
HORIZONTAL: 1"=50'  
VERTICAL: 1"=5'

**BLACK STAR CIRCLE**

