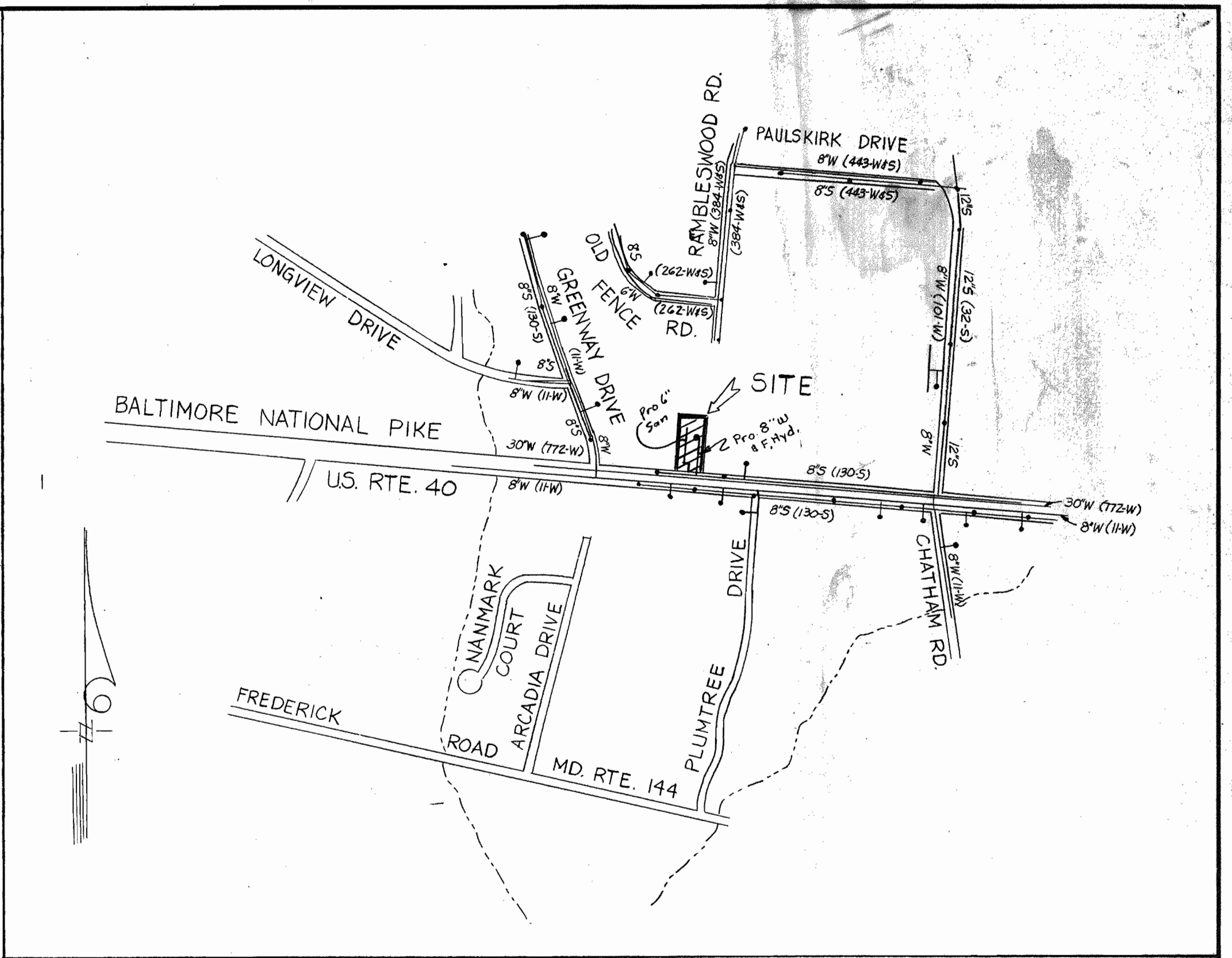
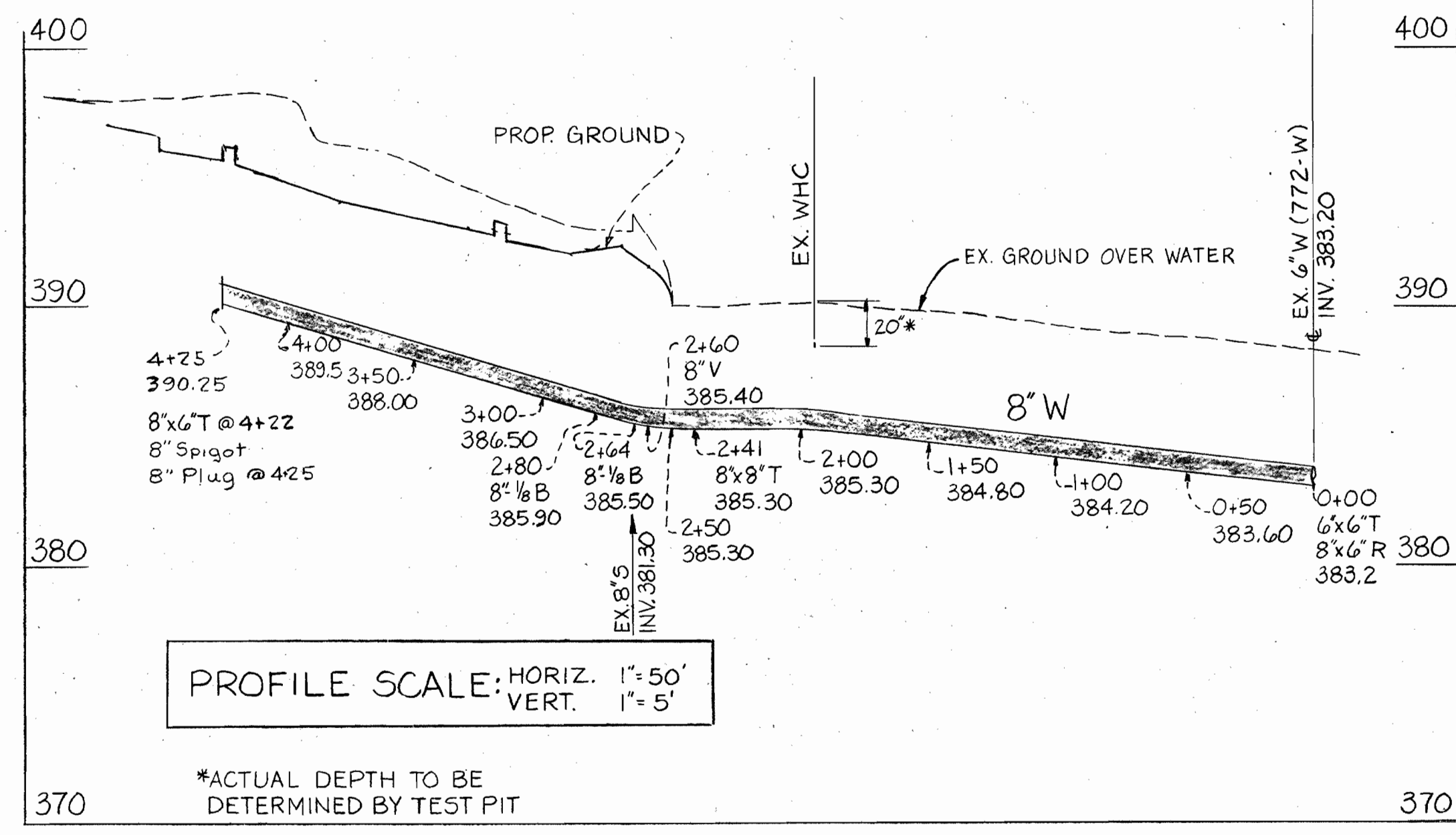


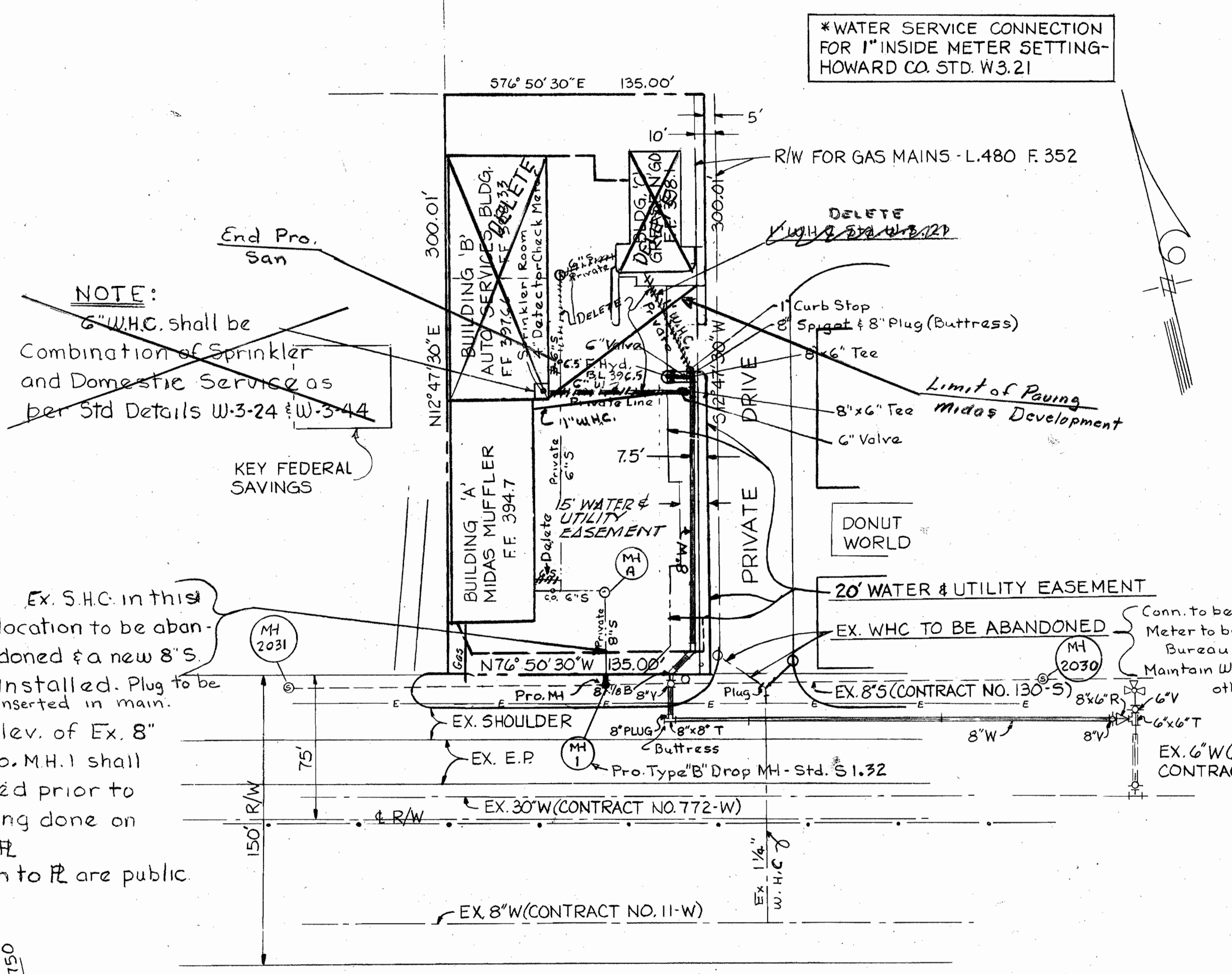
GENERAL NOTES

- ALL HORIZONTAL CONTROLS ARE BASED ON MARYLAND STATE COORDINATES.
- ALL VERTICAL CONTROLS ARE BASED ON U.S.G.S. DATUM.
- ALL PIPE ELEVATIONS SHOWN ARE INVERT ELEVATIONS.
- CLEAR ALL UTILITIES BY A MINIMUM OF 6'. CLEAR ALL POLES BY 2'-0" MINIMUM OR TUNNEL AS REQUIRED.
- FOR DETAILS NOT SHOWN ON THE DRAWINGS, AND FOR MATERIALS AND CONSTRUCTION METHODS, USE HOWARD COUNTY DESIGN MANUAL, VOLUME IV, STANDARD SPECIFICATIONS AND DETAILS FOR CONSTRUCTION. THE CONTRACTOR SHALL HAVE A COPY OF VOLUME IV ON THE JOB.
- WHERE TEST PITS HAVE BEEN MADE ON EXISTING UTILITIES, THEY ARE NOTED BY THE SYMBOL AT THE LOCATION OF THE TEST PIT. A NOTE OR NOTES CONTAINING THE RESULTS OF THE TEST PIT OR PITS IS INCLUDED ON THE DRAWINGS. EXISTING UTILITIES IN VICINITY OF THE PROPOSED WORK FOR WHICH TEST PITS HAVE NOT BEEN DUG SHALL BE LOCATED BY THE CONTRACTOR TWO WEEKS IN ADVANCE OF THE CONSTRUCTION OPERATIONS AT HIS OWN EXPENSE.
- CONTRACTOR SHALL NOTIFY THE FOLLOWING UTILITIES OR AGENCIES AT LEAST FIVE WORKING DAYS BEFORE STARTING WORK SHOWN ON THESE PLANS.
 STATE HIGHWAY ADMINISTRATION - 531-5533
 BALTIMORE GAS & ELECTRIC CO. - CONTRACTOR SERVICE 561-2585
 BALTIMORE GAS & ELECTRIC CO. - UNDERGROUND DAMAGE CONTROL 234-5621
 BALTIMORE GAS & ELECTRIC CO. - TROUBLE SHOOTING 298-9015
 MISS UTILITY - 1-559-0100
 COLONIAL PIPELINE CO. - 795-1390
 BUREAU OF UTILITIES, HOWARD COUNTY DEPARTMENT OF PUBLIC WORKS - 992-2366
- TREES AND SHRUBS ARE TO BE PROTECTED FROM DAMAGE TO MAXIMUM EXTENT. TREES AND SHRUBS LOCATED WITHIN THE CONSTRUCTION STRIPS ARE NOT TO BE REMOVED OR DAMAGED BY THE CONTRACTOR. CONTRACTOR SHALL REMOVE TREES, STUMPS AND ROOTS ALONG LINE OF EXCAVATION.
- APPROXIMATE LOCATION OF EXISTING MAINS ARE SHOWN. THE CONTRACTOR SHALL TAKE ALL NECESSARY PRECAUTIONS TO PROTECT EXISTING MAINS AND SERVICES AND MAINTAIN UNINTERRUPTED SUPPLY. ANY DAMAGE INCURRED SHALL BE REPAIRED IMMEDIATELY TO THE SATISFACTION OF THE ENGINEER. AT THE CONTRACTOR'S EXPENSE.
- ALL WATER MAINS TO BE D.I.P. UNLESS OTHERWISE NOTED.
- TOPS OF ALL WATER MAINS TO HAVE A MINIMUM OF 3'-1" COVER UNLESS OTHERWISE NOTED.
- VALVES ADJACENT TO TEES SHALL BE STRAPPED TO TEES.
- ALL FITTINGS SHALL BE BUTTRESSED OR ANCHORED WITH CONCRETE IN ACCORDANCE WITH THE STANDARD DETAILS UNLESS OTHERWISE PROVIDED FOR ON THE DRAWINGS.
- FIRE HYDRANTS SHALL BE SET TO THE BURY LINE ELEVATIONS SHOWN ON THE DRAWINGS. ALL FIRE HYDRANTS SHALL BE STRAPPED AND BUTTRESSED WITH CONCRETE IN ACCORDANCE WITH STANDARD DETAILS. SOIL AROUND THE FIRE HYDRANT SHALL BE COMPACTED IN ACCORDANCE WITH SECTION 1005 OF THE STANDARD SPECIFICATIONS.
- THE CONTRACTOR SHALL NOT OPERATE ANY WATER MAIN VALVES ON THE EXISTING WATER SYSTEM.
- ALL WATER HOUSE CONNECTIONS SHALL BE FOR AN INSIDE METER SETTING, UNLESS OTHERWISE NOTED.
- EXTEND PIPE AS NECESSARY TO INSTALL PLUG FOR BLOCKING, WHERE WATER MAINS END WITH VALVES.
- STRAW BALE DIKES AND SILT FENCES ARE INTERCHANGEABLE.
- EXISTING GROUND OVER WATER HAS BEEN OBTAINED BY FIELD SURVEY IN AUGUST, 1987 BY GREENHORNE & O' MARA, INC.
- SERVICE CLAMPS ARE TO HAVE STAINLESS STRAPS.
- ALL DIP FITTINGS SHALL BE IN ACCORDANCE WITH AWWA SPECIFICATION C-153 DUCTILE IRON COMPACT FITTINGS, 3" THROUGH 12" FOR WATER AND OTHER LIQUIDS.



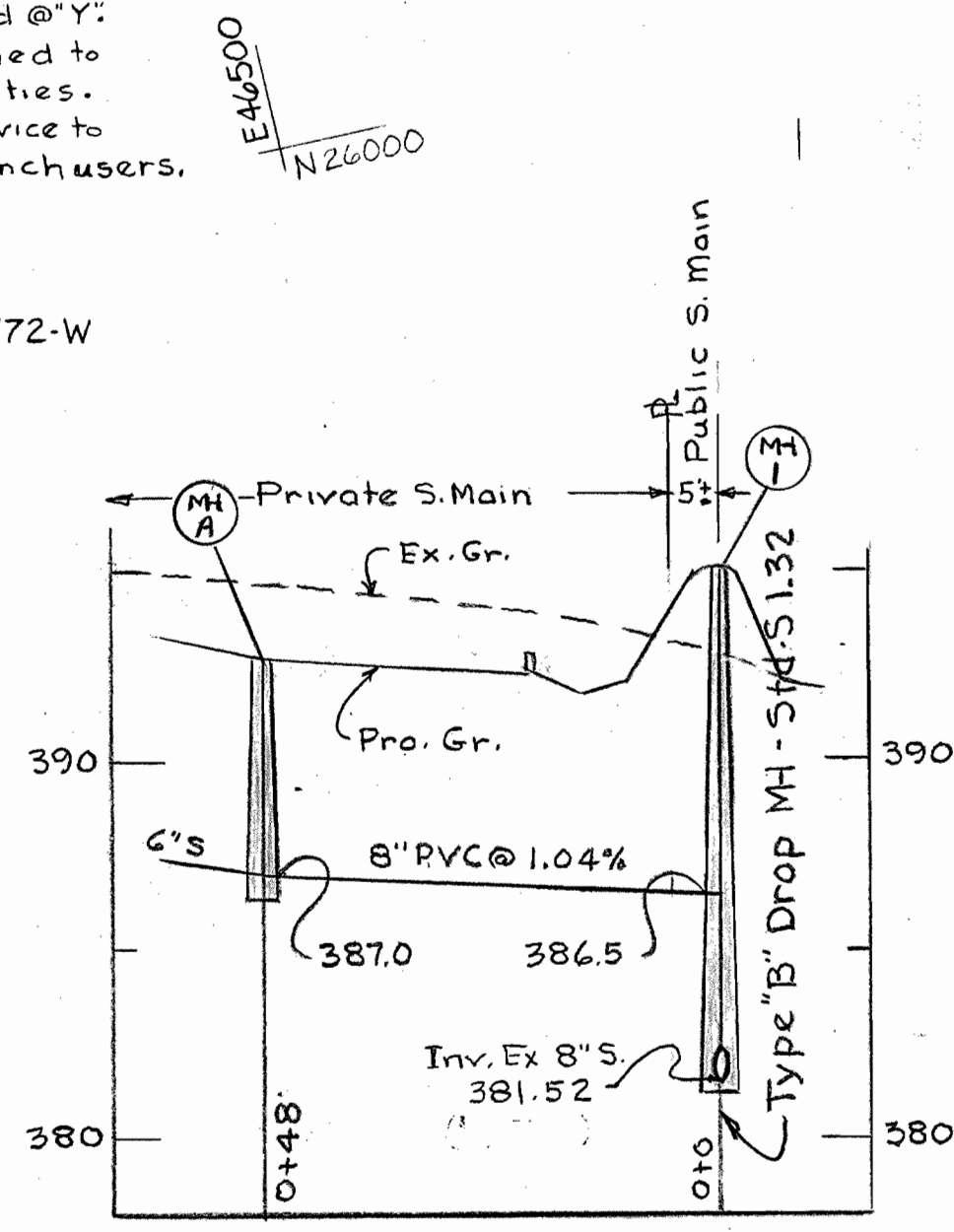
VICINITY MAP SCALE: 1"=600'

WATER & SEWER CODE: (FOR COUNTY USE) WATER: F-06 SEWER: 1403900	DRAINAGE AREA: PATAPSCO TYPE OF BUILDINGS: AUTOMOTIVE SERVICE NO. OF WHC: X1 NO. OF LOTS: 1
--	--



NOTE:
6" WHC shall be
Combination of Sprinkler
and Domestic Service as
per Std Details W-3-24 & W-3-44

Note: Location & Elev. of Ex. 8" sewer at pro. MH.1 shall be determined prior to any work being done on pro. H.C. to R. MH.1 & 8" Main to R. are public facilities.



QUANTITIES

ITEM	BID	AS BUILT	MATERIAL/SUPPLIER
8" WATER	LF 425		
6" WATER	LF 24		
8" VALVES	EA 2		
6" VALVES	EA 2		
6.5' FIRE HYDRANT	EA 1		
8" PLUG	EA 2		
6"x6" T	EA 1		
8"-1/8 B	EA 2		
8"x6" T	EA 2		
8"x6" R	EA 1		
8"x8" T	EA 1		
8" SEWER (P.V.C.)	LF 5'		
TYPE 'B' DROP MH.	EA 1		

REVIEW FOR HOWARD S.C.D. AND MEETS ALL REQUIREMENTS.
 James M. Wilson / JML 4/1/90
 S.S. SOIL CONSERVATION SERVICE DATE
 SDP 89-207

THIS DEVELOPMENT PLAN IS APPROVED FOR SOIL EROSION AND SEDIMENT CONTROL BY THE HOWARD SOIL CONSERVATION DISTRICT.
 John L. Blanton 4/1/90
 HOWARD S.C.D. DATE
 SDP 89-207

DEPARTMENT OF PUBLIC WORKS
 HOWARD COUNTY, MARYLAND
 Danielle W. Wescand 4/1/90
 DIRECTOR OF PUBLIC WORKS DATE
 Robert Baumer 4-3-90
 CHIEF, BUREAU OF UTILITIES DATE
 Gerald Anderson Polio 4/1/90
 CHIEF, BUREAU OF ENGINEERING DATE
 Ronald J. Sposon 4/12/90
 CHIEF, LAND DEVELOPMENT DIVISION DATE

SEDIMENT CONTROL MEASURES FOR THIS CONTRACT WILL BE IMPLEMENTED IN ACCORDANCE WITH SECTION 219 OF THE STANDARD SPECIFICATION AND SITE PLAN SDP-89-207
 BEFORE BEGINNING CONSTRUCTION, CONTACT "MISS UTILITY" AT 1-800-257-7777 AT LEAST 48 HOURS PRIOR TO CONSTRUCTION.



NOTE:
 THIS PLAN SUPERCEDES THE WATER CONSTRUCTION PLAN DESIGNED BY GREENHORNE & O' MARA INC. AND APPROVED BY DIRECTOR OF PUBLIC WORKS ON 3/10/1988.

Note: Original plan was approved 3-10-88 and filed for record.
 MAISTE+WATTS INC. 2923 Chenoak Ave. Baltimore, Md. -21234
 L. ALAN EVANS-Consultant 28 La Costa Ct. Towson, Md. 301-321-7560---Zip-21204
 PLAN FOR WATER MAIN EXTENSION CONTRACT No. 14-1954-D

THE DOLLY PROPERTY
 2-ND ELECTION DISTRICT
 SHEET 1 OF 1
 DATE Feb. 2, 1990
 SCALE AS SHOWN
 JOB NUMBER 89-137