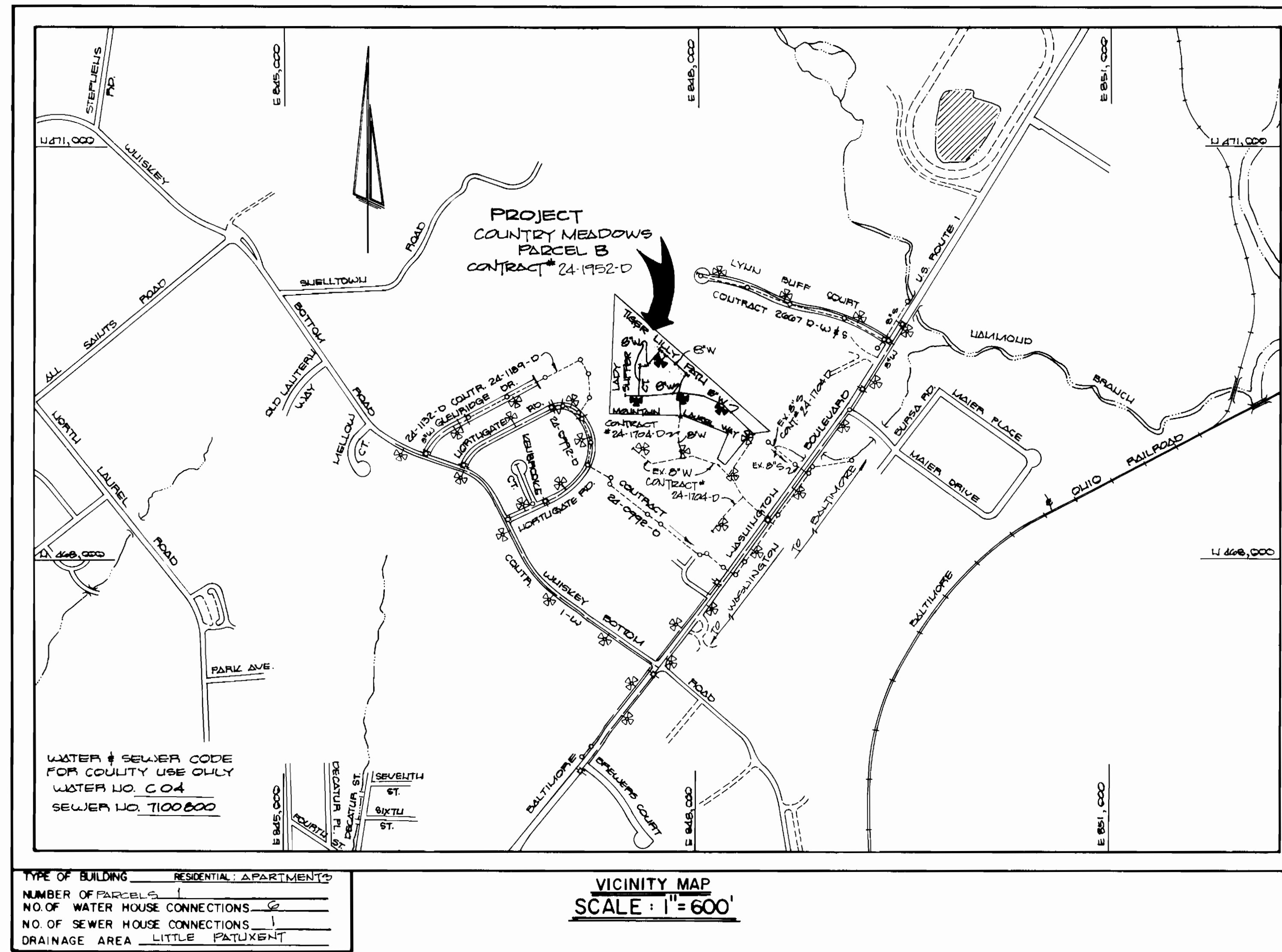


QUANTITIES			
ITEM	EST D	AS BUILT	SUPPLIER
8" WATER	1,974 LF	1,777 LF	APP ATLANTIC STATES
6" WATER	40 LF	31 LF	APP ATLANTIC STATES
4" WATER	60 LF	102 LF	APP ATLANTIC STATES
FIRE HYDRANTS	4 EACH	4 EA	APP MUELLER
8" VALVES	5 EACH	5 EA	APP MUELLER
4" VALVES	6 EACH	6 EA	APP MUELLER
8" SEWER	8 LF	8 LF	APP CERTAINTEK

NOTE: CONTRACTOR SHALL VERIFY QUANTITIES TO HIS OWN SATISFACTION PRIOR TO SUBMITTING BIDS



GENERAL NOTES

- APPROXIMATE LOCATION OF EXISTING MAINS IS SHOWN. THE CONTRACTOR SHALL TAKE ALL NECESSARY PRECAUTIONS TO PROTECT EXISTING MAINS AND SERVICES AND MAINTAIN UNINTERRUPTED SUPPLY. ANY DAMAGE INCURRED SHALL BE REPAIRED IMMEDIATELY TO THE SATISFACTION OF THE ENGINEER AT THE CONTRACTOR'S EXPENSE.
- ALL HORIZONTAL CONTROLS ARE BASED ON MARYLAND STATE COORDINATES.
- ALL VERTICAL CONTROLS ARE BASED ON U.S.G.S. DATUM.
- ALL PIPE ELEVATIONS SHOWN ARE INVERT ELEVATIONS.
- CLEAR ALL UTILITIES BY A MINIMUM OF 6".
- FOR DETAILS NOT SHOWN ON THE DRAWINGS, AND FOR MATERIALS AND CONSTRUCTION METHODS, USE HOWARD COUNTY DESIGN MANUAL, VOLUME IV, STANDARD SPECIFICATIONS AND DETAILS FOR CONSTRUCTION (1989 AMENDMENTS). THE CONTRACTOR SHALL HAVE A COPY OF VOLUME IV ON THE JOB.
- WHERE TEST PITS HAVE BEEN MADE ON EXISTING UTILITIES, THEY ARE NOTED BY THE SYMBOL AT THE LOCATION OF THE TEST PIT. A NOTE OR NOTES CONTAINING THE RESULTS OF THE TEST PIT OR PITS IS INCLUDED ON THE DRAWINGS. EXISTING UTILITIES IN THE VICINITY OF THE PROPOSED WORK FOR WHICH TEST PITS HAVE NOT BEEN DUG SHALL BE VERIFIED BY THE CONTRACTOR TO HIS OWN SATISFACTION. ANY DAMAGE TO EXISTING FACILITIES DUE TO THE CONTRACTOR'S NEGLIGENCE SHALL BE REPAIRED AT THE CONTRACTOR'S EXPENSE.
- CONTRACTOR SHALL NOTIFY THE FOLLOWING UTILITIES OR AGENCIES AT LEAST FIVE WORKING DAYS BEFORE STARTING WORK SHOWN ON THESE PLANS:
 - STATE HIGHWAY ADMINISTRATION : 531-5533
 - BALTIMORE GAS & ELECTRIC CO.-CONTRACTOR SERVICES: 850-4620
 - BALTIMORE GAS & ELECTRIC CO. UNDERGROUND SERVICE CONTROL: 859-9004
 - BALTIMORE GAS & ELECTRIC CO. TROUBLE SHOOTING: 298-9001
 - MISS UTILITY: 1-559-0100
 - COLONIAL PIPELINE COMPANY: 795-1390
 - BUREAU OF UTILITIES, HOWARD COUNTY DEPARTMENT OF PUBLIC WORKS 992-2366
 - C & P TELEPHONE COMPANY 1-800-257-7777
- TREES AND SHRUBS ARE TO BE PROTECTED FROM DAMAGE TO MAXIMUM EXTENT. TREES AND SHRUBS LOCATED WITHIN THE CONSTRUCTION STRIP ARE NOT TO BE REMOVED OR DAMAGED BY THE CONTRACTOR.
- CONTRACTOR SHALL REMOVE TREES, STUMPS AND ROOTS ALONG LINE OF EXCAVATION. PAYMENT FOR SUCH REMOVAL SHALL BE INCLUDED IN THE UNIT PRICE BID FOR CONSTRUCTION OF THE MAIN.
- ALL WATER MAINS TO BE D.I.P. CLASS 52 UNLESS OTHERWISE NOTED.
- TOPS OF ALL WATER MAINS TO HAVE A MINIMUM OF 3-1/2' COVER UNLESS OTHERWISE NOTED.
- VALVES ADJACENT TO TEES SHALL BE STRAPPED TO TEES.
- ALL FITTINGS SHALL BE BUTTRESSED OR ANCHORED WITH CONCRETE IN ACCORDANCE WITH THE STANDARD DETAILS UNLESS OTHERWISE PROVIDED FOR ON THE DRAWINGS.
- FIRE HYDRANTS SHALL BE SET TO THE BURY LINE ELEVATIONS SHOWN ON THE DRAWINGS. ALL FIRE HYDRANTS SHALL BE STRAPPED AND BUTTRESSED WITH CONCRETE IN ACCORDANCE WITH STANDARD DETAILS. SOIL AROUND THE FIRE HYDRANT SHALL BE COMPACTED IN ACCORDANCE WITH SECTION 1000 AND 1005 OF THE STANDARD SPECIFICATIONS.
- THE CONTRACTOR SHALL NOT OPERATE ANY WATER MAIN VALVES ON THE EXISTING WATER SYSTEM.
- FUTURE PRIVATE DOMESTIC SERVICES SHALL HAVE 2" METER SETTINGS & FIRE SERVICES SHALL HAVE 1 1/2" METER SETTINGS SEE SDP 89-221
- WATER MAINS AND WATER HOUSE CONNECTION LINES MUST BE PLACED SO AS TO HAVE AT LEAST ONE (1) FOOT SEPARATION FROM THE SEWER MAIN OR SEWER HOUSE CONNECTION AS THEY PASS ABOUT IT.
- MANHOLES DESIGNATED W.T. IN PLAN AND PROFILE SHALL HAVE WATERTIGHT FRAME AND COVERS STANDARD DETAIL G5.52 WHERE WATERTIGHT MANHOLE FRAME AND COVER IS USED. SET TOP OF FRAME 1'-6" ABOVE FINISHED GRADE UNLESS OTHERWISE NOTED ON THE DRAWINGS.
- ALL SEWER MAINS SHALL BE C.S.P.X., R.C.S.P., V.C.P.X., A.C.P. CLASS 2400 OR P.V.C. UNLESS OTHERWISE NOTED.
- THE CONTRACTOR SHALL PROVIDE A JOINT IN ALL SEWER MAINS WITHIN 2'-0" OF EXTERIOR MANHOLE WALL.
- ALL MANHOLES SHALL BE 4'-0" INSIDE DIAMETER UNLESS OTHERWISE NOTED.
- MANHOLES SHOWN WITH 12" AND 16" WALLS ARE FOR BRICK MANHOLES ONLY.
- MANHOLES LOCATED WITHIN PROPOSED ROADWAY SHALL HAVE STANDARD HEAVY TRAFFIC MANHOLE FRAME AND COVER, STANDARD DETAIL G5.51.
- ALL D.I.P. FITTINGS SHALL BE IN ACCORDANCE WITH AWWA SPECIFICATION C-153: DUCTILE IRON COMPACT FITTINGS, 3-INCH THROUGH 12-INCH FOR WATER & OTHER LIQUIDS.

CONTRACT NO. 24-1952-D

COUNTRY MEADOWS

PARCEL 'B'

WATER AND SEWER MAIN EXTENSIONS

HOWARD COUNTY, MARYLAND

DEPARTMENT OF PUBLIC WORKS

THIS DEVELOPMENT PLAN IS APPROVED FOR EROSION AND SEDIMENT CONTROL BY HOWARD SOIL CONSERVATION DISTRICT.

APPROVED: *Stephen K. Kuhn* 7/31/89
HOWARD SOIL CONSERVATION DISTRICT DATE

SEDIMENT CONTROL MEASURES FOR THIS CONTRACT WILL BE IMPLEMENTED IN ACCORDANCE WITH SECTION 219 OF THE HOWARD COUNTY DESIGN MANUAL AND STANDARDS AND SPECIFICATIONS FOR SOIL EROSION AND SEDIMENT CONTROL IN DEVELOPING AREAS AND ALSO AS SHOWN ON THE GRADING AND SEDIMENT CONTROL PLAN F 89-215 & SDP 89-221

REVIEWED FOR HOWARD COUNTY SOIL CONSERVATION DISTRICT AND MEETS TECHNICAL REQUIREMENTS.
James M. Helm 7/31/89
U.S. SOIL CONSERVATION SERVICE DATE

PLAN REFERENCE NUMBERS:
F 89-215
SDP 89-221

CONTRACT NO. 24-1952-D
COUNTRY MEADOWS
PARCEL 'B'
WATER & SEWER EXTENSIONS
HOWARD COUNTY, MARYLAND

DEPARTMENT OF PUBLIC WORKS HOWARD COUNTY, MARYLAND <i>James P. Helm</i> 8/1/89 DIRECTOR OF PUBLIC WORKS DATE <i>Michael A. Hammon</i> 7-26-89 CHIEF, BUREAU OF UTILITIES DATE	FISHER, COLLINS AND CARTER, INC. #9757 CONSULTING ENGINEERS AND LAND SURVEYORS 8388 COURT AVENUE ELLKOTT CITY, MARYLAND 21043 <i>Terrell A. Fisher</i> TERRELL A. FISHER	DES. GW DRN. GW CHK. PWK DATE: BY NO. REVISION DATE	TITLE SHEET COUNTRY MEADOWS PARCEL 'B' CONTRACT NO. 24-1952-D SIXTH ELECTION DISTRICT HOWARD COUNTY, MARYLAND	SCALE AS SHOWN SHEET 1 OF 3
--	---	--	--	--------------------------------

AS-BUILT 7/19/90

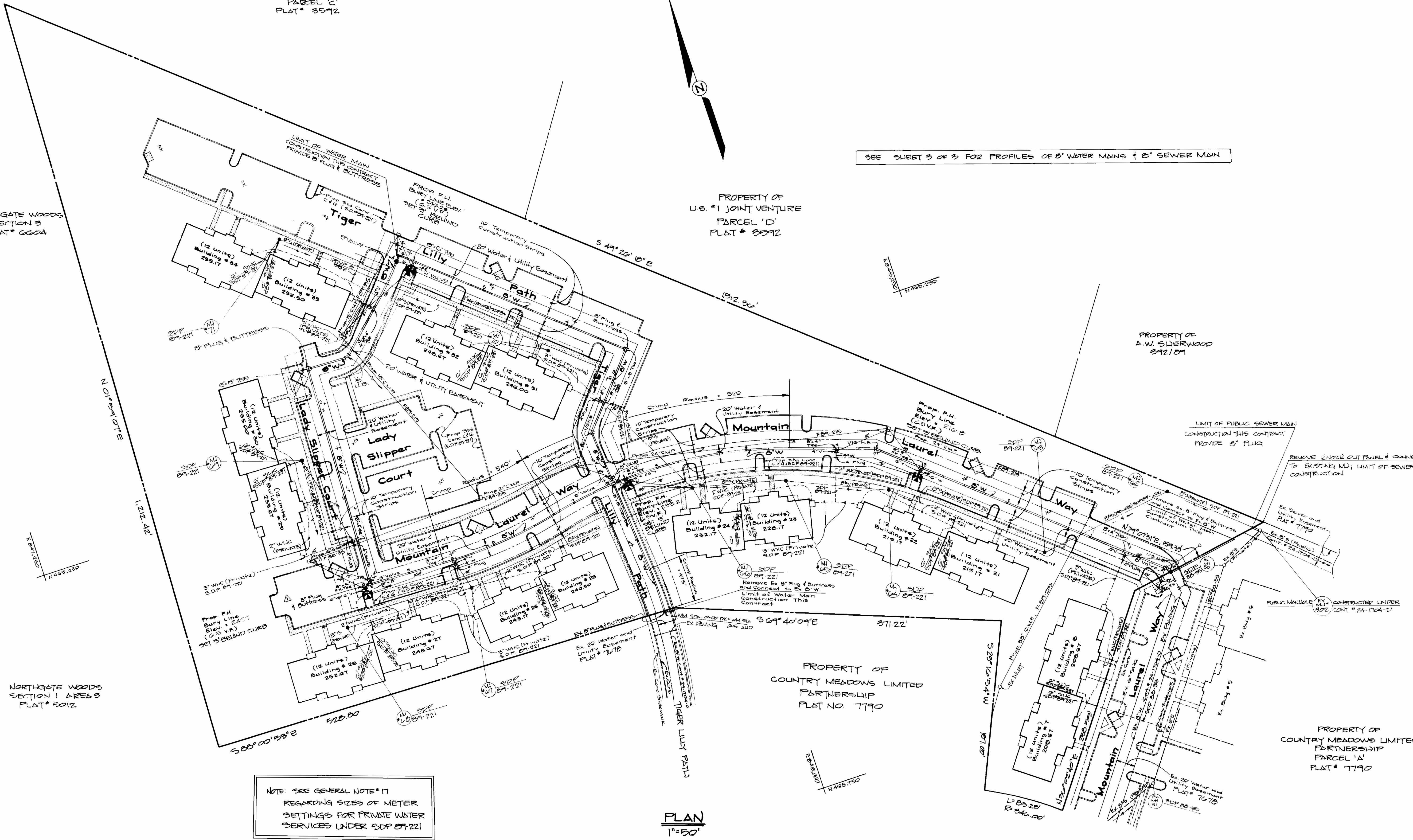
PROPERTY OF
U.S. #1 JOINT VENTURE
PARCEL 'C'
PLAT # 3572

PROPERTY OF
U.S. #1 JOINT VENTURE
PARCEL 'D'
PLAT # 3592

NORTHGATE WOODS
SECTION B
PLAT # 6604

PROPERTY OF
A.W. SIDERWOOD
292/01

SEE SHEET 3 OF 3 FOR PROFILES OF 8" WATER MAINS & 8" SEWER MAIN



NOTE: SEE GENERAL NOTE #17
REGARDING SIZES OF METER
SETTINGS FOR PRIVATE WATER
SERVICES UNDER SDP 09-221

PLAN
1"=50'

DEPARTMENT OF PUBLIC WORKS
HOWARD COUNTY, MARYLAND

FISHER, COLLINS, AND CARTER, INC.
CONSULTING ENGINEERS AND LAND SURVEYORS
8388 COURT AVENUE
ELLCOTT CITY, MARYLAND 21043

#9757

DES: G.W.					
DRN: G.W.					
CHK: P.W.K.					
DATE:	BY:	NO.:	REVISION:	DATE:	

PLAN
WATER & SEWER MAINS

COUNTRY MEADOWS
PARCEL B
CONTRACT NO. 24-1952-D
SIXTH ELECTION DISTRICT
HOWARD COUNTY, MARYLAND

SCALE
AS
SHOWN

SHEET
2 OF 3

James H. ...
DIRECTOR OF PUBLIC WORKS
DATE: 8/1/89

Michael A. ...
CHIEF, BUREAU OF UTILITIES
DATE: 7-26-89

William S. ...
CHIEF, BUREAU OF ENGINEERING
DATE: 8/1/89

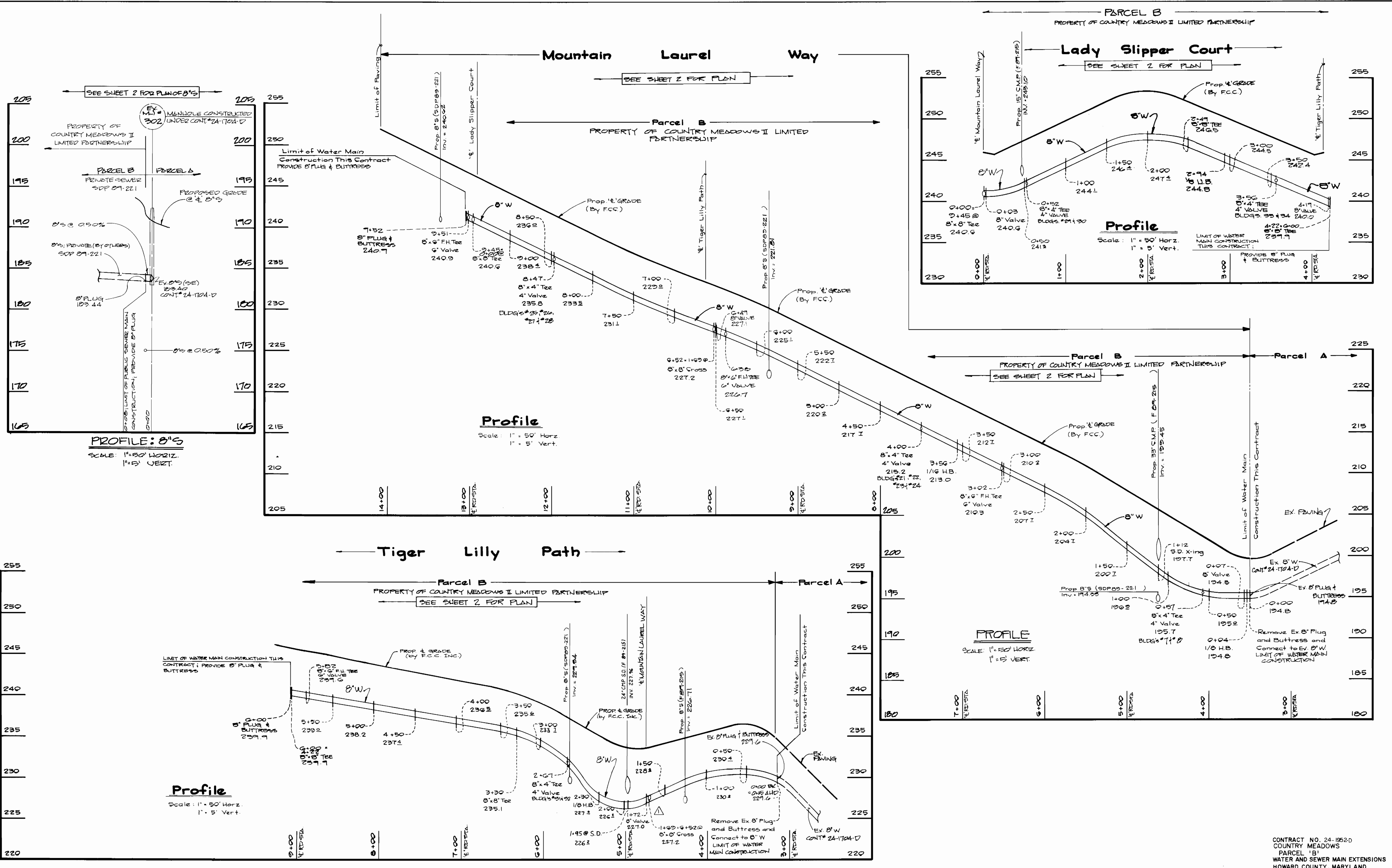
Terrell A. Fisher
CHIEF, LAND DEVELOPMENT DIVISION
DATE: 8/1/89

Terrell A. Fisher
TERRELL A. FISHER

600' SCALE MAP NO. 47 BLOCK NO.

AS BUILT 7/17/90

CONTRACT NO. 24-1952-D
COUNTRY MEADOWS
PARCEL B
WATER AND SEWER MAIN EXTENSIONS
HOWARD COUNTY, MARYLAND



DEPARTMENT OF PUBLIC WORKS
 HOWARD COUNTY, MARYLAND

James P. ... 8/1/89
 DIRECTOR OF PUBLIC WORKS DATE

Michael A. ... 7-20-89
 CHIEF, BUREAU OF UTILITIES DATE

William S. ... 8/1/89
 CHIEF, BUREAU OF ENGINEERING DATE

William S. ... 8/1/89
 CHIEF, LAND DEVELOPMENT DIVISION DATE

FISHER, COLLINS, AND CARTER, INC. #9757
 CONSULTING ENGINEERS AND LAND SURVEYORS
 8388 COURT AVENUE
 ELLICOTT CITY, MARYLAND 21043

Terrell A. Fisher
 TERRELL A. FISHER

DES: G.W.					
DRN: G.W.					
CHK: P.W.K.					
DATE:					
BY:					
NO.					
REVISION					
DATE					

PROFILES
 WATER AND SEWER MAINS

600' SCALE MAP NO. 47 BLOCK NO.

COUNTRY MEADOWS
 PARCEL 'B'
 CONTRACT NO. 24-1952-D
 SIXTH ELECTION DISTRICT
 HOWARD COUNTY, MARYLAND

SCALE AS SHOWN

SHEET 3 OF 3

CONTRACT NO. 24-1952-D
 COUNTRY MEADOWS
 PARCEL 'B'
 WATER AND SEWER MAIN EXTENSIONS
 HOWARD COUNTY, MARYLAND