

BENCH MARK #1
1/2" REBAR PROPERTY CORNER
ELEV. 170.67

BENCH MARK #2
X" IN FIRST STEP OF HOUSE #6378
ELEV. 168.97

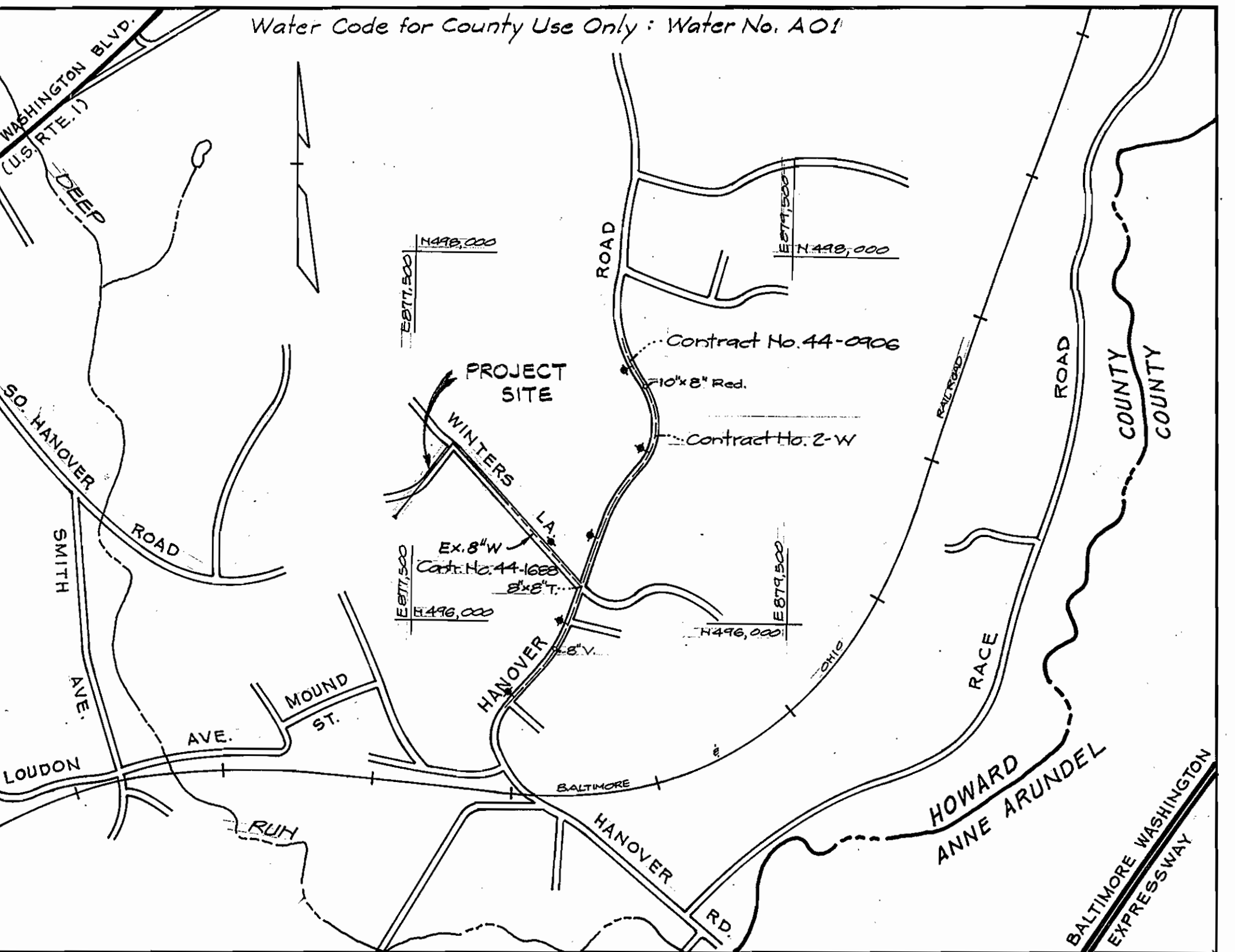
Reserved for future R/W
of South Hanover Road

QUANTITIES

ITEM	UNIT	ESTIMATE	AS-BUILT	SUPPLIER
8" WATER MAIN	L.F.	30		
8" VALVE	EACH	1		
8" x 8" TEE	EACH	1		
FIRE HYDRANT	EACH	3		
6" VALVE	EACH	3		
8" x 6" TEE	EACH	3		
3/4" W.H.C.	L.F.	60		

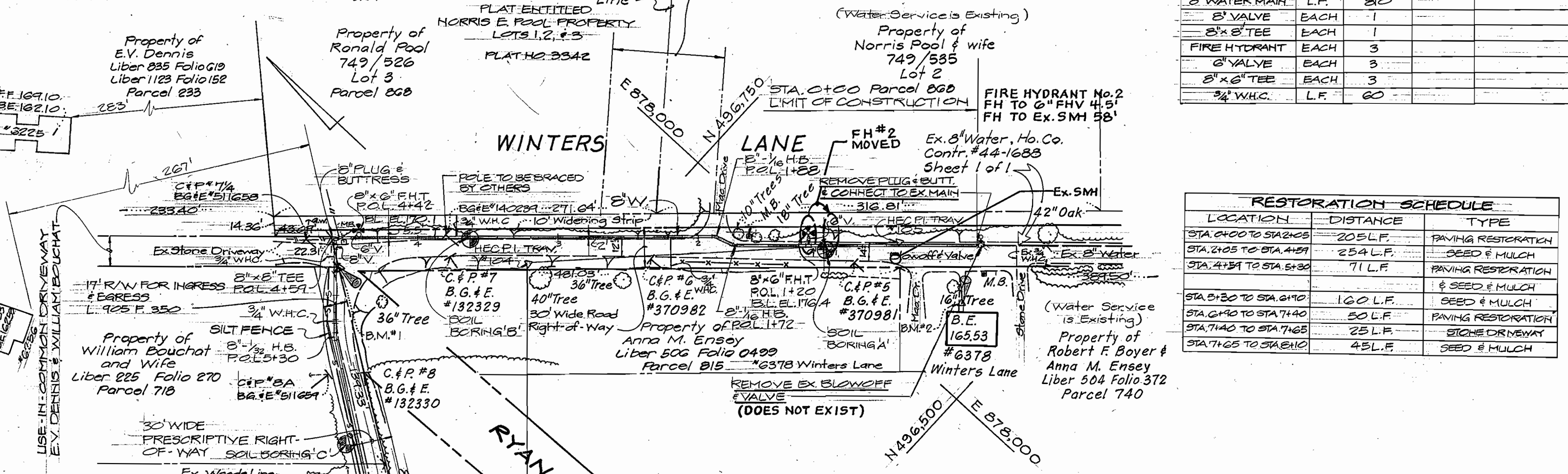
RESTORATION SCHEDULE

LOCATION	DISTANCE	TYPE
STA. 0+00 TO STA. 2+05	205 L.F.	PAVING RESTORATION
STA. 2+05 TO STA. 4+31	254 L.F.	SEED & MULCH
STA. 4+31 TO STA. 5+30	71 L.F.	PAVING RESTORATION
STA. 5+30 TO STA. 6+10	100 L.F.	SEED & MULCH
STA. 6+10 TO STA. 7+40	50 L.F.	PAVING RESTORATION
STA. 7+40 TO STA. 7+65	25 L.F.	SIGNE DRIVEWAY
STA. 7+65 TO STA. 8+10	45 L.F.	SEED & MULCH



Types of Buildings: Residential
Number of Parcels: 6
No. of Water House Conn.: 6
Drainage Area: Potapscoc

VICINITY MAP
SCALE: 1"=600'



NOTE:
ALL WATER HOUSE CONNECTIONS SHALL BE
3/4" INSTALLED BY CIPER CUT EXCAVATION.

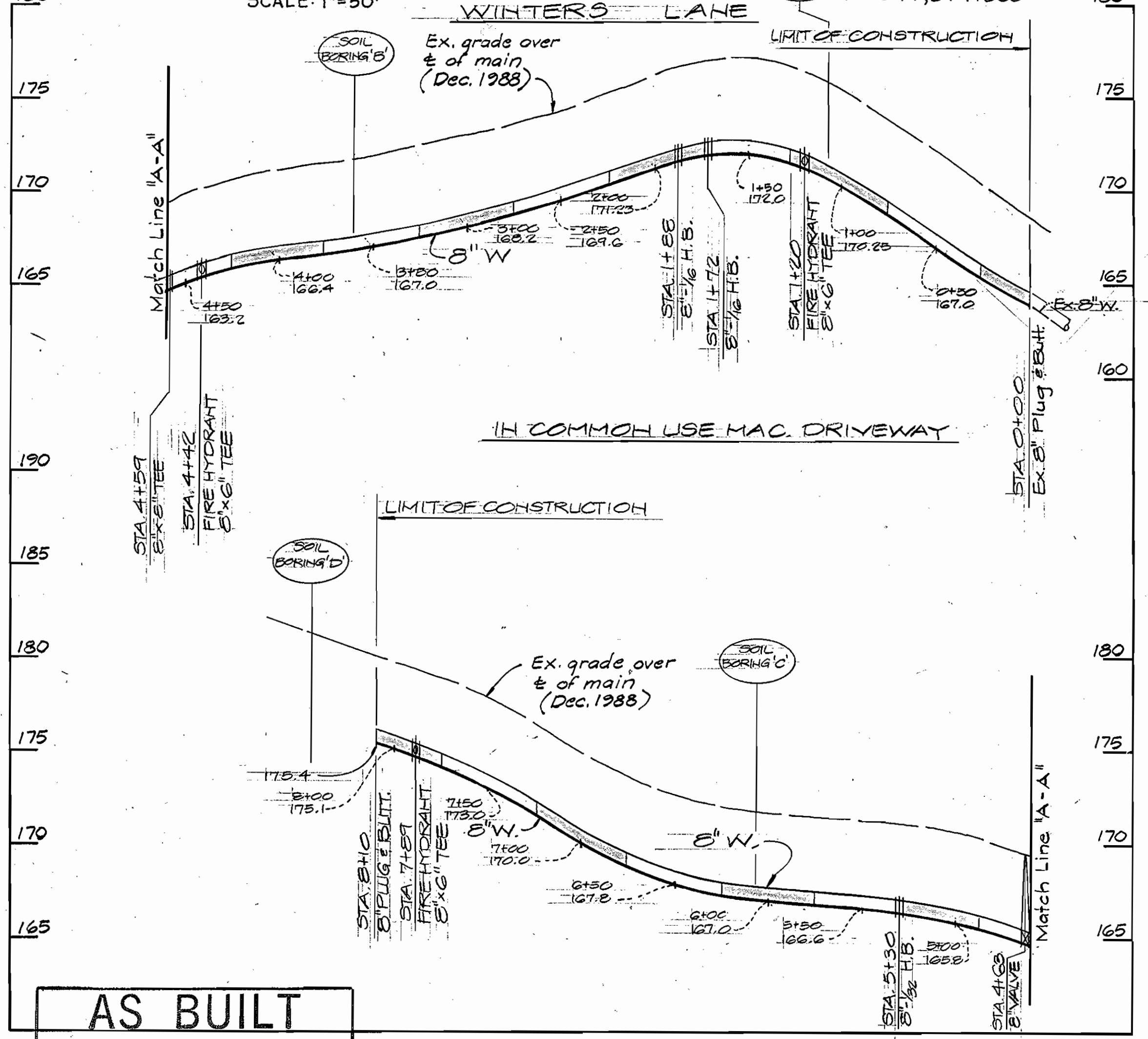
AS-BUILT
PER CAPITAL PROJECT
J-4143

TRAVERSE INFORMATION

H.E.C. P.I. TRAV. #105	N 49° 20' 25" E	496.207.258
N 45° 59' 01.0" W	264.61'	E 878,055.319
H.E.C. P.I. TRAV. #104	S 47° 26' 56.0" W	387.78'
H.E.C. P.I. TRAV. #103	S 01° 10' 10" E	496,791.126
		E 877,865.027
		E 496,528.890
		E 877,579.360

PLAN

SCALE: 1"=50'



AS BUILT

DATE: AUG. 2008

PROFILES

SCALE: HORIZ. 1"=50'
VERT. 1"=5'

STAKEOUT TABLE

FITTING	DISTANCE	OFFSET
8" x 1/2" H. BEND	117' West of P.I. Trav. #105	4' North
8" x 1/2" H. BEND	131' West of P.I. Trav. #105	11.5' North
8" x 8" TEE	136' West of P.I. Trav. #104	12' North
8" x 1/2" H. BEND	137' West of P.I. Trav. #104	33.5' South

DAILY BACKFILL: SEDIMENT CONTROL MEASURES FOR THIS CONTRACT WILL BE IMPLEMENTED IN ACCORDANCE WITH SECTION 219 OF THE STANDARD SPECIFICATION.

REVIEWED FOR HOWARD SOIL CONSERVATION DISTRICT AND MEETS TECHNICAL REQUIREMENT.

J. Kelly 8-31-89
U.S. SOIL CONSERVATION SERVICE

This Construction Plan is approved for Soil Erosion and Sediment Control by the Howard Soil Conservation District.

APPROVED: *Robert W. Ziehm* 8-31-89
HOWARD S.C.D. DATE

DEPARTMENT OF PUBLIC WORKS
HOWARD COUNTY, MARYLAND

James P. ... 8-28-89
DIRECTOR OF PUBLIC WORKS DATE

Robert W. ... 8-21-89
CHIEF, BUREAU OF UTILITIES DATE

HICKS ENGINEERING CO., INC.
ENGINEERS - SURVEYORS - PLANNERS
200 E. JOPPA ROAD - SUITE 402
TOWSON MARYLAND 21204

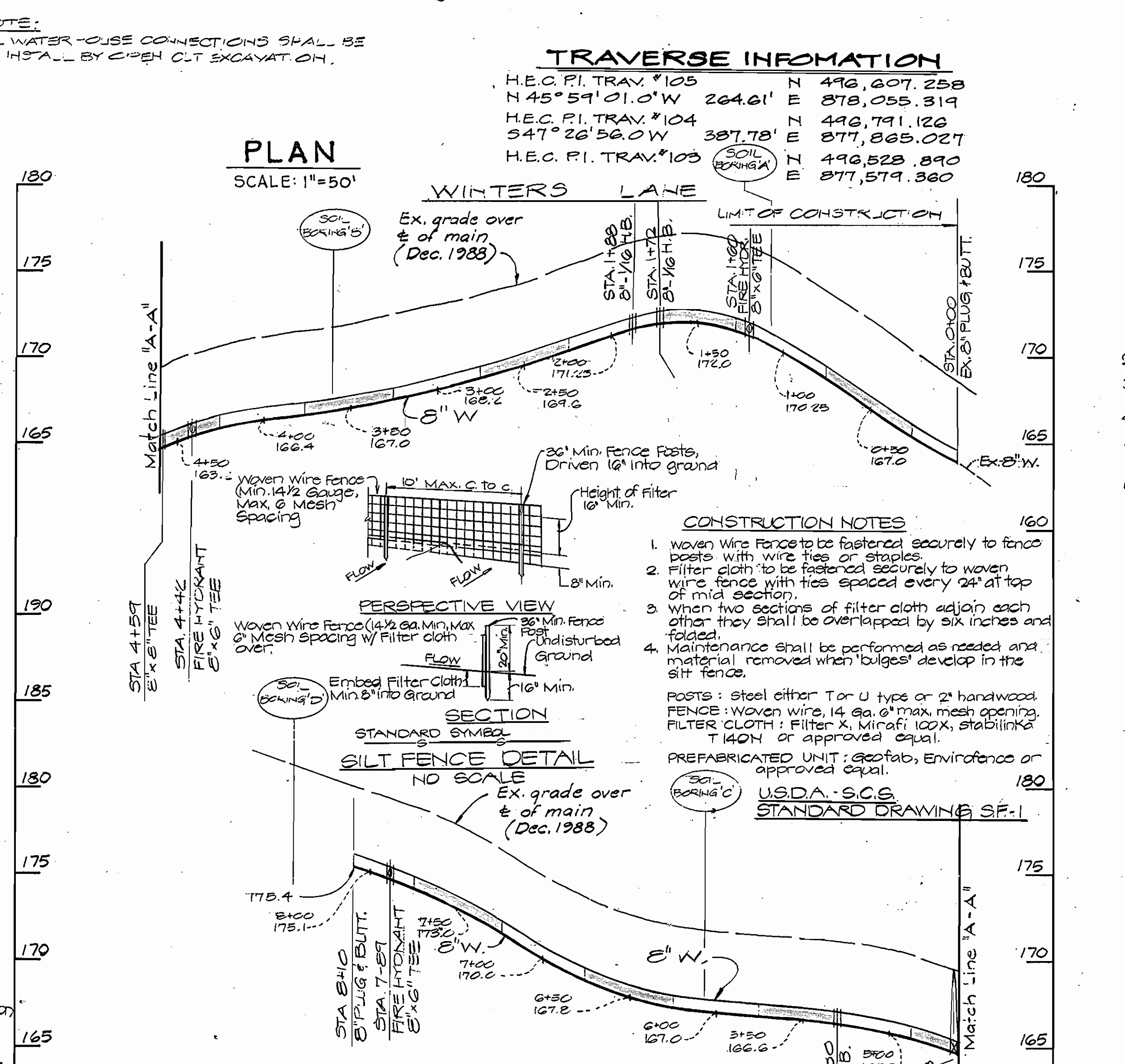
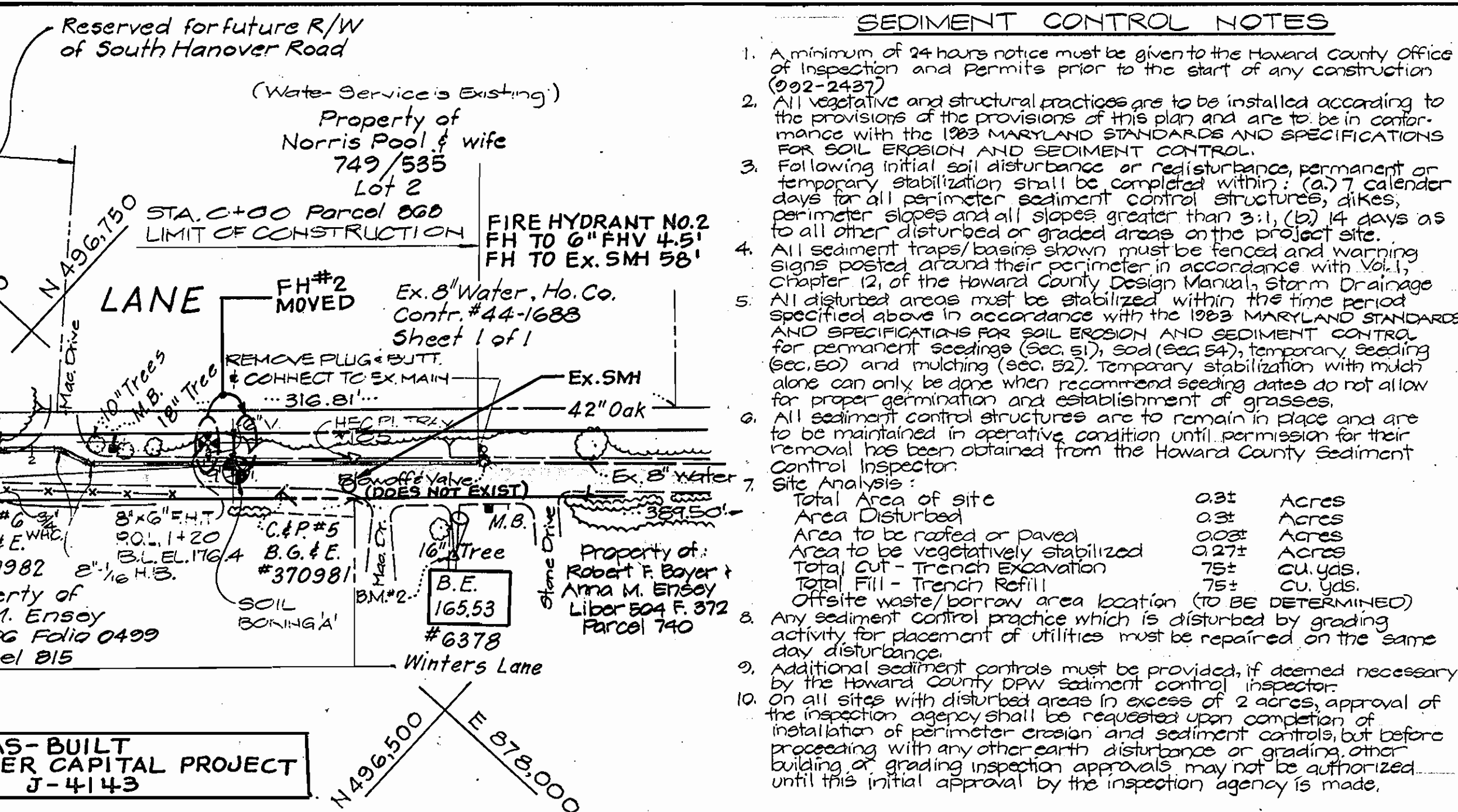
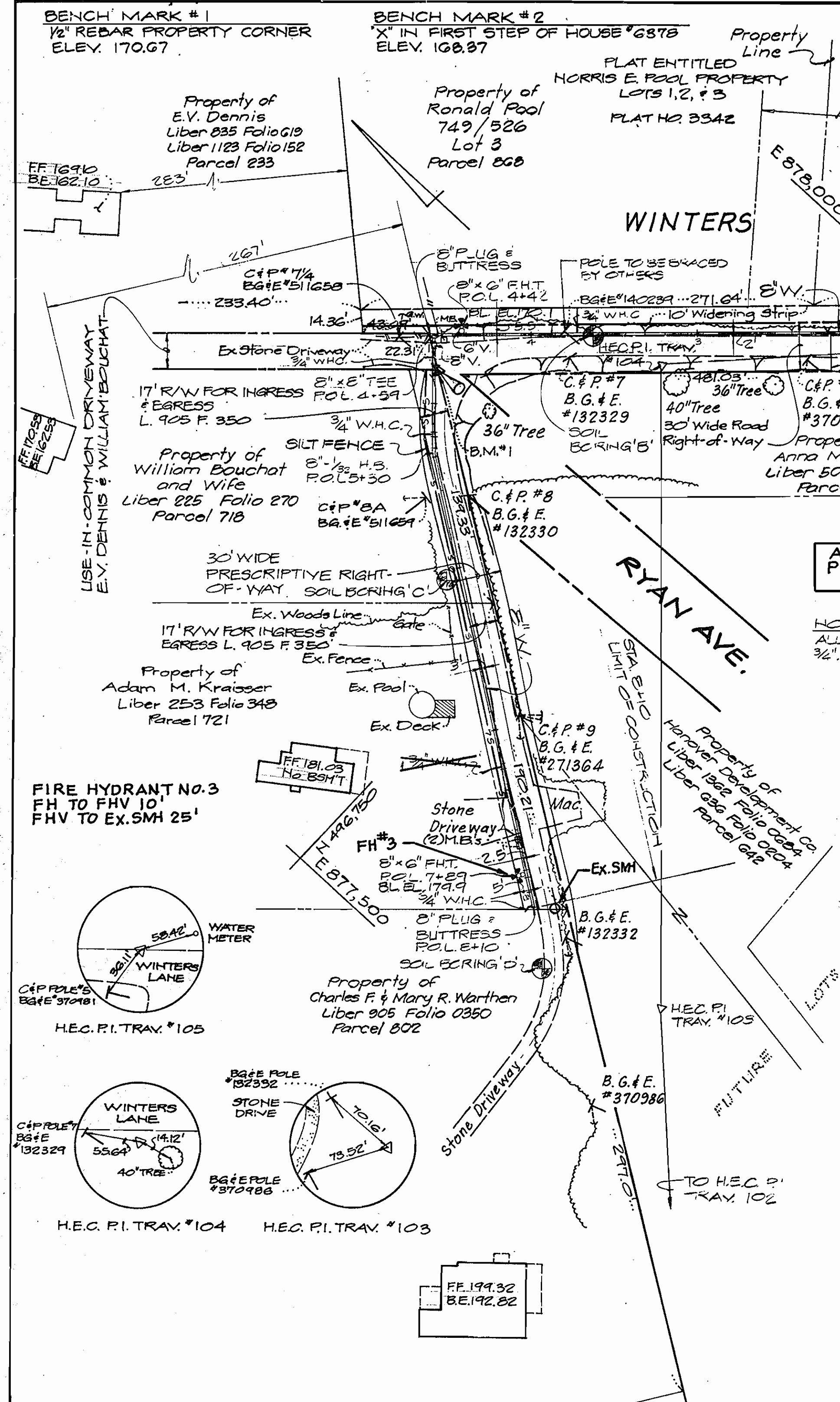
Donald E. Hicks, P.E. REG. NO. 8676

DES:	T.A.W.
DRN:	L.A.W.
CHK:	D.E.H.
DATE:	
BY:	NO.
REVISION	
DATE	

8" WATER MAIN
CONTRACT NO. 44-1937

WINTERS LANE WATER EXTENSION
FIRST ELECTION DISTRICT
HOWARD COUNTY, MARYLAND
CAPITAL PROJECT W-8689

SCALE AS SHOWN
SHEET 1 OF 2



- ### SEQUENCE OF CONSTRUCTION
- Obtain Construction Permit. Contact Howard County Department of Inspections and Permits - (301) 992-2437.
 - Install Sediment Control Measures as shown on this plan or as may be directed.
 - Excavate for and install proposed water main and related facilities.
 - Ingress and Egress shall be maintained to all residences for overnight, weekends, and holidays.
 - Complete grading, Restore Driveways and Stabilize areas disturbed by the contractor's operations.
 - Remove Sediment Control Devices, After Proper Authorization from Sediment Control Inspector, and restore all areas that may require additional stabilization.

REVIEWED FOR HOWARD SOIL CONSERVATION DISTRICT AND MEETS TECHNICAL REQUIREMENT.

J. Helms 8-31-89
U.S. SOIL CONSERVATION SERVICE

This Construction Plan is approved for Soil Erosion and Sediment Control by the Howard Soil Conservation District.

APPROVED: *Robert W. Ziemer* 8-31-89
HOWARD S.C.D. DATE

AS BUILT
DATE: AUG. 2008

PROFILES
SCALE: HORIZ. 1" = 50'
VERT. 1" = 5'

DAILY BACKFILL: SEDIMENT CONTROLS MEASURES FOR THIS CONTRACT WILL BE IMPLEMENTED IN ACCORDANCE WITH SECT. 219 OF STD. SPECS 16.

DEPARTMENT OF PUBLIC WORKS
HOWARD COUNTY, MARYLAND

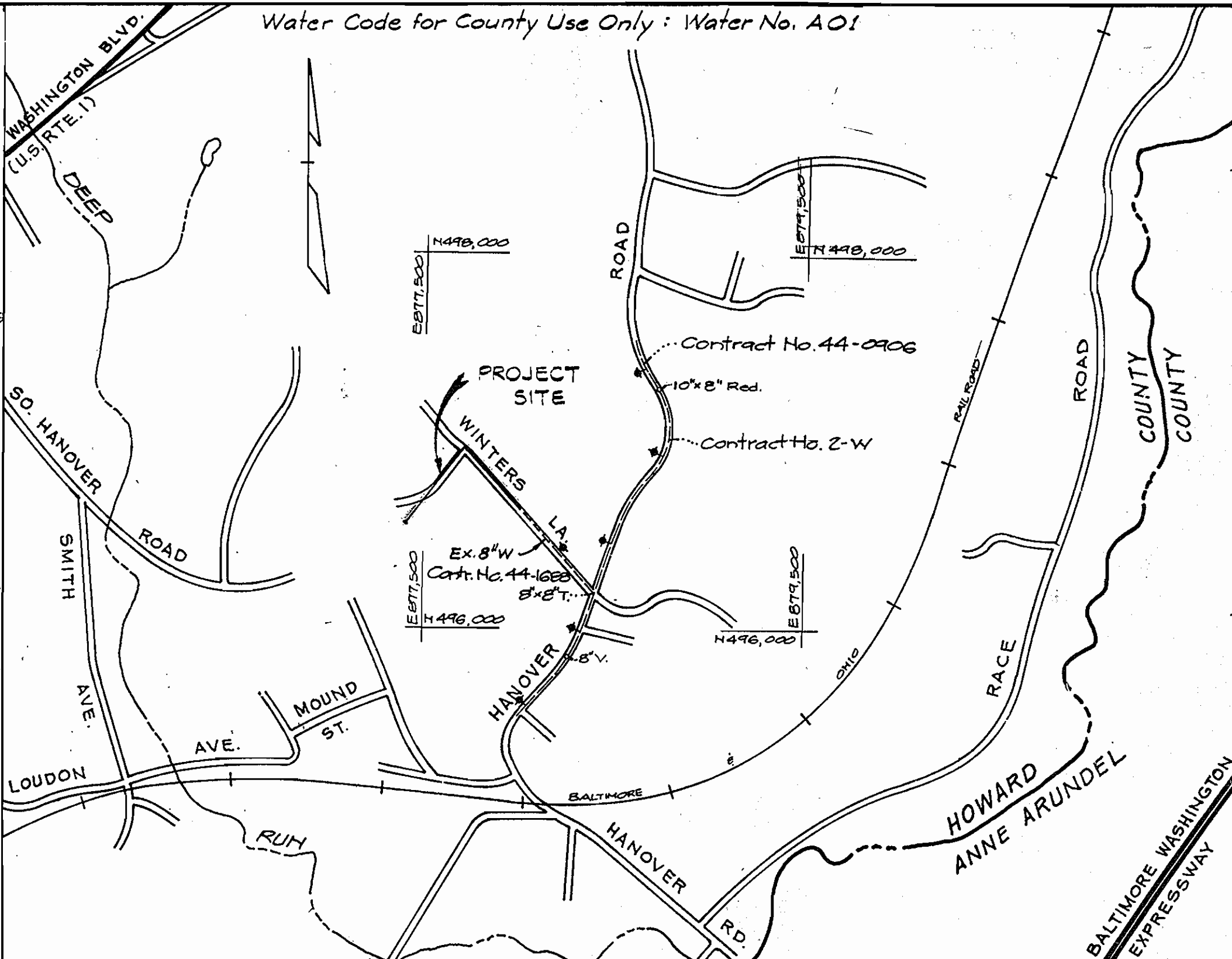
James P. ... 8-21-89
DIRECTOR OF PUBLIC WORKS DATE

Robert W. Ziemer 8-21-89
CHIEF, BUREAU OF UTILITIES DATE

HICKS ENGINEERING CO., INC.
ENGINEERS - SURVEYORS - PLANNERS
200 E. JOPPA ROAD - SUITE 402
TOWSON MARYLAND 21204

Donald E. Hicks
DONALD E. HICKS, P.E. REG. NO. 8676

DES: T.A.W.	BY	NO.	REVISION	DATE
DRN: L.A.W.				
CHK: D.E.H.				
DATE:				



Water Code for County Use Only: Water No. A01

Type of Buildings: Residential
Number of Parcels: 6
No. of Water House Conn.: 6
Drainage Area: Patapsco

VICINITY MAP
SCALE: 1" = 600'

- ### GENERAL NOTES
- Approximate Location of existing Mains are shown. The Contractor shall take all necessary precautions to protect existing mains and services and maintain uninterrupted supply. Any damage incurred shall be repaired immediately to the satisfaction of the Engineer at the Contractor's expense.
 - All Horizontal Controls are based on Maryland State Coordinates.
 - All Vertical Controls are based on U.S.C.S. Datum.
 - All pipe Elevations shown are invert Elevations.
 - Clear all utilities by a minimum of 6" Clear all poles by 2'-0" minimum or tunnel as required.
 - For Details Not Shown On The Drawings, And For Materials And Construction Methods, Use Howard County Design Manual, Volume IV, Standard Specifications And Details For Construction. The Contractor Shall Have a Copy Of Volume IV On The Job.
 - Where Test Pits Have Been Made On Existing Utilities, They Are Noted By The Symbol [X] At The Location Of The Test Pit. A Note Or Notes Containing The Results Of The Test Pit Or Pits Is Included On The Drawings. Existing Utilities In The Vicinity Of The Proposed Work For Which Tests Have Not Been Dug Shall Be Located By The Contractor Two Weeks In Advance Of Construction Operations At The Owners Expense.
 - Contractor shall notify the following Utilities Companies or Agencies at least five working days before starting work shown on these plans.
 - C&P Telephone Company 1-800-257-7777
 - State Highway Administration 531-5533
 - Baltimore Gas & Electric Co. Contractor Services 850-4620
 - Baltimore Gas & Electric Co. Underground Damage Control ... 850-9004
 - Baltimore Gas & Electric Co. Trouble Shooting 296-3001
 - Miss Utility 800-257-7777
 - Colonial Pipeline Co. 795-1300
 - Bureau of Utilities, Howard County Dept. of Public Works ... 992-2366
 - Trees and shrubs are to be protected from damage to maximum extent. Trees and shrubs located within the construction strip are not to be removed or damaged by the contractor.
 - Contractor shall remove trees, stumps and roots along line of excavation. Payment for such removal shall be included in the unit price for construction of the main.
 - All water mains shall be D.I.F. unless otherwise noted.
 - Tops of all water mains to have a minimum of 3 1/2' cover unless otherwise noted.
 - Valves adjacent to tees shall be strapped to tees.
 - All fittings shall be buttressed or anchored with concrete in accordance with the Standard Details unless otherwise provided for on the drawings.
 - Fire Hydrants shall be set to the bury line elevations shown on the drawings. All Fire Hydrants shall be strapped and buttressed with concrete in accordance with the Standard Details. Soil around the fire hydrants shall be compacted in accordance with Section 1003 of the Standard Specifications.
 - The Contractor shall not operate any water main valves on the existing water system.

8" WATER MAIN
CONTRACT NO. 44-1937

SEDIMENT CONTROL PLAN
WINTERS LANE WATER EXTENSION

FIRST ELECTION DISTRICT
HOWARD COUNTY, MARYLAND
CAPITAL PROJECT W-8689

SCALE AS SHOWN
SHEET 2 OF 2

600 SCALE MAP NO. 38 BLOCK NO. 14