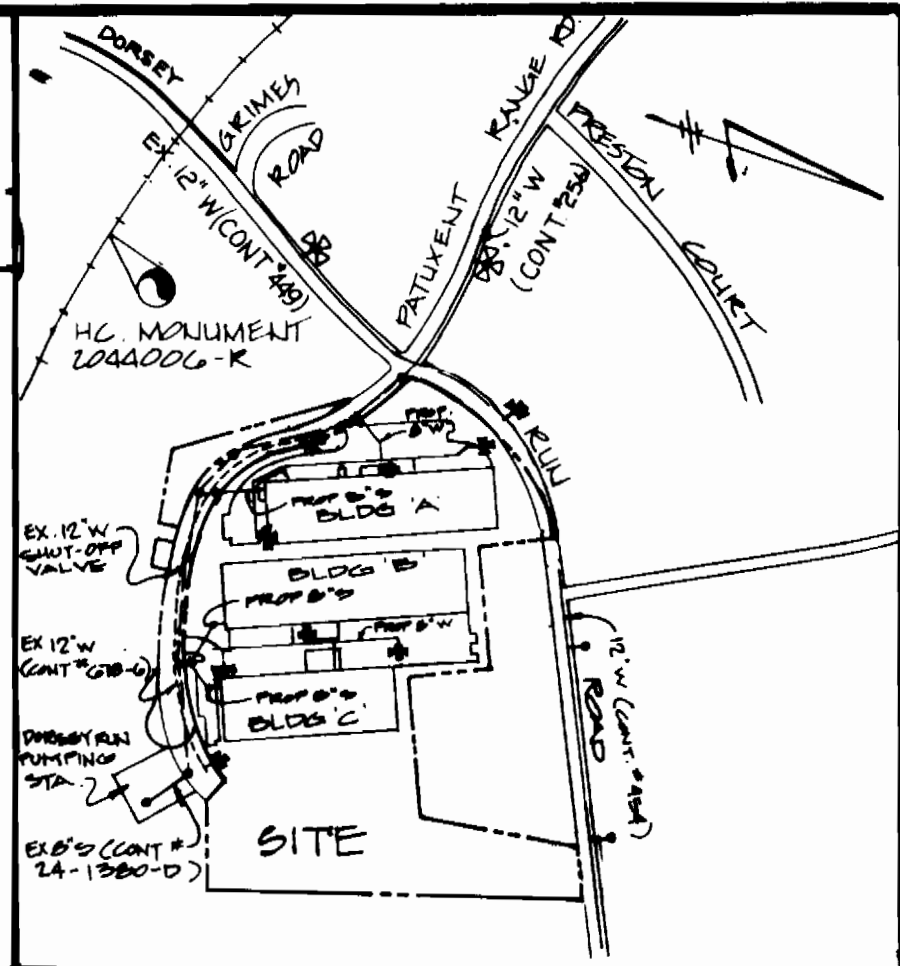
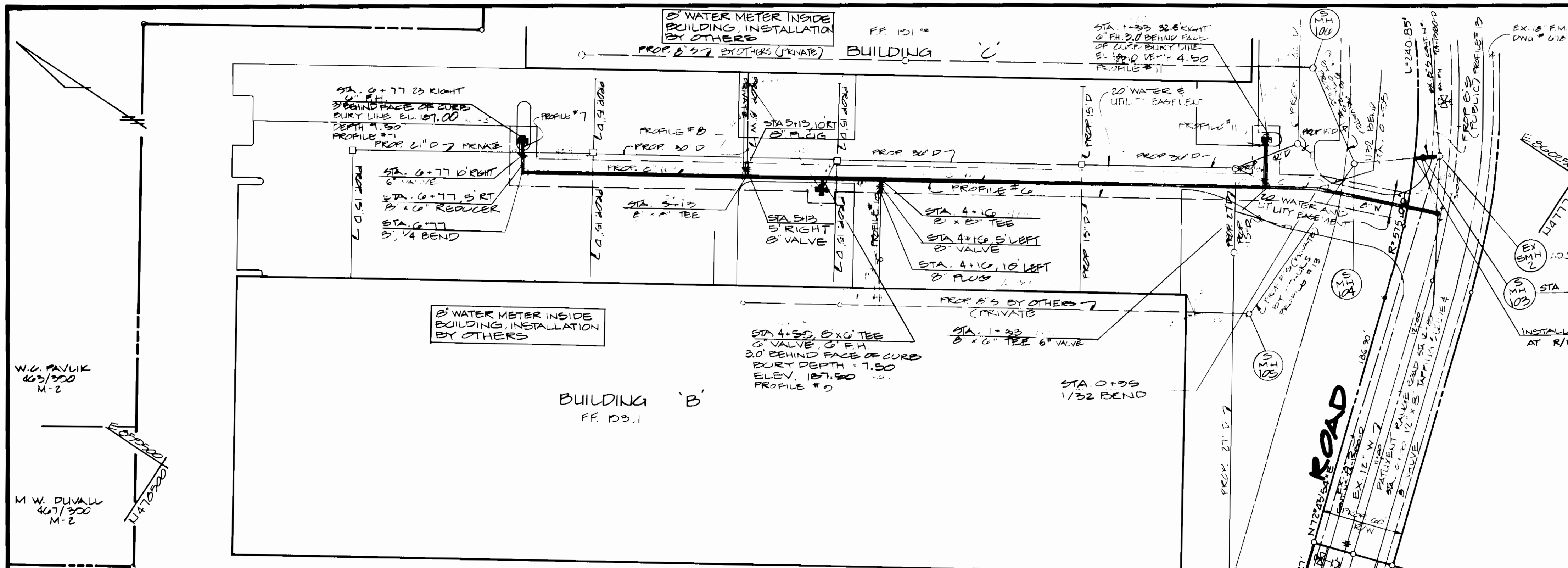


TYPE OF BUILDINGS	WAREHOUSING
NUMBER OF LOTS	3
Nº OF WATER HOUSE CONNECTIONS	3
WATER CODE	B-2
Nº OF SEWER HOUSE CONNECTIONS	2
DRAINAGE AREA	DORSEY RUN
SEWER CODE	22.0000



VICINITY MAP
SCALE 1"=100'

BEARINGS AND COORDINATES AS SHOWN HEREON ARE BASED ON THE MARYLAND STATE PLANE COORDINATE SYSTEM AS ADOPTED BY HOWARD COUNTY, AS REFERENCED FROM TRAVERSE STATION N 2244200 N 4160222.101 E 850000.200



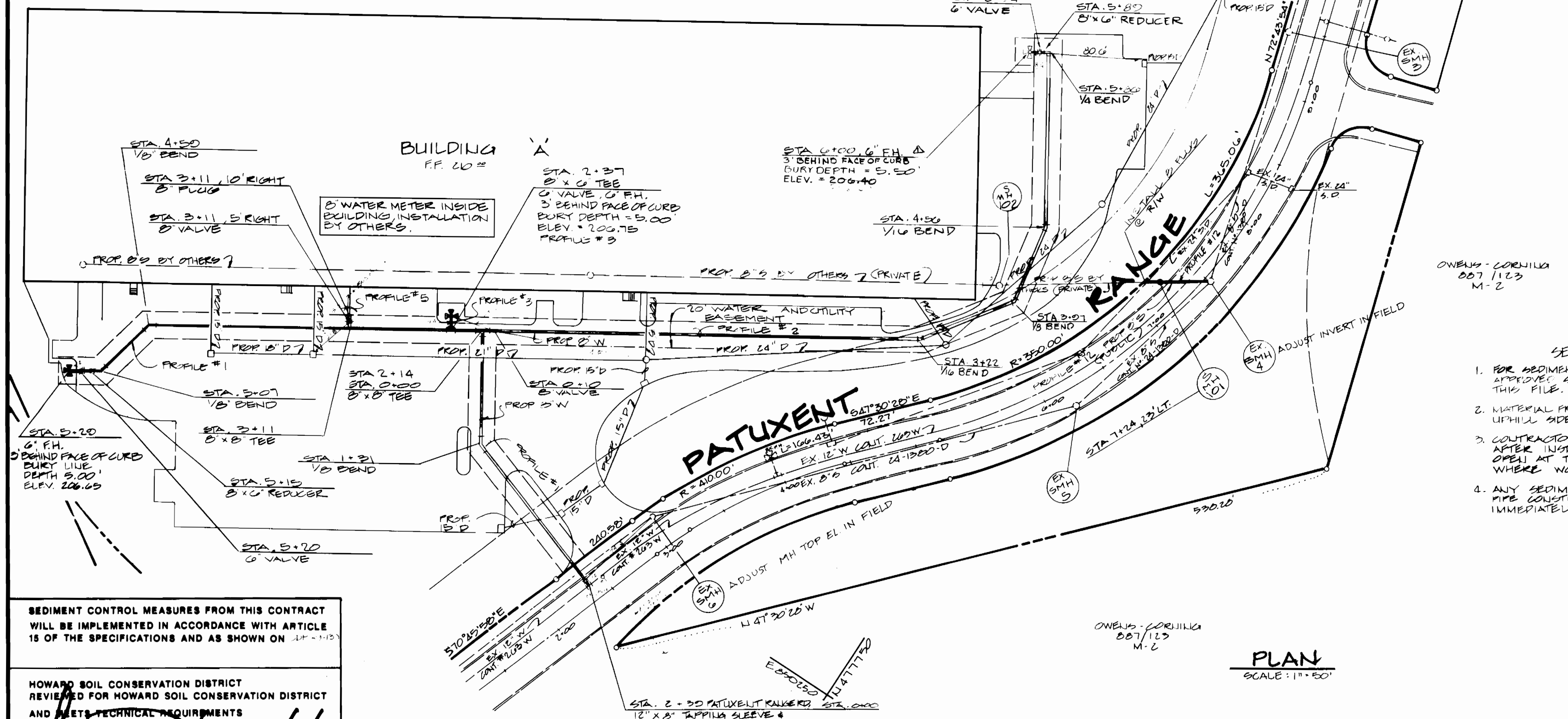
- GENERAL NOTES (CONT.)**
- All sewer mains shall be O.S.P., R.O.S.P., V.G.P.X., A.C.P., Glass 2400 or P.V.C. unless otherwise noted.
 - The contractor shall provide a joint in all sewer mains within 2' of the exterior manhole wall.
 - All manholes shall be 48" inside diameter unless otherwise noted.
 - Manholes shown with 12" and 18" walls are for brick manholes only.
 - Manholes located within proposed roadway shall have standard heavy traffic manhole frame and cover, standard detail Q1.11.
 - All water house connections shall be made in accordance with A.W.W.A. All D.R. fittings shall be in accordance with A.W.W.A. Specification C-15B ductile iron compact fittings, 8-inch through 12-inch for water & other liquids.

- GENERAL NOTES**
- Approximate location of existing mains are shown. The contractor shall take all necessary precautions to protect existing mains and services and maintain uninterrupted supply. Any damage incurred shall be repaired immediately to the satisfaction of the engineer at the contractor's expense.
 - All horizontal controls are based on U.S.G.S. data.
 - All vertical controls are based on U.S.G.S. data.
 - All pipe elevations shown are invert elevations.
 - Clear all utilities by a minimum of 3'.
 - For details not shown on the drawings and for materials and construction methods, use Howard County Design Manual, Volume IV, Standard Specifications and Details for Construction. The contractor shall have a copy of Volume IV on the job.
 - Where test pits have been made on existing utilities, they are noted by the symbol . The location of the test pit & note or notes containing the results of the test pit or pits is included on the drawings. Existing utilities in the vicinity of the proposed work for which test pits have not been dug shall be verified by the contractor to his own satisfaction. Any damage to existing facilities due to the contractor's negligence shall be repaired at the contractor's expense.
 - Contractor shall notify the following utilities or agencies at least 14 working days before starting work shown on these plans:

State Highway Administration	531-5533
Baltimore Gas & Electric Company	561-2555
Contractor Services	234-5621
Underground Damage Control	280-8013
Trouble Shooting	1-800-9188
Mesa Utilities	785-1380
Colonial Pipeline Company	
Bureau of Utilities	882-5366
 - Trees and shrubs are to be protected from damage to maximum extent. Trees and shrubs located within the construction strip are not to be removed or damaged by the contractor. Contractor shall remove trees, stumps and roots along line of excavation in the standard details unless otherwise specified. Soil around the fire hydrant shall be compacted in accordance with Section 1003 and 1008 of the standard specifications.
 - The contractor shall not operate any water main valves on the existing water system.
 - Water main and sewer house connection lines must be placed so as to have at least one (1) foot separation from the sewer main or sewer house connection as they pass about it.
 - All water house connections shall be inside meter settings.
 - All D.P. fittings shall be in accordance with A.W.W.A. Specification C-15B DUCTILE IRON COMPACT FITTING, 3-INCH THROUGH 12-INCH FOR WATER & OTHER LIQUIDS.

OWENS-CORNING
007/123
M-2

- SEDIMENT CONTROL NOTES**
- FOR SEDIMENT CONTROL FOR THIS CONTRACT S.D.P. 00-130 SEE APPROVED SEDIMENT CONTROL PLAN (SHEETS 4 & 5 OF 12) FOR THIS FILE.
 - MATERIAL FROM TRENCH EXCAVATION SHALL BE PLACED ON THE UPHILL SIDE OF TRENCH.
 - CONTRACTOR TO BACKFILL, COMPACT AND STABILIZE IMMEDIATELY AFTER INSTALLATION OF PIPE. NO TRENCHES WILL BE LEFT OPEN AT THE END OF EACH DAY, EXCEPT THAT PORTION WHERE WORK HAS STOPPED.
 - ANY SEDIMENT CONTROL FACILITIES ENCOUNTERED DURING PIPE CONSTRUCTION TO BE RETURNED TO ORIGINAL CONDITION IMMEDIATELY UPON COMPLETION OF THAT PORTION OF WORK.



OWNER / DEVELOPER
DORSEY RUN INDUSTRIAL PARK LIMITED PARTNERSHIP
ARUNDEL BUILDING, SUITE 203
110 WEST ROAD
BALTIMORE, MARYLAND 21224

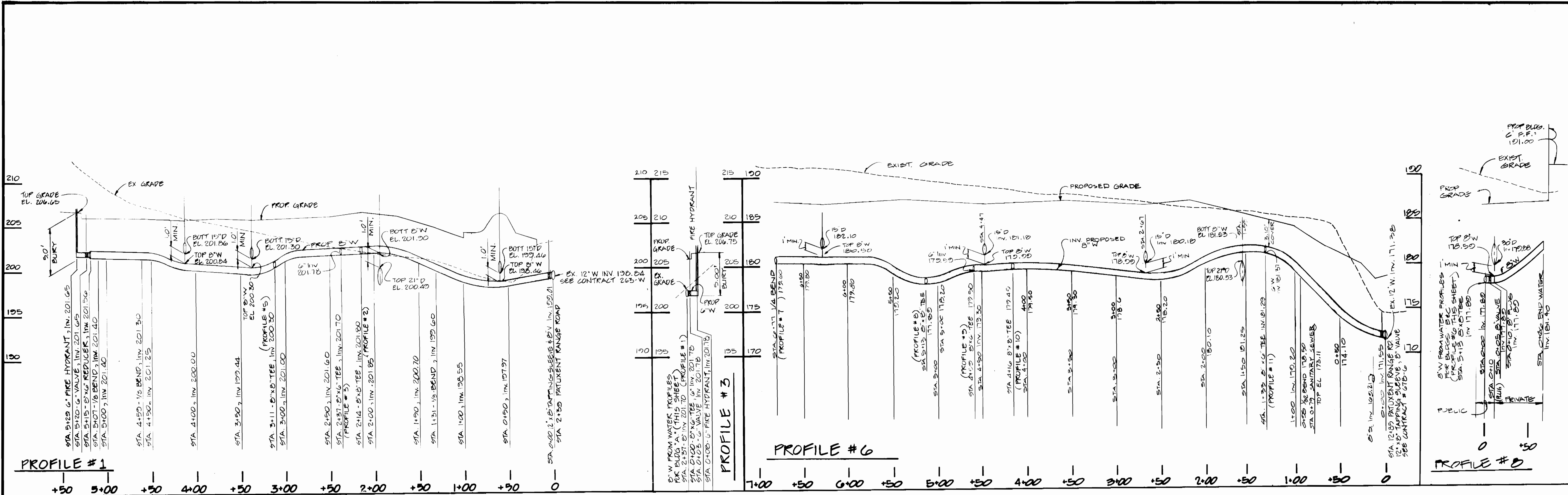
QUANTITIES		
ITEM	ESTIMATED AS BUILT	SUPPLIER
(SEWER QUANTITIES)		
8" P.V.C.	64 LF.	
48" MANHOLE	2 EA.	
8" PLUG	2 EA.	
(WATER QUANTITIES)		
1/4 BEND 8"	2 EA.	
1/2 BEND 8"	2 EA.	
3/4 BEND 8"	3 EA.	
1/2 BEND 6"	1 EA.	
1/8 BEND 6"	4 EA.	
FIRE HYDRANT	6 EA.	
8" X 8" TEE	4 EA.	
8" VALVE	4 EA.	
1/4 BEND 6"	2 EA.	
6" WATER	20 LF.	
8" WATER	1024 LF.	
8" VALVE	6 EA.	
8" X 6" REDUCER	3 EA.	
8" X 6" TEE	3 EA.	

SEDIMENT CONTROL MEASURES FROM THIS CONTRACT WILL BE IMPLEMENTED IN ACCORDANCE WITH ARTICLE 15 OF THE SPECIFICATIONS AND AS SHOWN ON

HOWARD SOIL CONSERVATION DISTRICT
REVISED FOR HOWARD SOIL CONSERVATION DISTRICT AND MEETS TECHNICAL REQUIREMENTS
[Signature] DATE 5/9/89
SOIL CONSERVATION SERVICE

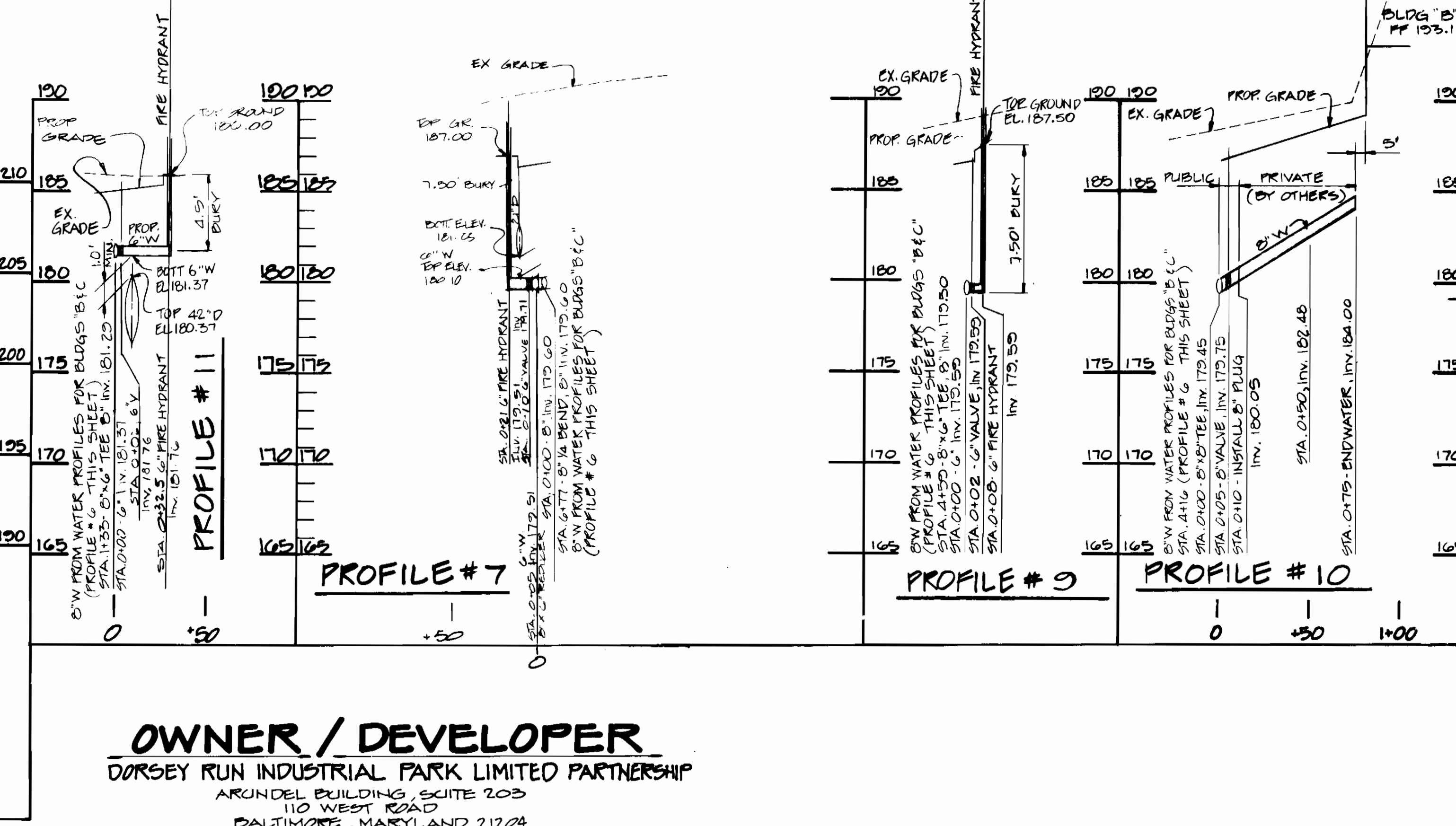
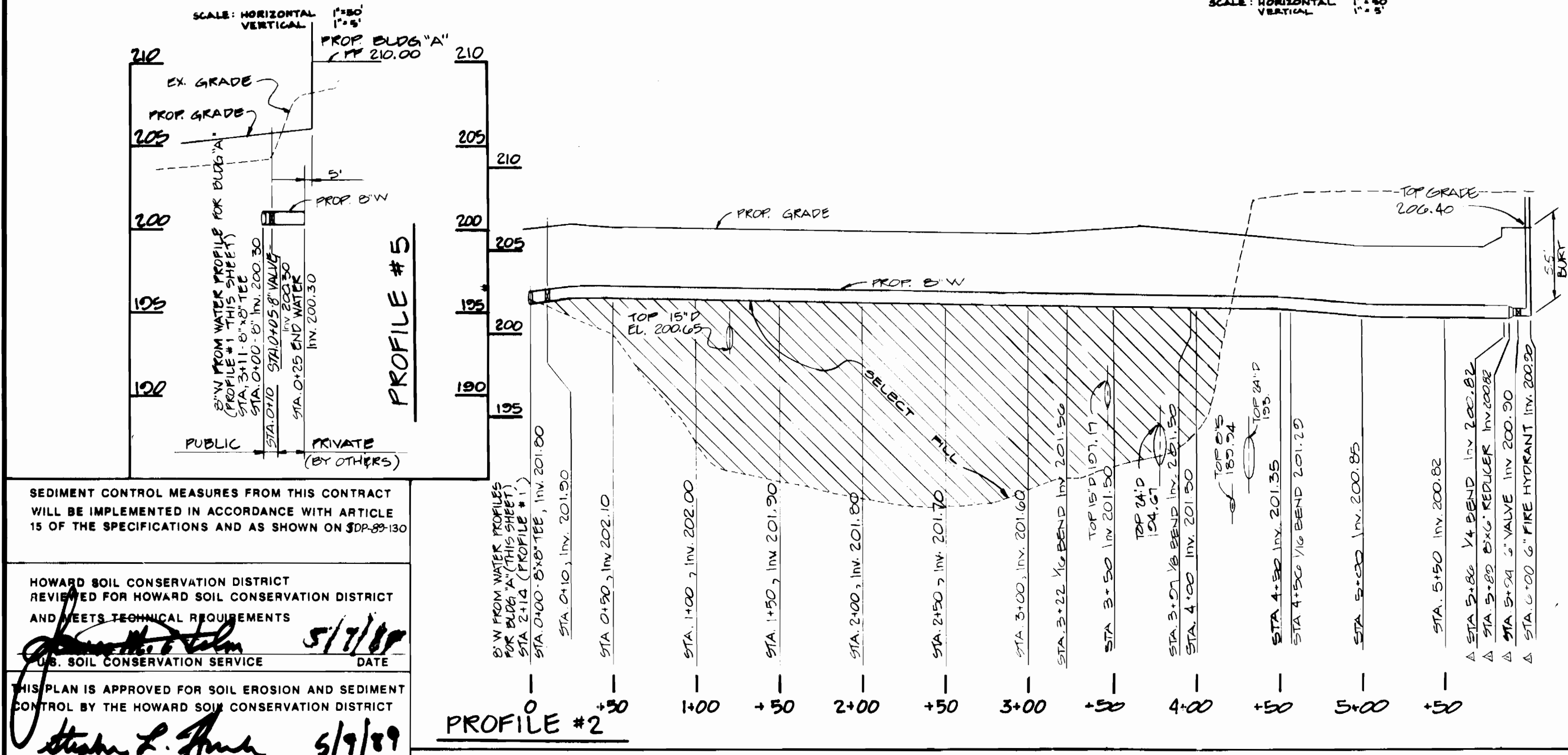
THIS PLAN IS APPROVED FOR SOIL EROSION AND SEDIMENT CONTROL BY THE HOWARD SOIL CONSERVATION DISTRICT
[Signature] DATE 4/9/89
HOWARD SOIL CONSERVATION DISTRICT

DEPARTMENT OF PUBLIC WORKS HOWARD COUNTY, MARYLAND Director of Public Works: <i>[Signature]</i> DATE 5/10/89 Chief Bureau of Engineering: <i>[Signature]</i> DATE 5-6-89 Chief Bureau of Utilities: <i>[Signature]</i> DATE 5-6-89 Chief Land Development Division: <i>[Signature]</i> DATE	D.S. THALER & ASSOC. INC. 11 WARREN ROAD BALTIMORE, MARYLAND 21208 (301) 484-4100		DES. RLR	RR	1	MOVED FH TO STA 6+00	6-12-90
			DRN. MDF	CHK. THM	DATE 11-23-88	BY	NO.
PUBLIC WATER & SEWER PLAN CONTRACT No. 24-1932+D S.D.P. 00-130			PUBLIC WATER AND SEWER PLAN DORSEY RUN INDUSTRIAL PARK 6TH ELECTION DISTRICT, HOWARD COUNTY, MD. PARCEL 100 DATE 12-88			SCALE AS SHOWN	
						SHEET 1 OF 3	



WATER PROFILE FOR BUILDING 'A'

WATER PROFILE FOR BUILDINGS 'B' & 'C'



SEDIMENT CONTROL MEASURES FROM THIS CONTRACT WILL BE IMPLEMENTED IN ACCORDANCE WITH ARTICLE 15 OF THE SPECIFICATIONS AND AS SHOWN ON SDP-89-130

HOWARD SOIL CONSERVATION DISTRICT REVIEWED FOR HOWARD SOIL CONSERVATION DISTRICT AND MEETS TECHNICAL REQUIREMENTS

5/7/89 DATE

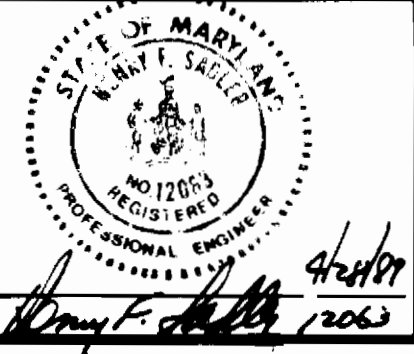
5/9/89 DATE

OWNER / DEVELOPER
 DORSEY RUN INDUSTRIAL PARK LIMITED PARTNERSHIP
 ARUNDEL BUILDING, SUITE 203
 110 WEST ROAD
 BALTIMORE, MARYLAND 21224

DEPARTMENT OF PUBLIC WORKS
 HOWARD COUNTY, MARYLAND

5/10/89 DATE
 5/6/89 DATE

D.S. THALER & ASSOC. INC.
 11 WARREN ROAD
 BALTIMORE, MARYLAND 21208
 (301) 484-4100



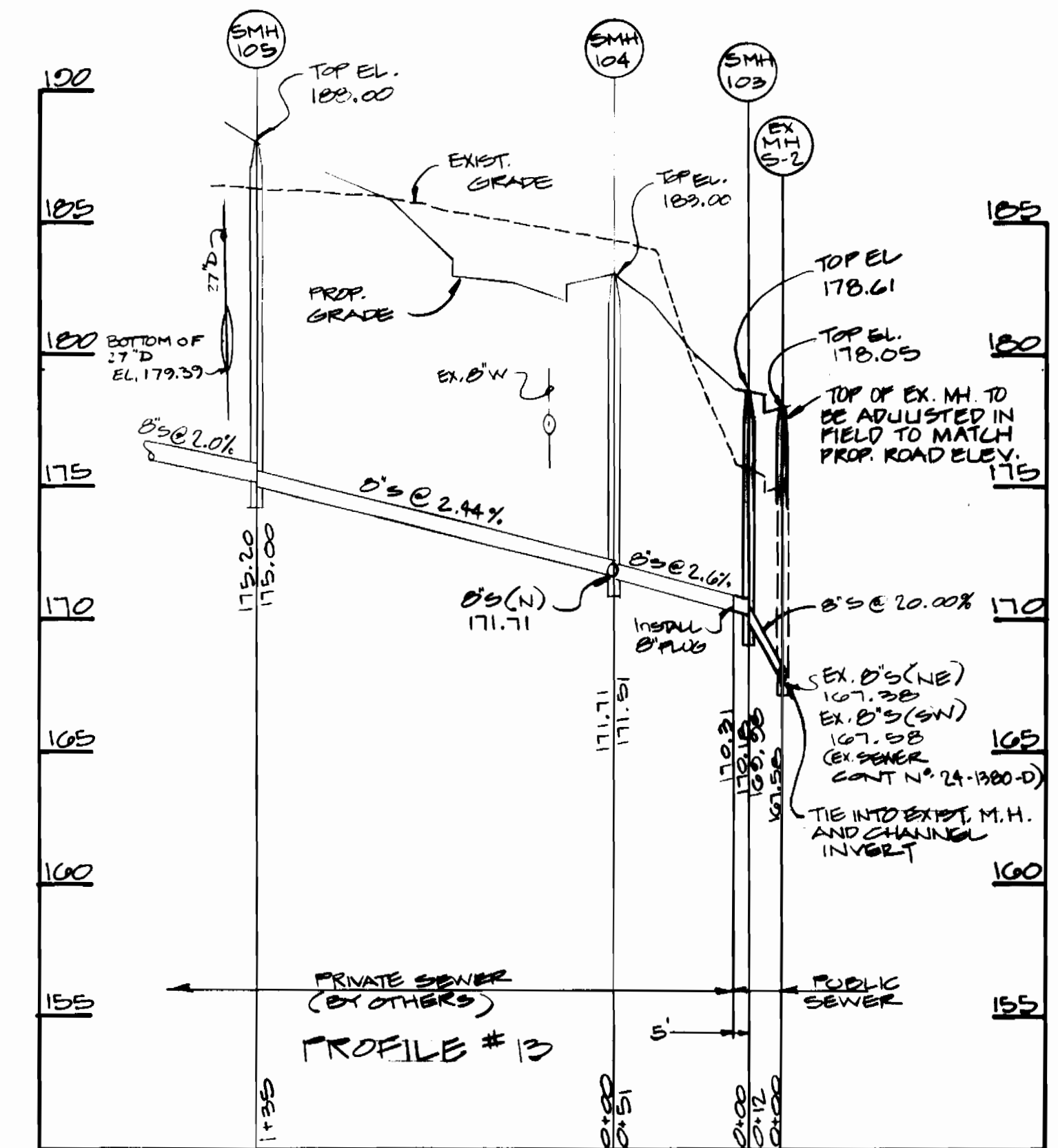
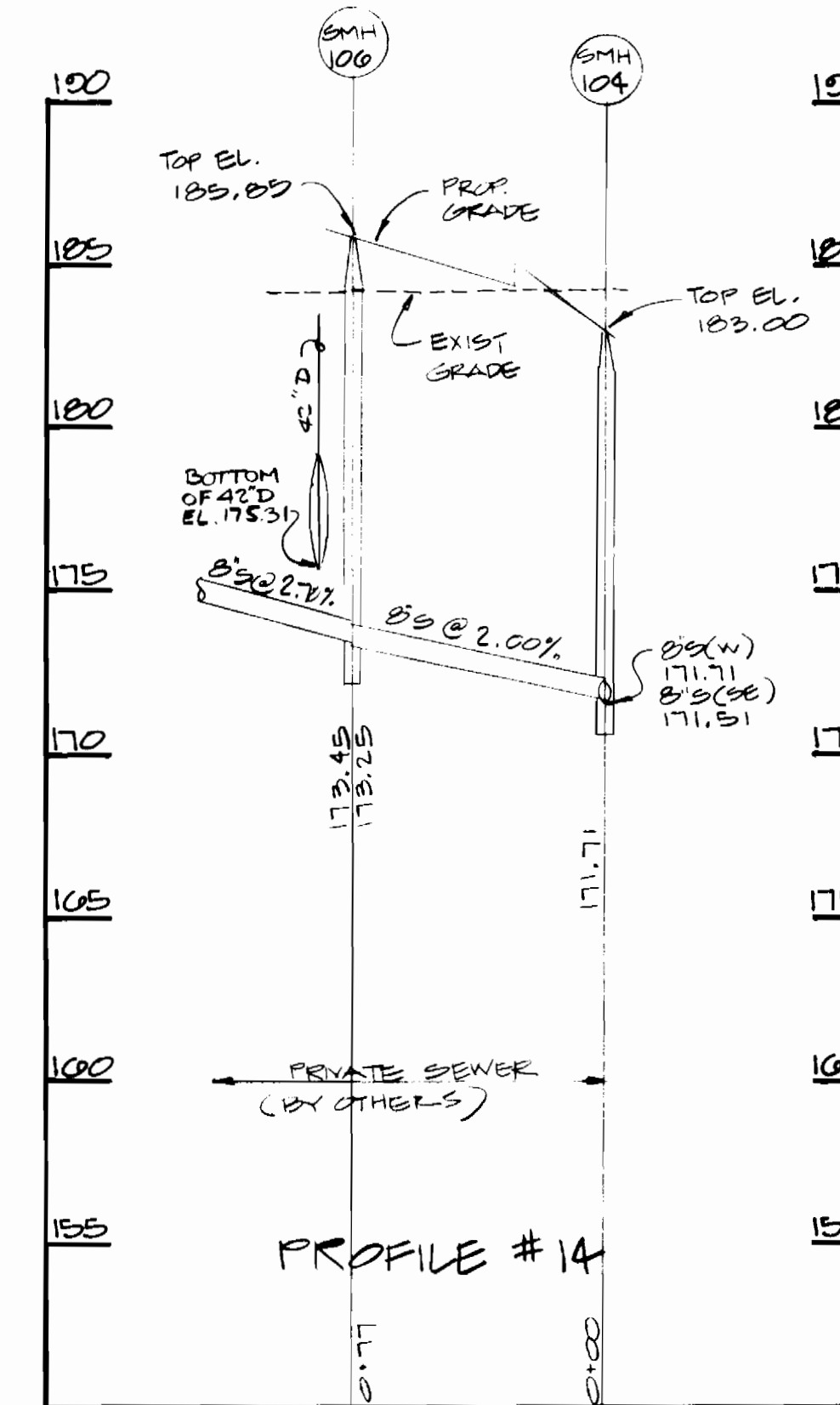
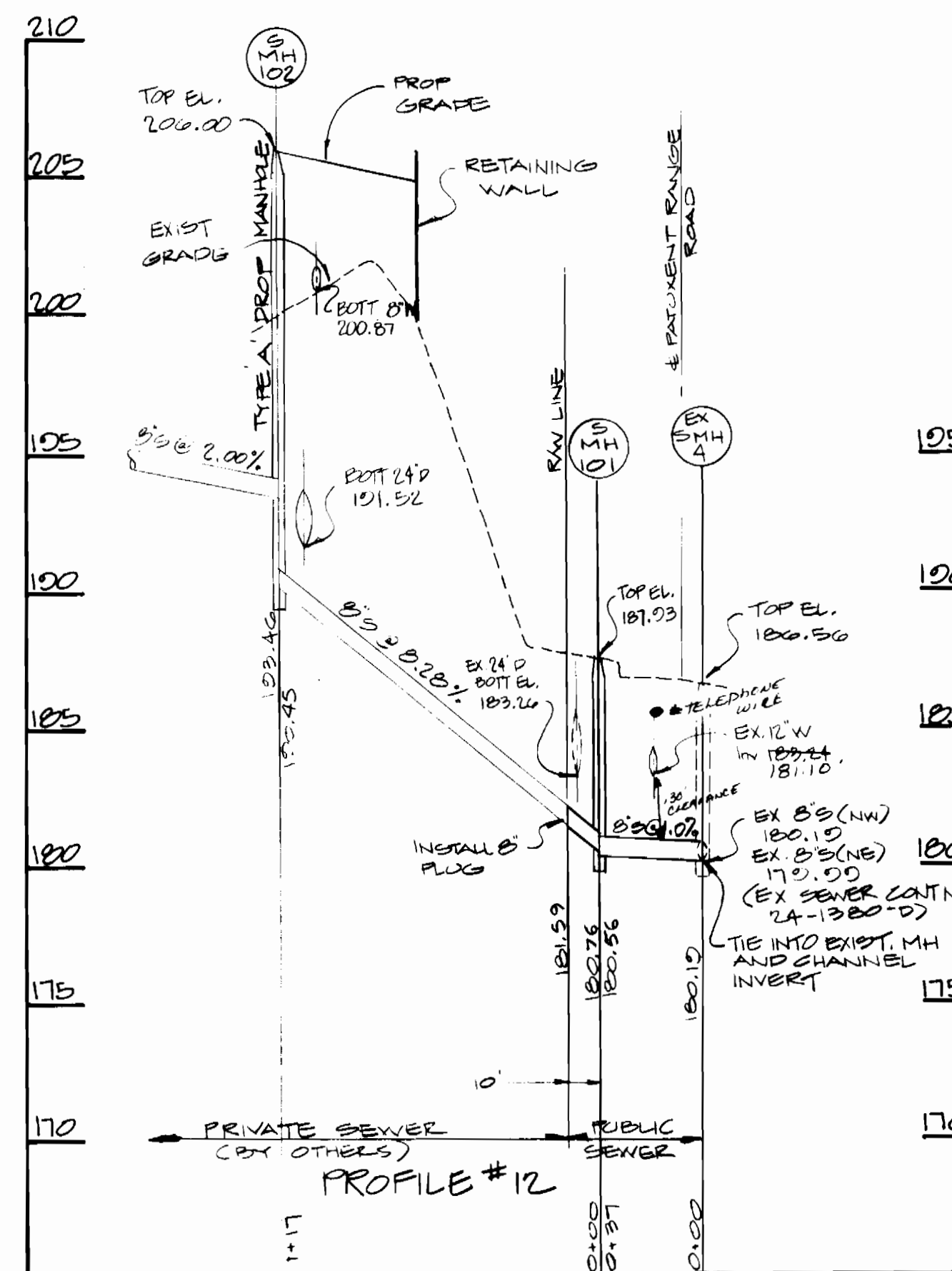
DES. RLR	RLR	Δ	MOVED FH TO STA 6+00	6-12-90
DRN. MDF				
CHK. THM				
DATE 11-25-88				
BY NO.		REVISION		DATE

WATER PROFILES

CONTRACT NO. 24-1932-D
DORSEY RUN INDUSTRIAL PARK
 6TH ELECTION DISTRICT
 HOWARD CO., MD

TAX MAP 48 PARCEL 109 DATE 12/88

SCALE AS SHOWN SHEET 2 OF 3



SEWER PROFILE FOR BUILDINGS

SCALE: HORIZ. 1" = 50'
VERT. 1" = 5'

OWNER / DEVELOPER
DORSEY RUN INDUSTRIAL PARK LIMITED PARTNERSHIP
 ARUNDEL BUILDING, SUITE 203
 110 WEST ROAD
 BALTIMORE, MARYLAND 21204

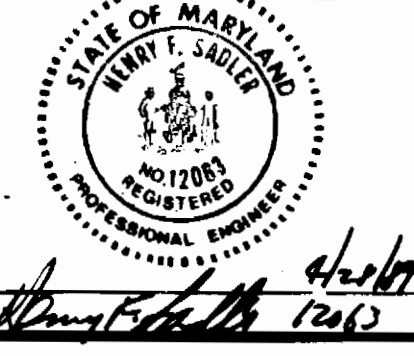
SEDIMENT CONTROL MEASURES FROM THIS CONTRACT WILL BE IMPLEMENTED IN ACCORDANCE WITH ARTICLE 15 OF THE SPECIFICATIONS AND AS SHOWN ON SDP-89-130

HOWARD SOIL CONSERVATION DISTRICT REVIEWED FOR HOWARD SOIL CONSERVATION DISTRICT AND MEETS TECHNICAL REQUIREMENTS
James M. ... 5/9/89
 U.S. SOIL CONSERVATION SERVICE DATE

THIS PLAN IS APPROVED FOR SOIL EROSION AND SEDIMENT CONTROL BY THE HOWARD SOIL CONSERVATION DISTRICT
... 5/9/89
 HOWARD SOIL CONSERVATION DISTRICT DATE

DEPARTMENT OF PUBLIC WORKS
 HOWARD COUNTY, MARYLAND
 Director of Public Works: *...* 5/10/89
 Chief Bureau of Engineering: *...* 5/10/89
 Chief Bureau of Utilities: *...* 5/10/89
 Chief Land Development Division: *...* 5/10/89

D.S. THALER & ASSOC. INC.
 11 WARREN ROAD
 BALTIMORE, MARYLAND 21208
 (301) 484-4100



DES. M.L.T.	M.L.T.	1	CHANGED DIRECTION TO A TIE-IN DROP	5/10/89
DRN. M.L.T.				
CHK. TH.M.				
DATE 4-7-89				
BY	NO.	REVISION	DATE	

SEWER PROFILES

CONTRACT NO. 24-1932-D
DORSEY RUN INDUSTRIAL PARK
 6TH ELECTION DISTRICT SDP-89-130 HOWARD CO., MD
 TAX MAP 40 PARCEL 109 DATE: 12/88
 SCALE AS SHOWN SHEET 3 OF 3