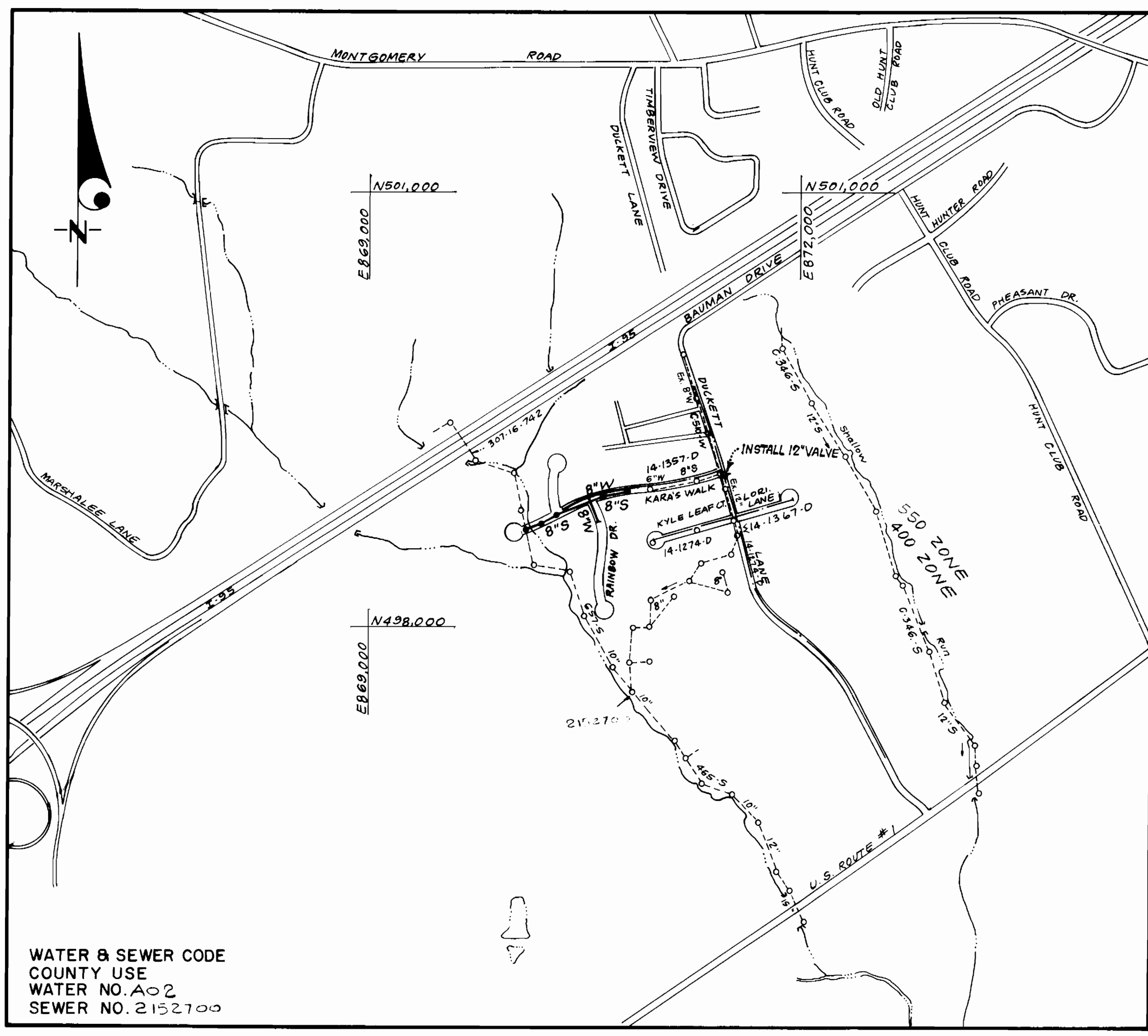


TYPE OF BUILDING	Single Family
NO. OF LOTS	11
NO. OF WHC's	12
NO. OF SHC's	12
DRAINAGE AREA	Patapsco



WATER & SEWER CODE
 COUNTY USE
 WATER NO. A02
 SEWER NO. 2152700

VICINITY MAP
 SCALE: 1" = 600'

GENERAL NOTES

- Approximate location of existing mains are shown. The contractor shall take all necessary precautions to protect existing mains and services and maintain uninterrupted supply. Any damage incurred shall be repaired immediately to the satisfaction of the Inspector, at the contractor's expense.
- All horizontal controls are based on Maryland State Coordinates.
- All vertical controls are based on U.S.G.S. Datum.
- All pipe elevations shown are invert elevations.
- Clear all utilities by a minimum of 6" clear all poles by 2'-0" minimum or tunnel as required. Any cost incurred to the contractor for tunneling or bracing at poles shall be included in unit prices bid for excavation and backfill.
- For details not shown on the drawings use Howard County Standard Details.
- For materials and construction methods use Howard County Standard Specifications and Howard County Design Manual, Volume IV. The Contractor shall have Volume IV on the job.
- Contractor shall locate existing utilities a minimum of two (2) weeks in advance of construction operations in the vicinity of proposed utilities at his own expense.
- Contractor shall notify the following utilities or agencies at least five (5) working days before starting work shown on these plans.
 - State Highway Administration - 531-5533
 - Baltimore Gas & Electric Company - Underground Damage Control - 859-9004
 - Baltimore Gas & Electric Company - Contractor Services - 850-4620
 - Baltimore Gas & Electric Company - Trouble Shooting - 298-9001
 - "Miss Utility" - 1-800-257-7777
 - Chesapeake & Potomac (C & P) Telephone Company - 1-800-257-7777
 - Bureau of Utilities Howard County - 992-2366
 - Colonial Pipeline Company - 795-1390
- Trees are to be protected from damage to maximum extent. Trees located within the construction strip are not to be removed or damaged by the contractor.
- Contractor shall remove trees, stumps, and roots along line of excavation as directed by the Inspector. Payment for such removal shall be included in the unit price bid for excavation and backfill.
- Place regulation "Men Working" and warning signs as required to comply with Maryland State Highway Administration Manual of Traffic Control for Highway Construction and Maintenance Operations.
- All water mains to be D.I.P. Class 52 unless otherwise noted.
- Top of all water mains to have a minimum of 3-1/2' cover unless otherwise noted.
- Valves adjacent to tees shall be strapped to tees.
- Block all fittings with concrete.
- Bury line elevations on fire hydrants shall be set to the elevations shown on the drawings. All fire hydrants shall be strapped and buttressed with concrete in accordance with standard details. Soil around the fire hydrant to be compacted in accordance with Sections 1003 & 1008 of the Standard Specifications.
- All water house connections shall be for an inside meter setting.
- The contractor shall not operate any water main valves on the existing system.
- All sewer mains shall be C.S.P.X., V.C.P.X. or P.V.C. unless otherwise noted.
- The contractor shall provide a joint in all sewer mains within 2'-0" of exterior manhole wall.
- All manholes shall be 4'-0" inside diameter, unless otherwise noted.
- Water main and water house connection lines must have a minimum of one foot separation from the sanitary sewer and sewer house connections as they cross. Except at crossings, water and sewer lines shall have a minimum horizontal separation of 10'.
- Manholes designated thus: WT, shall have a Watertight Frame and Cover.
- All D.I.P. fittings shall be in accordance with AWWA specification C-153 Ductile Iron Compact Fittings, 3-inch through 12-inch for water and other liquids.

**CONTRACT NO. 14-1931-D
 MELBOURNE ESTATES**

**SECTION ONE AREA ONE, LOTS 1 THRU 13
 HOWARD COUNTY, MARYLAND
 DEPARTMENT OF PUBLIC WORKS**

QUANTITIES			
ITEM	EST'D	AS BUILT	MATERIAL / SUPPLIER
8" W	696 LF	688 LF DIP	Atlantic States / A.P. Water & Sewer Supply
8" S	563 LF	556 LF P.V.C.	Continental / A.P. Water & Sewer Supply
4' Manholes	5 EA.	5 EA.	Consent to Abandon / Cons. Product / Robert White
Fire Hydrants	1 EA.	1 EA.	Hveller Comp. A.P. Water & Sewer Supply
8" V	2 EA.	2 EA.	Mex. Her. Comp. A.P. Water & Sewer Supply
4" SHC	345 LF	344 LF P.V.C.	Continental / A.P. Water & Sewer Supply
1" WHC	60 LF	72 LF COPP.	Vincent Burr & Anderson / Ind. A.P. Water & Sewer Supply
3/4" WHC	160 LF	208 LF COPP.	Vincent Burr & Anderson / Ind. A.P. Water & Sewer Supply
12" V.	1 EA.	1 EA.	Mex. Her. Comp. A.P. Water & Sewer Supply
Type "B" Drop Conn.	2 EA.	2 EA. P.V.C.	Continental / A.P. Water & Sewer Supply
6" Dip	165 LF DIP	95 LF DIP	Atlantic States / A.P. Water & Sewer Supply

Sediment Control Measures will be implemented in accordance with Section 219 of the Specifications & with Road Construction Plan F.88-289; Drawing 5, Sediment & Erosion Control.

REVIEWED FOR HOWARD SOIL CONSERVATION DISTRICT AND MEETS TECHNICAL REQUIREMENTS
[Signature] 3/29/89
 SIGNATURE DATE
 U.S. SOIL CONSERVATION SERVICE

This Development Plan is approved for Soil Erosion and Sediment Control by the Howard Soil Conservation District.

APPROVED:
[Signature] 3/28/89
 HOWARD S.C.D. DATE

DEPARTMENT OF PUBLIC WORKS
 HOWARD COUNTY, MARYLAND

DIRECTOR OF PUBLIC WORKS DATE: *[Signature]* 3-21-89
 CHIEF, BUREAU OF ENGINEERING DATE: *[Signature]* 3/28/89
 CHIEF, BUREAU OF UTILITIES DATE: *[Signature]* 3/28/89
 CHIEF, LAND DEVELOPMENT DIV. DATE: *[Signature]* 3/28/89

CLARK-FINEPROCK & SACKETT, INC.
 ENGINEERS - PLANNERS - SURVEYORS
 7135 MINSTREL WAY COLUMBIA MARYLAND 21045
 (301) 381-7500 BALTO. (301) 621-8100 WASH.

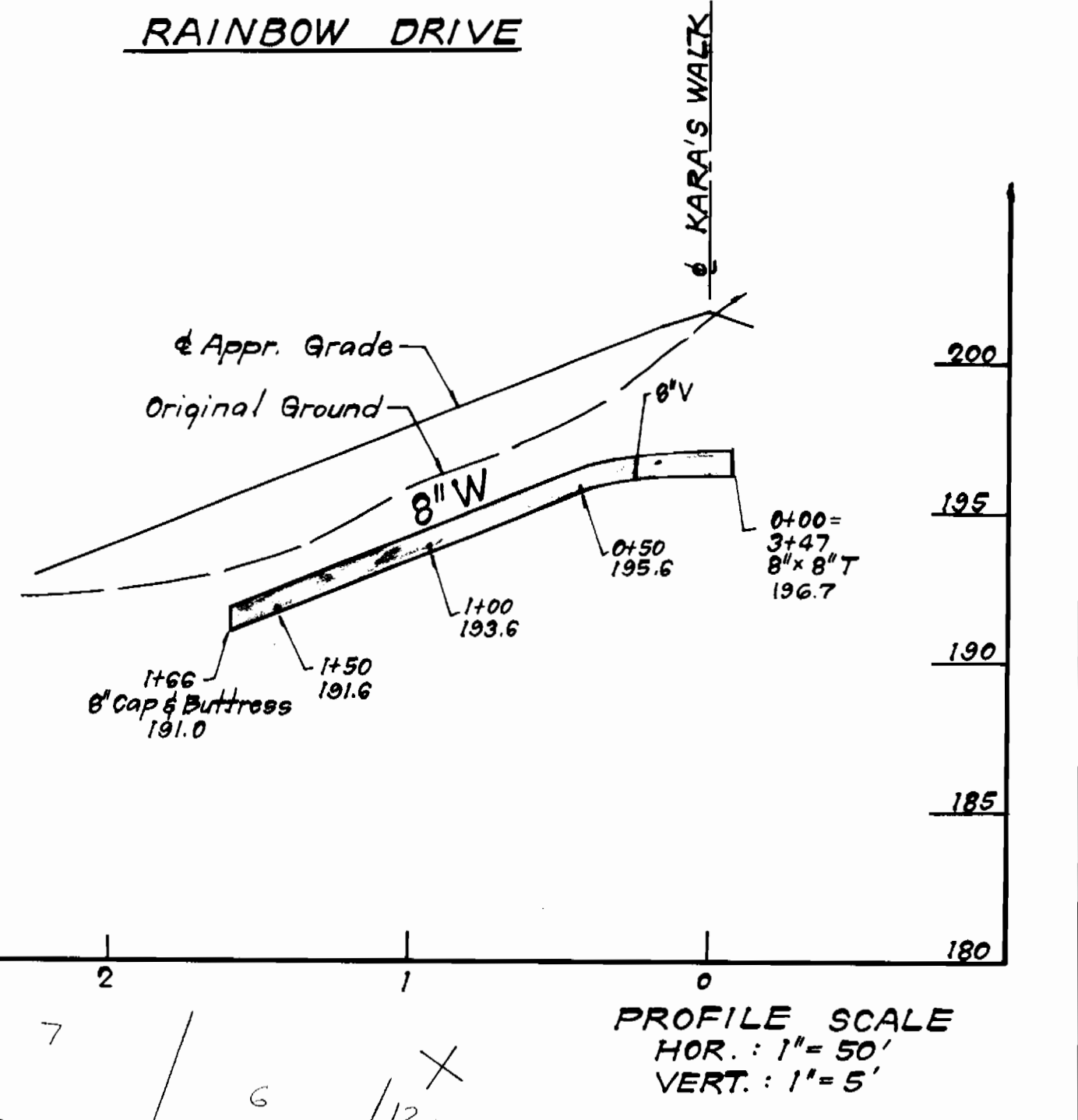
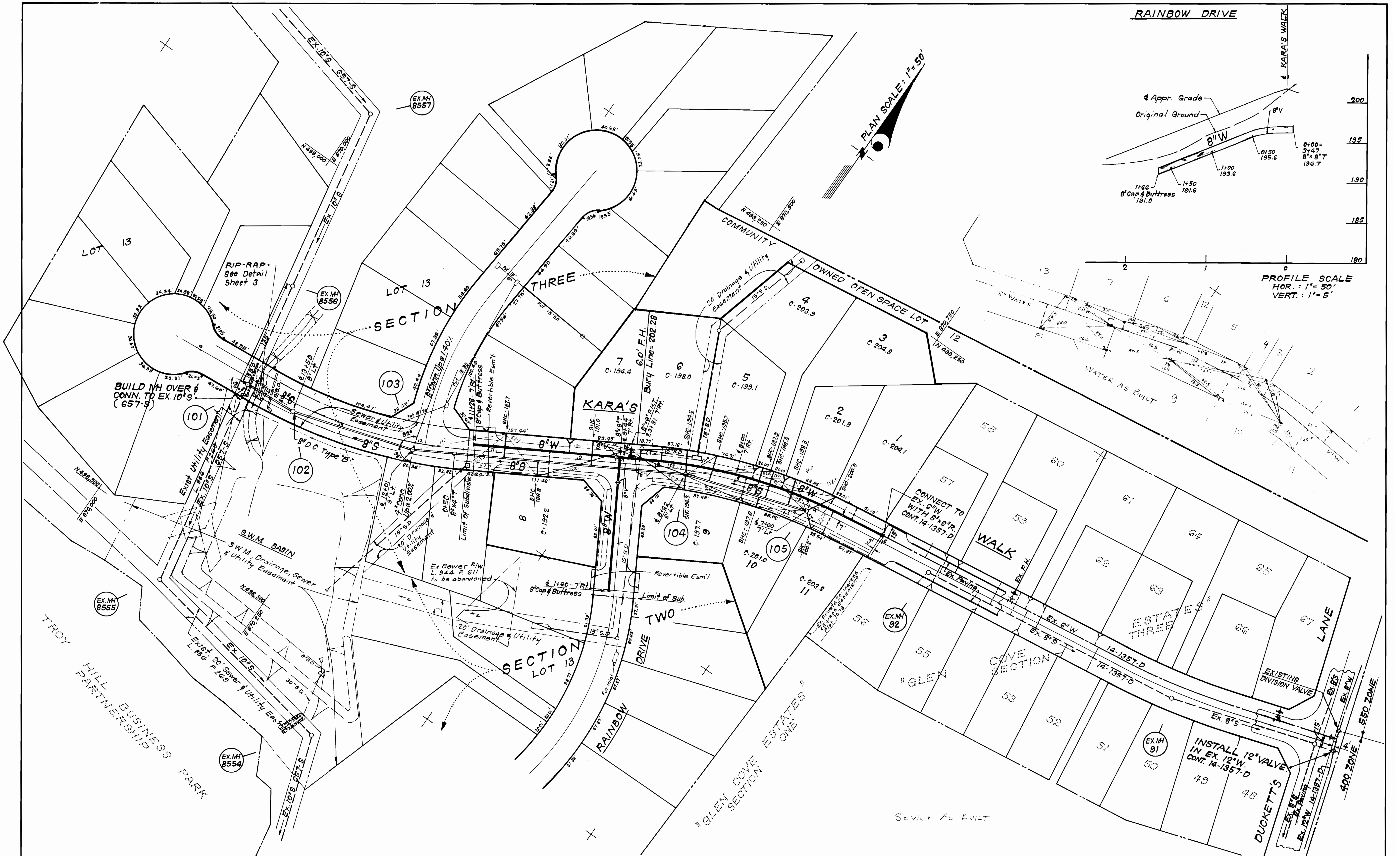


DES: CCM			
DRN: CCM			
CHK: CCM			
DATE: 6-88			

TITLE SHEET
 600' SCALE MAP NO. 37 BLOCK NO.

MELBOURNE ESTATES
 SECTION ONE AREA ONE
 LOTS 1 THRU 13
 1ST ELECTION DISTRICT
 CONTRACT NO. 14-1931-D

SCALE AS SHOWN
 SHEET 1 OF 3



PLAN SCALE: 1" = 50'

PROFILE SCALE
HOR.: 1" = 50'
VERT.: 1" = 5'

DEPARTMENT OF PUBLIC WORKS
HOWARD COUNTY, MARYLAND

Director of Public Works
3-21-89
Chief, Bureau of Utilities

Chief, Bureau of Engineering
3/31/89
Chief, Land Development Div.

CLARK · FINEPROCK & SACKETT, INC.
ENGINEERS · PLANNERS · SURVEYORS
7135 MINSTREL WAY COLUMBIA MARYLAND 21045
(301) 381-7500 BALTO. (301) 621-8100 WASH.

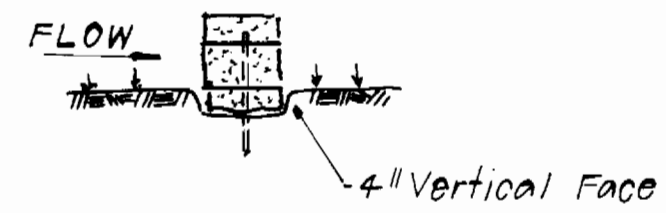


DES: CCM	JTR	1	Re-alignment & grade of 8" S bet MH 101 & 103 and added straw baidike & rip-rap @ stream	6-21-89
DRN: CCM				
CHK: CCM				
DATE: 6-88				
BY: NO.			REVISION	DATE

PLAN OF
WATER & SEWER MAINS
600' SCALE MAP NO. 38 BLOCK NO.

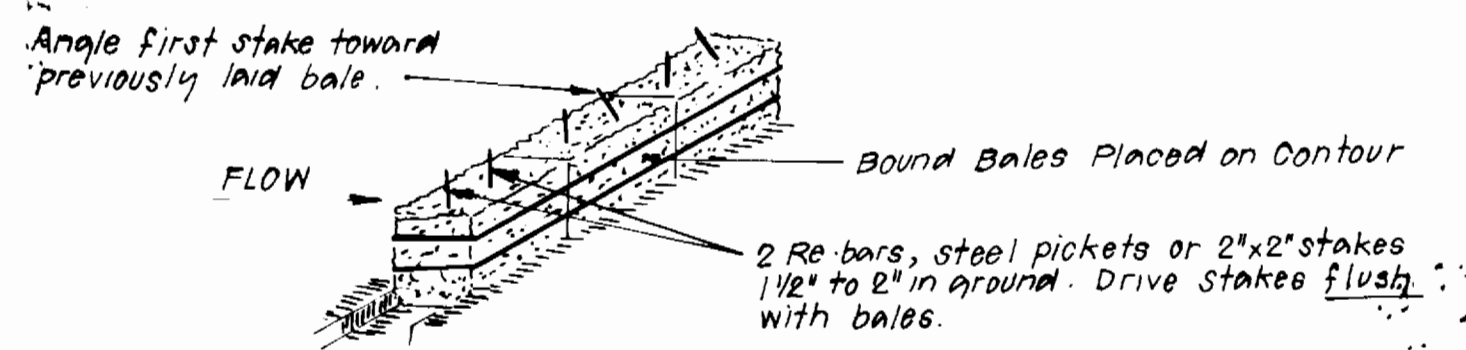
MELBOURNE ESTATES
SECTION ONE AREA ONE
LOTS 1 THRU 13
1ST ELECTION DISTRICT
CONTRACT NO. 14-1931-D

SCALE
AS SHOWN
SHEET
2 OF 3



BEDDING DETAIL

STANDARD SYMBOL
S.B.D.

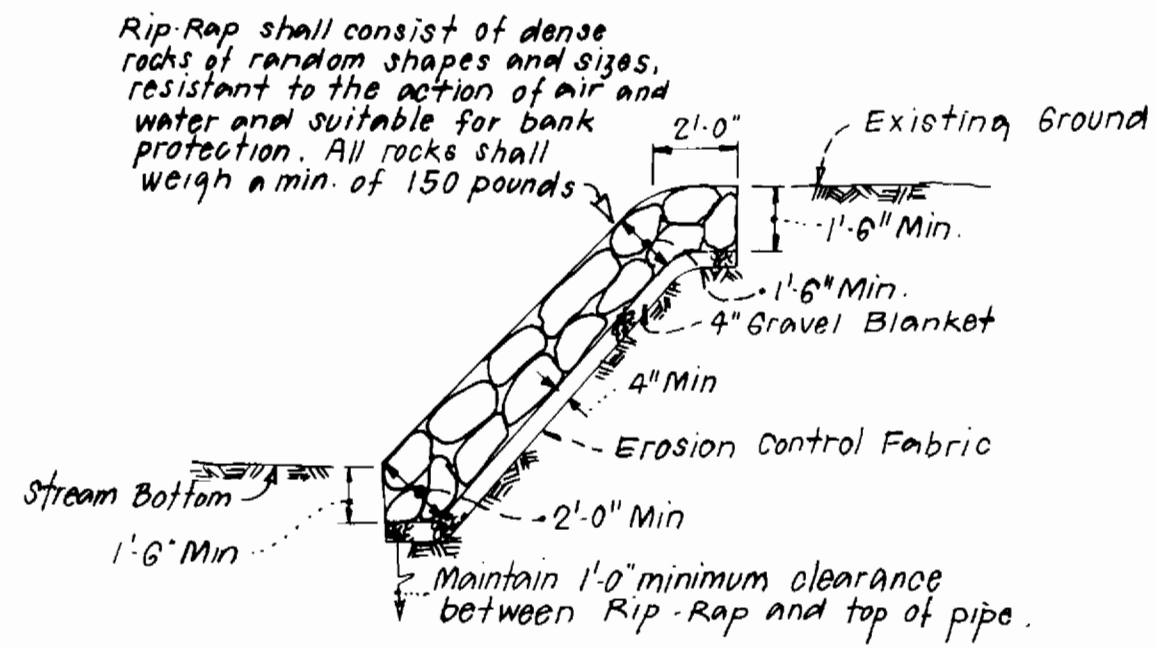


ANCHORING DETAIL

STRAW BALE DIKE
NO SCALE

Erosion Control Fabric shall be Poly Filter-X as manufactured by Carthage Mills Inc., Erosion Control Division, 124 West 86TH Street, Cincinnati, Ohio; Laurel Erosion Control Cloth as manufactured by Laurel Plastics Inc., Madison, Main, or approved equal.

Rip-Rap shall be placed 6' each side of sewer or as shown. Any disturbance to stream banks beyond these limits shall be protected with Rip-Rap.

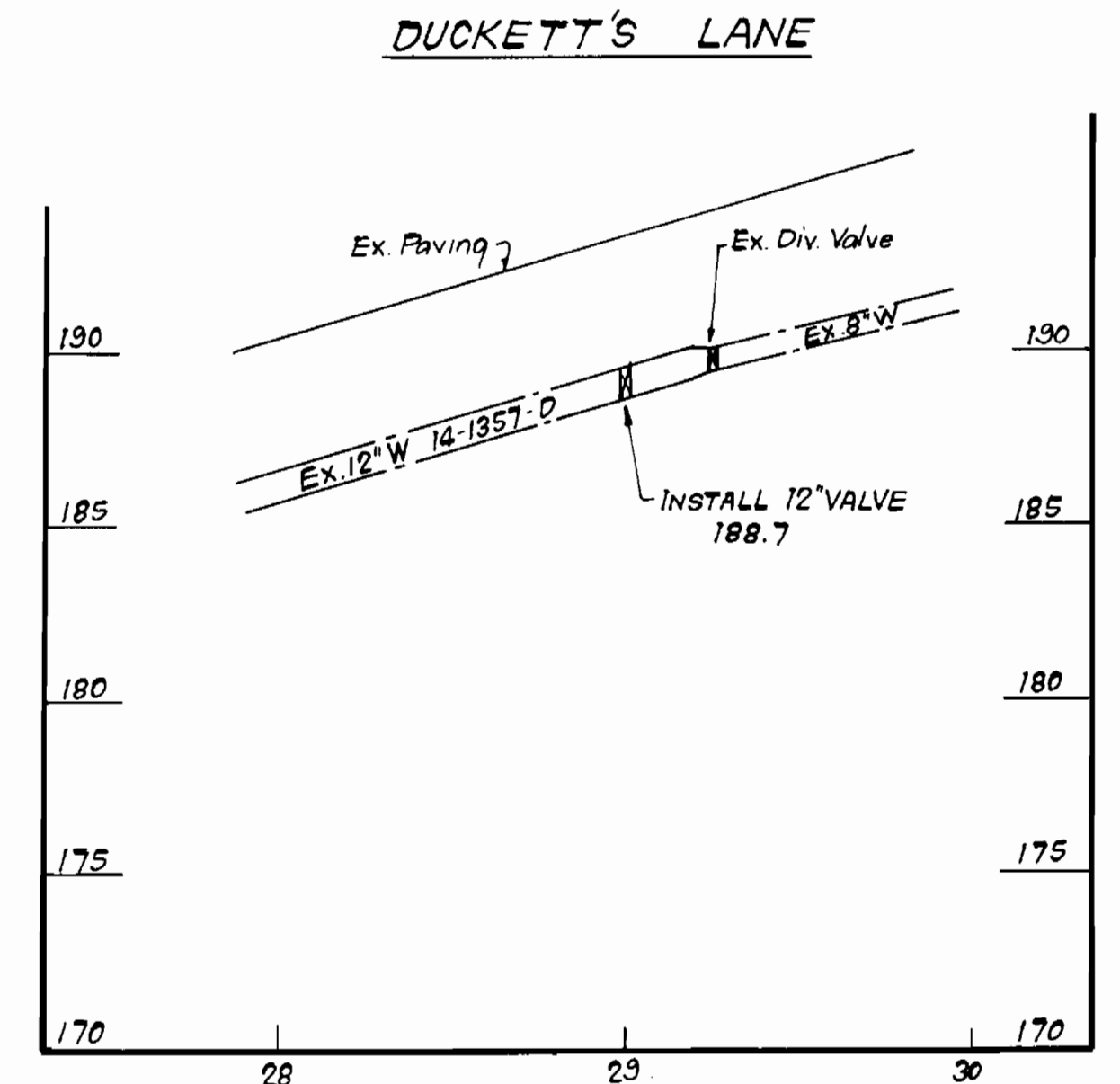
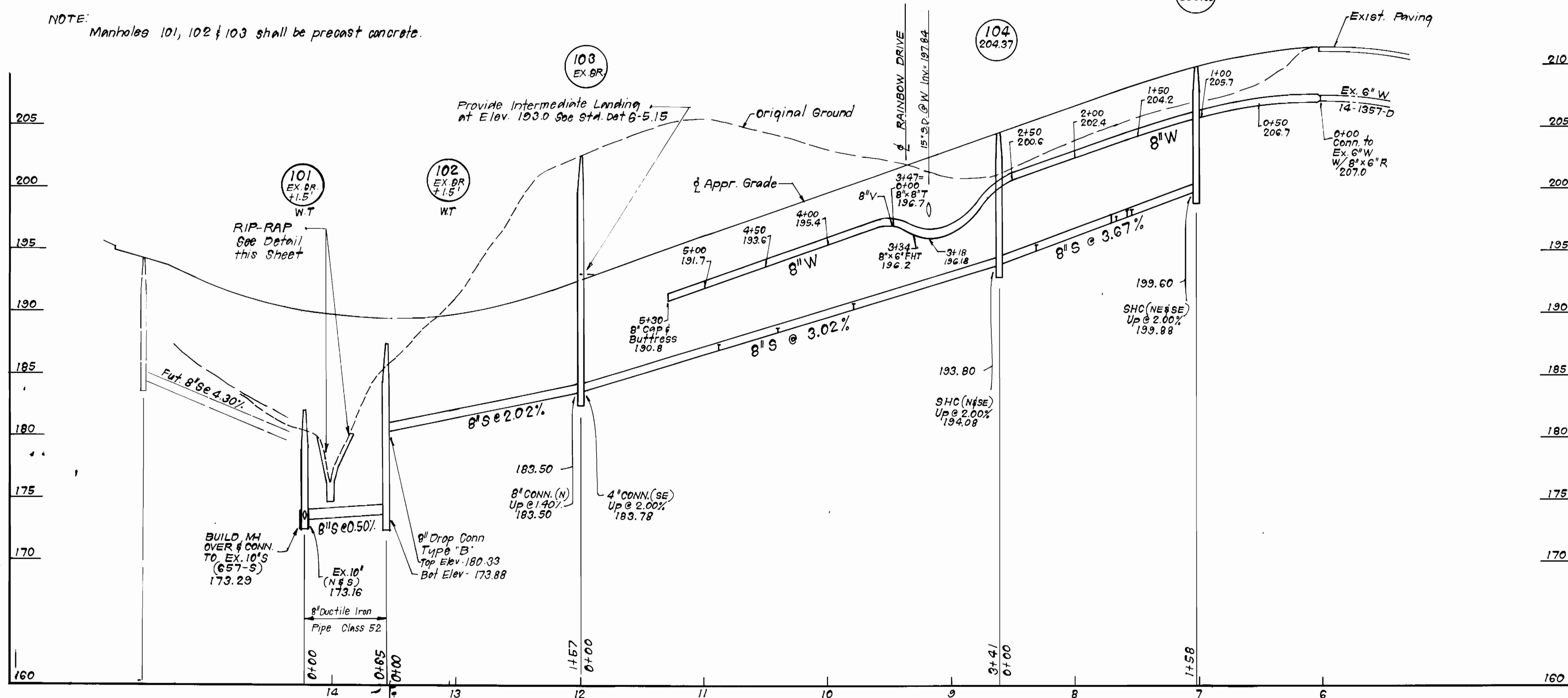


RIP-RAP DETAIL

NO SCALE

KARA'S WALK

NOTE: Manholes 101, 102 & 103 shall be precast concrete.



PROFILE SCALE
HOR. : 1" = 50'
VERT. : 1" = 5'

DEPARTMENT OF PUBLIC WORKS HOWARD COUNTY, MARYLAND DIRECTOR OF PUBLIC WORKS: [Signature] DATE: 4/2/89 CHIEF, BUREAU OF UTILITIES: [Signature] DATE: 3-21-89		CLARK-FINEFROCK & SACKETT, INC. ENGINEERS-PLANNERS-SURVEYORS 7135 MINSTREL WAY COLUMBIA MARYLAND 21045 (301) 381-7500 BALTO. (301) 621-8100 WASH.		DES: CCM DRN: CCM CHK: CCM DATE: 6-88		JTR: 1 Rev. alignment & grade of 8" S bet. MH 101 & 103 and Added Straw Bale Dike Det and Rip-Rap Det 6-21-89		PROFILES OF WATER & SEWER MAINS 600' SCALE MAP NO. 38 BLOCK NO.		MELBOURNE ESTATES SECTION ONE AREA ONE LOTS 1 THRU 13 1ST ELECTION DISTRICT CONTRACT NO. 14-1931-D SCALE AS SHOWN SHEET 3 OF 3	
--	--	--	--	--	--	---	--	---	--	--	--