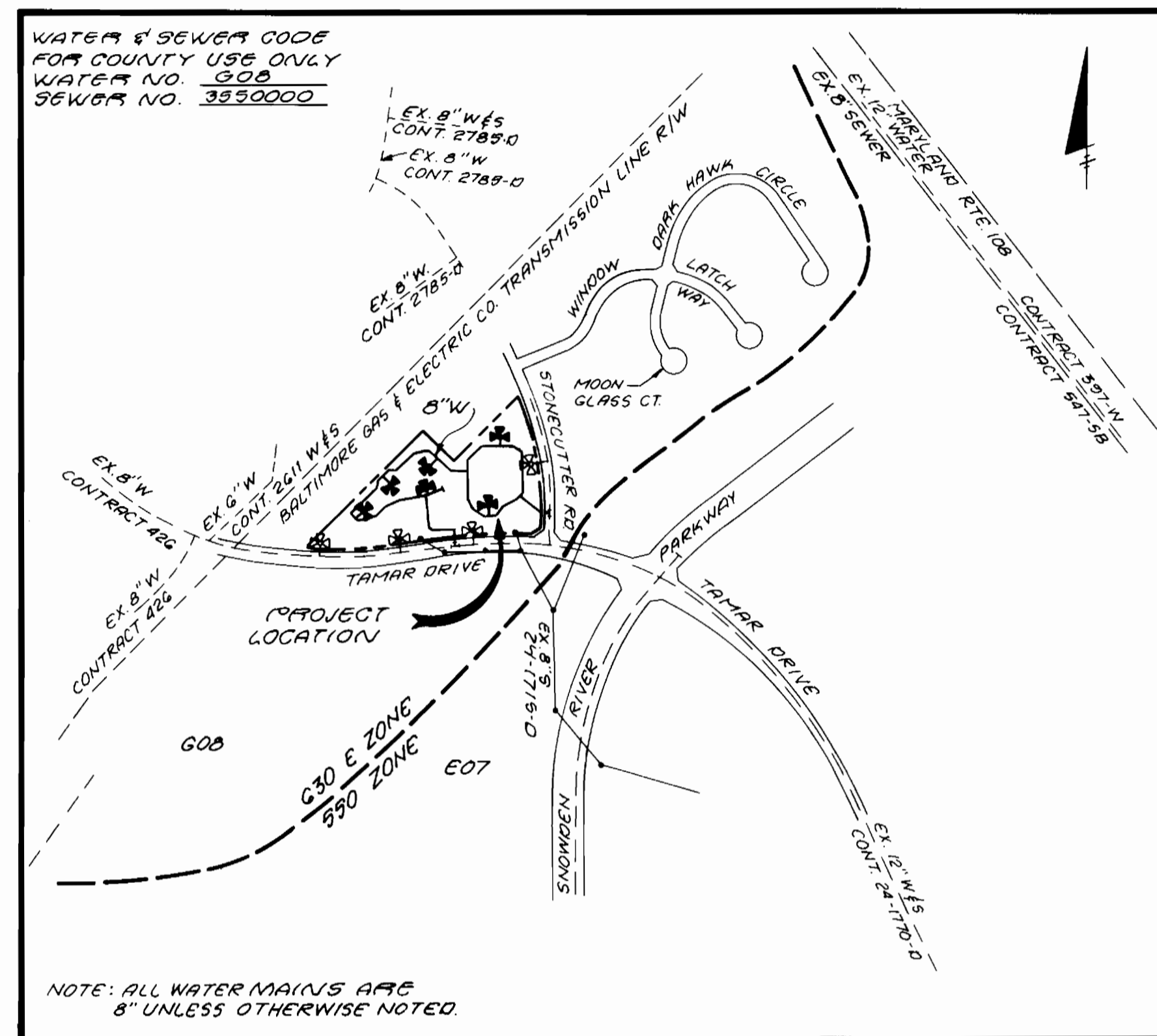


NOTE: CONTRACTOR SHALL VERIFY QUANTITIES TO HIS OWN SATISFACTION PRIOR TO BIDDING.

QUANTITIES				
ITEM	EST'D	AS BUILT	SUPPLIER	MANUFACTURER
FIRE HYDRANT	6	6	Bel Air Supply	Mueller
8"x8" TEE	3	3	Asp Water	Tyler Pipe
8"x4" TEE	12	12	Asp Water	Tyler Pipe
8"x6" TEE	6	6	" "	Tyler Pipe
8"-1/8 BENDS	12	12	" "	Tyler Pipe
8"-1/16 BENDS	25	25	" "	Tyler Pipe
8" VALVE	8	8	Bel Air Pl.	Mueller
6" VALVE	6	6	" "	Mueller
4" VALVE	12	12	" "	Mueller
8" D.I.P. WATER MAIN	2020 L.F.	2696	Asp Water	Tyler Pipe
4" D.I.P.	120 L.F.	110	Asp Water	Tyler Pipe
6" D.I.P. WATER	100 L.F.	108.2	Asp Water	Tyler Pipe
8" SAN. SEWER	14 L.F.			

SHEET INDEX	
SHEET NO.	DESCRIPTION
1	TITLE SHEET
2	WATER PLAN
3	WATER PROFILES

NO. OF UNITS - 176 D.U.  
 NO. OF SAN. HOUSE CONNECTIONS - 2  
 TYPE OF BUILDING - APARTMENTS  
 NO. OF WATER HOUSE CONNECTIONS - 12  
 DRAINAGE AREA - LITTLE PATUXENT  
 WASTE WATER DISPOSAL - SAVAGE WWTP



VICINITY MAP  
 SCALE: 1"=600'

**GENERAL NOTES**

- APPROXIMATE LOCATION OF EXISTING MAINS ARE SHOWN. THE CONTRACTOR SHALL TAKE ALL NECESSARY PRECAUTIONS TO PROTECT EXISTING MAINS AND SERVICES AND MAINTAIN UNINTERRUPTED SUPPLY. ANY DAMAGE INCURRED SHALL BE REPAIRED IMMEDIATELY TO THE SATISFACTION OF THE ENGINEER, AT THE CONTRACTOR'S EXPENSE.
- ALL HORIZONTAL CONTROLS ARE BASED ON THE MARYLAND STATE COORDINATES.
- ALL VERTICAL CONTROLS ARE BASED ON U.S.G.S. DATUM.
- ALL PIPE ELEVATIONS SHOWN ARE INVERT ELEVATIONS.
- CLEAR ALL UTILITIES BY A MINIMUM OF 6" CLEAR ALL POLES BY 2'-0" MINIMUM OR TUNNEL AS REQUIRED. ANY COST INCURRED TO THE CONTRACTOR FOR TUNNELING OR BRACING AT POLES SHALL BE INCLUDED IN UNIT PRICES BID FOR CONSTRUCTION OF THE MAIN.
- FOR DETAILS NOT SHOWN ON THE DRAWINGS USE HOWARD CO. STANDARD SPECIFICATIONS.
- FOR MATERIALS AND CONSTRUCTION METHODS USE HOWARD CO. STANDARD SPECIFICATIONS.
- CONTRACTOR SHALL LOCATE EXISTING UTILITIES OR AGENCIES AT LEAST FIVE WORKING DAYS BEFORE STARTING WORK SHOWN ON THESE PLANS.  
 STATE HIGHWAY ADMINISTRATION - 531-5533  
 BALTIMORE GAS AND ELECTRIC COMPANY - UNDERGROUND ELECTRIC - 685-0123  
 BALTIMORE GAS AND ELECTRIC COMPANY - UNDERGROUND GAS - 685-0123  
 ENGINEERING - "DAMAGE CONTROL" - 234-5621  
 "MISS UTILITY" - 1-559-0100  
 CHESAPEAKE AND POTOMAC (C & P) TELEPHONE COMPANY - 725-0976  
 AMERICAN TELEPHONE AND TELEGRAPH - CABLE LOCATION DIVISION - 393-3593  
 COLONIAL PIPELINE COMPANY - 709-1390  
 BUREAU OF UTILITIES HOWARD COUNTY - 2-2366
- TREES ARE TO BE PROTECTED FROM DAMAGE TO MAXIMUM EXTENT. TREES LOCATED WITHIN THE CONSTRUCTION STRIP ARE NOT TO BE REMOVED OR DAMAGED BY THE CONTRACTOR.
- CONTRACTOR SHALL REMOVE TREES, STUMPS AND ROOTS ALONG LINE OF EXCAVATION AS DIRECTED BY THE ENGINEER. PAYMENT FOR SUCH REMOVAL SHALL BE INCLUDED IN THE UNIT PRICE BID FOR CONSTRUCTION OF THE MAIN.
- PLACE REGULATION "MEN WORKING" AND WARNING SIGNS AS REQUIRED TO COMPLY WITH MARYLAND STATE HIGHWAY ADMINISTRATION MANUAL OF TRAFFIC CONTROL FOR HIGHWAY CONSTRUCTION AND MAINTENANCE OPERATIONS.
- ALL WATER MAINS SHALL BE D.I.P. CL 52, UNLESS OTHERWISE NOTED.
- TOP OF ALL WATER MAINS SHALL HAVE MINIMUM OF 3'-1/2' COVER UNLESS OTHERWISE NOTED.
- VALVES ADJACENT TO TEES SHALL BE STRAPPED TO TEES.
- BLOCK ALL FITTINGS WITH CONCRETE.
- BURY LINE ELEVATIONS ON FIRE HYDRANTS SHALL BE SET TO THE ELEVATIONS SHOWN ON THE DRAWINGS. ALL FIRE HYDRANTS SHALL BE STRAPPED AND BUTTRESSED WITH CONCRETE IN ACCORDANCE WITH STANDARD DETAILS. SOIL AROUND THE FIRE HYDRANT TO BE COMPACTED IN ACCORDANCE WITH SECTIONS 3701 AND 3705 OF THE STANDARD SPECIFICATIONS.
- ALL WATER HOUSE CONNECTIONS SHALL BE FOR AN INSIDE METER SETTING.
- THE CONTRACTOR SHALL NOT OPERATE ANY WATER MAIN VALVES ON THE EXISTING SYSTEM.
- ALL D.I.P. FITTINGS SHALL BE IN ACCORDANCE WITH AWWA SPECIFICATION G-153 DUCTILE IRON COMPACT FITTINGS, 3" THROUGH 12" FOR WATER AND OTHER LIQUIDS.

# CONTRACT NO. 24-1926-D ASHTON MEADOWS WATER MAIN EXTENSIONS HOWARD COUNTY, MARYLAND DEPARTMENT OF PUBLIC WORKS

PLAN REFERENCE NUMBER : SDP-89-109

SEDIMENT CONTROL MEASURES FOR THIS CONTRACT WILL BE IMPLEMENTED IN ACCORDANCE WITH SECTION 219 OF THE HOWARD COUNTY DESIGN MANUAL AND STANDARDS AND SPECIFICATIONS FOR SOIL EROSION AND SEDIMENT CONTROL IN DEVELOPING AREAS AND ALSO AS SHOWN ON THE GRADING AND SEDIMENT CONTROL PLAN SDP-89-109

REVIEWED FOR HOWARD COUNTY SOIL CONSERVATION DISTRICT AND MEETS TECHNICAL REQUIREMENTS.

*D. Helms*  
 US CONSERVATION SERVICE DATE 4/12/89

THIS DEVELOPMENT PLAN IS APPROVED FOR EROSION AND SEDIMENT CONTROL BY HOWARD SOIL CONSERVATION DISTRICT.

APPROVED:  
*Stephen L. Fisher*  
 HOWARD SOIL CONSERVATION DISTRICT DATE 4/12/89

DEPARTMENT OF PUBLIC WORKS  
 HOWARD COUNTY, MARYLAND

*Robert M. Bennett* 4-6-89  
 DIRECTOR OF PUBLIC WORKS DATE

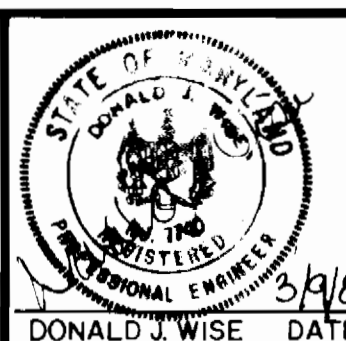
*William S. Eby* 4-13-89  
 CHIEF, BUREAU OF ENGINEERING DATE

*Donald J. Wise* 4/13/89  
 CHIEF, LAND DEVELOPMENT DIVISION DATE

STV/LYON ASSOCIATES.  
 ENGINEERS, ARCHITECTS & PLANNERS.

21 GOVERNOR'S COURT  
 BALTIMORE, MARYLAND 21207-2722  
 301-944-9112

*Donald J. Wise* 3/1/89  
 PROFESSIONAL ENGINEER DATE



DES: E.A.S.	E.A.S. 1	REVISED PER D.P.W. COMMENTS	3-7-89
DRN: E.A.S.	E.A.S. 2	REVISED PER D.P.W. COMMENTS	3-21-89
CHK: P.C.R.	W.K.C. 3	REVISED PER D.P.W. COMMENTS	6-14-89
DATE: 1-26-89	BY NO.	REVISION	DATE

TITLE SHEET

ASHTON MEADOW  
 VILLAGE OF LONGREACH  
 SECTION 3, AREA 2, PARCEL A

TAX MAP 36 B 37  
 SIXTH ELECTION DISTRICT

HOWARD COUNTY, MARYLAND  
 DATE: 1-26-89

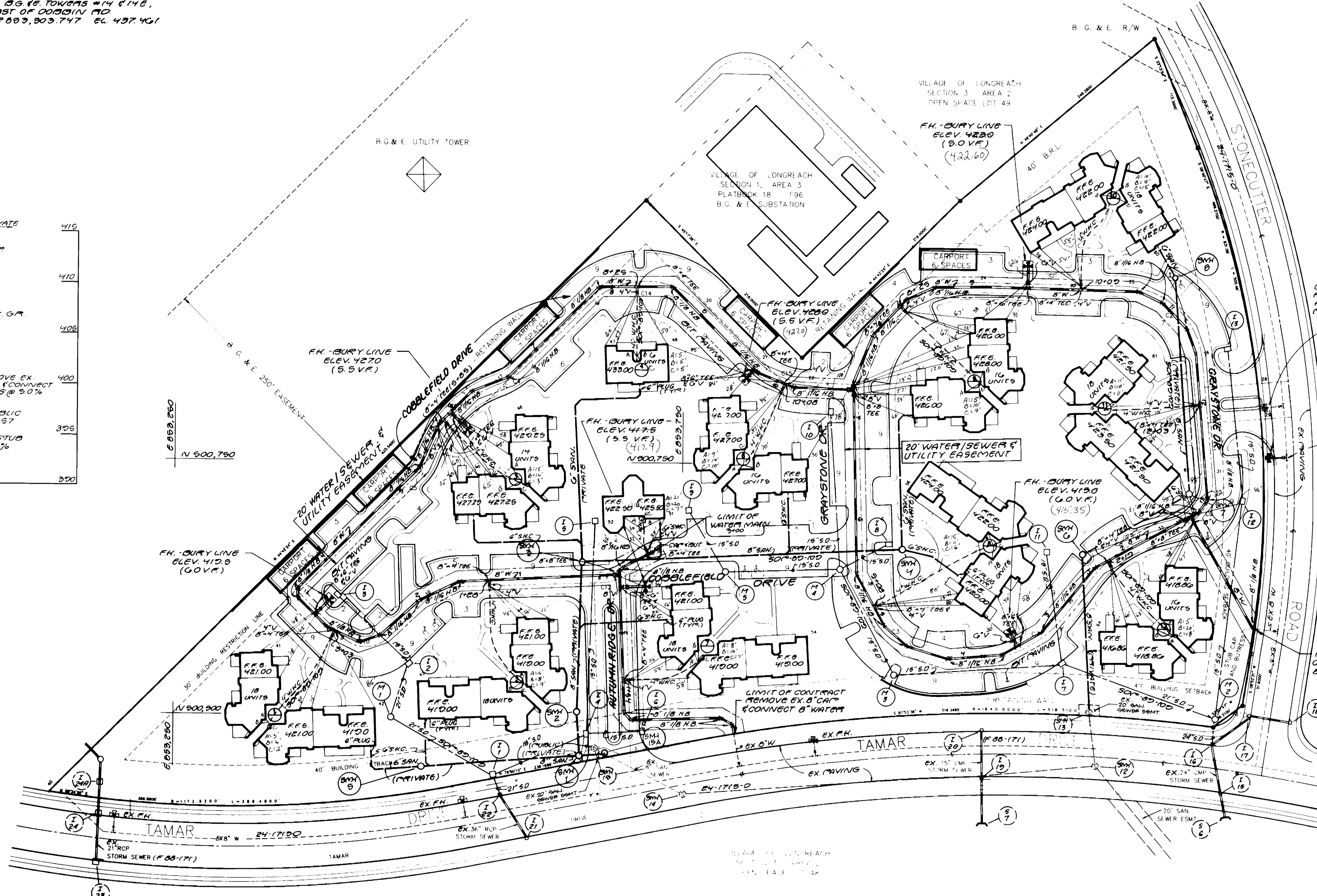
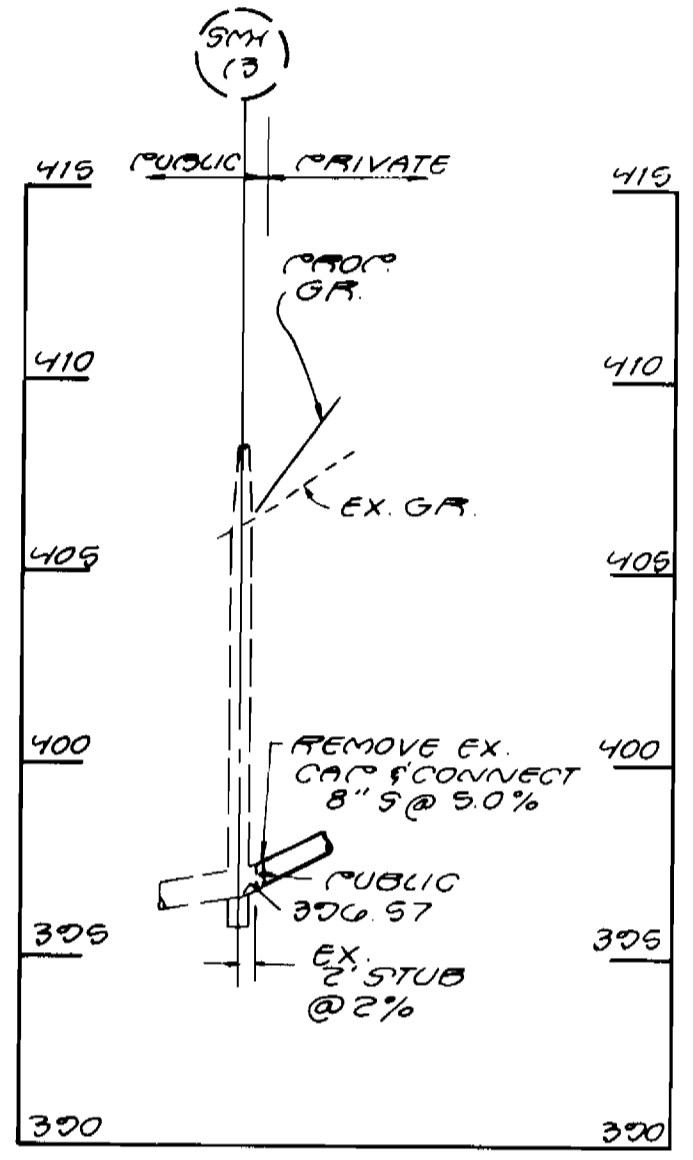
SCALE AS SHOWN  
 SHEET 1 of 3

AS-BUILT 1/19/90

**BENCHMARKS**

HOWARD COUNTY MONUMENT # 2542001 LOCATED 100 FT. ± SOUTHWEST OF B.G. #5 TOWERS #16 & 16B, 1060 FT. ± SOUTHWEST OF 0000 IN MD. N 499,899.293 E 692,111.256 CL 420.071

HOWARD COUNTY MONUMENT # 2643004 LOCATED 55 FT. ± BETWEEN B.G. #5 TOWERS #14 & 14B, 702 FT. ± NORTHEAST OF 0000 IN MD. N 500,204.483 E 689,903.747 CL 437.461



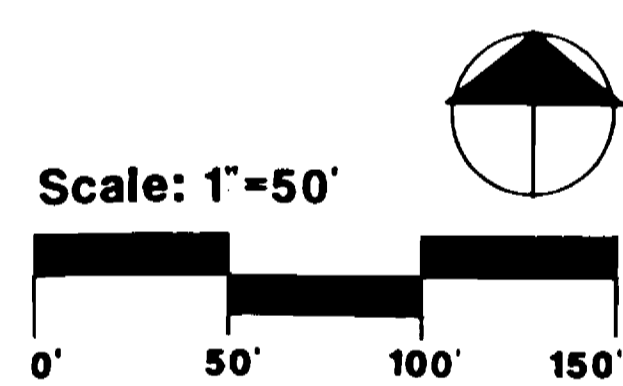
CAP EX. C LINE @ TEE, RELOCATE EX. EX. & ABANDON EX. C LINE PER HOWARD CO. SPECS.

RELOCATE EX. FIRE HYDRANT

DEVELOPER/OWNER: SUMMIT PROPERTIES 203 FRANCIS SCOTT KEY HIGHWAY BALTIMORE, MARYLAND 21230 (301) 234-0070

PRESENT OWNER: HOWARD RESEARCH AND DEVELOPMENT LAND COMPANY THE ROUSE COMPANY BUILDING COLUMBIA, MARYLAND 21044 (301) 992-6000

ENGINEER: STV/LYON ASSOCIATES 21 GOVERNOR'S COURT BALTIMORE, MARYLAND 21207 (301) 944-9112



DATE: \_\_\_\_\_

PROJECT NO: \_\_\_\_\_

REVISIONS: 0-19-89 REVISED SAN. PER FIELD LOCATION & D.P.W. COMMENTS

VILLAGE OF LONG REACH SECTION 3, AREA 2, PARCEL A

1701 East Boulevard Charlotte NC 28203 704/333-0325  
 1216 Prince Street Alexandria VA 22314 703/549-7784  
 225 Hillsborough Street Raleigh NC 919/834-6127

**Land Design**  
 Landscape Architecture Land Planning Urban Design

DEPARTMENT OF PUBLIC WORKS  
 HOWARD COUNTY, MARYLAND

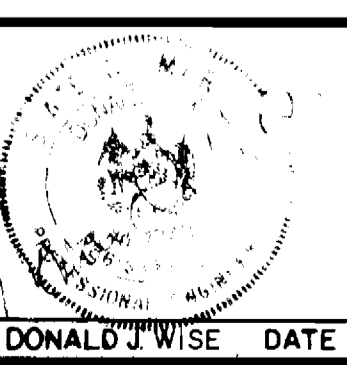
DIRECTOR OF PUBLIC WORKS DATE: 4-13-89  
 CHIEF, BUREAU OF ENGINEERING DATE: \_\_\_\_\_

CHIEF, BUREAU OF UTILITIES DATE: 4-6-89  
 CHIEF, LAND DEVELOPMENT DIVISION DATE: \_\_\_\_\_

**STV/LYON ASSOCIATES.**  
 ENGINEERS, ARCHITECTS & PLANNERS.

21 GOVERNOR'S COURT  
 BALTIMORE, MARYLAND 21207-2722  
 301-944-9112

DONALD J WISE DATE: \_\_\_\_\_



DES: EAS	E.A.S.	1	REVISED PER D.P.W. COMMENTS	3-7-89
DRN: EAS	W.K.C.	3	REVISED PER D.P.W. COMMENTS	6-14-89
CHK: PCR				
DATE: 1-26-89	BY: NO.		REVISION	DATE

**WATER PLAN**

ASHTON MEADOW  
 VILLAGE OF LONGREACH  
 SECTION 3, AREA 2, PARCEL A

TAX MAP 36 B 37  
 SIXTH ELECTION DISTRICT

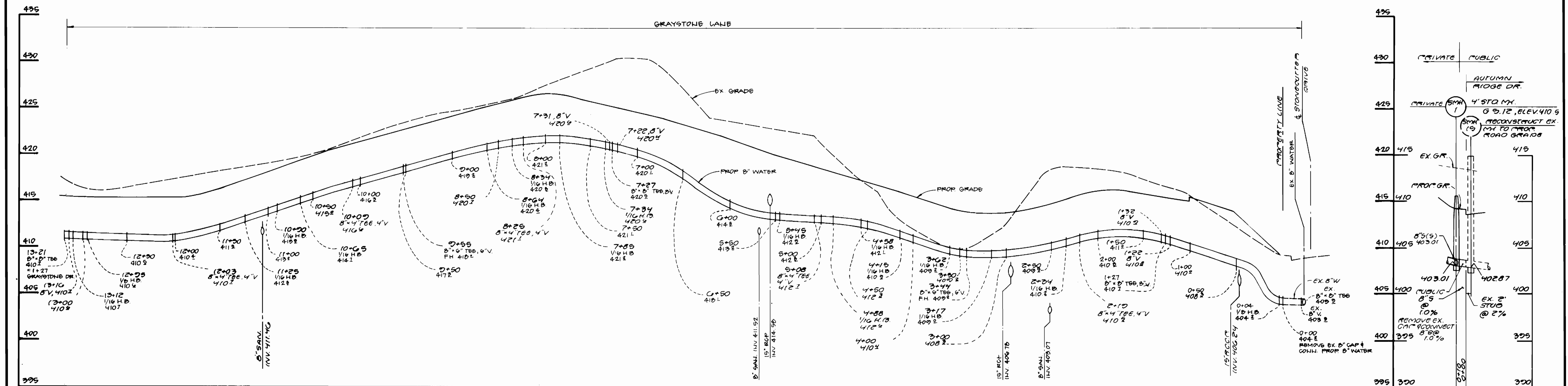
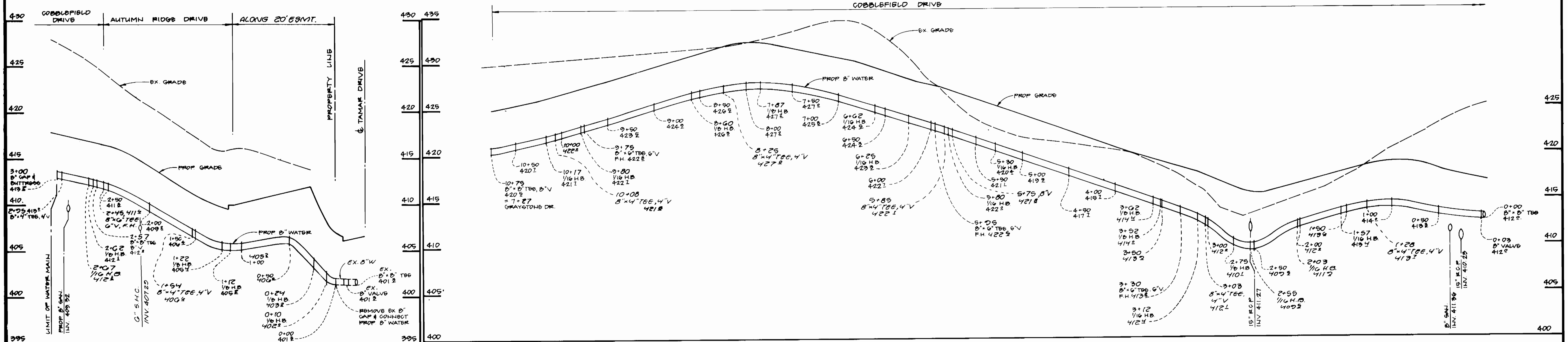
HOWARD COUNTY, MARYLAND  
 DATE: 1-26-89

SCALE AS SHOWN  
 SHEET 2 of 3

# ASHTON MEADOW

Village of Longreach Section 3 Area 2  
Sixth Election District  
Howard County, Maryland

An Apartment Community by Summit Properties  
203 Francis Scott Key Highway Baltimore, Maryland 21230 (301) 234-0700



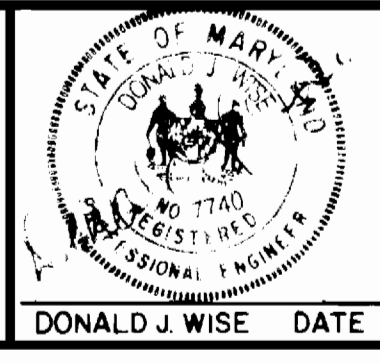
PROFILES  
SCALE: 1" = 50' HOR.  
1" = 5' VERT.

DEPARTMENT OF PUBLIC WORKS  
HOWARD COUNTY, MARYLAND

Director of Public Works: *[Signature]* DATE: 4-6-89  
Chief, Bureau of Engineering: *[Signature]* DATE: 4/13/89  
Chief, Bureau of Utilities: *[Signature]* DATE: 4/13/89  
Chief, Land Development Division: *[Signature]* DATE: 4/13/89

STV/LYON ASSOCIATES.  
ENGINEERS, ARCHITECTS & PLANNERS.

21 GOVERNOR'S COURT  
BALTIMORE, MARYLAND 21207-2722  
301 944-9172



DES. E.A.S.	NO.	REVISION	DATE
E.A.S.	1	REVISED PER D.P.W. COMMENTS	3-7-89
E.A.S.	2	REVISED PER D.P.W. COMMENTS	3-21-89
DRN. E.A.S.	WKC 3	REVISED PER D.P.W. COMMENTS	6-14-89
CHK. P.C.R.	RES		
DATE	1-26-89		
BY	NO.	REVISION	DATE

## WATER & SEWER PROFILES

ASHTON MEADOW  
VILLAGE OF LONGREACH  
SECTION 3, AREA 2, PARCEL A

TAX MAP 36 & 37  
SIXTH ELECTION DISTRICT

HOWARD COUNTY, MARYLAND  
DATE: 1-26-89

SCALE AS SHOWN  
SHEET 3 of 3