

QUANTITIES				
ITEM	UNIT	ESTIMATE	AS-BUILT	SUPPLIER
5" SEWER	L.F.	259		
MANHOLE	V.F.	15		
4" SEWER HC	L.F.	10		

**BENCH MARKS**

BENCH MARK NO. 1  
R.R. Spike set in Southeast side of CIP Pole # 56  
(B.G. & E. Pole # 379245) Elev. 460.73

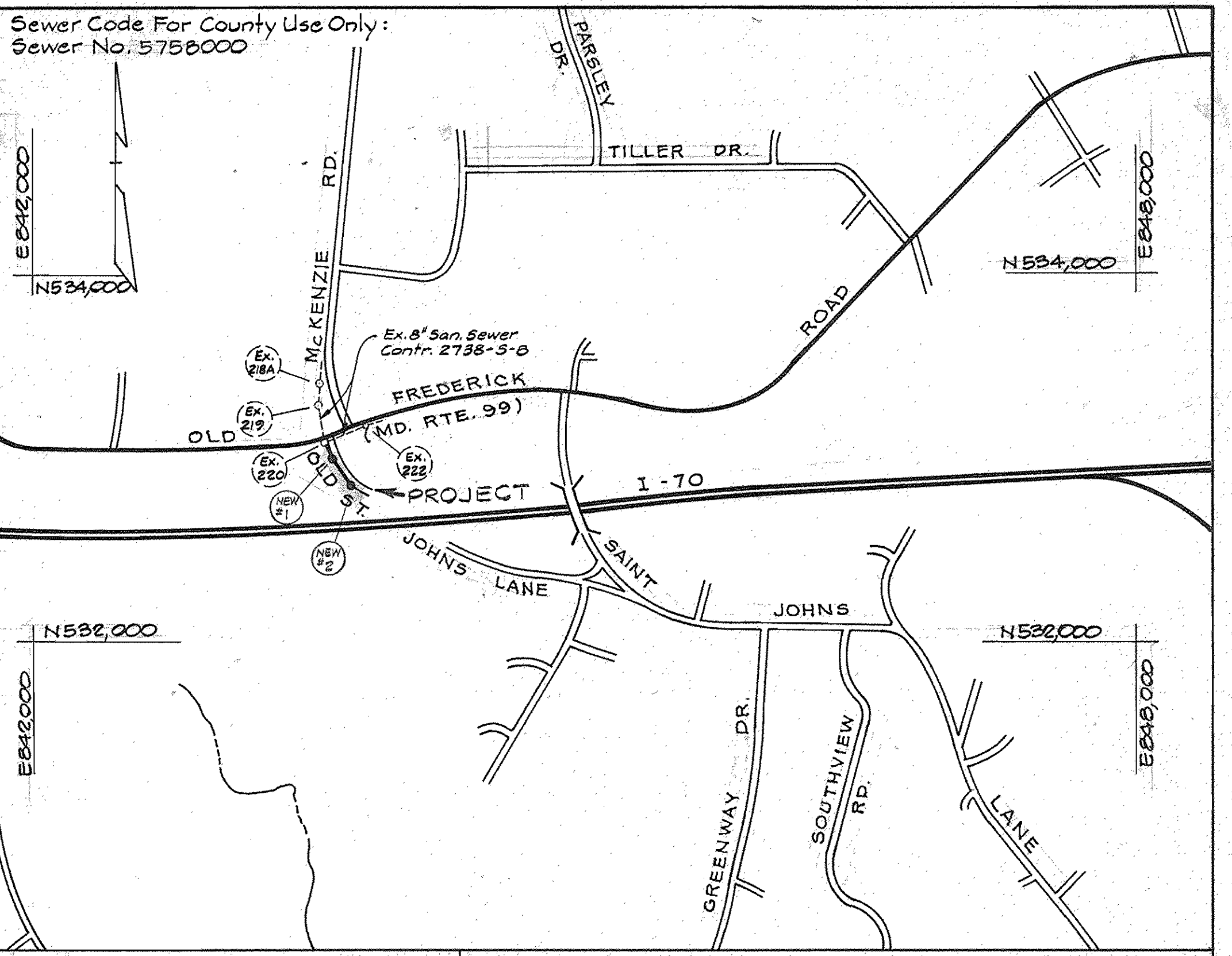
BENCH MARK NO. 2  
R.R. Spike set in Northeast side of CIP Pole # 160  
(B.G. & E. Pole # 486797) Elev. 456.67

**TRAVERSE INFO**

Ho. Co. #3441002 = N 532,747.783  
E 844,923.568  
N 80°44'43" W 954.81'

H.E.C. Trav. P.I. #10-04 = N 532,901.337  
E 843,987.188  
N 58°30'37" W 484.41'

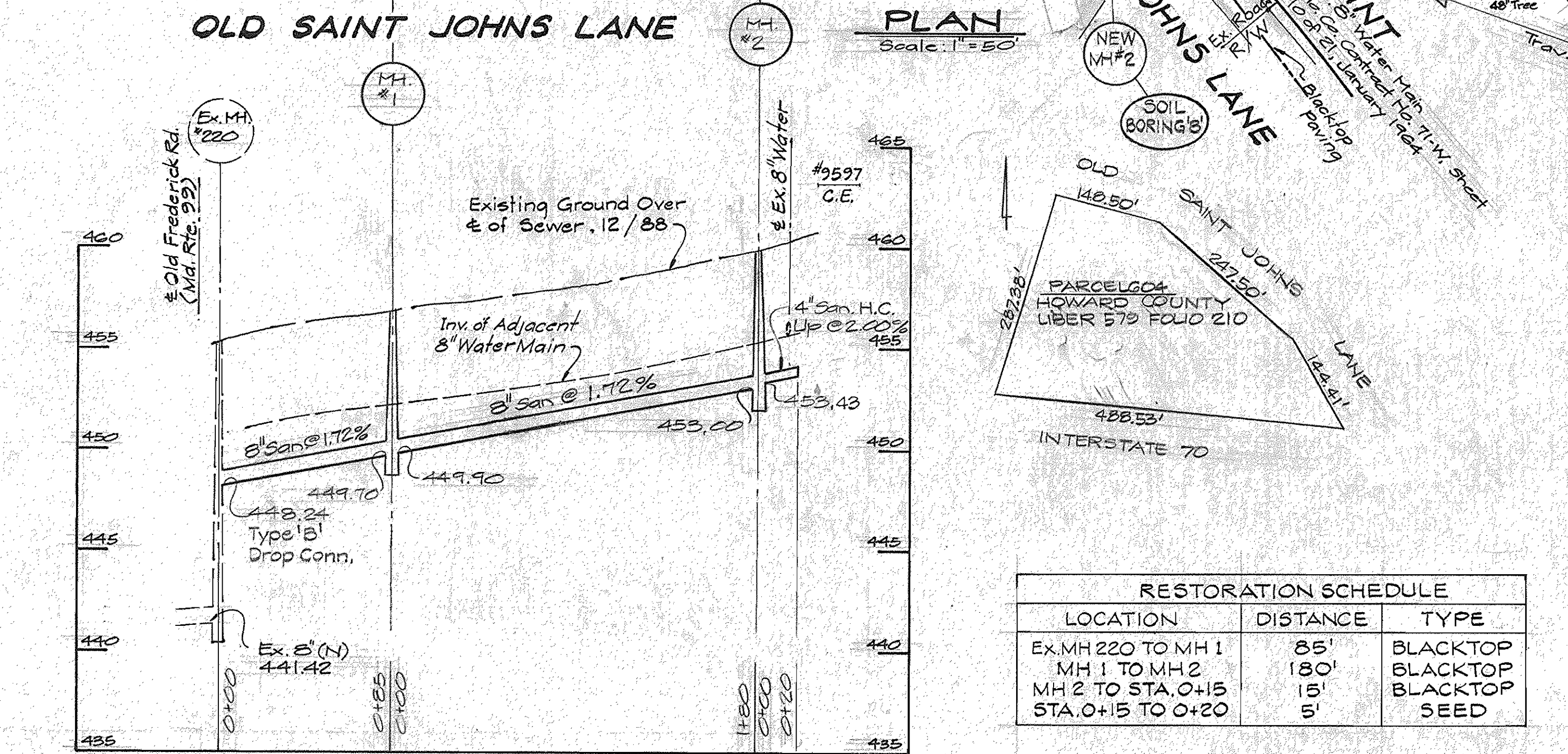
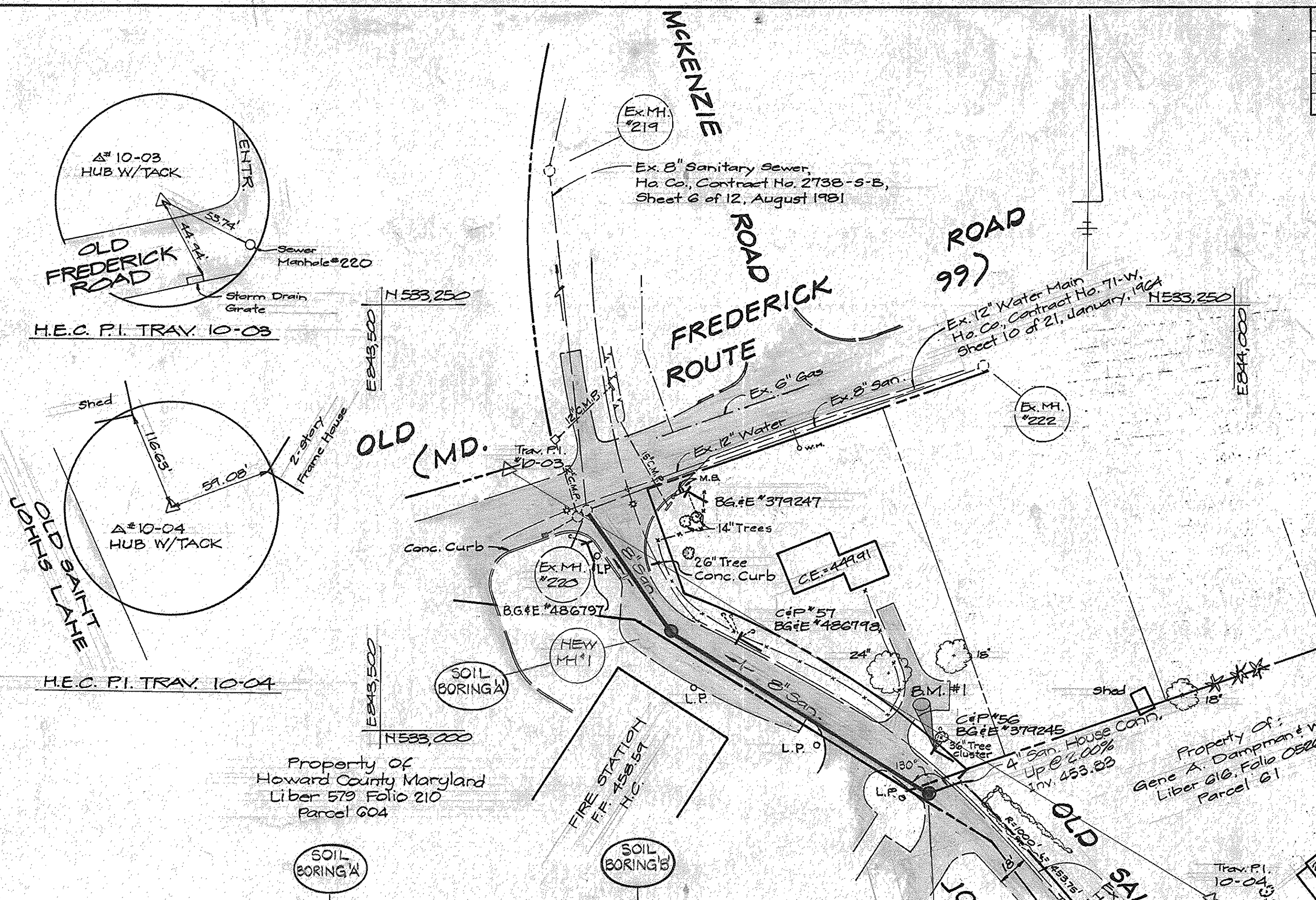
H.E.C. Trav. P.I. #10-03 = N 533,154.368  
E 843,574.112



**VICINITY MAP**  
Scale: 1" = 600'

NUMBER OF LOTS = 1  
TYPE OF BUILDING = RESIDENTIAL  
NUMBER OF S.H.C. = 1  
DRAINAGE AREA: PATAPSCO

- GENERAL NOTES**
- Approximate Location of existing Mains are shown. The Contractor shall take all necessary precautions to protect existing mains and services and maintain uninterrupted supply. Any damage incurred shall be repaired immediately to the satisfaction of the Engineer at the Contractor's expense.
  - All Horizontal Controls are based on Maryland State Coordinates.
  - All Vertical Controls are based on U.S.G.S Datum.
  - All pipe Elevations shown are invert Elevations.
  - Clear all utilities by a minimum of 6" Clear all poles by 2'-0" minimum or tunnel as required.
  - For Details Not Shown On The Drawings, And For Materials And Construction Methods, Use Howard County Design Manual, Volume IV, Standard Specifications And Details For Construction. The Contractor Shall Have a Copy Of Volume IV On The Job.
  - Where Test Pits Have Been Made On Existing Utilities, They Are Noted By The Symbol At The Location Of The Test Pit. A Note Or Notes Containing The Results Of The Test Pit Or Pits Is Included On The Drawings. Existing Utilities In The Vicinity Of The Proposed Work For Which Tests Have Not Been Dug Shall Be Located By The Contractor Two Weeks In Advance Of Construction Operations At The Owners Expense.
  - Contractor shall notify the following Utilities Companies or Agencies at least five working days before starting work shown on these plans.
    - C&P Telephone Company ..... 1-800-257-7777
    - State Highway Administration ..... 531-5533
    - Baltimore Gas & Electric Co. Contractor Services ..... 650-4620
    - Baltimore Gas & Electric Co. Underground Damage Control ... 650-9004
    - Baltimore Gas & Electric Co. Trouble Shooting ..... 296-3001
    - Miss Utility ..... 1-800-257-7777
    - Colonial Pipeline Co. .... 793-1300
    - Bureau of Utilities, Howard County Dept. of Public Works... 992-2366
  - Trees and shrubs are to be protected from damage to maximum extent. Trees and shrubs located within the construction strip are not to be removed or damaged by the contractor.
  - Contractor shall remove trees, stumps and roots along line of excavation. Payment for such removal shall be included in the unit price for construction of the main.
  - All sewer mains shall be CSPX, R.CSP, V.G.P.X., or P.V.C. unless otherwise noted.
  - The contractor shall provide a joint in all sewer mains within 2'-0" of exterior manhole wall.
  - All manholes shall be 4'-0" inside diameter unless otherwise noted.



**RESTORATION SCHEDULE**

LOCATION	DISTANCE	TYPE
Ex. MH 220 TO MH 1	85'	BLACKTOP
MH 1 TO MH 2	180'	BLACKTOP
MH 2 TO STA. 0+15	15'	BLACKTOP
STA. 0+15 TO 0+20	5'	SEED

**NOTE:**  
Sediment Control is predicated on daily backfilling of sewer main and immediate stabilization of disturbed areas.

DAILY BACKFILL SEDIMENT CONTROL MEASURES FOR THIS CONTRACT WILL BE IMPLEMENTED IN ACCORDANCE WITH SECTION 219 OF THE STANDARD SPECIFICATION

REVIEWED FOR HOWARD SOIL CONSERVATION DISTRICT AND MEETS TECHNICAL REQUIREMENT.

U.S. SOIL CONSERVATION SERVICE

This Construction Plan is approved for Soil Erosion and Sediment Control by the Howard Soil Conservation District.

APPROVED: \_\_\_\_\_

HOWARD S.C.D. DATE \_\_\_\_\_

**MANHOLE STAKEOUT TABLE**

MANHOLE	DISTANCE	OFFSET
1	182' West of Trav. P.I. #10-03	31' South
2	310' West of Trav. P.I. #10-03	34' South

DEPARTMENT OF PUBLIC WORKS  
HOWARD COUNTY, MARYLAND

DIRECTOR OF PUBLIC WORKS DATE \_\_\_\_\_

CHIEF, BUREAU OF UTILITIES DATE 4-21-89

CHIEF, BUREAU OF ENGINEERING DATE \_\_\_\_\_

CHIEF, UTILITY DESIGN DIVISION DATE 1-6-89

HICKS ENGINEERING CO. INC.  
ENGINEERS - SURVEYORS - PLANNERS  
200 E. JOPPA ROAD - SUITE 402  
TOWSON MARYLAND 21204

DES: T.A.W.  
DRN: L.A.W.  
CHK: D.E.H.  
DATE: \_\_\_\_\_

BY	NO.	REVISION	DATE

8" SANITARY SEWER  
CONTRACT NO. 20-1909

OLD ST. JOHNS LANE SEWER EXTENSION  
SECOND ELECTION DISTRICT  
HOWARD COUNTY, MARYLAND  
CAPITAL PROJECT S-6689

SCALE AS SHOWN  
SHEET 1 OF 1