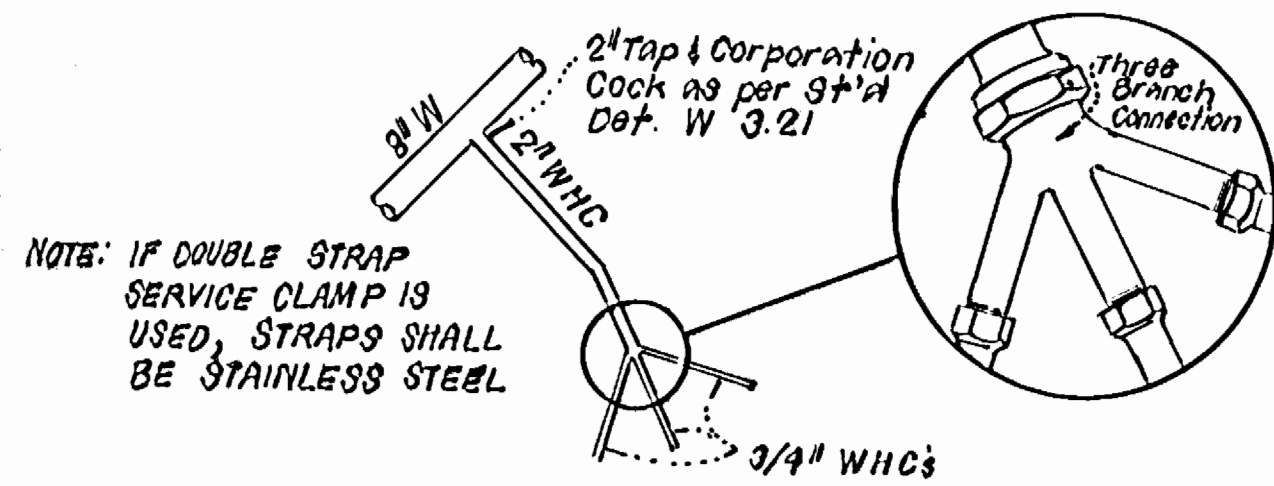


SEWER HOUSE CONNECTION TABLE

LOTS	Inv@ R	Min. C	LOTS	Inv@ R	Min. C
1/2	246.8	230.1	20/21	263.0	260.3
3/4	248.8	232.1	22/23	262.6	263.9
5/6	250.7	234.0	24/25	262.3	265.6
7/8	252.8	236.1	26/27	261.1	264.4
9/10	253.4	237.7	28/29	259.4	262.7
11/12	260.1	243.4	30	252.7	256.0
13/14	260.6	243.0	31/32	250.8	254.1
15/16	261.3	244.6	33/34	248.7	252.0
17	261.0	244.3	35/36	246.8	250.1
18/19	261.5	244.8			

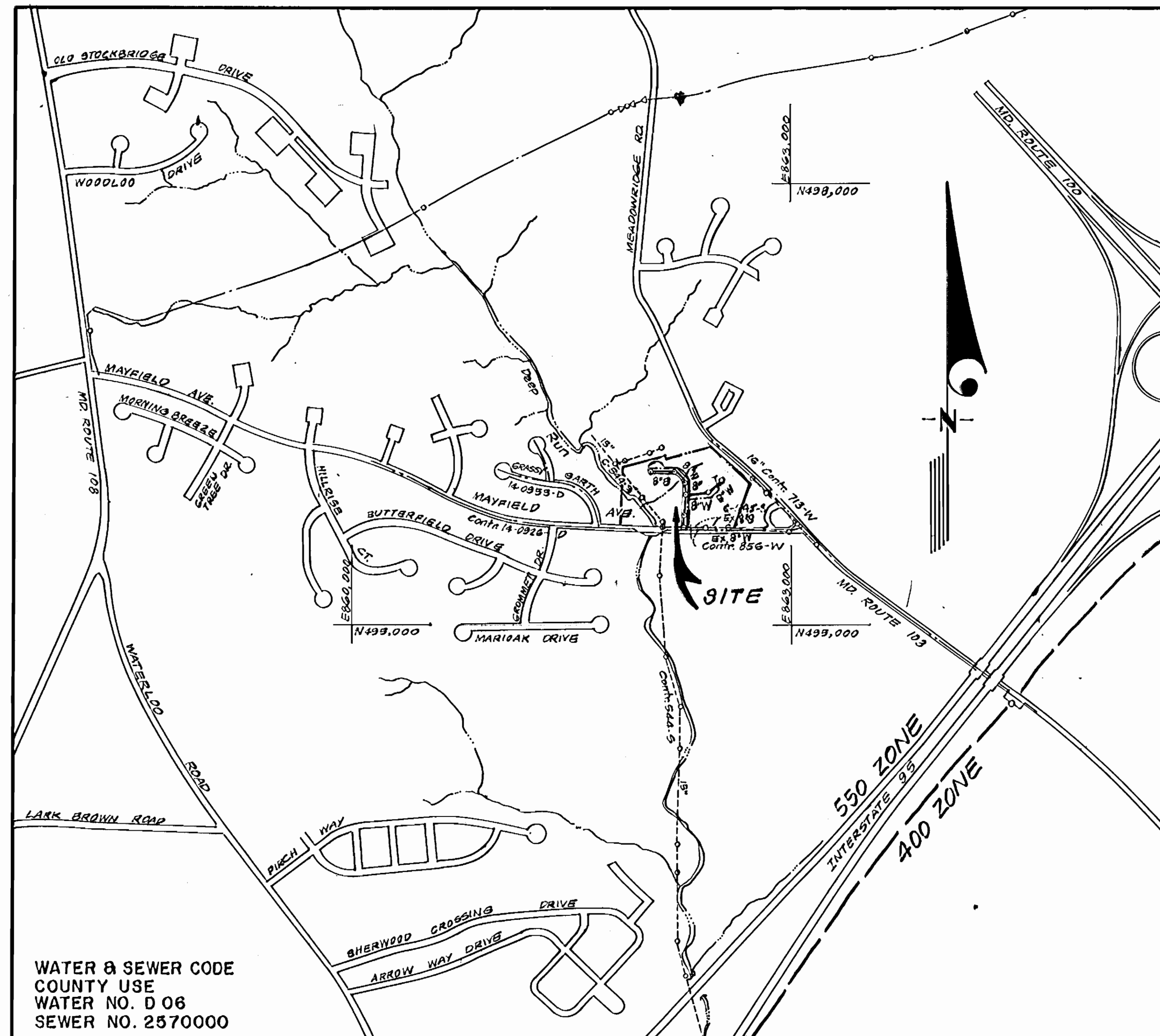
Lot	Notes
1	12.5' WHC TO SHC
2	4' SHC TO 12.5' WHC LOT 2 TO WHC
3	12.5' WHC TO 12.5' WHC LOT 3 TO WHC
4	12.5' WHC TO 12.5' WHC LOT 4 TO WHC
5	12.5' WHC TO 12.5' WHC LOT 5 TO WHC
6	12.5' WHC TO 12.5' WHC LOT 6 TO WHC
7	12.5' WHC TO 12.5' WHC LOT 7 TO WHC
8	12.5' WHC TO 12.5' WHC LOT 8 TO WHC
9	12.5' WHC TO 12.5' WHC LOT 9 TO WHC
10	12.5' WHC TO 12.5' WHC LOT 10 TO WHC
11	12.5' WHC TO 12.5' WHC LOT 11 TO WHC
12	12.5' WHC TO 12.5' WHC LOT 12 TO WHC
13	12.5' WHC TO 12.5' WHC LOT 13 TO WHC
14	12.5' WHC TO 12.5' WHC LOT 14 TO WHC
15	12.5' WHC TO 12.5' WHC LOT 15 TO WHC
16	12.5' WHC TO 12.5' WHC LOT 16 TO WHC
17	12.5' WHC TO 12.5' WHC LOT 17 TO WHC
18	12.5' WHC TO 12.5' WHC LOT 18 TO WHC
19	12.5' WHC TO 12.5' WHC LOT 19 TO WHC
20	12.5' WHC TO 12.5' WHC LOT 20 TO WHC
21	12.5' WHC TO 12.5' WHC LOT 21 TO WHC
22	12.5' WHC TO 12.5' WHC LOT 22 TO WHC
23	12.5' WHC TO 12.5' WHC LOT 23 TO WHC
24	12.5' WHC TO 12.5' WHC LOT 24 TO WHC
25	12.5' WHC TO 12.5' WHC LOT 25 TO WHC
26	12.5' WHC TO 12.5' WHC LOT 26 TO WHC
27	12.5' WHC TO 12.5' WHC LOT 27 TO WHC
28	12.5' WHC TO 12.5' WHC LOT 28 TO WHC
29	12.5' WHC TO 12.5' WHC LOT 29 TO WHC
30	12.5' WHC TO 12.5' WHC LOT 30 TO WHC

NOTE: SEE DIMENSIONS ON PLAN SHEET FOR MORE INFORMATION.



3-WAY WHC DETAIL

LOTS 14, 15 AND 16
NO SCALE



VICINITY MAP
SCALE: 1" = 600'

TYPE OF BUILDING	Townhouses
NO. OF LOTS	36
NO. OF WHC's	36
NO. OF SHC's	36
DRAINAGE AREA	Patapasco W.T.P.

GENERAL NOTES

- Approximate location of existing mains are shown. The contractor shall take all necessary precautions to protect existing mains and services and maintain uninterrupted supply. Any damage incurred shall be repaired immediately to the satisfaction of the Inspector, at the contractor's expense.
- All horizontal controls are based on Maryland State Coordinates.
- All vertical controls are based on U.S.G.S. Datum.
- All pipe elevations shown are invert elevations.
- Clear all utilities by a minimum of 6" clear all poles by 2'-0" minimum or tunnel as required. Any cost incurred to the contractor for tunneling or bracing at poles shall be included in unit prices bid for excavation and backfill.
- For details not shown on the drawings use Howard County Standard Details.
- For materials and construction methods use Howard County Standard Specifications and Howard County Design Manual, Volume IV. The Contractor shall have Volume IV on the job.
- Contractor shall locate existing utilities a minimum of two (2) weeks in advance of construction operations in the vicinity of proposed utilities at his own expense.
- Contractor shall notify the following utilities or agencies at least five (5) working days before starting work shown on these plans.
 - State Highway Administration - 531-5533
 - Baltimore Gas & Electric Company - Underground Damage Control - 859-9004
 - Baltimore Gas & Electric Company - Contractor Services - 850-4620
 - Baltimore Gas & Electric Company - Trouble Shooting - 298-9001
 - "Miss Utility" - 1-800-257-7777
 - Chesapeake & Potomac (C & P) Telephone Company - 1-800-257-7777
 - Bureau of Utilities Howard County - 992-2368
 - Colonial Pipeline Company - 796-1390
- Trees are to be protected from damage to maximum extent. Trees located within the construction strip are not to be removed or damaged by the contractor.
- Contractor shall remove trees, stumps, and roots along line of excavation as directed by the Inspector. Payment for such removal shall be included in the unit price bid for excavation and backfill.
- Place regulation "Man Working" and warning signs as required to comply with Maryland State Highway Administration Manual of Traffic Control for Highway Construction and Maintenance Operations.
- All water mains to be D.I.R. Class 52 unless otherwise noted.
- Top of all water mains to have a minimum of 3'-1/2' cover unless otherwise noted.
- Valves adjacent to tees shall be strapped to tees.
- Block all fittings with concrete.
- Bury line elevations on fire hydrants shall be set to the elevations shown on the drawings. All fire hydrants shall be strapped and buttressed with concrete in accordance with standard details. Soil around the fire hydrant to be compacted in accordance with Sections 1003 & 1008 of the Standard Specifications.
- All water house connections shall be for an inside meter setting.
- The contractor shall not operate any water main valves on the existing system.
- All sewer mains shall be C.S.P.X., V.C.P.X., P.V.C., or A.C.P. Class 2400 unless otherwise noted.
- The contractor shall provide a joint in all sewer mains within 2'-0" of exterior manhole wall.
- All manholes shall be 4'-0" inside diameter, unless otherwise noted.
- Water main and water house connection lines must have a minimum of one foot separation from the sanitary sewer and sewer house connections as they cross. Except at crossings, water and sewer lines shall have a minimum horizontal separation of 10'.
- Manholes designated thus: WT, shall have a Watertight Frame and Cover.
- All D.I.R. fittings shall be in accordance with AWWA specification C-193 Ductile Iron Compact Fittings, 3-inch through 12-inch for water and other liquids.

Sediment Control Measures will be implemented in accordance with Section 219 of the Specifications & with Road Construction Plan # 89-84; Drawing, Sediment & Erosion Control.

REVIEWED FOR HOWARD SOIL CONSERVATION DISTRICT AND MEETS TECHNICAL REQUIREMENT

SIGNATURE: *James M. Nelson* DATE: 4/3/89

U.S. SOIL CONSERVATION SERVICE

This Development Plan is approved for Soil Erosion and Sediment Control by the Howard Soil Conservation District.

APPROVED: *Stephen L. ...* DATE: 4/3/89
Howard S.C.D.

CONTRACT NO. 14-1904-D

MEADOWLAND

LOTS 1 THRU 40

HOWARD COUNTY, MARYLAND
DEPARTMENT OF PUBLIC WORKS

QUANTITIES			
ITEM	EST'D	AS BUILT	MATERIAL / SUPPLIER
6" W	246 LF	231 LF	ATLANTIC STATES CAST IRON / AAA WATER WORKS
8" W	582 LF	551 LF	ATLANTIC STATES CAST IRON "
8" S	777 LF	769 LF	PSPI NATIONAL PIPE / AAA WATER WORKS INC
6" SHC	724 LF	730 LF	" " " " " " " "
1" WHC	300 LF	320 LF	SOFT K COPPER G / AAA WATER WORKS INC.
3/4" WHC	600 LF	549 LF	" " " " " " " "
F.H.	3 EA.	3	MULLER CO. / AAA WATER WORKS
40" DIA. MH	8 EA.	8	ATLANTIC CONCRETE PRODUCTS / ATLANTIC CO. PRODUCTS
8" V	2 EA.	2	U.S. PIPE FOUNDRY / AAA WATER WORKS
8"x8" T.S. & V.	1 EA.	1	" " " " " " " "

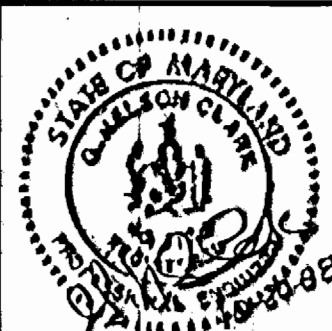
DEPARTMENT OF PUBLIC WORKS
HOWARD COUNTY, MARYLAND

4/15/89
DATE

3-30-89
DATE

CLARK • FINEPROCK & SACKETT, INC.
ENGINEERS • PLANNERS • SURVEYORS

7135 WINSTREL WAY COLUMBIA MARYLAND 21045
(301) 381-7500 BALTO. (301) 821-8100 WASH.



DES: JTR					
DRN: VLM					
CHK: JTR					
DATE: 10-88	BY	NO.	REVISION	DATE	600' SCALE MAP NO. 37 BLOCK NO.

TITLE SHEET

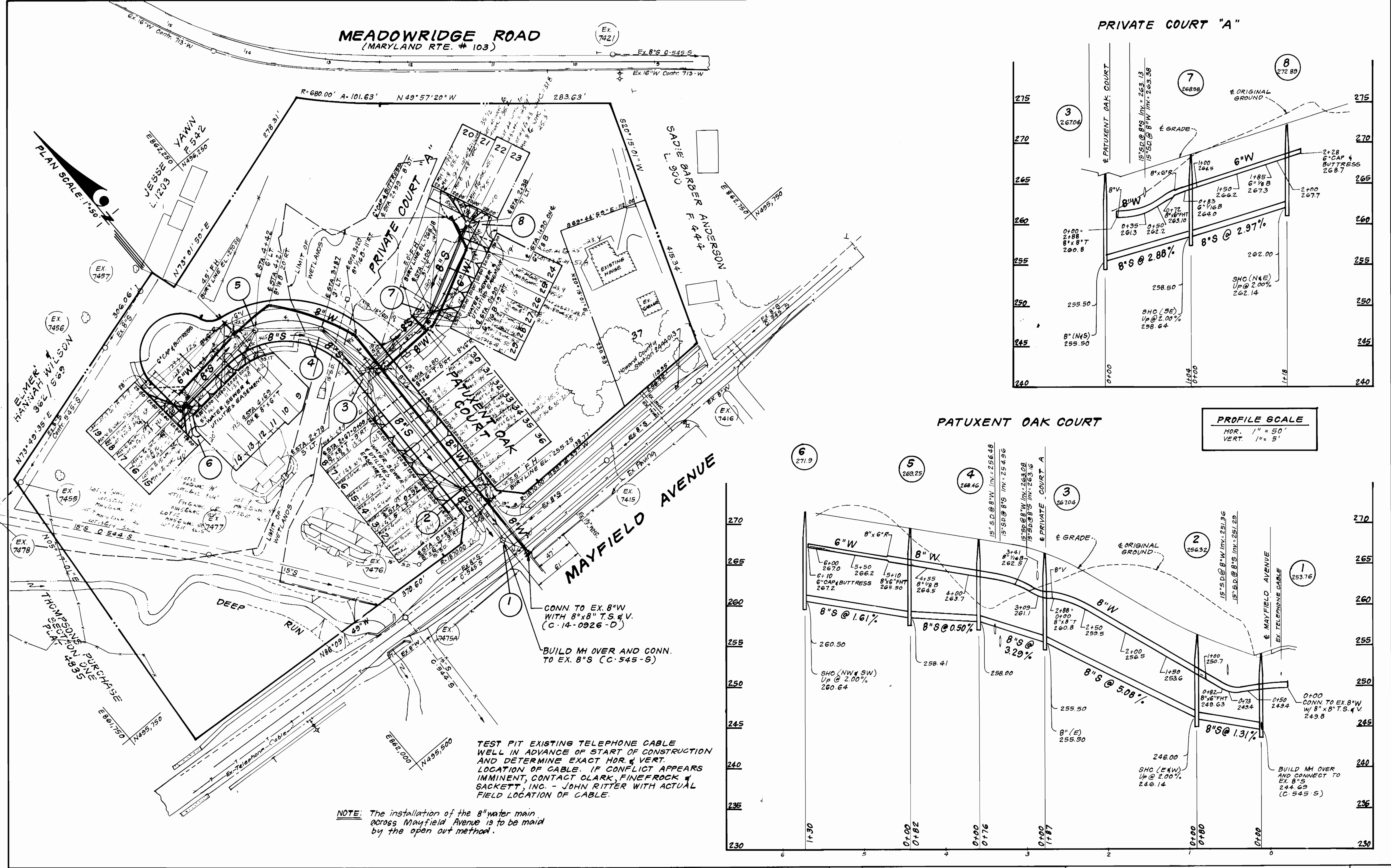
MEADOWLAND
LOTS 1 THRU 40
1ST ELECTION DISTRICT
CONTRACT NO. 14-1904-D

SCALE AS SHOWN
SHEET 1 OF 2

AS-BUILT 5/22/84

MEADOWRIDGE ROAD
(MARYLAND RTE. # 103)

PRIVATE COURT "A"



DEPARTMENT OF PUBLIC WORKS
HOWARD COUNTY, MARYLAND

CFP CLARK · FINEFROCK & SACKETT, INC.
ENGINEERS · PLANNERS · SURVEYORS
7135 MINSTREL WAY COLUMBIA MARYLAND 21045
(301) 381-7500 BALTO. (301) 621-8100 WASH.



DES: JTR	DATE: 10/88
DRN: VLM	BY NO.
CHK: JTR	REVISION
	DATE

PLAN & PROFILES
OF WATER AND SEWER MAINS

MEADOWLAND
LOTS 1 THRU 40
1ST ELECTION DISTRICT
CONTRACT NO. 14 - 1904 - D

SCALE
AS SHOWN
SHEET
2 OF 2

AS-BUILT