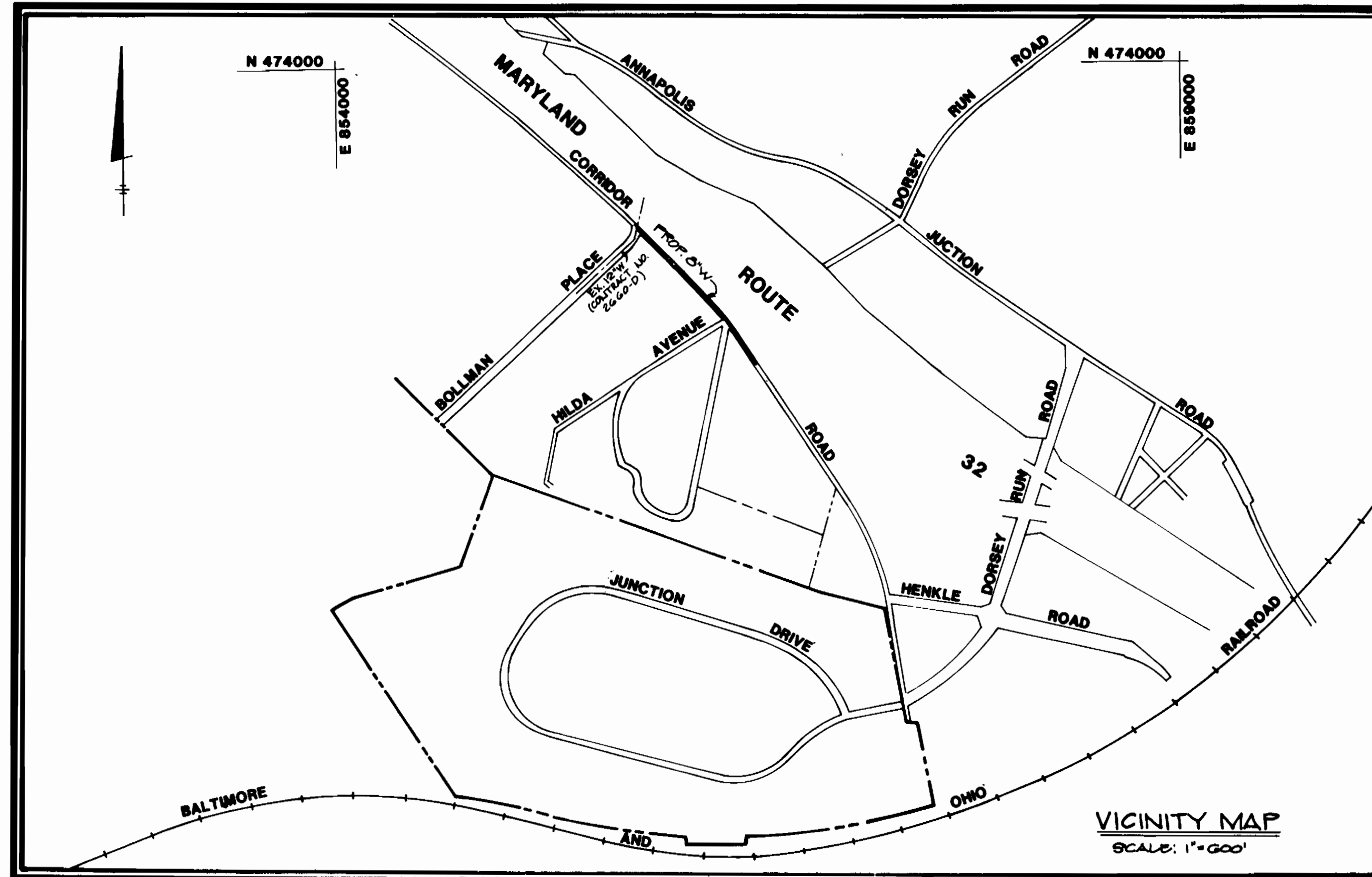


CORRIDOR RIDGE PARTNERSHIP

HOWARD COUNTY, MARYLAND

- PART I
- Approximate location of existing mains are shown. The contractor shall take all necessary precautions to protect existing mains and services and maintain uninterrupted supply. Any damage incurred shall be repaired immediately to the satisfaction of the Engineer at the Contractor's expense.
 - All horizontal controls are based on Maryland State Coordinates.
 - All vertical controls are based on U.S.G.S. data.
 - All pipe elevations shown are invert elevations.
 - Clear all utilities by a minimum of 6". Clear all poles by 2'-0" minimum or tunnel as required. The owner has contacted the utility companies and has made arrangements for bracing of poles as shown on the drawings. In the event the contractor's work requires the bracing of additional poles, any cost incurred by the owner for the bracing of additional poles or damages shall be deducted from money owed the contractor. The contractor shall coordinate with the utility companies to schedule the bracing of the poles.
 - For details not shown on the drawings, and for materials and construction methods, use Howard County Design Manual, Volume IV, Standard Specifications and Details for Construction. The contractor shall have a copy of Volume IV on the job.
 - Where test pits have been made on existing utilities, they are noted by the symbol at the location of the test pit. A note or notes containing the results of the test pit or pits is included on the drawings. Existing utilities in the vicinity of the proposed work for which test pits have not been dug shall be located by the contractor two weeks in advance of construction operations at his own expense.
 - Contractor shall notify the following utility companies or agencies at least five working days before starting work shown on these plans:
 - State Highway Administration - 531-5533
 - Baltimore Gas & Electric Co. - Contractor Services - 850-4620
 - Baltimore Gas & Electric Co. - Under Ground Damage Control - 859-9004
 - Baltimore Gas & Electric Co. - Trouble Shooting - 298-9001
 - Miss Utility - 1-559-0100
 - Colonial Pipeline Co. - 795-1390
 - Bureau of Utilities, Howard County Dept. of Public Works - 992-2366
 - Trees and shrubs are to be protected from damage to maximum extent. Trees and shrubs located within the construction strip are not to be removed or damaged by the contractor.
 - Contractor shall remove trees, stumps and roots along line of excavation. Payment for such removal shall be included in the unit price bid for construction of the main.
- PART II - WATER
- All water mains to be D.I.P. Class 52 unless otherwise noted.
 - Tops of all water mains to have a minimum of 3-1/2' cover unless otherwise noted.
 - Valves adjacent to tees shall be strapped to tees.
 - All fittings shall be buttressed or anchored with concrete in accordance with the Standard Details unless otherwise provided for on the drawings.
 - Fire hydrants shall be set to the bury line elevations shown on the drawings. All fire hydrants shall be strapped and buttressed with concrete in accordance with Standard Details. Soil around the fire hydrant shall be compacted in accordance with Section 1003 of the Standard Specifications.
 - The contractor shall not operate any water main valves on the existing water system.
 - ALL D.I.P. FITTINGS SHALL BE IN ACCORDANCE WITH AWWA SPECIFICATIONS C-155 DUCTILE IRON COMPACT FITTINGS, 8-INCH THROUGH 12-INCH FOR WATER AND OTHER LIQUIDS.

QUANTITIES			
ITEM	ESTIMATED	AS BUILT	MATERIAL/SUPPLIER
12"x6" T.O.F.V.	1	1	US PIPE
6"x6" T	1	2	US PIPE
8" WATER	1,025'	1,025'	US PIPE
12" WATER			US PIPE
6" VALVE	3	4	US APC
12" VALVE			
FIRE HYDRANT	2	2	US PIPE
AIR RELEASE MANHOLE			
BLOW OFF VALVE			
6" WATER		10 LF	US PIPE
2" WATER			
6" VALVE	2	2	US PIPE



TYPE OF BUILDINGS	N/A
NUMBER OF LOTS	1
NUMBER OF WATER HOUSE CONNECTIONS	1
NUMBER OF SEWER HOUSE CONNECTIONS	N/A
DRAINAGE AREA	LITTLE PATUKENT
WATER CODE	CO4

CONTRACT NO. 44-1903-D

WATER CONSTRUCTION PLANS

LEGEND

- PROPOSED WATER
- EXISTING WATER
- EXISTING UNDERGROUND TELL
- FIRE HYDRANT/VALVE
- EASEMENT
- EXISTING POLE/GUY WIRES
- EDGE OF PAVEMENT
- EDGE OF SHOULDER
- EXISTING CONTOUR

GRAD. Elev. 550

SEDIMENT CONTROL MEASURE FOR THIS CONTRACT WILL BE IMPLEMENTED IN ACCORDANCE WITH SECTION 219 OF THE STANDARD SPECIFICATIONS

REVIEWED FOR HOWARD SOIL CONSERVATION DISTRICT AND METRO TECHNICAL REQUIREMENT

SIGNATURE DATE

THIS DEVELOPMENT PLAN IS APPROVED FOR SOIL EROSION AND SEDIMENT CONTROL BY THE HOWARD COUNTY CONSERVATION DISTRICT.

APPROVED DATE 3/1/81
HOWARD SCD

DEPARTMENT OF PUBLIC WORKS
HOWARD COUNTY, MARYLAND

PHR&A
PATTON, HARRIS, RUST & ASSOCIATES, PC
7609 STANDISH PLACE
ROCKVILLE, MARYLAND 20855
METRO: 301-762-2220 BALT.: 301-792-7244

DES: KOK			
DRN: PC			
CHK: KOK	3	REVISED QUANTITIES CHART.	5-9-89
	2	ORIGINAL SUBMITTED TO HO.CO.	5-3-89
	1	ISSUED TO HO.CO.	1-10-89
DATE: 2-00	BY NO.	REVISION	DATE

TITLE SHEET

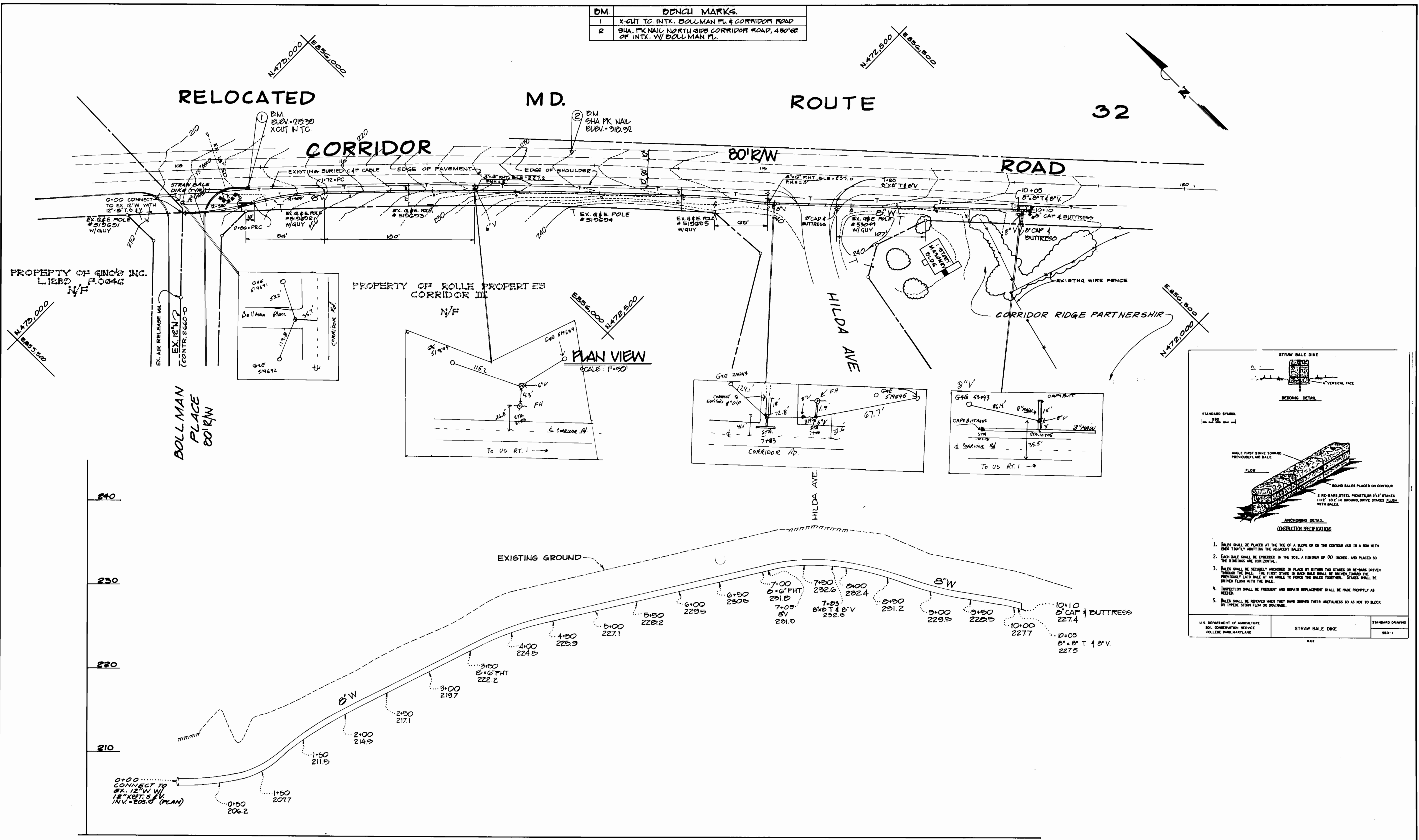
CORRIDOR RIDGE PARTNERSHIP
CONTRACT NO. 44-1903-D
SIXTH ELECTION DISTRICT
HOWARD COUNTY, MARYLAND

SCALE AS SHOWN

SHEET 1 OF 2
2212-10

1/19/80

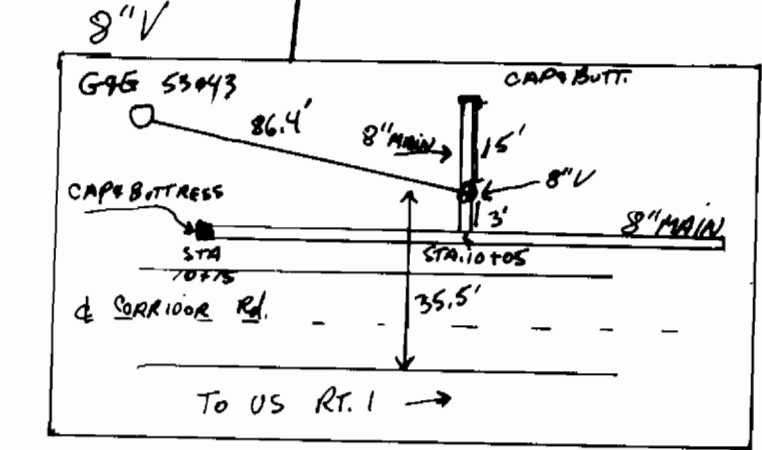
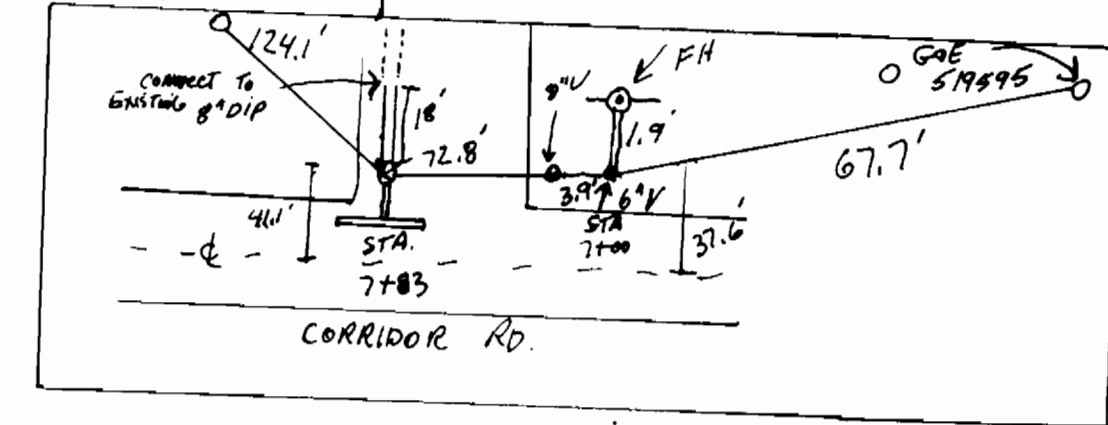
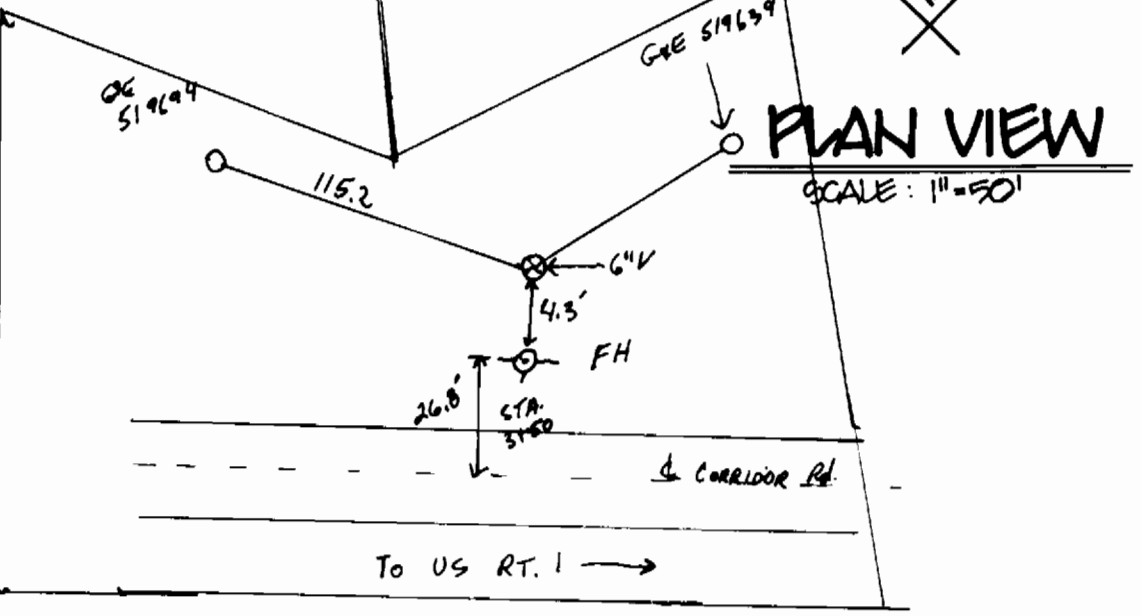
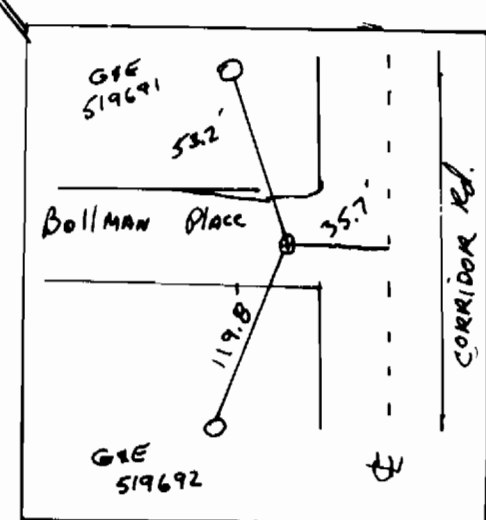
DM.	BENCH MARKS.
1	X-CUT TO INTK. BOLLMAN PL. & CORRIDOR ROAD
2	SHA. PK NAIL NORTH SIDE CORRIDOR ROAD, 480' SE OF INTK. W/ BOLLMAN PL.



PROPERTY OF GINCO INC.
L1280 F.0046

PROPERTY OF ROLLE PROPERTIES
CORRIDOR III

CORRIDOR RIDGE PARTNERSHIP



STRAW BALE DIKE

STANDARD SYMBOL

CONSTRUCTION SPECIFICATIONS

- BALES SHALL BE PLACED AT THE TOE OF A SLOPE OR ON THE CONTOUR AND IN A ROW WITH ENDS TIGHTLY BUTTING THE ADJACENT BALES.
- EACH BALE SHALL BE IMPERMEABLE IN THE SOIL A MINIMUM OF (4) INCHES, AND PLACED SO THE BINDINGS ARE HORIZONTAL.
- BALES SHALL BE SECURELY ANCHORED IN PLACE BY EITHER TWO STAKES OR RE-BARS DRIVEN THROUGH THE BALE. THE FIRST STAKE IN EACH BALE SHALL BE DRIVEN TOWARD THE PREVIOUSLY Laid BALE AT AN ANGLE TO FORCE THE BALES TOGETHER. STAKES SHALL BE DRIVEN FLUSH WITH THE BALE.
- INSPECTION SHALL BE FREQUENT AND REPAIR REPLACEMENT SHALL BE MADE PROMPTLY AS NEEDED.
- BALES SHALL BE REMOVED WHEN THEY HAVE SERVED THEIR USEFULNESS SO AS NOT TO BLOCK OR IMPED STORM FLOW OR DRAINAGE.

U.S. DEPARTMENT OF AGRICULTURE
SOIL CONSERVATION SERVICE
COLLEGE PARK, MARYLAND

STRAW BALE DIKE

STANDARD DRAWING
SBD-1

PROFILE SCALE: VERT: 1" = 5'
HORIZ: 1" = 50'

DEPARTMENT OF PUBLIC WORKS HOWARD COUNTY, MARYLAND		 PATTON, HARRIS, RUST & ASSOCIATES, PC 7603 STANISH PLACE ROCKVILLE, MARYLAND 20855 METRO: 301-762-2220 BALT: 301-792-7244		DES: KOR DRN: GL, FC CHK: KOR DATE: 2-00		PLAN & PROFILE WATER MAIN		CORRIDOR RIDGE PARTNERSHIP CONTRACT NO. 44-1903-D SIXTH ELECTION DISTRICT HOWARD COUNTY, MARYLAND		SCALE AS SHOWN SHEET 2 OF 2 22/2-10	
DIRECTOR OF PUBLIC WORKS <i>R. J. ...</i> DATE: 3-14-89		CHIEF, BUREAU OF ENGINEERING <i>[Signature]</i> DATE: 3/10/89		BY NO. 1 REVISION ORIGINAL SUBMITTED TO HACC DATE: 5-9-89		DATE: 2-00		DATE: 1/19/90		BLOCK NO.	