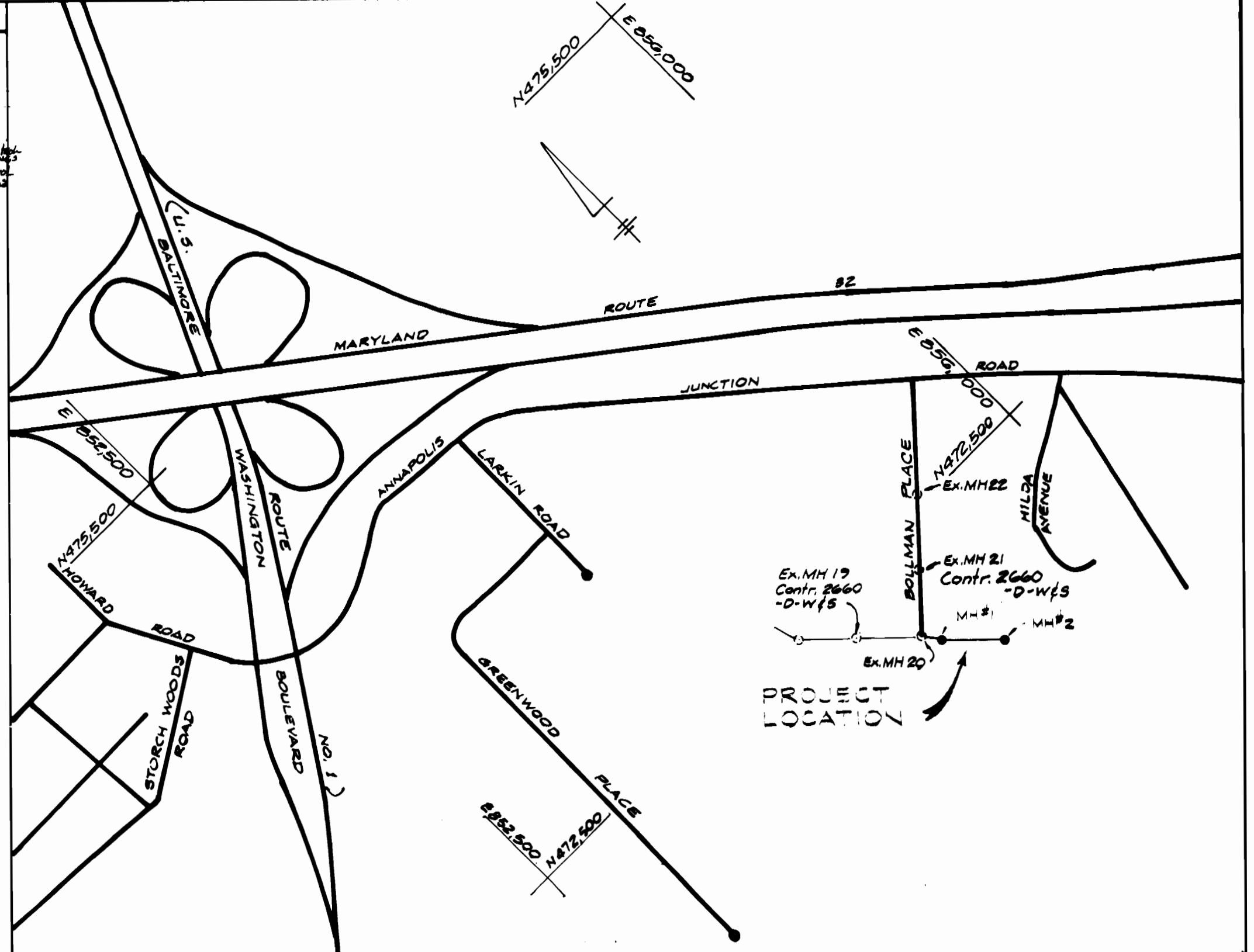
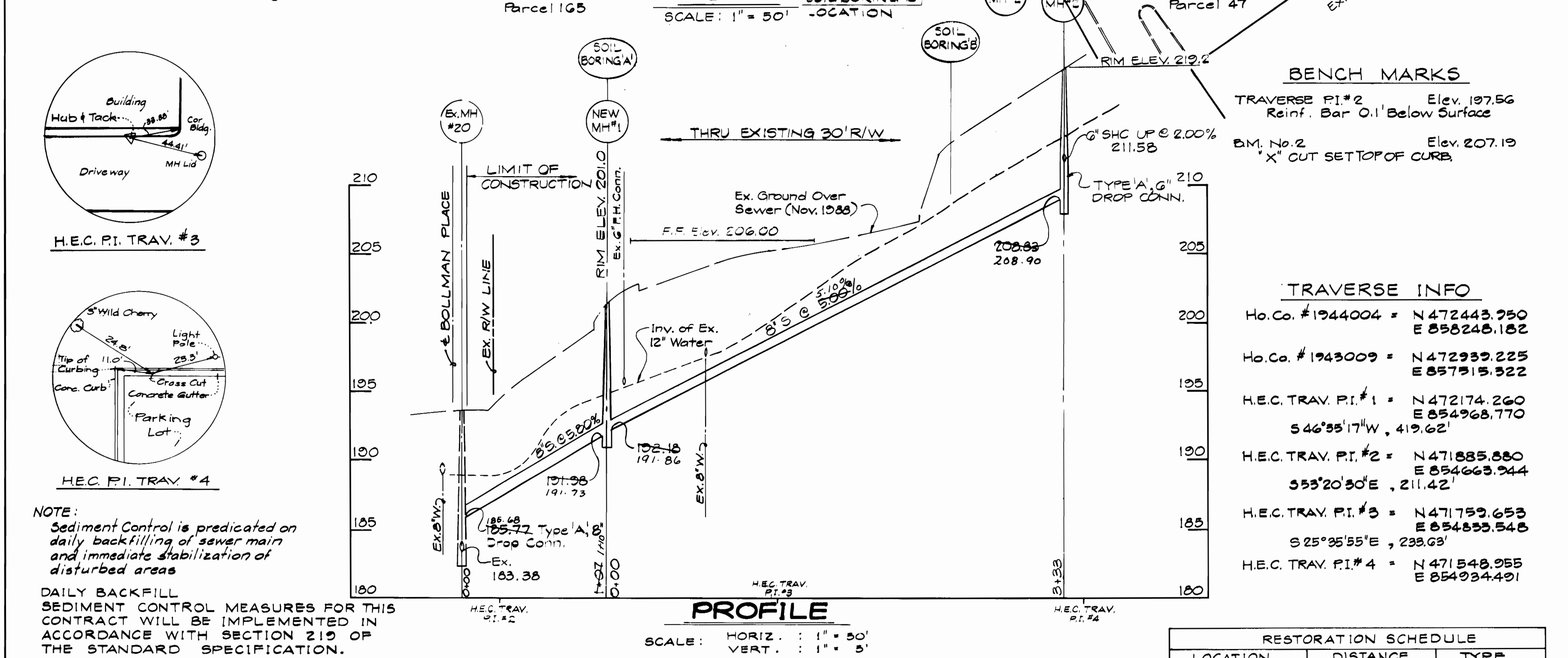
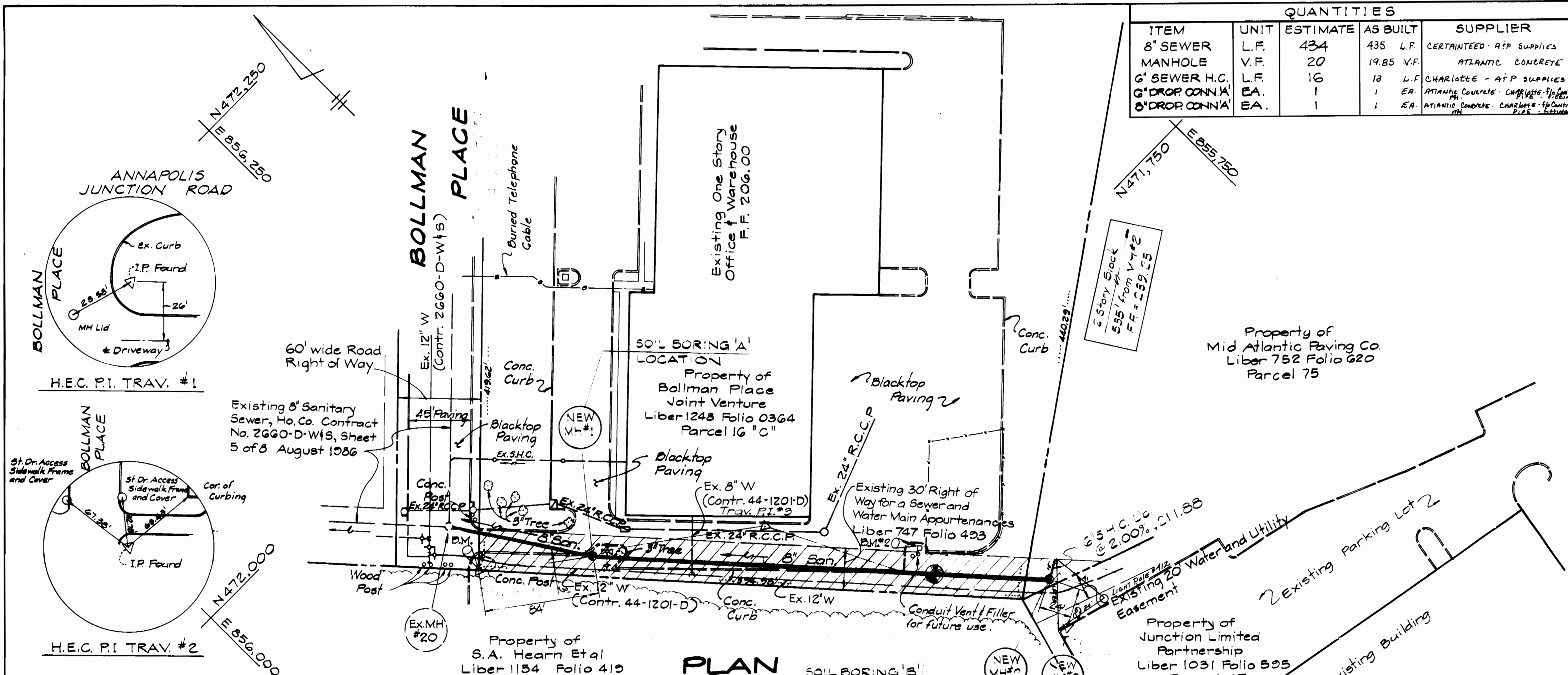


QUANTITIES			
ITEM	UNIT	ESTIMATE	AS BUILT
8" SEWER	L.F.	434	435 L.F.
MANHOLE	V.F.	20	19.85 V.F.
6" SEWER H.C.	L.F.	16	18 L.F.
6" DROP CONN. A	EA.	1	1 EA.
6" DROP CONN. B	EA.	1	1 EA.



NUMBER OF LOTS	1
TYPE OF BUILDING	INDUSTRIAL
NUMBER OF S.H.C.	1
DRAINAGE AREA	LITTLE PATUXENT

VICINITY MAP
SCALE: 1" = 600'
SEWER CODE 411000



- GENERAL NOTES**
- Approximate location of existing mains are shown. The Contractor shall take all necessary precautions to protect existing mains and services and maintain uninterrupted supply. Any damage incurred shall be repaired immediately to the satisfaction of the Engineer at the Contractor's expense.
 - All Horizontal Controls are based on Maryland State Coordinates.
 - All Vertical Controls are based on U.S.G.S Datum.
 - All pipe Elevations shown are invert Elevations.
 - Clear all utilities by a minimum of 6" Clear all poles by 2'-0" minimum or tunnel as required.
 - For Details Not Shown On The Drawings, And For Materials And Construction Methods, Use Howard County Design Manual, Volume IV, Standard Specifications And Details For Construction. The Contractor Shall Have a Copy Of Volume IV On The Job.
 - Where Test Pits Have Been Made On Existing Utilities, They Are Noted By The Symbol [Symbol]. At The Location Of The Test Pit, A Note Or Notes Containing The Results Of The Test Pit Or Pits Is Included On The Drawings. Existing Utilities In The Vicinity Of The Proposed Work For Which Tests Have Not Been Dug Shall Be Located By The Contractor Two Weeks In Advance Of Construction Operations At The Owners Expense.
 - Contractor shall notify the following Utilities Companies or Agencies at least five working days before starting work shown on these plans:
 - C&P Telephone Company 1-800-257-7777
 - State Highway Administration 931-5533
 - Baltimore Gas & Electric Co Contractor Services 650-4620
 - Baltimore Gas & Electric Co Underground Damage Control 650-9004
 - Baltimore Gas & Electric Co Trouble Shooting 295-9001
 - Miss Utility 1-800-257-7777
 - Colonial Pipeline Co 795-1300
 - Bureau of Utilities, Howard County Dept. of Public Works 992-2366
 - Trees and shrubs are to be protected from damage to maximum extent. Trees and shrubs located within the construction strip are not to be removed or damaged by the contractor.
 - Contractor shall remove trees, stumps and roots along line of excavation. Payment for such removal shall be included in the unit price for construction of the main.
 - All sewer mains shall be CSPX, RGSF, VGPX, ACP class 2400 or PVC unless otherwise noted.
 - The contractor shall provide a joint in all sewer mains within 2'-0" of exterior manhole wall.
 - All manholes shall be 4'-0" inside diameter unless otherwise noted.

BENCH MARKS

TRAVERSE P.I.#2	Elev. 197.56
Reinf. Bar 0.1' Below Surface	
B.M. No. 2	Elev. 207.19
X' CUT SETTOP OF CURB	

TRAVERSE INFO

Ho.Co. #1944004	N 472443.950	E 858248.182
Ho.Co. #1943009	N 472939.225	E 857915.922
H.E.C. TRAV. P.I. #1	N 472174.260	E 854968.770
	S 46°35'17"W, 419.62'	
H.E.C. TRAV. P.I. #2	N 471885.880	E 854663.944
	S 53°20'30"E, 211.42'	
H.E.C. TRAV. P.I. #3	N 471759.653	E 854853.548
	S 25°35'55"E, 238.63'	
H.E.C. TRAV. P.I. #4	N 471548.955	E 854934.491

RESTORATION SCHEDULE

LOCATION	DISTANCE	TYPE
Ex.MH20 to STA.0+95	95'	BLACKTOP
0+95 to MH 1	10'	SEED
MH 1 to STA.0+20	20'	SEED
STA.0+20 to STA.2+00	180'	BLACKTOP
STA.2+00 to STA.2+30	30'	CONC.CURB/SEED
STA.2+30 to MH 2	108'	SEED
S.H.C.	16'	SEED

REVIEWED FOR HOWARD SOIL CONSERVATION DISTRICT AND MEETS TECHNICAL REQUIREMENT.
5-19-89
U.S. SOIL CONSERVATION SERVICE

This Construction Plan is approved for Soil Erosion and Sediment Control by the Howard Soil Conservation District.
APPROVED: [Signature]
HOWARD S.C.D. DATE: 2-19-89

MANHOLE STAKEOUT TABLE

MANHOLE	DISTANCE	OFFSET
1	84' East of Trav. P.I.#2	3' South
2	24' Northwest of Trav. P.I.#4	2' North

DEPARTMENT OF PUBLIC WORKS
HOWARD COUNTY, MARYLAND
DIRECTOR OF PUBLIC WORKS: [Signature] DATE: 5-16-89
CHIEF, BUREAU OF UTILITIES: [Signature] DATE: 6-1-89

HICKS ENGINEERING CO. INC.
ENGINEERS · SURVEYORS · PLANNERS
200 E. JOPPA ROAD · SUITE 402
TOWSON MARYLAND 21204
DONALD HICK P.E. REG. NO. 8676

DES: T.A.W.
DRN: L.A.W.
CHK: D.E.H.
DATE: _____ BY: _____ NO: _____

8" SANITARY SEWER
CONTRACT NO. 20-1891

CORRIDOR PARK SEWER EXTENSION
SIXTH ELECTION DISTRICT
HOWARD COUNTY, MARYLAND
CAPITAL PROJECT S-6689

SCALE AS SHOWN
SHEET 1 OF 1

AS-BUILT
4.2.90