

# DORSEY HALL

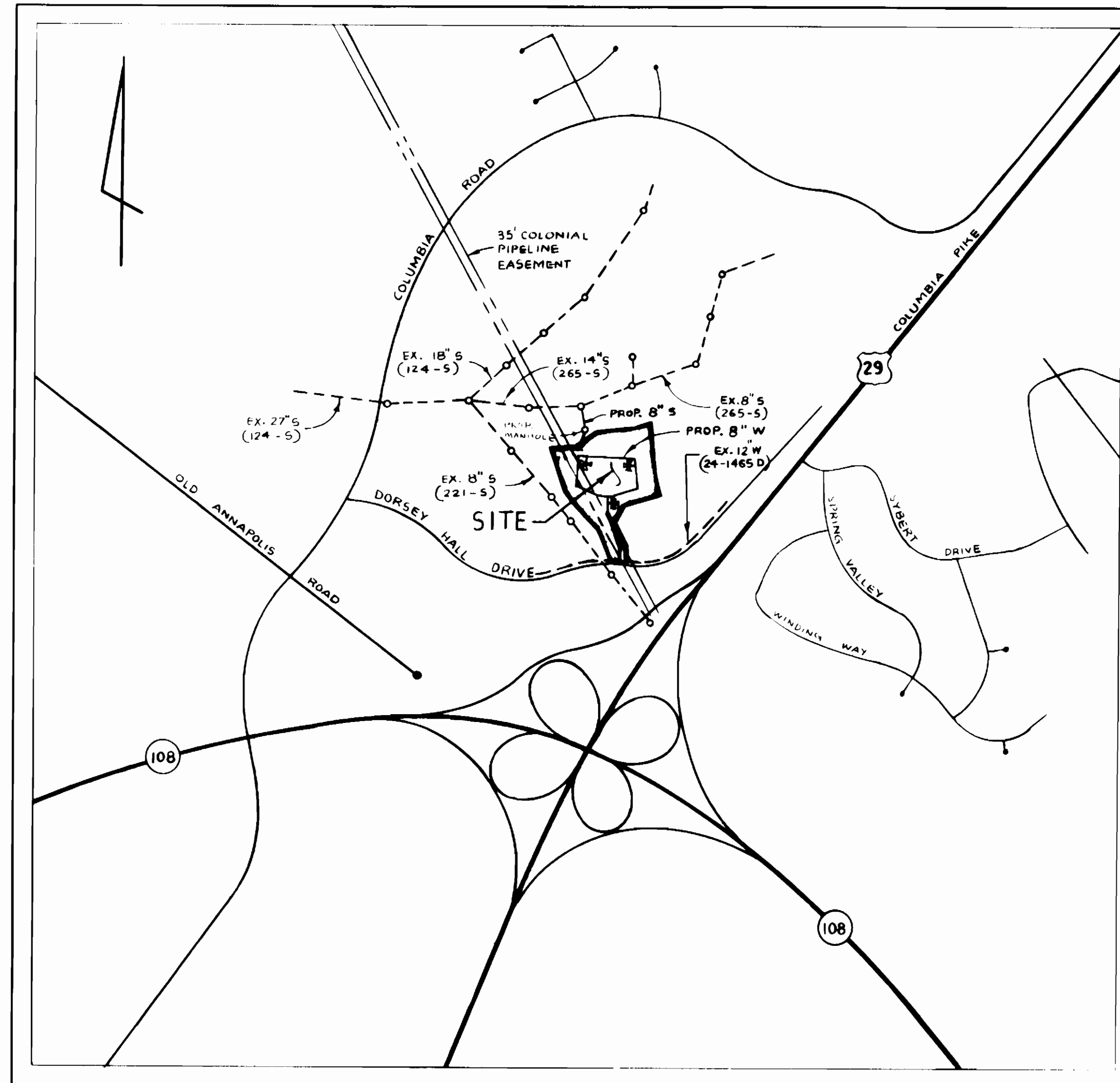
## HOWARD COUNTY, MARYLAND

### DEPARTMENT OF PUBLIC WORKS

#### GENERAL NOTES

- 1 ALL WATER MAIN TO BE D.I.P. UNLESS OTHERWISE SHOWN. ALL FITTINGS FOR THE 8" MAIN TO BE D.I.P. COMPACT FITTINGS (SEE NOTE # 24)
- 2 TOP OF ALL WATER MAINS TO HAVE A MINIMUM OF 3.5 FT. COVER UNLESS OTHERWISE NOTED.
- 3 VALVES ADJACENT TO TEES SHALL BE STRAPPED TO TEES.
- 4 BLOCK ALL FITTINGS WITH CONCRETE. SEE STANDARDS BOUND IN SPECIFICATIONS.
- 5 BURY LINE ELEVATIONS ON FIRE HYDRANTS SHALL BE SET TO THE ELEVATIONS SHOWN ON THE DRAININGS. ALL FIRE HYDRANTS SHALL BE STRAPPED AND REINFORCED WITH CONCRETE IN ACCORDANCE WITH STANDARD DETAILS. SOIL AROUND THE FIRE HYDRANT TO BE COMPACTED IN ACCORDANCE WITH SECTION 10.03 & 10.08 OF THE STANDARD SPECIFICATIONS.
- 6 ALL SEWER MAINS SHALL BE C.S.P.X., R.C.S.P., V.C.P.X., OR A.C.P. CLASS 2400 UNLESS OTHERWISE NOTED.
- 7 THE CONTRACTOR SHALL PROVIDE A JOINT IN ALL SEWER MAINS WITHIN 2'-0" OF EXTERIOR MANHOLE WALL.
- 8 ALL MANHOLES SHALL BE 4'-0" INSIDE DIAMETER, UNLESS OTHERWISE NOTED.
- 9 APPROXIMATE LOCATIONS OF EXISTING MAINS ARE SHOWN. THE CONTRACTOR SHALL TAKE ALL NECESSARY PRECAUTIONS TO PROTECT EXISTING MAINS AND SERVICES AND MAINTAIN UNINTERRUPTED SUPPLY. ANY DAMAGE INCURRED SHALL BE REPAIRED IMMEDIATELY TO THE SATISFACTION OF THE ENGINEER. AT THE CONTRACTOR'S EXPENSE.
- 10 ALL HORIZONTAL CONTROLS ARE BASED ON MARYLAND STATE COORDINATES.
- 11 ALL VERTICAL CONTROLS ARE BASED ON U.S.G.S. DATUM.
- 12 ALL PIPE ELEVATIONS SHOWN ARE INVERT ELEVATIONS.
- 13 CLEAR ALL UTILITIES BY A MINIMUM OF 6" CLEAR ALL POLES BY 2'-0" MINIMUM OR TUNNEL AS REQUIRED. ANY COST INCURRED TO THE CONTRACTOR FOR TUNNELING OR BRACING AT POLES SHALL BE INCLUDED IN UNIT PRICES BID FOR CONSTRUCTION OF MAIN.
- 14 FOR DETAILS NOT SHOWN ON DRAWINGS USE HOWARD COUNTY STANDARD DETAILS.
- 15 CONTRACTOR SHALL LOCATE EXISTING UTILITIES A MINIMUM OF TWO (2) WEEKS IN ADVANCE OF CONSTRUCTION OPERATIONS IN THE VICINITY OF PROPOSED UTILITIES AT HIS OWN EXPENSE.
- 16 TREES ARE TO BE PROTECTED FROM DAMAGE TO MAXIMUM EXTENT. TREES LOCATED WITHIN THE CONSTRUCTION TRIP ARE NOT TO BE REMOVED OR DAMAGED BY THE CONTRACTOR.
- 17 CONTRACTOR SHALL REMOVE TREES, STUMPS, AND ROOTS ALONG LINE OF EXCAVATION AS DIRECTED BY ENGINEER. PAYMENT FOR SUCH REMOVAL SHALL BE INCLUDED IN THE UNIT PRICE BID FOR CONSTRUCTION OF THE MAIN.
- 18 PLACE REGULATION "MEN WORKING" AND WARNING SIGNS AS REQUIRED TO COMPLY WITH MARYLAND STATE HIGHWAY ADMINISTRATION MANUAL OF TRAFFIC CONTROL FOR HIGHWAY CONSTRUCTION AND MAINTENANCE OPERATIONS.
- 19 CONTRACTOR SHALL NOTIFY THE FOLLOWING UTILITIES OR AGENCIES AT LEAST FIVE (5) WORKING DAYS BEFORE STARTING WORK SHOWN ON THESE PLANS:  
 STATE HIGHWAY ADMINISTRATION - 531-5533  
 BALTIMORE GAS AND ELECTRIC COMPANY - UNDERGROUND ELECTRIC DISTRIBUTION (CUSTOMER SERVICE 685-0123)  
 ENGINEERING "DAMAGE CONTROL" - 234-5621  
 BALTIMORE GAS AND ELECTRIC COMPANY - UNDERGROUND GAS DISTRIBUTION (CUSTOMER SERVICE 685-0123)  
 "MISS UTILITY" - 1-553-0100  
 CHESAPEAKE & POTOMAC (CAP) TELEPHONE CO. - 725-9976  
 AMERICAN TELEPHONE AND TELEGRAPH - CABLE LOCATION DIVISION - 393-3553  
 COLONIAL PIPELINE COMPANY - 795-1390  
 BUREAU OF UTILITIES HOWARD COUNTY - 992-2366
- 20 FOR MATERIALS AND CONSTRUCTION METHODS USE HOWARD COUNTY STANDARD SPECIFICATIONS.
- 21 ALL WATER HOUSE CONNECTIONS SHALL BE FOR AN OUTSIDE METER SETTING.
- 22 THE CONTRACTOR SHALL NOT OPERATE ANY WATER MAIN VALVES ON THE EXISTING SYSTEM.
- 23 WATER MAIN AND WATER HOUSE CONNECTION LINES MUST HAVE A MINIMUM OF ONE FOOT SEPARATION FROM THE SANITARY SEWER AND SEWER HOUSE CONNECTIONS AS THEY CROSS EXCEPT AT CROSSINGS. WATER AND SEWER LINES SHALL HAVE A MINIMUM HORIZONTAL SEPARATION OF 10'.
- 24 ALL D.I.P. FITTINGS SHALL BE IN ACCORDANCE WITH AWWA SPECIFICATION C-153 DUCTILE IRON COMPACT FITTINGS, 3-INCH THROUGH 12 INCH FOR WATER AND OTHER LIQUIDS.
- 25 ALL MANHOLES DESIGNATED "W.T." IN PROFILE SHALL HAVE WATER TIGHT FRAMES & COVERS STANDARD DETAIL # 5.52, WHERE W.T. MANHOLE FRAME & COVER REQUIRED. SET UP TOP OF FRAME 1"6" ALONG FINISHED GRADE UNLESS OTHERWISE NOTED.

QUANTITIES				
ITEM	UNIT	ESTIMATED	AS BUILT	MATERIAL/SUPPLIER
8" Sewer	L.F.	40	34	MUNICIPALITY UNIT SALES
Manhole	EA.	1	1	MUNICIPALITY UNIT SALES
8" Water	L.F.	1550	1556	MUNICIPALITY UNIT SALES
6" Water	L.F.			
8" Valve	EA.	4	3	MUNICIPALITY UNIT SALES
6" Valve (Excluding F.H. Valves)	EA.	-		
Fire Hydrant	EA.	3	3	MUNICIPALITY UNIT SALES
Air Release Manhole	EA.	-		



SEDIMENT CONTROL MEASURES FOR THIS CONTRACT WILL BE IMPLEMENTED IN ACCORDANCE WITH SECT-15 OF THE HOWARD COUNTY DESIGN MANUAL AND STANDARD SPECIFICATIONS FOR SOIL EROSION AND SEDIMENT CONTROL IN DEVELOPING AREAS, AND SDP-89-72.

REVIEWED FOR HOWARD COUNTY SOIL CONSERVATION DISTRICT AND MEETS TECHNICAL REQUIREMENTS.

*J. Helms* 2-7-89  
 Soil Conservation Service Date

THIS DEVELOPMENT IS APPROVED FOR EROSION AND SEDIMENT CONTROL BY THE HOWARD SOIL CONSERVATION DISTRICT

*Stephen F. ...* 2/7-89  
 Howard Soil Conservation District Date

REFERENCE:  
 PLAT # 8199  
 SDP-89-72

TYPE OF BUILDINGS	OFFICE CONDOMINIUMS
NUMBER OF LOTS	1
NUMBER OF WATER HOUSE CONNECTIONS	7
NUMBER OF SEWER HOUSE CONNECTIONS	1
DRAINAGE AREA	LITTLE PATENT

TREATMENT PLANT FOR SEWER: PATAPSCO (VIA RIE I.R. PUMPING STATION)

LOCATION MAP  
 SCALE: 1" = 600'

Water and Sewer Code  
 (County Use)  
 Sewer No. 5750000  
 Water No. EQB

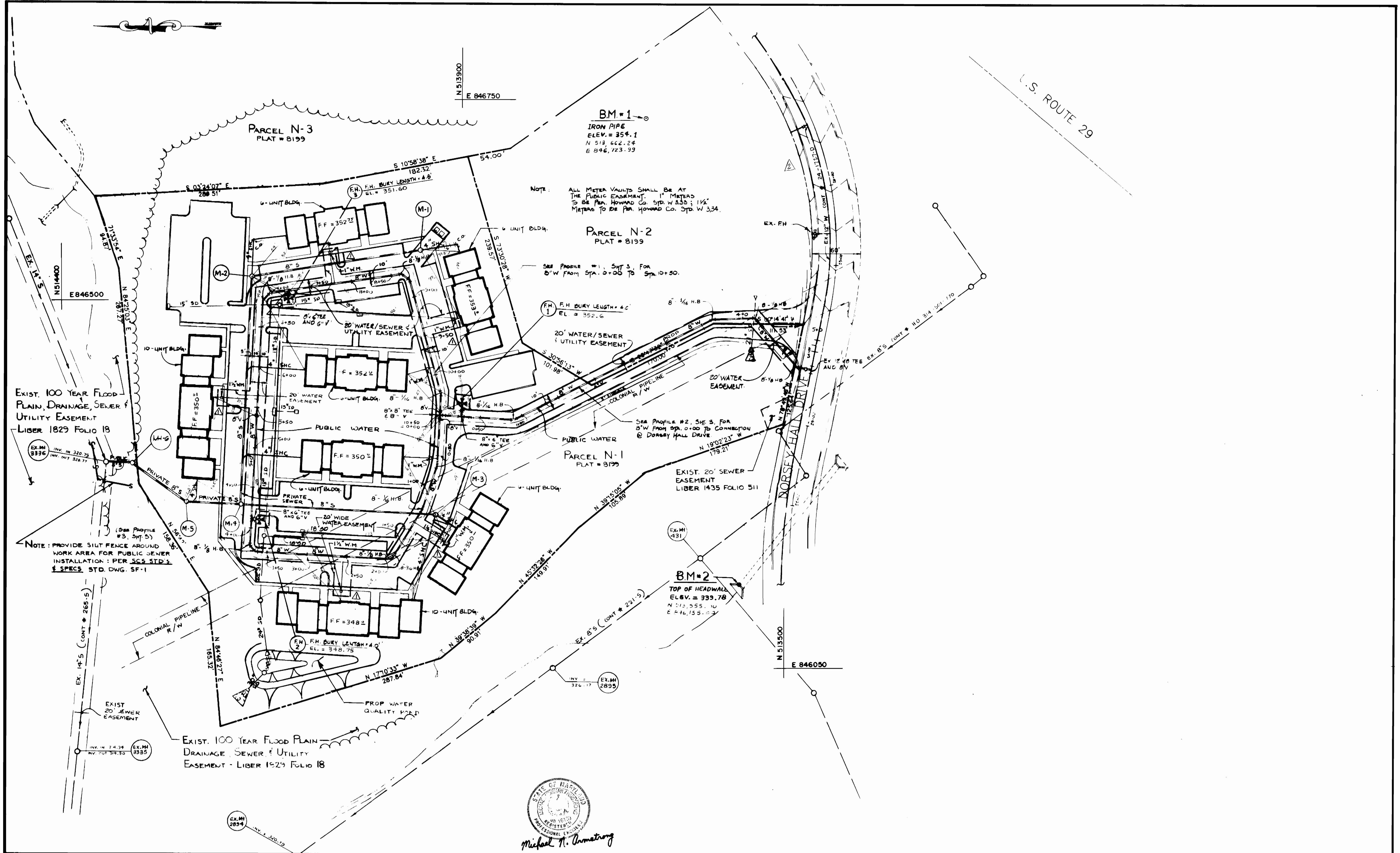


*Michael N. Armstrong*

<p>DEPARTMENT OF PUBLIC WORKS          HOWARD COUNTY, MARYLAND</p> <p><i>James H. ...</i> 2-10-89          DIRECTOR OF PUBLIC WORKS DATE</p> <p><i>Robert ...</i> 2-9-89          CHIEF, BUREAU OF UTILITIES DATE</p>	<p>ENGINEERING TECHNOLOGIES          ASSOCIATES, INC.          ENGINEERS, SURVEYORS, CONSTRUCTION MANAGERS          2400 ELLICOTT CENTER DRIVE          ELLICOTT CITY, MD 21043          (301) 481-9900</p>	<p>CONTRACT NO.          24-1887-D</p>	<p>DES: _____</p> <p>DRN: _____</p> <p>CHK: _____</p> <p>DATE: _____</p>	<p><b>TITLE SHEET</b></p> <p><b>WATER AND SEWER MAINS</b></p>	<p>SCALE AS SHOWN</p> <p>SHEET 1 OF 3</p>
---	---	--	--	---	---

**DORSEY HALL**  
 (OFFICE CONDOMINIUMS)  
 SECTION - 2 AREA - 5 PARCEL N-1  
 2<sup>ND</sup> ELECTION DISTRICT, HOWARD COUNTY, MARYLAND

6-15-89



EXIST. 100 YEAR FLOOD PLAIN, DRAINAGE, SEWER & UTILITY EASEMENT - LIBER 1829 FOLIO 18

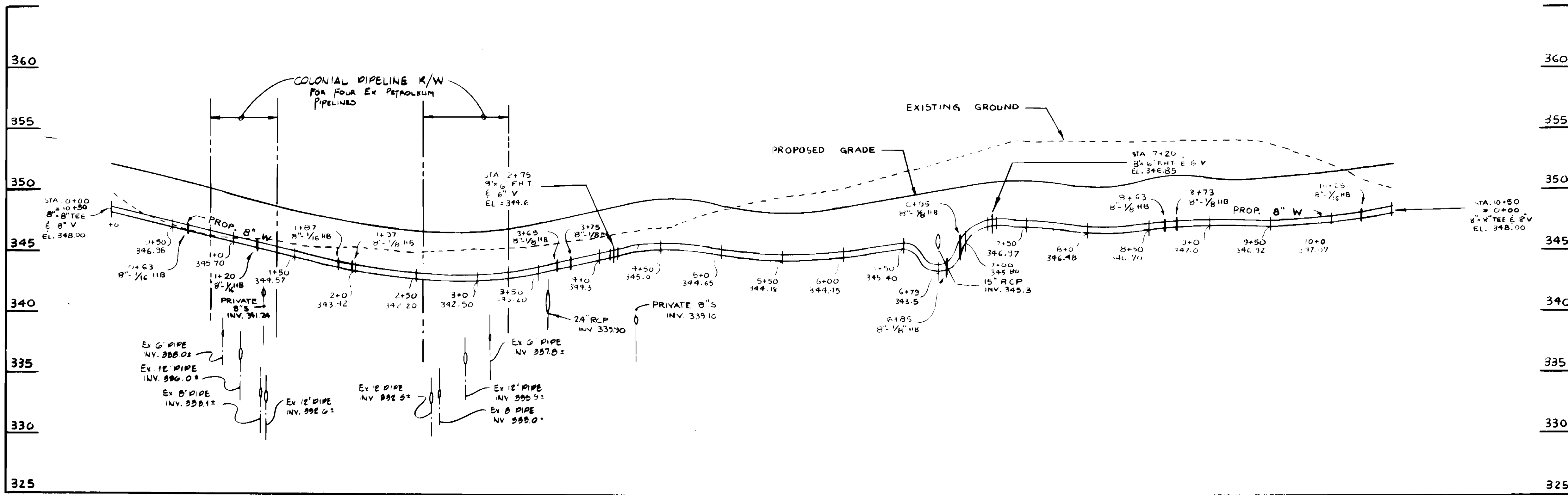
NOTE: PROVIDE SILT FENCE AROUND WORK AREA FOR PUBLIC SEWER INSTALLATION: PER SCS STD'S & SPECS STD. DWG. SF-1



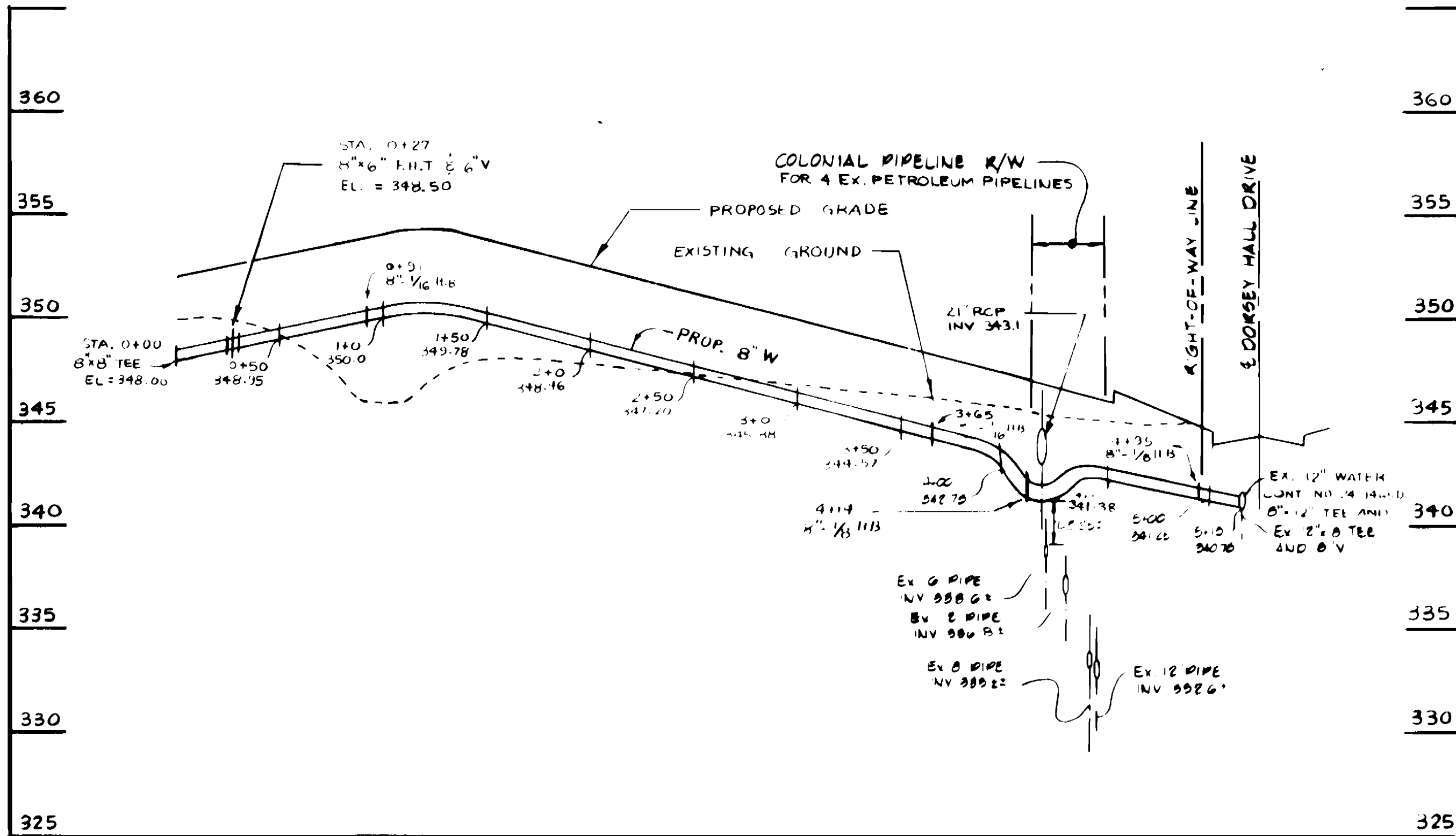
Michael N. Armstrong

DEPARTMENT OF PUBLIC WORKS HOWARD COUNTY, MARYLAND Director of Public Works: Vance [Signature] 2/14/05 Chief, Bureau of Engineering: [Signature] 2-10-09 Chief, Bureau of Utilities: [Signature] 2-9-09 Chief, Land Development Division: [Signature] 2/10/05		ENGINEERING TECHNOLOGIES ASSOCIATES, INC. ENGINEERS, SURVEYORS, CONSTRUCTION MANAGERS 3448 ELLEGGY CENTER DRIVE ELLEGGY CITY, MD 21042 (301) 441-1900		CONTRACT NO. 24-1887-D	DES: [Signature] DRN: [Signature] CHK: [Signature] DATE:	? WH CHK DATE:	ADDED 6 WATER EASEMENTS CHANG. CONST. NO. 3/1/09 1/24/09	PLAN WATER AND SEWER MAINS	SCALE AS SHOWN SHEET 2 OF 3
EXIST. 100 YEAR FLOOD PLAIN - DRAINAGE, SEWER & UTILITY EASEMENT - LIBER 1929 FOLIO 18		EXIST. 20' SEWER EASEMENT LIBER 1435 FOLIO 511		EXIST. 20' SEWER EASEMENT LIBER 1435 FOLIO 511		EXIST. 20' SEWER EASEMENT LIBER 1435 FOLIO 511		600' SCALE N.A.P. NO. 30 BLOCK NO. 4	

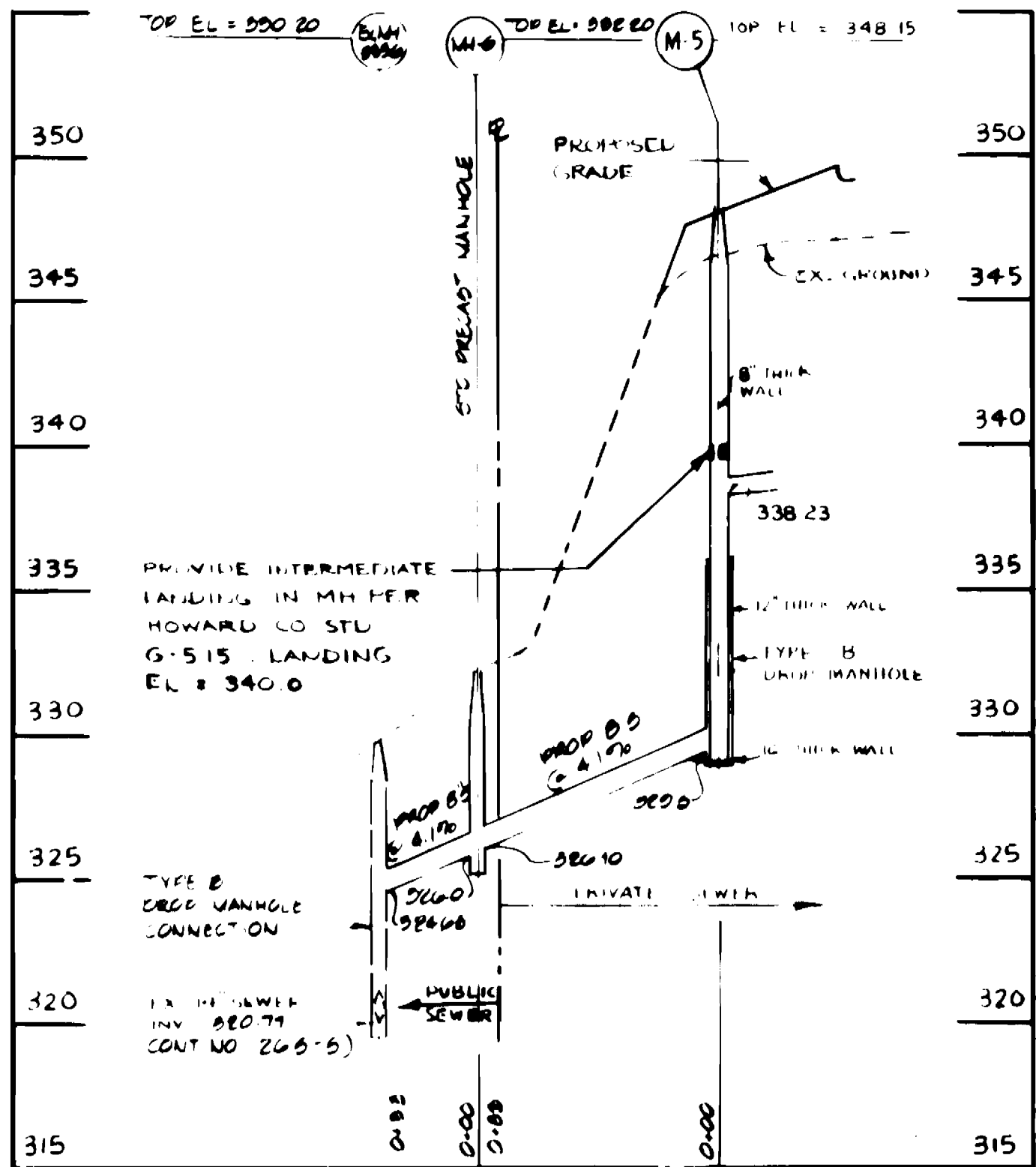
AS-BUILT 6-15-09



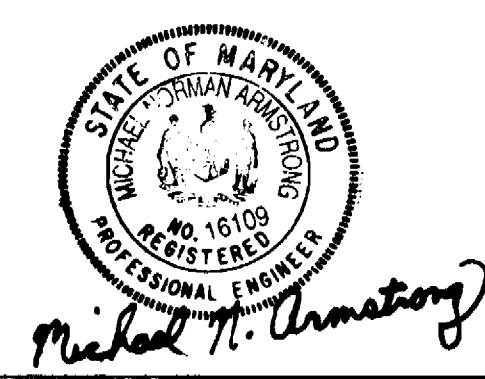
**PROFILE #1**  
SCALE: HORZ. 1" = 50'  
VERT. 1" = 5'



**PROFILE #2**  
SCALE: HORZ. 1" = 50'  
VERT. 1" = 5'



**PROFILE #3**  
SCALE: HORZ. 1" = 50'  
VERT. 1" = 5'



<b>DEPARTMENT OF PUBLIC WORKS</b> HOWARD COUNTY, MARYLAND Director of Public Works: <i>James M. ...</i> 2/12/89 Chief, Bureau of Engineering: <i>...</i> 2-10-89 Chief, Bureau of Utilities: <i>...</i> 2-4-89 Chief, Land Development Division: <i>...</i> 2/10/89		<b>ENGINEERING TECHNOLOGIES ASSOCIATES, INC.</b> ENGINEERS, SURVEYORS, CONSTRUCTION MANAGERS 2488 ELICOTT CENTER DRIVE ELICOTT CITY, MD 21042 (301) 481-9820		<b>CONTRACT NO.</b> 24-1887-D		<b>PROFILE</b> <b>WATER AND SEWER MAINS</b>		<b>DORSEY HALL</b> (OFFICE CONDOMINIUMS) SECTION - 2 AREA - 5 PARCEL N-1 2 <sup>ND</sup> ELECTION DISTRICT, HOWARD COUNTY, MARYLAND		SCALE AS SHOWN SHEET 3 OF 3
DATE: _____ BY: _____ NO: _____		REVISION: _____ DATE: _____		600 SCALE MAP NO. 30 BLOCK NO. 4		AS-BUILT 6-15-89				