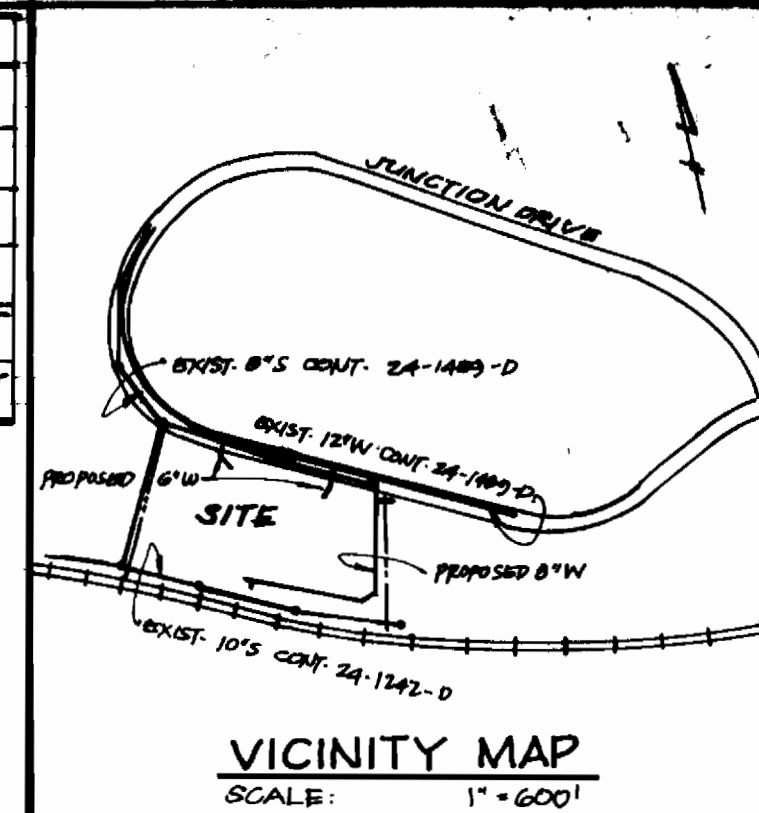
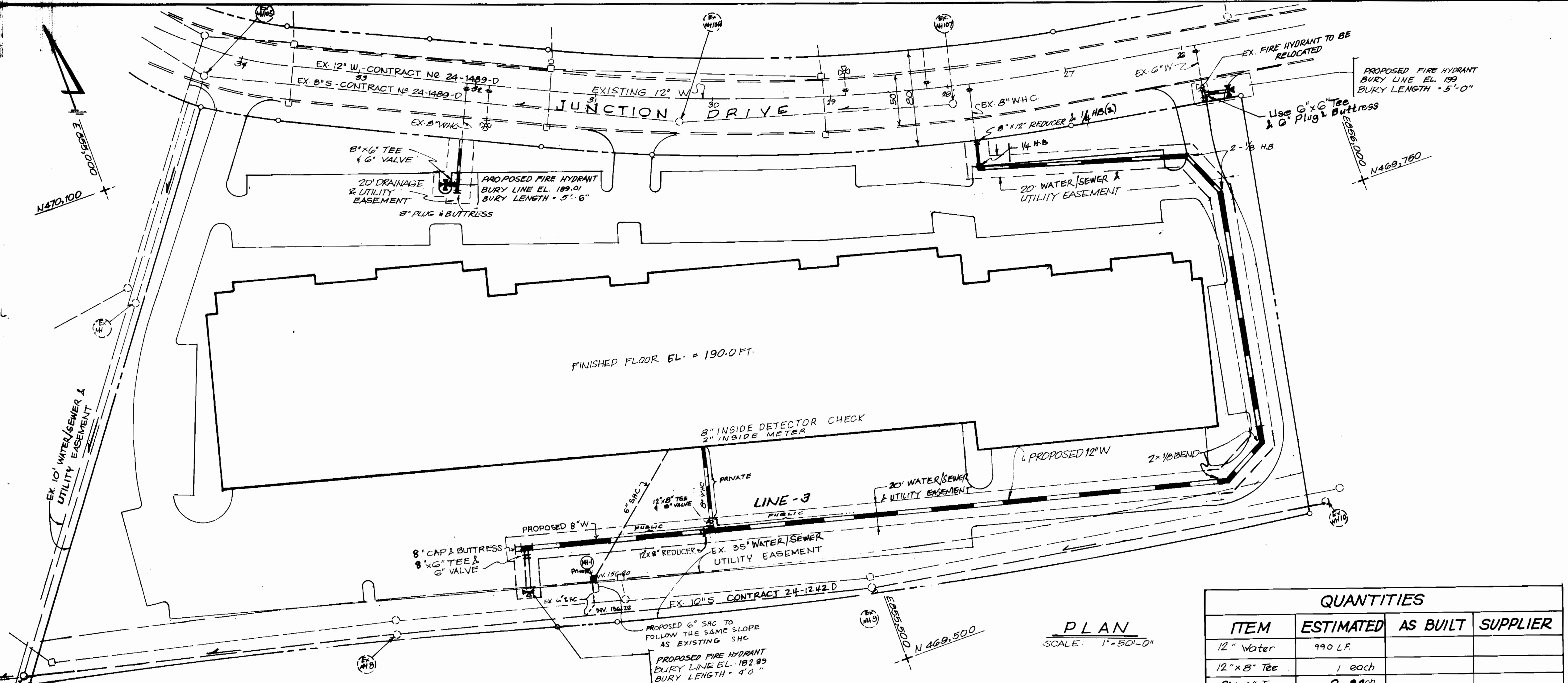


INFORMATION CHART	
TYPE OF BUILDING - OFFICE	WAREHOUSE
NO. OF WHC	- 1
NO. OF SHC	- 1
TREATMENT PLANT - LITTLE PATUXENT	
DRAINAGE AREA - LITTLE PATUXENT	

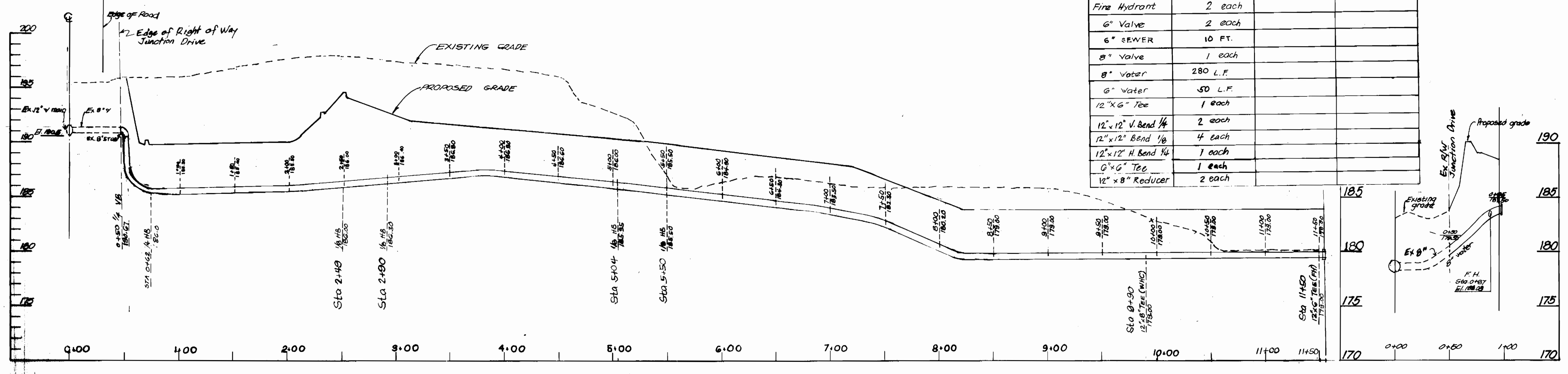


WATER CODE - C04  
SEWER CODE - W020000



PLAN  
SCALE: 1" = 50'-0"

QUANTITIES			
ITEM	ESTIMATED	AS BUILT	SUPPLIER
12" Water	990 L.F.		
12" x 8" Tee	1 each		
8" x 6" Tee	2 each		
Fire Hydrant	2 each		
6" Valve	2 each		
6" SEWER	10 FT.		
8" Valve	1 each		
8" Water	280 L.F.		
6" Water	50 L.F.		
12" x 6" Tee	1 each		
12" x 12" V. Bend 1/4	2 each		
12" x 12" H. Bend 1/4	4 each		
12" x 12" H. Bend 1/4	1 each		
6" x 6" Tee	1 each		
12" x 8" Reducer	2 each		



PROFILE  
"WATER LINE"  
SCALE: 1" = 50' HORIZONTAL  
1" = 5' VERTICAL

APPROVED FOR EROSION AND SEDIMENT CONTROL BY HOWARD COUNTY SOIL CONSERVATION DISTRICT  
DATE: 9/28/90

HOWARD COUNTY SOIL CONSERVATION DISTRICT TECHNICAL REQUIREMENT  
DATE: 9/28/90

NOTE:  
SEDIMENT CONTROL FOR THIS CONSTRUCTION IS PROVIDED UNDER SDP 90-178.

\* THIS PLAN SUPERSEDES THE WATER AND SEWER CONSTRUCTION PLAN APPROVED ON 01-25-89.

- GENERAL NOTES
- APPROXIMATE LOCATION OF EXISTING MAINS ARE SHOWN. THE CONTRACTOR SHALL TAKE ALL NECESSARY PRECAUTIONS TO PROTECT EXISTING MAINS AND SERVICES AND MAINTAIN UNINTERRUPTED SUPPLY. ANY DAMAGE INCURRED SHALL BE REPAIRED IMMEDIATELY TO THE SATISFACTION OF THE ENGINEER AT THE CONTRACTOR'S EXPENSE.
  - ALL HORIZONTAL CONTROLS ARE BASED ON MARYLAND STATE COORDINATES.
  - ALL VERTICAL CONTROLS ARE BASED ON U.S.G.S DATUM.
  - ALL PIPE ELEVATIONS SHOWN ARE INVERT ELEVATIONS.
  - CLEAR ALL UTILITIES BY A MINIMUM OF 6".
  - FOR DETAILS NOT SHOWN ON THE DRAWINGS, AND FOR MATERIALS AND CONSTRUCTION METHODS, USED HOWARD COUNTY DESIGN MANUAL, VOLUME IV, STANDARD SPECIFICATIONS AND DETAILS FOR CONSTRUCTION. THE CONTRACTOR SHALL HAVE A COPY OF VOLUME IV ON THE JOB.
  - WHERE TEST PITS HAVE BEEN MADE ON EXISTING UTILITIES, THEY ARE NOTED BY THE SYMBOL AT THE LOCATION OF THE TEST PIT. A NOTE OR NOTES CONTAINING THE RESULTS OF THE TEST PIT OR PITS IS INCLUDED ON THE DRAWINGS. EXISTING UTILITIES IN THE VICINITY OF THE PROPOSED WORK FOR WHICH PITS HAVE BEEN MADE SHALL BE VERIFIED BY THE CONTRACTOR TO HIS OWN SATISFACTION. ANY DAMAGE TO EXISTING FACILITIES DUE TO THE CONTRACTOR'S NEGLIGENCE SHALL BE REPAIRED AT THE CONTRACTOR'S EXPENSE.
  - CONTRACTOR SHALL NOTIFY THE FOLLOWING UTILITIES OR AGENCIES AT LEAST FIVE WORKING DAYS BEFORE STARTING WORK ON THESE PLANS:  
STATE HIGHWAY ADMINISTRATION - 531-5533  
BALTIMORE GAS AND ELECTRIC, CONTRACTOR SERVICES - 561-2585  
BALTIMORE GAS & ELECTRIC CO. UNDERGROUND DAMAGE CONTROL - 234-5621  
BALTIMORE GAS & ELECTRIC CO. TROUBLE SHOOTING: 298-9013  
REES UTILITY: 1-301-558-0100  
COLONIAL PIPE LINE COMPANY: 795-1390  
HOWARD COUNTY DEPARTMENT OF PUBLIC WORKS  
CONSTRUCTION INSPECTION DIVISION - 792-7272  
BUREAU OF UTILITIES - 992-2366
  - TREES AND SHRUBS SHALL BE PROTECTED FROM DAMAGE TO MAXIMUM EXTENT. TREES AND SHRUBS LOCATED WITHIN THE CONSTRUCTION STRIP ARE NOT TO BE REMOVED OR DAMAGED BY THE CONTRACTOR.
  - CONTRACTOR SHALL REMOVE TREES, STUMPS AND ROOTS ALONG LINE OF EXCAVATION. PAYMENT FOR SPACE REMOVAL SHALL BE INCLUDED IN THE UNIT PRICE BID FOR CONSTRUCTION OF THE MAIN.
  - ALL WATER MAINS TO BE D.I.P. CLASS 52 UNLESS OTHERWISE NOTED.
  - TOPS OF ALL WATER MAINS SHALL HAVE A MINIMUM OF 3-1/2 FEET UNLESS OTHERWISE NOTED.
  - VALVES ADJACENT TO TEES SHALL BE STRAPPED TO TEES.
  - ALL FITTINGS SHALL BE BUTTRESSED OR ANCHORED WITH CONCRETE IN ACCORDANCE WITH THE STANDARD DETAILS UNLESS OTHERWISE PROVIDED FOR IN THE DRAWINGS.
  - FIRE HYDRANTS SHALL BE SET TO THE BURY LINE ELEVATIONS SHOWN ON THE DRAWINGS. ALL FIRE HYDRANTS SHALL BE STRAPPED AND BUTTRESSED WITH CONCRETE IN ACCORDANCE WITH STANDARD DETAILS. SOIL AROUND THE FIRE HYDRANT SHALL BE COMPACTED IN ACCORDANCE WITH SECTION 1800 AND 1805 OF THE STANDARD SPECIFICATIONS.
  - THE CONTRACTOR SHALL NOT OPERATE ANY WATER MAIN VALVES ON THE EXISTING WATER SYSTEM.
  - FOR ALL GROUND-WATER-BOUNDED-CONCRETE-ENCLOSURE-PLANS-SEE-SECTION-1800-01-11.
  - ALL WATER HOUSE CONNECTIONS SHALL BE FOR INSIDE METER SETTING UNLESS OTHERWISE NOTED ON THE PLANS OR IN THE SPECIFICATIONS. (STD. DETAIL W.3.21).
  - WATER MAINS AND WATER HOUSE CONNECTION LINES MUST BE PLACED 80 AS TO HAVE AT LEAST ONE (1) FOOT SEPARATION FROM THE SEWER MAIN OR SEWER HOUSE CONNECTION AS THEY PASS ABOUT IT.
  - MANHOLES DESIGNATED W.T. IN PLAN AND PROFILE SHALL HAVE WATER-TIGHT FRAMES AND COVERS STANDARD DETAIL 05.52. WHERE WATER-TIGHT FRAMES AND COVERS IS USED, SET TO OF FRAME 10" ABOVE FINISHED GRADE UNLESS OTHERWISE NOTED ON THE DRAWINGS.
  - ALL SEWER MAINS SHALL BE C.P.P., R.C.S.P., V.C.P.L., 48" - 60" - 84" OR PVC UNLESS OTHERWISE NOTED.
  - THE CONTRACTOR SHALL PROVIDE A JOINT IN ALL SEWER MAINS WITHIN 2'-0" OF EXTERIOR MANHOLE WALL.
  - ALL MANHOLES SHALL BE 4'-0" INSIDE BRANCHED UNLESS OTHERWISE NOTED.
  - MANHOLES SHOWN WITH 12" AND 16" WALLS ARE FOR BRICK MANHOLES ONLY.
  - MANHOLES LOCATED WITHIN PROPOSED ROADWAY SHALL HAVE STANDARD HEAVY TRAFFIC MANHOLE FRAME AND COVER, STANDARD DETAIL 05.51.
  - ALL WATER HOUSE CONNECTIONS ARE FOR INSIDE METER SETTING.
  - ALL D.I.P. FITTINGS SHALL BE IN ACCORDANCE WITH A.M.A. SPECIFICATION C-153 DUCTILE IRON COMPACT FITTING, 3" THROUGH 12" FOR WATER AND OTHER LIQUIDS.

DEPARTMENT OF PUBLIC WORKS  
HOWARD COUNTY, MARYLAND

9/28/90  
DATE

9/28/90  
DATE

Orla engineering inc.  
Consulting Engineers • Land Planners • Surveyors  
3230 Bethany Lane, Suite 4, Ellicott City, Maryland  
301-465-0400

DES: M.L.					
DRN: R.F.					
CHK: M.L.					
DATE: _____	BY: _____	NO: _____	REVISION: _____	DATE: _____	

PLAN PROFILE  
WATER SEWER  
Contract No.: 24-1875-D

JUNCTION INDUSTRIAL PARK  
SECTION 2, PARCELS 0-1, TAX MAP 48  
6th ELECTION DISTRICT, HOWARD COUNTY, MD.  
OWNER: EMORY, HILL & ASSOCIATES  
7250 PARKWAY DRIVE  
HANOVER, MARYLAND 21076