

SEWER & WATER CODE FOR COUNTY USE
 WATER NO. E 30
 SEWER NO. 5324400

NO. OF LOTS: 4
 TYPE OF BUILDINGS: SINGLE FAMILY RESIDENCE
 NUMBER OF WATER HOUSE CONNECTIONS: 4
 NUMBER OF SEWER HOUSE CONNECTIONS: 4
 DRAINAGE AREA: LITTLE PATUXENT

QUANTITIES

ITEM	EST.	AS-BUILT	MATERIAL/SUPPLIER
8" SAN.	201 L.F.	500 L.F.	WATER PRO/J-MMF&G
SEWER MANHOLES	4	4	COMPBELL ATLANTIC FOUNDRY INC.
6" S.H.C.	44 L.F.	37 L.F.	WATER PRO/J-MMF&G
1" W.H.C.	60 L.F.	60 L.F.	WATER PRO/CAMBRIDGE-LEE
METER VAULTS	2	2	DAVIS CONCRETE/ADDERPENDING

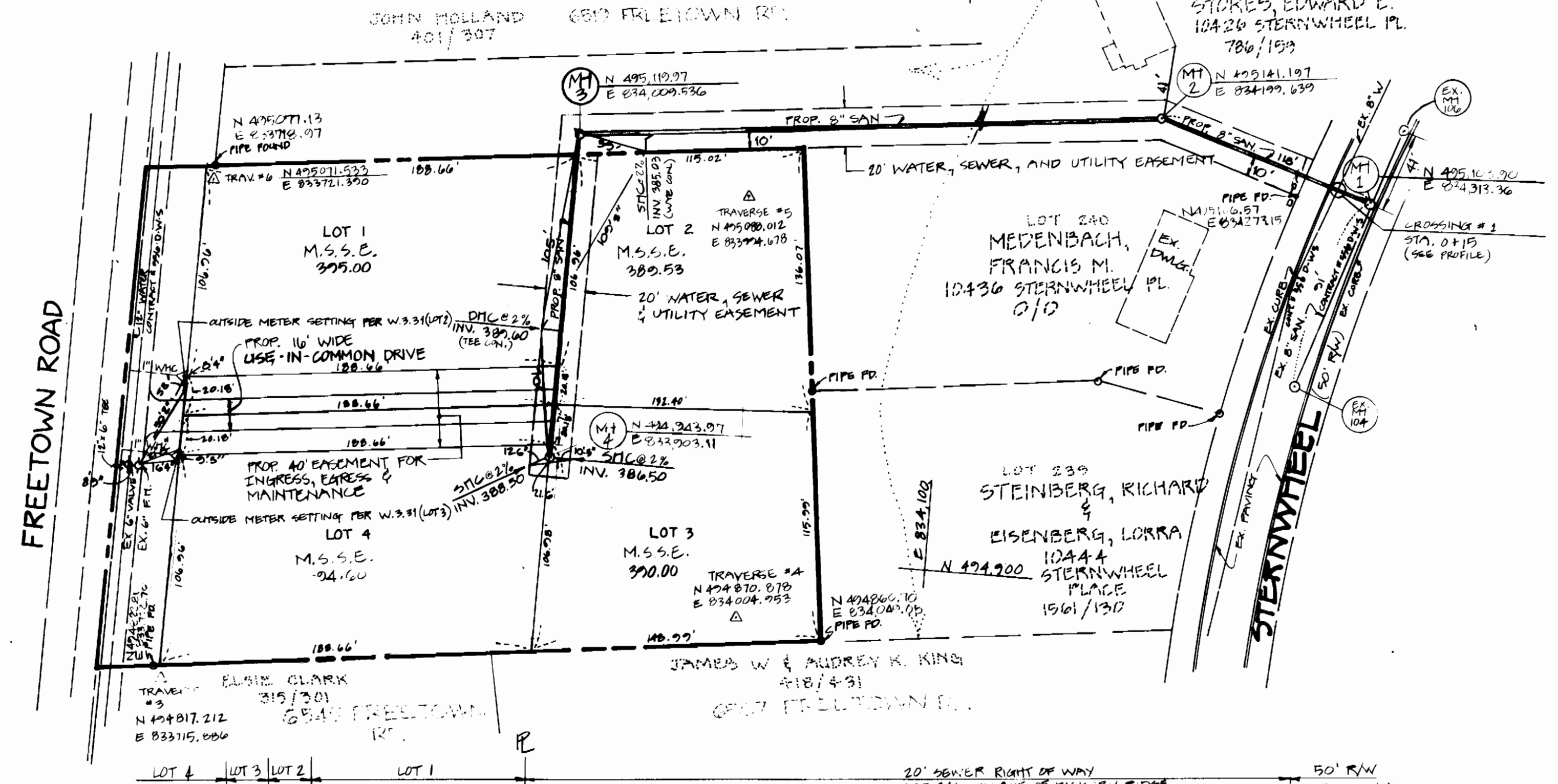
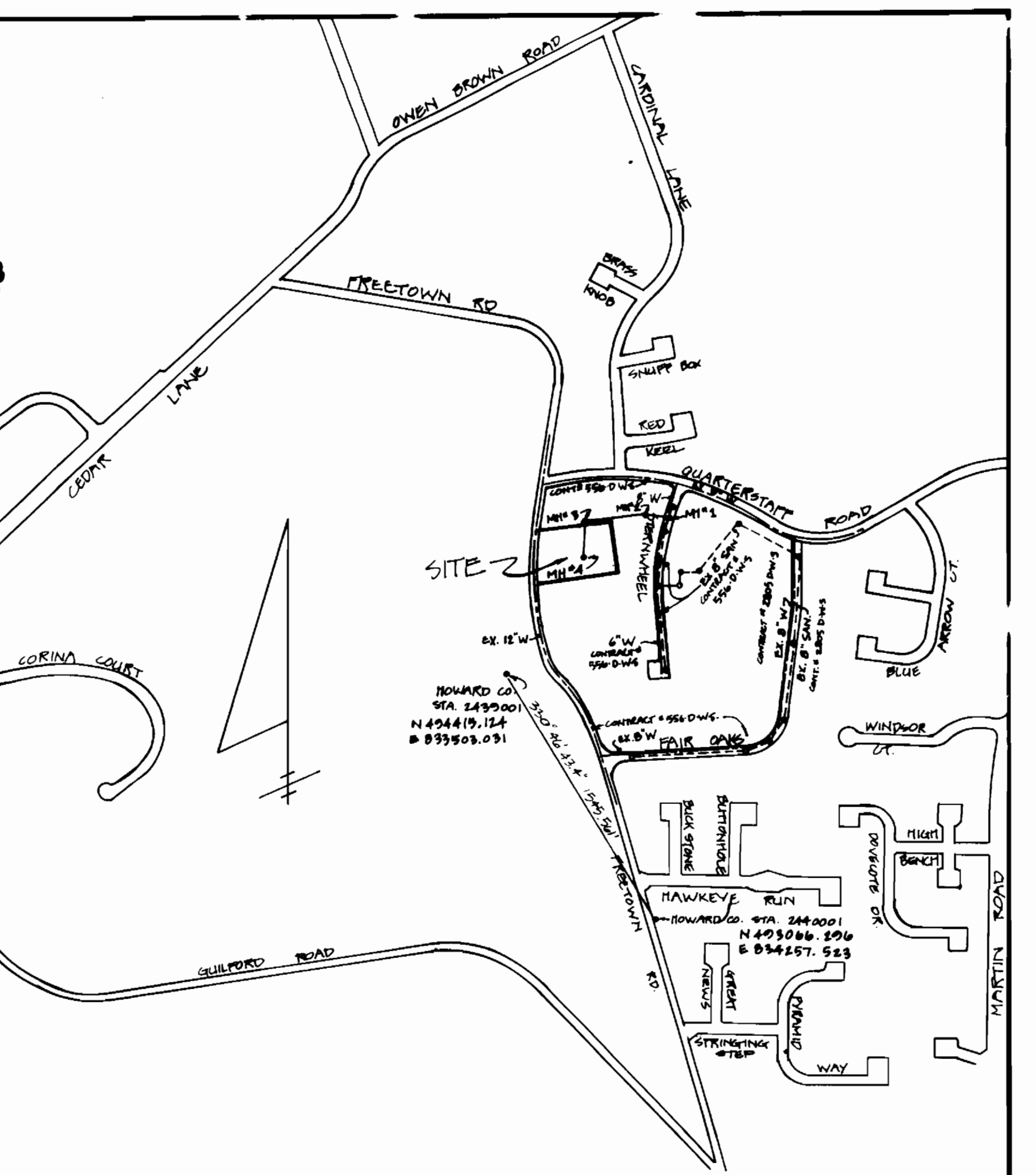
SEDIMENT CONTROL MEASURES FOR THIS CONTRACT WILL BE IMPLEMENTED IN ACCORDANCE WITH SECTION 210 OF THE HOWARD COUNTY DESIGN MANUAL AND STANDARDS AND SPECIFICATIONS FOR SOIL EROSION AND SEDIMENT CONTROL IN DEVELOPING AREAS AND ALSO AS SHOWN ON THE GRADING AND SEDIMENT CONTROL PLAN F.08-249.

REVIEWED FOR HOWARD COUNTY SOIL CONSERVATION DISTRICT AND MEETS TECHNICAL REQUIREMENTS.

John M. Atala 12/17/88
 SOIL CONSERVATION SERVICE

THIS DEVELOPMENT PLAN IS APPROVED FOR EROSION AND SEDIMENT CONTROL BY HOWARD COUNTY SOIL CONSERVATION DISTRICT.

APPROVED:
Stephen L. John 12/17/88
 HOWARD COUNTY SOIL CONSERVATION DISTRICT

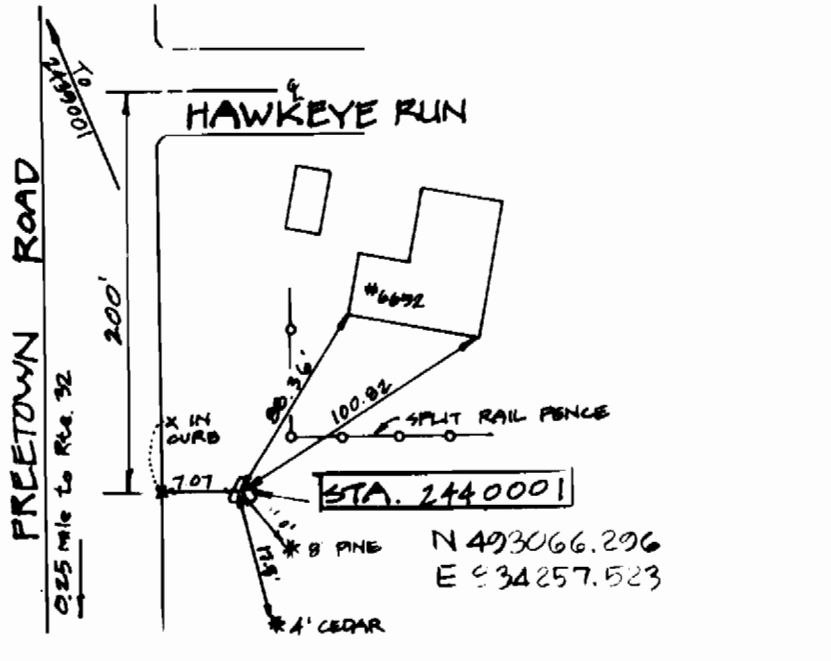


GENERAL NOTES (CONT.)
 18. ALL D.I.P. FITTINGS SHALL BE IN ACCORDANCE WITH ANIWA SPECIFICATION C-153 DUCTILE IRON COMPACT FITTING, 4-INCH THROUGH 12-INCH, FOR WATER AND OTHER LIQUIDS.

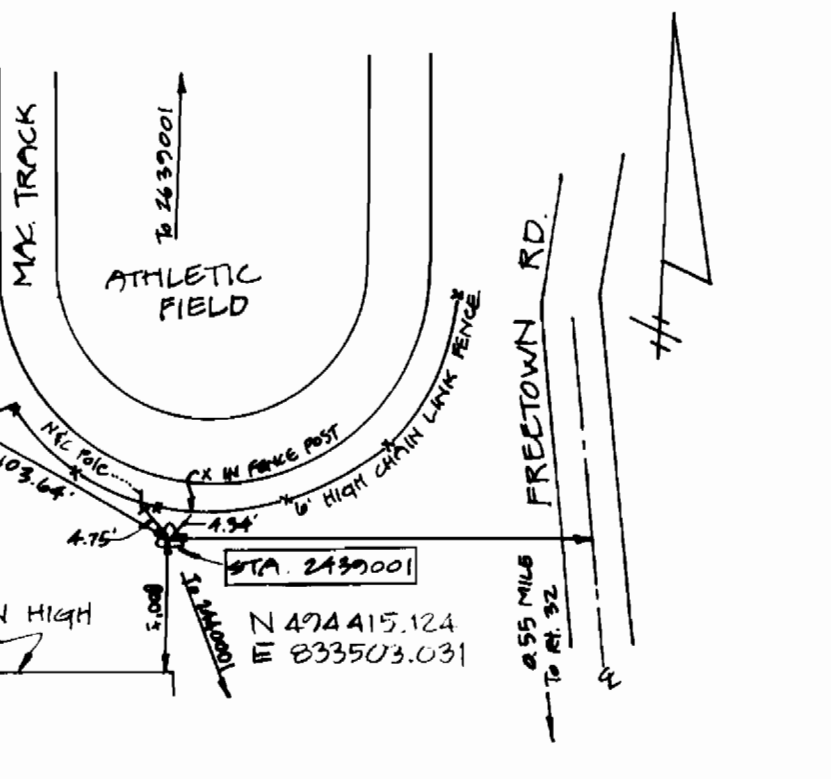
BENCHMARKS

2439001 CONCRETE MONUMENT	EL. 418.615
0.1' BELOW SURFACE	
2440001 CONCRETE MONUMENT	EL. 420.849
0.25' BELOW SURFACE	

TRAVERSE REFERENCE DIAGRAM (NOT TO SCALE)

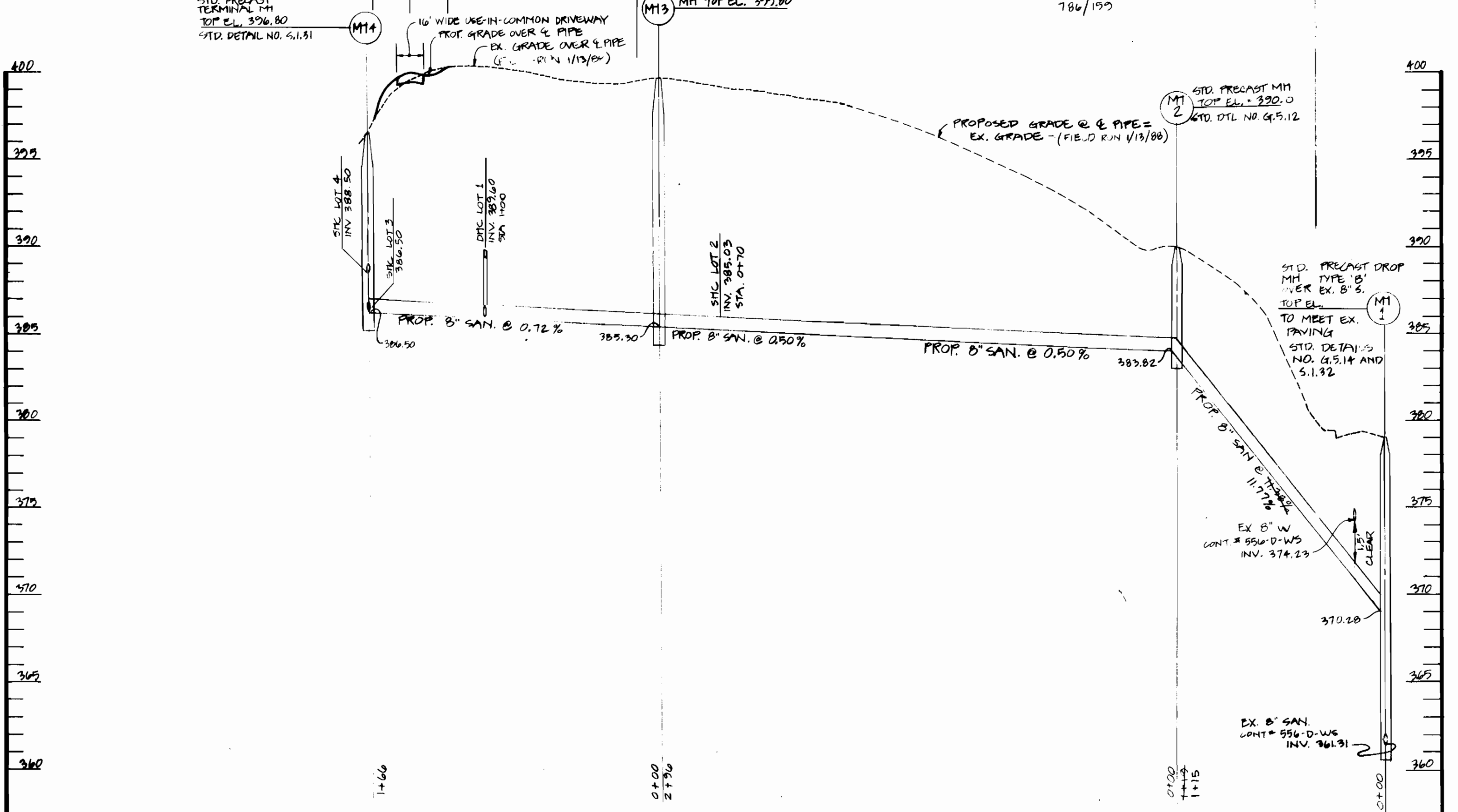


TRAVERSE REFERENCE DIAGRAM (NOT TO SCALE)



GENERAL NOTES

- APPROXIMATE LOCATION OF EXISTING MAINS ARE SHOWN. THE CONTRACTOR SHALL TAKE ALL NECESSARY PRECAUTIONS TO PROTECT EXISTING MAINS AND SERVICES AND MAINTAIN UNINTERRUPTED SUPPLY. ANY DAMAGE INCURRED SHALL BE REPAIRED IMMEDIATELY TO THE SATISFACTION OF THE ENGINEER AT THE CONTRACTOR'S EXPENSE.
- ALL HORIZONTAL CONTROLS ARE BASED ON MARYLAND STATE COORDINATES.
- ALL VERTICAL CONTROLS ARE BASED ON U.S.G.S DATUM.
- ALL PIPE ELEVATIONS SHOWN ARE INVERT ELEVATIONS.
- CLEAR ALL UTILITIES BY A MINIMUM OF 6". CLEAR ALL PIPES BY 2'-0" MINIMUM OR TUNNEL AS REQUIRED.
- FOR DETAILS NOT SHOWN ON THE DRAWINGS AND FOR MATERIALS AND CONSTRUCTION METHODS USE HOWARD COUNTY DESIGN MANUAL, VOLUME IV, STANDARD SPECIFICATIONS AND DETAILS FOR CONSTRUCTION. THE CONTRACTOR SHALL HAVE A COPY OF VOLUME III ON THE JOB.
- WHERE TEST PITS HAVE BEEN MADE ON EXISTING UTILITIES, THEY ARE NOTED BY THE SYMBOL [] AT THE LOCATION OF THE TEST PIT. A NOTE OR NOTES CONTAINING THE RESULTS OF THE TEST PIT OR ITS IS INCLUDED ON THE DRAWINGS. EXISTING UTILITIES IN THE VICINITY OF THE PROPOSED WORK FOR WHICH TEST PITS HAVE NOT BEEN MADE SHALL BE VERIFIED BY THE CONTRACTOR TO HIS OWN SATISFACTION. ANY DAMAGE TO EXISTING FACILITIES DUE TO THE CONTRACTOR'S NEGLIGENCE SHALL BE REPAIRED AT THE CONTRACTOR'S EXPENSE.
- CONTRACTOR SHALL NOTIFY THE FOLLOWING UTILITIES OR AGENCIES AT LEAST FIVE WORKING DAYS BEFORE STARTING WORK. SHOWN ON THESE PLANS:
 STATE HIGHWAY ADMINISTRATION - 531-5533
 BALTIMORE GAS & ELECTRIC COMPANY - CONTRACTOR SERVICES - 850-4420
 BALTIMORE GAS & ELECTRIC COMPANY - UNDERGROUND DAMAGE CONTROL - 850-7004
 BALTIMORE GAS & ELECTRIC COMPANY - TROUBLE SHOOTING - 208-9201
 MISS UTILITY - 1-800-287-7777
 COLONIAL PIPE COMPANY - 705-1300
 BUREAU OF UTILITIES, HOWARD COUNTY DEPARTMENT OF PUBLIC WORKS 792-2366
- TREES AND SHRUBS ARE TO BE PROTECTED FROM DAMAGE TO MAXIMUM EXTENT. TREES AND SHRUBS LOCATED WITHIN THE CONSTRUCTION STRIP ARE NOT TO BE REMOVED OR DAMAGED BY THE CONTRACTOR.
- CONTRACTOR SHALL REMOVE TREES, STUMPS, AND ROOTS ALONG LINE OF EXCAVATION.
- THE CONTRACTOR SHALL PROVIDE A JOINT IN ALL SEWER MAINS WITHIN 2'-0" OF EXTERIOR MANHOLE WALL.
- ALL MANHOLES SHOWN WITH 12" & 16" WALLS ARE FOR BRICK MANHOLES ONLY.
- ALL MANHOLES SHALL BE 4'-0" INSIDE DIAMETER UNLESS OTHERWISE NOTED.
- ALL S.H.C.'S TO BE 6".
- M.S.S.E. DESIGNATES "MINIMUM SEWER SERVICE ELEVATION".
- S---S---S DENOTES CUT FENCE.
- MIN. 3 EDGE BEARING STRENGTH OF PIPE TO BE 365 LB/FT.



SANITARY PROFILES
 SCALE: HORIZ. 1"=50'
 VERT. 1"=5'

DEPARTMENT OF PUBLIC WORKS
 HOWARD COUNTY, MARYLAND

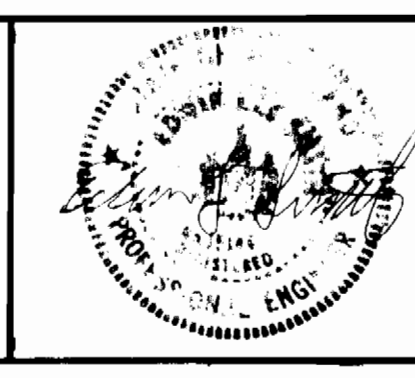
Richard Beniger 12-2-88
 CHIEF, BUREAU OF UTILITIES

Paul Johnson 12/17/88
 CHIEF, LAND DEVELOPMENT DIVISION

John M. Atala 12/17/88
 SOIL CONSERVATION SERVICE

Stephen L. John 12/17/88
 CHIEF, BUREAU OF ENGINEERING

SHANABERGER & LANE
 8726 TOWN & COUNTRY BLVD.
 SUITE 203
 ELLICOTT CITY, MARYLAND 21043
 (301) 461-9563



DESIGNED	1985				
DRAWN	SLM				
CHECKED	ELS				
DATE	02/21/89				
BY	NO.	REVISION	DATE		
	1	RELOCATE SHC LOT 4 @ MH 4 TO ELEV 388.50	02/21/89		

KELLY SUBDIVISION
 LOTS 1 & 4
 PLAN & PROFILES OF SEWER MAINS

CONTRACT NO. 24-1873-D

SCALE: 1"=50'
 SHEET 1 OF 1

AS-BUILT 1/28/86